



Kandilli Rasathanesi Ve Deprem Araştırma Enstitüsü

ULUSAL DEPREM İZLEME MERKEZİ



*2010 ŞUBAT AYI
BÜLTENİ*

*YIL: 7 - SAYI: 74
İSTANBUL*

Hazırlayan ve Katkıda Bulunanlar

D. Kalafat

K. Kekovalı

K. Kılıç

Y. Güneş

Z. Öğütcü

M. Kara

M. Yilmazer

M. Suvarıklı

M. Çomođlu

A. Küsmezer

F.Bekler

P. Deniz

A. Berberođlu

M. Berberođlu

S. Poyraz

D.Kepekçi

R.Polat

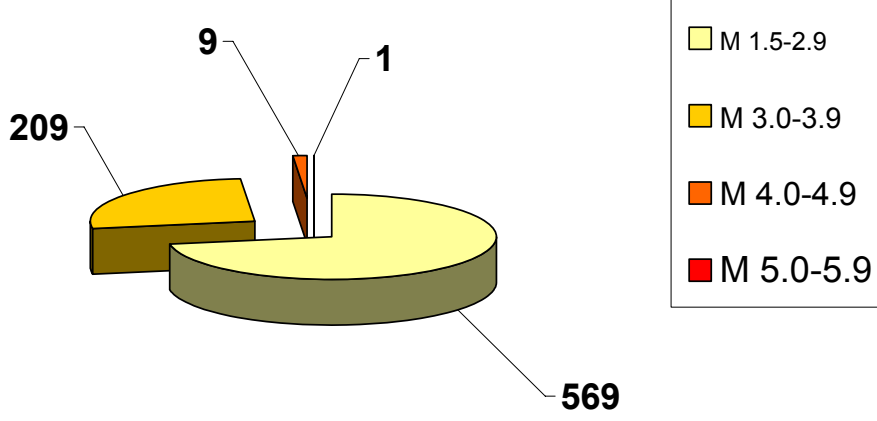
M.F.Akkoyunlu

Ö.Çok

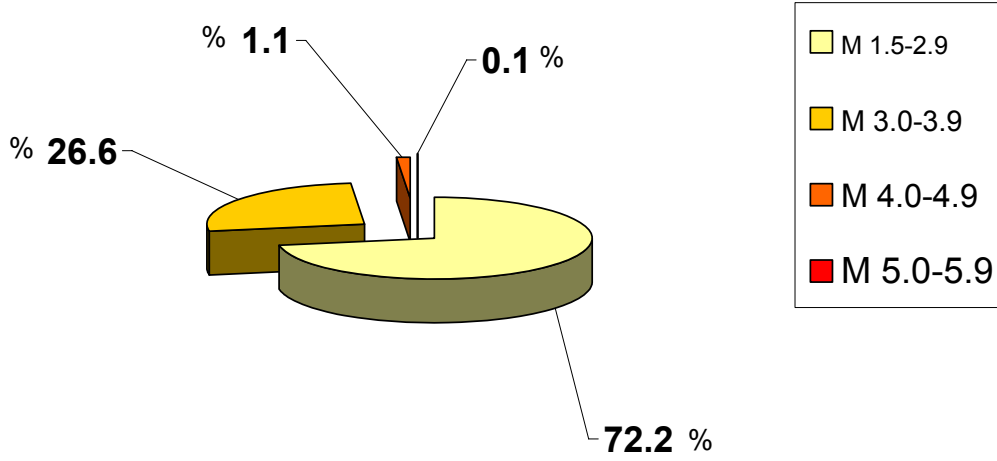
2010 yılı Şubat ayında meydana gelen depremlerin
istatistiksel dağılımı

MAGNİTÜD ARALIĞI	TOPLAM
1.5-2.9	569
3.0-3.9	209
4.0-4.9	9
5.0-5.9	1
6.0-6.9	—
7.0-7.9	—
TOPLAM	788

2010 ŞUBAT AYI DEPREMLERİNİN İSTATİSTİKSEL DAĞILIMI
(Toplam: 788 Adet)



2010 ŞUBAT AYI DEPREMLERİNİN İSTATİSTİKSEL DAĞILIMI (%)



DEĞERLENDİRME

Şubat ayında toplam 788 depremin çözümü yapılmıştır. Büyüklüğü 4.0 ve üzerinde olan deprem sayısı 10 adettir. Toplam meydana gelen depremlerin % 72.2 oranını büyüklükleri M=1.5-2.9 arasındaki depremler oluşturmaktadır.

100 adet geniş bantlı (Broad Band) istasyonun Şubat ayı içerisindeki çalışma performansları % 78 dir. Bu ay içerisinde 17 adet geniş bantlı (Broad Band) deprem istasyonu verimsiz olmuştur.

22 adet kısa periyotlu (SP) istasyonun Şubat ayı içerisindeki çalışma performansları % 69 olup, 7 adet kısa periyot deprem istasyonu verimsiz olmuştur.

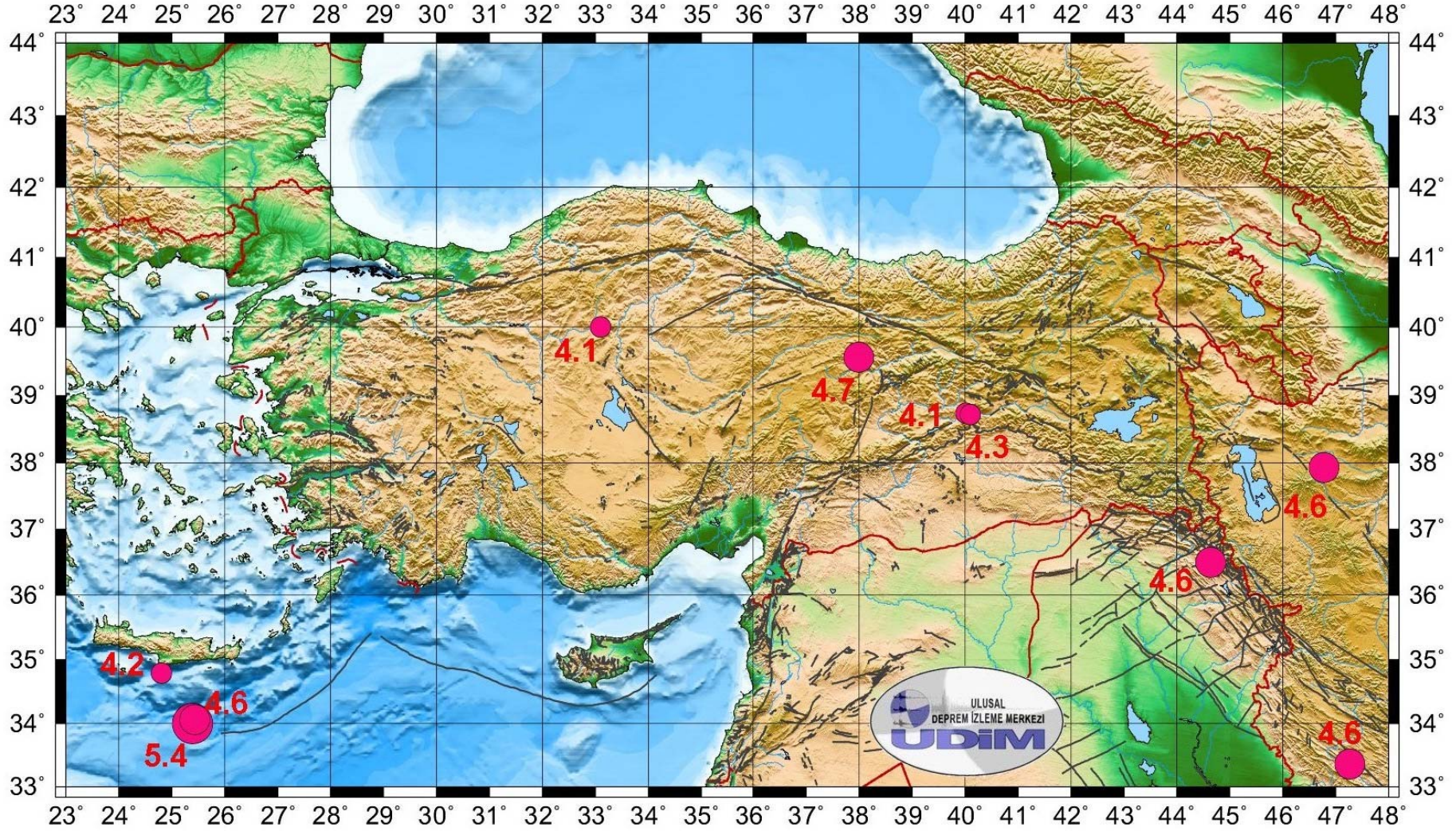
Şubat ayı itibarıyla deprem istasyonlarının ve *sismik ağın ortalama verimlilik performansı* % 77 olmuştur.

Şubat ayındaki en önemli depremler ;

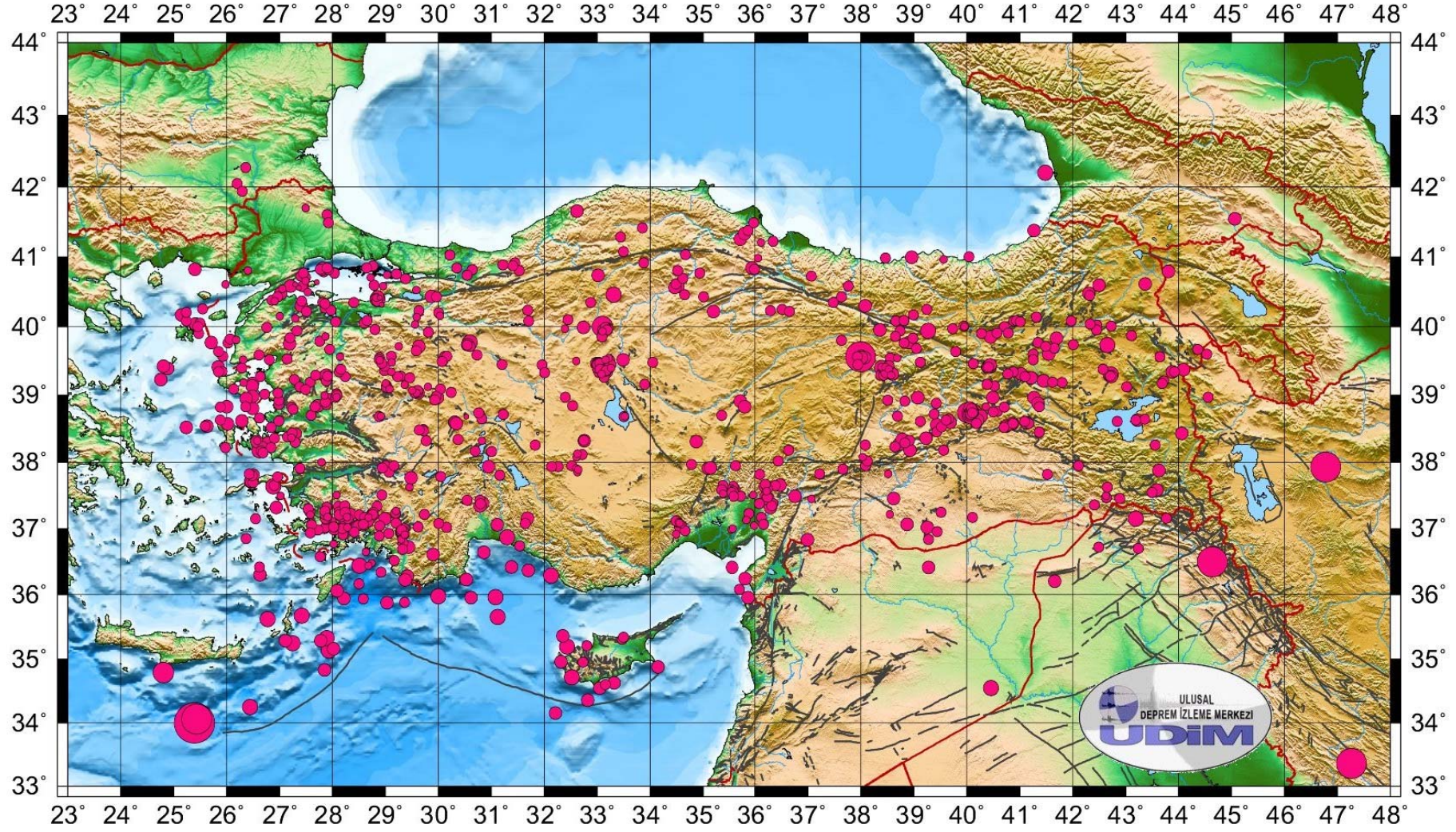
Gün	Ay	Yıl	Saat (GMT)	Enlem (N)	Boylam (E)	Derinlik (Km.)	M (ISK)	Yer
11	2	2010	21:56	34.00	25.39	14	5.4	Akdeniz
1	2	2010	04:01	39.56	37.99	6	4.7	Sincan- Divriği- SIVAS
2	2	2010	10:16	37.93	46.78	10	4.6	İran
4	2	2010	19:53	36.50	44.64	5	4.6	İrak
11	2	2010	16:29	33.36	47.27	12	4.6	İran
28	2	2010	02:22	34.06	25.43	36	4.6	Akdeniz
21	2	2010	04:38	38.72	40.10	5	4.3	Gökdere-Palu-ELAZIĞ
12	2	2010	21:00	34.79	24.81	42	4.2	Akdeniz
14	2	2010	12:20	38.74	40.02	6	4.1	Gökdere-Palu-ELAZIĞ
19	2	2010	00:35	40.00	33.10	8	4.1	Akyurt-ANKARA

Ayrıca, Tekirdağ açıkları-Marmara Denizi'nde, Aliğa-Bergama-İzmir, Soma-Kırkağaç-Manisa, Oniki Adalar bölgesinde, Gökova Körfezi-Milas-Muğla, Akdeniz, Simav-Kütahya, Denizli, Bolvadin-Afyon, Eskişehir, Afşar-Bala-Ankara, Elmadağ-Akyurt-Ankara, Kozan-Adana'da meydana gelen deprem etkinlikleri dikkat çekmektedir. Kemaliye-Erzincan, Sincan-Divriği-Sivas, Karlıova-Bingöl, Doğu Anadolu Fay Zonu boyunca ise Palu-Sivrice-Elazığ ve Malatya'da deprem etkinlikleri gözlenmiştir.

TÜRKİYE VE YAKIN ÇEVRESİNDE M > 4.0 OLAN DEPREMLER (ŞUBAT 2010)



TÜRKİYE VE YAKIN ÇEVRESİ DEPREM ETKİNLİĞİ (ŞUBAT 2010) Toplam: 788 Adet



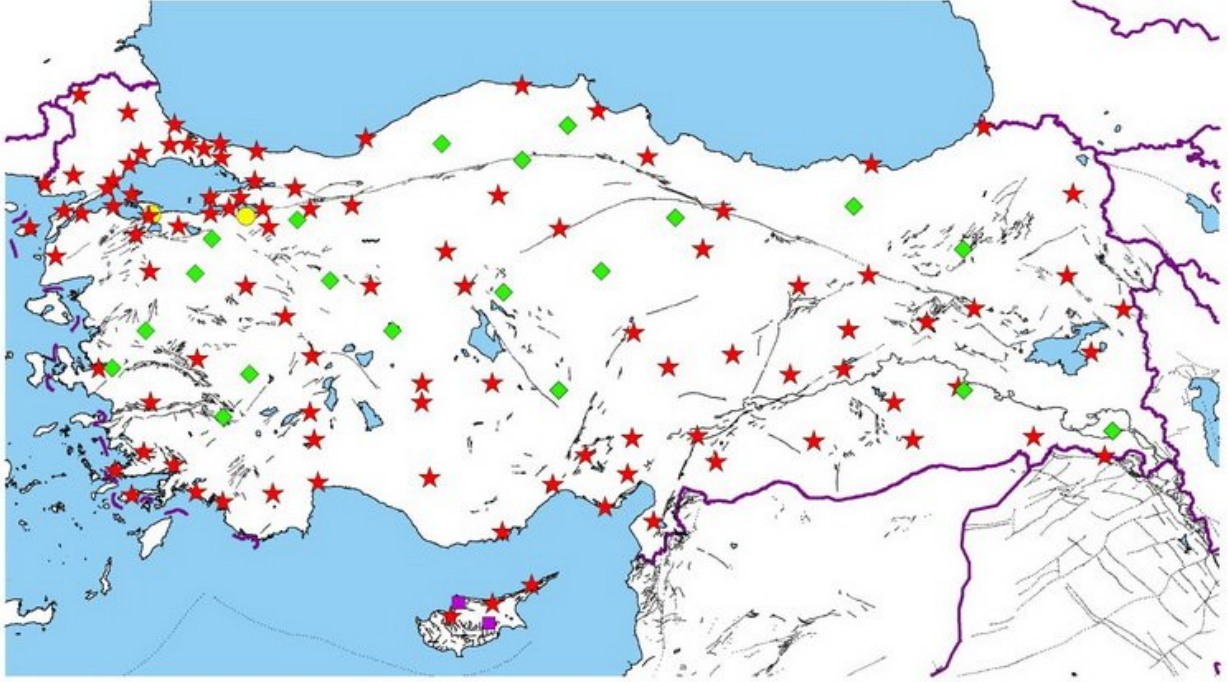
ŞUBAT 2010

İSTASYON VERİMLİLİK

TABLOLARI

B.Ü.
KANDİLLİ RASATHANESİ VE DEPREM ARAŞTIRMA ENSTİTÜSÜ
ULUSAL DEPREM İZLEME MERKEZİ
DEPREM İSTASYONLARI

Şubat 2010
Toplam: 124 Adet



★ GENİŞ BAND

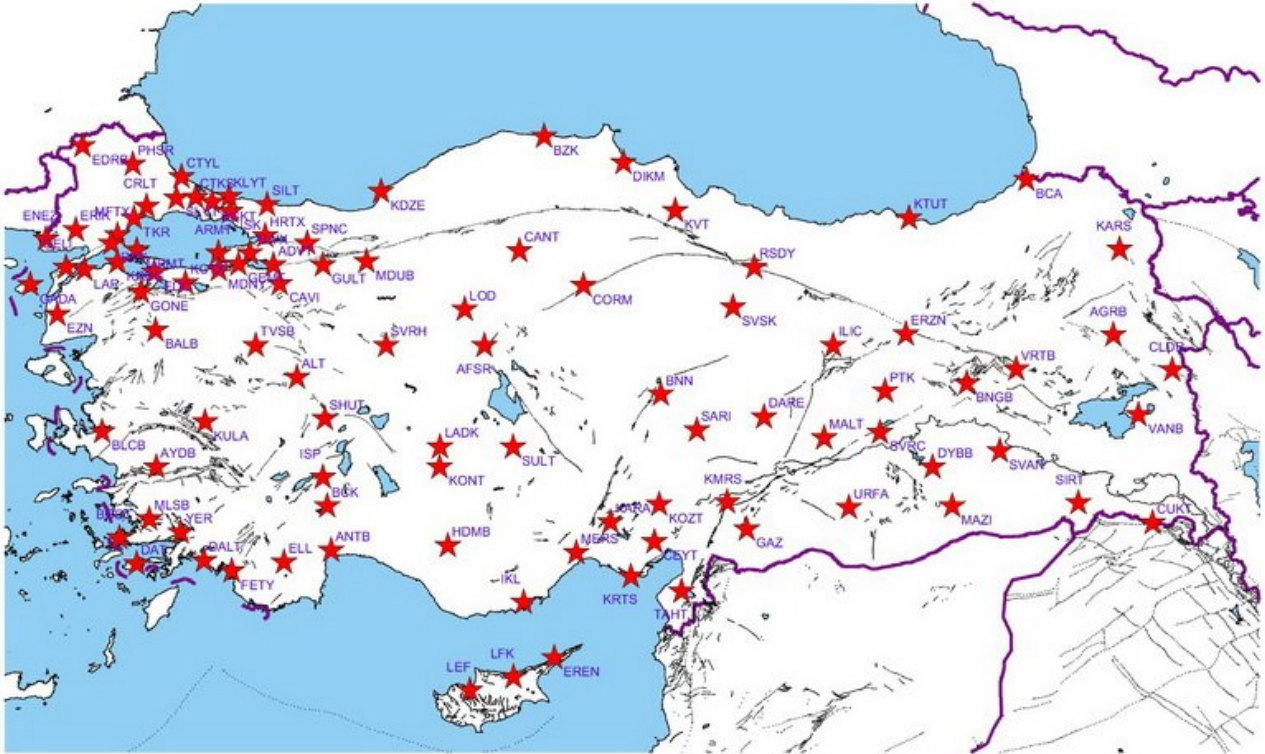
◆ KISA PERİYOT

● TELEMETRİ KISA PERİYOT

■ İVME ÖLÇER

GENİŞ BANTLI (BROADBAND) DEPREM İSTASYONLARI

Şubat 2010
100 Adet



Adet	Yöntem	Kod	(+)adet	(-)adet	TOPLAM GÜN	(+)%	(-)%	(+)%	(-)%
1	1	ADVT	27	1	28	96	4		
2	2	AFSR	28	0	28	100	0		
3	3	AGRB	28	0	28	100	0		
4	4	ALT	28	0	28	100	0		
5	5	ANTB	27	1	28	96	4		
6	6	ARMT	16	12	28	57	43		
7	7	AYDB	28	0	28	100	0		
8	8	BALB	28	0	28	100	0		
9	9	BCA	2	26	28	7	93		
10	10	BCK	28	0	28	100	0		
11	11	BGKT	28	0	28	100	0		
12	12	BLCB	27	1	28	96	4		
13	13	BNGB	16	12	28	57	43		
14	14	BNN	28	0	28	100	0		
15	15	BODT	27	1	28	96	4		
16	16	BZK	28	0	28	100	0		
17	17	CANT	19	9	28	68	32		
18	18	CAVI	28	0	28	100	0		
19	19	CEYT	28	0	28	100	0		
20	20	CLDR	28	0	28	100	0		
21	21	CORM	24	4	28	86	14		
22	22	CRLT	28	0	28	100	0		
23	23	CTKS	28	0	28	100	0		
24	24	CTYL	28	0	28	100	0		
25	25	CUKT	28	0	28	100	0		
26	26	DALY	28	0	28	100	0		
27	27	DARE	28	0	28	100	0		
28	28	DAT	0	28	28	0	100		
29	29	DIKM	28	0	28	100	0		
30	30	DYBB	28	0	28	100	0		
31	31	EDC	28	0	28	100	0		
32	32	EDRB	28	0	28	100	0		
33	33	ELL	28	0	28	100	0		
34	34	ENEZ	28	0	28	100	0		
35	35	EREN	28	0	28	100	0		
36	36	ERIK	5	23	28	18	82		
37	37	ERZN	28	0	28	100	0		
38	38	EZNY	28	0	28	100	0		
39	39	FETY	12	16	28	43	57		
40	40	GADA	0	28	28	0	100		
41	41	GAZ	0	28	28	0	100		
42	42	GELI	28	0	28	100	0		
43	43	GEMT	21	7	28	75	25		
44	44	GONE	2	26	28	7	93		
45	45	GULT	13	15	28	46	54		
46	46	HDMB	0	28	28	0	100		
47	47	HRTX	28	0	28	100	0		
48	48	IKL	0	28	28	0	100		
49	49	ILIC	28	0	28	100	0		
50	50	ISK	28	0	28	100	0		
51	51	ISP	28	0	28	100	0		
52	52	KARA	25	3	28	89	11		
53	53	KARS	28	0	28	100	0		
54	54	KCTX	2	26	28	7	93		
55	55	KDZE	28	0	28	100	0		
56	56	KLYT	28	0	28	100	0		
57	57	KMRS	28	0	28	100	0		
58	58	KONT	28	0	28	100	0		
59	59	KOZT	27	1	28	96	4		
60	60	KRBT	28	0	28	100	0		
61	61	KRTS	0	28	28	0	100		
62	62	KTUT	28	0	28	100	0		
63	63	KULA	28	0	28	100	0		
64	64	KVT	28	0	28	100	0		
65	65	LADK	28	0	28	100	0		
66	66	LAP	28	0	28	100	0		
67	67	LEF	27	1	28	96	4		
68	68	LFK	27	1	28	96	4		
69	69	LOD	28	0	28	100	0		
70	70	MALT	13	15	28	46	54		
71	71	MAZI	25	3	28	89	11		
72	72	MDNY	28	0	28	100	0		
73	73	MDUB	28	0	28	100	0		
74	74	MERS	24	4	28	86	14		
75	75	MFTX	0	28	28	0	100		
76	76	MLSB	0	28	28	0	100		
77	77	MRMT	24	4	28	86	14		
78	78	PHRS	26	2	28	93	7		
79	79	PTK	24	4	28	86	14		
80	80	RKY	28	0	28	100	0		
81	81	RSDY	28	0	28	100	0		
82	82	SARI	0	28	28	0	100		
83	83	SHUT	28	0	28	100	0		
84	84	SILT	28	0	28	100	0		
85	85	SIRT	28	0	28	100	0		
86	86	SLVT	28	0	28	100	0		
87	87	SPNC	25	3	28	89	11		
88	88	SULT	28	0	28	100	0		
89	89	SVAN	28	0	28	100	0		
90	90	SVRC	0	28	28	0	100		
91	91	SVRH	28	0	28	100	0		
92	92	SVSK	25	3	28	89	11		
93	93	TAHT	0	28	28	0	100		
94	94	TKR	0	28	28	0	100		
95	95	TVSB	28	0	28	100	0		
96	96	URFA	28	0	28	100	0		
97	97	VANB	11	17	28	39	61		
98	98	VRTB	28	0	28	100	0		
99	99	YER	27	1	28	96	4		
100	100	YLVX	0	28	28	0	100		

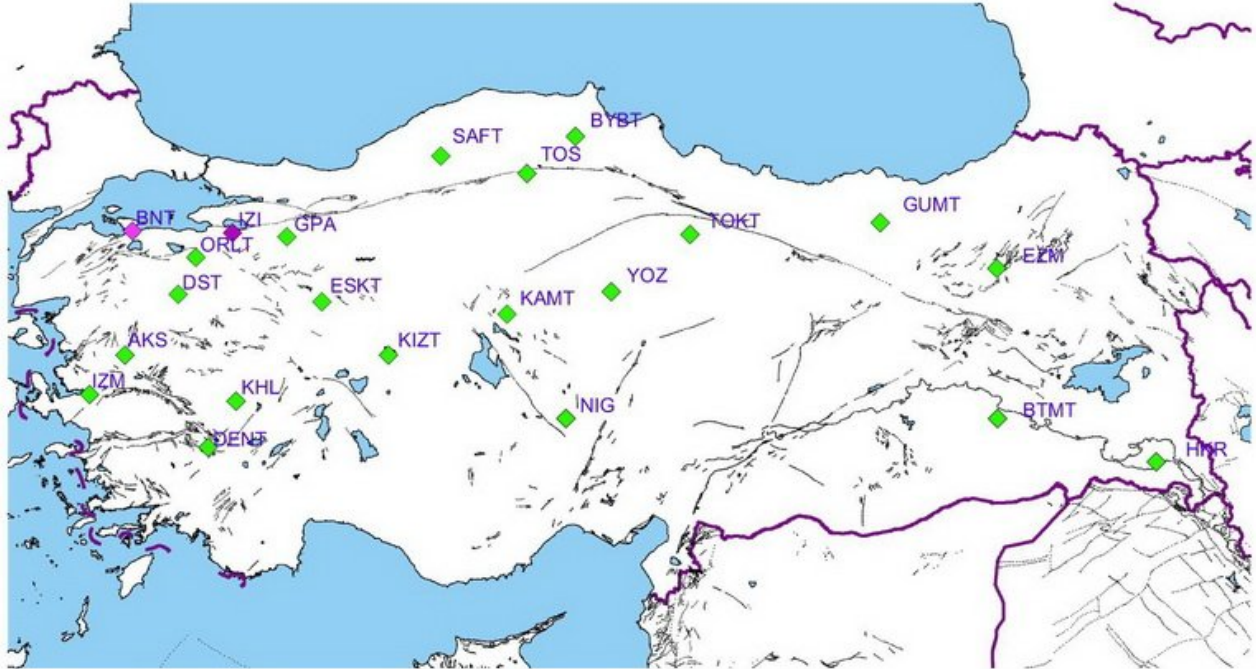
GENİŞ BANTLI (BROAD-BAND) İSTASYONLAR

78

22

101	1	KISA PERİYOT (SHORT PERIOD) İSTASYONLAR	AKS	28	0	28	100	0	69	31
102	2		BNT	27	1	28	96	4		
103	3		BTMT	28	0	28	100	0		
104	4		BYBT	28	0	28	100	0		
105	5		DENT	7	21	28	25	75		
106	6		DST	0	28	28	0	100		
107	7		ESKT	0	28	28	0	100		
108	8		EZM	28	0	28	100	0		
109	9		GPA	27	1	28	96	4		
110	10		GUMT	28	0	28	100	0		
111	11		HKR	4	24	28	14	86		
112	12		IZI	28	0	28	100	0		
113	13		IZM	0	28	28	0	100		
114	14		KAMT	1	27	28	4	96		
115	15		KHL	28	0	28	100	0		
116	16		KIZT	23	5	28	82	18		
117	17		NIG	28	0	28	100	0		
118	18		ORLT	27	1	28	96	4		
119	19		SAFT	28	0	28	100	0		
120	20		TOKT	0	28	28	0	100		
121	21		TOS	28	0	28	100	0		
122	22		YOZ	26	0	28	93	0		
							+	(-)		
2010 ŞUBAT ORTALAMA %							77	23		

KISA PERİYOT (SP) İSTASYONLAR Toplam: 22 Adet Şubat 2010

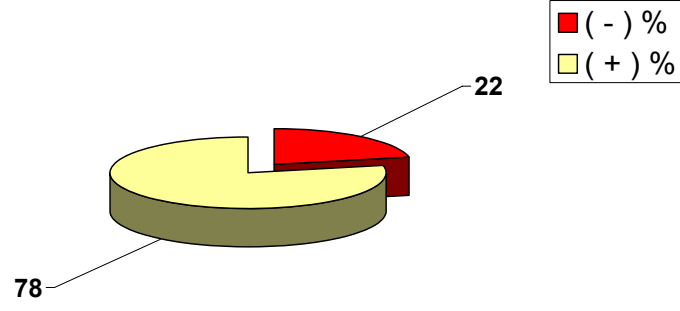


◆ Kısa Periyot
TELEFON HATTI
20 Adet

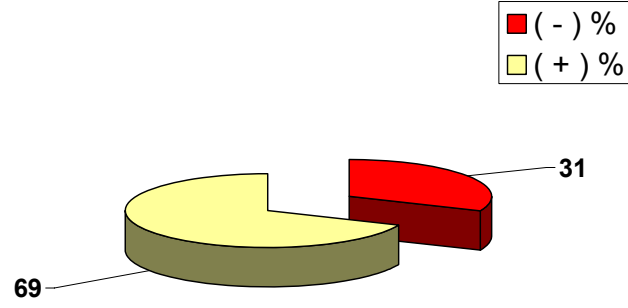
◆ Kısa Periyot
TELEMETRİ
1 Adet

◆ Kısa Periyot
UYDU İLETİŞİMLİ
1 Adet

2010 ŞUBAT AYI BROAD-BAND İSTASYONLARI VERİMLİLİK GRAFİĞİ



2010 ŞUBAT AYI SHORT PERIOD İSTASYONLARI VERİMLİLİK GRAFİĞİ



TÜRKİYE DEPREM ETKİNLİĞİ (2010 YILI ŞUBAT AYI)

No	Tarih - Date			Zaman - Time			Koordinat - Coordinate			Derinlik - Depth		Magnitüd - Magnitude									
	Gün	Ay	Yıl	Saat	Dak.	San.	Enlem-K	Boylam-D	Ref	Km.	Ref	Ms	Ref	Mb	Ref	Md	Ref	MI	Ref	Mw	Ref
1	1	2	2010	0	22	36.6	37.95	29.01	R	5	R					2.8	R				
2	1	2	2010	0	55	54.5	37.13	35.83	R	2	R					2.4	R				
3	1	2	2010	1	5	22.1	37.49	36.75	R	5	R					3.2	R				
4	1	2	2010	1	23	23.9	36.96	29.32	R	2	R					3.0	R				
5	1	2	2010	2	9	59.1	37.22	28.33	R	7	R					3.0	R				
6	1	2	2010	2	39	7.4	39.31	41.03	R	5	R					3.3	R				
7	1	2	2010	3	37	5.4	39.27	41.10	R	2	R					2.8	R				
8	1	2	2010	4	1	41.0	39.56	37.99	R	6	R			4.4	N			4.7	R		
9	1	2	2010	4	26	50.0	39.56	37.93	R	24	R					2.9	R				
10	1	2	2010	4	46	41.5	41.42	33.86	R	18	R					2.8	R				
11	1	2	2010	4	58	15.2	39.60	41.55	R	8	R					3.0	R				
12	1	2	2010	6	11	3.3	39.57	38.01	R	22	R					3.0	R				
13	1	2	2010	6	32	26.8	37.34	28.84	R	5	R					2.7	R				
14	1	2	2010	6	36	42.2	37.21	28.51	R	3	R					2.7	R				
15	1	2	2010	8	27	10.2	38.32	32.76	R	7	R					3.0	R				
16	1	2	2010	9	27	23.1	39.45	37.94	R	26	R					2.7	R				
17	1	2	2010	9	58	48.7	41.03	30.22	R	14	R					2.7	R				
18	1	2	2010	10	37	22.4	38.33	32.75	R	6	R					2.5	R				
19	1	2	2010	10	47	18.1	36.92	34.49	R	16	R					2.4	R				
20	1	2	2010	10	53	41.9	39.94	38.74	R	24	R					2.8	R				

TÜRKİYE DEPREM ETKİNLİĞİ (2010 YILI ŞUBAT AYI)

No	Tarih - Date			Zaman - Time			Koordinat - Coordinate			Derinlik - Depth		Magnitüd - Magnitude									
	Gün	Ay	Yıl	Saat	Dak.	San.	Enlem-K	Boylam-D	Ref	Km.	Ref	Ms	Ref	Mb	Ref	Md	Ref	MI	Ref	Mw	Ref
21	1	2	2010	11	26	48.9	39.90	40.28	R	4	R					2.7	R				
22	1	2	2010	11	31	58.2	38.27	38.72	R	2	R					3.0	R				
23	1	2	2010	11	52	54.4	37.09	28.29	R	5	R					3.1	R				
24	1	2	2010	13	4	21.3	38.70	27.60	R	8	R					2.7	R				
25	1	2	2010	13	7	28.5	40.99	38.46	R	7	R					2.8	R				
26	1	2	2010	13	7	39.7	37.08	28.33	R	5	R					2.7	R				
27	1	2	2010	13	42	47.2	41.21	36.11	R	24	R					2.3	R				
28	1	2	2010	17	34	49.7	39.55	38.00	R	26	R					3.1	R				
29	1	2	2010	19	42	55.5	36.99	35.54	R	17	R					2.3	R				
30	1	2	2010	20	51	40.7	35.13	27.93	R	5	R					3.5	R				
31	1	2	2010	21	28	22.7	40.08	38.66	R	15	R					2.5	R				
32	2	2	2010	0	22	36.4	37.38	36.08	R	17	R					2.7	R				
33	2	2	2010	0	47	26.1	37.82	36.09	R	9	R					2.7	R				
34	2	2	2010	1	1	45.2	40.08	40.89	R	7	R					2.9	R				
35	2	2	2010	1	27	36.8	40.09	40.94	R	8	R					2.7	R				
36	2	2	2010	2	3	51.5	35.87	29.03	R	10	R					3.2	R				
37	2	2	2010	2	12	54.2	38.76	40.58	R	20	R					2.5	R				
38	2	2	2010	2	34	36.7	39.14	29.02	R	10	R					2.9	R				
39	2	2	2010	8	18	4.1	38.18	39.56	R	8	R					2.8	R				
40	2	2	2010	9	46	5.8	40.88	28.76	R	5	R					2.6	R				

TÜRKİYE DEPREM ETKİNLİĞİ (2010 YILI ŞUBAT AYI)

No	Tarih - Date			Zaman - Time			Koordinat - Coordinate			Derinlik - Depth		Magnitüd - Magnitude										
	Gün	Ay	Yıl	Saat	Dak.	San.	Enlem-K	Boylam-D	Ref	Km.	Ref	Ms	Ref	Mb	Ref	Md	Ref	MI	Ref	Mw	Ref	
41	2	2	2010	10	16	28.8	37.93	46.78	N	10	N			4.6	N							
42	2	2	2010	11	23	56.1	34.72	32.52	R	10	R							3.6	R			
43	2	2	2010	14	58	0.2	39.41	38.39	R	22	R					2.3	R					
44	2	2	2010	15	33	2.9	38.63	43.22	R	5	R					3.3	R					
45	2	2	2010	15	40	31.5	38.64	43.36	R	30	R					2.8	R					
46	2	2	2010	16	56	5.3	35.16	28.02	R	30	R							3.3	R			
47	2	2	2010	18	28	41.4	38.72	30.78	R	11	R					2.7	R					
48	2	2	2010	20	30	38.5	38.71	31.23	R	5	R					2.7	R					
49	2	2	2010	21	4	41.3	36.95	29.31	R	6	R					2.9	R					
50	2	2	2010	21	9	58.6	36.96	29.31	R	8	R					3.0	R					
51	2	2	2010	23	13	50.6	35.21	32.81	R	34	R					2.7	R					
52	3	2	2010	0	17	37.9	35.94	28.22	R	5	R					3.3	R					
53	3	2	2010	0	28	28.1	39.55	28.89	R	9	R					2.8	R					
54	3	2	2010	1	13	50.7	38.96	39.07	R	5	R					3.4	R					
55	3	2	2010	2	26	11.3	36.72	42.49	R	9	R					2.7	R					
56	3	2	2010	2	55	43.6	38.38	27.15	R	6	R					2.7	R					
57	3	2	2010	3	10	16.2	36.64	30.86	R	65	R					3.2	R					
58	3	2	2010	4	34	39.1	37.34	28.11	R	18	R					2.6	R					
59	3	2	2010	4	48	34.7	37.38	36.34	R	4	R					2.7	R					
60	3	2	2010	5	11	16.2	39.16	33.90	R	5	R					2.8	R					

TÜRKİYE DEPREM ETKİNLİĞİ (2010 YILI ŞUBAT AYI)

No	Tarih - Date			Zaman - Time			Koordinat - Coordinate			Derinlik - Depth		Magnitüd - Magnitude									
	Gün	Ay	Yıl	Saat	Dak.	San.	Enlem-K	Boylam-D	Ref	Km.	Ref	Ms	Ref	Mb	Ref	Md	Ref	MI	Ref	Mw	Ref
61	3	2	2010	6	6	35.1	37.11	28.23	R	7	R					2.8	R				
62	3	2	2010	6	12	18.5	37.02	28.28	R	15	R					2.4	R				
63	3	2	2010	7	26	3.8	37.59	35.60	R	5	R							3.3	R		
64	3	2	2010	10	13	11.8	38.31	26.78	R	17	R					2.9	R				
65	3	2	2010	12	1	11.5	37.58	35.59	R	9	R					2.9	R				
66	3	2	2010	12	38	55.8	37.22	29.74	R	6	R					2.6	R				
67	3	2	2010	19	36	44.2	40.32	28.93	R	16	R					1.9	R				
68	3	2	2010	21	13	11.7	39.52	26.31	R	5	R					2.4	R				
69	3	2	2010	21	28	29.7	40.41	28.82	R	7	R					2.7	R				
70	3	2	2010	21	57	55.0	40.40	28.85	R	9	R							3.5	R		
71	3	2	2010	22	18	22.9	40.42	28.83	R	5	R					2.4	R				
72	3	2	2010	22	47	4.4	37.64	35.58	R	5	R					2.6	R				
73	4	2	2010	0	27	32.9	39.34	43.88	R	5	R					3.2	R				
74	4	2	2010	1	24	3.3	37.08	31.64	R	29	R					2.9	R				
75	4	2	2010	1	31	51.1	40.08	31.71	R	10	R					2.6	R				
76	4	2	2010	2	38	51.0	39.34	43.92	R	11	R					2.8	R				
77	4	2	2010	3	13	22.0	37.00	28.37	R	14	R					2.7	R				
78	4	2	2010	4	49	51.7	35.29	27.11	R	22	R					3.2	R				
79	4	2	2010	5	28	28.3	38.23	26.69	R	8	R					2.6	R				
80	4	2	2010	8	42	57.7	40.42	28.89	R	5	R					1.7	R				

TÜRKİYE DEPREM ETKİNLİĞİ (2010 YILI ŞUBAT AYI)

No	Tarih - Date			Zaman - Time			Koordinat - Coordinate			Derinlik - Depth		Magnitüd - Magnitude									
	Gün	Ay	Yıl	Saat	Dak.	San.	Enlem-K	Boylam-D	Ref	Km.	Ref	Ms	Ref	Mb	Ref	Md	Ref	MI	Ref	Mw	Ref
81	4	2	2010	9	5	57.3	39.67	27.95	R	15	R					2.7	R				
82	4	2	2010	12	3	31.7	38.91	38.83	R	8	R					2.7	R				
83	4	2	2010	13	29	21.7	42.05	26.20	R	5	R					2.7	R				
84	4	2	2010	13	49	0.8	37.82	41.52	R	5	R					2.8	R				
85	4	2	2010	14	3	42.1	35.67	27.42	R	72	R					3.5	R				
86	4	2	2010	14	22	34.5	38.33	38.92	R	12	R					2.9	R				
87	4	2	2010	14	47	25.2	39.79	27.76	R	11	R					2.6	R				
88	4	2	2010	16	5	59.2	40.43	28.85	R	6	R					3.0	R				
89	4	2	2010	19	53	30.8	36.50	44.64	R	5	R							4.6	R		
90	4	2	2010	20	35	7.2	38.82	27.23	R	5	R					2.8	R				
91	4	2	2010	21	46	49.0	40.60	28.79	R	5	R					2.5	R				
92	4	2	2010	22	17	43.6	38.79	27.26	R	7	R					2.7	R				
93	4	2	2010	22	37	28.6	37.59	35.54	R	3	R					2.6	R				
94	4	2	2010	23	26	45.9	36.58	27.77	R	70	R					2.6	R				
95	4	2	2010	23	42	53.1	36.29	32.13	R	24	R							3.8	R		
96	5	2	2010	1	4	12.5	39.12	29.80	R	8	R					2.4	R				
97	5	2	2010	1	45	25.9	36.48	28.74	R	5	R					2.4	R				
98	5	2	2010	3	7	42.5	38.54	25.60	R	15	R					2.8	R				
99	5	2	2010	6	6	51.2	39.27	26.64	R	9	R					2.8	R				
100	5	2	2010	6	29	36.6	42.27	26.36	R	18	R					2.8	R				

TÜRKİYE DEPREM ETKİNLİĞİ (2010 YILI ŞUBAT AYI)

No	Tarih - Date			Zaman - Time			Koordinat - Coordinate			Derinlik - Depth		Magnitüd - Magnitude									
	Gün	Ay	Yıl	Saat	Dak.	San.	Enlem-K	Boylam-D	Ref	Km.	Ref	Ms	Ref	Mb	Ref	Md	Ref	MI	Ref	Mw	Ref
101	5	2	2010	6	33	30.6	41.94	26.30	R	5	R					2.8	R				
102	5	2	2010	7	55	57.8	38.54	25.63	R	13	R					3.1	R				
103	5	2	2010	10	54	51.2	39.84	27.20	R	5	R					2.7	R				
104	5	2	2010	13	51	26.3	37.16	27.89	R	5	R					2.5	R				
105	5	2	2010	13	59	13.7	40.37	26.91	R	24	R					2.2	R				
106	5	2	2010	14	21	26.8	40.81	26.40	R	4	R					2.0	R				
107	5	2	2010	14	22	22.0	39.41	38.46	R	20	R					2.3	R				
108	5	2	2010	14	50	15.3	38.43	27.32	R	9	R					2.5	R				
109	5	2	2010	15	29	35.7	39.35	25.91	R	3	R					2.8	R				
110	5	2	2010	17	15	55.5	38.58	41.17	R	5	R					2.6	R				
111	5	2	2010	17	44	5.2	39.55	38.06	R	5	R					3.4	R				
112	5	2	2010	18	29	11.8	36.52	29.17	R	10	R					2.7	R				
113	5	2	2010	19	23	40.2	40.26	25.55	R	9	R					2.7	R				
114	5	2	2010	20	6	2.7	40.24	31.69	R	14	R					2.6	R				
115	5	2	2010	20	43	1.1	40.08	25.24	R	6	R					2.5	R				
116	5	2	2010	21	2	22.1	35.25	27.25	R	18	R					3.8	R				
117	5	2	2010	21	59	52.5	38.83	27.67	R	13	R					2.6	R				
118	5	2	2010	22	18	4.5	39.41	28.98	R	10	R					2.5	R				
119	5	2	2010	22	25	45.0	38.32	29.77	R	6	R					2.6	R				
120	5	2	2010	23	58	56.4	37.70	26.45	R	6	R					2.9	R				

TÜRKİYE DEPREM ETKİNLİĞİ (2010 YILI ŞUBAT AYI)

No	Tarih - Date			Zaman - Time			Koordinat - Coordinate			Derinlik - Depth		Magnitüd - Magnitude									
	Gün	Ay	Yıl	Saat	Dak.	San.	Enlem-K	Boylam-D	Ref	Km.	Ref	Ms	Ref	Mb	Ref	Md	Ref	MI	Ref	Mw	Ref
121	6	2	2010	1	53	17.9	37.09	29.20	R	7	R					2.8	R				
122	6	2	2010	2	6	23.3	39.18	41.80	R	15	R					2.8	R				
123	6	2	2010	2	16	53.0	36.74	31.54	R	5	R					2.9	R				
124	6	2	2010	2	50	17.5	37.47	42.64	R	5	R					2.6	R				
125	6	2	2010	4	6	59.6	36.99	29.34	R	6	R					3.0	R				
126	6	2	2010	5	8	59.3	40.69	29.38	R	6	R					2.8	R				
127	6	2	2010	5	15	6.6	40.59	37.76	R	11	R					2.9	R				
128	6	2	2010	5	15	13.1	38.34	38.78	R	9	R					3.0	R				
129	6	2	2010	6	36	44.6	39.23	27.28	R	11	R					2.9	R				
130	6	2	2010	9	33	10.7	40.20	30.01	R	12	R					2.6	R				
131	6	2	2010	10	2	47.3	37.20	27.88	R	5	R					2.5	R				
132	6	2	2010	11	14	54.6	38.26	31.83	R	14	R					2.6	R				
133	6	2	2010	11	29	26.3	34.88	34.15	R	28	R					3.0	R				
134	6	2	2010	12	52	36.6	39.29	38.37	R	9	R					2.5	R				
135	6	2	2010	13	30	34.0	37.17	36.12	R	10	R					2.5	R				
136	6	2	2010	14	0	2.9	37.94	32.26	R	2	R					2.6	R				
137	6	2	2010	14	7	44.5	39.44	31.96	R	2	R					2.8	R				
138	6	2	2010	14	52	23.4	38.86	27.88	R	5	R					2.6	R				
139	6	2	2010	15	8	30.4	37.17	27.89	R	17	R					2.6	R				
140	6	2	2010	16	49	52.8	38.88	39.42	R	4	R					2.6	R				

TÜRKİYE DEPREM ETKİNLİĞİ (2010 YILI ŞUBAT AYI)

No	Tarih - Date			Zaman - Time			Koordinat - Coordinate			Derinlik - Depth		Magnitüd - Magnitude									
	Gün	Ay	Yıl	Saat	Dak.	San.	Enlem-K	Boylam-D	Ref	Km.	Ref	Ms	Ref	Mb	Ref	Md	Ref	MI	Ref	Mw	Ref
141	6	2	2010	17	27	10.1	40.04	25.42	R	5	R					3.0	R				
142	6	2	2010	17	48	42.0	36.97	29.29	R	11	R					2.7	R				
143	6	2	2010	20	0	33.6	39.11	29.02	R	9	R					2.6	R				
144	6	2	2010	20	3	19.6	37.01	28.42	R	4	R					2.9	R				
145	6	2	2010	20	14	16.0	39.17	29.01	R	11	R					2.3	R				
146	6	2	2010	20	39	40.0	36.16	28.50	R	28	R					2.9	R				
147	7	2	2010	0	2	32.3	34.16	32.21	R	33	R					3.2	R				
148	7	2	2010	0	36	55.2	39.09	29.08	R	6	R					2.4	R				
149	7	2	2010	0	54	57.3	40.14	41.31	R	19	R					2.8	R				
150	7	2	2010	1	9	57.5	40.82	30.64	R	14	R					2.7	R				
151	7	2	2010	1	24	32.9	37.77	29.49	R	5	R					3.0	R				
152	7	2	2010	1	28	58.2	38.22	26.84	R	8	R					2.5	R				
153	7	2	2010	3	7	20.5	38.46	39.43	R	10	R					2.8	R				
154	7	2	2010	3	31	27.7	40.92	33.88	R	13	R					2.9	R				
155	7	2	2010	3	48	16.3	40.35	32.88	R	5	R					2.6	R				
156	7	2	2010	3	55	27.3	36.89	28.88	R	5	R					2.8	R				
157	7	2	2010	4	5	21.2	40.46	34.65	R	7	R					2.9	R				
158	7	2	2010	4	15	52.2	38.83	26.00	R	8	R							3.0	R		
159	7	2	2010	4	59	32.1	38.95	27.93	R	11	R					2.7	R				
160	7	2	2010	5	6	23.3	37.57	35.58	R	8	R					2.7	R				

TÜRKİYE DEPREM ETKİNLİĞİ (2010 YILI ŞUBAT AYI)

No	Tarih - Date			Zaman - Time			Koordinat - Coordinate			Derinlik - Depth		Magnitüd - Magnitude									
	Gün	Ay	Yıl	Saat	Dak.	San.	Enlem-K	Boylam-D	Ref	Km.	Ref	Ms	Ref	Mb	Ref	Md	Ref	MI	Ref	Mw	Ref
161	7	2	2010	5	15	42.5	38.69	38.69	R	5	R					2.8	R				
162	7	2	2010	8	22	31.1	37.49	35.73	R	13	R					2.7	R				
163	7	2	2010	14	29	22.8	39.38	38.53	R	8	R					2.2	R				
164	7	2	2010	14	33	52.0	38.18	26.62	R	10	R							3.5	R		
165	7	2	2010	15	12	38.2	38.18	38.93	R	20	R					3.0	R				
166	7	2	2010	15	28	54.7	35.88	29.36	R	20	R							2.8	R		
167	7	2	2010	15	30	36.8	39.97	39.73	R	5	R					2.9	R				
168	7	2	2010	16	2	1.3	38.82	25.88	R	5	R							2.9	R		
169	7	2	2010	17	21	32.1	39.77	30.59	R	5	R							3.7	R		
170	7	2	2010	19	35	17.5	38.59	41.12	R	4	R					3.0	R				
171	7	2	2010	19	41	36.1	37.05	28.89	R	5	R					2.9	R				
172	7	2	2010	19	50	27.4	34.55	40.46	R	22	R							3.8	R		
173	7	2	2010	19	58	50.6	39.71	30.60	R	6	R					2.6	R				
174	7	2	2010	20	14	37.1	39.73	30.54	R	5	R					2.9	R				
175	7	2	2010	22	19	5.8	36.70	43.24	R	5	R					2.9	R				
176	7	2	2010	23	17	47.2	38.61	41.09	R	9	R					2.9	R				
177	8	2	2010	1	41	12.0	38.32	26.58	R	6	R					2.4	R				
178	8	2	2010	2	20	5.8	38.99	27.85	R	12	R					2.4	R				
179	8	2	2010	2	36	39.3	39.86	38.65	R	8	R					2.7	R				
180	8	2	2010	2	46	6.2	40.44	29.87	R	3	R					3.2	R				

TÜRKİYE DEPREM ETKİNLİĞİ (2010 YILI ŞUBAT AYI)

No	Tarih - Date			Zaman - Time			Koordinat - Coordinate			Derinlik - Depth		Magnitüd - Magnitude									
	Gün	Ay	Yıl	Saat	Dak.	San.	Enlem-K	Boylam-D	Ref	Km.	Ref	Ms	Ref	Mb	Ref	Md	Ref	MI	Ref	Mw	Ref
181	8	2	2010	4	13	31.9	40.17	25.15	R	9	R					3.0	R				
182	8	2	2010	6	57	24.8	39.57	25.93	R	15	R					2.6	R				
183	8	2	2010	10	8	13.0	37.45	37.06	R	4	R					2.3	R				
184	8	2	2010	14	9	36.6	36.41	39.28	R	19	R					3.0	R				
185	8	2	2010	14	22	49.3	40.27	27.86	R	6	R					2.5	R				
186	8	2	2010	18	21	16.5	39.21	43.72	R	3	R					2.9	R				
187	8	2	2010	23	3	44.0	40.80	43.81	R	5	R					3.1	R				
188	8	2	2010	23	34	10.4	38.68	33.51	R	11	R					2.9	R				
189	9	2	2010	6	20	59.4	37.95	32.52	R	4	R					2.8	R				
190	9	2	2010	6	31	45.9	39.56	28.14	R	4	R					2.1	R				
191	9	2	2010	6	32	6.6	40.07	28.06	R	8	R					2.6	R				
192	9	2	2010	6	55	30.6	39.86	27.87	R	21	R					2.4	R				
193	9	2	2010	9	42	12.5	39.09	30.04	R	14	R					2.8	R				
194	9	2	2010	10	2	23.9	40.25	36.51	R	14	R					2.8	R				
195	9	2	2010	11	55	43.9	39.76	38.81	R	8	R					2.6	R				
196	9	2	2010	12	30	56.7	39.48	34.05	R	2	R					2.5	R				
197	9	2	2010	12	54	50.8	41.23	36.34	R	5	R					2.8	R				
198	9	2	2010	13	50	22.3	36.93	29.06	R	20	R					2.8	R				
199	9	2	2010	13	57	18.0	39.94	27.33	R	5	R					2.8	R				
200	9	2	2010	14	28	5.9	40.37	28.84	R	6	R					2.9	R				

TÜRKİYE DEPREM ETKİNLİĞİ (2010 YILI ŞUBAT AYI)

No	Tarih - Date			Zaman - Time			Koordinat - Coordinate			Derinlik - Depth		Magnitüd - Magnitude									
	Gün	Ay	Yıl	Saat	Dak.	San.	Enlem-K	Boylam-D	Ref	Km.	Ref	Ms	Ref	Mb	Ref	Md	Ref	MI	Ref	Mw	Ref
201	9	2	2010	17	29	18.1	37.07	36.16	R	11	R					2.7	R				
202	9	2	2010	17	46	25.8	39.44	33.07	R	5	R					2.9	R				
203	9	2	2010	18	44	42.2	35.29	27.78	R	11	R							3.2	R		
204	9	2	2010	18	48	2.5	35.33	27.89	R	37	R							3.5	R		
205	9	2	2010	19	4	2.3	37.00	27.85	R	6	R					2.7	R				
206	9	2	2010	19	34	22.0	35.93	28.58	R	10	R					2.9	R				
207	9	2	2010	20	50	59.9	37.83	37.22	R	8	R					2.7	R				
208	9	2	2010	21	20	11.0	40.38	26.86	R	6	R					2.7	R				
209	9	2	2010	23	6	22.7	38.61	42.84	R	5	R					2.9	R				
210	9	2	2010	23	27	13.3	38.84	27.72	R	7	R					3.0	R				
211	10	2	2010	2	19	51.2	37.17	28.61	R	24	R					2.8	R				
212	10	2	2010	5	10	30.2	40.46	33.31	R	2	R							3.5	R		
213	10	2	2010	8	7	39.1	40.97	39.56	R	5	R					2.1	R				
214	10	2	2010	9	11	43.0	39.33	38.49	R	13	R					2.7	R				
215	10	2	2010	9	24	57.5	39.35	33.17	R	9	R					2.8	R				
216	10	2	2010	9	57	26.2	39.40	33.26	R	8	R					2.3	R				
217	10	2	2010	10	23	15.0	39.93	33.10	R	11	R					2.2	R				
218	10	2	2010	10	52	57.7	38.01	38.24	R	21	R					2.2	R				
219	10	2	2010	11	49	16.0	40.35	28.40	R	9	R					2.6	R				
220	10	2	2010	12	4	58.7	38.69	33.52	R	5	R					2.4	R				

TÜRKİYE DEPREM ETKİNLİĞİ (2010 YILI ŞUBAT AYI)

No	Tarih - Date			Zaman - Time			Koordinat - Coordinate			Derinlik - Depth		Magnitüd - Magnitude									
	Gün	Ay	Yıl	Saat	Dak.	San.	Enlem-K	Boylam-D	Ref	Km.	Ref	Ms	Ref	Mb	Ref	Md	Ref	MI	Ref	Mw	Ref
221	10	2	2010	12	49	30.5	38.54	40.77	R	9	R					2.9	R				
222	10	2	2010	13	32	22.6	37.58	35.38	R	5	R					2.7	R				
223	10	2	2010	14	57	21.8	38.98	29.96	R	11	R					2.5	R				
224	10	2	2010	15	7	20.3	35.96	31.08	R	14	R					3.5	R				
225	10	2	2010	15	39	10.2	39.35	38.54	R	17	R					3.1	R				
226	10	2	2010	17	26	13.8	38.96	29.98	R	5	R					3.0	R				
227	10	2	2010	18	56	50.2	40.00	40.71	R	3	R					2.9	R				
228	10	2	2010	20	43	49.4	40.62	43.37	R	21	R					3.2	R				
229	10	2	2010	21	47	53.2	40.59	27.21	R	4	R					3.1	R	3.2	R		
230	11	2	2010	0	25	39.4	37.75	26.48	R	2	R					3.0	R				
231	11	2	2010	0	39	58.4	37.65	36.38	R	5	R					2.6	R				
232	11	2	2010	1	9	52.9	38.58	40.86	R	4	R					3.0	R				
233	11	2	2010	2	39	1.6	37.70	26.50	R	5	R					2.9	R				
234	11	2	2010	2	44	27.2	39.21	41.45	R	3	R					3.4	R	3.3	R		
235	11	2	2010	2	45	10.9	37.71	26.45	R	5	R					3.4	R	3.3	R		
236	11	2	2010	5	19	28.0	38.02	36.44	R	6	R					2.8	R				
237	11	2	2010	6	2	31.3	38.91	35.72	R	2	R					3.2	R				
238	11	2	2010	6	48	14.0	40.73	37.06	R	8	R					2.8	R				
239	11	2	2010	7	10	58.2	39.27	28.24	R	5	R					2.7	R				
240	11	2	2010	9	28	37.2	41.66	32.62	R	2	R					3.0	R				

TÜRKİYE DEPREM ETKİNLİĞİ (2010 YILI ŞUBAT AYI)

No	Tarih - Date			Zaman - Time			Koordinat - Coordinate			Derinlik - Depth		Magnitüd - Magnitude									
	Gün	Ay	Yıl	Saat	Dak.	San.	Enlem-K	Boylam-D	Ref	Km.	Ref	Ms	Ref	Mb	Ref	Md	Ref	MI	Ref	Mw	Ref
241	11	2	2010	10	21	1.6	39.71	29.63	R	25	R					3.0	R				
242	11	2	2010	11	49	41.5	37.80	26.48	R	6	R					2.9	R				
243	11	2	2010	13	31	14.7	41.38	41.27	R	20	R					3.2	R				
244	11	2	2010	15	41	15.3	37.48	36.20	R	4	R					3.2	R				
245	11	2	2010	16	29	40.6	33.36	47.27	N	12	N			4.6	N						
246	11	2	2010	18	59	35.2	40.02	25.41	R	5	R							3.4	R		
247	11	2	2010	19	29	16.8	38.36	39.23	R	3	R					3.3	R	3.2	R		
248	11	2	2010	19	55	56.9	39.90	25.47	R	5	R					2.9	R				
249	11	2	2010	20	36	31.8	39.51	33.24	R	7	R					2.8	R				
250	11	2	2010	21	29	40.0	40.74	30.54	R	8	R					2.9	R				
251	11	2	2010	21	56	31.5	34.00	25.39	N	14	N			5.4	N						
252	11	2	2010	22	21	30.4	37.46	42.89	R	6	R					2.8	R				
253	11	2	2010	23	25	13.6	38.18	36.63	R	6	R					2.6	R				
254	12	2	2010	0	5	55.1	37.81	31.16	R	6	R					2.8	R				
255	12	2	2010	2	53	4.1	39.55	38.01	R	21	R					3.0	R				
256	12	2	2010	2	54	24.5	39.37	33.15	R	6	R					3.2	R				
257	12	2	2010	3	58	40.1	39.35	33.05	R	5	R					3.2	R				
258	12	2	2010	4	43	28.6	39.28	27.87	R	9	R					3.0	R				
259	12	2	2010	5	4	35.5	39.40	33.20	R	9	R					2.9	R				
260	12	2	2010	6	0	29.1	39.40	33.00	R	5	R					2.7	R				

TÜRKİYE DEPREM ETKİNLİĞİ (2010 YILI ŞUBAT AYI)

No	Tarih - Date			Zaman - Time			Koordinat - Coordinate			Derinlik - Depth		Magnitüd - Magnitude									
	Gün	Ay	Yıl	Saat	Dak.	San.	Enlem-K	Boylam-D	Ref	Km.	Ref	Ms	Ref	Mb	Ref	Md	Ref	MI	Ref	Mw	Ref
261	12	2	2010	6	15	30.0	34.60	33.16	R	2	R					2.7	R				
262	12	2	2010	7	33	4.6	37.91	32.60	R	13	R					2.3	R				
263	12	2	2010	8	53	58.5	39.03	29.58	R	6	R					2.4	R				
264	12	2	2010	10	5	6.4	37.94	32.14	R	6	R					2.5	R				
265	12	2	2010	11	8	36.6	37.81	26.50	R	12	R							3.1	R		
266	12	2	2010	11	14	20.7	37.10	27.98	R	2	R					2.7	R				
267	12	2	2010	11	36	43.3	37.00	35.57	R	16	R					2.1	R				
268	12	2	2010	12	40	14.4	39.52	33.49	R	5	R					3.0	R				
269	12	2	2010	13	44	26.0	40.99	36.05	R	6	R					2.3	R				
270	12	2	2010	13	54	9.8	39.25	41.21	R	7	R					3.0	R				
271	12	2	2010	14	17	14.8	40.61	25.98	R	8	R					2.1	R				
272	12	2	2010	14	44	18.7	39.54	38.68	R	6	R					2.1	R				
273	12	2	2010	17	5	51.0	37.85	29.07	R	5	R					2.8	R				
274	12	2	2010	17	37	35.3	39.38	33.19	R	8	R					3.0	R				
275	12	2	2010	18	9	24.1	39.02	28.08	R	10	R					2.7	R				
276	12	2	2010	21	0	4.2	34.79	24.81	N	42	N			4.2	N						
277	12	2	2010	23	1	2.3	39.83	38.98	R	9	R					2.5	R				
278	13	2	2010	1	31	29.9	39.32	33.10	R	8	R					2.6	R				
279	13	2	2010	2	41	2.7	40.08	41.97	R	8	R					2.7	R				
280	13	2	2010	3	36	53.0	40.82	27.78	R	5	R					2.6	R				

TÜRKİYE DEPREM ETKİNLİĞİ (2010 YILI ŞUBAT AYI)

No	Tarih - Date			Zaman - Time			Koordinat - Coordinate			Derinlik - Depth		Magnitüd - Magnitude									
	Gün	Ay	Yıl	Saat	Dak.	San.	Enlem-K	Boylam-D	Ref	Km.	Ref	Ms	Ref	Mb	Ref	Md	Ref	MI	Ref	Mw	Ref
281	13	2	2010	4	14	11.1	39.36	33.14	R	6	R					3.0	R				
282	13	2	2010	4	16	10.2	38.08	32.61	R	5	R					2.4	R				
283	13	2	2010	4	21	25.3	39.31	33.08	R	3	R					2.4	R				
284	13	2	2010	5	49	2.4	36.72	29.44	R	12	R					3.2	R				
285	13	2	2010	6	53	2.6	40.79	27.83	R	14	R					2.9	R				
286	13	2	2010	7	1	40.4	40.77	28.04	R	5	R					2.6	R				
287	13	2	2010	7	6	18.0	39.40	38.40	R	8	R					3.5	R				
288	13	2	2010	7	59	27.5	40.81	27.80	R	7	R					2.7	R				
289	13	2	2010	8	10	20.4	37.25	27.57	R	10	R					2.8	R				
290	13	2	2010	8	44	19.8	35.62	26.78	R	7	R							3.5	R		
291	13	2	2010	10	22	12.6	39.41	33.12	R	12	R					2.9	R				
292	13	2	2010	10	27	49.6	39.54	33.22	R	13	R					2.4	R				
293	13	2	2010	10	43	49.6	39.32	38.44	R	8	R					2.7	R				
294	13	2	2010	10	51	50.6	39.56	43.65	R	5	R					2.8	R				
295	13	2	2010	11	44	33.4	37.30	27.54	R	10	R					2.7	R				
296	13	2	2010	11	51	24.9	36.42	26.62	R	28	R							2.9	R		
297	13	2	2010	13	16	19.2	39.34	33.17	R	14	R					3.2	R				
298	13	2	2010	13	35	38.3	39.26	33.13	R	8	R					2.8	R				
299	13	2	2010	14	2	37.1	39.52	33.16	R	5	R					2.3	R				
300	13	2	2010	14	30	58.3	39.32	38.42	R	11	R					3.0	R				

TÜRKİYE DEPREM ETKİNLİĞİ (2010 YILI ŞUBAT AYI)

No	Tarih - Date			Zaman - Time			Koordinat - Coordinate			Derinlik - Depth		Magnitüd - Magnitude									
	Gün	Ay	Yıl	Saat	Dak.	San.	Enlem-K	Boylam-D	Ref	Km.	Ref	Ms	Ref	Mb	Ref	Md	Ref	MI	Ref	Mw	Ref
301	13	2	2010	14	36	38.6	37.50	42.63	R	21	R					2.4	R				
302	13	2	2010	14	38	3.5	40.02	42.46	R	10	R					2.9	R				
303	13	2	2010	14	59	25.6	40.22	36.65	R	5	R					2.7	R				
304	13	2	2010	16	4	58.9	36.92	29.33	R	8	R					2.6	R				
305	13	2	2010	16	26	2.1	38.53	39.52	R	12	R					2.7	R				
306	13	2	2010	17	15	31.5	39.34	40.88	R	9	R					2.8	R				
307	13	2	2010	18	24	41.8	37.22	38.54	R	18	R					2.4	R				
308	13	2	2010	19	31	25.1	36.91	28.20	R	10	R					2.8	R				
309	14	2	2010	0	2	16.4	39.12	43.02	R	28	R					2.5	R				
310	14	2	2010	0	59	48.7	39.96	28.80	R	12	R					2.9	R				
311	14	2	2010	7	52	19.4	36.24	35.81	R	65	R					3.4	R				
312	14	2	2010	9	29	17.9	39.48	39.12	R	6	R					2.5	R				
313	14	2	2010	10	0	54.4	40.05	28.60	R	5	R					2.5	R				
314	14	2	2010	10	2	6.3	40.48	27.02	R	9	R					3.0	R				
315	14	2	2010	10	34	9.3	38.26	43.56	R	11	R					2.8	R				
316	14	2	2010	10	46	9.9	36.42	31.38	R	60	R					3.0	R				
317	14	2	2010	11	57	13.0	38.44	27.24	R	6	R					2.5	R				
318	14	2	2010	12	20	50.0	38.74	40.02	R	6	R							4.1	R		
319	14	2	2010	12	36	10.7	39.38	33.08	R	6	R					2.7	R				
320	14	2	2010	13	1	4.6	38.71	40.05	R	5	R					3.0	R				

TÜRKİYE DEPREM ETKİNLİĞİ (2010 YILI ŞUBAT AYI)

No	Tarih - Date			Zaman - Time			Koordinat - Coordinate			Derinlik - Depth		Magnitüd - Magnitude									
	Gün	Ay	Yıl	Saat	Dak.	San.	Enlem-K	Boylam-D	Ref	Km.	Ref	Ms	Ref	Mb	Ref	Md	Ref	MI	Ref	Mw	Ref
321	14	2	2010	13	21	54.9	38.75	40.09	R	7	R					3.1	R				
322	14	2	2010	13	39	35.5	38.73	40.10	R	5	R					3.3	R	3.3	R		
323	14	2	2010	13	49	28.2	39.21	27.88	R	8	R					2.9	R				
324	14	2	2010	14	16	41.3	38.72	40.05	R	5	R					2.8	R				
325	14	2	2010	14	17	53.3	39.91	33.11	R	6	R					2.9	R				
326	14	2	2010	15	50	5.3	37.94	30.95	R	8	R					3.1	R				
327	14	2	2010	17	13	16.4	40.58	27.45	R	7	R					2.7	R				
328	14	2	2010	17	27	33.1	40.58	27.43	R	8	R					2.5	R				
329	14	2	2010	18	36	57.1	37.50	27.02	R	21	R					2.4	R				
330	14	2	2010	18	44	57.6	40.84	27.82	R	5	R					3.1	R				
331	14	2	2010	20	14	37.4	37.03	34.58	R	4	R					3.3	R				
332	14	2	2010	20	25	4.8	39.74	30.55	R	3	R					3.0	R				
333	14	2	2010	20	43	19.5	38.17	26.65	R	8	R					2.6	R				
334	14	2	2010	20	50	13.8	38.62	26.99	R	14	R					2.9	R				
335	14	2	2010	21	18	42.2	40.23	36.29	R	9	R					2.6	R				
336	14	2	2010	21	25	45.3	38.66	26.62	R	16	R					2.5	R				
337	14	2	2010	22	50	6.6	39.09	26.13	R	24	R					2.6	R				
338	15	2	2010	0	5	2.7	36.08	35.70	R	7	R					2.9	R				
339	15	2	2010	0	12	33.8	36.41	35.56	R	10	R					3.2	R				
340	15	2	2010	1	14	20.0	39.95	42.45	R	9	R					2.8	R				

TÜRKİYE DEPREM ETKİNLİĞİ (2010 YILI ŞUBAT AYI)

No	Tarih - Date			Zaman - Time			Koordinat - Coordinate			Derinlik - Depth		Magnitüd - Magnitude									
	Gün	Ay	Yıl	Saat	Dak.	San.	Enlem-K	Boylam-D	Ref	Km.	Ref	Ms	Ref	Mb	Ref	Md	Ref	MI	Ref	Mw	Ref
341	15	2	2010	2	17	33.0	39.60	41.25	R	16	R					2.7	R				
342	15	2	2010	2	18	7.2	37.03	29.62	R	8	R					2.7	R				
343	15	2	2010	5	25	9.7	39.99	32.74	R	2	R					3.0	R				
344	15	2	2010	6	58	16.0	38.58	40.18	R	14	R					2.9	R				
345	15	2	2010	8	23	58.4	37.27	29.20	R	5	R					2.4	R				
346	15	2	2010	8	47	19.5	37.15	43.19	R	5	R							3.5	R		
347	15	2	2010	9	30	5.1	40.43	26.96	R	10	R					2.7	R				
348	15	2	2010	10	22	59.3	37.02	27.87	R	21	R					2.9	R				
349	15	2	2010	12	46	38.8	38.79	40.11	R	22	R					2.7	R				
350	15	2	2010	12	53	56.8	36.28	29.41	R	16	R					3.4	R				
351	15	2	2010	12	55	21.3	36.22	29.37	R	12	R					3.4	R	3.4	R		
352	15	2	2010	13	43	41.0	37.00	28.18	R	5	R					2.5	R				
353	15	2	2010	16	27	37.1	35.65	31.12	R	23	R					3.6	R				
354	15	2	2010	18	4	35.5	39.37	44.09	R	5	R					3.1	R				
355	15	2	2010	19	41	25.4	37.10	34.54	R	6	R					2.4	R				
356	15	2	2010	20	15	53.8	39.46	32.99	R	5	R					3.3	R				
357	15	2	2010	21	29	51.4	40.01	42.73	R	15	R					2.5	R				
358	15	2	2010	21	50	55.5	39.64	25.85	R	6	R					2.6	R				
359	15	2	2010	22	20	41.3	39.07	29.50	R	5	R					2.4	R				
360	15	2	2010	22	59	22.8	39.52	28.88	R	6	R					2.8	R				

TÜRKİYE DEPREM ETKİNLİĞİ (2010 YILI ŞUBAT AYI)

No	Tarih - Date			Zaman - Time			Koordinat - Coordinate			Derinlik - Depth		Magnitüd - Magnitude									
	Gün	Ay	Yıl	Saat	Dak.	San.	Enlem-K	Boylam-D	Ref	Km.	Ref	Ms	Ref	Mb	Ref	Md	Ref	MI	Ref	Mw	Ref
361	15	2	2010	23	18	35.1	39.51	28.89	R	2	R					2.4	R				
362	16	2	2010	0	30	47.3	37.55	35.55	R	8	R					2.7	R				
363	16	2	2010	1	21	51.0	38.37	27.22	R	5	R					2.4	R				
364	16	2	2010	1	51	3.2	39.40	26.29	R	15	R					2.7	R				
365	16	2	2010	5	31	16.7	37.16	43.77	R	5	R					2.7	R				
366	16	2	2010	6	51	50.4	37.00	28.04	R	15	R					3.4	R				
367	16	2	2010	7	52	50.6	37.03	28.03	R	12	R					2.6	R				
368	16	2	2010	8	26	45.0	39.19	27.58	R	10	R					2.6	R				
369	16	2	2010	8	58	40.6	38.61	39.12	R	6	R					2.9	R				
370	16	2	2010	9	56	10.5	40.23	29.63	R	5	R					2.5	R				
371	16	2	2010	10	8	9.5	37.66	36.47	R	6	R					3.0	R				
372	16	2	2010	10	10	17.0	38.12	32.72	R	24	R					2.6	R				
373	16	2	2010	10	42	1.0	41.61	27.90	R	12	R					2.8	R				
374	16	2	2010	11	5	29.6	37.32	36.29	R	4	R					3.4	R				
375	16	2	2010	11	59	2.6	37.15	28.29	R	12	R					2.5	R				
376	16	2	2010	12	13	54.0	41.49	27.92	R	12	R					2.9	R				
377	16	2	2010	12	14	0.9	37.05	28.45	R	17	R					2.6	R				
378	16	2	2010	12	45	48.8	38.97	28.08	R	13	R					2.4	R				
379	16	2	2010	13	5	13.6	41.26	35.72	R	5	R					3.0	R				
380	16	2	2010	13	17	20.2	39.99	26.76	R	6	R					2.7	R				

TÜRKİYE DEPREM ETKİNLİĞİ (2010 YILI ŞUBAT AYI)

No	Tarih - Date			Zaman - Time			Koordinat - Coordinate			Derinlik - Depth		Magnitüd - Magnitude									
	Gün	Ay	Yıl	Saat	Dak.	San.	Enlem-K	Boylam-D	Ref	Km.	Ref	Ms	Ref	Mb	Ref	Md	Ref	MI	Ref	Mw	Ref
381	16	2	2010	13	28	39.9	38.52	26.84	R	13	R					2.8	R				
382	16	2	2010	14	16	13.7	38.49	29.71	R	5	R					2.8	R				
383	16	2	2010	14	39	20.1	40.35	37.48	R	8	R					2.8	R				
384	16	2	2010	15	14	33.0	37.19	27.88	R	17	R					2.7	R				
385	16	2	2010	15	29	23.9	39.65	29.58	R	15	R					2.7	R				
386	16	2	2010	15	29	47.9	37.07	38.87	R	8	R					3.1	R				
387	16	2	2010	17	12	46.7	39.53	27.14	R	8	R					2.8	R				
388	16	2	2010	17	30	58.8	37.95	38.09	R	6	R					2.9	R				
389	16	2	2010	18	24	20.1	38.54	40.74	R	3	R					3.0	R				
390	16	2	2010	19	44	26.5	37.21	28.75	R	12	R					3.4	R				
391	16	2	2010	19	57	41.4	36.65	28.63	R	13	R					2.4	R				
392	16	2	2010	19	58	34.0	37.22	28.74	R	13	R					2.5	R				
393	16	2	2010	20	1	33.0	39.29	27.88	R	6	R					3.1	R				
394	16	2	2010	21	27	2.5	40.03	25.41	R	9	R					3.0	R				
395	16	2	2010	21	49	23.7	38.97	28.06	R	18	R					2.5	R				
396	16	2	2010	22	7	57.1	38.80	40.09	R	26	R					2.7	R				
397	16	2	2010	22	37	9.2	40.62	34.49	R	5	R					2.7	R				
398	16	2	2010	22	49	7.1	40.04	25.41	R	7	R					3.1	R				
399	16	2	2010	23	10	34.6	40.70	34.62	R	10	R					2.6	R				
400	17	2	2010	0	45	19.3	39.34	28.13	R	8	R					2.7	R				

TÜRKİYE DEPREM ETKİNLİĞİ (2010 YILI ŞUBAT AYI)

No	Tarih - Date			Zaman - Time			Koordinat - Coordinate			Derinlik - Depth		Magnitüd - Magnitude									
	Gün	Ay	Yıl	Saat	Dak.	San.	Enlem-K	Boylam-D	Ref	Km.	Ref	Ms	Ref	Mb	Ref	Md	Ref	MI	Ref	Mw	Ref
401	17	2	2010	0	49	24.2	36.97	34.66	R	13	R					2.6	R				
402	17	2	2010	1	27	59.0	36.98	27.73	R	5	R					2.8	R				
403	17	2	2010	1	54	33.4	39.45	33.00	R	6	R					2.7	R				
404	17	2	2010	2	21	24.4	37.16	31.68	R	5	R					3.2	R				
405	17	2	2010	2	48	20.6	38.86	26.99	R	15	R					2.8	R				
406	17	2	2010	3	24	39.2	37.91	27.39	R	12	R					2.7	R				
407	17	2	2010	4	38	43.2	39.85	40.45	R	5	R					3.0	R				
408	17	2	2010	4	40	25.9	38.58	40.87	R	6	R					2.7	R				
409	17	2	2010	4	51	3.7	39.95	38.36	R	8	R					3.0	R				
410	17	2	2010	4	58	47.5	34.95	32.73	R	29	R					2.6	R				
411	17	2	2010	5	18	13.8	38.60	39.68	R	10	R					3.0	R				
412	17	2	2010	5	36	35.6	38.57	26.02	R	15	R					3.2	R				
413	17	2	2010	5	42	36.8	40.74	33.02	R	5	R					3.3	R				
414	17	2	2010	7	15	29.2	37.07	34.59	R	5	R					2.4	R				
415	17	2	2010	7	19	24.9	39.36	28.98	R	6	R					2.6	R	2.4	R		
416	17	2	2010	8	29	56.9	39.12	27.39	R	9	R					2.7	R				
417	17	2	2010	10	23	57.0	39.35	38.48	R	15	R					2.6	R				
418	17	2	2010	10	27	2.1	38.92	26.99	R	10	R					2.9	R				
419	17	2	2010	10	55	43.3	37.16	27.88	R	8	R					2.7	R				
420	17	2	2010	12	37	39.1	40.14	29.59	R	5	R					2.3	R				

TÜRKİYE DEPREM ETKİNLİĞİ (2010 YILI ŞUBAT AYI)

No	Tarih - Date			Zaman - Time			Koordinat - Coordinate			Derinlik - Depth		Magnitüd - Magnitude									
	Gün	Ay	Yıl	Saat	Dak.	San.	Enlem-K	Boylam-D	Ref	Km.	Ref	Ms	Ref	Mb	Ref	Md	Ref	MI	Ref	Mw	Ref
421	17	2	2010	12	41	13.1	37.97	34.78	R	6	R					2.8	R				
422	17	2	2010	14	4	7.8	36.96	39.44	R	6	R					2.9	R				
423	17	2	2010	15	8	14.1	37.63	42.65	R	8	R					2.5	R	2.4	R		
424	17	2	2010	15	28	57.3	41.38	35.87	R	5	R					2.8	R				
425	17	2	2010	17	39	56.7	36.77	28.02	R	31	R					2.4	R				
426	17	2	2010	17	42	23.5	37.09	34.56	R	11	R					2.2	R				
427	17	2	2010	20	47	6.3	39.64	39.79	R	6	R					2.8	R				
428	17	2	2010	22	36	27.0	36.06	28.09	R	78	R					3.1	R				
429	17	2	2010	22	46	47.2	37.10	34.52	R	7	R					2.8	R				
430	18	2	2010	0	0	11.5	37.11	28.68	R	2	R					2.6	R				
431	18	2	2010	2	37	22.3	38.97	44.56	R	5	R					2.9	R				
432	18	2	2010	3	38	36.7	38.16	31.01	R	10	R					2.7	R				
433	18	2	2010	4	12	9.6	38.75	40.50	R	5	R					2.7	R				
434	18	2	2010	4	27	51.1	37.21	27.58	R	6	R					2.4	R				
435	18	2	2010	4	56	12.6	40.83	27.77	R	6	R					2.8	R				
436	18	2	2010	5	53	25.6	38.65	39.66	R	14	R					2.7	R				
437	18	2	2010	7	40	34.0	39.33	38.48	R	14	R					2.8	R				
438	18	2	2010	8	10	19.5	39.36	38.47	R	16	R					2.7	R				
439	18	2	2010	9	44	0.8	35.31	33.47	R	5	R					2.7	R				
440	18	2	2010	9	48	1.1	37.25	28.77	R	12	R					2.6	R				

TÜRKİYE DEPREM ETKİNLİĞİ (2010 YILI ŞUBAT AYI)

No	Tarih - Date			Zaman - Time			Koordinat - Coordinate			Derinlik - Depth		Magnitüd - Magnitude									
	Gün	Ay	Yıl	Saat	Dak.	San.	Enlem-K	Boylam-D	Ref	Km.	Ref	Ms	Ref	Mb	Ref	Md	Ref	MI	Ref	Mw	Ref
441	18	2	2010	9	54	24.2	37.33	27.89	R	6	R					2.7	R				
442	18	2	2010	10	14	43.8	34.83	27.85	R	14	R							3.2	R		
443	18	2	2010	10	17	0.8	37.14	27.88	R	5	R					2.5	R				
444	18	2	2010	10	18	19.2	37.15	27.87	R	14	R					2.5	R				
445	18	2	2010	10	29	19.3	39.54	38.55	R	5	R					2.9	R				
446	18	2	2010	10	32	30.6	38.00	27.79	R	2	R					2.2	R				
447	18	2	2010	10	34	1.7	37.02	39.25	R	12	R					3.1	R				
448	18	2	2010	10	48	42.9	35.34	33.50	R	15	R					2.9	R				
449	18	2	2010	11	3	1.5	40.16	30.03	R	19	R					2.4	R				
450	18	2	2010	11	14	22.1	38.31	34.87	R	5	R					3.0	R				
451	18	2	2010	11	58	29.7	39.35	33.15	R	7	R					2.6	R				
452	18	2	2010	12	41	6.7	38.45	41.37	R	15	R					2.6	R				
453	18	2	2010	12	56	19.5	37.18	27.91	R	23	R					2.4	R				
454	18	2	2010	13	28	7.6	39.45	31.20	R	12	R					2.8	R				
455	18	2	2010	14	20	0.3	38.90	27.87	R	5	R					2.6	R				
456	18	2	2010	15	47	30.8	40.43	35.01	R	3	R					2.7	R				
457	18	2	2010	16	15	7.2	39.04	29.61	R	5	R					2.6	R				
458	18	2	2010	16	21	8.8	40.22	27.51	R	8	R					2.8	R				
459	18	2	2010	17	48	9.1	39.03	29.62	R	4	R					3.1	R				
460	18	2	2010	18	0	47.4	39.34	33.17	R	5	R					3.3	R				

TÜRKİYE DEPREM ETKİNLİĞİ (2010 YILI ŞUBAT AYI)

No	Tarih - Date			Zaman - Time			Koordinat - Coordinate			Derinlik - Depth		Magnitüd - Magnitude									
	Gün	Ay	Yıl	Saat	Dak.	San.	Enlem-K	Boylam-D	Ref	Km.	Ref	Ms	Ref	Mb	Ref	Md	Ref	MI	Ref	Mw	Ref
461	18	2	2010	18	48	36.6	37.12	34.49	R	14	R					2.7	R				
462	18	2	2010	19	2	9.4	39.03	29.56	R	6	R					2.7	R				
463	18	2	2010	19	27	18.8	41.01	40.04	R	7	R					2.8	R				
464	18	2	2010	19	45	40.8	39.40	33.21	R	7	R					2.7	R				
465	18	2	2010	20	13	0.2	39.41	33.22	R	5	R					2.5	R				
466	18	2	2010	20	30	43.9	40.04	42.33	R	8	R					2.6	R				
467	18	2	2010	20	49	30.0	39.28	29.29	R	24	R					2.6	R				
468	18	2	2010	21	46	20.7	39.07	29.61	R	5	R					2.9	R				
469	18	2	2010	22	17	50.8	37.06	27.61	R	8	R					2.7	R				
470	18	2	2010	22	27	21.8	39.45	33.26	R	5	R					2.7	R				
471	18	2	2010	22	35	38.1	37.65	26.90	R	5	R					2.5	R				
472	18	2	2010	23	20	23.4	37.95	29.16	R	10	R					2.9	R				
473	19	2	2010	0	35	0.2	40.00	33.10	R	8	R							4.1	R		
474	19	2	2010	1	0	25.2	39.97	33.18	R	9	R					3.0	R				
475	19	2	2010	1	2	30.6	37.92	28.94	R	5	R					2.5	R				
476	19	2	2010	1	9	7.3	37.23	35.88	R	9	R					2.6	R				
477	19	2	2010	1	18	13.0	40.56	27.36	R	14	R					1.8	R				
478	19	2	2010	2	10	59.0	37.51	28.93	R	5	R					2.6	R				
479	19	2	2010	3	37	5.6	35.36	32.35	R	36	R					3.0	R				
480	19	2	2010	3	39	20.3	35.95	30.62	R	18	R					3.0	R				

TÜRKİYE DEPREM ETKİNLİĞİ (2010 YILI ŞUBAT AYI)

No	Tarih - Date			Zaman - Time			Koordinat - Coordinate			Derinlik - Depth		Magnitüd - Magnitude									
	Gün	Ay	Yıl	Saat	Dak.	San.	Enlem-K	Boylam-D	Ref	Km.	Ref	Ms	Ref	Mb	Ref	Md	Ref	MI	Ref	Mw	Ref
481	19	2	2010	4	1	32.5	39.96	33.11	R	19	R					2.6	R				
482	19	2	2010	4	4	57.9	39.98	33.17	R	6	R					2.8	R				
483	19	2	2010	4	6	6.3	39.99	33.16	R	9	R					2.7	R				
484	19	2	2010	4	29	44.8	36.94	27.58	R	14	R					2.5	R				
485	19	2	2010	5	14	15.0	38.82	40.71	R	16	R					2.6	R				
486	19	2	2010	5	29	27.4	38.52	40.70	R	13	R					2.5	R				
487	19	2	2010	6	3	24.7	38.62	26.29	R	18	R					3.0	R				
488	19	2	2010	7	36	58.3	40.81	34.52	R	17	R					2.8	R				
489	19	2	2010	8	13	24.4	40.64	27.70	R	10	R					1.6	R				
490	19	2	2010	10	21	41.3	39.57	30.12	R	16	R					2.7	R				
491	19	2	2010	10	54	51.3	37.51	28.08	R	17	R					2.4	R				
492	19	2	2010	11	18	15.4	37.53	35.38	R	5	R					2.4	R				
493	19	2	2010	13	25	38.2	37.15	28.99	R	4	R					3.1	R				
494	19	2	2010	13	50	41.6	39.30	38.47	R	14	R					2.6	R				
495	19	2	2010	14	11	31.7	39.29	38.57	R	12	R					2.4	R				
496	19	2	2010	14	19	17.6	39.35	38.48	R	16	R					2.8	R				
497	19	2	2010	17	26	59.1	38.96	41.27	R	2	R					3.0	R				
498	19	2	2010	19	11	56.9	39.01	26.72	R	6	R					2.9	R				
499	19	2	2010	20	24	37.4	37.46	36.24	R	5	R					3.2	R				
500	19	2	2010	23	51	29.6	40.85	28.65	R	5	R					2.9	R				

TÜRKİYE DEPREM ETKİNLİĞİ (2010 YILI ŞUBAT AYI)

No	Tarih - Date			Zaman - Time			Koordinat - Coordinate			Derinlik - Depth		Magnitüd - Magnitude									
	Gün	Ay	Yıl	Saat	Dak.	San.	Enlem-K	Boylam-D	Ref	Km.	Ref	Ms	Ref	Mb	Ref	Md	Ref	MI	Ref	Mw	Ref
501	20	2	2010	0	11	23.9	37.35	36.31	R	5	R					2.6	R				
502	20	2	2010	0	41	13.2	38.69	40.27	R	10	R					3.1	R				
503	20	2	2010	0	50	10.0	38.63	40.20	R	5	R					3.2	R				
504	20	2	2010	4	59	7.5	40.82	27.92	R	11	R					2.6	R				
505	20	2	2010	9	38	27.1	39.52	41.25	R	5	R					2.6	R				
506	20	2	2010	9	40	25.5	38.71	40.07	R	7	R					2.8	R				
507	20	2	2010	14	34	39.1	40.35	27.82	R	5	R					2.7	R				
508	20	2	2010	14	49	15.7	40.25	39.24	R	5	R					2.8	R				
509	20	2	2010	15	23	36.1	39.33	38.50	R	13	R					2.7	R				
510	20	2	2010	15	56	35.2	39.31	38.46	R	15	R					2.6	R				
511	20	2	2010	16	35	14.6	38.63	39.61	R	10	R					2.8	R				
512	20	2	2010	22	9	52.1	39.83	41.69	R	5	R					3.3	R				
513	20	2	2010	23	8	38.2	39.69	41.65	R	16	R					2.8	R				
514	20	2	2010	23	48	21.5	34.55	33.05	R	12	R							3.4	R		
515	20	2	2010	23	49	7.1	39.77	38.91	R	12	R					3.0	R				
516	21	2	2010	2	2	31.7	37.43	30.79	R	5	R					2.7	R				
517	21	2	2010	2	22	43.1	35.97	30.00	R	11	R					3.5	R	3.5	R		
518	21	2	2010	2	34	37.6	39.46	33.03	R	5	R					3.4	R				
519	21	2	2010	2	45	23.2	37.05	28.48	R	8	R					2.7	R				
520	21	2	2010	2	45	56.0	38.43	44.06	R	5	R					3.1	R				

TÜRKİYE DEPREM ETKİNLİĞİ (2010 YILI ŞUBAT AYI)

No	Tarih - Date			Zaman - Time			Koordinat - Coordinate			Derinlik - Depth		Magnitüd - Magnitude										
	Gün	Ay	Yıl	Saat	Dak.	San.	Enlem-K	Boylam-D	Ref	Km.	Ref	Ms	Ref	Mb	Ref	Md	Ref	MI	Ref	Mw	Ref	
521	21	2	2010	4	13	35.0	39.19	41.62	R	15	R					2.8	R					
522	21	2	2010	4	38	35.1	38.72	40.10	R	5	R							4.3	R			
523	21	2	2010	5	44	24.3	38.81	40.06	R	8	R					3.0	R					
524	21	2	2010	5	53	18.8	38.75	40.11	R	5	R					3.0	R					
525	21	2	2010	7	2	0.1	39.30	42.72	R	5	R							3.8	R			
526	21	2	2010	7	11	23.6	38.75	40.10	R	5	R					3.2	R					
527	21	2	2010	7	47	58.2	39.28	42.71	R	5	R					2.6	R					
528	21	2	2010	8	47	48.2	42.20	41.48	R	20	R							3.8	R			
529	21	2	2010	10	45	49.7	38.63	43.19	R	18	R					2.7	R					
530	21	2	2010	11	55	58.3	38.74	40.11	R	7	R					2.8	R					
531	21	2	2010	13	50	8.6	39.35	38.49	R	15	R					2.8	R					
532	21	2	2010	14	33	8.0	39.68	39.05	R	26	R					2.6	R					
533	21	2	2010	15	37	58.2	39.27	42.73	R	8	R					3.1	R					
534	21	2	2010	15	57	6.9	40.01	39.94	R	11	R					2.8	R					
535	21	2	2010	17	4	52.6	39.73	42.65	R	5	R							3.7	R			
536	21	2	2010	17	7	3.3	39.77	25.71	R	7	R					3.0	R					
537	21	2	2010	18	40	16.5	38.97	32.40	R	32	R					2.9	R					
538	21	2	2010	18	55	22.9	39.38	42.57	R	14	R					2.8	R					
539	21	2	2010	20	54	24.7	39.45	33.02	R	2	R					3.4	R					
540	21	2	2010	21	29	14.3	40.83	35.99	R	10	R					2.8	R					

TÜRKİYE DEPREM ETKİNLİĞİ (2010 YILI ŞUBAT AYI)

No	Tarih - Date			Zaman - Time			Koordinat - Coordinate			Derinlik - Depth		Magnitüd - Magnitude									
	Gün	Ay	Yıl	Saat	Dak.	San.	Enlem-K	Boylam-D	Ref	Km.	Ref	Ms	Ref	Mb	Ref	Md	Ref	MI	Ref	Mw	Ref
541	21	2	2010	22	1	36.5	39.52	26.81	R	8	R					2.8	R				
542	21	2	2010	23	0	13.2	38.74	40.07	R	6	R					3.3	R				
543	21	2	2010	23	50	29.1	39.38	28.16	R	5	R					2.9	R				
544	22	2	2010	0	42	38.2	40.09	38.81	R	10	R					2.9	R				
545	22	2	2010	1	30	42.6	41.08	33.50	R	8	R					2.8	R				
546	22	2	2010	1	52	3.8	39.47	33.12	R	3	R					2.8	R				
547	22	2	2010	2	0	39.5	38.14	26.69	R	6	R					2.8	R				
548	22	2	2010	3	44	4.1	39.04	30.24	R	5	R					2.6	R				
549	22	2	2010	3	46	34.3	37.64	26.88	R	5	R							3.5	R		
550	22	2	2010	3	57	18.6	38.22	25.98	R	7	R					2.9	R				
551	22	2	2010	5	0	25.7	37.91	35.10	R	4	R					3.3	R				
552	22	2	2010	5	19	39.7	39.91	40.57	R	8	R					2.9	R				
553	22	2	2010	7	16	53.6	39.17	26.49	R	9	R					3.2	R				
554	22	2	2010	7	51	0.4	39.67	44.36	R	5	R					2.9	R				
555	22	2	2010	9	14	52.7	39.31	40.77	R	8	R					2.9	R				
556	22	2	2010	9	46	19.5	39.91	40.78	R	20	R					2.7	R				
557	22	2	2010	10	48	50.2	37.92	35.14	R	5	R					3.0	R				
558	22	2	2010	11	12	49.9	39.77	41.34	R	5	R					2.9	R				
559	22	2	2010	11	21	57.0	39.59	30.73	R	3	R					2.7	R				
560	22	2	2010	11	41	34.9	37.02	30.15	R	13	R					2.9	R				

TÜRKİYE DEPREM ETKİNLİĞİ (2010 YILI ŞUBAT AYI)

No	Tarih - Date			Zaman - Time			Koordinat - Coordinate			Derinlik - Depth		Magnitüd - Magnitude									
	Gün	Ay	Yıl	Saat	Dak.	San.	Enlem-K	Boylam-D	Ref	Km.	Ref	Ms	Ref	Mb	Ref	Md	Ref	MI	Ref	Mw	Ref
561	22	2	2010	11	59	11.5	41.70	27.49	R	5	R					2.3	R				
562	22	2	2010	12	7	47.4	39.47	33.05	R	5	R					2.8	R				
563	22	2	2010	12	59	15.4	36.23	30.53	R	27	R					3.2	R				
564	22	2	2010	13	15	21.2	39.28	27.91	R	10	R					2.9	R				
565	22	2	2010	13	28	42.4	37.90	37.66	R	7	R					2.6	R				
566	22	2	2010	13	35	40.3	37.51	35.96	R	22	R					2.2	R				
567	22	2	2010	14	58	19.1	34.36	32.82	R	37	R							3.1	R		
568	22	2	2010	17	3	35.7	38.83	26.36	R	14	R					2.7	R				
569	22	2	2010	17	43	52.5	39.15	29.36	R	6	R					2.4	R				
570	22	2	2010	17	57	17.6	40.24	27.97	R	7	R					2.9	R				
571	22	2	2010	18	31	47.7	38.36	26.91	R	18	R					2.9	R				
572	22	2	2010	19	51	23.8	38.80	26.49	R	9	R					3.0	R				
573	22	2	2010	23	24	40.0	40.00	39.95	R	6	R					2.4	R				
574	22	2	2010	23	35	37.9	40.30	27.41	R	7	R					3.1	R				
575	22	2	2010	23	54	24.7	39.27	29.23	R	27	R					2.6	R				
576	23	2	2010	1	26	36.7	36.87	31.30	R	118	R					3.5	R				
577	23	2	2010	1	56	20.9	40.66	27.49	R	8	R					2.4	R				
578	23	2	2010	2	6	12.6	36.44	28.68	R	8	R					2.4	R				
579	23	2	2010	2	36	53.8	36.44	28.51	R	66	R							3.5	R		
580	23	2	2010	3	51	19.4	36.30	26.63	R	100	R					3.4	R				

TÜRKİYE DEPREM ETKİNLİĞİ (2010 YILI ŞUBAT AYI)

No	Tarih - Date			Zaman - Time			Koordinat - Coordinate			Derinlik - Depth		Magnitüd - Magnitude									
	Gün	Ay	Yıl	Saat	Dak.	San.	Enlem-K	Boylam-D	Ref	Km.	Ref	Ms	Ref	Mb	Ref	Md	Ref	MI	Ref	Mw	Ref
581	23	2	2010	4	47	47.7	36.93	29.34	R	7	R					3.0	R				
582	23	2	2010	5	3	5.4	35.19	32.43	R	8	R					3.5	R				
583	23	2	2010	7	49	55.3	38.68	30.53	R	2	R							1.8	R		
584	23	2	2010	7	58	24.6	39.87	43.11	R	28	R					2.9	R				
585	23	2	2010	8	36	17.7	37.83	26.43	R	8	R					2.8	R				
586	23	2	2010	10	14	56.2	38.23	38.64	R	15	R					2.6	R				
587	23	2	2010	10	16	36.7	37.22	27.86	R	3	R					2.6	R				
588	23	2	2010	10	54	25.5	38.29	38.83	R	6	R					2.6	R				
589	23	2	2010	12	24	53.2	36.20	41.66	R	5	R					3.4	R				
590	23	2	2010	12	36	10.2	39.71	29.25	R	7	R					2.4	R				
591	23	2	2010	13	51	47.4	40.09	28.66	R	8	R					2.9	R				
592	23	2	2010	14	2	20.2	40.03	29.56	R	8	R					2.4	R				
593	23	2	2010	14	11	16.2	41.49	35.97	R	8	R					2.5	R				
594	23	2	2010	15	7	57.1	39.97	32.39	R	9	R					2.3	R				
595	23	2	2010	15	17	19.4	34.96	32.32	R	3	R					3.1	R				
596	23	2	2010	15	33	39.5	39.48	29.12	R	31	R					2.4	R				
597	23	2	2010	15	39	8.5	34.25	26.44	R	63	R							3.8	R		
598	23	2	2010	16	14	31.4	38.99	28.09	R	9	R					2.6	R				
599	23	2	2010	17	2	22.0	39.76	26.03	R	7	R					2.8	R				
600	23	2	2010	17	54	12.8	40.92	31.45	R	5	R					2.7	R				

TÜRKİYE DEPREM ETKİNLİĞİ (2010 YILI ŞUBAT AYI)

No	Tarih - Date			Zaman - Time			Koordinat - Coordinate			Derinlik - Depth		Magnitüd - Magnitude									
	Gün	Ay	Yıl	Saat	Dak.	San.	Enlem-K	Boylam-D	Ref	Km.	Ref	Ms	Ref	Mb	Ref	Md	Ref	MI	Ref	Mw	Ref
601	23	2	2010	17	55	5.7	38.34	30.37	R	13	R					2.8	R				
602	23	2	2010	22	26	33.3	38.56	39.43	R	7	R					3.0	R				
603	23	2	2010	22	39	3.5	40.58	34.52	R	11	R					3.0	R				
604	23	2	2010	23	12	34.3	40.71	28.72	R	9	R					2.2	R				
605	24	2	2010	0	6	13.0	36.37	31.70	R	17	R					3.0	R				
606	24	2	2010	0	27	12.8	40.85	35.94	R	5	R					3.2	R				
607	24	2	2010	2	46	35.9	38.68	28.88	R	10	R					2.6	R				
608	24	2	2010	2	48	24.4	38.69	28.92	R	6	R					2.4	R				
609	24	2	2010	2	56	36.7	38.31	26.57	R	5	R					3.1	R				
610	24	2	2010	4	36	37.4	35.95	35.87	R	10	R					3.3	R				
611	24	2	2010	4	42	54.8	37.15	26.55	R	16	R					2.9	R				
612	24	2	2010	5	8	25.7	38.32	30.82	R	19	R					2.4	R				
613	24	2	2010	5	52	59.4	40.57	34.47	R	9	R					3.0	R				
614	24	2	2010	6	28	26.4	39.37	33.12	R	6	R					2.7	R				
615	24	2	2010	6	33	13.3	37.22	28.76	R	6	R					2.8	R				
616	24	2	2010	6	58	44.2	39.82	26.07	R	11	R					2.9	R				
617	24	2	2010	7	28	52.0	39.29	27.68	R	9	R					2.8	R				
618	24	2	2010	7	43	46.2	37.27	28.19	R	5	R					2.6	R				
619	24	2	2010	9	7	43.0	40.85	30.35	R	19	R					2.6	R				
620	24	2	2010	9	57	12.2	39.29	38.43	R	13	R					2.9	R				

TÜRKİYE DEPREM ETKİNLİĞİ (2010 YILI ŞUBAT AYI)

No	Tarih - Date			Zaman - Time			Koordinat - Coordinate			Derinlik - Depth		Magnitüd - Magnitude									
	Gün	Ay	Yıl	Saat	Dak.	San.	Enlem-K	Boylam-D	Ref	Km.	Ref	Ms	Ref	Mb	Ref	Md	Ref	MI	Ref	Mw	Ref
621	24	2	2010	10	38	21.6	39.08	27.49	R	8	R					2.8	R				
622	24	2	2010	11	44	4.5	38.72	39.38	R	18	R					2.7	R				
623	24	2	2010	13	0	49.5	40.53	29.58	R	11	R					2.0	R				
624	24	2	2010	13	10	12.2	37.65	35.38	R	6	R					2.6	R				
625	24	2	2010	13	17	28.0	39.36	38.50	R	17	R					2.8	R				
626	24	2	2010	13	18	18.8	40.43	29.97	R	18	R					2.6	R				
627	24	2	2010	13	25	38.7	40.85	27.90	R	4	R					2.6	R				
628	24	2	2010	13	26	14.2	38.47	29.72	R	9	R					2.6	R				
629	24	2	2010	13	55	19.9	41.34	35.80	R	8	R					3.0	R				
630	24	2	2010	14	2	34.8	40.05	25.50	R	13	R					2.9	R				
631	24	2	2010	14	11	0.8	39.92	29.81	R	13	R					2.8	R				
632	24	2	2010	14	21	43.3	36.79	29.33	R	10	R					2.6	R				
633	24	2	2010	14	25	38.3	40.77	34.94	R	8	R					2.7	R				
634	24	2	2010	14	41	19.1	39.43	38.53	R	23	R					2.9	R				
635	24	2	2010	14	58	10.6	39.31	38.59	R	18	R					3.0	R				
636	24	2	2010	16	36	8.5	39.34	25.85	R	9	R					2.8	R				
637	24	2	2010	16	53	19.2	41.55	45.06	R	2	R					3.0	R				
638	24	2	2010	18	56	52.5	38.60	30.31	R	5	R					3.0	R				
639	24	2	2010	20	17	26.6	38.60	30.32	R	5	R					3.0	R				
640	24	2	2010	21	0	16.9	38.58	30.34	R	3	R					3.0	R				

TÜRKİYE DEPREM ETKİNLİĞİ (2010 YILI ŞUBAT AYI)

No	Tarih - Date			Zaman - Time			Koordinat - Coordinate			Derinlik - Depth		Magnitüd - Magnitude									
	Gün	Ay	Yıl	Saat	Dak.	San.	Enlem-K	Boylam-D	Ref	Km.	Ref	Ms	Ref	Mb	Ref	Md	Ref	MI	Ref	Mw	Ref
641	24	2	2010	22	1	47.6	39.39	24.89	R	5	R					3.1	R				
642	24	2	2010	22	1	56.5	37.63	29.45	R	12	R					2.3	R				
643	24	2	2010	22	51	16.3	41.29	33.44	R	6	R					2.7	R				
644	24	2	2010	22	59	1.4	38.08	38.03	R	5	R					2.2	R				
645	25	2	2010	0	27	58.4	37.08	28.57	R	9	R					3.3	R				
646	25	2	2010	0	52	26.1	37.17	28.68	R	4	R					2.4	R				
647	25	2	2010	1	18	48.8	39.13	26.48	R	15	R					3.0	R				
648	25	2	2010	2	54	35.2	40.45	42.32	R	6	R					2.7	R				
649	25	2	2010	3	51	53.6	34.63	33.32	R	14	R					3.1	R				
650	25	2	2010	4	8	57.8	40.71	27.49	R	13	R					2.5	R				
651	25	2	2010	4	38	17.6	37.05	35.98	R	2	R					2.4	R				
652	25	2	2010	5	11	35.8	38.30	27.30	R	6	R					2.5	R				
653	25	2	2010	5	25	24.6	39.71	41.49	R	29	R					2.9	R				
654	25	2	2010	5	28	25.9	40.15	27.00	R	7	R					2.4	R				
655	25	2	2010	6	24	1.6	38.83	40.36	R	13	R					2.4	R				
656	25	2	2010	6	52	20.1	39.57	29.11	R	9	R					2.8	R				
657	25	2	2010	7	5	20.6	38.98	26.49	R	5	R					3.0	R				
658	25	2	2010	7	42	48.0	39.13	40.52	R	5	R					2.6	R				
659	25	2	2010	8	7	19.3	38.95	26.37	R	6	R					3.1	R				
660	25	2	2010	10	6	24.8	39.94	39.27	R	8	R							3.7	R		

TÜRKİYE DEPREM ETKİNLİĞİ (2010 YILI ŞUBAT AYI)

No	Tarih - Date			Zaman - Time			Koordinat - Coordinate			Derinlik - Depth		Magnitüd - Magnitude									
	Gün	Ay	Yıl	Saat	Dak.	San.	Enlem-K	Boylam-D	Ref	Km.	Ref	Ms	Ref	Mb	Ref	Md	Ref	MI	Ref	Mw	Ref
661	25	2	2010	10	38	19.8	37.59	35.35	R	5	R					2.6	R				
662	25	2	2010	12	26	21.3	40.55	27.05	R	6	R					2.1	R				
663	25	2	2010	14	10	8.5	38.48	29.64	R	8	R					2.5	R				
664	25	2	2010	14	21	32.5	38.02	38.12	R	18	R					2.6	R				
665	25	2	2010	14	41	29.6	39.42	28.99	R	16	R					2.5	R				
666	25	2	2010	14	50	30.9	37.08	28.57	R	9	R					3.7	R				
667	25	2	2010	15	45	43.3	39.57	30.16	R	15	R					2.8	R				
668	25	2	2010	17	15	31.0	37.18	28.27	R	12	R					2.3	R				
669	25	2	2010	18	54	36.3	39.34	29.11	R	22	R					2.2	R				
670	25	2	2010	19	46	16.5	37.78	26.96	R	9	R					2.6	R				
671	25	2	2010	19	50	45.2	40.12	27.30	R	17	R					2.4	R				
672	25	2	2010	20	49	54.2	37.83	38.51	R	5	R					2.3	R				
673	25	2	2010	21	46	24.3	38.65	30.82	R	14	R					2.6	R				
674	25	2	2010	22	0	1.7	39.95	33.19	R	6	R					2.9	R				
675	25	2	2010	23	48	26.5	40.21	25.24	R	18	R					2.7	R				
676	26	2	2010	0	23	31.3	40.00	25.46	R	27	R					2.8	R				
677	26	2	2010	0	23	50.4	38.93	29.93	R	8	R					2.6	R				
678	26	2	2010	0	39	55.3	38.63	25.88	R	2	R					2.7	R				
679	26	2	2010	4	5	59.6	37.79	30.05	R	6	R					2.7	R				
680	26	2	2010	5	0	48.7	37.95	42.11	R	22	R					2.7	R				

TÜRKİYE DEPREM ETKİNLİĞİ (2010 YILI ŞUBAT AYI)

No	Tarih - Date			Zaman - Time			Koordinat - Coordinate			Derinlik - Depth		Magnitüd - Magnitude									
	Gün	Ay	Yıl	Saat	Dak.	San.	Enlem-K	Boylam-D	Ref	Km.	Ref	Ms	Ref	Mb	Ref	Md	Ref	MI	Ref	Mw	Ref
681	26	2	2010	7	21	49.9	39.80	37.63	R	18	R					2.9	R				
682	26	2	2010	8	21	42.4	36.96	29.30	R	14	R					2.6	R				
683	26	2	2010	8	24	28.1	37.95	35.63	R	5	R					2.6	R				
684	26	2	2010	9	4	38.0	40.81	31.53	R	6	R					2.9	R				
685	26	2	2010	10	14	2.4	40.89	31.22	R	24	R					2.8	R				
686	26	2	2010	10	14	2.4	40.89	31.22	R	24	R					2.8	R				
687	26	2	2010	10	27	2.6	36.83	36.99	R	34	R					3.3	R				
688	26	2	2010	10	35	23.2	39.16	40.38	R	2	R					2.9	R				
689	26	2	2010	10	48	5.8	37.17	40.11	R	4	R					2.8	R				
690	26	2	2010	10	54	27.9	38.84	32.54	R	22	R					2.8	R				
691	26	2	2010	10	55	54.5	40.73	27.40	R	17	R					2.7	R				
692	26	2	2010	11	37	0.6	38.52	25.24	R	35	R					3.4	R				
693	26	2	2010	11	50	50.4	40.77	27.45	R	11	R					2.5	R				
694	26	2	2010	12	18	43.2	37.08	30.01	R	14	R					2.8	R				
695	26	2	2010	12	38	13.2	36.84	29.30	R	5	R					2.3	R				
696	26	2	2010	12	45	43.3	39.49	30.07	R	10	R					2.5	R				
697	26	2	2010	12	54	16.1	40.43	37.63	R	3	R					2.9	R				
698	26	2	2010	13	14	5.9	39.18	26.32	R	9	R					2.4	R				
699	26	2	2010	13	18	51.5	37.36	42.41	R	3	R					2.8	R				
700	26	2	2010	14	9	40.0	38.83	35.80	R	6	R					3.0	R				

TÜRKİYE DEPREM ETKİNLİĞİ (2010 YILI ŞUBAT AYI)

No	Tarih - Date			Zaman - Time			Koordinat - Coordinate			Derinlik - Depth		Magnitüd - Magnitude									
	Gün	Ay	Yıl	Saat	Dak.	San.	Enlem-K	Boylam-D	Ref	Km.	Ref	Ms	Ref	Mb	Ref	Md	Ref	MI	Ref	Mw	Ref
701	26	2	2010	14	16	5.9	39.42	24.81	R	5	R					3.1	R				
702	26	2	2010	14	19	4.2	37.27	27.86	R	5	R					2.7	R				
703	26	2	2010	14	41	39.9	39.41	40.39	R	5	R					3.3	R				
704	26	2	2010	15	9	6.2	38.70	35.35	R	10	R					2.7	R				
705	26	2	2010	15	20	45.4	39.33	32.01	R	5	R					2.9	R				
706	26	2	2010	15	35	55.1	40.50	27.53	R	5	R					2.0	R				
707	26	2	2010	16	0	13.4	40.88	31.41	R	13	R					2.6	R				
708	26	2	2010	17	3	7.0	36.61	29.90	R	31	R					3.0	R				
709	26	2	2010	17	43	15.3	39.46	40.12	R	5	R					2.8	R				
710	26	2	2010	18	5	3.8	37.39	30.84	R	9	R					3.0	R				
711	26	2	2010	19	10	10.8	37.03	28.02	R	5	R					2.9	R				
712	26	2	2010	19	22	55.2	36.97	29.34	R	12	R					2.9	R				
713	26	2	2010	19	31	17.5	39.59	26.61	R	2	R					2.6	R				
714	26	2	2010	19	58	21.7	40.61	27.30	R	13	R							1.5	R		
715	26	2	2010	20	9	22.9	39.85	33.09	R	9	R					2.6	R				
716	26	2	2010	21	2	13.3	38.74	30.76	R	9	R					2.6	R				
717	26	2	2010	22	42	4.2	39.23	24.76	R	24	R					3.1	R				
718	26	2	2010	23	3	57.7	38.01	38.24	R	7	R					3.1	R				
719	26	2	2010	23	6	2.0	40.76	29.21	R	8	R					2.8	R				
720	26	2	2010	23	21	34.1	40.59	28.96	R	5	R					2.2	R				

TÜRKİYE DEPREM ETKİNLİĞİ (2010 YILI ŞUBAT AYI)

No	Tarih - Date			Zaman - Time			Koordinat - Coordinate			Derinlik - Depth		Magnitüd - Magnitude									
	Gün	Ay	Yıl	Saat	Dak.	San.	Enlem-K	Boylam-D	Ref	Km.	Ref	Ms	Ref	Mb	Ref	Md	Ref	MI	Ref	Mw	Ref
721	27	2	2010	0	36	41.6	39.03	26.97	R	7	R					2.7	R				
722	27	2	2010	0	49	34.5	37.49	35.59	R	8	R					2.6	R				
723	27	2	2010	0	52	46.8	37.24	29.19	R	7	R					2.9	R				
724	27	2	2010	1	9	52.4	36.98	29.31	R	9	R					2.7	R				
725	27	2	2010	1	16	58.0	36.34	28.92	R	17	R					2.6	R				
726	27	2	2010	1	33	26.9	37.35	30.79	R	5	R					3.2	R				
727	27	2	2010	1	57	34.3	37.38	30.80	R	8	R					2.9	R				
728	27	2	2010	2	15	3.9	39.60	44.53	R	5	R					2.9	R				
729	27	2	2010	2	30	5.4	37.43	30.54	R	23	R					2.6	R				
730	27	2	2010	3	20	16.0	39.74	42.01	R	15	R					2.8	R				
731	27	2	2010	4	30	3.8	39.25	29.46	R	9	R					2.6	R				
732	27	2	2010	5	50	33.8	37.26	28.13	R	6	R					2.6	R				
733	27	2	2010	7	31	15.3	36.91	29.36	R	5	R					2.3	R				
734	27	2	2010	8	53	15.1	40.30	38.08	R	10	R					3.2	R				
735	27	2	2010	9	36	36.3	36.84	39.28	R	5	R					2.8	R				
736	27	2	2010	9	53	53.4	37.18	28.16	R	3	R					2.7	R				
737	27	2	2010	10	18	32.7	40.17	38.99	R	19	R					2.7	R				
738	27	2	2010	10	36	10.6	38.13	32.63	R	29	R					2.3	R				
739	27	2	2010	11	21	9.7	41.04	34.67	R	5	R					2.6	R				
740	27	2	2010	12	0	3.4	37.35	28.23	R	5	R					2.7	R				

TÜRKİYE DEPREM ETKİNLİĞİ (2010 YILI ŞUBAT AYI)

No	Tarih - Date			Zaman - Time			Koordinat - Coordinate			Derinlik - Depth		Magnitüd - Magnitude									
	Gün	Ay	Yıl	Saat	Dak.	San.	Enlem-K	Boylam-D	Ref	Km.	Ref	Ms	Ref	Mb	Ref	Md	Ref	MI	Ref	Mw	Ref
741	27	2	2010	14	9	29.5	39.41	25.84	R	5	R					3.0	R				
742	27	2	2010	15	3	23.5	40.33	27.86	R	6	R					2.8	R				
743	27	2	2010	15	47	11.9	37.25	39.51	R	9	R					2.9	R				
744	27	2	2010	16	13	3.8	40.10	32.45	R	16	R					2.7	R				
745	27	2	2010	19	1	36.4	37.46	38.62	R	7	R					3.0	R				
746	27	2	2010	19	12	15.5	39.75	27.19	R	5	R					3.0	R				
747	27	2	2010	19	34	37.4	37.06	31.11	R	89	R							3.2	R		
748	27	2	2010	19	39	44.2	36.95	28.41	R	22	R					2.9	R				
749	27	2	2010	20	42	27.5	37.85	32.63	R	6	R					2.2	R				
750	27	2	2010	21	3	48.9	37.55	43.50	R	2	R					2.5	R				
751	27	2	2010	21	18	20.7	40.07	41.01	R	5	R					2.7	R				
752	27	2	2010	22	13	23.8	37.59	43.59	R	5	R					3.0	R				
753	27	2	2010	23	56	19.5	37.32	26.94	R	5	R					3.0	R				
754	28	2	2010	0	16	52.8	37.89	32.64	R	12	R					2.3	R				
755	28	2	2010	1	21	3.8	39.41	40.44	R	5	R					3.0	R				
756	28	2	2010	1	22	13.8	39.41	40.41	R	5	R					3.4	R				
757	28	2	2010	2	22	3.3	39.44	40.44	R	5	R					3.1	R				
758	28	2	2010	2	22	50.3	34.06	25.43	N	36	N			4.6	N						
759	28	2	2010	2	23	48.2	39.38	33.06	R	3	R					2.8	R				
760	28	2	2010	2	59	17.5	40.37	27.42	R	6	R					2.9	R				

TÜRKİYE DEPREM ETKİNLİĞİ (2010 YILI ŞUBAT AYI)

No	Tarih - Date			Zaman - Time			Koordinat - Coordinate			Derinlik - Depth		Magnitüd - Magnitude									
	Gün	Ay	Yıl	Saat	Dak.	San.	Enlem-K	Boylam-D	Ref	Km.	Ref	Ms	Ref	Mb	Ref	Md	Ref	MI	Ref	Mw	Ref
761	28	2	2010	4	21	59.2	41.00	38.96	R	4	R					3.0	R				
762	28	2	2010	6	40	59.2	39.50	32.60	R	6	R					2.1	R				
763	28	2	2010	7	35	37.0	37.57	36.22	R	5	R					2.4	R				
764	28	2	2010	8	19	39.8	38.83	41.37	R	3	R					2.7	R				
765	28	2	2010	9	13	45.2	38.17	30.70	R	13	R					2.8	R				
766	28	2	2010	9	28	50.9	37.61	36.23	R	5	R					2.8	R				
767	28	2	2010	9	53	30.5	37.21	28.13	R	5	R					2.6	R				
768	28	2	2010	10	52	34.6	38.26	38.08	R	5	R					2.5	R				
769	28	2	2010	12	12	11.2	36.85	26.37	R	5	R					2.7	R				
770	28	2	2010	12	50	16.6	40.22	35.20	R	5	R					3.3	R				
771	28	2	2010	13	50	57.4	39.41	40.41	R	5	R					2.8	R				
772	28	2	2010	14	40	9.9	37.25	28.24	R	8	R					2.7	R				
773	28	2	2010	15	12	14.7	39.33	38.47	R	13	R					2.8	R				
774	28	2	2010	17	23	31.7	39.17	43.69	R	5	R					2.8	R				
775	28	2	2010	18	57	15.1	37.67	36.19	R	5	R					2.8	R				
776	28	2	2010	18	58	36.1	39.47	28.93	R	6	R					2.6	R				
777	28	2	2010	19	4	27.5	37.48	36.23	R	20	R					2.9	R				
778	28	2	2010	19	26	53.3	40.83	25.40	R	2	R					3.1	R				
779	28	2	2010	19	43	50.1	40.75	29.03	R	10	R					2.4	R				
780	28	2	2010	19	48	25.8	38.92	38.50	R	5	R					2.7	R				

TÜRKİYE DEPREM ETKİNLİĞİ (2010 YILI ŞUBAT AYI)

No	Tarih - Date			Zaman - Time			Koordinat - Coordinate			Derinlik - Depth		Magnitüd - Magnitude									
	Gün	Ay	Yıl	Saat	Dak.	San.	Enlem-K	Boylam-D	Ref	Km.	Ref	Ms	Ref	Mb	Ref	Md	Ref	MI	Ref	Mw	Ref
781	28	2	2010	20	11	57.2	37.88	43.63	R	5	R					3.0	R				
782	28	2	2010	20	38	26.0	40.60	42.50	R	5	R					3.3	R				
783	28	2	2010	20	44	55.6	39.36	33.17	R	6	R					2.9	R				
784	28	2	2010	21	12	16.1	37.64	36.19	R	4	R					3.1	R				
785	28	2	2010	21	42	14.0	40.48	42.30	R	5	R					3.1	R				
786	28	2	2010	23	14	7.3	37.07	28.58	R	13	R					2.8	R				
787	28	2	2010	23	26	20.6	38.96	40.49	R	4	R					3.0	R				
788	28	2	2010	23	28	29.7	36.69	29.32	R	5	R					2.6	R				