



Kandilli Rasathanesi Ve Deprem Araştırma Enstitüsü

ULUSAL DEPREM İZLEME MERKEZİ



***2010 OCAK AYI
BÜLTENİ***

***YIL: 7 - SAYI: 73
İSTANBUL***

Hazırlayan ve Katkıda Bulunanlar

D. Kalafat

K. Kekovalı

K. Kılıç

Y. Güneş

Z. Öğütcü

M. Kara

M. Yilmazer

M. Suvarıklı

M. Çomođlu

A. Küsmezer

F.Bekler

P. Deniz

A. Berberođlu

M. Berberođlu

S. Poyraz

D.Kepekçi

R.Polat

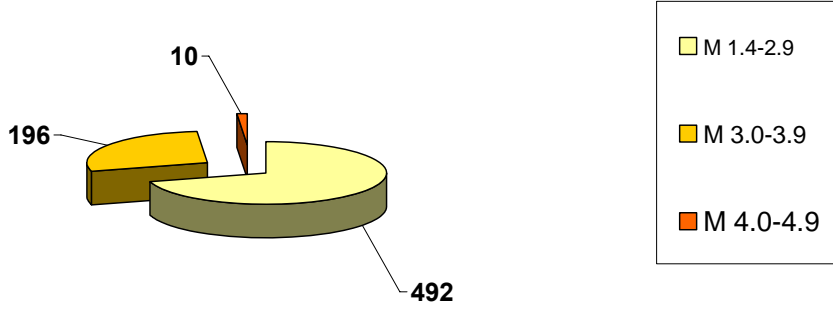
M.F.Akkoyunlu

Ö.Çok

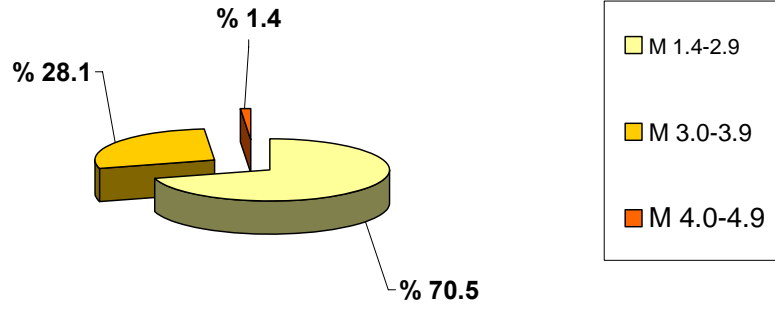
2010 yılı Ocak ayında meydana gelen depremlerin
istatistiksel dağılımı

MAGNİTÜD ARALIĞI	TOPLAM
1.4-2.9	492
3.0-3.9	196
4.0-4.9	10
5.0-5.9	—
6.0-6.9	—
7.0-7.9	—
TOPLAM	698

2010 OCAK AYI DEPREMLERİNİN İSTATİSTİKSEL DAĞILIMI
(Toplam: 698 Adet)



2010 OCAK AYI DEPREMLERİNİN İSTATİSTİKSEL DAĞILIMI (%)



DEĞERLENDİRME

Ocak ayında toplam 698 depremin çözümlü yapılmıştır. Büyüklüğü 4.0 ve üzerinde olan deprem sayısı 10 adettir. Toplam meydana gelen depremlerin % 70.5 oranını büyüklükleri M=1.4-2.9 arasındaki depremler oluşturmaktadır.

100 adet geniş bantlı (Broad Band) istasyonun Ocak ayı içerisindeki çalışma performansları % 80 dir. Bu ay içerisinde 12 adet geniş bantlı (Broad Band) deprem istasyonu verimsiz olmuştur.

22 adet kısa periyotlu (SP) istasyonun Ocak ayı içerisindeki çalışma performansları % 72 olup, Eskişehir (ESKT), Hakkari (HKR) ve Tokat (TOKT) bu ay içindeki verimsiz istasyonlardır.

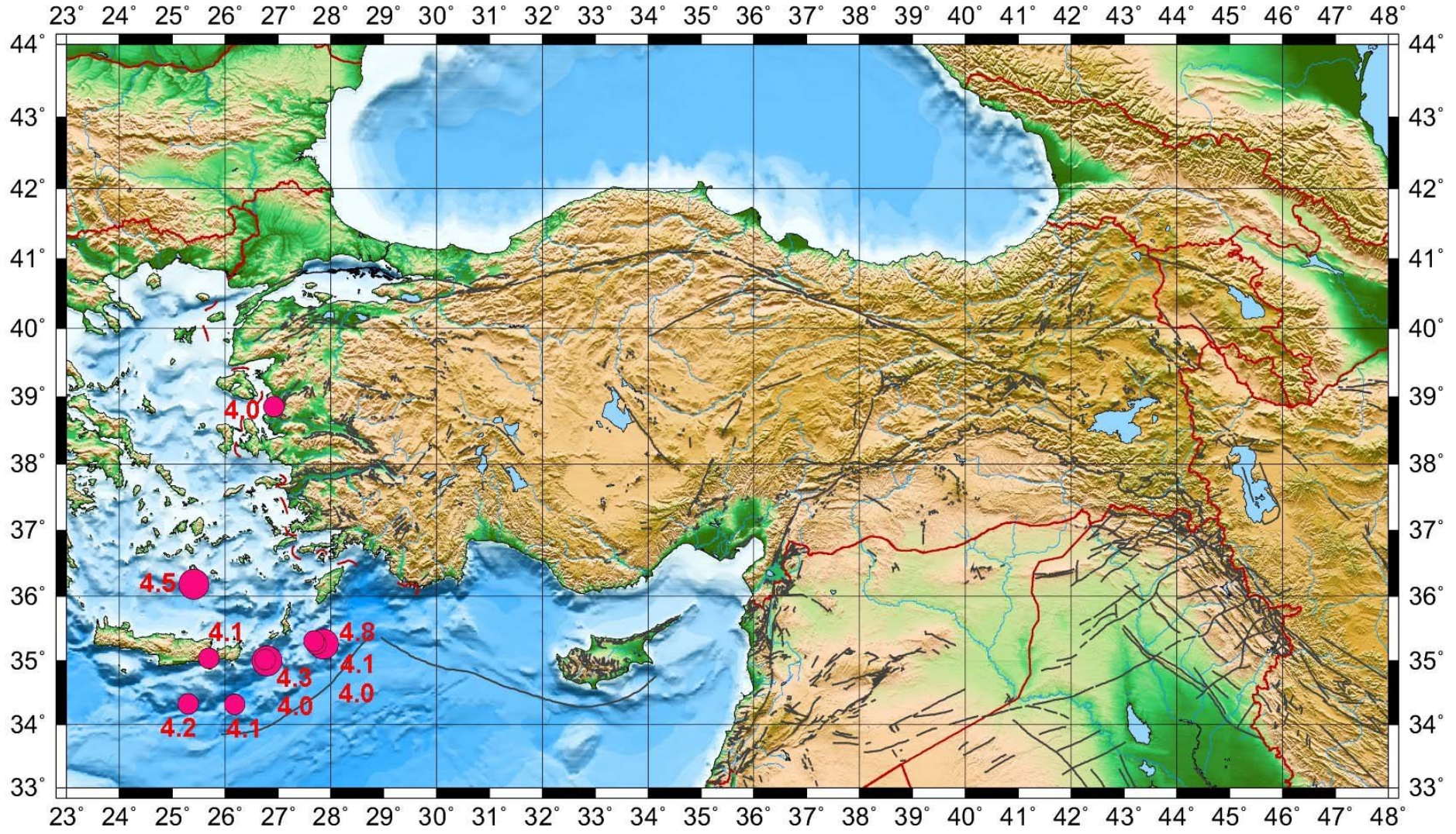
Ocak ayı itibarıyla deprem istasyonlarının ve *sismik ağın ortalama verimlilik performansı % 78* olmuştur.

Ocak ayındaki en önemli depremler;

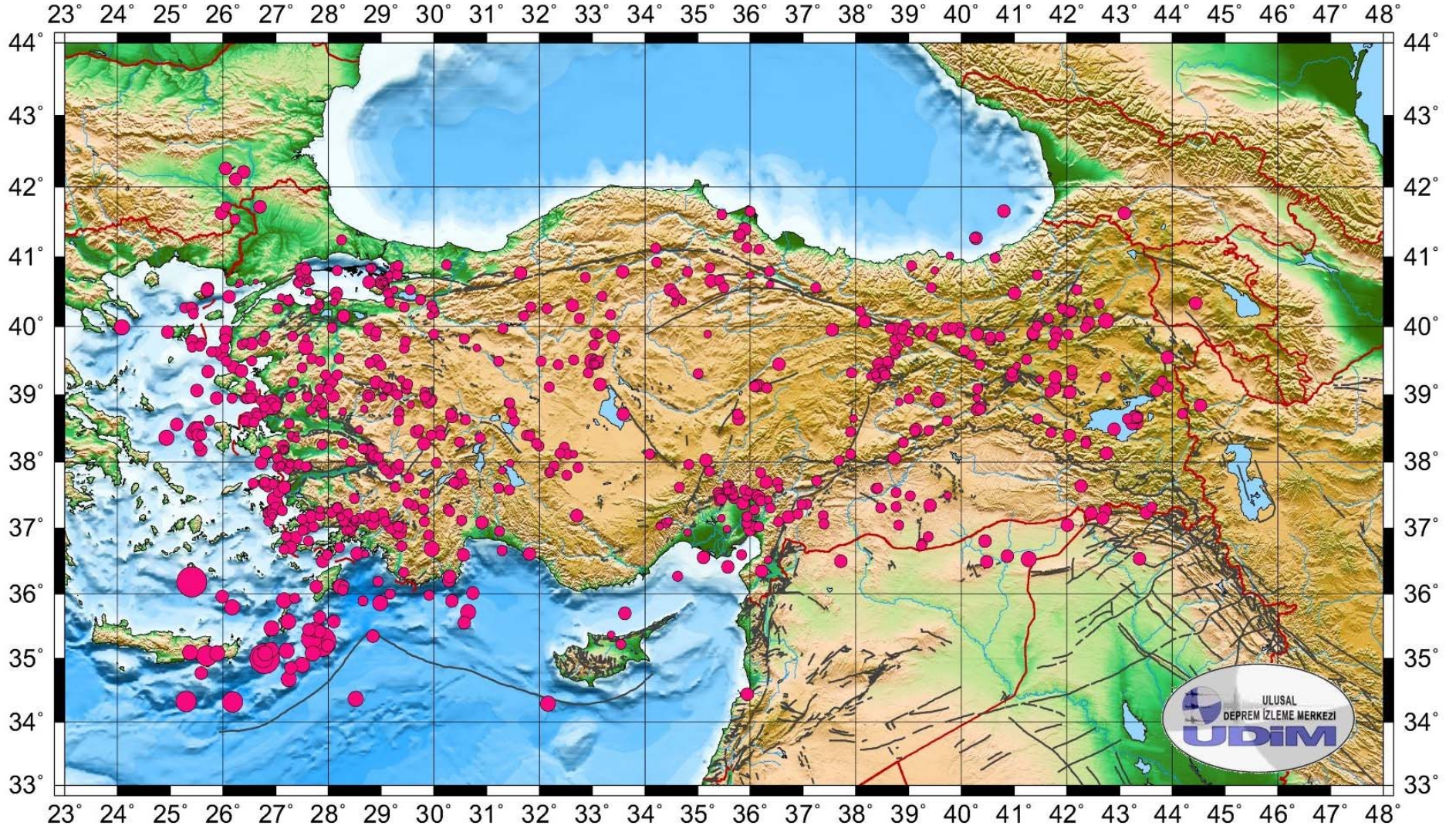
Gün	Ay	Yıl	Saat (GMT)	Enlem (N)	Boylam (E)	Derinlik (Km.)	M (ISK)	Yer
17	1	2010	20:16	35.26	27.86	29	4.8	Akdeniz
5	1	2010	02:47	36.18	25.41	105	4.5	Akdeniz
26	1	2010	13:31	35.00	26.79	10	4.3	Akdeniz
1	1	2010	05:37	34.33	25.30	39	4.2	Akdeniz
15	1	2010	08:28	34.32	26.18	35	4.1	Akdeniz
17	1	2010	20:59	35.26	27.72	60	4.1	Akdeniz
28	1	2010	13:05	35.04	25.69	19	4.1	Akdeniz
7	1	2010	04:08	35.02	26.76	5	4.0	Akdeniz
18	1	2010	14:25	35.31	27.68	51	4.0	Akdeniz
25	1	2010	01:10	38.85	26.92	13	4.0	Çandarlı Körfezi - Ege Denizi

Ayrıca, Tekirdağ açıkları-Marmara Denizi'nde, Çınarcık-Yalova, Aliğa-Bergama-İzmir, Soma-Kırkağaç-Manisa, Oniki Adalar bölgesinde, Gökova Körfezi-Muğla, Girit adası güneyi-Akdeniz, Simav-Kütahya, Honaz-Buldan-Denizli, Bolvadin-Afyon, Afşar-Bala-Ankara, Konya, Kozan-Adana meydana gelen deprem etkinlikleri dikkat çekmektedir. Kemaliye-Erzincan, Bingöl, Van, Doğu Anadolu Fay Zonu boyunca ise Sivrice-Elazığ'da deprem etkinlikleri gözlenmiştir.

TÜRKİYE VE YAKIN ÇEVRESİNDE $M \geq 4.0$ OLAN DEPREMLER (OCAK 2010)



TÜRKİYE VE YAKIN ÇEVRESİ DEPREM ETKİNLİĞİ (OCAK 2010) **Toplam: 698 Adet**



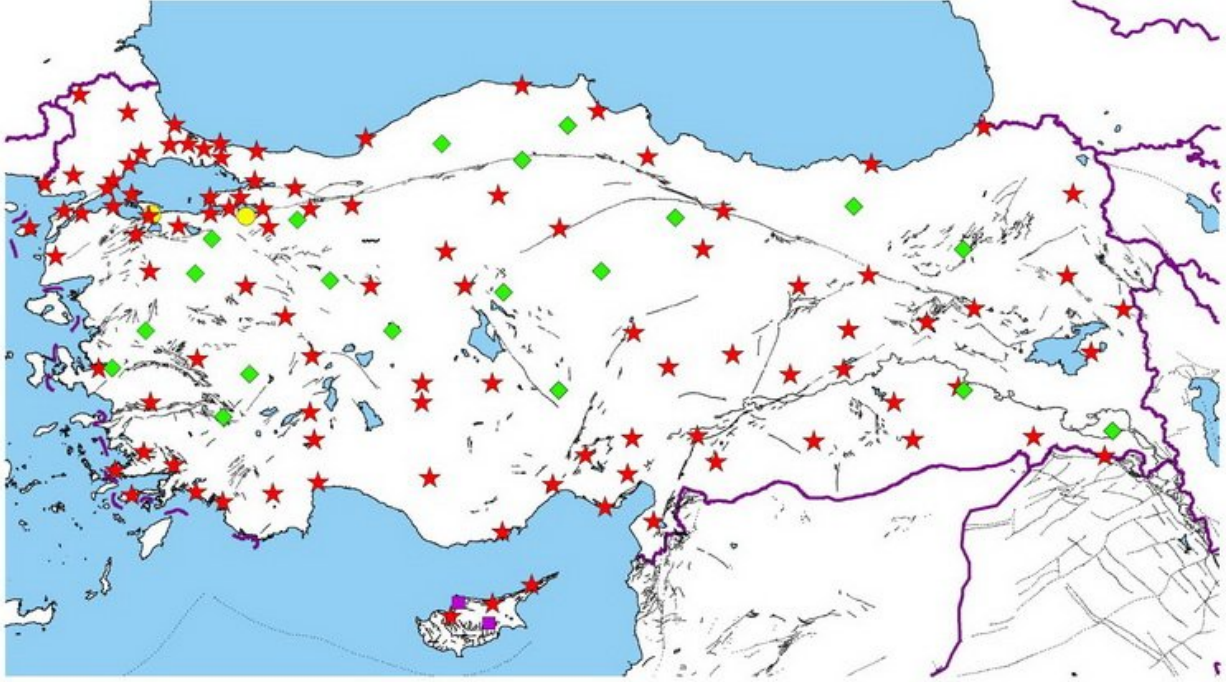
OCAK 2010

İSTASYON VERİMLİLİK

TABLolarI

B.Ü.
KANDİLLİ RASATHANESİ VE DEPREM ARAŞTIRMA ENSTİTÜSÜ
ULUSAL DEPREM İZLEME MERKEZİ
DEPREM İSTASYONLARI

Ocak 2010
Toplam: 124 Adet



★ GENİŞ BAND

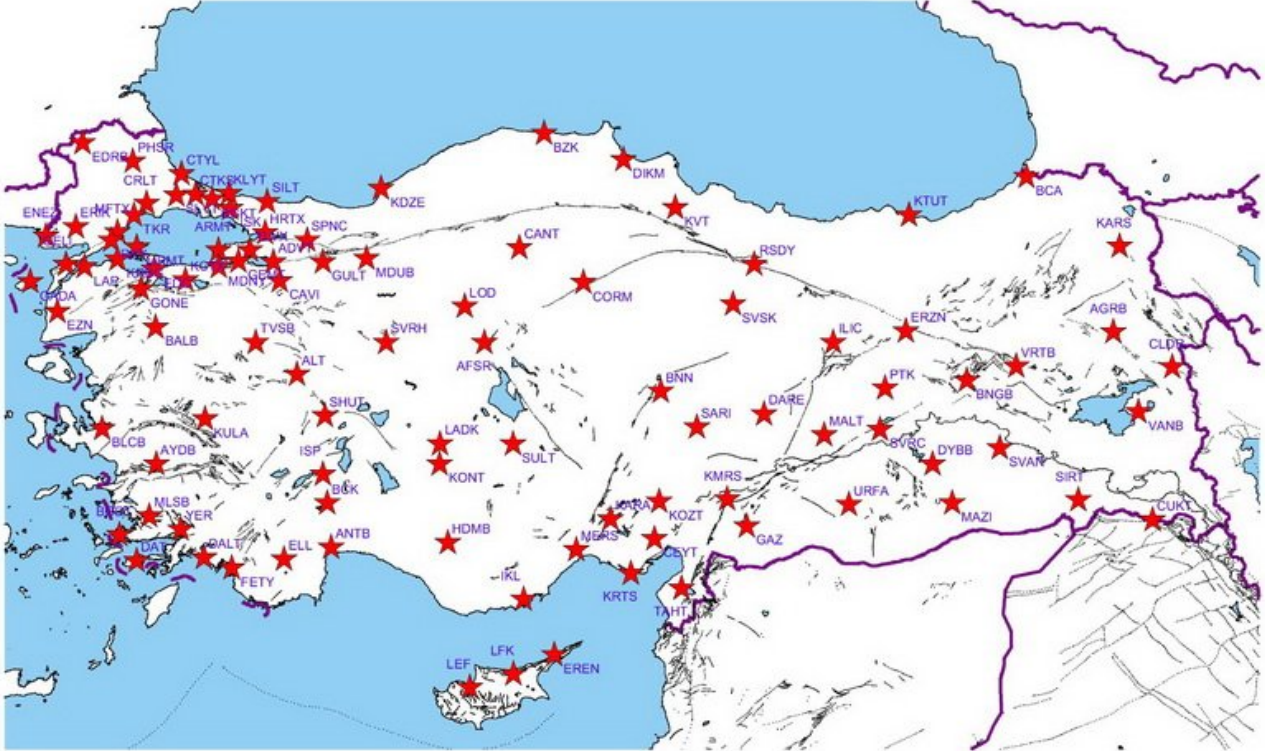
◆ KISA PERİYOT

● TELEMETRİ KISA PERİYOT

■ İVME ÖLÇER

GENİŞ BANTLI (BROADBAND) DEPREM İSTASYONLARI

Ocak 2010
100 Adet



Adet	Yöntem	Kod	(+) adet	(-) adet	TOPLAM GÜN	(+)%	(-)%	(+)%	(-)%
1	1	ADVT	31	0	31	100	0		
2	2	AFSR	31	0	31	100	0		
3	3	AGRB	22	9	31	71	29		
4	4	ALT	22	9	31	71	29		
5	5	ANTB	31	0	31	100	0		
6	6	ARMT	30	1	31	97	3		
7	7	AYDB	31	0	31	100	0		
8	8	BALB	31	0	31	100	0		
9	9	BCA	27	4	31	87	13		
10	10	BCK	31	0	31	100	0		
11	11	BGKT	31	0	31	100	0		
12	12	BLCB	27	4	31	87	13		
13	13	BNGB	22	9	31	71	29		
14	14	BNN	31	0	31	100	0		
15	15	BODT	21	10	31	68	32		
16	16	BZK	29	2	31	94	6		
17	17	CANT	31	0	31	100	0		
18	18	CAVI	31	0	31	100	0		
19	19	CEYT	29	2	31	94	6		
20	20	CLDR	30	1	31	97	3		
21	21	CORM	31	0	31	100	0		
22	22	CRLT	30	1	31	97	3		
23	23	CTKS	30	1	31	97	3		
24	24	CTYL	29	2	31	94	6		
25	25	CUKT	27	4	31	87	13		
26	26	DALY	28	3	31	90	10		
27	27	DARE	28	3	31	90	10		
28	28	DAT	0	31	31	0	100		
29	29	DIKM	31	0	31	100	0		
30	30	DYBB	31	0	31	100	0		
31	31	EDC	31	0	31	100	0		
32	32	EDRB	31	0	31	100	0		
33	33	ELL	31	0	31	100	0		
34	34	ENEZ	30	1	31	97	3		
35	35	EREN	31	0	31	100	0		
36	36	ERIK	31	0	31	100	0		
37	37	ERZN	31	0	31	100	0		
38	38	EZN	31	0	31	100	0		
39	39	FETY	22	9	31	71	29		
40	40	GADA	0	31	31	0	100		
41	41	GAZ	0	31	31	0	100		
42	42	GELI	31	0	31	100	0		
43	43	GEMT	31	0	31	100	0		
44	44	GONE	30	1	31	97	3		
45	45	GULT	5	26	31	16	84		
46	46	HDMB	0	31	31	0	100		
47	47	HRTX	31	0	31	100	0		
48	48	IKL	20	11	31	65	35		
49	49	ILIC	30	1	31	97	3		
50	50	ISK	31	0	31	100	0		
51	51	ISP	27	4	31	87	13		
52	52	KARA	31	0	31	100	0		
53	53	KARS	28	3	31	90	10		
54	54	KCTX	22	9	31	71	29		
55	55	KDZE	24	7	31	77	23		
56	56	KLYT	28	3	31	90	10		
57	57	KMRS	31	0	31	100	0		
58	58	KONT	30	1	31	97	3		
59	59	KOZT	30	1	31	97	3		
60	60	KRBG	31	0	31	100	0		
61	61	KRTS	0	31	31	0	100		
62	62	KTUT	28	3	31	90	10		
63	63	KULA	31	0	31	100	0		
64	64	KVT	30	1	31	97	3		
65	65	LADK	31	0	31	100	0		
66	66	LAP	27	4	31	87	13		
67	67	LEF	31	0	31	100	0		
68	68	LFK	28	3	31	90	10		
69	69	LOD	30	1	31	97	3		
70	70	MALT	3	28	31	10	90		
71	71	MAZI	31	0	31	100	0		
72	72	MDNY	31	0	31	100	0		
73	73	MDUB	31	0	31	100	0		
74	74	MERS	30	1	31	97	3		
75	75	MFTX	0	31	31	0	100		
76	76	MLSB	0	31	31	0	100		
77	77	MRMT	17	14	31	55	45		
78	78	PHRS	30	1	31	97	3		
79	79	PTK	29	2	31	94	6		
80	80	RKY	31	0	31	100	0		
81	81	RSDY	31	0	31	100	0		
82	82	SARI	0	31	31	0	100		
83	83	SHUT	31	0	31	100	0		
84	84	SILT	20	11	31	65	35		
85	85	SIRT	29	2	31	94	6		
86	86	SLVT	31	0	31	100	0		
87	87	SPNC	31	0	31	100	0		
88	88	SULT	31	0	31	100	0		
89	89	SVAN	30	1	31	97	3		
90	90	SVRC	5	26	31	16	84		
91	91	SVRH	31	0	31	100	0		
92	92	SVSK	23	8	31	74	26		
93	93	TAHT	13	18	31	42	58		
94	94	TKR	0	31	31	0	100		
95	95	TVSB	26	5	31	84	16		
96	96	URFA	31	0	31	100	0		
97	97	VANB	0	31	31	0	100		
98	98	VRTB	31	0	31	100	0		
99	99	YER	13	18	31	42	58		
100	100	YLVX	0	31	31	0	100		

GENİŞ BANTLI (BROAD-BAND) İSTASYONLAR

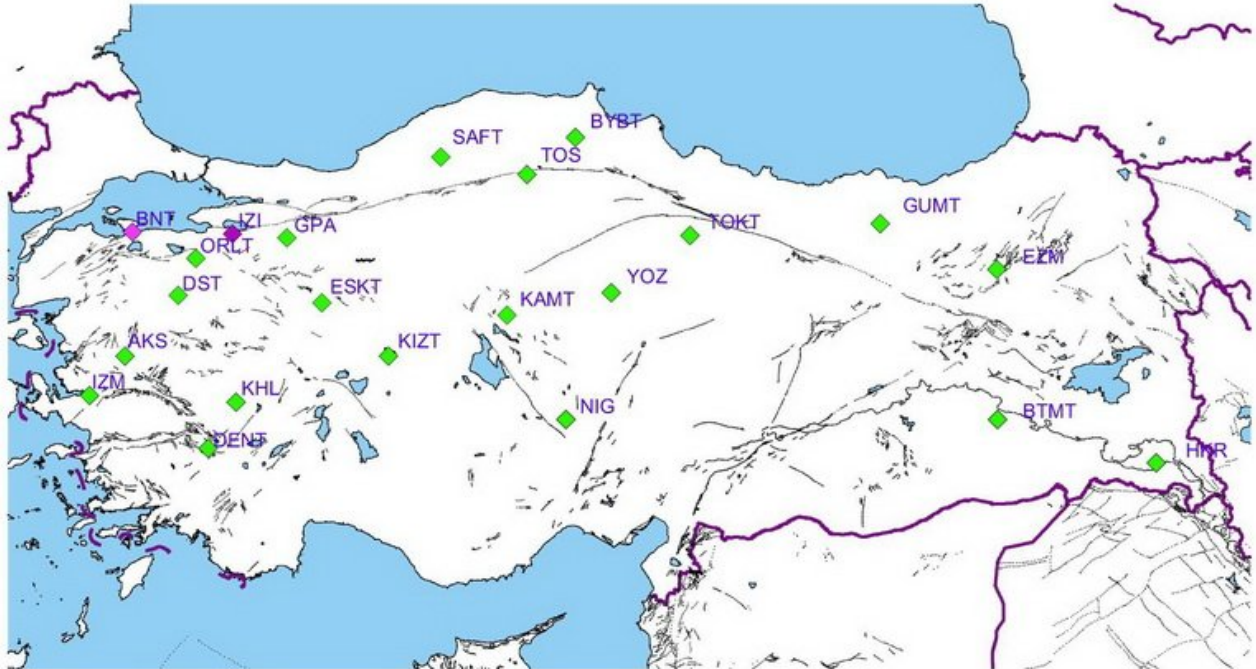
80

20

101	1	KISA PERİYOT (SHORT PERIOD) İSTASYONLAR	AKS	31	0	31	100	0	72	28
102	2		BNT	31	0	31	100	0		
103	3		BTMT	29	2	31	94	6		
104	4		BYBT	28	3	31	90	10		
105	5		DENT	7	24	31	23	77		
106	6		DST	6	25	31	19	81		
107	7		ESKT	0	31	31	0	100		
108	8		EZM	29	2	31	94	6		
109	9		GPA	28	3	31	90	10		
110	10		GUMT	31	0	31	100	0		
111	11		HKR	0	31	31	0	100		
112	12		IZI	30	1	31	97	3		
113	13		IZM	31	0	31	100	0		
114	14		KAMT	14	17	31	45	55		
115	15		KHL	31	0	31	100	0		
116	16		KIZT	11	20	31	35	65		
117	17		NIG	31	0	31	100	0		
118	18		ORLT	31	0	31	100	0		
119	19		SAFT	31	0	31	100	0		
120	20		TOKT	0	31	31	0	100		
121	21		TOS	30	1	31	97	3		
122	22		YOZ	31	0	31	100	0		
							+	(-)		
2010 OCAK ORTALAMA %							78	22		

KISA PERİYOT (SP) İSTASYONLAR Toplam: 22 Adet

Ocak 2010

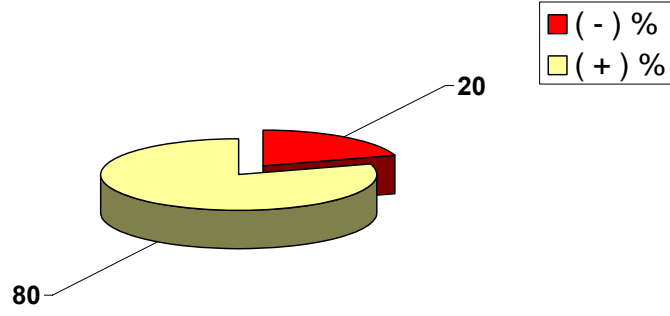


◆ Kısa Periyot
TELEFON HATTI
20 Adet

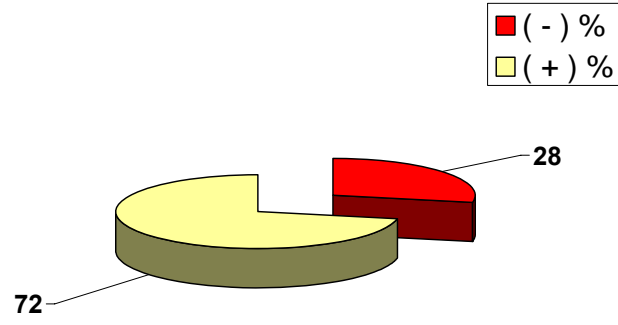
◆ Kısa Periyot
TELEMETRİ
1 Adet

◆ Kısa Periyot
UYDU İLETİŞİMLİ
1 Adet

2010 OCAK AYI BROAD-BAND İSTASYONLARI VERİMLİLİK GRAFİĞİ



2010 OCAK AYI SHORT PERIOD İSTASYONLARI VERİMLİLİK GRAFİĞİ



TÜRKİYE DEPREM ETKİNLİĞİ (2010 YILI OCAK AYI)

No	Tarih - Date			Zaman - Time			Koordinat - Coordinate			Derinlik - Depth		Magnitüd - Magnitude										
	Gün	Ay	Yıl	Saat	Dak.	San.	Enlem-K	Boylam-D	Ref	Km.	Ref	Ms	Ref	Mb	Ref	Md	Ref	MI	Ref	Mw	Ref	
1	1	1	2010	5	37	29.0	34.33	25.30	N	39	N			4.2	N							
2	1	1	2010	7	33	23.5	36.20	30.28	R	29	R					3.0	R					
3	1	1	2010	8	39	43.1	37.82	29.17	R	5	R					2.6	R					
4	1	1	2010	8	40	11.6	38.22	32.47	R	26	R					2.7	R					
5	1	1	2010	9	2	56.0	39.35	38.45	R	7	R					3.0	R					
6	1	1	2010	10	10	38.0	37.19	37.38	R	19	R					2.9	R					
7	1	1	2010	11	3	10.3	39.33	40.96	R	9	R					2.9	R					
8	1	1	2010	11	48	58.5	40.41	34.62	R	5	R					2.8	R					
9	1	1	2010	13	2	56.6	37.03	36.09	R	9	R					2.8	R					
10	1	1	2010	14	24	3.7	39.09	29.48	R	10	R					2.9	R					
11	1	1	2010	17	27	18.2	40.48	29.14	R	6	R					2.8	R					
12	1	1	2010	18	6	57.4	35.90	27.16	R	10	R							3.8	R			
13	1	1	2010	18	41	53.3	39.13	26.52	R	7	R					2.8	R					
14	1	1	2010	21	1	21.1	40.15	28.29	R	5	R					3.0	R					
15	1	1	2010	21	20	17.4	37.96	27.44	R	7	R					2.8	R					
16	1	1	2010	22	53	44.7	39.52	33.14	R	7	R					2.2	R					
17	2	1	2010	0	19	46.6	39.11	29.13	R	5	R					2.8	R					
18	2	1	2010	2	55	38.0	39.29	42.10	R	24	R					2.8	R					
19	2	1	2010	3	1	36.5	37.49	39.03	R	8	R					2.5	R					
20	2	1	2010	4	6	37.6	37.10	29.82	R	15	R					2.8	R					

TÜRKİYE DEPREM ETKİNLİĞİ (2010 YILI OCAK AYI)

No	Tarih - Date			Zaman - Time			Koordinat - Coordinate			Derinlik - Depth		Magnitüd - Magnitude									
	Gün	Ay	Yıl	Saat	Dak.	San.	Enlem-K	Boylam-D	Ref	Km.	Ref	Ms	Ref	Mb	Ref	Md	Ref	MI	Ref	Mw	Ref
21	2	1	2010	4	14	34.7	40.85	29.28	R	9	R					3.0	R				
22	2	1	2010	6	49	41.0	36.56	35.11	R	28	R					3.0	R				
23	2	1	2010	7	59	13.8	38.78	27.67	R	2	R					2.5	R				
24	2	1	2010	8	6	28.0	38.89	38.82	R	6	R					2.4	R				
25	2	1	2010	8	38	2.4	37.17	28.23	R	5	R					2.4	R				
26	2	1	2010	9	5	1.5	36.27	34.62	R	7	R					2.7	R				
27	2	1	2010	9	48	52.5	40.70	29.13	R	25	R					2.5	R				
28	2	1	2010	10	15	31.4	40.25	30.01	R	5	R					2.1	R				
29	2	1	2010	11	49	20.9	40.30	27.80	R	6	R					2.0	R				
30	2	1	2010	11	52	1.5	37.43	36.34	R	5	R					2.2	R				
31	2	1	2010	13	27	58.6	39.46	38.63	R	7	R					2.5	R				
32	2	1	2010	15	8	41.6	38.79	28.68	R	5	R					2.3	R				
33	2	1	2010	18	9	31.0	35.45	27.75	R	5	R					3.6	R				
34	2	1	2010	18	12	13.8	40.37	34.72	R	9	R					2.3	R				
35	2	1	2010	23	9	52.1	39.51	32.65	R	8	R					2.5	R				
36	3	1	2010	1	30	22.1	38.88	31.42	R	5	R					2.8	R				
37	3	1	2010	2	30	54.1	37.08	28.84	R	11	R					3.0	R				
38	3	1	2010	3	3	49.2	37.14	28.66	R	17	R					2.5	R				
39	3	1	2010	3	9	19.0	39.32	37.92	R	17	R					2.9	R				
40	3	1	2010	3	40	11.6	39.89	40.30	R	5	R					3.3	R				

TÜRKİYE DEPREM ETKİNLİĞİ (2010 YILI OCAK AYI)

No	Tarih - Date			Zaman - Time			Koordinat - Coordinate			Derinlik - Depth		Magnitüd - Magnitude									
	Gün	Ay	Yıl	Saat	Dak.	San.	Enlem-K	Boylam-D	Ref	Km.	Ref	Ms	Ref	Mb	Ref	Md	Ref	MI	Ref	Mw	Ref
41	3	1	2010	4	49	20.1	37.18	26.94	R	16	R					2.3	R				
42	3	1	2010	5	9	53.0	35.08	25.89	R	2	R							3.6	R		
43	3	1	2010	6	57	6.6	37.45	35.69	R	16	R					2.9	R				
44	3	1	2010	8	55	44.8	37.25	28.18	R	8	R					2.6	R				
45	3	1	2010	9	2	11.3	37.92	32.73	R	2	R					2.8	R				
46	3	1	2010	9	21	28.7	40.69	27.47	R	7	R					1.7	R				
47	3	1	2010	12	5	41.6	39.99	39.96	R	8	R					2.5	R				
48	3	1	2010	13	12	36.1	39.37	38.43	R	12	R					2.6	R				
49	3	1	2010	13	28	59.7	37.02	29.15	R	2	R					2.6	R				
50	3	1	2010	13	32	37.4	36.77	39.26	R	5	R					2.9	R				
51	3	1	2010	13	33	24.3	37.15	35.45	R	21	R					2.0	R				
52	3	1	2010	14	2	58.7	40.64	27.43	R	6	R					2.5	R				
53	3	1	2010	14	5	53.2	40.63	27.44	R	16	R					2.5	R				
54	3	1	2010	15	53	16.3	37.54	38.76	R	6	R					2.8	R				
55	3	1	2010	19	51	49.0	41.25	28.25	R	5	R					2.8	R				
56	3	1	2010	21	52	32.6	37.67	26.77	R	20	R					2.8	R				
57	3	1	2010	23	11	3.8	36.81	40.45	R	8	R							3.4	R		
58	3	1	2010	23	20	31.9	37.63	26.85	R	2	R					2.9	R				
59	4	1	2010	0	32	24.3	37.25	26.90	R	3	R					3.1	R				
60	4	1	2010	0	42	38.6	37.27	26.91	R	16	R					2.8	R				

TÜRKİYE DEPREM ETKİNLİĞİ (2010 YILI OCAK AYI)

No	Tarih - Date			Zaman - Time			Koordinat - Coordinate			Derinlik - Depth		Magnitüd - Magnitude									
	Gün	Ay	Yıl	Saat	Dak.	San.	Enlem-K	Boylam-D	Ref	Km.	Ref	Ms	Ref	Mb	Ref	Md	Ref	MI	Ref	Mw	Ref
61	4	1	2010	0	53	27.5	37.11	28.49	R	19	R					2.4	R				
62	4	1	2010	1	42	36.5	37.53	35.65	R	9	R					2.6	R				
63	4	1	2010	2	19	44.4	37.23	26.88	R	5	R					3.1	R				
64	4	1	2010	2	29	48.4	37.28	27.02	R	8	R					2.8	R				
65	4	1	2010	2	48	10.8	40.12	41.65	R	6	R					2.7	R				
66	4	1	2010	3	57	23.6	40.34	34.57	R	7	R					2.3	R				
67	4	1	2010	5	11	16.0	39.51	33.05	R	5	R					2.6	R				
68	4	1	2010	7	22	35.2	37.26	42.73	R	6	R					3.3	R				
69	4	1	2010	7	56	6.4	38.95	25.88	R	9	R					3.3	R				
70	4	1	2010	9	19	43.0	37.08	34.40	R	5	R					2.6	R				
71	4	1	2010	9	30	34.9	39.98	42.35	R	20	R					2.9	R				
72	4	1	2010	11	24	17.0	37.65	35.60	R	10	R					2.8	R				
73	4	1	2010	11	55	42.2	40.44	33.19	R	8	R					2.8	R				
74	4	1	2010	12	41	28.9	41.30	35.79	R	7	R					3.0	R				
75	4	1	2010	12	57	5.0	39.91	41.80	R	5	R					3.3	R				
76	4	1	2010	13	8	4.6	38.51	25.47	R	12	R					3.4	R				
77	4	1	2010	15	8	19.0	40.86	27.55	R	9	R					2.6	R				
78	4	1	2010	15	12	13.1	35.93	27.36	R	7	R							2.8	R		
79	5	1	2010	2	47	16.7	36.18	25.41	N	105	N			4.5	N						
80	5	1	2010	10	19	23.0	38.38	27.31	R	12	R					2.6	R				

TÜRKİYE DEPREM ETKİNLİĞİ (2010 YILI OCAK AYI)

No	Tarih - Date			Zaman - Time			Koordinat - Coordinate			Derinlik - Depth		Magnitüd - Magnitude										
	Gün	Ay	Yıl	Saat	Dak.	San.	Enlem-K	Boylam-D	Ref	Km.	Ref	Ms	Ref	Mb	Ref	Md	Ref	MI	Ref	Mw	Ref	
81	5	1	2010	13	26	36.5	37.96	34.83	R	8	R					2.8	R					
82	5	1	2010	13	50	5.4	39.86	27.32	R	9	R					2.6	R					
83	5	1	2010	14	48	39.8	40.25	27.75	R	2	R					2.6	R					
84	5	1	2010	17	25	37.1	37.44	26.98	R	16	R							3.5	R			
85	5	1	2010	18	13	29.7	39.20	28.06	R	9	R					3.0	R					
86	5	1	2010	20	22	16.1	37.50	35.67	R	7	R					2.7	R					
87	5	1	2010	20	27	6.4	39.77	26.42	R	4	R					2.4	R					
88	5	1	2010	20	36	17.4	37.51	35.68	R	11	R					2.6	R					
89	5	1	2010	22	39	51.8	36.97	27.52	R	5	R					2.9	R					
90	5	1	2010	23	32	48.9	39.93	39.50	R	8	R					2.3	R					
91	6	1	2010	0	31	41.4	36.97	28.39	R	6	R					2.4	R					
92	6	1	2010	2	10	56.7	37.04	28.45	R	6	R					3.0	R					
93	6	1	2010	2	22	15.5	37.37	37.07	R	5	R					2.9	R					
94	6	1	2010	3	31	12.5	39.83	27.57	R	5	R					2.2	R					
95	6	1	2010	4	48	59.6	37.14	28.50	R	17	R					2.3	R					
96	6	1	2010	4	53	28.9	36.98	28.43	R	20	R					2.6	R					
97	6	1	2010	5	22	48.3	37.94	29.03	R	9	R					2.5	R					
98	6	1	2010	7	14	58.6	36.01	30.74	R	83	R					3.0	R					
99	6	1	2010	10	51	49.2	37.45	35.45	R	5	R					2.7	R					
100	6	1	2010	12	22	32.8	39.47	33.04	R	7	R					2.7	R					

TÜRKİYE DEPREM ETKİNLİĞİ (2010 YILI OCAK AYI)

No	Tarih - Date			Zaman - Time			Koordinat - Coordinate			Derinlik - Depth		Magnitüd - Magnitude										
	Gün	Ay	Yıl	Saat	Dak.	San.	Enlem-K	Boylam-D	Ref	Km.	Ref	Ms	Ref	Mb	Ref	Md	Ref	MI	Ref	Mw	Ref	
101	6	1	2010	17	8	9.3	38.46	39.12	R	11	R					2.7	R					
102	6	1	2010	19	16	2.6	40.63	29.04	R	7	R					2.5	R					
103	6	1	2010	20	48	36.5	37.59	35.67	R	14	R					2.2	R					
104	7	1	2010	2	1	36.3	39.45	33.06	R	4	R					2.1	R					
105	7	1	2010	2	15	52.8	39.27	38.27	R	11	R					2.3	R					
106	7	1	2010	4	8	38.3	35.02	26.76	R	5	R					4.0	R					
107	7	1	2010	8	40	44.2	38.61	31.53	R	19	R					2.8	R					
108	7	1	2010	9	44	4.8	40.50	27.63	R	5	R					2.0	R					
109	7	1	2010	10	23	59.9	36.52	36.34	R	19	R					2.4	R					
110	7	1	2010	11	10	52.4	39.32	38.46	R	7	R					2.9	R					
111	7	1	2010	11	18	25.0	38.64	35.78	R	7	R					3.2	R					
112	7	1	2010	11	21	41.9	37.04	34.28	R	6	R					2.2	R					
113	7	1	2010	12	14	25.4	41.40	35.89	R	3	R					3.0	R					
114	7	1	2010	12	36	8.6	37.84	36.19	R	23	R					2.9	R					
115	7	1	2010	12	40	6.8	40.16	29.94	R	16	R					2.3	R					
116	7	1	2010	12	48	38.9	40.56	39.43	R	32	R					2.7	R					
117	7	1	2010	13	10	26.5	35.35	28.84	R	7	R					3.0	R					
118	7	1	2010	13	30	57.1	37.54	35.39	R	13	R					2.5	R					
119	7	1	2010	14	12	0.0	39.69	26.03	R	19	R					2.9	R					
120	7	1	2010	14	35	35.2	36.69	29.96	R	6	R							3.6	R			

TÜRKİYE DEPREM ETKİNLİĞİ (2010 YILI OCAK AYI)

No	Tarih - Date			Zaman - Time			Koordinat - Coordinate			Derinlik - Depth		Magnitüd - Magnitude									
	Gün	Ay	Yıl	Saat	Dak.	San.	Enlem-K	Boylam-D	Ref	Km.	Ref	Ms	Ref	Mb	Ref	Md	Ref	MI	Ref	Mw	Ref
121	7	1	2010	15	31	51.0	39.68	29.44	R	5	R					2.7	R				
122	7	1	2010	17	27	36.6	39.28	40.96	R	5	R					3.0	R				
123	7	1	2010	17	40	54.7	38.29	38.90	R	5	R					2.9	R				
124	7	1	2010	17	46	10.9	36.53	41.28	R	6	R					3.6	R	3.6	R		
125	7	1	2010	18	33	59.2	39.81	40.56	R	6	R					2.9	R				
126	7	1	2010	19	6	59.8	39.80	40.54	R	5	R					2.8	R				
127	7	1	2010	20	26	17.1	39.60	38.75	R	6	R					2.8	R				
128	7	1	2010	21	58	44.2	36.11	28.23	R	5	R					3.5	R				
129	7	1	2010	22	31	29.3	36.12	28.30	R	5	R					2.9	R				
130	8	1	2010	1	9	46.9	38.85	27.82	R	6	R					3.3	R				
131	8	1	2010	1	31	27.2	38.61	26.42	R	10	R					2.9	R				
132	8	1	2010	2	4	49.5	39.78	38.99	R	8	R					2.8	R				
133	8	1	2010	2	51	56.9	38.40	31.76	R	10	R					2.7	R				
134	8	1	2010	2	58	23.0	37.31	36.38	R	6	R					2.7	R				
135	8	1	2010	3	33	23.1	39.76	25.60	R	2	R					2.9	R				
136	8	1	2010	12	9	32.9	39.49	33.00	R	3	R					3.6	R				
137	8	1	2010	13	45	29.1	39.78	29.46	R	12	R					2.6	R				
138	8	1	2010	16	20	27.7	40.22	38.09	R	6	R					2.8	R				
139	8	1	2010	22	48	9.5	38.73	31.48	R	22	R					2.5	R				
140	9	1	2010	2	50	16.0	39.92	24.95	R	10	R					3.0	R				

TÜRKİYE DEPREM ETKİNLİĞİ (2010 YILI OCAK AYI)

No	Tarih - Date			Zaman - Time			Koordinat - Coordinate			Derinlik - Depth		Magnitüd - Magnitude									
	Gün	Ay	Yıl	Saat	Dak.	San.	Enlem-K	Boylam-D	Ref	Km.	Ref	Ms	Ref	Mb	Ref	Md	Ref	MI	Ref	Mw	Ref
141	9	1	2010	4	27	16.0	37.38	35.86	R	21	R					3.2	R				
142	9	1	2010	4	50	29.7	39.95	37.55	R	14	R					3.0	R				
143	9	1	2010	5	34	59.0	37.86	35.22	R	5	R					2.9	R				
144	9	1	2010	5	40	18.8	40.66	27.65	R	12	R					2.4	R				
145	9	1	2010	6	3	54.8	39.10	29.10	R	5	R					2.8	R				
146	9	1	2010	10	27	4.4	37.28	27.84	R	5	R					2.3	R				
147	9	1	2010	11	5	42.1	37.48	35.43	R	3	R					2.5	R				
148	9	1	2010	11	15	35.7	38.24	25.54	R	19	R					2.9	R				
149	9	1	2010	11	18	41.0	38.95	26.17	R	9	R					2.8	R				
150	9	1	2010	11	59	18.2	39.98	28.07	R	8	R					2.5	R				
151	9	1	2010	13	21	14.8	38.24	31.99	R	5	R					2.5	R				
152	9	1	2010	13	24	0.7	37.31	38.47	R	5	R					2.8	R				
153	9	1	2010	13	53	41.8	38.71	35.76	R	2	R					2.8	R				
154	9	1	2010	14	15	42.6	39.33	38.51	R	7	R					2.5	R				
155	9	1	2010	14	43	39.5	37.19	27.84	R	5	R					2.5	R				
156	9	1	2010	14	44	28.8	38.31	42.36	R	13	R					2.8	R				
157	9	1	2010	15	0	9.7	40.34	27.85	R	9	R					2.4	R				
158	9	1	2010	15	31	11.4	40.01	41.44	R	5	R					2.7	R				
159	9	1	2010	16	17	33.2	40.48	41.01	R	4	R					3.2	R				
160	9	1	2010	17	32	7.8	35.08	27.70	R	45	R							3.8	R		

TÜRKİYE DEPREM ETKİNLİĞİ (2010 YILI OCAK AYI)

No	Tarih - Date			Zaman - Time			Koordinat - Coordinate			Derinlik - Depth		Magnitüd - Magnitude									
	Gün	Ay	Yıl	Saat	Dak.	San.	Enlem-K	Boylam-D	Ref	Km.	Ref	Ms	Ref	Mb	Ref	Md	Ref	MI	Ref	Mw	Ref
161	9	1	2010	18	32	22.3	39.11	43.92	R	15	R					2.7	R				
162	9	1	2010	21	33	33.0	39.85	33.40	R	16	R					3.0	R				
163	9	1	2010	21	42	11.4	35.86	28.98	R	10	R					3.6	R				
164	10	1	2010	0	36	16.0	38.13	42.75	R	14	R					3.0	R				
165	10	1	2010	1	7	29.9	38.88	27.88	R	14	R					2.8	R				
166	10	1	2010	2	23	25.2	36.86	27.39	R	4	R					3.3	R				
167	10	1	2010	4	51	52.8	37.19	32.71	R	10	R					3.0	R				
168	10	1	2010	5	18	27.6	38.18	27.16	R	5	R					2.8	R				
169	10	1	2010	9	43	25.9	39.84	41.80	R	12	R					2.7	R				
170	10	1	2010	10	25	47.0	37.70	36.30	R	5	R					3.0	R				
171	10	1	2010	10	47	54.3	37.05	28.44	R	3	R					2.8	R				
172	10	1	2010	15	16	23.2	36.99	28.44	R	5	R					2.8	R				
173	10	1	2010	17	35	42.8	39.50	26.55	R	6	R					2.9	R				
174	10	1	2010	18	31	52.1	37.91	29.31	R	5	R					3.4	R				
175	10	1	2010	20	29	14.4	36.98	36.00	R	3	R					3.1	R				
176	10	1	2010	21	0	41.4	37.08	35.93	R	7	R					2.5	R				
177	10	1	2010	22	38	5.9	37.44	36.16	R	5	R					2.5	R				
178	11	1	2010	1	41	10.1	37.41	36.20	R	10	R					2.6	R				
179	11	1	2010	2	18	6.9	40.43	28.15	R	7	R					2.6	R				
180	11	1	2010	3	19	32.1	38.91	26.73	R	12	R					2.9	R				

TÜRKİYE DEPREM ETKİNLİĞİ (2010 YILI OCAK AYI)

No	Tarih - Date			Zaman - Time			Koordinat - Coordinate			Derinlik - Depth		Magnitüd - Magnitude									
	Gün	Ay	Yıl	Saat	Dak.	San.	Enlem-K	Boylam-D	Ref	Km.	Ref	Ms	Ref	Mb	Ref	Md	Ref	MI	Ref	Mw	Ref
181	11	1	2010	3	23	34.7	38.73	26.76	R	11	R					2.8	R				
182	11	1	2010	7	14	16.4	37.02	36.16	R	26	R					2.5	R				
183	11	1	2010	7	59	38.7	35.89	28.66	R	2	R					2.6	R				
184	11	1	2010	7	59	55.4	36.61	28.70	R	14	R					2.2	R				
185	11	1	2010	8	13	49.7	37.82	30.52	R	8	R					2.8	R				
186	11	1	2010	9	15	33.9	37.25	28.20	R	7	R					2.6	R				
187	11	1	2010	9	22	45.0	40.88	39.06	R	9	R					2.5	R				
188	11	1	2010	10	23	8.8	37.93	27.59	R	4	R					2.6	R				
189	11	1	2010	10	59	14.9	38.28	42.36	R	2	R					2.9	R				
190	11	1	2010	11	43	4.5	37.98	31.45	R	5	R					2.4	R				
191	11	1	2010	13	25	2.2	37.43	35.43	R	8	R					2.8	R				
192	11	1	2010	15	41	42.1	38.76	29.34	R	5	R					2.5	R				
193	11	1	2010	20	4	53.5	40.02	38.95	R	5	R					2.6	R				
194	11	1	2010	20	11	6.4	37.29	26.94	R	2	R					2.7	R				
195	11	1	2010	23	16	20.4	37.11	26.87	R	28	R					2.7	R				
196	12	1	2010	2	36	38.1	37.35	29.62	R	8	R					2.7	R				
197	12	1	2010	2	51	50.8	40.35	29.17	R	6	R					2.5	R				
198	12	1	2010	3	20	12.6	38.62	25.74	R	4	R					2.9	R				
199	12	1	2010	5	31	39.2	40.48	28.15	R	7	R					3.0	R				
200	12	1	2010	9	41	48.2	40.65	27.60	R	4	R					1.6	R				

TÜRKİYE DEPREM ETKİNLİĞİ (2010 YILI OCAK AYI)

No	Tarih - Date			Zaman - Time			Koordinat - Coordinate			Derinlik - Depth		Magnitüd - Magnitude									
	Gün	Ay	Yıl	Saat	Dak.	San.	Enlem-K	Boylam-D	Ref	Km.	Ref	Ms	Ref	Mb	Ref	Md	Ref	MI	Ref	Mw	Ref
201	12	1	2010	9	42	53.2	38.42	27.40	R	4	R					1.9	R				
202	12	1	2010	10	4	52.8	40.79	34.81	R	4	R					2.8	R				
203	12	1	2010	10	6	50.7	35.22	33.55	R	5	R					2.6	R				
204	12	1	2010	10	23	38.5	40.80	36.36	R	30	R					2.5	R				
205	12	1	2010	10	56	35.0	38.28	31.94	R	17	R					2.7	R				
206	12	1	2010	11	16	15.2	38.80	40.31	R	2	R					2.8	R				
207	12	1	2010	11	49	55.9	38.65	37.96	R	4	R					2.4	R				
208	12	1	2010	12	7	37.2	38.71	29.34	R	5	R					2.7	R				
209	12	1	2010	12	54	55.0	41.61	35.46	R	4	R					2.9	R				
210	12	1	2010	13	3	11.7	38.12	32.54	R	12	R					2.8	R				
211	12	1	2010	13	40	42.7	38.97	27.60	R	6	R					2.5	R				
212	12	1	2010	14	26	8.2	38.40	27.29	R	4	R					2.4	R				
213	12	1	2010	14	34	10.5	37.94	32.28	R	5	R					2.5	R				
214	12	1	2010	17	35	45.2	39.15	29.02	R	5	R					2.4	R				
215	12	1	2010	21	37	26.3	40.55	25.71	R	9	R					3.0	R				
216	12	1	2010	21	39	28.8	40.51	25.70	R	7	R					3.3	R				
217	12	1	2010	22	46	11.2	40.63	29.01	R	7	R					3.2	R				
218	12	1	2010	23	13	57.7	38.01	38.24	R	7	R					3.0	R				
219	13	1	2010	0	35	58.5	37.14	27.50	R	8	R					2.5	R				
220	13	1	2010	1	1	50.0	39.63	25.87	R	7	R					2.8	R				

TÜRKİYE DEPREM ETKİNLİĞİ (2010 YILI OCAK AYI)

No	Tarih - Date			Zaman - Time			Koordinat - Coordinate			Derinlik - Depth		Magnitüd - Magnitude									
	Gün	Ay	Yıl	Saat	Dak.	San.	Enlem-K	Boylam-D	Ref	Km.	Ref	Ms	Ref	Mb	Ref	Md	Ref	MI	Ref	Mw	Ref
221	13	1	2010	1	6	9.1	40.59	29.06	R	5	R					2.7	R				
222	13	1	2010	2	37	21.6	40.48	34.56	R	17	R					2.7	R				
223	13	1	2010	2	44	31.2	38.81	40.35	R	5	R					3.3	R				
224	13	1	2010	3	54	51.5	40.64	28.77	R	11	R							3.4	R		
225	13	1	2010	4	25	2.8	38.03	35.16	R	3	R					3.2	R				
226	13	1	2010	5	42	0.5	38.78	40.36	R	5	R					2.9	R				
227	13	1	2010	6	56	52.6	39.45	38.44	R	4	R					3.3	R				
228	13	1	2010	7	5	19.1	38.73	26.63	R	8	R					2.8	R				
229	13	1	2010	7	45	51.6	38.68	26.65	R	6	R					2.5	R				
230	13	1	2010	10	3	24.7	37.21	28.26	R	4	R					2.7	R				
231	13	1	2010	10	39	38.5	37.10	36.53	R	10	R					2.8	R				
232	13	1	2010	11	55	20.8	39.15	29.48	R	5	R					2.8	R				
233	13	1	2010	12	30	4.3	37.07	37.40	R	8	R					2.6	R				
234	13	1	2010	12	39	27.7	37.12	30.53	R	26	R					2.5	R				
235	13	1	2010	14	5	3.5	40.61	36.37	R	5	R					2.1	R				
236	13	1	2010	14	58	40.3	40.34	27.85	R	5	R					2.4	R				
237	13	1	2010	16	30	2.7	35.72	30.65	R	11	R					3.5	R				
238	13	1	2010	17	53	49.1	38.78	40.30	R	7	R					3.2	R				
239	13	1	2010	21	52	52.4	36.49	40.48	R	5	R					3.1	R				
240	13	1	2010	23	45	31.8	38.44	25.44	R	5	R					3.6	R				

TÜRKİYE DEPREM ETKİNLİĞİ (2010 YILI OCAK AYI)

No	Tarih - Date			Zaman - Time			Koordinat - Coordinate			Derinlik - Depth		Magnitüd - Magnitude									
	Gün	Ay	Yıl	Saat	Dak.	San.	Enlem-K	Boylam-D	Ref	Km.	Ref	Ms	Ref	Mb	Ref	Md	Ref	MI	Ref	Mw	Ref
241	13	1	2010	23	57	1.6	39.99	24.08	R	9	R					3.5	R				
242	14	1	2010	0	15	18.9	38.63	26.47	R	5	R					3.6	R				
243	14	1	2010	4	11	40.1	40.77	31.64	R	5	R					3.2	R				
244	14	1	2010	11	10	52.4	37.19	28.75	R	8	R					2.7	R				
245	14	1	2010	12	10	43.7	37.59	35.67	R	5	R					2.3	R				
246	14	1	2010	13	2	25.6	37.60	38.38	R	22	R					2.7	R				
247	14	1	2010	13	4	4.2	40.74	41.44	R	5	R					2.8	R				
248	14	1	2010	15	0	29.9	36.54	43.38	R	2	R					3.0	R				
249	14	1	2010	16	13	2.4	38.40	25.60	R	13	R					2.8	R				
250	14	1	2010	16	32	5.9	39.88	42.03	R	14	R					2.6	R				
251	14	1	2010	17	14	58.9	36.35	36.22	R	7	R					3.3	R				
252	14	1	2010	18	20	7.8	37.09	28.44	R	16	R					2.7	R				
253	14	1	2010	18	31	23.0	37.04	28.45	R	14	R					2.5	R				
254	14	1	2010	18	59	56.3	36.66	31.29	R	27	R					2.8	R				
255	14	1	2010	19	58	45.7	41.02	39.78	R	26	R					2.4	R				
256	14	1	2010	22	31	2.9	37.23	42.46	R	5	R					3.0	R				
257	15	1	2010	1	45	19.4	38.96	29.04	R	3	R					2.2	R				
258	15	1	2010	2	5	5.8	35.55	30.58	R	19	R					3.4	R				
259	15	1	2010	2	36	24.6	37.50	35.93	R	19	R					2.5	R				
260	15	1	2010	3	57	18.4	38.44	41.70	R	6	R					2.5	R				

TÜRKİYE DEPREM ETKİNLİĞİ (2010 YILI OCAK AYI)

No	Tarih - Date			Zaman - Time			Koordinat - Coordinate			Derinlik - Depth		Magnitüd - Magnitude									
	Gün	Ay	Yıl	Saat	Dak.	San.	Enlem-K	Boylam-D	Ref	Km.	Ref	Ms	Ref	Mb	Ref	Md	Ref	MI	Ref	Mw	Ref
261	15	1	2010	4	22	12.8	39.09	27.84	R	16	R					2.6	R				
262	15	1	2010	4	47	59.4	38.61	39.73	R	15	R					2.7	R				
263	15	1	2010	8	28	59.7	34.32	26.18	R	35	R			4.1	N			3.6	R		
264	15	1	2010	10	30	38.2	40.27	25.28	R	13	R					2.8	R				
265	15	1	2010	11	38	51.5	35.89	30.34	R	64	R					3.3	R				
266	15	1	2010	12	20	38.0	40.74	36.00	R	6	R					2.4	R				
267	15	1	2010	12	55	3.0	39.73	33.04	R	5	R					2.5	R				
268	15	1	2010	12	59	35.9	39.74	41.74	R	5	R					2.9	R				
269	15	1	2010	13	12	24.1	39.58	40.19	R	8	R					2.8	R				
270	15	1	2010	14	11	0.0	39.49	32.03	R	2	R					2.8	R				
271	15	1	2010	14	17	52.8	38.93	27.81	R	6	R					2.6	R				
272	15	1	2010	14	19	46.1	36.19	28.94	R	5	R					2.8	R				
273	15	1	2010	15	30	46.5	40.65	26.62	R	12	R					1.4	R				
274	15	1	2010	16	36	16.6	37.24	43.51	R	5	R					3.2	R				
275	15	1	2010	17	45	34.1	39.32	32.93	R	15	R					2.6	R				
276	15	1	2010	18	31	31.0	37.29	30.27	R	5	R					2.8	R				
277	15	1	2010	19	38	58.3	39.53	27.69	R	6	R					2.6	R				
278	15	1	2010	20	12	42.5	38.47	39.38	R	10	R					2.7	R				
279	15	1	2010	20	17	29.8	37.68	26.57	R	77	R					2.5	R				
280	15	1	2010	21	23	14.8	40.12	32.76	R	2	R					2.5	R				

TÜRKİYE DEPREM ETKİNLİĞİ (2010 YILI OCAK AYI)

No	Tarih - Date			Zaman - Time			Koordinat - Coordinate			Derinlik - Depth		Magnitüd - Magnitude									
	Gün	Ay	Yıl	Saat	Dak.	San.	Enlem-K	Boylam-D	Ref	Km.	Ref	Ms	Ref	Mb	Ref	Md	Ref	MI	Ref	Mw	Ref
281	15	1	2010	21	41	24.2	40.61	29.05	R	10	R					2.5	R				
282	15	1	2010	22	19	15.0	36.06	28.27	R	5	R					2.7	R				
283	15	1	2010	22	43	7.1	39.16	29.50	R	6	R					2.8	R				
284	15	1	2010	23	4	40.8	40.81	28.17	R	10	R					2.5	R				
285	15	1	2010	23	11	49.0	39.09	40.31	R	5	R					2.8	R				
286	15	1	2010	23	36	45.2	37.80	32.52	R	7	R					2.6	R				
287	15	1	2010	23	45	11.8	39.13	36.08	R	8	R					2.7	R				
288	15	1	2010	23	46	33.9	39.14	36.13	R	7	R					2.7	R				
289	15	1	2010	23	47	15.8	39.12	36.08	R	5	R					2.6	R				
290	15	1	2010	23	55	26.6	39.13	36.12	R	5	R					3.1	R				
291	16	1	2010	0	16	49.8	39.14	36.15	R	5	R					3.0	R				
292	16	1	2010	0	54	24.0	37.61	31.23	R	5	R					2.8	R				
293	16	1	2010	1	11	26.9	37.95	27.10	R	21	R					2.3	R				
294	16	1	2010	1	19	37.2	35.98	29.91	R	32	R					2.9	R				
295	16	1	2010	1	27	20.6	39.42	41.05	R	28	R					2.4	R				
296	16	1	2010	1	51	2.0	38.88	31.44	R	5	R					2.7	R				
297	16	1	2010	2	45	44.0	40.26	41.91	R	32	R					2.8	R				
298	16	1	2010	6	16	1.3	38.95	26.43	R	4	R					2.8	R				
299	16	1	2010	8	6	44.2	37.15	42.68	R	13	R							3.3	R		
300	16	1	2010	9	57	35.5	37.99	27.13	R	31	R					2.7	R				

TÜRKİYE DEPREM ETKİNLİĞİ (2010 YILI OCAK AYI)

No	Tarih - Date			Zaman - Time			Koordinat - Coordinate			Derinlik - Depth		Magnitüd - Magnitude									
	Gün	Ay	Yıl	Saat	Dak.	San.	Enlem-K	Boylam-D	Ref	Km.	Ref	Ms	Ref	Mb	Ref	Md	Ref	MI	Ref	Mw	Ref
301	16	1	2010	10	20	57.4	38.72	44.19	R	5	R					2.7	R				
302	16	1	2010	11	5	51.4	37.50	35.41	R	14	R					2.8	R				
303	16	1	2010	12	10	42.2	39.35	38.53	R	5	R					3.0	R				
304	16	1	2010	12	51	2.5	40.20	30.01	R	7	R					2.7	R				
305	16	1	2010	12	57	59.9	40.53	29.55	R	7	R					2.8	R				
306	16	1	2010	13	21	39.0	40.31	32.63	R	5	R					3.0	R				
307	16	1	2010	13	53	45.8	36.87	39.37	R	8	R					2.9	R				
308	16	1	2010	14	50	55.2	40.35	27.82	R	7	R					2.2	R				
309	16	1	2010	14	56	20.8	36.73	29.39	R	30	R					2.8	R				
310	16	1	2010	15	2	17.5	40.60	26.28	R	16	R					1.9	R				
311	16	1	2010	15	20	59.5	37.84	32.20	R	6	R					2.5	R				
312	16	1	2010	17	23	52.8	37.28	36.08	R	7	R					2.5	R				
313	16	1	2010	17	35	24.6	37.86	32.20	R	15	R					2.3	R				
314	16	1	2010	17	54	7.3	37.50	36.11	R	5	R					3.0	R				
315	16	1	2010	18	6	5.5	39.23	41.49	R	21	R					2.4	R				
316	16	1	2010	19	54	59.4	36.60	27.98	R	5	R					2.6	R				
317	16	1	2010	20	54	25.2	35.42	27.83	R	33	R					3.4	R				
318	16	1	2010	21	3	7.6	36.62	28.54	R	13	R					3.2	R				
319	16	1	2010	21	17	46.6	40.67	35.42	R	15	R					2.8	R				
320	16	1	2010	22	35	20.7	40.26	25.44	R	5	R					2.6	R				

TÜRKİYE DEPREM ETKİNLİĞİ (2010 YILI OCAK AYI)

No	Tarih - Date			Zaman - Time			Koordinat - Coordinate			Derinlik - Depth		Magnitüd - Magnitude									
	Gün	Ay	Yıl	Saat	Dak.	San.	Enlem-K	Boylam-D	Ref	Km.	Ref	Ms	Ref	Mb	Ref	Md	Ref	MI	Ref	Mw	Ref
321	16	1	2010	22	46	36.5	38.86	27.74	R	14	R					2.4	R				
322	16	1	2010	22	49	8.3	40.28	25.40	R	5	R					2.7	R				
323	16	1	2010	23	12	52.6	37.22	36.90	R	10	R					2.8	R				
324	17	1	2010	0	7	23.5	38.94	39.01	R	8	R					2.9	R				
325	17	1	2010	0	48	31.2	35.64	27.83	R	5	R					3.3	R				
326	17	1	2010	2	17	12.3	39.07	43.70	R	8	R					3.1	R				
327	17	1	2010	3	4	28.8	39.10	41.77	R	7	R					3.1	R				
328	17	1	2010	3	8	18.3	36.96	28.42	R	14	R					2.6	R				
329	17	1	2010	3	32	12.7	36.71	28.21	R	24	R					2.8	R				
330	17	1	2010	5	17	33.7	37.67	26.95	R	4	R					2.9	R				
331	17	1	2010	5	39	40.2	37.93	27.04	R	9	R					2.7	R				
332	17	1	2010	7	19	4.7	40.08	42.74	R	5	R					3.6	R				
333	17	1	2010	10	36	23.1	38.48	39.14	R	10	R					3.0	R				
334	17	1	2010	10	59	54.5	39.65	40.06	R	5	R					2.9	R				
335	17	1	2010	11	50	13.8	38.12	37.90	R	18	R					2.8	R				
336	17	1	2010	12	55	39.5	38.45	37.90	R	5	R					2.7	R				
337	17	1	2010	13	5	45.6	40.34	44.44	R	9	R							3.2	R		
338	17	1	2010	14	4	32.2	35.37	33.36	R	6	R							2.3	R		
339	17	1	2010	14	15	14.6	39.31	38.36	R	8	R					2.7	R				
340	17	1	2010	15	45	34.0	37.17	36.72	R	5	R					3.0	R				

TÜRKİYE DEPREM ETKİNLİĞİ (2010 YILI OCAK AYI)

No	Tarih - Date			Zaman - Time			Koordinat - Coordinate			Derinlik - Depth		Magnitüd - Magnitude									
	Gün	Ay	Yıl	Saat	Dak.	San.	Enlem-K	Boylam-D	Ref	Km.	Ref	Ms	Ref	Mb	Ref	Md	Ref	MI	Ref	Mw	Ref
341	17	1	2010	17	22	57.3	39.26	42.74	R	7	R					2.9	R				
342	17	1	2010	17	32	58.7	38.98	28.76	R	16	R					2.1	R				
343	17	1	2010	18	18	7.3	39.04	41.68	R	5	R					2.9	R				
344	17	1	2010	19	37	24.8	38.71	33.59	R	8	R					3.1	R				
345	17	1	2010	19	45	16.3	39.29	27.95	R	9	R					2.7	R				
346	17	1	2010	20	16	4.1	35.26	27.86	N	29	N			4.9	N			4.8	R		
347	17	1	2010	20	59	11.1	35.26	27.72	N	60	N			4.4	N			4.1	R		
348	17	1	2010	21	36	58.0	34.90	27.50	R	24	R							3.8	R		
349	17	1	2010	22	16	1.3	34.29	32.16	R	6	R					3.7	R	3.3	R		
350	17	1	2010	22	19	18.3	36.50	37.71	R	23	R					3.0	R				
351	17	1	2010	23	4	44.7	35.57	28.10	R	2	R					3.3	R				
352	17	1	2010	23	9	12.0	35.12	27.21	R	5	R					3.5	R				
353	18	1	2010	0	12	25.1	40.71	32.87	R	9	R					2.9	R				
354	18	1	2010	0	43	1.3	35.13	26.91	R	5	R							3.7	R		
355	18	1	2010	0	49	0.1	35.57	27.24	R	5	R					3.5	R				
356	18	1	2010	1	26	26.6	34.68	27.25	R	17	R					3.8	R	3.7	R		
357	18	1	2010	1	42	35.1	35.20	27.99	R	9	R					3.4	R				
358	18	1	2010	2	2	12.6	37.56	35.63	R	14	R					2.3	R				
359	18	1	2010	2	54	42.6	35.96	25.99	R	32	R							3.1	R		
360	18	1	2010	4	31	28.0	37.72	37.26	R	22	R					2.7	R				

TÜRKİYE DEPREM ETKİNLİĞİ (2010 YILI OCAK AYI)

No	Tarih - Date			Zaman - Time			Koordinat - Coordinate			Derinlik - Depth		Magnitüd - Magnitude									
	Gün	Ay	Yıl	Saat	Dak.	San.	Enlem-K	Boylam-D	Ref	Km.	Ref	Ms	Ref	Mb	Ref	Md	Ref	MI	Ref	Mw	Ref
361	18	1	2010	5	19	49.0	37.09	30.91	R	57	R							3.4	R		
362	18	1	2010	5	39	4.5	35.45	27.63	R	5	R					3.4	R				
363	18	1	2010	10	6	34.2	39.85	40.55	R	24	R					2.7	R				
364	18	1	2010	11	3	11.8	38.12	32.65	R	6	R					2.4	R				
365	18	1	2010	11	28	17.2	37.11	34.45	R	6	R					2.3	R				
366	18	1	2010	14	16	41.7	38.36	30.88	R	5	R					2.8	R	2.9	R		
367	18	1	2010	14	25	0.5	35.31	27.68	N	51	N			4.3	N			4.0	R		
368	18	1	2010	15	11	8.4	38.48	28.58	R	6	R					2.3	R				
369	18	1	2010	16	53	1.8	40.79	33.58	R	5	R					3.2	R				
370	18	1	2010	22	19	28.9	37.76	29.53	R	10	R					2.8	R				
371	19	1	2010	0	13	57.5	39.47	33.12	R	5	R					2.7	R				
372	19	1	2010	2	8	35.6	38.98	28.76	R	5	R					3.0	R				
373	19	1	2010	10	4	58.6	37.35	39.41	R	11	R					3.1	R				
374	19	1	2010	11	16	8.0	37.42	35.41	R	5	R					2.9	R				
375	19	1	2010	14	40	39.0	40.30	27.84	R	4	R					2.3	R				
376	19	1	2010	17	36	52.0	40.81	27.56	R	3	R					3.0	R				
377	19	1	2010	18	2	35.5	38.45	29.67	R	5	R							3.3	R		
378	19	1	2010	20	21	56.3	38.58	43.32	R	27	R					3.0	R				
379	19	1	2010	23	26	11.0	39.47	28.79	R	10	R					2.9	R				
380	20	1	2010	0	9	42.3	38.94	26.46	R	13	R					2.9	R				

TÜRKİYE DEPREM ETKİNLİĞİ (2010 YILI OCAK AYI)

No	Tarih - Date			Zaman - Time			Koordinat - Coordinate			Derinlik - Depth		Magnitüd - Magnitude									
	Gün	Ay	Yıl	Saat	Dak.	San.	Enlem-K	Boylam-D	Ref	Km.	Ref	Ms	Ref	Mb	Ref	Md	Ref	MI	Ref	Mw	Ref
381	20	1	2010	2	8	52.8	36.50	27.89	R	54	R							3.1	R		
382	20	1	2010	3	2	51.5	39.02	26.54	R	8	R					3.1	R				
383	20	1	2010	3	17	31.2	38.95	26.52	R	2	R					2.8	R				
384	20	1	2010	3	24	55.2	38.89	29.90	R	5	R					3.1	R				
385	20	1	2010	3	48	37.8	39.97	31.31	R	6	R					2.7	R				
386	20	1	2010	3	49	22.6	39.85	40.74	R	26	R					2.7	R				
387	20	1	2010	6	41	29.5	39.53	28.20	R	14	R					2.8	R				
388	20	1	2010	7	50	56.9	39.29	28.17	R	18	R					2.7	R				
389	20	1	2010	8	0	6.8	37.02	28.44	R	16	R					2.7	R				
390	20	1	2010	8	47	34.4	37.62	34.65	R	4	R					2.8	R				
391	20	1	2010	10	23	52.2	38.62	29.33	R	5	R					2.6	R				
392	20	1	2010	10	27	17.6	39.88	33.13	R	9	R					2.3	R				
393	20	1	2010	10	51	11.0	37.26	30.30	R	18	R					2.8	R				
394	20	1	2010	10	54	25.4	39.69	30.81	R	6	R					2.3	R				
395	20	1	2010	11	54	49.8	40.35	28.11	R	6	R					2.4	R				
396	20	1	2010	14	10	17.6	39.33	38.45	R	14	R					3.0	R				
397	20	1	2010	14	34	59.4	36.00	29.17	R	20	R					2.7	R				
398	20	1	2010	14	47	48.2	37.05	38.81	R	5	R					2.9	R				
399	20	1	2010	15	19	20.4	37.22	28.28	R	12	R					2.7	R				
400	20	1	2010	18	52	33.6	41.63	43.09	R	3	R					3.3	R				

TÜRKİYE DEPREM ETKİNLİĞİ (2010 YILI OCAK AYI)

No	Tarih - Date			Zaman - Time			Koordinat - Coordinate			Derinlik - Depth		Magnitüd - Magnitude									
	Gün	Ay	Yıl	Saat	Dak.	San.	Enlem-K	Boylam-D	Ref	Km.	Ref	Ms	Ref	Mb	Ref	Md	Ref	MI	Ref	Mw	Ref
401	20	1	2010	19	59	55.2	36.71	27.28	R	5	R							3.2	R		
402	20	1	2010	20	53	9.1	39.08	29.19	R	5	R					3.2	R				
403	20	1	2010	22	18	2.8	36.68	27.16	R	5	R					2.9	R				
404	20	1	2010	23	6	34.8	35.70	33.62	R	3	R					3.0	R				
405	20	1	2010	23	14	36.2	36.97	28.35	R	5	R					2.8	R				
406	21	1	2010	0	5	16.4	40.56	35.50	R	9	R					2.8	R				
407	21	1	2010	2	53	39.6	37.88	29.09	R	4	R					2.8	R				
408	21	1	2010	3	20	2.0	39.82	30.58	R	10	R					2.9	R				
409	21	1	2010	3	51	55.5	37.64	42.27	R	4	R					3.1	R				
410	21	1	2010	4	9	19.2	37.48	36.15	R	5	R					3.3	R				
411	21	1	2010	5	26	28.6	40.53	29.25	R	5	R					2.3	R				
412	21	1	2010	5	56	36.8	36.87	27.20	R	10	R					2.6	R				
413	21	1	2010	6	5	37.0	39.40	27.50	R	22	R					2.7	R				
414	21	1	2010	6	14	14.0	41.63	25.97	R	5	R					3.0	R	3.0	R		
415	21	1	2010	6	22	19.8	38.47	30.12	R	12	R					2.8	R				
416	21	1	2010	6	26	20.4	37.36	36.97	R	7	R					2.6	R				
417	21	1	2010	7	41	41.6	39.84	26.05	R	5	R							3.3	R		
418	21	1	2010	8	36	59.2	39.65	38.73	R	9	R					2.6	R				
419	21	1	2010	8	58	59.6	40.22	42.08	R	16	R					2.6	R				
420	21	1	2010	9	7	33.2	36.99	29.19	R	9	R					2.5	R				

TÜRKİYE DEPREM ETKİNLİĞİ (2010 YILI OCAK AYI)

No	Tarih - Date			Zaman - Time			Koordinat - Coordinate			Derinlik - Depth		Magnitüd - Magnitude									
	Gün	Ay	Yıl	Saat	Dak.	San.	Enlem-K	Boylam-D	Ref	Km.	Ref	Ms	Ref	Mb	Ref	Md	Ref	MI	Ref	Mw	Ref
421	21	1	2010	9	46	55.3	37.32	28.17	R	20	R					2.5	R				
422	21	1	2010	9	48	7.8	39.27	38.41	R	11	R					3.0	R				
423	21	1	2010	10	4	26.9	39.86	28.89	R	10	R					2.6	R				
424	21	1	2010	10	16	33.7	39.45	36.54	R	6	R					3.0	R				
425	21	1	2010	12	51	39.7	37.53	29.83	R	10	R					2.6	R				
426	21	1	2010	13	42	17.6	37.96	29.34	R	3	R					2.6	R				
427	21	1	2010	13	43	14.0	39.29	38.37	R	18	R					2.4	R				
428	21	1	2010	13	50	21.6	40.30	29.96	R	20	R					2.6	R				
429	21	1	2010	13	57	55.2	39.31	35.01	R	6	R					2.8	R				
430	21	1	2010	14	6	48.2	39.06	39.18	R	25	R					2.4	R				
431	21	1	2010	15	11	56.9	39.20	43.81	R	26	R					2.7	R				
432	21	1	2010	15	51	38.0	38.40	30.13	R	3	R					2.9	R				
433	21	1	2010	16	15	51.7	37.00	27.56	R	5	R					3.1	R				
434	21	1	2010	19	22	29.0	36.60	30.56	R	66	R							3.2	R		
435	21	1	2010	21	17	34.0	36.58	40.87	R	5	R					3.2	R				
436	22	1	2010	0	23	55.6	38.50	25.52	R	4	R					3.0	R				
437	22	1	2010	0	35	29.8	38.68	30.34	R	6	R					3.0	R				
438	22	1	2010	0	46	34.1	38.93	29.97	R	17	R					2.8	R				
439	22	1	2010	4	5	58.3	37.56	27.07	R	5	R					3.0	R				
440	22	1	2010	5	47	30.2	37.62	27.17	R	2	R					3.1	R				

TÜRKİYE DEPREM ETKİNLİĞİ (2010 YILI OCAK AYI)

No	Tarih - Date			Zaman - Time			Koordinat - Coordinate			Derinlik - Depth		Magnitüd - Magnitude									
	Gün	Ay	Yıl	Saat	Dak.	San.	Enlem-K	Boylam-D	Ref	Km.	Ref	Ms	Ref	Mb	Ref	Md	Ref	MI	Ref	Mw	Ref
441	22	1	2010	6	4	17.9	39.36	42.10	R	14	R					2.7	R				
442	22	1	2010	7	0	48.6	40.84	27.47	R	5	R					2.6	R				
443	22	1	2010	7	5	39.6	40.72	27.57	R	13	R					2.6	R				
444	22	1	2010	7	39	56.0	40.43	26.12	R	5	R					3.0	R				
445	22	1	2010	7	57	53.8	38.95	40.29	R	28	R					2.4	R				
446	22	1	2010	8	54	26.9	36.94	34.81	R	6	R					2.2	R				
447	22	1	2010	10	5	37.6	37.50	39.74	R	6	R					2.3	R				
448	22	1	2010	10	5	56.9	39.49	31.23	R	10	R					2.8	R				
449	22	1	2010	11	15	56.3	37.46	35.43	R	5	R					2.6	R				
450	22	1	2010	11	49	46.3	40.75	29.31	R	7	R					2.7	R				
451	22	1	2010	11	57	18.5	37.67	26.81	R	16	R					3.4	R				
452	22	1	2010	12	25	58.2	39.34	25.72	R	7	R					3.2	R				
453	22	1	2010	12	46	59.0	40.81	39.50	R	28	R					2.2	R				
454	22	1	2010	14	8	37.2	41.11	36.17	R	2	R					2.6	R				
455	22	1	2010	14	15	39.2	39.89	30.00	R	11	R					2.5	R				
456	22	1	2010	16	9	3.1	38.39	42.05	R	12	R					3.2	R				
457	22	1	2010	17	48	15.5	39.15	33.15	R	11	R					3.0	R				
458	22	1	2010	19	43	48.1	41.27	40.28	R	5	R					3.0	R				
459	22	1	2010	19	48	6.0	39.00	29.31	R	6	R					2.6	R				
460	22	1	2010	21	10	47.6	41.28	40.25	R	4	R					2.6	R				

TÜRKİYE DEPREM ETKİNLİĞİ (2010 YILI OCAK AYI)

No	Tarih - Date			Zaman - Time			Koordinat - Coordinate			Derinlik - Depth		Magnitüd - Magnitude									
	Gün	Ay	Yıl	Saat	Dak.	San.	Enlem-K	Boylam-D	Ref	Km.	Ref	Ms	Ref	Mb	Ref	Md	Ref	MI	Ref	Mw	Ref
461	23	1	2010	1	22	0.9	37.63	35.59	R	3	R					2.6	R				
462	23	1	2010	1	50	4.5	38.88	26.93	R	10	R					2.8	R				
463	23	1	2010	7	15	4.0	39.96	28.78	R	4	R					3.2	R				
464	23	1	2010	8	36	59.9	35.79	26.17	R	5	R							3.9	R		
465	23	1	2010	8	59	58.1	38.40	29.95	R	6	R					2.7	R				
466	23	1	2010	9	17	9.5	40.99	40.64	R	8	R					2.7	R				
467	23	1	2010	11	19	38.7	39.81	38.74	R	6	R					2.5	R				
468	23	1	2010	12	52	28.2	38.48	29.71	R	5	R					2.6	R				
469	23	1	2010	13	10	42.4	37.45	28.49	R	14	R					2.6	R				
470	23	1	2010	13	32	14.4	39.52	41.24	R	9	R					2.7	R				
471	23	1	2010	17	7	6.6	38.06	27.04	R	5	R					2.5	R				
472	23	1	2010	17	33	38.8	40.85	35.23	R	8	R					2.8	R				
473	23	1	2010	17	42	38.5	40.53	42.19	R	12	R					2.6	R				
474	23	1	2010	17	44	8.2	37.18	27.67	R	26	R					3.1	R				
475	23	1	2010	18	10	57.4	38.78	26.89	R	12	R					2.8	R				
476	23	1	2010	18	53	45.7	38.64	41.45	R	8	R					2.8	R				
477	23	1	2010	19	0	37.2	38.57	43.24	R	10	R					3.1	R				
478	23	1	2010	19	24	11.6	38.23	27.14	R	8	R					3.3	R				
479	23	1	2010	20	48	10.9	39.91	39.98	R	5	R					2.5	R				
480	23	1	2010	22	35	11.6	37.70	26.79	R	21	R					2.7	R				

TÜRKİYE DEPREM ETKİNLİĞİ (2010 YILI OCAK AYI)

No	Tarih - Date			Zaman - Time			Koordinat - Coordinate			Derinlik - Depth		Magnitüd - Magnitude									
	Gün	Ay	Yıl	Saat	Dak.	San.	Enlem-K	Boylam-D	Ref	Km.	Ref	Ms	Ref	Mb	Ref	Md	Ref	MI	Ref	Mw	Ref
481	23	1	2010	23	52	44.0	36.41	35.57	R	3	R					3.3	R				
482	24	1	2010	0	6	56.7	37.32	27.00	R	18	R					2.8	R				
483	24	1	2010	1	6	49.1	37.61	36.54	R	5	R					2.4	R				
484	24	1	2010	2	18	16.8	37.22	26.94	R	15	R					2.9	R				
485	24	1	2010	2	36	45.7	37.01	29.40	R	21	R					2.6	R				
486	24	1	2010	4	8	20.4	38.89	39.55	R	7	R					2.8	R				
487	24	1	2010	4	52	40.0	37.24	28.06	R	20	R					2.9	R				
488	24	1	2010	6	44	19.6	39.96	38.78	R	15	R					3.1	R				
489	24	1	2010	7	14	36.4	37.15	28.59	R	15	R					2.8	R				
490	24	1	2010	11	45	10.0	37.99	26.73	R	5	R					3.1	R				
491	24	1	2010	15	28	25.2	40.37	27.26	R	11	R					2.8	R				
492	24	1	2010	15	39	23.1	39.29	38.56	R	10	R					2.7	R				
493	24	1	2010	18	5	41.8	39.89	35.19	R	5	R					2.4	R				
494	24	1	2010	18	54	6.9	36.11	27.77	R	16	R					3.4	R				
495	24	1	2010	18	57	49.8	37.17	28.87	R	14	R					2.9	R				
496	24	1	2010	19	54	56.1	38.92	39.55	R	2	R					3.5	R				
497	24	1	2010	19	59	53.7	37.55	35.60	R	2	R							3.6	R		
498	24	1	2010	21	57	56.5	40.07	38.17	R	8	R					3.4	R				
499	25	1	2010	1	10	17.8	38.85	26.92	R	13	R			4.0	N			3.9	R		
500	25	1	2010	3	44	42.8	40.38	27.23	R	10	R					2.5	R				

TÜRKİYE DEPREM ETKİNLİĞİ (2010 YILI OCAK AYI)

No	Tarih - Date			Zaman - Time			Koordinat - Coordinate			Derinlik - Depth		Magnitüd - Magnitude									
	Gün	Ay	Yıl	Saat	Dak.	San.	Enlem-K	Boylam-D	Ref	Km.	Ref	Ms	Ref	Mb	Ref	Md	Ref	MI	Ref	Mw	Ref
501	25	1	2010	7	41	1.6	40.63	29.03	R	10	R					2.0	R				
502	25	1	2010	8	30	6.6	40.63	29.02	R	15	R					2.3	R				
503	25	1	2010	8	33	6.4	39.70	25.42	R	5	R					2.9	R				
504	25	1	2010	11	58	37.4	41.13	34.21	R	5	R					2.9	R				
505	25	1	2010	13	26	45.5	41.33	35.80	R	5	R					2.8	R				
506	25	1	2010	14	5	34.0	39.90	33.06	R	2	R					2.5	R				
507	25	1	2010	15	33	51.5	40.64	29.02	R	5	R					2.8	R				
508	25	1	2010	19	1	53.9	40.76	27.48	R	25	R					2.6	R				
509	25	1	2010	19	45	20.3	38.63	30.60	R	14	R					2.9	R				
510	25	1	2010	20	5	46.4	40.26	27.04	R	25	R					2.5	R				
511	25	1	2010	20	28	53.8	40.64	29.06	R	5	R					2.4	R				
512	25	1	2010	21	2	25.9	37.38	29.51	R	11	R					2.8	R				
513	25	1	2010	22	31	37.3	38.82	26.79	R	9	R					2.8	R				
514	25	1	2010	23	38	58.7	40.63	29.07	R	2	R					1.8	R				
515	26	1	2010	0	34	51.6	37.22	28.37	R	5	R					2.7	R				
516	26	1	2010	2	22	57.2	40.17	33.35	R	12	R					2.8	R				
517	26	1	2010	2	25	17.1	38.91	29.94	R	10	R					2.6	R				
518	26	1	2010	5	12	50.4	37.21	29.02	R	3	R					3.0	R				
519	26	1	2010	5	38	34.1	39.97	39.74	R	5	R					3.3	R				
520	26	1	2010	6	30	34.2	37.10	29.08	R	20	R					2.9	R				

TÜRKİYE DEPREM ETKİNLİĞİ (2010 YILI OCAK AYI)

No	Tarih - Date			Zaman - Time			Koordinat - Coordinate			Derinlik - Depth		Magnitüd - Magnitude									
	Gün	Ay	Yıl	Saat	Dak.	San.	Enlem-K	Boylam-D	Ref	Km.	Ref	Ms	Ref	Mb	Ref	Md	Ref	MI	Ref	Mw	Ref
521	26	1	2010	9	19	3.6	37.99	30.05	R	5	R					2.8	R				
522	26	1	2010	11	13	2.5	37.44	35.45	R	14	R					2.7	R				
523	26	1	2010	11	24	37.1	39.75	26.54	R	5	R					3.0	R				
524	26	1	2010	12	22	17.4	38.30	30.49	R	12	R					2.7	R				
525	26	1	2010	12	53	21.0	37.69	30.38	R	19	R					2.8	R				
526	26	1	2010	13	8	47.4	37.33	38.76	R	5	R					2.7	R				
527	26	1	2010	13	24	41.2	38.13	32.39	R	41	R					2.7	R				
528	26	1	2010	13	31	14.1	35.00	26.79	N	10	N			4.5	N			4.3	R		
529	26	1	2010	13	44	38.5	34.85	27.29	R	14	R							3.3	R		
530	26	1	2010	13	45	28.0	38.12	34.09	R	24	R					2.6	R				
531	26	1	2010	14	14	20.5	39.11	32.19	R	24	R					2.8	R				
532	26	1	2010	14	25	43.8	39.92	28.91	R	9	R					2.6	R				
533	26	1	2010	15	40	4.5	39.10	36.31	R	8	R					2.9	R				
534	26	1	2010	15	55	0.2	37.62	29.27	R	9	R					2.5	R				
535	26	1	2010	16	38	16.4	37.61	38.41	R	5	R					2.9	R				
536	26	1	2010	17	4	0.0	35.08	26.80	R	8	R					3.7	R				
537	26	1	2010	18	11	50.0	37.03	29.32	R	6	R					2.5	R				
538	26	1	2010	18	21	14.8	39.59	25.98	R	7	R					3.0	R				
539	26	1	2010	19	16	14.4	37.11	28.52	R	6	R					2.5	R				
540	26	1	2010	19	23	11.4	37.69	30.44	R	5	R					3.1	R				

TÜRKİYE DEPREM ETKİNLİĞİ (2010 YILI OCAK AYI)

No	Tarih - Date			Zaman - Time			Koordinat - Coordinate			Derinlik - Depth		Magnitüd - Magnitude									
	Gün	Ay	Yıl	Saat	Dak.	San.	Enlem-K	Boylam-D	Ref	Km.	Ref	Ms	Ref	Mb	Ref	Md	Ref	MI	Ref	Mw	Ref
541	26	1	2010	19	29	57.0	38.14	26.82	R	2	R					3.1	R				
542	26	1	2010	19	44	17.4	37.02	27.72	R	5	R					2.9	R				
543	26	1	2010	19	58	7.6	40.85	28.78	R	5	R					2.1	R				
544	26	1	2010	21	31	36.9	40.15	31.71	R	9	R					2.9	R				
545	26	1	2010	22	2	46.7	40.28	29.44	R	10	R					2.6	R				
546	26	1	2010	23	58	27.7	39.45	33.05	R	4	R					2.8	R				
547	27	1	2010	0	16	44.6	40.74	29.15	R	6	R					2.2	R				
548	27	1	2010	1	17	34.8	39.98	39.84	R	6	R					2.8	R				
549	27	1	2010	1	34	53.9	37.71	30.59	R	17	R					2.4	R				
550	27	1	2010	2	23	37.9	37.05	42.01	R	18	R					3.1	R				
551	27	1	2010	2	38	3.2	34.77	25.59	R	11	R					3.2	R				
552	27	1	2010	3	30	35.8	38.83	27.01	R	18	R					2.8	R				
553	27	1	2010	4	1	15.9	39.49	38.60	R	20	R					2.5	R				
554	27	1	2010	4	27	12.7	40.89	30.24	R	6	R					2.8	R				
555	27	1	2010	5	37	27.6	39.86	38.87	R	24	R					2.6	R				
556	27	1	2010	6	25	59.4	40.66	28.99	R	6	R							2.7	R		
557	27	1	2010	6	43	6.4	40.66	35.26	R	3	R							3.3	R		
558	27	1	2010	7	1	23.1	39.49	27.85	R	5	R							2.9	R		
559	27	1	2010	8	27	47.2	36.99	35.56	R	14	R					2.1	R				
560	27	1	2010	9	6	55.8	38.19	27.19	R	6	R					1.6	R				

TÜRKİYE DEPREM ETKİNLİĞİ (2010 YILI OCAK AYI)

No	Tarih - Date			Zaman - Time			Koordinat - Coordinate			Derinlik - Depth		Magnitüd - Magnitude									
	Gün	Ay	Yıl	Saat	Dak.	San.	Enlem-K	Boylam-D	Ref	Km.	Ref	Ms	Ref	Mb	Ref	Md	Ref	MI	Ref	Mw	Ref
561	27	1	2010	9	8	23.9	38.96	27.29	R	6	R					2.6	R				
562	27	1	2010	10	13	3.7	37.03	34.28	R	4	R					2.4	R				
563	27	1	2010	10	19	1.1	37.58	35.59	R	8	R					2.8	R				
564	27	1	2010	10	54	54.6	38.57	27.26	R	5	R					2.5	R				
565	27	1	2010	12	16	59.0	41.14	35.93	R	6	R					2.8	R				
566	27	1	2010	13	9	28.5	38.35	27.39	R	10	R					2.3	R				
567	27	1	2010	13	35	17.8	38.98	28.09	R	5	R					3.1	R				
568	27	1	2010	14	10	21.7	41.65	36.00	R	9	R					2.6	R				
569	27	1	2010	14	11	58.2	40.63	26.32	R	16	R					2.4	R				
570	27	1	2010	16	12	20.3	39.08	28.00	R	6	R					2.7	R				
571	27	1	2010	19	19	52.6	40.56	37.24	R	5	R					2.9	R				
572	27	1	2010	20	52	44.8	39.43	29.00	R	6	R					2.7	R				
573	27	1	2010	21	40	1.8	37.69	36.52	R	6	R					2.6	R				
574	27	1	2010	22	17	47.9	38.19	28.70	R	8	R					2.8	R				
575	27	1	2010	22	39	5.3	37.65	35.55	R	8	R					2.4	R				
576	27	1	2010	22	51	2.8	37.56	35.57	R	15	R					2.3	R				
577	27	1	2010	23	2	20.3	39.63	25.78	R	9	R					2.8	R				
578	28	1	2010	0	26	29.7	38.18	27.16	R	11	R					2.3	R				
579	28	1	2010	0	48	30.0	39.79	25.42	R	5	R					3.2	R				
580	28	1	2010	0	57	15.3	38.18	28.84	R	4	R					2.9	R				

TÜRKİYE DEPREM ETKİNLİĞİ (2010 YILI OCAK AYI)

No	Tarih - Date			Zaman - Time			Koordinat - Coordinate			Derinlik - Depth		Magnitüd - Magnitude									
	Gün	Ay	Yıl	Saat	Dak.	San.	Enlem-K	Boylam-D	Ref	Km.	Ref	Ms	Ref	Mb	Ref	Md	Ref	MI	Ref	Mw	Ref
581	28	1	2010	0	59	43.6	38.19	28.79	R	8	R					3.0	R				
582	28	1	2010	1	1	27.4	38.18	28.74	R	17	R					2.8	R				
583	28	1	2010	1	3	10.7	38.19	28.79	R	2	R					2.6	R				
584	28	1	2010	1	25	30.7	38.17	28.81	R	5	R					3.1	R				
585	28	1	2010	1	28	19.8	38.18	28.79	R	8	R					2.7	R				
586	28	1	2010	1	30	59.6	38.20	28.66	R	13	R					2.5	R				
587	28	1	2010	2	36	12.1	35.09	25.38	R	19	R							3.7	R		
588	28	1	2010	3	5	8.7	40.82	27.57	R	8	R					2.9	R				
589	28	1	2010	3	6	0.6	38.84	44.53	R	16	R					3.1	R				
590	28	1	2010	4	0	42.1	39.55	43.91	R	5	R					3.0	R				
591	28	1	2010	4	9	52.0	37.55	35.97	R	21	R					2.3	R				
592	28	1	2010	4	36	11.4	40.93	34.22	R	16	R					2.9	R				
593	28	1	2010	4	39	36.9	38.08	28.85	R	7	R					2.8	R				
594	28	1	2010	4	41	23.8	38.11	28.81	R	5	R					3.0	R				
595	28	1	2010	4	57	43.5	38.10	28.86	R	6	R					2.8	R				
596	28	1	2010	5	1	7.9	41.54	26.23	R	2	R					2.8	R				
597	28	1	2010	5	18	11.5	38.07	28.85	R	9	R					3.0	R				
598	28	1	2010	5	22	28.1	39.44	40.35	R	4	R					2.9	R				
599	28	1	2010	5	43	49.5	40.39	29.75	R	8	R					2.7	R				
600	28	1	2010	7	49	28.8	38.67	43.33	R	5	R					3.4	R				

TÜRKİYE DEPREM ETKİNLİĞİ (2010 YILI OCAK AYI)

No	Tarih - Date			Zaman - Time			Koordinat - Coordinate			Derinlik - Depth		Magnitüd - Magnitude									
	Gün	Ay	Yıl	Saat	Dak.	San.	Enlem-K	Boylam-D	Ref	Km.	Ref	Ms	Ref	Mb	Ref	Md	Ref	MI	Ref	Mw	Ref
601	28	1	2010	9	30	11.5	39.92	26.06	R	8	R					3.0	R				
602	28	1	2010	11	30	57.7	36.33	29.43	R	5	R					2.5	R				
603	28	1	2010	11	31	52.5	39.04	42.06	R	5	R					3.1	R				
604	28	1	2010	11	51	28.9	39.49	26.07	R	10	R					2.7	R				
605	28	1	2010	12	19	18.2	36.60	35.83	R	5	R					2.6	R				
606	28	1	2010	13	5	22.6	35.04	25.69	R	19	R					4.1	R				
607	28	1	2010	13	6	24.9	38.75	28.27	R	28	R					2.4	R				
608	28	1	2010	13	28	2.5	34.37	28.52	R	5	R					3.8	R				
609	28	1	2010	13	41	24.4	38.64	43.15	R	9	R					2.8	R				
610	28	1	2010	14	45	24.7	38.06	38.73	R	31	R					3.3	R				
611	28	1	2010	16	22	22.0	38.85	29.56	R	5	R					2.4	R				
612	28	1	2010	16	44	5.8	42.21	26.39	R	9	R					3.2	R				
613	28	1	2010	16	47	41.6	42.26	26.05	R	7	R					3.4	R				
614	28	1	2010	17	28	41.0	41.72	26.06	R	5	R					2.8	R				
615	28	1	2010	17	43	0.7	38.56	25.12	R	3	R					3.2	R				
616	28	1	2010	18	41	13.0	38.66	43.33	R	23	R					2.9	R				
617	28	1	2010	18	46	22.3	39.97	38.65	R	6	R					2.7	R				
618	28	1	2010	18	48	9.1	39.95	38.89	R	6	R					2.7	R				
619	28	1	2010	19	30	24.2	39.95	39.22	R	5	R					2.5	R				
620	28	1	2010	19	39	20.2	39.95	39.19	R	15	R					2.6	R				

TÜRKİYE DEPREM ETKİNLİĞİ (2010 YILI OCAK AYI)

No	Tarih - Date			Zaman - Time			Koordinat - Coordinate			Derinlik - Depth		Magnitüd - Magnitude									
	Gün	Ay	Yıl	Saat	Dak.	San.	Enlem-K	Boylam-D	Ref	Km.	Ref	Ms	Ref	Mb	Ref	Md	Ref	MI	Ref	Mw	Ref
621	28	1	2010	19	41	56.8	39.86	39.44	R	2	R					2.5	R				
622	28	1	2010	20	56	16.0	37.96	27.27	R	9	R					2.3	R				
623	28	1	2010	20	58	19.2	34.44	35.94	R	32	R							3.2	R		
624	28	1	2010	21	21	33.1	37.95	27.27	R	5	R					3.1	R	2.9	R		
625	28	1	2010	22	17	38.2	39.98	39.26	R	6	R					2.5	R				
626	28	1	2010	22	36	55.1	36.90	29.90	R	14	R					2.7	R				
627	28	1	2010	23	48	21.7	39.23	29.38	R	6	R					2.2	R				
628	28	1	2010	23	59	33.4	36.61	31.81	R	18	R					3.1	R				
629	29	1	2010	0	4	54.3	39.04	29.83	R	6	R					2.7	R				
630	29	1	2010	0	12	49.7	40.62	29.00	R	6	R					2.5	R				
631	29	1	2010	0	16	24.0	38.67	43.30	R	6	R					3.0	R				
632	29	1	2010	1	39	41.7	39.74	26.36	R	8	R					2.9	R				
633	29	1	2010	1	43	14.7	39.89	41.36	R	5	R					3.2	R				
634	29	1	2010	1	48	31.6	39.44	32.36	R	5	R					2.7	R				
635	29	1	2010	1	57	23.3	39.90	41.37	R	6	R					3.0	R				
636	29	1	2010	2	0	24.3	37.27	27.13	R	5	R					2.6	R				
637	29	1	2010	2	1	1.2	36.81	27.62	R	5	R					2.9	R				
638	29	1	2010	2	15	50.1	37.58	31.43	R	5	R					2.9	R				
639	29	1	2010	2	20	38.0	40.26	32.15	R	4	R					2.8	R				
640	29	1	2010	3	5	32.1	38.72	30.32	R	8	R					2.6	R				

TÜRKİYE DEPREM ETKİNLİĞİ (2010 YILI OCAK AYI)

No	Tarih - Date			Zaman - Time			Koordinat - Coordinate			Derinlik - Depth		Magnitüd - Magnitude									
	Gün	Ay	Yıl	Saat	Dak.	San.	Enlem-K	Boylam-D	Ref	Km.	Ref	Ms	Ref	Mb	Ref	Md	Ref	MI	Ref	Mw	Ref
641	29	1	2010	3	16	53.6	37.90	27.23	R	5	R					2.9	R				
642	29	1	2010	3	19	46.3	42.11	26.24	R	5	R					3.1	R				
643	29	1	2010	3	50	46.7	39.71	25.56	R	4	R					2.7	R				
644	29	1	2010	4	14	23.6	37.32	43.61	R	2	R					2.7	R				
645	29	1	2010	5	4	12.6	37.18	35.94	R	10	R					2.9	R				
646	29	1	2010	6	23	39.3	38.72	27.91	R	18	R					2.6	R				
647	29	1	2010	6	46	0.8	41.72	26.70	R	5	R					3.2	R				
648	29	1	2010	8	7	36.4	37.87	31.29	R	6	R					2.4	R				
649	29	1	2010	9	36	14.5	36.74	39.24	R	20	R					2.6	R				
650	29	1	2010	9	52	51.3	40.28	31.84	R	12	R					2.6	R				
651	29	1	2010	10	19	22.9	36.96	31.24	R	14	R					2.6	R				
652	29	1	2010	12	25	47.8	35.47	26.92	R	9	R					3.6	R				
653	29	1	2010	13	44	15.6	40.42	27.10	R	3	R					2.4	R				
654	29	1	2010	14	31	19.5	37.29	29.80	R	7	R					2.9	R				
655	29	1	2010	16	38	8.8	39.50	28.91	R	5	R					3.1	R				
656	29	1	2010	18	17	44.4	38.39	31.82	R	9	R					2.8	R				
657	29	1	2010	18	48	20.6	39.82	26.04	R	14	R					2.7	R				
658	29	1	2010	19	33	12.2	40.33	42.61	R	8	R					2.9	R				
659	29	1	2010	23	15	7.6	38.67	43.28	R	9	R					3.0	R				
660	30	1	2010	1	4	47.7	38.86	27.85	R	2	R					3.3	R				

TÜRKİYE DEPREM ETKİNLİĞİ (2010 YILI OCAK AYI)

No	Tarih - Date			Zaman - Time			Koordinat - Coordinate			Derinlik - Depth		Magnitüd - Magnitude									
	Gün	Ay	Yıl	Saat	Dak.	San.	Enlem-K	Boylam-D	Ref	Km.	Ref	Ms	Ref	Mb	Ref	Md	Ref	MI	Ref	Mw	Ref
661	30	1	2010	2	12	0.6	38.07	28.95	R	5	R					2.6	R				
662	30	1	2010	3	25	3.2	40.88	29.32	R	5	R					2.7	R				
663	30	1	2010	6	30	38.5	39.70	38.81	R	8	R					2.2	R				
664	30	1	2010	6	39	37.2	39.35	26.35	R	15	R							3.0	R		
665	30	1	2010	10	5	22.8	38.26	27.88	R	28	R					2.5	R				
666	30	1	2010	12	28	10.4	39.18	28.91	R	10	R					3.0	R				
667	30	1	2010	14	0	18.3	39.78	26.76	R	2	R					2.8	R				
668	30	1	2010	14	48	30.2	38.01	28.43	R	6	R					2.6	R				
669	30	1	2010	17	26	52.4	39.92	39.20	R	20	R					2.7	R				
670	30	1	2010	17	42	16.9	38.59	26.59	R	12	R					2.9	R				
671	30	1	2010	18	47	57.7	38.18	25.58	R	7	R					3.3	R	3.3	R		
672	30	1	2010	19	5	31.3	38.40	25.53	R	5	R					3.2	R				
673	30	1	2010	19	49	28.3	38.49	42.90	R	7	R					3.1	R				
674	30	1	2010	20	3	9.1	39.06	25.51	R	5	R					3.1	R				
675	30	1	2010	21	3	27.0	39.18	27.33	R	14	R					2.7	R				
676	30	1	2010	22	48	24.2	37.94	27.09	R	6	R					2.6	R				
677	31	1	2010	0	4	31.0	40.05	42.41	R	5	R					3.0	R				
678	31	1	2010	0	31	44.1	40.22	42.05	R	5	R					3.4	R				
679	31	1	2010	0	51	1.4	40.18	25.44	R	7	R					2.8	R				
680	31	1	2010	4	18	11.6	36.96	29.34	R	7	R							3.7	R		

TÜRKİYE DEPREM ETKİNLİĞİ (2010 YILI OCAK AYI)

No	Tarih - Date			Zaman - Time			Koordinat - Coordinate			Derinlik - Depth		Magnitüd - Magnitude									
	Gün	Ay	Yıl	Saat	Dak.	San.	Enlem-K	Boylam-D	Ref	Km.	Ref	Ms	Ref	Mb	Ref	Md	Ref	MI	Ref	Mw	Ref
681	31	1	2010	4	42	13.0	39.86	26.80	R	5	R					2.9	R				
682	31	1	2010	5	20	54.8	37.11	28.29	R	5	R					2.6	R				
683	31	1	2010	6	17	55.3	36.27	30.30	R	5	R					3.1	R				
684	31	1	2010	6	59	46.4	38.36	24.93	R	5	R					3.5	R				
685	31	1	2010	8	18	26.4	37.58	35.89	R	12	R					2.9	R				
686	31	1	2010	8	38	57.3	40.84	28.81	R	8	R					2.5	R				
687	31	1	2010	8	46	9.9	37.93	27.57	R	5	R					2.9	R				
688	31	1	2010	15	23	40.3	41.66	40.81	R	5	R					3.3	R				
689	31	1	2010	17	49	47.2	39.70	27.57	R	8	R							3.6	R		
690	31	1	2010	17	58	37.0	39.26	41.78	R	8	R					3.1	R				
691	31	1	2010	18	13	22.4	40.53	34.48	R	5	R					3.3	R				
692	31	1	2010	18	52	31.5	38.02	37.68	R	6	R					2.7	R				
693	31	1	2010	20	36	36.5	40.53	25.70	R	5	R					3.3	R	3.2	R		
694	31	1	2010	20	50	18.6	37.31	28.17	R	7	R					2.8	R				
695	31	1	2010	22	30	24.9	38.27	29.81	R	7	R					3.0	R				
696	31	1	2010	22	47	45.2	38.27	28.28	R	6	R					2.7	R				
697	31	1	2010	23	3	57.9	38.98	29.86	R	6	R					2.7	R				
698	31	1	2010	23	13	3.7	38.97	29.83	R	5	R					2.7	R				