



Kandilli Rasathanesi Ve Deprem Araştırma Enstitüsü

ULUSAL DEPREM İZLEME MERKEZİ



*2010 NİSAN AYI
BÜLTENİ*

*YIL: 7 - SAYI: 76
İSTANBUL*

Hazırlayan ve Katkıda Bulunanlar

D. Kalafat

K. Kekovalı

K. Kılıç

Y. Güneş

Z. Öğütcü

M. Kara

M. Yilmazer

M. Suvarıklı

E. Görgün

M. Çomoğlu

A. Küsmezer

F. Bekler

P. Deniz

A. Berberoğlu

M. Berberoğlu

S. Poyraz

D. Kepekçi

R. Polat

M.F. Akkoyunlu

M.D. Cambaz

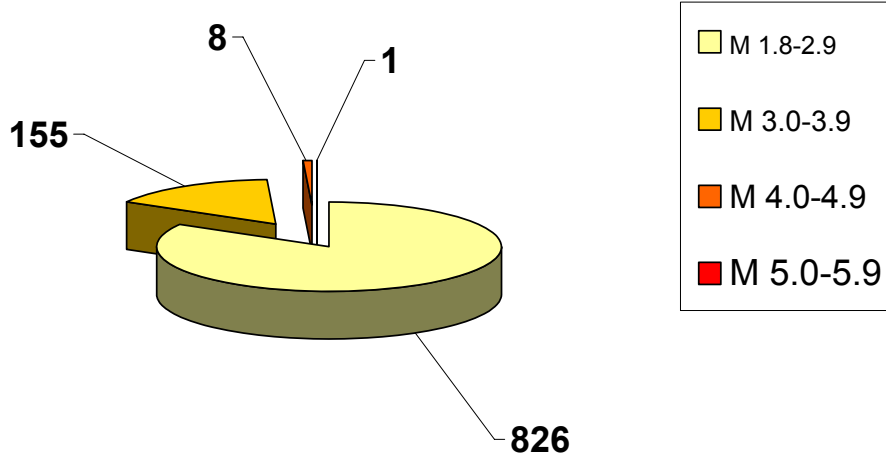
Ö. Çok

M. Özer

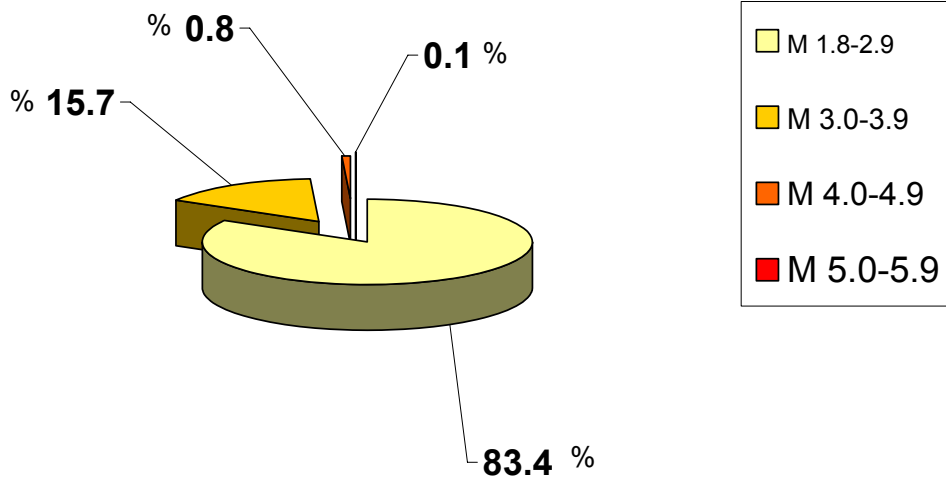
2010 yılı Nisan ayında meydana gelen depremlerin
istatistiksel dağılımı

MAGNİTÜD ARALIĞI	TOPLAM
1.8-2.9	826
3.0-3.9	155
4.0-4.9	8
5.0-5.9	1
6.0-6.9	—
7.0-7.9	—
TOPLAM	990

2010 NISAN AYI DEPREMLERİNİN İSTATİSTİKSEL DAĞILIMI
(Toplam: 990 Adet)



2010 NISAN AYI DEPREMLERİNİN İSTATİSTİKSEL DAĞILIMI (%)



DEĞERLENDİRME

Nisan ayında toplam 990 depremin çözümlü yapılmıştır. Büyüklüğü 4.0 ve üzerinde olan deprem sayısı 8 adettir. Toplam meydana gelen depremlerin % 83.4 oranını büyüklükleri $M=1.8-2.9$ arasındaki depremler oluşturmaktadır.

Nisan ayındaki en önemli depremler ;

Tarih			Zaman		Koordinat		Derinlik	Magnitüd	Yer
Gün	Ay	Yıl	Saat	Dak.	Enlem-K	Boylam-D	Km.	M	
24	4	2010	15	01	34.45	26.01	34	5.3	AKDENİZ
2	4	2010	07	37	40.55	34.99	8	4.5	ÇORUM
26	4	2010	10	26	34.95	26.35	10	4.4	AKDENİZ
29	4	2010	10	32	35.72	27.54	10	4.4	AKDENİZ
28	4	2010	16	35	36.32	27.66	42	4.4	AKDENİZ
9	4	2010	07	09	35.62	29.44	12	4.2	AKDENİZ
13	4	2010	15	18	36.20	27.48	10	4.2	AKDENİZ
12	4	2010	02	43	42.56	43.44	10	4.1	GÜRCİSTAN
2	4	2010	01	05	35.92	31.05	43	4.0	AKDENİZ

Ayrıca, Oniki Adalar bölgesinde, Akdeniz, Gökova Körfezi-Ören-Milas-Yerkesik-Yatağan-Muğla, Simav-Kütahya, Çameli-Denizli, Sisam Adası civarı-Ege Denizi, Hilvan-Şanlıurfa, Kemaliye-Erzincan, ve Çorum'da meydana gelen deprem etkinlikleri dikkat çekmektedir. Doğu Anadolu Fay Zonu boyunca ise İskenderun-Hatay, Osmaniye, Kozan-Adana, Gökdere-Palu-Sivrice-Elazığ'da deprem etkinlikleri gözlenmiştir.

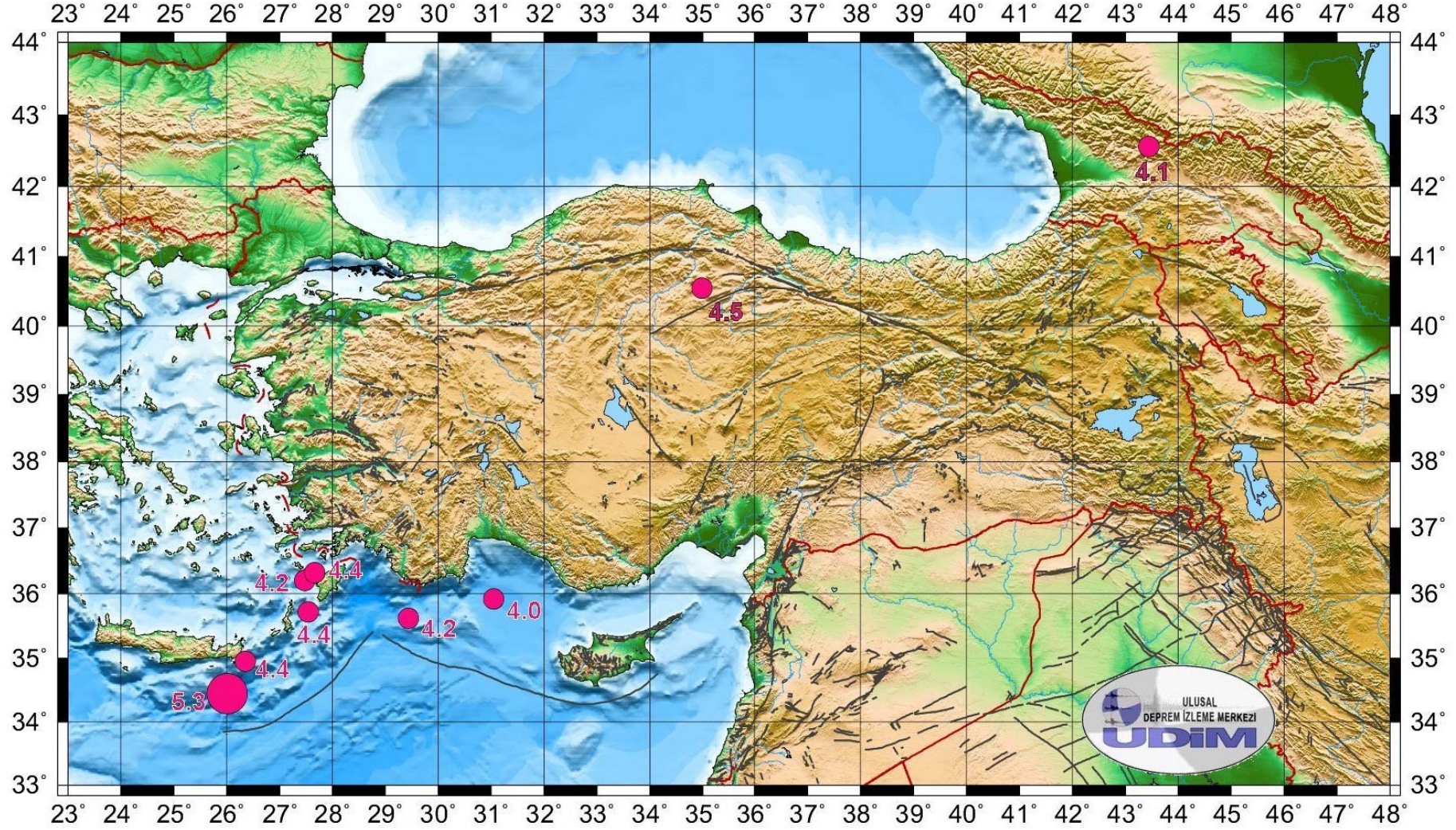
100 adet geniş bantlı (Broad Band) istasyonun Nisan ayı içerisindeki çalışma performansları % 88 dir.

Bu ay içerisinde 10 adet geniş bantlı (Broad Band) deprem istasyonu verimsiz olmuştur.

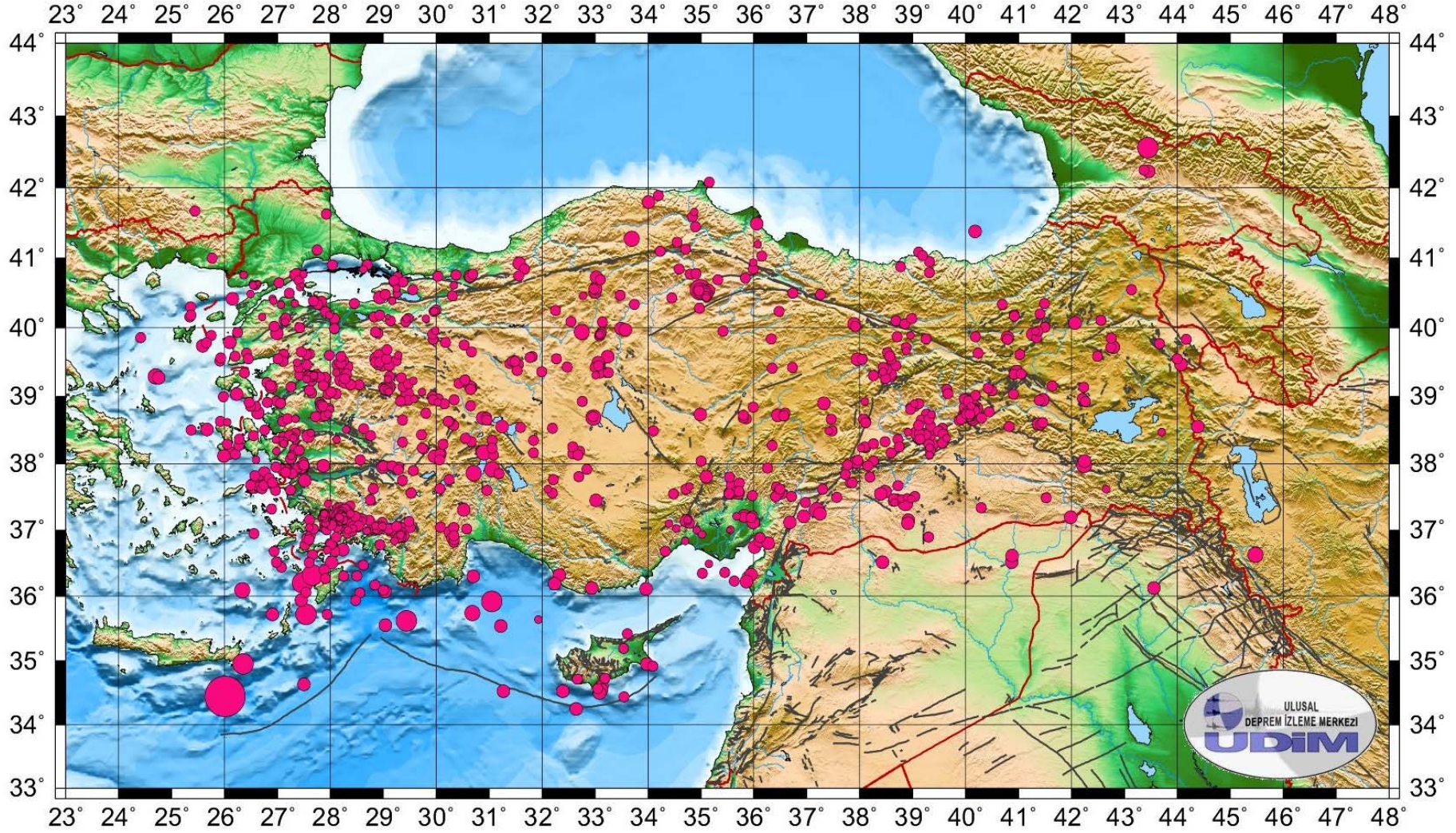
22 adet kısa periyotlu (SP) istasyonun Nisan ayı içerisindeki çalışma performansları % 86 olup, Kaman (KAMT) ve Tokat (TOKT) kısa periyot deprem istasyonları verimsiz olmuştur.

Nisan ayı itibarıyla deprem istasyonlarının ve *sismik ağın ortalama verimlilik performansı % 88* olmuştur.

TÜRKİYE VE YAKIN ÇEVRESİNDE M ≥ 4.0 OLAN DEPREMLER (NİSAN 2010)



TÜRKİYE VE YAKIN ÇEVRESİ DEPREM ETKİNLİĞİ (NİSAN 2010) Toplam: 990 Adet



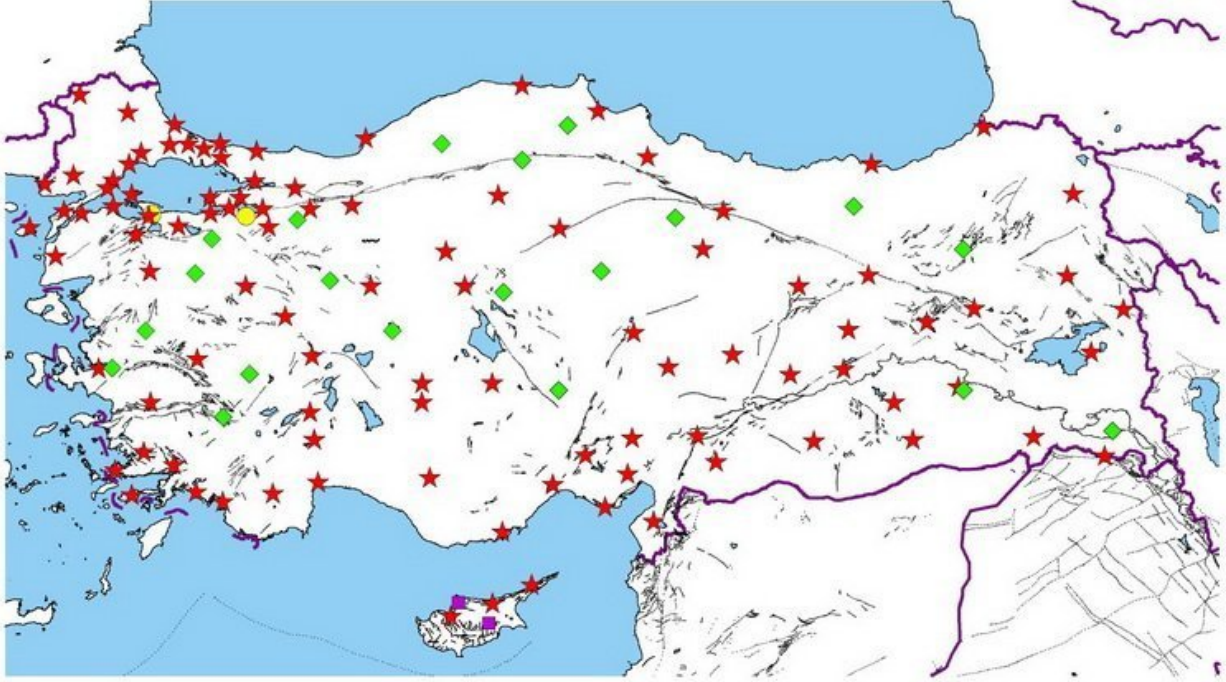
NİSAN 2010

İSTASYON VERİMLİLİK

TABLoları

B.Ü.
KANDİLLİ RASATHANESİ VE DEPREM ARAŞTIRMA ENSTİTÜSÜ
ULUSAL DEPREM İZLEME MERKEZİ
DEPREM İSTASYONLARI

Nisan 2010
Toplam: 124 Adet



★ GENİŞ BAND

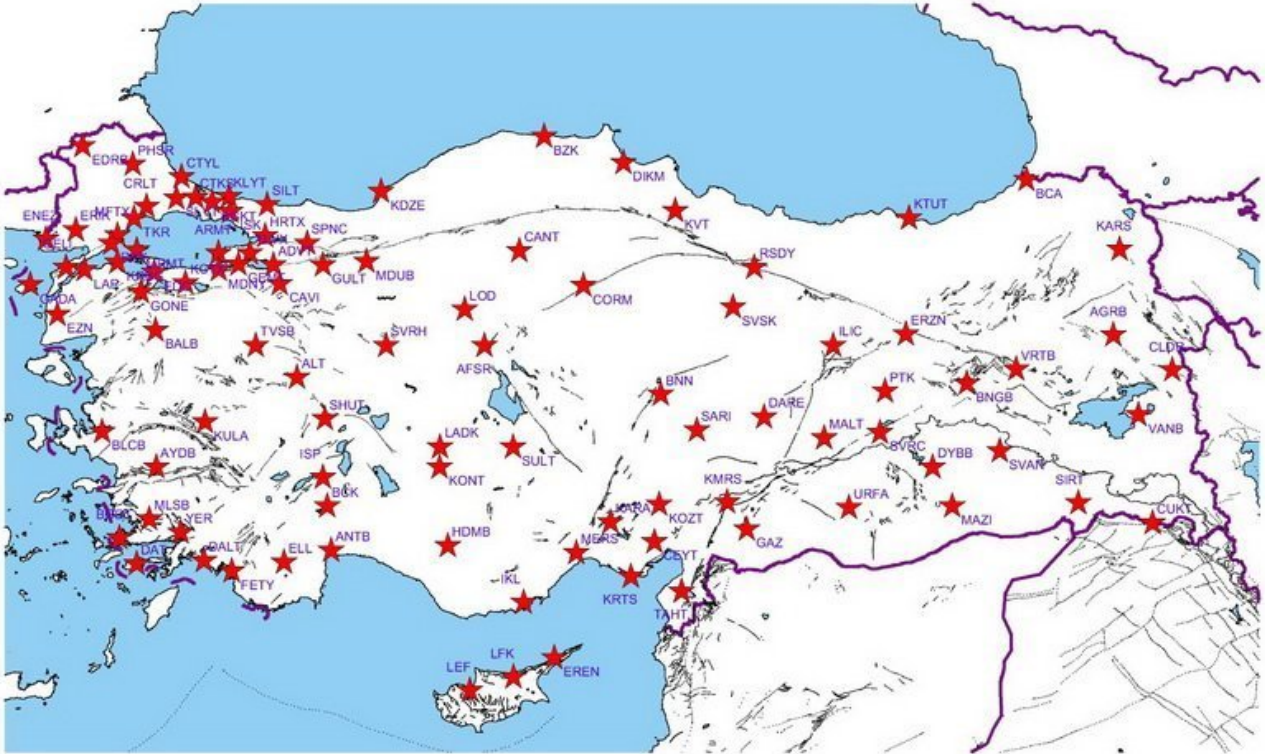
◆ KISA PERİYOT

● TELEMETRİ KISA PERİYOT

■ İVME ÖLÇER

GENİŞ BANTLI (BROADBAND) DEPREM İSTASYONLARI

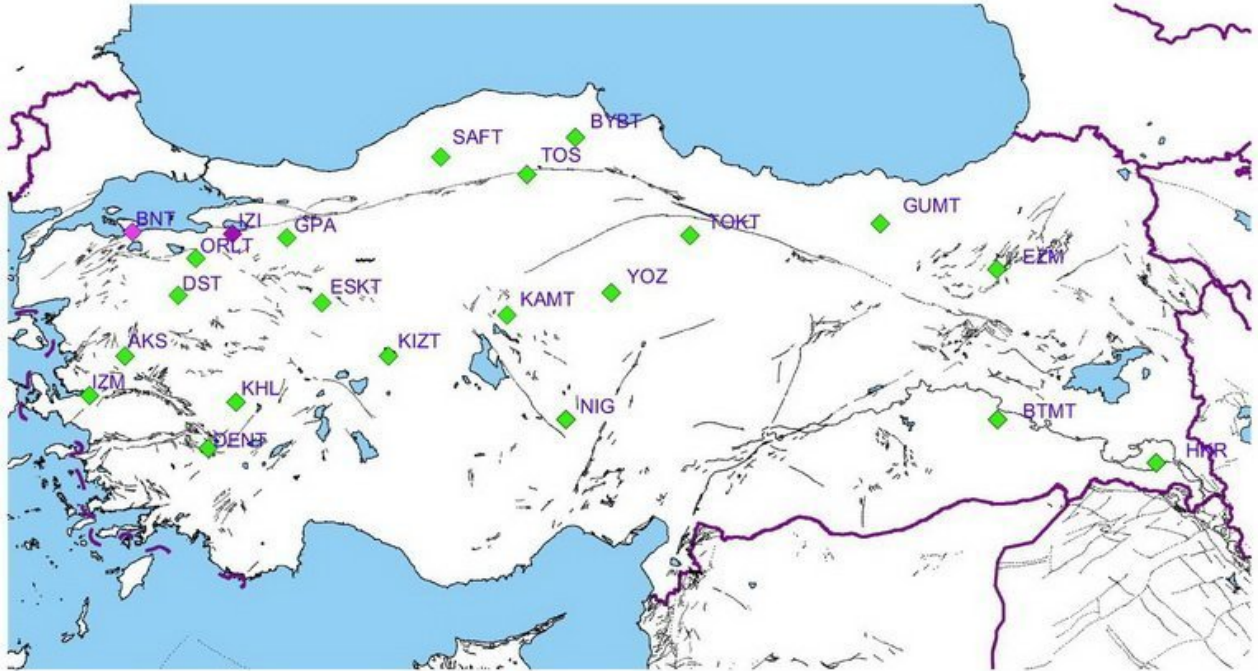
Nisan 2010
100 Adet



Adet	Yöntem	Kod	(+)adet	(-)adet	TOPLAM GÜN	(+)%	(-)%	(+)%	(-)%
1	1	ADVT	30	0	30	100	0		
2	2	AFSR	30	0	30	100	0		
3	3	AGRB	30	0	30	100	0		
4	4	ALT	30	0	30	100	0		
5	5	ANTB	30	0	30	100	0		
6	6	ARMT	30	0	30	100	0		
7	7	AYDB	30	0	30	100	0		
8	8	BALB	30	0	30	100	0		
9	9	BCA	30	0	30	100	0		
10	10	BCK	30	0	30	100	0		
11	11	BGKT	30	0	30	100	0		
12	12	BLCB	30	0	30	100	0		
13	13	BNGB	30	0	30	100	0		
14	14	BNN	30	0	30	100	0		
15	15	BODT	30	0	30	100	0		
16	16	BZK	30	0	30	100	0		
17	17	CANT	30	0	30	100	0		
18	18	CAVI	30	0	30	100	0		
19	19	CEYT	30	0	30	100	0		
20	20	CLDR	30	0	30	100	0		
21	21	CORM	30	0	30	100	0		
22	22	CRLT	30	0	30	100	0		
23	23	CTKS	30	0	30	100	0		
24	24	CTYL	30	0	30	100	0		
25	25	CUKT	30	0	30	100	0		
26	26	DALY	30	0	30	100	0		
27	27	DARE	30	0	30	100	0		
28	28	DAT	20	10	30	67	33		
29	29	DIKM	30	0	30	100	0		
30	30	DYBB	30	0	30	100	0		
31	31	EDC	30	0	30	100	0		
32	32	EDRB	30	0	30	100	0		
33	33	ELL	30	0	30	100	0		
34	34	ENEZ	30	0	30	100	0		
35	35	EREN	30	0	30	100	0		
36	36	ERIK	30	0	30	100	0		
37	37	ERZN	30	0	30	100	0		
38	38	EZN	30	0	30	100	0		
39	39	FETY	30	0	30	100	0		
40	40	GADA	9	21	30	30	70		
41	41	GAZ	0	30	30	0	100		
42	42	GELI	30	0	30	100	0		
43	43	GEMT	29	1	30	97	3		
44	44	GONE	0	30	30	0	100		
45	45	GULT	30	0	30	100	0		
46	46	HDMB	0	30	30	0	100		
47	47	HRTX	30	0	30	100	0		
48	48	IKL	0	30	30	0	100		
49	49	ILIC	30	0	30	100	0		
50	50	ISK	30	0	30	100	0		
51	51	ISP	30	0	30	100	0	88	12
52	52	KARA	30	0	30	100	0		
53	53	KARS	30	0	30	100	0		
54	54	KCTX	30	0	30	100	0		
55	55	KDZE	30	0	30	100	0		
56	56	KLYT	30	0	30	100	0		
57	57	KMRS	30	0	30	100	0		
58	58	KONT	30	0	30	100	0		
59	59	KOZT	28	2	30	93	7		
60	60	KRBG	30	0	30	100	0		
61	61	KRTS	0	30	30	0	100		
62	62	KTUT	30	0	30	100	0		
63	63	KULA	30	0	30	100	0		
64	64	KVT	30	0	30	100	0		
65	65	LADK	30	0	30	100	0		
66	66	LAP	30	0	30	100	0		
67	67	LEF	30	0	30	100	0		
68	68	LFK	28	2	30	93	7		
69	69	LOD	30	0	30	100	0		
70	70	MALT	30	0	30	100	0		
71	71	MAZI	30	0	30	100	0		
72	72	MDNY	30	0	30	100	0		
73	73	MDUB	30	0	30	100	0		
74	74	MERS	30	0	30	100	0		
75	75	MFTX	0	30	30	0	100		
76	76	MLSB	0	30	30	0	100		
77	77	MRMT	30	0	30	100	0		
78	78	PHRS	30	0	30	100	0		
79	79	PTK	22	8	30	73	27		
80	80	RKY	30	0	30	100	0		
81	81	RSDY	30	0	30	100	0		
82	82	SARI	0	30	30	0	100		
83	83	SHUT	28	2	30	93	7		
84	84	SILT	30	0	30	100	0		
85	85	SIRT	30	0	30	100	0		
86	86	SLVT	30	0	30	100	0		
87	87	SPNC	28	2	30	93	7		
88	88	SULT	30	0	30	100	0		
89	89	SVAN	27	3	30	90	10		
90	90	SVRC	30	0	30	100	0		
91	91	SVRH	30	0	30	100	0		
92	92	SVSK	29	1	30	97	3		
93	93	TAHT	0	30	30	0	100		
94	94	TKR	30	0	30	100	0		
95	95	TVSB	30	0	30	100	0		
96	96	URFA	30	0	30	100	0		
97	97	VANB	18	12	30	60	40		
98	98	VRTB	30	0	30	100	0		
99	99	YER	30	0	30	100	0		
100	100	YLVX	0	30	30	0	100		

101	1	KISA PERİYOT (SHORT PERIOD) İSTASYONLAR	AKS	30	0	30	100	0	86	14
102	2		BNT	30	0	30	100	0		
103	3		BTMT	30	0	30	100	0		
104	4		BYBT	14	16	30	47	53		
105	5		DENT	30	0	30	100	0		
106	6		DST	30	0	30	100	0		
107	7		ESKT	30	0	30	100	0		
108	8		EZM	29	1	30	97	3		
109	9		GPA	30	0	30	100	0		
110	10		GUMT	23	7	30	77	23		
111	11		HKR	30	0	30	100	0		
112	12		IZI	27	3	30	90	10		
113	13		IZM	30	0	30	100	0		
114	14		KAMT	5	25	30	17	83		
115	15		KHL	30	0	30	100	0		
116	16		KIZT	30	0	30	100	0		
117	17		NIG	30	0	30	100	0		
118	18		ORLT	15	15	30	50	50		
119	19		SAFT	30	0	30	100	0		
120	20		TOKT	4	26	30	13	87		
121	21		TOS	30	0	30	100	0		
122	22		YOZ	30	0	30	100	0		
							+	(-)		
2010 NİSAN ORTALAMA %							88	12		

KISA PERİYOT (SP) İSTASYONLAR Toplam: 22 Adet Nisan 2010

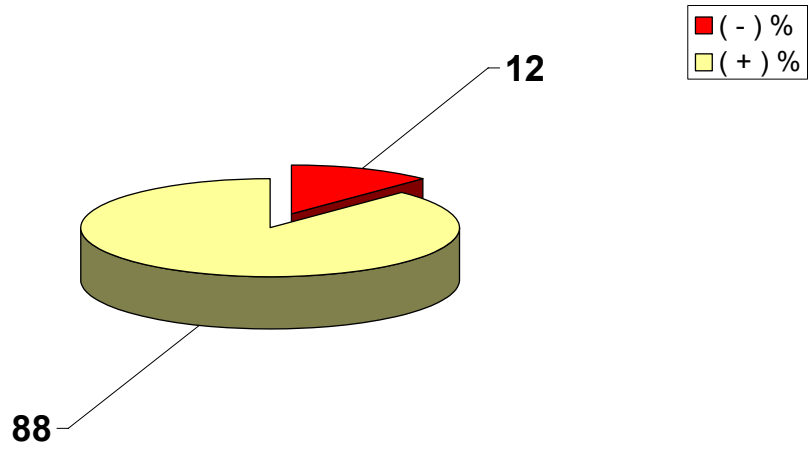


◆ Kısa Periyot
TELEFON HATTI
20 Adet

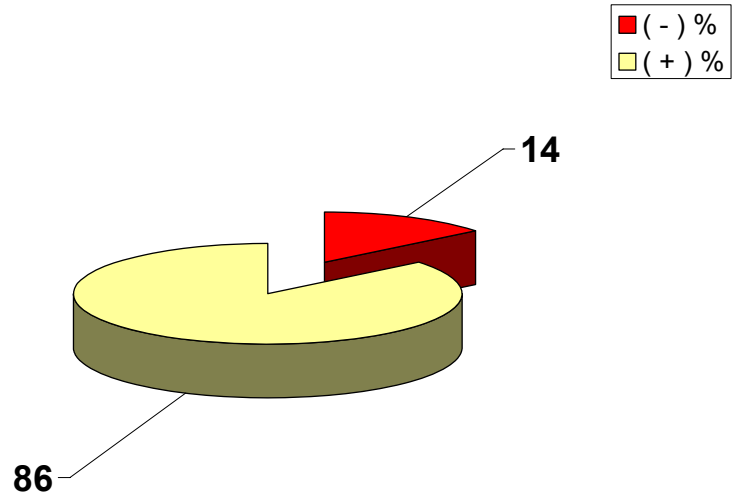
◆ Kısa Periyot
TELEMETRİ
1 Adet

◆ Kısa Periyot
UYDU İLETİŞİMLİ
1 Adet

2010 NİSAN AYI BROAD-BAND İSTASYONLARI VERİMLİLİK GRAFİĞİ



2010 NİSAN AYI SHORT PERIOD İSTASYONLARI VERİMLİLİK GRAFİĞİ



TÜRKİYE DEPREM ETKİNLİĞİ (2010 YILI NİSAN AYI)

No	Tarih - Date			Zaman - Time			Koordinat - Coordinate			Derinlik - Depth		Magnitüd - Magnitude										
	Gün	Ay	Yıl	Saat	Dak.	San.	Enlem-K	Boylam-D	Ref	Km.	Ref	Ms	Ref	Mb	Ref	Md	Ref	MI	Ref	Mw	Ref	
1	1	4	2010	0	39	23.7	38.28	39.36	R	2	R					3.4	R					
2	1	4	2010	1	2	5.3	41.28	33.69	R	5	R					3.6	R					
3	1	4	2010	1	16	27.8	37.21	28.05	R	5	R					3.2	R					
4	1	4	2010	1	41	18.4	36.33	35.95	R	25	R					3.4	R					
5	1	4	2010	2	22	18.2	40.10	29.14	R	3	R					2.8	R					
6	1	4	2010	2	36	20.2	38.86	40.13	R	7	R					2.8	R					
7	1	4	2010	3	2	8.6	38.42	39.34	R	4	R					2.8	R					
8	1	4	2010	3	41	14.5	38.40	27.11	R	4	R					2.7	R					
9	1	4	2010	3	54	31.6	38.35	27.34	R	3	R					2.3	R					
10	1	4	2010	3	56	7.7	38.35	27.05	R	14	R					2.3	R					
11	1	4	2010	4	4	29.1	38.81	40.12	R	9	R					2.9	R					
12	1	4	2010	4	6	46.9	38.85	40.11	R	5	R					2.3	R					
13	1	4	2010	4	31	16.1	37.02	28.84	R	6	R					3.0	R					
14	1	4	2010	4	53	18.5	39.09	29.07	R	6	R					2.7	R					
15	1	4	2010	5	7	11.5	39.72	42.79	R	2	R									3.3	R	
16	1	4	2010	5	10	44.9	39.71	42.74	R	5	R					2.9	R			2.8	R	
17	1	4	2010	5	24	23.9	37.75	29.36	R	5	R					2.8	R					
18	1	4	2010	5	50	7.9	40.90	28.69	R	12	R					2.8	R					
19	1	4	2010	8	32	14.6	39.91	41.27	R	7	R					3.1	R					
20	1	4	2010	8	57	0.6	39.52	29.24	R	24	R					2.8	R					

TÜRKİYE DEPREM ETKİNLİĞİ (2010 YILI NİSAN AYI)

No	Tarih - Date			Zaman - Time			Koordinat - Coordinate			Derinlik - Depth		Magnitüd - Magnitude										
	Gün	Ay	Yıl	Saat	Dak.	San.	Enlem-K	Boylam-D	Ref	Km.	Ref	Ms	Ref	Mb	Ref	Md	Ref	MI	Ref	Mw	Ref	
21	1	4	2010	9	24	6.6	37.29	28.24	R	8	R					2.6	R					
22	1	4	2010	9	25	20.0	36.96	29.35	R	5	R					3.0	R	3.1	R			
23	1	4	2010	10	25	14.5	40.80	39.32	R	6	R					2.7	R					
24	1	4	2010	11	52	54.2	39.35	38.45	R	23	R					2.6	R					
25	1	4	2010	12	9	31.4	37.84	37.73	R	24	R					2.8	R					
26	1	4	2010	15	0	37.1	38.04	38.26	R	5	R					2.7	R					
27	1	4	2010	15	3	24.8	37.22	27.89	R	13	R					2.6	R					
28	1	4	2010	15	25	1.4	36.78	27.52	R	17	R					2.7	R					
29	1	4	2010	15	25	10.6	40.47	33.47	R	8	R					2.6	R					
30	1	4	2010	15	31	5.9	39.37	38.54	R	11	R					2.5	R					
31	1	4	2010	16	29	47.9	39.31	27.42	R	3	R					2.9	R					
32	1	4	2010	17	15	3.4	37.20	41.99	R	6	R					3.1	R					
33	1	4	2010	18	22	15.2	38.74	39.26	R	21	R					2.7	R					
34	1	4	2010	18	25	41.2	38.64	39.88	R	5	R					2.9	R					
35	1	4	2010	18	56	20.1	38.59	30.29	R	8	R					2.6	R					
36	1	4	2010	19	55	2.4	38.79	40.06	R	18	R					2.7	R					
37	1	4	2010	19	55	47.6	38.78	40.05	R	7	R					3.0	R					
38	1	4	2010	20	55	35.8	38.55	31.24	R	4	R					3.0	R					
39	1	4	2010	21	15	31.3	40.49	26.49	R	2	R					2.0	R					
40	1	4	2010	22	1	9.9	39.08	40.50	R	5	R					2.6	R					

TÜRKİYE DEPREM ETKİNLİĞİ (2010 YILI NİSAN AYI)

No	Tarih - Date			Zaman - Time			Koordinat - Coordinate			Derinlik - Depth		Magnitüd - Magnitude									
	Gün	Ay	Yıl	Saat	Dak.	San.	Enlem-K	Boylam-D	Ref	Km.	Ref	Ms	Ref	Mb	Ref	Md	Ref	MI	Ref	Mw	Ref
41	1	4	2010	22	46	37.0	36.95	29.34	R	5	R					2.4	R				
42	1	4	2010	22	48	8.3	37.15	28.74	R	12	R					2.6	R				
43	1	4	2010	22	52	19.1	38.53	32.20	R	16	R					2.7	R				
44	1	4	2010	23	13	45.1	40.61	27.47	R	15	R					1.9	R				
45	1	4	2010	23	42	43.8	39.13	29.01	R	5	R					2.6	R				
46	1	4	2010	23	43	14.4	36.95	29.33	R	5	R					2.8	R				
47	1	4	2010	23	49	33.6	37.58	38.48	R	2	R					3.0	R				
48	1	4	2010	23	57	47.1	40.91	28.70	R	5	R					2.7	R				
49	2	4	2010	0	5	27.0	40.30	25.36	R	5	R					2.8	R				
50	2	4	2010	0	9	21.6	40.84	28.62	R	9	R					2.1	R				
51	2	4	2010	0	9	35.6	37.02	28.91	R	5	R					2.8	R				
52	2	4	2010	0	11	43.1	36.94	29.32	R	2	R					3.0	R				
53	2	4	2010	0	14	7.8	37.04	29.34	R	5	R					2.5	R				
54	2	4	2010	0	48	26.3	36.82	30.33	R	6	R					2.8	R				
55	2	4	2010	0	57	54.7	37.17	28.60	R	5	R					2.5	R				
56	2	4	2010	1	1	51.0	37.03	28.98	R	10	R					2.6	R				
57	2	4	2010	1	5	24.9	35.92	31.05	R	43	R			4.0	N			3.5	R		
58	2	4	2010	1	33	16.2	38.44	39.25	R	6	R					3.0	R				
59	2	4	2010	2	5	45.9	38.06	26.60	R	29	R					2.4	R				
60	2	4	2010	2	18	52.2	39.38	33.08	R	9	R					3.0	R				

TÜRKİYE DEPREM ETKİNLİĞİ (2010 YILI NİSAN AYI)

No	Tarih - Date			Zaman - Time			Koordinat - Coordinate			Derinlik - Depth		Magnitüd - Magnitude									
	Gün	Ay	Yıl	Saat	Dak.	San.	Enlem-K	Boylam-D	Ref	Km.	Ref	Ms	Ref	Mb	Ref	Md	Ref	MI	Ref	Mw	Ref
61	2	4	2010	3	4	25.4	37.65	36.43	R	5	R					2.8	R				
62	2	4	2010	3	22	25.4	38.87	39.06	R	15	R					2.5	R				
63	2	4	2010	4	4	45.7	38.47	43.70	R	5	R					2.4	R				
64	2	4	2010	4	44	35.5	40.16	25.34	R	2	R					2.6	R				
65	2	4	2010	4	50	13.5	36.97	29.34	R	5	R					2.8	R				
66	2	4	2010	5	30	21.9	37.05	28.51	R	18	R					2.5	R				
67	2	4	2010	5	33	6.2	37.27	28.20	R	5	R					2.6	R				
68	2	4	2010	5	53	56.2	40.77	34.80	R	25	R					2.9	R				
69	2	4	2010	7	9	27.5	37.68	35.57	R	5	R					2.8	R				
70	2	4	2010	7	37	16.3	40.55	34.99	R	8	R			4.3	N			4.5	R		
71	2	4	2010	7	42	39.3	40.52	35.10	R	5	R					2.8	R				
72	2	4	2010	7	47	53.8	40.54	35.14	R	6	R					3.0	R				
73	2	4	2010	8	14	27.3	37.25	37.25	R	5	R					3.1	R				
74	2	4	2010	8	47	7.6	37.25	28.20	R	6	R					2.6	R				
75	2	4	2010	8	57	35.8	40.88	38.77	R	20	R					2.6	R				
76	2	4	2010	9	5	21.3	37.72	37.82	R	3	R					2.7	R				
77	2	4	2010	9	18	39.0	39.27	24.76	R	6	R					3.4	R				
78	2	4	2010	9	27	34.3	39.92	28.90	R	16	R					2.7	R				
79	2	4	2010	9	30	49.7	36.71	28.23	R	46	R							3.4	R		
80	2	4	2010	9	40	23.2	41.45	34.90	R	27	R					2.6	R				

TÜRKİYE DEPREM ETKİNLİĞİ (2010 YILI NİSAN AYI)

No	Tarih - Date			Zaman - Time			Koordinat - Coordinate			Derinlik - Depth		Magnitüd - Magnitude									
	Gün	Ay	Yıl	Saat	Dak.	San.	Enlem-K	Boylam-D	Ref	Km.	Ref	Ms	Ref	Mb	Ref	Md	Ref	MI	Ref	Mw	Ref
81	2	4	2010	10	5	5.2	41.89	34.20	R	7	R					2.8	R				
82	2	4	2010	10	10	49.0	39.63	26.42	R	8	R					2.6	R				
83	2	4	2010	10	12	1.7	37.92	27.08	R	21	R					2.5	R				
84	2	4	2010	10	26	56.8	39.10	39.64	R	8	R					2.8	R				
85	2	4	2010	10	36	11.4	37.15	38.92	R	5	R					3.0	R				
86	2	4	2010	11	39	18.0	40.53	35.06	R	8	R					3.3	R	3.2	R		
87	2	4	2010	12	24	45.9	41.23	34.55	R	15	R					2.7	R				
88	2	4	2010	12	47	35.1	40.49	35.13	R	8	R					2.8	R				
89	2	4	2010	13	23	36.6	40.39	29.17	R	5	R					2.3	R				
90	2	4	2010	13	33	25.9	37.22	28.22	R	14	R					2.7	R				
91	2	4	2010	13	57	5.3	38.46	27.34	R	8	R					2.5	R				
92	2	4	2010	14	3	17.1	38.69	30.95	R	9	R					2.6	R				
93	2	4	2010	14	27	14.2	40.53	35.09	R	8	R					2.7	R				
94	2	4	2010	14	52	54.7	37.21	28.16	R	4	R					2.6	R				
95	2	4	2010	15	6	30.4	37.19	27.88	R	11	R					2.6	R				
96	2	4	2010	15	7	58.8	38.93	26.98	R	9	R					2.8	R				
97	2	4	2010	16	37	6.3	39.55	26.45	R	14	R					2.7	R				
98	2	4	2010	17	58	52.4	40.13	28.08	R	6	R					2.7	R				
99	2	4	2010	18	55	7.1	38.99	25.98	R	5	R					2.8	R				
100	2	4	2010	19	49	52.7	37.85	27.25	R	18	R					2.5	R				

TÜRKİYE DEPREM ETKİNLİĞİ (2010 YILI NİSAN AYI)

No	Tarih - Date			Zaman - Time			Koordinat - Coordinate			Derinlik - Depth		Magnitüd - Magnitude									
	Gün	Ay	Yıl	Saat	Dak.	San.	Enlem-K	Boylam-D	Ref	Km.	Ref	Ms	Ref	Mb	Ref	Md	Ref	MI	Ref	Mw	Ref
101	2	4	2010	19	52	53.3	37.56	29.53	R	5	R					2.8	R				
102	2	4	2010	20	9	25.0	39.52	25.91	R	11	R					2.6	R				
103	2	4	2010	20	32	8.4	40.11	42.56	R	9	R					2.9	R				
104	2	4	2010	21	18	40.2	37.69	26.91	R	24	R					2.6	R				
105	2	4	2010	22	28	49.4	40.50	27.22	R	8	R					2.6	R				
106	3	4	2010	0	1	43.1	38.14	27.27	R	23	R					2.4	R				
107	3	4	2010	6	48	54.6	37.30	28.20	R	4	R					2.8	R				
108	3	4	2010	6	53	19.7	39.13	42.23	R	10	R					2.9	R				
109	3	4	2010	6	56	42.7	35.64	31.93	R	20	R							2.3	R		
110	3	4	2010	8	32	11.2	37.15	27.91	R	15	R					2.6	R				
111	3	4	2010	8	43	11.0	37.23	28.17	R	5	R					2.5	R				
112	3	4	2010	13	14	42.8	37.27	28.20	R	2	R					2.6	R				
113	3	4	2010	13	19	5.9	38.72	40.00	R	5	R							3.7	R		
114	3	4	2010	13	28	40.8	38.71	40.04	R	8	R					2.8	R				
115	3	4	2010	14	2	57.4	39.17	28.54	R	5	R					2.8	R				
116	3	4	2010	14	3	49.7	39.83	29.94	R	14	R					2.9	R				
117	3	4	2010	14	32	52.6	40.16	28.83	R	16	R					2.5	R				
118	3	4	2010	14	57	34.3	37.55	38.40	R	7	R					3.1	R				
119	3	4	2010	15	9	24.3	39.54	28.92	R	2	R					2.9	R				
120	3	4	2010	15	33	33.4	39.61	28.92	R	8	R					2.8	R				

TÜRKİYE DEPREM ETKİNLİĞİ (2010 YILI NİSAN AYI)

No	Tarih - Date			Zaman - Time			Koordinat - Coordinate			Derinlik - Depth		Magnitüd - Magnitude									
	Gün	Ay	Yıl	Saat	Dak.	San.	Enlem-K	Boylam-D	Ref	Km.	Ref	Ms	Ref	Mb	Ref	Md	Ref	MI	Ref	Mw	Ref
121	3	4	2010	15	39	39.0	37.80	35.54	R	5	R					2.6	R				
122	3	4	2010	16	25	14.0	40.77	27.49	R	10	R					2.4	R				
123	3	4	2010	18	22	42.3	36.88	27.60	R	6	R					2.9	R				
124	3	4	2010	18	45	14.8	39.49	28.91	R	5	R					2.9	R				
125	3	4	2010	19	59	29.7	39.29	24.70	R	7	R					3.5	R				
126	3	4	2010	20	7	1.6	36.90	29.33	R	5	R					2.7	R				
127	3	4	2010	20	58	3.4	37.02	30.58	R	72	R					2.9	R				
128	3	4	2010	22	2	11.7	38.16	26.10	R	8	R					3.3	R				
129	3	4	2010	22	31	21.2	38.68	39.99	R	5	R					2.9	R				
130	4	4	2010	0	37	56.1	37.74	26.69	R	14	R					2.8	R				
131	4	4	2010	0	40	27.8	37.77	26.63	R	22	R					2.7	R				
132	4	4	2010	1	25	21.8	39.23	29.57	R	19	R					2.3	R				
133	4	4	2010	1	31	31.5	37.20	35.81	R	31	R					2.7	R				
134	4	4	2010	1	32	55.8	38.92	32.76	R	6	R					2.8	R				
135	4	4	2010	1	36	48.7	39.52	28.25	R	5	R					2.6	R				
136	4	4	2010	1	54	34.0	37.75	27.52	R	5	R					3.2	R				
137	4	4	2010	1	59	25.2	39.44	28.98	R	5	R					2.9	R				
138	4	4	2010	2	3	40.4	39.46	28.90	R	14	R					2.5	R				
139	4	4	2010	2	54	23.5	38.68	30.89	R	5	R							3.1	R		
140	4	4	2010	3	4	51.1	39.52	28.91	R	2	R					3.1	R				

TÜRKİYE DEPREM ETKİNLİĞİ (2010 YILI NİSAN AYI)

No	Tarih - Date			Zaman - Time			Koordinat - Coordinate			Derinlik - Depth		Magnitüd - Magnitude									
	Gün	Ay	Yıl	Saat	Dak.	San.	Enlem-K	Boylam-D	Ref	Km.	Ref	Ms	Ref	Mb	Ref	Md	Ref	MI	Ref	Mw	Ref
141	4	4	2010	3	12	32.0	39.55	28.86	R	5	R					3.0	R	3.0	R		
142	4	4	2010	3	54	5.2	39.47	28.97	R	5	R					3.0	R				
143	4	4	2010	4	52	15.8	40.35	28.45	R	11	R					2.9	R				
144	4	4	2010	5	41	19.5	37.28	28.26	R	2	R					2.6	R				
145	4	4	2010	6	1	17.3	39.75	30.53	R	17	R					2.7	R				
146	4	4	2010	6	21	26.8	37.05	28.25	R	23	R					2.6	R				
147	4	4	2010	6	22	40.5	38.50	25.37	R	10	R					2.7	R				
148	4	4	2010	7	0	30.6	40.50	35.09	R	5	R					2.9	R				
149	4	4	2010	7	17	14.4	40.73	29.27	R	5	R					2.6	R				
150	4	4	2010	7	23	1.3	39.50	28.85	R	5	R					2.8	R				
151	4	4	2010	9	3	50.8	37.19	28.16	R	5	R					2.6	R				
152	4	4	2010	9	9	25.0	39.31	27.57	R	10	R					2.8	R				
153	4	4	2010	9	32	25.9	38.24	38.11	R	8	R					2.9	R				
154	4	4	2010	11	45	37.2	38.91	27.80	R	19	R					2.7	R				
155	4	4	2010	12	32	36.7	37.13	28.58	R	7	R					2.6	R				
156	4	4	2010	14	45	12.5	37.22	28.13	R	5	R					2.6	R				
157	4	4	2010	14	46	30.5	39.54	37.96	R	29	R					3.0	R				
158	4	4	2010	15	55	37.4	39.38	38.54	R	24	R					2.9	R				
159	4	4	2010	16	16	37.5	40.43	34.45	R	5	R					2.6	R				
160	4	4	2010	16	22	13.4	34.92	34.09	R	46	R					2.9	R				

TÜRKİYE DEPREM ETKİNLİĞİ (2010 YILI NİSAN AYI)

No	Tarih - Date			Zaman - Time			Koordinat - Coordinate			Derinlik - Depth		Magnitüd - Magnitude									
	Gün	Ay	Yıl	Saat	Dak.	San.	Enlem-K	Boylam-D	Ref	Km.	Ref	Ms	Ref	Mb	Ref	Md	Ref	MI	Ref	Mw	Ref
161	4	4	2010	18	37	56.6	37.95	29.29	R	31	R					2.7	R				
162	4	4	2010	19	36	45.1	37.03	29.14	R	5	R					2.9	R				
163	4	4	2010	21	15	37.1	41.10	34.23	R	16	R					2.9	R				
164	4	4	2010	21	25	6.7	36.99	29.14	R	5	R					2.7	R				
165	4	4	2010	21	49	13.4	38.41	27.58	R	6	R					3.0	R				
166	4	4	2010	22	2	20.0	38.32	29.36	R	10	R					2.7	R				
167	4	4	2010	22	47	4.2	39.54	38.05	R	6	R					2.9	R				
168	4	4	2010	23	5	1.4	39.47	44.07	R	5	R					3.0	R				
169	4	4	2010	23	46	14.6	40.45	35.10	R	5	R					2.9	R				
170	5	4	2010	0	42	54.1	34.64	27.50	R	27	R							3.1	R		
171	5	4	2010	0	52	3.8	38.83	40.12	R	2	R					2.6	R				
172	5	4	2010	0	56	41.7	37.04	28.85	R	10	R					3.1	R				
173	5	4	2010	1	0	51.2	40.54	34.99	R	5	R							3.6	R		
174	5	4	2010	1	20	9.0	36.94	29.34	R	2	R					3.0	R				
175	5	4	2010	1	49	55.9	36.32	32.33	R	30	R					3.2	R				
176	5	4	2010	2	17	25.8	38.15	30.10	R	30	R					2.7	R				
177	5	4	2010	3	16	46.4	38.87	40.16	R	5	R					2.9	R				
178	5	4	2010	3	49	12.7	38.66	40.14	R	9	R					3.0	R				
179	5	4	2010	3	53	22.8	37.87	27.27	R	23	R					2.6	R				
180	5	4	2010	3	57	0.5	37.90	29.57	R	19	R					2.7	R				

TÜRKİYE DEPREM ETKİNLİĞİ (2010 YILI NİSAN AYI)

No	Tarih - Date			Zaman - Time			Koordinat - Coordinate			Derinlik - Depth		Magnitüd - Magnitude									
	Gün	Ay	Yıl	Saat	Dak.	San.	Enlem-K	Boylam-D	Ref	Km.	Ref	Ms	Ref	Mb	Ref	Md	Ref	MI	Ref	Mw	Ref
181	5	4	2010	5	58	16.1	37.10	28.17	R	12	R					2.6	R				
182	5	4	2010	6	3	56.7	39.47	31.55	R	6	R					2.8	R				
183	5	4	2010	6	24	37.7	38.65	39.16	R	16	R					2.6	R				
184	5	4	2010	6	40	29.1	38.50	39.36	R	2	R					2.5	R				
185	5	4	2010	7	24	26.0	38.74	39.99	R	5	R					2.9	R				
186	5	4	2010	8	11	15.6	39.59	26.20	R	26	R					2.5	R				
187	5	4	2010	8	20	11.9	38.16	31.84	R	8	R					2.7	R				
188	5	4	2010	8	53	39.9	38.76	40.04	R	6	R					2.9	R				
189	5	4	2010	8	59	4.3	38.70	40.06	R	12	R					2.7	R				
190	5	4	2010	9	3	49.8	37.25	27.89	R	10	R					2.8	R				
191	5	4	2010	9	5	21.8	39.30	27.73	R	7	R					2.7	R				
192	5	4	2010	9	19	13.6	38.75	39.99	R	10	R					2.7	R				
193	5	4	2010	9	27	7.5	39.24	27.85	R	13	R					2.7	R				
194	5	4	2010	9	51	26.8	37.01	28.87	R	15	R					2.4	R				
195	5	4	2010	11	7	39.0	37.26	28.21	R	5	R					2.6	R				
196	5	4	2010	11	40	45.4	40.08	27.14	R	7	R					2.4	R				
197	5	4	2010	12	20	4.7	39.84	36.33	R	14	R					2.9	R				
198	5	4	2010	12	32	33.6	40.60	26.59	R	27	R					2.1	R				
199	5	4	2010	12	41	19.4	37.20	28.19	R	7	R					2.7	R				
200	5	4	2010	13	0	1.9	39.99	33.49	R	6	R					3.1	R				

TÜRKİYE DEPREM ETKİNLİĞİ (2010 YILI NİSAN AYI)

No	Tarih - Date			Zaman - Time			Koordinat - Coordinate			Derinlik - Depth		Magnitüd - Magnitude									
	Gün	Ay	Yıl	Saat	Dak.	San.	Enlem-K	Boylam-D	Ref	Km.	Ref	Ms	Ref	Mb	Ref	Md	Ref	MI	Ref	Mw	Ref
201	5	4	2010	13	20	15.8	39.88	33.08	R	6	R					2.5	R				
202	5	4	2010	13	31	46.1	39.42	27.40	R	5	R					2.9	R				
203	5	4	2010	13	52	56.1	38.53	39.56	R	10	R					2.6	R				
204	5	4	2010	13	55	35.6	37.52	35.97	R	6	R					2.9	R				
205	5	4	2010	15	21	22.1	40.32	27.83	R	4	R					2.7	R				
206	5	4	2010	15	31	57.8	40.63	26.62	R	7	R					2.3	R				
207	5	4	2010	15	42	43.8	40.11	27.13	R	10	R					2.7	R				
208	5	4	2010	16	49	2.6	38.75	40.07	R	12	R					2.6	R				
209	5	4	2010	17	20	40.2	38.20	39.33	R	11	R					2.8	R				
210	5	4	2010	17	43	19.6	39.10	29.09	R	7	R					2.9	R				
211	5	4	2010	18	36	10.3	38.69	40.10	R	8	R					3.1	R				
212	5	4	2010	20	25	28.4	37.16	28.10	R	5	R					2.5	R				
213	5	4	2010	22	3	52.6	39.13	29.05	R	10	R					2.8	R				
214	6	4	2010	1	14	56.7	36.63	45.48	R	5	R							3.6	R		
215	6	4	2010	1	38	4.8	40.66	29.20	R	6	R					2.5	R				
216	6	4	2010	5	35	58.8	37.29	28.20	R	6	R					2.7	R				
217	6	4	2010	8	50	50.2	39.05	27.65	R	2	R					2.8	R				
218	6	4	2010	9	23	6.2	37.15	27.90	R	24	R					2.7	R				
219	6	4	2010	9	27	20.8	37.08	27.90	R	29	R					2.6	R				
220	6	4	2010	9	30	23.4	37.11	27.91	R	19	R					2.6	R				

TÜRKİYE DEPREM ETKİNLİĞİ (2010 YILI NİSAN AYI)

No	Tarih - Date			Zaman - Time			Koordinat - Coordinate			Derinlik - Depth		Magnitüd - Magnitude									
	Gün	Ay	Yıl	Saat	Dak.	San.	Enlem-K	Boylam-D	Ref	Km.	Ref	Ms	Ref	Mb	Ref	Md	Ref	MI	Ref	Mw	Ref
221	6	4	2010	9	41	6.4	37.07	28.94	R	14	R					2.8	R				
222	6	4	2010	9	45	41.1	38.48	39.50	R	9	R					2.6	R				
223	6	4	2010	9	52	52.4	39.12	40.42	R	7	R					2.7	R				
224	6	4	2010	10	43	29.2	37.76	32.21	R	5	R					2.6	R				
225	6	4	2010	11	39	49.7	37.48	38.79	R	17	R					2.4	R				
226	6	4	2010	11	41	12.5	37.60	30.96	R	7	R					2.8	R				
227	6	4	2010	11	46	7.0	39.47	38.60	R	18	R					2.8	R				
228	6	4	2010	11	59	45.9	37.15	28.19	R	12	R					2.7	R				
229	6	4	2010	12	1	51.6	40.24	29.93	R	12	R					2.3	R				
230	6	4	2010	12	4	58.3	39.48	31.39	R	7	R					2.9	R				
231	6	4	2010	12	17	39.0	38.09	27.27	R	6	R					2.5	R				
232	6	4	2010	12	49	5.8	37.03	27.90	R	2	R					2.6	R				
233	6	4	2010	13	12	47.1	38.95	30.34	R	10	R					2.5	R				
234	6	4	2010	13	15	10.8	40.24	36.48	R	11	R					2.8	R				
235	6	4	2010	13	25	31.2	40.14	27.16	R	3	R					2.8	R				
236	6	4	2010	14	6	49.4	39.29	38.60	R	20	R					2.9	R				
237	6	4	2010	14	42	0.4	37.23	28.17	R	5	R					2.6	R				
238	6	4	2010	15	11	22.5	37.14	27.89	R	5	R					2.6	R				
239	6	4	2010	16	12	52.9	34.95	33.98	R	5	R					3.0	R				
240	6	4	2010	16	26	59.0	40.18	27.98	R	11	R					2.1	R				

TÜRKİYE DEPREM ETKİNLİĞİ (2010 YILI NİSAN AYI)

No	Tarih - Date			Zaman - Time			Koordinat - Coordinate			Derinlik - Depth		Magnitüd - Magnitude									
	Gün	Ay	Yıl	Saat	Dak.	San.	Enlem-K	Boylam-D	Ref	Km.	Ref	Ms	Ref	Mb	Ref	Md	Ref	MI	Ref	Mw	Ref
241	6	4	2010	17	50	4.3	42.23	43.46	R	16	R					3.2	R				
242	7	4	2010	0	51	18.2	38.56	39.34	R	9	R					2.7	R				
243	7	4	2010	0	53	34.0	40.19	40.92	R	5	R					2.8	R				
244	7	4	2010	1	8	53.7	38.91	30.02	R	4	R					2.4	R				
245	7	4	2010	2	49	45.5	38.13	31.08	R	13	R					2.7	R				
246	7	4	2010	3	39	20.1	36.96	29.22	R	8	R					2.8	R				
247	7	4	2010	4	10	2.5	40.17	40.92	R	5	R					2.8	R				
248	7	4	2010	4	10	46.0	38.88	27.82	R	8	R					2.7	R				
249	7	4	2010	4	40	44.3	38.48	39.49	R	9	R					2.9	R				
250	7	4	2010	6	34	39.8	40.23	27.91	R	17	R					2.7	R	2.7	R		
251	7	4	2010	7	18	2.8	37.05	28.93	R	13	R					2.1	R				
252	7	4	2010	7	48	40.8	38.46	27.63	R	15	R					2.2	R				
253	7	4	2010	7	51	9.4	38.29	26.05	R	13	R					2.7	R				
254	7	4	2010	8	46	6.9	37.11	28.31	R	22	R					2.5	R				
255	7	4	2010	8	57	8.5	37.23	28.28	R	23	R					2.6	R				
256	7	4	2010	9	57	49.9	36.80	28.00	R	15	R					2.8	R				
257	7	4	2010	10	11	2.1	36.68	34.33	R	23	R					2.5	R				
258	7	4	2010	10	31	38.3	37.94	27.38	R	24	R					2.6	R				
259	7	4	2010	10	33	54.1	38.73	39.36	R	22	R					2.3	R				
260	7	4	2010	11	14	14.4	37.34	40.29	R	15	R					2.6	R				

TÜRKİYE DEPREM ETKİNLİĞİ (2010 YILI NİSAN AYI)

No	Tarih - Date			Zaman - Time			Koordinat - Coordinate			Derinlik - Depth		Magnitüd - Magnitude									
	Gün	Ay	Yıl	Saat	Dak.	San.	Enlem-K	Boylam-D	Ref	Km.	Ref	Ms	Ref	Mb	Ref	Md	Ref	MI	Ref	Mw	Ref
261	7	4	2010	11	19	1.8	37.32	28.12	R	27	R					2.6	R				
262	7	4	2010	11	33	17.0	37.01	29.31	R	25	R					3.0	R				
263	7	4	2010	11	57	45.6	38.22	27.32	R	4	R					2.7	R				
264	7	4	2010	14	15	54.1	37.22	28.17	R	2	R					2.7	R				
265	7	4	2010	14	43	38.6	40.66	29.37	R	19	R					2.5	R				
266	7	4	2010	18	20	31.7	38.51	25.67	R	5	R					3.4	R				
267	7	4	2010	19	19	27.3	38.84	39.98	R	8	R					2.6	R				
268	7	4	2010	21	30	10.6	38.63	27.10	R	10	R					2.5	R				
269	7	4	2010	23	4	33.3	38.85	39.04	R	17	R					2.8	R				
270	8	4	2010	0	34	6.5	38.44	39.58	R	6	R					2.7	R				
271	8	4	2010	0	44	22.3	37.67	38.72	R	5	R					2.8	R				
272	8	4	2010	1	2	33.5	37.16	27.61	R	5	R					2.9	R				
273	8	4	2010	2	51	19.5	35.74	30.68	R	11	R					3.6	R				
274	8	4	2010	2	55	35.2	36.51	28.02	R	26	R					3.1	R				
275	8	4	2010	3	23	40.5	38.57	30.33	R	6	R					2.9	R				
276	8	4	2010	3	28	2.0	38.36	38.72	R	5	R					2.5	R				
277	8	4	2010	5	16	35.2	38.40	27.32	R	4	R					2.1	R				
278	8	4	2010	6	31	24.6	36.88	27.55	R	8	R					2.9	R				
279	8	4	2010	6	39	8.6	37.04	27.60	R	24	R					2.0	R				
280	8	4	2010	6	51	21.9	40.68	29.20	R	5	R					2.5	R				

TÜRKİYE DEPREM ETKİNLİĞİ (2010 YILI NİSAN AYI)

No	Tarih - Date			Zaman - Time			Koordinat - Coordinate			Derinlik - Depth		Magnitüd - Magnitude										
	Gün	Ay	Yıl	Saat	Dak.	San.	Enlem-K	Boylam-D	Ref	Km.	Ref	Ms	Ref	Mb	Ref	Md	Ref	MI	Ref	Mw	Ref	
281	8	4	2010	7	0	59.7	42.25	43.37	R	24	R					2.6	R					
282	8	4	2010	7	25	36.8	38.76	40.06	R	5	R							3.4	R			
283	8	4	2010	7	28	30.2	37.95	28.99	R	5	R					3.0	R					
284	8	4	2010	7	36	29.4	37.21	28.18	R	3	R					2.5	R					
285	8	4	2010	7	45	56.5	38.65	29.36	R	5	R					2.8	R					
286	8	4	2010	8	15	20.5	37.97	29.00	R	5	R					2.9	R					
287	8	4	2010	9	29	52.0	37.25	28.18	R	5	R					2.9	R					
288	8	4	2010	10	37	59.6	38.04	35.00	R	14	R					2.5	R					
289	8	4	2010	10	59	50.0	37.50	38.89	R	5	R					2.3	R					
290	8	4	2010	11	12	27.6	36.97	30.27	R	2	R					3.0	R					
291	8	4	2010	11	18	5.6	38.81	28.00	R	16	R					2.4	R					
292	8	4	2010	11	42	42.3	40.13	29.44	R	14	R					2.3	R					
293	8	4	2010	12	35	59.7	36.68	26.94	R	16	R					2.7	R					
294	8	4	2010	13	45	18.0	42.08	35.16	R	13	R					2.9	R					
295	8	4	2010	13	45	57.6	39.36	31.99	R	5	R					2.6	R					
296	8	4	2010	14	6	58.2	36.90	39.29	R	2	R					2.9	R					
297	8	4	2010	14	29	31.5	39.58	31.81	R	2	R					2.8	R					
298	8	4	2010	14	32	55.0	37.00	35.53	R	16	R					1.8	R					
299	8	4	2010	14	44	42.0	37.26	28.21	R	5	R					2.4	R					
300	8	4	2010	14	46	37.2	37.05	28.13	R	4	R					2.5	R					

TÜRKİYE DEPREM ETKİNLİĞİ (2010 YILI NİSAN AYI)

No	Tarih - Date			Zaman - Time			Koordinat - Coordinate			Derinlik - Depth		Magnitüd - Magnitude									
	Gün	Ay	Yıl	Saat	Dak.	San.	Enlem-K	Boylam-D	Ref	Km.	Ref	Ms	Ref	Mb	Ref	Md	Ref	MI	Ref	Mw	Ref
301	8	4	2010	14	54	10.0	38.95	41.46	R	6	R					3.0	R				
302	8	4	2010	15	16	13.8	37.16	27.90	R	9	R					2.6	R				
303	8	4	2010	15	35	35.1	40.38	27.83	R	2	R					2.6	R				
304	8	4	2010	16	28	51.4	38.94	41.39	R	11	R					2.8	R				
305	8	4	2010	16	59	47.5	40.01	41.50	R	9	R					2.5	R				
306	8	4	2010	17	1	43.0	41.09	39.11	R	9	R					2.6	R				
307	8	4	2010	17	23	3.2	37.47	38.71	R	4	R					2.5	R				
308	8	4	2010	17	24	22.9	37.01	35.56	R	16	R					2.2	R				
309	8	4	2010	17	50	48.4	38.63	25.92	R	9	R					2.7	R				
310	8	4	2010	18	56	19.7	39.89	25.75	R	8	R					2.7	R				
311	8	4	2010	18	57	2.9	38.33	38.48	R	5	R					2.5	R				
312	8	4	2010	19	10	23.1	34.25	32.64	R	10	R					3.4	R				
313	8	4	2010	19	28	7.0	39.00	29.93	R	7	R					2.6	R				
314	8	4	2010	19	29	20.2	40.10	38.68	R	15	R					2.6	R				
315	8	4	2010	19	54	37.0	38.90	27.06	R	5	R					2.5	R				
316	8	4	2010	20	28	28.2	38.37	39.20	R	5	R					2.5	R				
317	8	4	2010	21	22	37.0	40.85	35.99	R	9	R					2.5	R				
318	9	4	2010	1	43	12.6	38.81	40.13	R	8	R					3.3	R				
319	9	4	2010	1	50	1.5	38.55	44.39	R	6	R					3.0	R				
320	9	4	2010	3	17	58.1	39.36	40.96	R	4	R					3.0	R				

TÜRKİYE DEPREM ETKİNLİĞİ (2010 YILI NİSAN AYI)

No	Tarih - Date			Zaman - Time			Koordinat - Coordinate			Derinlik - Depth		Magnitüd - Magnitude									
	Gün	Ay	Yıl	Saat	Dak.	San.	Enlem-K	Boylam-D	Ref	Km.	Ref	Ms	Ref	Mb	Ref	Md	Ref	MI	Ref	Mw	Ref
321	9	4	2010	3	31	12.5	38.70	27.84	R	8	R					2.8	R				
322	9	4	2010	3	54	41.2	40.54	34.96	R	10	R					2.6	R				
323	9	4	2010	4	9	53.2	39.87	38.71	R	8	R					2.6	R				
324	9	4	2010	4	24	56.6	36.63	27.66	R	10	R					2.5	R				
325	9	4	2010	4	36	1.9	36.75	36.01	R	5	R					3.3	R				
326	9	4	2010	5	6	23.2	37.04	29.51	R	9	R					2.9	R				
327	9	4	2010	5	52	11.1	38.33	30.67	R	9	R					2.6	R				
328	9	4	2010	7	9	9.6	35.62	29.44	R	12	R			4.2	N			4.2	R		
329	9	4	2010	9	39	24.4	39.79	30.18	R	17	R					2.6	R				
330	9	4	2010	10	7	17.6	40.06	38.85	R	9	R					2.7	R				
331	9	4	2010	10	11	2.8	37.13	29.49	R	28	R					2.5	R				
332	9	4	2010	10	31	3.8	38.79	40.09	R	8	R					2.8	R				
333	9	4	2010	11	22	31.8	39.71	38.88	R	19	R					2.6	R				
334	9	4	2010	11	27	10.9	40.44	28.93	R	5	R							3.3	R		
335	9	4	2010	11	38	5.0	39.90	33.07	R	7	R					2.3	R				
336	9	4	2010	11	45	4.3	38.23	38.02	R	12	R					2.3	R				
337	9	4	2010	11	48	52.8	38.38	39.64	R	8	R					2.4	R				
338	9	4	2010	12	11	50.0	40.44	35.10	R	4	R					2.4	R				
339	9	4	2010	14	10	8.8	38.38	27.30	R	5	R					2.4	R				
340	9	4	2010	14	49	0.2	37.21	28.20	R	16	R					2.5	R				

TÜRKİYE DEPREM ETKİNLİĞİ (2010 YILI NİSAN AYI)

No	Tarih - Date			Zaman - Time			Koordinat - Coordinate			Derinlik - Depth		Magnitüd - Magnitude										
	Gün	Ay	Yıl	Saat	Dak.	San.	Enlem-K	Boylam-D	Ref	Km.	Ref	Ms	Ref	Mb	Ref	Md	Ref	MI	Ref	Mw	Ref	
341	9	4	2010	15	1	8.2	37.34	28.14	R	8	R					2.5	R					
342	9	4	2010	15	29	43.8	39.45	38.68	R	8	R					2.5	R					
343	9	4	2010	16	49	42.4	36.89	36.12	R	5	R					2.9	R					
344	9	4	2010	16	52	57.3	36.90	29.34	R	5	R					2.7	R					
345	9	4	2010	17	38	39.8	36.88	30.32	R	10	R							3.4	R			
346	9	4	2010	17	40	55.9	36.86	30.34	R	5	R					2.8	R					
347	9	4	2010	18	46	53.4	38.55	40.82	R	5	R					2.8	R					
348	9	4	2010	20	24	3.7	37.04	30.33	R	6	R					2.7	R					
349	9	4	2010	20	54	2.9	37.00	28.70	R	5	R					2.4	R					
350	9	4	2010	22	28	26.7	38.89	39.03	R	27	R					2.4	R					
351	9	4	2010	22	28	52.0	36.78	28.94	R	4	R					2.7	R					
352	9	4	2010	22	53	8.5	40.90	28.04	R	7	R					2.6	R					
353	9	4	2010	23	11	48.6	39.61	41.03	R	4	R					2.7	R					
354	10	4	2010	0	27	28.6	38.68	30.88	R	9	R					3.0	R					
355	10	4	2010	1	14	12.9	38.43	39.25	R	8	R					2.5	R					
356	10	4	2010	2	14	7.8	39.55	44.00	R	5	R					2.7	R					
357	10	4	2010	2	19	44.8	38.96	29.58	R	2	R					2.4	R					
358	10	4	2010	2	22	5.1	39.06	29.73	R	14	R					2.3	R					
359	10	4	2010	5	8	7.7	38.42	27.22	R	5	R					2.7	R					
360	10	4	2010	7	16	28.2	40.85	31.67	R	5	R					2.9	R					

TÜRKİYE DEPREM ETKİNLİĞİ (2010 YILI NİSAN AYI)

No	Tarih - Date			Zaman - Time			Koordinat - Coordinate			Derinlik - Depth		Magnitüd - Magnitude									
	Gün	Ay	Yıl	Saat	Dak.	San.	Enlem-K	Boylam-D	Ref	Km.	Ref	Ms	Ref	Mb	Ref	Md	Ref	MI	Ref	Mw	Ref
361	10	4	2010	7	18	27.5	38.73	40.01	R	9	R					2.6	R				
362	10	4	2010	8	23	44.7	38.45	39.13	R	8	R					2.6	R				
363	10	4	2010	8	48	40.2	37.24	28.23	R	5	R					2.7	R				
364	10	4	2010	8	50	44.2	40.24	30.00	R	8	R					2.4	R				
365	10	4	2010	8	53	53.5	40.63	26.53	R	9	R					2.3	R				
366	10	4	2010	12	4	43.4	38.84	27.82	R	3	R					2.5	R				
367	10	4	2010	13	6	31.7	38.37	39.14	R	8	R					2.7	R				
368	10	4	2010	14	24	40.0	39.95	35.42	R	7	R					2.7	R				
369	10	4	2010	14	28	37.8	41.67	25.44	R	5	R					2.8	R				
370	10	4	2010	14	40	47.5	37.55	34.48	R	22	R					2.6	R				
371	10	4	2010	14	50	1.9	37.15	28.26	R	21	R					2.5	R				
372	10	4	2010	14	50	58.4	39.13	30.68	R	12	R					2.6	R				
373	10	4	2010	14	54	42.8	38.15	30.07	R	6	R					2.6	R				
374	10	4	2010	15	1	8.7	37.22	28.22	R	8	R					2.5	R				
375	10	4	2010	15	1	47.8	37.12	27.87	R	5	R					2.4	R				
376	10	4	2010	15	22	21.8	39.57	31.77	R	5	R					2.8	R				
377	10	4	2010	15	29	24.3	38.73	34.99	R	8	R					3.0	R				
378	10	4	2010	15	32	23.2	38.07	27.25	R	5	R					2.8	R				
379	10	4	2010	16	4	49.8	37.14	28.12	R	10	R					2.6	R				
380	10	4	2010	19	29	33.0	36.92	27.62	R	5	R					2.9	R				

TÜRKİYE DEPREM ETKİNLİĞİ (2010 YILI NİSAN AYI)

No	Tarih - Date			Zaman - Time			Koordinat - Coordinate			Derinlik - Depth		Magnitüd - Magnitude									
	Gün	Ay	Yıl	Saat	Dak.	San.	Enlem-K	Boylam-D	Ref	Km.	Ref	Ms	Ref	Mb	Ref	Md	Ref	MI	Ref	Mw	Ref
381	10	4	2010	19	43	41.5	38.38	39.12	R	2	R					3.0	R				
382	10	4	2010	19	55	37.4	37.55	36.53	R	7	R					2.9	R				
383	10	4	2010	20	18	40.2	38.75	40.04	R	7	R					3.3	R				
384	10	4	2010	20	53	23.1	36.40	27.88	R	5	R					2.8	R				
385	10	4	2010	20	54	35.8	36.84	36.12	R	5	R					3.3	R				
386	10	4	2010	22	56	35.3	38.85	26.59	R	4	R					2.8	R				
387	11	4	2010	0	3	57.4	37.97	38.15	R	5	R					2.8	R				
388	11	4	2010	0	39	56.5	38.39	39.12	R	7	R					3.0	R				
389	11	4	2010	0	47	50.0	36.52	40.87	R	6	R					3.2	R				
390	11	4	2010	1	36	32.7	36.31	28.25	R	12	R					2.8	R				
391	11	4	2010	1	57	9.2	36.31	28.25	R	8	R					2.8	R				
392	11	4	2010	3	14	38.1	38.35	31.06	R	4	R					2.8	R				
393	11	4	2010	5	17	44.1	38.38	30.55	R	5	R					2.9	R				
394	11	4	2010	6	15	20.6	37.21	28.18	R	10	R					2.6	R				
395	11	4	2010	6	24	3.2	40.13	29.80	R	9	R					2.2	R				
396	11	4	2010	6	46	33.5	36.99	28.69	R	2	R					2.3	R				
397	11	4	2010	7	32	38.6	39.32	38.60	R	17	R					2.6	R				
398	11	4	2010	11	7	4.5	38.92	42.23	R	7	R					2.9	R				
399	11	4	2010	12	46	8.6	37.68	26.70	R	10	R					2.7	R				
400	11	4	2010	12	51	6.8	37.66	26.67	R	2	R					3.1	R				

TÜRKİYE DEPREM ETKİNLİĞİ (2010 YILI NİSAN AYI)

No	Tarih - Date			Zaman - Time			Koordinat - Coordinate			Derinlik - Depth		Magnitüd - Magnitude									
	Gün	Ay	Yıl	Saat	Dak.	San.	Enlem-K	Boylam-D	Ref	Km.	Ref	Ms	Ref	Mb	Ref	Md	Ref	MI	Ref	Mw	Ref
401	11	4	2010	13	34	30.0	37.42	38.66	R	11	R					2.4	R				
402	11	4	2010	13	40	51.9	39.36	38.44	R	25	R					2.4	R				
403	11	4	2010	14	37	59.1	36.92	30.33	R	3	R					2.8	R				
404	11	4	2010	15	0	30.2	41.80	34.01	R	5	R					3.0	R				
405	11	4	2010	15	48	10.5	38.74	40.11	R	9	R					2.6	R				
406	11	4	2010	20	4	15.2	38.85	26.49	R	13	R					2.7	R				
407	11	4	2010	21	8	17.9	39.49	27.37	R	6	R					2.2	R				
408	11	4	2010	22	31	19.1	38.36	26.97	R	25	R					2.4	R				
409	11	4	2010	22	31	35.1	38.97	42.21	R	20	R					2.6	R				
410	11	4	2010	23	11	35.3	37.07	28.85	R	5	R					2.2	R				
411	11	4	2010	23	13	50.6	39.10	29.07	R	4	R					2.3	R				
412	11	4	2010	23	27	52.3	39.25	29.09	R	10	R					2.4	R				
413	11	4	2010	23	31	33.8	37.00	29.17	R	5	R					2.5	R				
414	12	4	2010	0	5	42.9	40.68	27.41	R	4	R					2.7	R				
415	12	4	2010	0	6	35.8	40.59	27.43	R	12	R					2.3	R				
416	12	4	2010	0	53	1.6	38.92	42.26	R	16	R					2.6	R				
417	12	4	2010	2	43	28.3	42.56	43.44	N	10	N			4.1	N			3.8	R		
418	12	4	2010	8	9	7.1	39.33	28.31	R	5	R					2.9	R				
419	12	4	2010	8	48	50.7	37.23	28.18	R	3	R					2.8	R				
420	12	4	2010	10	3	4.3	39.50	28.93	R	5	R					2.5	R				

TÜRKİYE DEPREM ETKİNLİĞİ (2010 YILI NİSAN AYI)

No	Tarih - Date			Zaman - Time			Koordinat - Coordinate			Derinlik - Depth		Magnitüd - Magnitude									
	Gün	Ay	Yıl	Saat	Dak.	San.	Enlem-K	Boylam-D	Ref	Km.	Ref	Ms	Ref	Mb	Ref	Md	Ref	MI	Ref	Mw	Ref
421	12	4	2010	10	34	30.7	36.51	27.60	R	8	R					2.7	R				
422	12	4	2010	10	41	25.1	38.77	40.45	R	5	R					2.6	R				
423	12	4	2010	11	7	6.8	38.71	27.91	R	10	R					2.6	R				
424	12	4	2010	12	6	50.5	41.00	25.77	R	12	R					2.6	R				
425	12	4	2010	12	10	17.4	39.96	29.98	R	14	R					2.4	R				
426	12	4	2010	12	11	9.2	41.63	27.92	R	8	R					2.6	R				
427	12	4	2010	12	17	34.3	39.09	27.61	R	5	R					2.6	R				
428	12	4	2010	12	31	16.1	37.24	28.23	R	2	R					2.5	R				
429	12	4	2010	13	11	12.7	37.66	26.65	R	13	R					2.6	R				
430	12	4	2010	13	30	42.9	38.79	40.04	R	5	R					3.0	R				
431	12	4	2010	13	45	25.9	39.90	33.08	R	7	R					2.3	R				
432	12	4	2010	13	53	39.8	38.96	39.98	R	10	R					2.6	R				
433	12	4	2010	14	24	37.9	40.76	26.36	R	4	R					2.2	R				
434	12	4	2010	18	21	29.7	37.97	29.17	R	5	R					2.6	R				
435	12	4	2010	18	31	10.5	37.50	37.57	R	7	R					2.7	R				
436	12	4	2010	22	9	2.2	37.22	35.82	R	5	R					3.1	R				
437	12	4	2010	22	24	27.1	40.76	30.37	R	4	R					2.8	R				
438	12	4	2010	23	1	59.1	37.30	37.19	R	9	R					3.9	R				
439	12	4	2010	23	25	53.2	38.82	40.16	R	5	R					2.7	R				
440	13	4	2010	1	40	22.2	37.67	26.56	R	9	R					3.9	R	3.5	R		

TÜRKİYE DEPREM ETKİNLİĞİ (2010 YILI NİSAN AYI)

No	Tarih - Date			Zaman - Time			Koordinat - Coordinate			Derinlik - Depth		Magnitüd - Magnitude										
	Gün	Ay	Yıl	Saat	Dak.	San.	Enlem-K	Boylam-D	Ref	Km.	Ref	Ms	Ref	Mb	Ref	Md	Ref	MI	Ref	Mw	Ref	
441	13	4	2010	1	48	23.4	37.63	26.71	R	17	R					2.6	R					
442	13	4	2010	7	16	14.6	38.70	32.96	R	6	R							2.9	R			
443	13	4	2010	8	45	37.1	37.22	28.15	R	2	R					2.6	R					
444	13	4	2010	12	54	24.1	38.80	40.10	R	9	R					2.8	R					
445	13	4	2010	14	51	35.6	39.12	30.66	R	12	R					2.8	R					
446	13	4	2010	15	6	9.2	40.52	29.25	R	14	R					2.4	R					
447	13	4	2010	15	18	19.4	36.20	27.48	N	10	N			4.2	N							
448	13	4	2010	16	15	6.6	40.00	27.42	R	9	R					2.8	R					
449	13	4	2010	18	33	50.3	38.63	30.24	R	5	R					2.6	R					
450	13	4	2010	19	22	12.7	40.07	42.07	R	5	R					3.1	R					
451	13	4	2010	20	31	3.3	37.66	26.94	R	27	R					2.6	R					
452	13	4	2010	21	18	59.6	38.06	28.57	R	7	R					2.6	R					
453	13	4	2010	22	22	19.6	38.12	25.99	R	5	R					3.3	R					
454	13	4	2010	22	57	34.5	38.14	26.21	R	10	R					2.6	R					
455	14	4	2010	2	31	19.2	39.35	33.22	R	7	R					2.6	R					
456	14	4	2010	3	1	38.9	40.61	30.33	R	5	R					2.4	R					
457	14	4	2010	3	10	30.0	36.11	33.96	R	19	R					3.0	R					
458	14	4	2010	6	58	37.7	36.62	40.88	R	5	R					3.2	R					
459	14	4	2010	7	37	53.2	37.34	28.18	R	4	R					2.5	R					
460	14	4	2010	8	26	53.6	36.70	27.94	R	27	R					2.4	R					

TÜRKİYE DEPREM ETKİNLİĞİ (2010 YILI NİSAN AYI)

No	Tarih - Date			Zaman - Time			Koordinat - Coordinate			Derinlik - Depth		Magnitüd - Magnitude									
	Gün	Ay	Yıl	Saat	Dak.	San.	Enlem-K	Boylam-D	Ref	Km.	Ref	Ms	Ref	Mb	Ref	Md	Ref	MI	Ref	Mw	Ref
461	14	4	2010	8	45	27.7	37.22	28.23	R	4	R					2.8	R				
462	14	4	2010	8	55	56.0	39.86	24.42	R	7	R					2.9	R				
463	14	4	2010	9	7	41.4	40.16	26.71	R	31	R					2.1	R				
464	14	4	2010	9	58	8.8	39.45	29.11	R	12	R					2.6	R				
465	14	4	2010	11	32	46.3	39.17	30.60	R	13	R					2.9	R				
466	14	4	2010	12	11	49.2	37.24	28.16	R	2	R					2.6	R				
467	14	4	2010	12	28	12.9	37.66	34.78	R	26	R					2.3	R				
468	14	4	2010	14	51	47.2	37.15	28.16	R	17	R					2.7	R				
469	14	4	2010	14	53	58.3	38.63	38.11	R	13	R					2.7	R				
470	14	4	2010	14	55	12.8	38.67	35.86	R	2	R					2.6	R				
471	14	4	2010	14	55	48.4	40.65	27.03	R	7	R					2.5	R				
472	14	4	2010	15	9	5.7	39.32	27.74	R	11	R					2.6	R				
473	14	4	2010	15	10	59.6	40.61	26.54	R	5	R					2.3	R				
474	14	4	2010	15	27	39.2	37.46	28.75	R	12	R					2.8	R				
475	14	4	2010	15	55	38.8	39.42	28.16	R	8	R					2.6	R				
476	14	4	2010	15	57	27.3	37.61	27.25	R	3	R					2.5	R				
477	14	4	2010	16	9	10.1	38.66	38.07	R	9	R					2.7	R				
478	14	4	2010	17	16	36.0	39.32	38.45	R	22	R					2.7	R				
479	14	4	2010	17	20	46.9	39.92	26.99	R	5	R					3.1	R				
480	14	4	2010	17	55	33.7	40.42	26.15	R	5	R					3.0	R				

TÜRKİYE DEPREM ETKİNLİĞİ (2010 YILI NİSAN AYI)

No	Tarih - Date			Zaman - Time			Koordinat - Coordinate			Derinlik - Depth		Magnitüd - Magnitude									
	Gün	Ay	Yıl	Saat	Dak.	San.	Enlem-K	Boylam-D	Ref	Km.	Ref	Ms	Ref	Mb	Ref	Md	Ref	MI	Ref	Mw	Ref
481	14	4	2010	18	13	1.0	37.12	28.98	R	8	R					2.6	R				
482	14	4	2010	19	47	11.6	37.60	26.96	R	6	R					2.7	R				
483	14	4	2010	20	47	3.0	37.44	38.63	R	11	R					2.8	R				
484	14	4	2010	21	31	58.5	37.56	32.20	R	19	R					2.7	R				
485	14	4	2010	21	57	39.0	39.03	26.23	R	6	R					3.2	R				
486	14	4	2010	22	19	41.4	39.56	25.93	R	8	R					2.7	R				
487	14	4	2010	22	25	17.9	38.27	26.27	R	8	R					2.7	R				
488	14	4	2010	22	26	25.2	38.37	26.28	R	5	R					2.5	R				
489	14	4	2010	23	6	14.2	38.82	27.97	R	13	R					2.6	R				
490	14	4	2010	23	13	7.6	38.04	42.25	R	6	R					3.1	R				
491	14	4	2010	23	17	44.5	36.68	28.09	R	10	R					2.9	R				
492	15	4	2010	0	23	59.1	36.79	28.01	R	5	R					2.6	R				
493	15	4	2010	1	32	58.0	39.79	26.10	R	5	R					3.1	R				
494	15	4	2010	1	58	5.4	40.08	33.14	R	12	R					2.9	R				
495	15	4	2010	5	49	2.0	37.24	28.21	R	3	R					2.3	R				
496	15	4	2010	7	17	50.0	37.24	28.17	R	8	R					2.7	R				
497	15	4	2010	8	24	4.8	38.83	38.96	R	11	R					2.6	R				
498	15	4	2010	8	35	14.6	37.21	36.94	R	5	R					3.2	R				
499	15	4	2010	8	48	14.8	37.22	28.25	R	20	R					2.3	R				
500	15	4	2010	8	56	0.9	39.39	38.51	R	25	R					2.8	R				

TÜRKİYE DEPREM ETKİNLİĞİ (2010 YILI NİSAN AYI)

No	Tarih - Date			Zaman - Time			Koordinat - Coordinate			Derinlik - Depth		Magnitüd - Magnitude									
	Gün	Ay	Yıl	Saat	Dak.	San.	Enlem-K	Boylam-D	Ref	Km.	Ref	Ms	Ref	Mb	Ref	Md	Ref	MI	Ref	Mw	Ref
501	15	4	2010	9	34	46.2	39.94	28.85	R	9	R					2.8	R				
502	15	4	2010	9	39	38.1	37.09	27.90	R	27	R					2.6	R				
503	15	4	2010	10	3	21.1	36.84	34.70	R	7	R					2.3	R				
504	15	4	2010	12	3	19.0	40.26	30.00	R	11	R					2.6	R				
505	15	4	2010	12	34	28.8	37.13	27.90	R	14	R					2.4	R				
506	15	4	2010	12	59	10.2	38.15	32.58	R	10	R					2.6	R				
507	15	4	2010	12	59	56.6	37.18	28.35	R	22	R					2.5	R				
508	15	4	2010	13	1	8.5	39.84	39.25	R	21	R					2.8	R				
509	15	4	2010	13	14	38.6	37.51	39.04	R	7	R					2.5	R				
510	15	4	2010	13	31	38.0	39.55	29.06	R	8	R					2.8	R				
511	15	4	2010	13	59	2.3	40.95	39.32	R	5	R					2.8	R				
512	15	4	2010	14	7	54.5	39.03	40.90	R	5	R					2.7	R				
513	15	4	2010	14	27	19.8	38.24	39.32	R	5	R					2.4	R				
514	15	4	2010	14	57	39.5	34.61	33.13	R	5	R							3.1	R		
515	15	4	2010	14	58	35.2	37.15	28.22	R	5	R					2.6	R				
516	15	4	2010	15	6	46.4	38.27	36.35	R	8	R					2.8	R				
517	15	4	2010	15	28	10.7	36.81	36.27	R	5	R					3.1	R				
518	15	4	2010	21	10	20.8	37.98	42.24	R	5	R							3.6	R		
519	15	4	2010	21	33	32.8	34.55	33.12	R	11	R					3.3	R				
520	15	4	2010	22	49	11.8	37.94	36.26	R	5	R					2.8	R				

TÜRKİYE DEPREM ETKİNLİĞİ (2010 YILI NİSAN AYI)

No	Tarih - Date			Zaman - Time			Koordinat - Coordinate			Derinlik - Depth		Magnitüd - Magnitude									
	Gün	Ay	Yıl	Saat	Dak.	San.	Enlem-K	Boylam-D	Ref	Km.	Ref	Ms	Ref	Mb	Ref	Md	Ref	MI	Ref	Mw	Ref
521	15	4	2010	22	51	37.7	38.05	37.97	R	14	R					2.8	R				
522	16	4	2010	2	10	19.7	36.06	27.54	R	17	R					2.9	R				
523	16	4	2010	4	22	28.9	38.96	30.04	R	6	R					2.7	R				
524	16	4	2010	7	22	59.4	37.91	29.28	R	25	R					2.7	R				
525	16	4	2010	7	27	39.7	37.26	28.32	R	3	R					2.5	R				
526	16	4	2010	7	51	23.0	40.72	35.84	R	8	R					2.7	R				
527	16	4	2010	8	17	37.2	37.22	27.87	R	5	R					2.4	R				
528	16	4	2010	9	12	0.6	37.72	37.86	R	4	R					2.9	R				
529	16	4	2010	9	15	22.0	38.67	27.34	R	8	R					2.2	R				
530	16	4	2010	9	42	50.5	37.18	28.15	R	5	R					2.5	R				
531	16	4	2010	9	58	2.0	37.21	27.87	R	8	R					2.6	R				
532	16	4	2010	11	12	3.1	38.49	37.41	R	5	R					2.4	R				
533	16	4	2010	11	15	33.5	39.58	33.24	R	2	R					3.0	R				
534	16	4	2010	11	36	48.7	38.31	39.56	R	13	R					2.6	R				
535	16	4	2010	11	43	27.6	39.51	31.44	R	7	R					2.8	R				
536	16	4	2010	12	7	32.7	40.13	29.47	R	17	R					2.5	R				
537	16	4	2010	12	20	15.4	37.22	35.97	R	5	R					2.8	R				
538	16	4	2010	12	28	49.0	40.55	29.56	R	7	R					2.6	R				
539	16	4	2010	12	45	38.1	40.42	26.91	R	2	R					2.4	R				
540	16	4	2010	12	48	13.3	36.12	32.94	R	3	R					3.0	R				

TÜRKİYE DEPREM ETKİNLİĞİ (2010 YILI NİSAN AYI)

No	Tarih - Date			Zaman - Time			Koordinat - Coordinate			Derinlik - Depth		Magnitüd - Magnitude										
	Gün	Ay	Yıl	Saat	Dak.	San.	Enlem-K	Boylam-D	Ref	Km.	Ref	Ms	Ref	Mb	Ref	Md	Ref	MI	Ref	Mw	Ref	
541	16	4	2010	12	49	28.6	37.62	42.65	R	8	R					2.4	R					
542	16	4	2010	13	4	19.3	39.04	39.67	R	5	R					2.9	R					
543	16	4	2010	13	16	24.5	40.28	34.97	R	19	R					2.6	R					
544	16	4	2010	13	22	16.9	41.03	36.15	R	3	R					2.6	R					
545	16	4	2010	13	34	8.6	40.94	35.99	R	2	R					2.4	R					
546	16	4	2010	13	40	28.6	41.20	36.07	R	5	R					2.0	R					
547	16	4	2010	13	44	19.9	40.06	37.89	R	10	R					3.2	R					
548	16	4	2010	13	48	48.8	38.86	30.65	R	5	R					2.6	R					
549	16	4	2010	14	28	30.1	40.46	32.77	R	22	R					2.4	R					
550	16	4	2010	14	57	51.9	37.58	35.66	R	6	R					2.5	R					
551	16	4	2010	15	20	19.8	38.25	38.10	R	8	R					2.5	R					
552	16	4	2010	15	26	40.7	38.73	40.11	R	5	R					3.1	R					
553	16	4	2010	17	28	4.1	36.95	26.56	R	13	R					2.9	R					
554	16	4	2010	18	18	20.9	37.60	36.48	R	6	R					2.7	R					
555	16	4	2010	19	7	7.2	38.65	30.96	R	5	R					2.7	R					
556	16	4	2010	19	40	11.2	37.25	28.38	R	6	R					2.3	R					
557	16	4	2010	19	41	46.6	37.21	28.24	R	4	R					2.2	R					
558	16	4	2010	19	51	35.2	36.90	29.30	R	8	R					2.9	R					
559	16	4	2010	20	57	49.1	38.62	26.05	R	5	R					2.4	R					
560	16	4	2010	21	35	31.4	39.34	33.10	R	7	R					2.7	R					

TÜRKİYE DEPREM ETKİNLİĞİ (2010 YILI NİSAN AYI)

No	Tarih - Date			Zaman - Time			Koordinat - Coordinate			Derinlik - Depth		Magnitüd - Magnitude									
	Gün	Ay	Yıl	Saat	Dak.	San.	Enlem-K	Boylam-D	Ref	Km.	Ref	Ms	Ref	Mb	Ref	Md	Ref	MI	Ref	Mw	Ref
561	16	4	2010	21	59	22.6	37.08	27.94	R	8	R					2.7	R				
562	16	4	2010	22	16	10.7	40.48	29.04	R	9	R					2.7	R				
563	16	4	2010	22	26	8.9	37.99	27.47	R	10	R					2.6	R				
564	16	4	2010	22	50	46.8	40.69	33.10	R	6	R					2.6	R				
565	17	4	2010	0	1	49.9	36.23	35.63	R	22	R					2.7	R				
566	17	4	2010	0	49	7.8	39.49	33.06	R	5	R					3.0	R				
567	17	4	2010	1	9	15.8	37.57	36.48	R	8	R					2.7	R				
568	17	4	2010	1	32	30.3	39.31	33.01	R	4	R					2.3	R				
569	17	4	2010	2	15	52.8	37.51	36.41	R	8	R					2.5	R				
570	17	4	2010	4	1	22.6	37.68	26.74	R	22	R					2.6	R				
571	17	4	2010	5	36	27.7	37.98	37.77	R	5	R					2.7	R				
572	17	4	2010	6	3	38.8	37.22	28.12	R	5	R					2.6	R				
573	17	4	2010	6	32	55.3	38.57	39.11	R	6	R					2.6	R				
574	17	4	2010	7	53	52.5	37.31	28.32	R	13	R					2.7	R				
575	17	4	2010	7	54	8.2	37.62	36.49	R	8	R					2.8	R				
576	17	4	2010	8	41	3.1	37.26	28.34	R	4	R					2.6	R				
577	17	4	2010	8	48	19.2	39.19	30.43	R	12	R					2.7	R				
578	17	4	2010	8	56	41.6	37.22	28.21	R	5	R					2.8	R				
579	17	4	2010	9	8	15.3	37.37	28.37	R	5	R					2.8	R				
580	17	4	2010	9	20	49.3	39.47	28.13	R	8	R					2.7	R				

TÜRKİYE DEPREM ETKİNLİĞİ (2010 YILI NİSAN AYI)

No	Tarih - Date			Zaman - Time			Koordinat - Coordinate			Derinlik - Depth		Magnitüd - Magnitude										
	Gün	Ay	Yıl	Saat	Dak.	San.	Enlem-K	Boylam-D	Ref	Km.	Ref	Ms	Ref	Mb	Ref	Md	Ref	MI	Ref	Mw	Ref	
581	17	4	2010	9	37	31.4	38.75	40.11	R	5	R					2.7	R					
582	17	4	2010	9	49	47.2	38.67	27.19	R	9	R					2.9	R					
583	17	4	2010	10	0	12.2	39.54	38.59	R	14	R					2.5	R					
584	17	4	2010	10	26	57.0	39.31	27.60	R	6	R					2.8	R					
585	17	4	2010	11	20	24.4	41.04	39.19	R	5	R					2.9	R					
586	17	4	2010	12	29	10.8	37.10	27.92	R	14	R					2.6	R					
587	17	4	2010	12	40	13.5	37.86	30.71	R	4	R							3.9	R			
588	17	4	2010	12	45	18.5	35.55	29.04	R	10	R							3.2	R			
589	17	4	2010	13	14	24.0	39.17	28.39	R	5	R					2.9	R					
590	17	4	2010	13	15	11.5	39.42	36.73	R	5	R					2.9	R					
591	17	4	2010	14	0	2.9	39.38	31.53	R	4	R					2.8	R					
592	17	4	2010	14	23	29.8	37.27	28.30	R	20	R					2.7	R					
593	17	4	2010	14	23	45.6	40.48	37.26	R	5	R					2.9	R					
594	17	4	2010	19	47	22.0	36.44	27.08	R	8	R					2.7	R					
595	17	4	2010	21	8	0.3	39.61	27.12	R	5	R					2.7	R					
596	17	4	2010	22	34	27.9	38.68	39.95	R	6	R					2.7	R					
597	18	4	2010	0	3	9.3	38.72	40.06	R	10	R					3.2	R					
598	18	4	2010	1	21	32.3	39.35	33.25	R	2	R					2.5	R					
599	18	4	2010	1	52	32.3	37.01	27.93	R	7	R					2.6	R					
600	18	4	2010	1	53	12.0	39.83	44.17	R	5	R					2.9	R					

TÜRKİYE DEPREM ETKİNLİĞİ (2010 YILI NİSAN AYI)

No	Tarih - Date			Zaman - Time			Koordinat - Coordinate			Derinlik - Depth		Magnitüd - Magnitude									
	Gün	Ay	Yıl	Saat	Dak.	San.	Enlem-K	Boylam-D	Ref	Km.	Ref	Ms	Ref	Mb	Ref	Md	Ref	MI	Ref	Mw	Ref
601	18	4	2010	2	58	34.0	39.74	25.59	R	5	R					3.1	R				
602	18	4	2010	4	25	54.0	36.30	30.70	R	59	R					3.3	R				
603	18	4	2010	6	13	20.5	39.68	29.07	R	7	R					2.7	R				
604	18	4	2010	6	52	49.9	37.24	28.18	R	5	R					2.7	R				
605	18	4	2010	8	2	41.3	37.27	28.29	R	5	R					2.8	R				
606	18	4	2010	8	8	19.9	37.04	28.42	R	2	R					2.5	R				
607	18	4	2010	8	45	3.8	40.22	29.94	R	5	R					2.2	R				
608	18	4	2010	8	50	1.3	37.23	28.18	R	4	R					2.7	R				
609	18	4	2010	8	53	8.4	37.26	28.26	R	5	R					2.8	R				
610	18	4	2010	8	54	33.8	40.52	33.00	R	4	R					3.1	R				
611	18	4	2010	8	59	19.8	37.21	28.19	R	5	R					2.8	R				
612	18	4	2010	9	5	23.6	39.49	28.17	R	7	R					2.8	R				
613	18	4	2010	9	17	37.9	39.29	27.71	R	7	R					2.8	R				
614	18	4	2010	9	54	51.6	36.52	26.98	R	126	R					2.9	R				
615	18	4	2010	10	50	26.0	37.80	38.19	R	5	R					2.7	R				
616	18	4	2010	13	15	32.9	40.56	32.98	R	5	R					2.9	R				
617	18	4	2010	13	42	48.8	37.16	28.50	R	18	R					2.7	R				
618	18	4	2010	14	26	36.3	38.87	27.84	R	4	R					2.5	R				
619	18	4	2010	14	46	37.9	37.27	28.29	R	10	R					2.6	R				
620	18	4	2010	14	47	52.1	37.29	28.23	R	5	R					2.5	R				

TÜRKİYE DEPREM ETKİNLİĞİ (2010 YILI NİSAN AYI)

No	Tarih - Date			Zaman - Time			Koordinat - Coordinate			Derinlik - Depth		Magnitüd - Magnitude										
	Gün	Ay	Yıl	Saat	Dak.	San.	Enlem-K	Boylam-D	Ref	Km.	Ref	Ms	Ref	Mb	Ref	Md	Ref	MI	Ref	Mw	Ref	
621	18	4	2010	15	23	31.3	34.57	33.05	R	4	R					2.8	R					
622	18	4	2010	15	46	31.8	37.92	31.06	R	7	R							3.5	R			
623	18	4	2010	15	53	45.1	39.14	27.26	R	8	R					2.7	R					
624	18	4	2010	16	40	53.7	39.51	31.49	R	2	R					2.5	R					
625	18	4	2010	18	21	56.2	38.32	27.11	R	3	R					2.5	R					
626	18	4	2010	19	45	7.0	39.35	28.11	R	6	R					2.4	R					
627	18	4	2010	21	21	46.6	34.50	33.08	R	3	R					3.2	R					
628	18	4	2010	21	51	23.6	38.80	40.17	R	6	R					2.6	R					
629	18	4	2010	21	53	56.2	40.57	33.01	R	6	R					3.0	R					
630	18	4	2010	22	25	27.4	37.55	35.53	R	6	R					2.7	R					
631	18	4	2010	23	44	25.5	37.71	35.73	R	10	R					2.9	R					
632	18	4	2010	23	47	34.7	37.78	26.85	R	14	R					2.5	R					
633	19	4	2010	0	13	38.4	40.18	28.93	R	15	R					2.5	R					
634	19	4	2010	0	22	19.8	37.92	32.85	R	10	R					2.7	R					
635	19	4	2010	2	33	34.2	37.95	26.97	R	5	R					2.6	R					
636	19	4	2010	2	41	24.3	37.85	31.19	R	22	R					2.6	R					
637	19	4	2010	2	43	39.6	36.27	27.91	R	30	R					2.8	R					
638	19	4	2010	3	52	51.9	38.13	39.32	R	6	R					2.3	R					
639	19	4	2010	4	22	12.2	37.02	28.97	R	2	R					2.7	R					
640	19	4	2010	5	2	50.3	39.93	26.25	R	5	R					2.9	R					

TÜRKİYE DEPREM ETKİNLİĞİ (2010 YILI NİSAN AYI)

No	Tarih - Date			Zaman - Time			Koordinat - Coordinate			Derinlik - Depth		Magnitüd - Magnitude									
	Gün	Ay	Yıl	Saat	Dak.	San.	Enlem-K	Boylam-D	Ref	Km.	Ref	Ms	Ref	Mb	Ref	Md	Ref	MI	Ref	Mw	Ref
641	19	4	2010	7	23	20.5	37.25	28.18	R	4	R					2.6	R				
642	19	4	2010	8	26	45.4	37.81	32.69	R	4	R					2.5	R				
643	19	4	2010	8	48	24.4	37.24	28.20	R	2	R					2.6	R				
644	19	4	2010	8	54	28.5	37.26	28.21	R	5	R					2.7	R				
645	19	4	2010	8	56	49.7	37.31	30.52	R	5	R					3.0	R				
646	19	4	2010	9	46	0.1	39.15	41.64	R	6	R					2.8	R				
647	19	4	2010	10	2	10.6	38.42	26.55	R	12	R					2.7	R				
648	19	4	2010	10	8	34.7	38.76	26.63	R	9	R					3.3	R				
649	19	4	2010	10	13	13.5	37.19	27.88	R	4	R					2.6	R				
650	19	4	2010	10	31	13.1	38.54	31.59	R	5	R					2.8	R				
651	19	4	2010	11	31	39.3	36.05	28.56	R	28	R					2.8	R	2.7	R		
652	19	4	2010	11	38	22.0	38.84	35.99	R	2	R					2.8	R				
653	19	4	2010	11	41	29.5	39.89	38.96	R	5	R					2.4	R				
654	19	4	2010	11	57	0.7	38.66	39.31	R	12	R					2.5	R				
655	19	4	2010	12	7	34.8	37.28	28.34	R	5	R					2.7	R				
656	19	4	2010	12	31	57.4	37.16	28.18	R	18	R					2.7	R				
657	19	4	2010	12	47	58.8	35.42	33.61	R	71	R					2.9	R				
658	19	4	2010	13	39	11.1	39.43	32.47	R	5	R					2.5	R				
659	19	4	2010	13	41	44.9	39.93	33.12	R	10	R					2.7	R				
660	19	4	2010	14	3	46.0	39.42	38.45	R	21	R					2.8	R				

TÜRKİYE DEPREM ETKİNLİĞİ (2010 YILI NİSAN AYI)

No	Tarih - Date			Zaman - Time			Koordinat - Coordinate			Derinlik - Depth		Magnitüd - Magnitude									
	Gün	Ay	Yıl	Saat	Dak.	San.	Enlem-K	Boylam-D	Ref	Km.	Ref	Ms	Ref	Mb	Ref	Md	Ref	MI	Ref	Mw	Ref
661	19	4	2010	14	17	1.9	37.20	27.86	R	13	R					2.5	R				
662	19	4	2010	14	43	46.4	37.24	28.19	R	6	R					2.6	R				
663	19	4	2010	14	45	58.5	37.27	28.22	R	7	R					2.6	R				
664	19	4	2010	15	11	47.6	39.26	27.92	R	4	R					2.8	R				
665	19	4	2010	15	15	30.3	40.34	27.76	R	5	R					2.5	R				
666	19	4	2010	15	20	53.3	40.46	30.31	R	10	R					2.5	R				
667	19	4	2010	15	24	30.4	37.10	34.39	R	24	R					2.3	R				
668	19	4	2010	15	34	24.1	39.48	28.20	R	8	R					2.8	R				
669	19	4	2010	18	43	43.7	39.01	40.19	R	25	R					2.6	R				
670	19	4	2010	20	15	53.1	38.82	40.20	R	5	R					3.1	R				
671	19	4	2010	20	23	9.9	39.46	27.56	R	12	R					2.8	R				
672	19	4	2010	20	32	34.8	36.93	29.32	R	29	R					2.2	R				
673	19	4	2010	21	6	13.9	34.44	33.55	R	5	R					2.9	R				
674	19	4	2010	21	30	21.8	39.77	43.66	R	3	R					2.8	R				
675	19	4	2010	21	41	42.9	38.49	37.48	R	5	R					2.9	R				
676	19	4	2010	22	59	28.6	39.14	29.37	R	5	R					2.8	R				
677	19	4	2010	23	31	27.6	37.12	36.68	R	5	R					3.0	R				
678	19	4	2010	23	36	7.8	38.12	27.26	R	6	R					2.3	R				
679	20	4	2010	0	53	11.8	38.69	32.97	R	8	R							3.5	R		
680	20	4	2010	1	26	59.3	37.56	35.55	R	5	R					3.1	R				

TÜRKİYE DEPREM ETKİNLİĞİ (2010 YILI NİSAN AYI)

No	Tarih - Date			Zaman - Time			Koordinat - Coordinate			Derinlik - Depth		Magnitüd - Magnitude										
	Gün	Ay	Yıl	Saat	Dak.	San.	Enlem-K	Boylam-D	Ref	Km.	Ref	Ms	Ref	Mb	Ref	Md	Ref	MI	Ref	Mw	Ref	
681	20	4	2010	3	21	4.4	38.02	27.49	R	6	R					2.9	R					
682	20	4	2010	3	44	23.9	37.96	27.49	R	5	R					3.1	R					
683	20	4	2010	3	52	42.2	37.45	33.02	R	5	R					3.0	R					
684	20	4	2010	4	17	36.1	35.93	28.48	R	7	R					2.5	R					
685	20	4	2010	5	0	18.8	39.04	29.45	R	5	R					3.1	R					
686	20	4	2010	5	41	22.2	38.81	38.96	R	15	R					2.8	R					
687	20	4	2010	5	53	28.2	39.15	30.65	R	29	R					2.9	R					
688	20	4	2010	6	8	14.5	37.17	28.15	R	9	R					2.7	R					
689	20	4	2010	8	15	48.1	37.14	28.13	R	2	R					2.7	R					
690	20	4	2010	8	44	42.5	37.29	28.22	R	5	R					2.8	R					
691	20	4	2010	9	0	52.3	36.90	28.11	R	5	R					2.5	R					
692	20	4	2010	10	19	43.5	35.19	33.54	R	5	R					2.9	R					
693	20	4	2010	10	28	8.3	37.16	27.88	R	8	R					2.7	R					
694	20	4	2010	11	4	44.0	37.47	38.97	R	3	R					2.2	R					
695	20	4	2010	12	0	8.0	39.97	33.57	R	5	R					3.1	R					
696	20	4	2010	13	0	53.8	37.96	27.48	R	5	R							3.2	R			
697	20	4	2010	13	16	49.6	39.32	40.91	R	6	R					2.7	R					
698	20	4	2010	13	50	35.4	37.25	28.24	R	3	R					2.8	R					
699	20	4	2010	14	37	54.8	38.02	27.49	R	7	R					2.6	R					
700	20	4	2010	14	46	25.6	39.10	30.65	R	21	R					2.7	R					

TÜRKİYE DEPREM ETKİNLİĞİ (2010 YILI NİSAN AYI)

No	Tarih - Date			Zaman - Time			Koordinat - Coordinate			Derinlik - Depth		Magnitüd - Magnitude										
	Gün	Ay	Yıl	Saat	Dak.	San.	Enlem-K	Boylam-D	Ref	Km.	Ref	Ms	Ref	Mb	Ref	Md	Ref	MI	Ref	Mw	Ref	
701	20	4	2010	15	25	26.8	38.30	27.12	R	2	R					2.4	R					
702	20	4	2010	15	30	25.7	40.76	27.35	R	4	R							3.1	R			
703	20	4	2010	16	57	30.9	37.21	35.67	R	9	R					2.4	R					
704	20	4	2010	17	15	45.1	37.63	28.81	R	19	R					2.7	R					
705	20	4	2010	18	11	29.2	37.68	26.49	R	20	R					2.6	R					
706	20	4	2010	19	0	35.4	38.75	36.59	R	5	R					2.9	R					
707	20	4	2010	20	46	17.1	40.73	33.03	R	6	R					3.0	R					
708	20	4	2010	21	59	40.2	39.03	27.96	R	13	R					2.5	R					
709	20	4	2010	23	9	2.4	40.35	41.49	R	8	R					2.5	R					
710	20	4	2010	23	26	6.5	40.93	31.57	R	5	R					3.1	R					
711	20	4	2010	23	38	58.2	37.02	29.10	R	5	R					2.8	R					
712	20	4	2010	23	58	45.0	40.69	35.32	R	8	R					2.8	R					
713	21	4	2010	0	2	45.3	39.51	27.11	R	5	R					2.9	R					
714	21	4	2010	2	29	6.3	34.73	33.19	R	5	R					2.7	R					
715	21	4	2010	2	34	42.6	38.89	30.15	R	5	R					2.7	R					
716	21	4	2010	5	5	30.5	37.32	26.89	R	8	R					2.7	R					
717	21	4	2010	5	29	9.8	39.04	28.11	R	12	R					2.7	R					
718	21	4	2010	5	40	32.3	40.50	36.74	R	7	R					2.8	R					
719	21	4	2010	6	0	15.8	37.21	28.28	R	16	R					2.5	R					
720	21	4	2010	8	6	47.7	39.64	38.53	R	9	R					2.7	R					

TÜRKİYE DEPREM ETKİNLİĞİ (2010 YILI NİSAN AYI)

No	Tarih - Date			Zaman - Time			Koordinat - Coordinate			Derinlik - Depth		Magnitüd - Magnitude									
	Gün	Ay	Yıl	Saat	Dak.	San.	Enlem-K	Boylam-D	Ref	Km.	Ref	Ms	Ref	Mb	Ref	Md	Ref	MI	Ref	Mw	Ref
721	21	4	2010	8	26	45.6	36.09	29.01	R	3	R					2.8	R				
722	21	4	2010	8	50	2.6	37.11	27.94	R	16	R					2.6	R				
723	21	4	2010	8	56	57.5	37.19	27.90	R	11	R					2.5	R				
724	21	4	2010	9	6	1.3	39.23	27.65	R	5	R					2.7	R				
725	21	4	2010	9	11	39.2	41.12	27.75	R	2	R					2.7	R				
726	21	4	2010	9	16	58.1	37.11	27.91	R	23	R					2.4	R				
727	21	4	2010	10	13	17.4	37.22	28.24	R	2	R					2.5	R				
728	21	4	2010	11	24	31.1	38.95	29.94	R	6	R					2.6	R				
729	21	4	2010	11	32	38.4	37.26	28.21	R	15	R					2.5	R				
730	21	4	2010	11	42	4.1	37.13	28.38	R	26	R					2.8	R				
731	21	4	2010	11	44	39.9	38.30	38.26	R	5	R					2.8	R				
732	21	4	2010	11	53	30.3	40.25	32.25	R	29	R					2.7	R				
733	21	4	2010	11	58	21.6	37.21	28.47	R	18	R					2.6	R				
734	21	4	2010	12	35	18.0	39.59	38.57	R	21	R					2.7	R				
735	21	4	2010	12	58	15.4	38.43	29.72	R	16	R					2.6	R				
736	21	4	2010	12	58	37.8	38.72	36.45	R	5	R					3.0	R				
737	21	4	2010	13	27	8.6	39.86	40.79	R	5	R					3.4	R	3.3	R		
738	21	4	2010	14	46	33.1	39.62	27.61	R	5	R					2.7	R				
739	21	4	2010	15	27	23.1	36.36	35.45	R	12	R					2.7	R				
740	21	4	2010	16	26	32.6	39.60	27.98	R	16	R					2.5	R				

TÜRKİYE DEPREM ETKİNLİĞİ (2010 YILI NİSAN AYI)

No	Tarih - Date			Zaman - Time			Koordinat - Coordinate			Derinlik - Depth		Magnitüd - Magnitude									
	Gün	Ay	Yıl	Saat	Dak.	San.	Enlem-K	Boylam-D	Ref	Km.	Ref	Ms	Ref	Mb	Ref	Md	Ref	MI	Ref	Mw	Ref
741	21	4	2010	16	46	1.1	36.49	35.15	R	10	R					2.4	R				
742	21	4	2010	17	23	37.0	37.06	28.96	R	10	R					2.6	R				
743	21	4	2010	19	39	31.8	39.61	27.55	R	10	R					2.7	R				
744	21	4	2010	19	46	26.1	40.34	33.74	R	5	R					2.7	R				
745	21	4	2010	19	58	22.9	40.39	26.92	R	23	R					2.4	R				
746	21	4	2010	20	12	30.9	38.63	30.23	R	4	R					2.7	R				
747	21	4	2010	20	32	29.3	38.61	38.11	R	16	R					2.6	R				
748	21	4	2010	21	2	16.2	35.72	26.91	R	12	R					3.2	R				
749	21	4	2010	21	12	50.2	37.51	36.71	R	8	R					2.7	R				
750	21	4	2010	21	34	30.9	38.94	29.47	R	10	R					2.5	R				
751	21	4	2010	22	28	50.7	39.83	40.79	R	5	R					2.9	R				
752	21	4	2010	23	7	27.9	38.59	41.38	R	8	R					3.0	R				
753	21	4	2010	23	12	15.8	38.58	41.42	R	8	R					2.8	R				
754	22	4	2010	0	7	5.0	38.71	36.57	R	5	R					2.8	R				
755	22	4	2010	0	13	32.3	38.61	41.46	R	5	R					2.7	R				
756	22	4	2010	0	15	37.1	37.81	35.10	R	5	R					3.0	R				
757	22	4	2010	2	7	52.5	37.62	37.30	R	5	R					2.9	R				
758	22	4	2010	2	43	6.8	39.95	41.32	R	5	R					2.3	R				
759	22	4	2010	3	6	11.0	37.01	28.89	R	3	R					2.5	R				
760	22	4	2010	3	10	28.6	37.00	34.92	R	12	R					2.2	R				

TÜRKİYE DEPREM ETKİNLİĞİ (2010 YILI NİSAN AYI)

No	Tarih - Date			Zaman - Time			Koordinat - Coordinate			Derinlik - Depth		Magnitüd - Magnitude									
	Gün	Ay	Yıl	Saat	Dak.	San.	Enlem-K	Boylam-D	Ref	Km.	Ref	Ms	Ref	Mb	Ref	Md	Ref	MI	Ref	Mw	Ref
761	22	4	2010	3	14	34.5	37.06	28.98	R	12	R					2.4	R				
762	22	4	2010	4	37	59.7	37.03	34.53	R	4	R					2.3	R				
763	22	4	2010	6	13	52.5	37.14	28.19	R	5	R					2.2	R				
764	22	4	2010	6	15	24.6	39.60	29.28	R	25	R					2.4	R				
765	22	4	2010	6	38	49.5	38.36	28.12	R	5	R					2.3	R				
766	22	4	2010	6	45	6.1	37.15	28.26	R	12	R					2.3	R				
767	22	4	2010	8	46	3.9	39.24	30.54	R	10	R					2.7	R				
768	22	4	2010	9	39	52.6	37.40	27.96	R	5	R					2.2	R				
769	22	4	2010	9	53	59.5	39.30	27.65	R	15	R					2.9	R				
770	22	4	2010	10	3	8.2	39.28	27.90	R	9	R					2.5	R				
771	22	4	2010	10	5	34.2	39.30	27.69	R	9	R					2.3	R				
772	22	4	2010	10	9	26.6	39.65	30.67	R	13	R					2.5	R				
773	22	4	2010	11	5	6.3	38.74	27.96	R	5	R					2.4	R				
774	22	4	2010	11	32	18.1	38.47	38.91	R	17	R					2.4	R				
775	22	4	2010	12	28	18.9	37.18	28.19	R	10	R					2.3	R				
776	22	4	2010	13	23	43.4	37.20	28.15	R	7	R					2.3	R				
777	22	4	2010	13	24	36.4	37.18	27.89	R	16	R					2.2	R				
778	22	4	2010	14	35	13.4	36.90	39.30	R	5	R					2.7	R				
779	22	4	2010	14	45	46.3	40.78	34.91	R	8	R					2.8	R				
780	22	4	2010	14	47	51.5	39.24	30.54	R	8	R					2.7	R				

TÜRKİYE DEPREM ETKİNLİĞİ (2010 YILI NİSAN AYI)

No	Tarih - Date			Zaman - Time			Koordinat - Coordinate			Derinlik - Depth		Magnitüd - Magnitude									
	Gün	Ay	Yıl	Saat	Dak.	San.	Enlem-K	Boylam-D	Ref	Km.	Ref	Ms	Ref	Mb	Ref	Md	Ref	MI	Ref	Mw	Ref
781	22	4	2010	14	50	28.2	37.24	28.21	R	15	R					2.5	R				
782	22	4	2010	14	52	39.8	38.20	27.41	R	14	R					2.5	R				
783	22	4	2010	14	54	19.4	39.30	38.26	R	18	R					2.7	R				
784	22	4	2010	15	12	43.8	39.58	28.20	R	9	R					2.8	R				
785	22	4	2010	15	30	18.6	39.12	29.12	R	5	R					2.9	R				
786	22	4	2010	15	54	36.0	38.25	38.75	R	9	R					2.8	R				
787	22	4	2010	15	57	15.8	40.16	29.09	R	5	R					1.9	R				
788	22	4	2010	16	0	52.2	39.86	41.34	R	5	R					2.9	R				
789	22	4	2010	16	17	30.4	36.86	27.60	R	6	R					2.6	R				
790	22	4	2010	16	21	1.9	37.62	32.11	R	10	R					2.4	R				
791	22	4	2010	17	45	36.4	38.51	28.30	R	5	R					2.4	R				
792	22	4	2010	17	46	21.2	40.09	29.42	R	6	R					2.5	R				
793	22	4	2010	19	15	41.6	37.90	27.17	R	2	R					3.1	R				
794	22	4	2010	22	23	6.3	36.96	28.32	R	20	R					2.5	R				
795	22	4	2010	22	53	39.5	39.95	41.37	R	5	R					2.9	R				
796	23	4	2010	0	4	29.8	38.85	27.87	R	11	R					2.6	R				
797	23	4	2010	0	49	36.2	37.63	30.07	R	2	R					2.8	R				
798	23	4	2010	0	52	19.2	36.84	29.21	R	5	R					2.3	R				
799	23	4	2010	1	7	11.2	38.29	39.31	R	5	R					2.8	R				
800	23	4	2010	1	44	9.1	40.35	27.33	R	16	R					2.1	R				

TÜRKİYE DEPREM ETKİNLİĞİ (2010 YILI NİSAN AYI)

No	Tarih - Date			Zaman - Time			Koordinat - Coordinate			Derinlik - Depth		Magnitüd - Magnitude									
	Gün	Ay	Yıl	Saat	Dak.	San.	Enlem-K	Boylam-D	Ref	Km.	Ref	Ms	Ref	Mb	Ref	Md	Ref	MI	Ref	Mw	Ref
801	23	4	2010	3	2	43.9	37.86	26.75	R	5	R					3.2	R				
802	23	4	2010	4	5	58.5	40.74	30.03	R	10	R					2.8	R				
803	23	4	2010	4	15	47.0	38.68	40.30	R	4	R					2.6	R				
804	23	4	2010	4	19	23.2	40.49	29.26	R	5	R					2.2	R				
805	23	4	2010	4	56	10.7	37.14	34.75	R	6	R					2.4	R				
806	23	4	2010	6	22	51.4	37.26	28.21	R	6	R					2.7	R				
807	23	4	2010	7	45	41.1	37.16	28.15	R	5	R					2.7	R				
808	23	4	2010	8	3	48.1	39.85	42.75	R	5	R					2.8	R				
809	23	4	2010	8	40	3.4	37.20	27.89	R	5	R					2.6	R				
810	23	4	2010	8	45	5.4	37.23	28.26	R	18	R					2.8	R				
811	23	4	2010	9	17	4.1	38.77	40.03	R	5	R					2.9	R				
812	23	4	2010	10	24	22.2	39.33	41.05	R	23	R					2.7	R				
813	23	4	2010	10	56	7.0	40.02	26.94	R	8	R					2.8	R				
814	23	4	2010	11	7	9.7	40.33	27.07	R	19	R					2.2	R				
815	23	4	2010	12	40	23.3	40.64	26.64	R	11	R					1.8	R				
816	23	4	2010	12	54	38.8	37.17	27.88	R	8	R					2.5	R				
817	23	4	2010	13	11	3.4	37.62	34.72	R	14	R					2.5	R				
818	23	4	2010	14	4	0.0	38.50	26.76	R	10	R					2.8	R				
819	23	4	2010	14	56	9.5	39.41	36.35	R	22	R					2.8	R				
820	23	4	2010	16	48	47.0	38.11	29.97	R	4	R							3.2	R		

TÜRKİYE DEPREM ETKİNLİĞİ (2010 YILI NİSAN AYI)

No	Tarih - Date			Zaman - Time			Koordinat - Coordinate			Derinlik - Depth		Magnitüd - Magnitude										
	Gün	Ay	Yıl	Saat	Dak.	San.	Enlem-K	Boylam-D	Ref	Km.	Ref	Ms	Ref	Mb	Ref	Md	Ref	MI	Ref	Mw	Ref	
821	23	4	2010	17	32	45.5	38.89	39.11	R	24	R					2.6	R					
822	23	4	2010	18	42	16.0	36.19	32.24	R	10	R					3.3	R	3.3	R			
823	23	4	2010	18	45	51.6	39.34	26.38	R	12	R					2.8	R					
824	23	4	2010	18	51	49.0	40.20	41.41	R	5	R					2.7	R					
825	23	4	2010	19	28	41.2	37.14	34.73	R	5	R					3.0	R					
826	23	4	2010	21	54	40.2	37.08	28.02	R	19	R					2.5	R					
827	23	4	2010	22	28	21.9	36.94	35.02	R	6	R					2.4	R					
828	23	4	2010	23	20	35.6	37.02	27.68	R	5	R					2.9	R					
829	23	4	2010	23	45	19.2	39.55	32.27	R	26	R					2.6	R					
830	23	4	2010	23	54	56.7	39.20	26.80	R	12	R					2.8	R					
831	24	4	2010	0	9	48.7	38.19	26.98	R	10	R					2.4	R					
832	24	4	2010	0	29	15.4	38.91	26.47	R	24	R					2.8	R					
833	24	4	2010	0	50	57.8	39.55	27.01	R	9	R					2.9	R					
834	24	4	2010	0	54	26.0	37.85	27.28	R	18	R					2.8	R					
835	24	4	2010	1	25	5.7	37.11	34.78	R	16	R					2.7	R					
836	24	4	2010	3	17	2.5	39.59	42.49	R	9	R					2.9	R					
837	24	4	2010	3	38	1.8	38.66	39.92	R	5	R					2.8	R					
838	24	4	2010	5	15	7.2	38.81	40.14	R	2	R							3.9	R			
839	24	4	2010	5	46	29.7	38.74	40.02	R	6	R					2.8	R					
840	24	4	2010	6	10	38.4	39.24	28.20	R	10	R					3.0	R					

TÜRKİYE DEPREM ETKİNLİĞİ (2010 YILI NİSAN AYI)

No	Tarih - Date			Zaman - Time			Koordinat - Coordinate			Derinlik - Depth		Magnitüd - Magnitude									
	Gün	Ay	Yıl	Saat	Dak.	San.	Enlem-K	Boylam-D	Ref	Km.	Ref	Ms	Ref	Mb	Ref	Md	Ref	MI	Ref	Mw	Ref
841	24	4	2010	6	34	11.4	37.16	34.75	R	8	R					2.4	R				
842	24	4	2010	8	25	43.0	37.13	27.91	R	24	R					2.6	R				
843	24	4	2010	8	46	6.3	37.26	28.30	R	13	R					2.8	R				
844	24	4	2010	8	52	44.4	37.23	28.29	R	2	R					2.7	R				
845	24	4	2010	9	8	25.3	39.28	27.80	R	7	R					2.8	R				
846	24	4	2010	9	16	20.8	39.29	27.67	R	2	R					2.7	R				
847	24	4	2010	10	36	4.5	38.19	32.71	R	28	R					2.5	R				
848	24	4	2010	11	27	38.5	39.29	27.62	R	14	R					2.9	R				
849	24	4	2010	12	25	35.6	38.90	37.32	R	12	R					3.0	R				
850	24	4	2010	12	51	31.9	37.27	28.25	R	3	R					2.5	R				
851	24	4	2010	13	14	57.2	37.18	27.87	R	5	R					2.7	R				
852	24	4	2010	13	16	47.1	37.19	27.91	R	14	R					2.6	R				
853	24	4	2010	13	36	24.2	39.26	38.49	R	18	R					2.9	R				
854	24	4	2010	14	50	45.0	37.26	28.19	R	4	R					2.6	R				
855	24	4	2010	15	1	12.6	34.45	26.01	N	34	N			5.3	N						
856	24	4	2010	15	21	49.9	38.68	35.80	R	3	R					2.9	R				
857	24	4	2010	15	29	13.7	40.74	30.64	R	5	R							3.2	R		
858	24	4	2010	16	13	18.8	40.85	34.59	R	23	R					2.7	R				
859	24	4	2010	16	45	21.9	36.22	35.86	R	18	R					3.0	R				
860	24	4	2010	17	21	59.1	38.52	28.63	R	5	R					2.8	R				

TÜRKİYE DEPREM ETKİNLİĞİ (2010 YILI NİSAN AYI)

No	Tarih - Date			Zaman - Time			Koordinat - Coordinate			Derinlik - Depth		Magnitüd - Magnitude									
	Gün	Ay	Yıl	Saat	Dak.	San.	Enlem-K	Boylam-D	Ref	Km.	Ref	Ms	Ref	Mb	Ref	Md	Ref	MI	Ref	Mw	Ref
861	24	4	2010	17	29	33.6	39.21	28.28	R	3	R					3.0	R				
862	24	4	2010	17	32	46.7	37.98	27.50	R	5	R					2.8	R				
863	24	4	2010	18	44	11.9	38.93	40.05	R	8	R					2.7	R				
864	24	4	2010	19	54	22.5	37.95	27.45	R	6	R					3.1	R				
865	24	4	2010	20	58	23.4	37.87	27.16	R	10	R					2.7	R				
866	24	4	2010	22	33	4.1	37.72	26.91	R	6	R					2.6	R				
867	24	4	2010	23	27	58.8	38.17	30.90	R	3	R							3.5	R		
868	24	4	2010	23	50	23.0	34.53	32.39	R	7	R					3.3	R				
869	24	4	2010	23	55	58.1	36.07	29.03	R	6	R					3.0	R				
870	25	4	2010	0	12	10.0	40.73	30.63	R	19	R					2.6	R				
871	25	4	2010	0	12	28.1	40.39	27.68	R	13	R					2.9	R				
872	25	4	2010	0	51	22.7	38.77	40.14	R	10	R					2.7	R				
873	25	4	2010	1	30	42.8	36.92	29.37	R	5	R							3.0	R		
874	25	4	2010	3	14	49.2	39.26	28.27	R	5	R					2.9	R				
875	25	4	2010	3	52	4.9	34.72	32.67	R	8	R					2.9	R				
876	25	4	2010	5	51	38.8	39.65	27.45	R	8	R					2.8	R				
877	25	4	2010	7	42	15.6	37.26	28.19	R	5	R					2.7	R				
878	25	4	2010	8	47	16.7	37.16	28.19	R	2	R					2.7	R				
879	25	4	2010	9	39	27.7	39.16	27.87	R	5	R					2.9	R				
880	25	4	2010	10	47	9.8	38.91	26.81	R	11	R					2.8	R				

TÜRKİYE DEPREM ETKİNLİĞİ (2010 YILI NİSAN AYI)

No	Tarih - Date			Zaman - Time			Koordinat - Coordinate			Derinlik - Depth		Magnitüd - Magnitude									
	Gün	Ay	Yıl	Saat	Dak.	San.	Enlem-K	Boylam-D	Ref	Km.	Ref	Ms	Ref	Mb	Ref	Md	Ref	MI	Ref	Mw	Ref
881	25	4	2010	12	8	42.1	39.42	33.00	R	2	R					2.8	R				
882	25	4	2010	12	8	52.2	37.30	28.21	R	5	R					2.7	R				
883	25	4	2010	12	22	29.3	40.09	32.55	R	5	R					2.8	R				
884	25	4	2010	14	43	49.0	37.26	28.18	R	6	R					2.7	R				
885	25	4	2010	17	47	20.7	40.77	30.69	R	5	R					2.8	R				
886	25	4	2010	20	38	53.7	38.79	40.17	R	5	R					2.7	R				
887	25	4	2010	20	46	29.8	37.48	38.64	R	3	R					2.9	R				
888	25	4	2010	22	33	23.4	36.47	28.62	R	20	R					2.7	R				
889	26	4	2010	1	27	34.5	37.19	35.95	R	14	R					2.7	R				
890	26	4	2010	2	2	53.4	37.06	29.25	R	11	R					2.5	R				
891	26	4	2010	4	2	41.2	38.29	30.13	R	3	R					2.9	R				
892	26	4	2010	4	26	28.3	38.25	32.58	R	2	R					2.6	R				
893	26	4	2010	5	57	30.7	37.22	28.21	R	11	R					2.6	R				
894	26	4	2010	6	31	18.9	37.59	35.72	R	8	R					2.5	R				
895	26	4	2010	7	11	36.0	36.17	28.84	R	8	R					2.7	R				
896	26	4	2010	8	55	53.7	37.26	28.20	R	9	R					2.7	R				
897	26	4	2010	9	25	23.9	37.22	27.89	R	16	R					2.6	R				
898	26	4	2010	10	26	50.1	34.95	26.35	N	10	N			4.4	N			4.0	R		
899	26	4	2010	11	57	24.7	40.24	29.96	R	4	R					2.1	R				
900	26	4	2010	12	24	36.9	37.26	27.88	R	16	R					2.3	R				

TÜRKİYE DEPREM ETKİNLİĞİ (2010 YILI NİSAN AYI)

No	Tarih - Date			Zaman - Time			Koordinat - Coordinate			Derinlik - Depth		Magnitüd - Magnitude									
	Gün	Ay	Yıl	Saat	Dak.	San.	Enlem-K	Boylam-D	Ref	Km.	Ref	Ms	Ref	Mb	Ref	Md	Ref	MI	Ref	Mw	Ref
901	26	4	2010	12	49	26.9	37.27	28.22	R	5	R					2.7	R				
902	26	4	2010	13	3	30.8	40.02	37.92	R	16	R					2.8	R				
903	26	4	2010	14	6	28.0	39.14	29.11	R	5	R					3.1	R				
904	26	4	2010	14	46	41.2	37.31	28.30	R	5	R					2.5	R				
905	26	4	2010	14	49	25.2	37.20	28.17	R	3	R					2.4	R				
906	26	4	2010	15	23	29.5	39.29	29.12	R	6	R					2.7	R				
907	26	4	2010	18	29	29.0	40.13	38.98	R	32	R					2.6	R				
908	26	4	2010	19	39	35.6	37.03	28.43	R	6	R					2.4	R				
909	26	4	2010	19	40	22.9	39.27	29.34	R	4	R					2.5	R				
910	26	4	2010	19	54	41.3	36.12	43.56	R	5	R					3.4	R				
911	26	4	2010	20	59	26.2	34.53	31.27	R	12	R					3.4	R				
912	26	4	2010	21	4	18.9	37.76	30.24	R	7	R					2.5	R				
913	26	4	2010	21	42	53.4	36.99	28.40	R	6	R					2.5	R				
914	26	4	2010	22	20	28.7	38.03	37.94	R	8	R					3.0	R				
915	27	4	2010	9	24	32.3	40.57	29.25	R	6	R					2.4	R				
916	27	4	2010	11	55	49.1	38.70	27.72	R	5	R							2.7	R		
917	27	4	2010	13	36	7.5	39.91	29.93	R	5	R					2.6	R				
918	27	4	2010	14	1	11.6	36.09	26.34	R	7	R					3.7	R	3.3	R		
919	27	4	2010	14	45	5.7	38.13	32.68	R	9	R					2.5	R				
920	27	4	2010	15	0	31.2	37.21	27.87	R	8	R					2.4	R				

TÜRKİYE DEPREM ETKİNLİĞİ (2010 YILI NİSAN AYI)

No	Tarih - Date			Zaman - Time			Koordinat - Coordinate			Derinlik - Depth		Magnitüd - Magnitude									
	Gün	Ay	Yıl	Saat	Dak.	San.	Enlem-K	Boylam-D	Ref	Km.	Ref	Ms	Ref	Mb	Ref	Md	Ref	MI	Ref	Mw	Ref
921	27	4	2010	15	5	4.6	39.25	27.55	R	3	R					2.4	R				
922	27	4	2010	15	33	16.8	39.66	38.88	R	6	R					2.1	R				
923	27	4	2010	15	58	14.1	39.63	40.24	R	4	R					2.8	R				
924	27	4	2010	19	58	11.5	38.81	40.13	R	5	R					3.0	R				
925	27	4	2010	22	19	31.6	39.45	33.07	R	5	R					2.9	R				
926	27	4	2010	22	44	20.9	36.31	28.50	R	30	R					2.8	R				
927	28	4	2010	1	1	35.4	39.06	28.01	R	19	R					2.8	R				
928	28	4	2010	1	26	21.1	37.00	28.33	R	16	R					2.4	R				
929	28	4	2010	1	44	33.5	37.06	28.43	R	13	R					2.9	R				
930	28	4	2010	2	32	42.4	39.16	26.87	R	11	R					2.9	R				
931	28	4	2010	2	51	5.9	38.75	29.80	R	5	R					2.9	R				
932	28	4	2010	3	40	16.6	39.14	26.88	R	9	R					3.0	R				
933	28	4	2010	4	33	55.0	38.22	29.76	R	18	R					2.7	R				
934	28	4	2010	5	49	39.2	41.38	40.18	R	6	R							3.4	R		
935	28	4	2010	8	54	52.4	38.23	29.74	R	18	R					2.5	R				
936	28	4	2010	10	24	15.7	37.97	27.87	R	6	R							3.1	R		
937	28	4	2010	10	56	15.7	38.49	34.10	R	4	R					2.8	R				
938	28	4	2010	11	51	44.8	38.23	31.06	R	7	R					2.8	R				
939	28	4	2010	12	27	27.2	38.72	35.80	R	5	R					2.7	R				
940	28	4	2010	14	49	30.8	39.91	33.10	R	5	R					2.5	R				

TÜRKİYE DEPREM ETKİNLİĞİ (2010 YILI NİSAN AYI)

No	Tarih - Date			Zaman - Time			Koordinat - Coordinate			Derinlik - Depth		Magnitüd - Magnitude									
	Gün	Ay	Yıl	Saat	Dak.	San.	Enlem-K	Boylam-D	Ref	Km.	Ref	Ms	Ref	Mb	Ref	Md	Ref	MI	Ref	Mw	Ref
941	28	4	2010	14	54	1.3	40.55	43.13	R	14	R					2.7	R				
942	28	4	2010	15	13	18.1	38.74	40.08	R	6	R					2.7	R				
943	28	4	2010	16	35	10.4	36.32	27.66	N	42	N			4.4	N			4.3	R		
944	28	4	2010	18	5	8.4	37.82	26.57	R	19	R					2.8	R				
945	28	4	2010	23	3	22.6	39.78	25.66	R	4	R					2.8	R				
946	29	4	2010	0	16	53.3	39.87	40.19	R	6	R					2.8	R				
947	29	4	2010	3	25	6.0	39.83	40.79	R	5	R					2.9	R				
948	29	4	2010	4	28	27.1	35.54	31.22	R	32	R					3.3	R				
949	29	4	2010	6	13	36.9	36.35	35.03	R	10	R					2.9	R				
950	29	4	2010	7	51	40.5	37.20	28.17	R	3	R					2.4	R				
951	29	4	2010	8	42	35.2	37.26	28.29	R	6	R					2.6	R				
952	29	4	2010	9	14	13.1	39.43	28.31	R	11	R					3.3	R				
953	29	4	2010	9	19	38.9	35.72	27.94	R	7	R					2.9	R				
954	29	4	2010	10	32	56.1	35.72	27.54	N	10	N			4.4	N						
955	29	4	2010	13	28	4.5	35.94	27.45	R	16	R					3.1	R				
956	29	4	2010	13	40	31.1	36.52	38.43	R	4	R					3.0	R				
957	29	4	2010	17	1	54.9	37.42	36.97	R	5	R					2.6	R				
958	29	4	2010	18	18	5.1	39.12	29.07	R	5	R					2.8	R				
959	29	4	2010	19	31	57.7	38.93	29.32	R	5	R					2.8	R				
960	29	4	2010	19	45	12.0	38.06	30.06	R	12	R					2.9	R				

TÜRKİYE DEPREM ETKİNLİĞİ (2010 YILI NİSAN AYI)

No	Tarih - Date			Zaman - Time			Koordinat - Coordinate			Derinlik - Depth		Magnitüd - Magnitude										
	Gün	Ay	Yıl	Saat	Dak.	San.	Enlem-K	Boylam-D	Ref	Km.	Ref	Ms	Ref	Mb	Ref	Md	Ref	MI	Ref	Mw	Ref	
961	29	4	2010	22	23	26.5	37.07	28.53	R	8	R					2.5	R					
962	30	4	2010	1	38	46.6	39.18	29.48	R	5	R					2.9	R					
963	30	4	2010	1	39	28.4	37.56	35.70	R	2	R					3.0	R					
964	30	4	2010	6	20	33.1	39.07	29.10	R	6	R					2.4	R					
965	30	4	2010	7	1	0.8	37.23	28.19	R	2	R					2.6	R					
966	30	4	2010	7	31	8.2	37.25	27.88	R	5	R					2.4	R					
967	30	4	2010	8	49	50.6	37.27	28.17	R	6	R					2.7	R					
968	30	4	2010	9	35	0.3	37.12	35.99	R	14	R							3.2	R			
969	30	4	2010	10	28	17.3	37.11	38.91	R	5	R					3.0	R					
970	30	4	2010	11	0	24.2	37.32	28.27	R	5	R					2.7	R					
971	30	4	2010	11	14	8.0	37.05	30.08	R	5	R					2.6	R					
972	30	4	2010	11	41	30.0	40.75	31.56	R	12	R					2.6	R					
973	30	4	2010	11	54	16.4	38.66	37.46	R	6	R					2.6	R					
974	30	4	2010	11	55	35.8	37.27	28.22	R	5	R					2.6	R					
975	30	4	2010	12	21	42.0	38.16	38.59	R	5	R					2.8	R					
976	30	4	2010	12	45	36.2	38.46	39.07	R	9	R					3.1	R					
977	30	4	2010	12	46	21.9	41.49	36.05	R	8	R					3.0	R					
978	30	4	2010	13	36	42.2	40.18	25.37	R	8	R					2.7	R	2.7	R			
979	30	4	2010	13	40	21.9	37.49	41.52	R	15	R					2.7	R					
980	30	4	2010	13	46	8.6	41.66	34.87	R	5	R					2.4	R					

TÜRKİYE DEPREM ETKİNLİĞİ (2010 YILI NİSAN AYI)

No	Tarih - Date			Zaman - Time			Koordinat - Coordinate			Derinlik - Depth		Magnitüd - Magnitude									
	Gün	Ay	Yıl	Saat	Dak.	San.	Enlem-K	Boylam-D	Ref	Km.	Ref	Ms	Ref	Mb	Ref	Md	Ref	MI	Ref	Mw	Ref
981	30	4	2010	13	54	58.1	41.59	34.84	R	28	R					2.5	R				
982	30	4	2010	14	15	19.4	41.13	34.71	R	8	R					2.6	R				
983	30	4	2010	14	40	9.2	39.10	29.03	R	4	R					2.9	R				
984	30	4	2010	15	12	53.5	39.99	28.08	R	10	R					2.6	R				
985	30	4	2010	16	36	54.4	39.94	32.75	R	2	R							3.5	R		
986	30	4	2010	16	41	28.5	38.35	31.84	R	2	R					2.6	R				
987	30	4	2010	17	2	59.6	37.41	38.86	R	5	R							3.5	R		
988	30	4	2010	17	9	15.1	38.42	28.76	R	7	R					2.5	R				
989	30	4	2010	22	9	33.5	40.34	40.69	R	6	R					2.5	R				
990	30	4	2010	22	12	27.7	38.92	38.10	R	2	R					2.0	R				