



Kandilli Rasathanesi Ve Deprem Araştırma Enstitüsü

ULUSAL DEPREM İZLEME MERKEZİ



***2010 MART AYI
BÜLTENİ***

***YIL: 7 - SAYI: 75
İSTANBUL***

Hazırlayan ve Katkıda Bulunanlar

D. Kalafat

K. Kekovalı

K. Kılıç

Y. Güneş

Z. Öğütçü

M. Kara

M. Yilmazer

M. Suvarıklı

E. Görgün

M. Çomoğlu

A. Küsmezer

F. Bekler

P. Deniz

A. Berberoğlu

M. Berberoğlu

S. Poyraz

D. Kepekçi

R. Polat

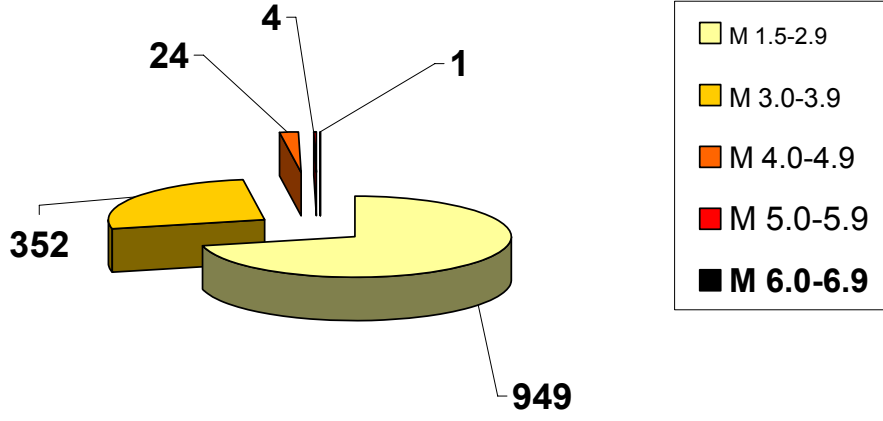
M.F. Akkoyunlu

Ö. Çok

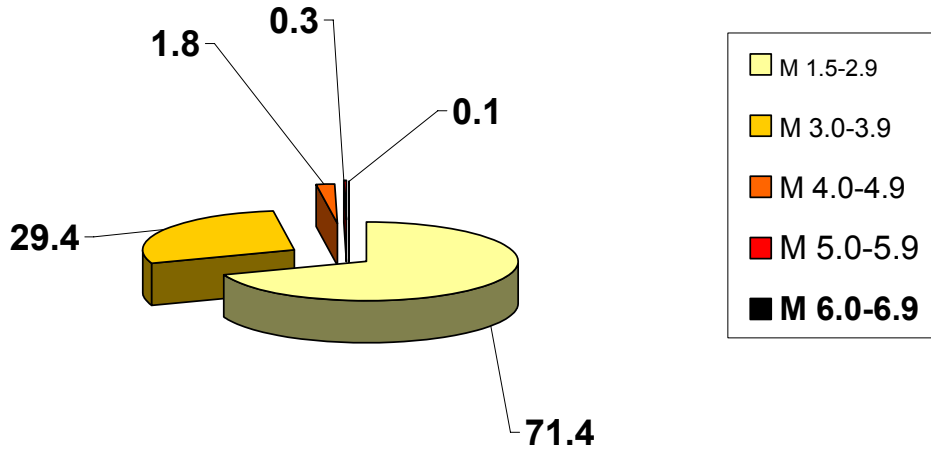
2010 yılı Mart ayında meydana gelen depremlerin
istatistiksel dağılımı

MAGNİTÜD ARALIĞI	TOPLAM
1.5-2.9	949
3.0-3.9	352
4.0-4.9	24
5.0-5.9	4
6.0-6.9	1
7.0-7.9	—
TOPLAM	1330

2010 MART AYI DEPREMLERİNİN İSTATİSTİKSEL DAĞILIMI
(Toplam: 1330 Adet)



2010 MART AYI DEPREMLERİNİN İSTATİSTİKSEL DAĞILIMI (%)



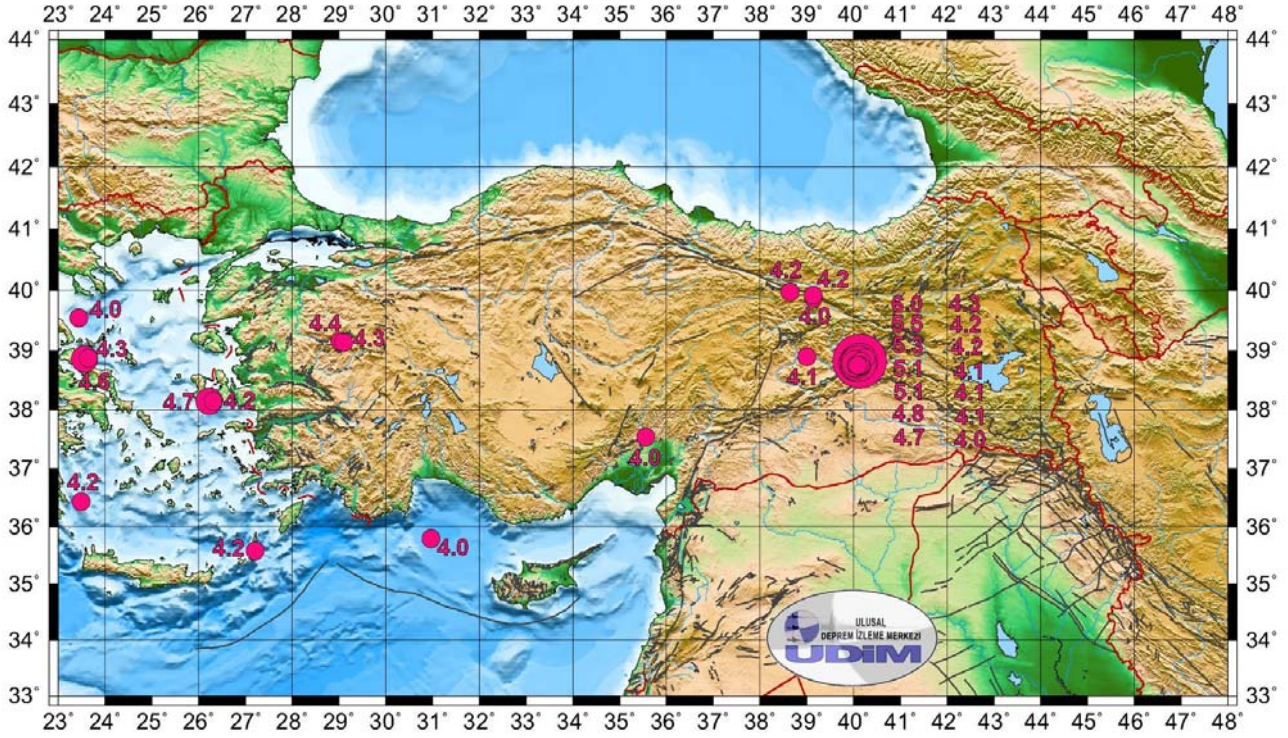
DEĞERLENDİRME

Mart ayında toplam 1330 depremin çözümlü yapılmıştır. Büyüklüğü 4.0 ve üzerinde olan deprem sayısı 29 adettir. Toplam meydana gelen depremlerin % 71.4 oranını büyüklükleri M=1.5-2.9 arasındaki depremler oluşturmaktadır.

Mart ayındaki en önemli depremler ;

Gün	Ay	Yıl	Saat (GMT) hh:mm ss.s	Enlem (N)	Boylam (E)	Derinlik (Km.)	M	Yer
8	3	2010	02:32 31.1	38.83	40.13	2	6.0	BAŞYURT-KARAKOÇAN (ELAZIĞ)
8	3	2010	07:47 38.2	38.78	40.06	5	5.5	BAŞYURT-KARAKOÇAN (ELAZIĞ)
8	3	2010	11:12 10.5	38.79	40.09	5	5.3	BAŞYURT-KARAKOÇAN (ELAZIĞ)
8	3	2010	10:14 23.6	38.83	40.13	5	5.1	BAŞYURT-KARAKOÇAN (ELAZIĞ)
24	3	2010	14:11 30.4	38.78	40.11	5	5.1	BAŞYURT-KARAKOÇAN (ELAZIĞ)
8	3	2010	09:00 45.9	38.76	40.08	5	4.8	BAŞYURT-KARAKOÇAN (ELAZIĞ)
8	3	2010	15:04 51.4	38.78	40.03	5	4.7	BAŞYURT-KARAKOÇAN (ELAZIĞ)
26	3	2010	18:35 53	38.15	26.22	11	4.7	ÇEŞME AÇIKLARI-İZMİR (EGE DENİZİ)
9	3	2010	02:55 5.4	38.86	23.56	33	4.6	YUNANİSTAN
2	3	2010	00:43 13.8	39.16	29.02	8	4.4	SİMAV (KÜTAHYA)
2	3	2010	00:59 43.1	39.14	29.10	7	4.3	SİMAV (KÜTAHYA)
8	3	2010	08:11 20.7	38.76	40.06	2	4.3	BAŞYURT-KARAKOÇAN (ELAZIĞ)
9	3	2010	02:01 0.4	38.87	23.64	25	4.3	YUNANİSTAN
9	3	2010	06:14 57	38.74	40.14	5	4.2	BAŞYURT-KARAKOÇAN (ELAZIĞ)
9	3	2010	07:21 23.7	38.88	40.26	5	4.2	BAŞYURT-KARAKOÇAN (ELAZIĞ)
9	3	2010	15:35 2.8	39.89	39.14	5	4.2	ÇATALARMUT- (ERZİNCAN)
12	3	2010	01:53 59.2	36.43	23.49	68	4.2	YUNANİSTAN
12	3	2010	11:42 51.4	35.58	27.21	31	4.2	ONİKİ ADALAR- AKDENİZ
23	3	2010	19:33 14.2	39.97	38.64	5	4.2	AKARSU-REFAHİYE (ERZİNCAN)
26	3	2010	19:25 35.8	38.15	26.31	1	4.2	ÇEŞME AÇIKLARI-İZMİR (EGE DENİZİ)
8	3	2010	03:20 24	38.82	40.16	3	4.1	BAŞYURT-KARAKOÇAN (ELAZIĞ)
8	3	2010	14:17 34.9	38.74	40.15	2	4.1	BAŞYURT-KARAKOÇAN (ELAZIĞ)
9	3	2010	07:34 35.5	38.75	40.15	5	4.1	BAŞYURT-KARAKOÇAN (ELAZIĞ)
19	3	2010	21:13 56.2	38.90	39.00	5	4.1	AKÇAPINAR-ÇEMİŞGEZEK (TUNCELİ)
8	3	2010	11:16 52.5	37.54	35.56	5	4.0	ALADAG (ADANA)
9	3	2010	00:09 18.8	38.75	40.09	5	4.0	BAŞYURT-KARAKOÇAN (ELAZIĞ)
9	3	2010	18:14 34.7	39.91	39.14	6	4.0	ÇATALARMUT- (ERZİNCAN)
13	3	2010	10:27 43.6	35.79	30.97	12	4.0	AKDENİZ
20	3	2010	20:24 49	39.54	23.44	12	4.0	EGE DENİZİ

TÜRKİYE VE YAKIN ÇEVRESİNDE M ≥ 4.0 OLAN DEPREMLER (MART 2010)



Ayrıca, Tekirdağ açıkları-Marmara Denizi'nde, Çınarcık-Yalova, Çeşme açıkları-Ege Denizi, Aliğa-Bergama-İzmir, Soma-Kırkağaç-Manisa, Oniki Adalar bölgesinde, Gökova Körfezi-Milas-Muğla, Akdeniz, Simav-Kütahya, Sakarya, Denizli, Bolvadin-Afyon, Afşar-Bala-Ankara, İskenderun-Hatay, Osmaniye, Harran-Şanlıurfa, Kozan-Adana'da meydana gelen deprem etkinlikleri dikkat çekmektedir. Eleşkirt-Ağrı, Çatalarmut-Erzincan, , Karlıova-Bingöl, Doğu Anadolu Fay Zonu boyunca ise Karakoçan-Palu-Sivrice-Elazığ ve Malatya'da deprem etkinlikleri gözlenmiştir.

100 adet geniş bantlı (Broad Band) istasyonun Mart ayı içerisindeki çalışma performansları % 85 dir.

Bu ay içerisinde 12 adet geniş bantlı (Broad Band) deprem istasyonu verimsiz olmuştur.

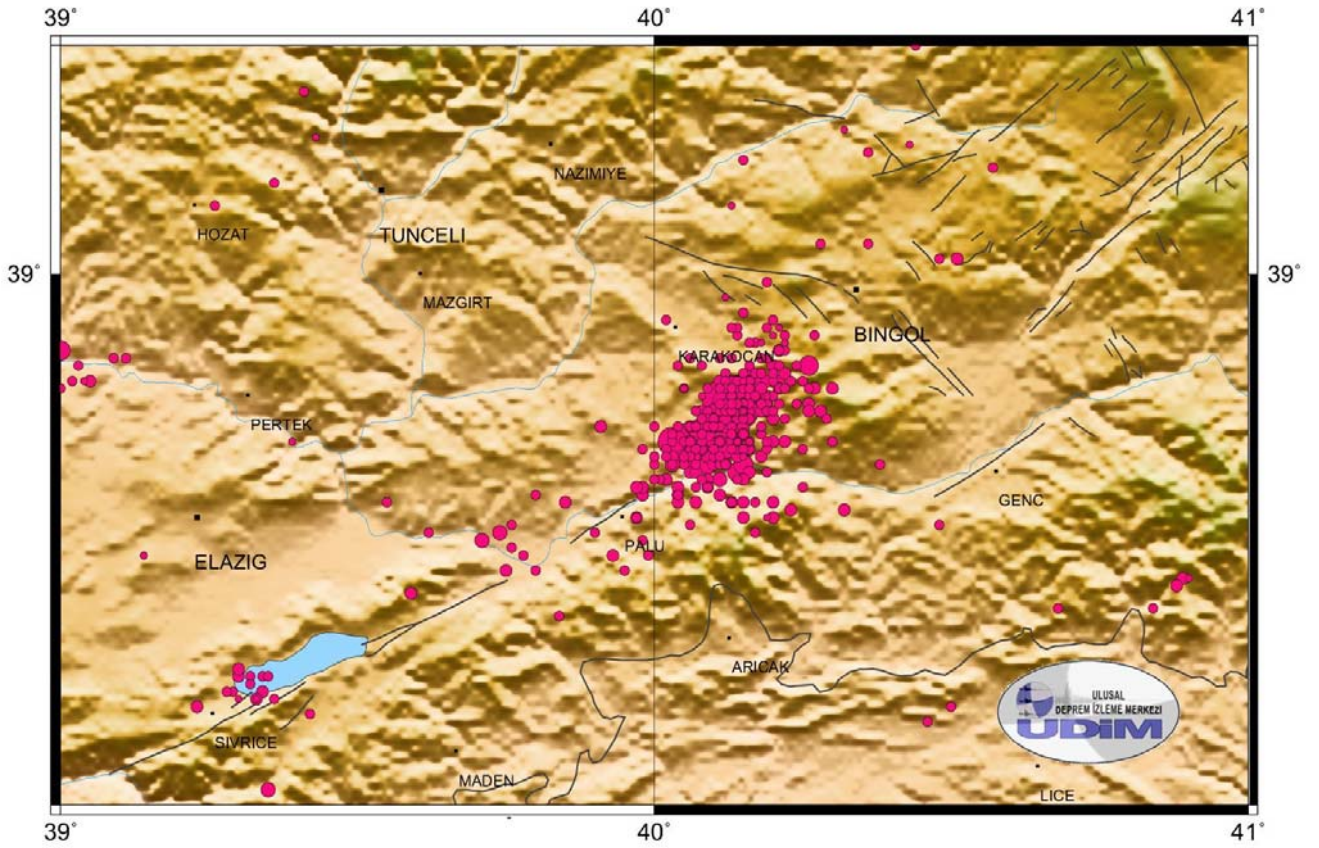
22 adet kısa periyotlu (SP) istasyonun Mart ayı içerisindeki çalışma performansları % 79 olup,

Kaman (KAMT) ve Tokat (TOKT) kısa periyot deprem istasyonları verimsiz olmuştur.

Mart ayı itibarıyla deprem istasyonlarının ve *sismik ağın ortalama verimlilik performansı % 84* olmuştur.

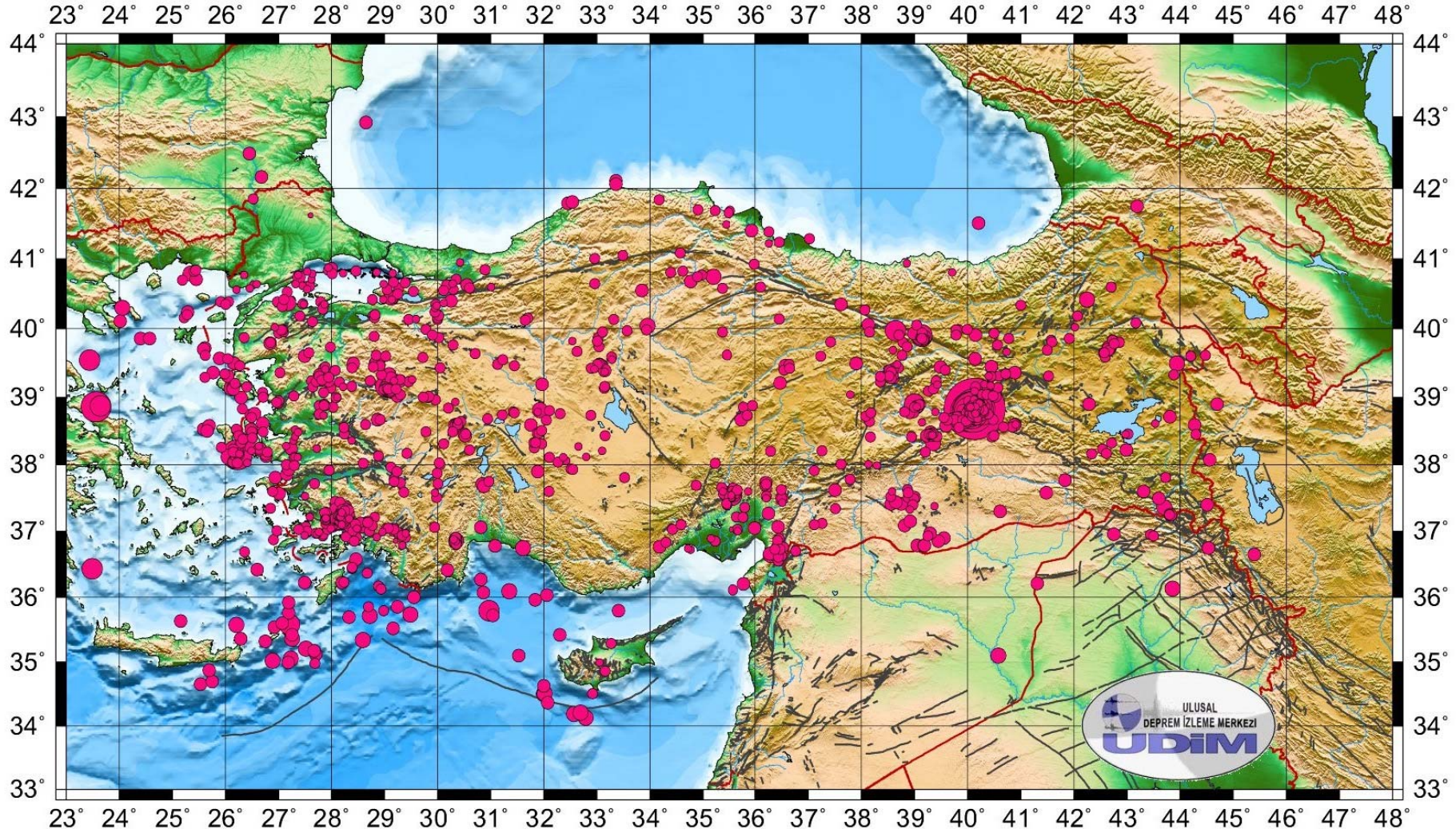


8 Mart 2010 M=6.0 Başyurt – Karakoçan - ELAZIĞ Depremi ve $M \geq 4.0$ olan artçı depremler.



8 Mart 2010 M=6.0 Başyurt – Karakoçan - ELAZIĞ Depreminin artçı dağılımı.

TÜRKİYE VE YAKIN ÇEVRESİ DEPREM ETKİNLİĞİ (MART 2010) **Toplam: 1330 Adet**



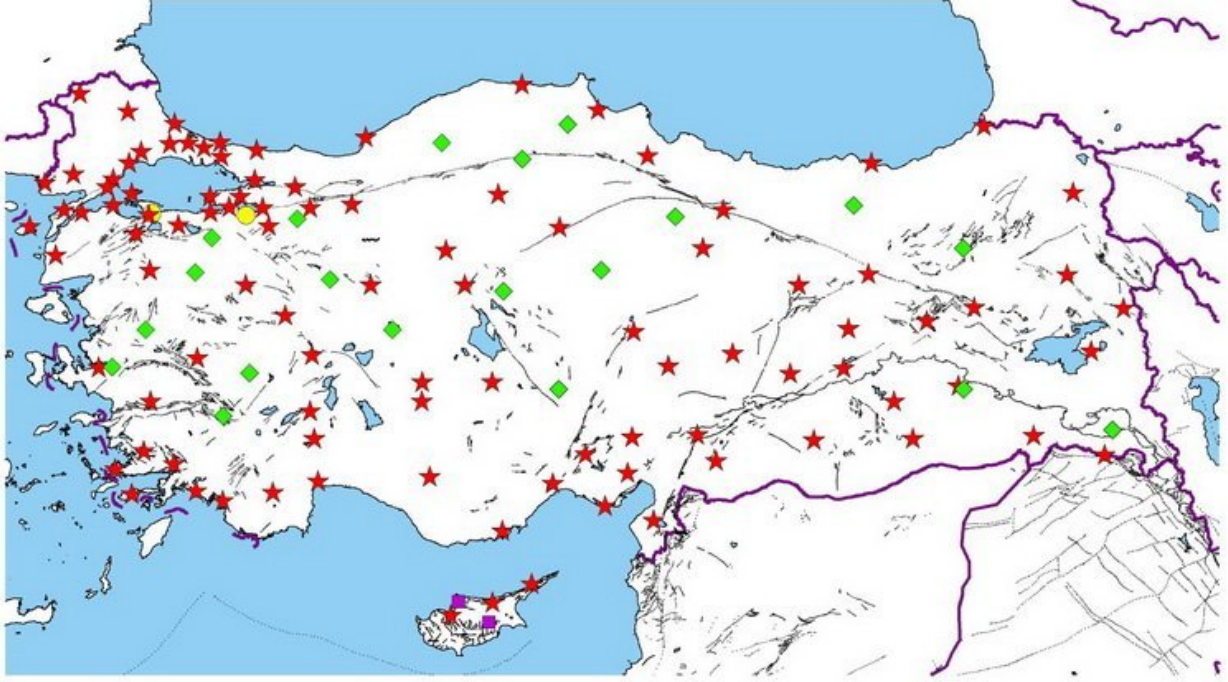
MART 2010

İSTASYON VERİMLİLİK

TABLoları

B.Ü.
KANDILLİ RASATHANESİ VE DEPREM ARAŞTIRMA ENSTİTÜSÜ
ULUSAL DEPREM İZLEME MERKEZİ
DEPREM İSTASYONLARI

Mart 2010
Toplam: 124 Adet



★ GENİŞ BAND

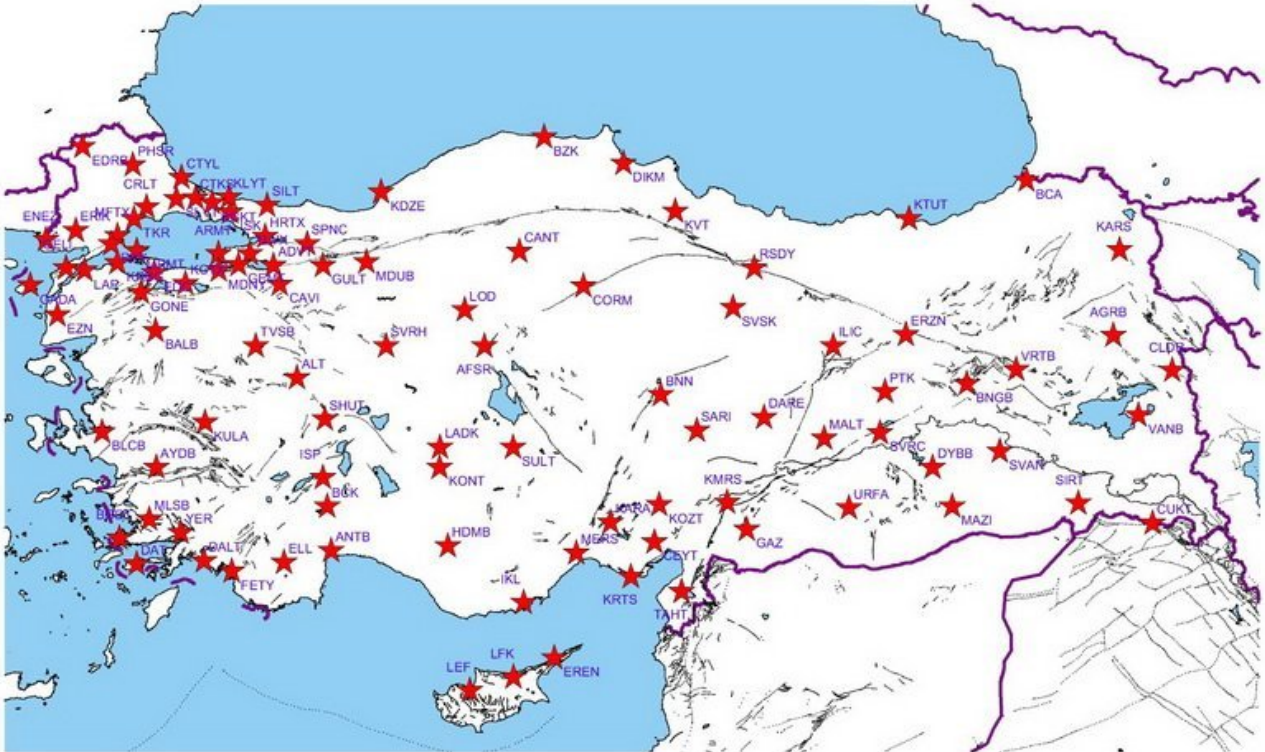
◆ KISA PERİYOT

● TELEMETRİ KISA PERİYOT

■ İVME ÖLÇER

GENİŞ BANTLI (BROADBAND) DEPREM İSTASYONLARI

Mart 2010
100 Adet



Adet	Yöntem	Kod	(+) adet	(-) adet	TOPLAM GÜN	(+)%	(-)%	(+)%	(-)%
1	1	ADVT	31	0	31	100	0		
2	2	AFSR	31	0	31	100	0		
3	3	AGRB	31	0	31	100	0		
4	4	ALT	31	0	31	100	0		
5	5	ANTB	31	0	31	100	0		
6	6	ARMT	31	0	31	100	0		
7	7	AYDB	26	5	31	84	16		
8	8	BALB	31	0	31	100	0		
9	9	BCA	19	12	31	61	39		
10	10	BCK	31	0	31	100	0		
11	11	BGKT	31	0	31	100	0		
12	12	BLCB	30	1	31	97	3		
13	13	BNGB	31	0	31	100	0		
14	14	BNN	31	0	31	100	0		
15	15	BODT	31	0	31	100	0		
16	16	BZK	31	0	31	100	0		
17	17	CANT	31	0	31	100	0		
18	18	CAVI	31	0	31	100	0		
19	19	CEYT	31	0	31	100	0		
20	20	CLDR	31	0	31	100	0		
21	21	CORM	31	0	31	100	0		
22	22	CRLT	31	0	31	100	0		
23	23	CTKS	31	0	31	100	0		
24	24	CTYL	31	0	31	100	0		
25	25	CUKT	30	1	31	97	3		
26	26	DALY	31	0	31	100	0		
27	27	DARE	31	0	31	100	0		
28	28	DAT	0	31	31	0	100		
29	29	DIKM	31	0	31	100	0		
30	30	DYBB	31	0	31	100	0		
31	31	EDC	31	0	31	100	0		
32	32	EDRB	31	0	31	100	0		
33	33	ELL	30	1	31	97	3		
34	34	ENEZ	31	0	31	100	0		
35	35	EREN	31	0	31	100	0		
36	36	ERIK	19	12	31	61	39		
37	37	ERZN	31	0	31	100	0		
38	38	EZNY	31	0	31	100	0		
39	39	FETY	28	3	31	90	10		
40	40	GADA	0	31	31	0	100		
41	41	GAZ	0	31	31	0	100		
42	42	GELI	31	0	31	100	0		
43	43	GEMT	30	1	31	97	3		
44	44	GONE	0	31	31	0	100		
45	45	GULT	25	6	31	81	19		
46	46	HDMB	0	31	31	0	100		
47	47	HRTX	31	0	31	100	0		
48	48	IKL	0	31	31	0	100		
49	49	ILIC	31	0	31	100	0		
50	50	ISK	31	0	31	100	0		
51	51	ISP	31	0	31	100	0		
52	52	KARA	31	0	31	100	0		
53	53	KARS	31	0	31	100	0		
54	54	KCTX	31	0	31	100	0		
55	55	KDZE	31	0	31	100	0		
56	56	KLYT	31	0	31	100	0		
57	57	KMRS	31	0	31	100	0		
58	58	KONT	31	0	31	100	0		
59	59	KOZT	31	0	31	100	0		
60	60	KRBG	31	0	31	100	0		
61	61	KRTS	0	31	31	0	100		
62	62	KTUT	31	0	31	100	0		
63	63	KULA	31	0	31	100	0		
64	64	KVT	31	0	31	100	0		
65	65	LADK	31	0	31	100	0		
66	66	LAP	28	3	31	90	10		
67	67	LEF	31	0	31	100	0		
68	68	LFK	28	3	31	90	10		
69	69	LOD	31	0	31	100	0		
70	70	MALT	31	0	31	100	0		
71	71	MAZI	31	0	31	100	0		
72	72	MDNY	31	0	31	100	0		
73	73	MDUB	31	0	31	100	0		
74	74	MERS	31	0	31	100	0		
75	75	MFTX	0	31	31	0	100		
76	76	MLSB	0	31	31	0	100		
77	77	MRMT	29	2	31	94	6		
78	78	PHRS	31	0	31	100	0		
79	79	PTK	16	15	31	52	48		
80	80	RKY	31	0	31	100	0		
81	81	RSDY	31	0	31	100	0		
82	82	SARI	0	31	31	0	100		
83	83	SHUT	31	0	31	100	0		
84	84	SILT	31	0	31	100	0		
85	85	SIRT	31	0	31	100	0		
86	86	SLVT	31	0	31	100	0		
87	87	SPNC	31	0	31	100	0		
88	88	SULT	31	0	31	100	0		
89	89	SVAN	31	0	31	100	0		
90	90	SVRC	20	11	31	65	35		
91	91	SVRH	31	0	31	100	0		
92	92	SVSK	31	0	31	100	0		
93	93	TAHT	0	31	31	0	100		
94	94	TKR	30	1	31	97	3		
95	95	TVSB	30	1	31	97	3		
96	96	URFA	31	0	31	100	0		
97	97	VANB	31	0	31	100	0		
98	98	VRTB	31	0	31	100	0		
99	99	YER	31	0	31	100	0		
100	100	YLVX	0	31	31	0	100		

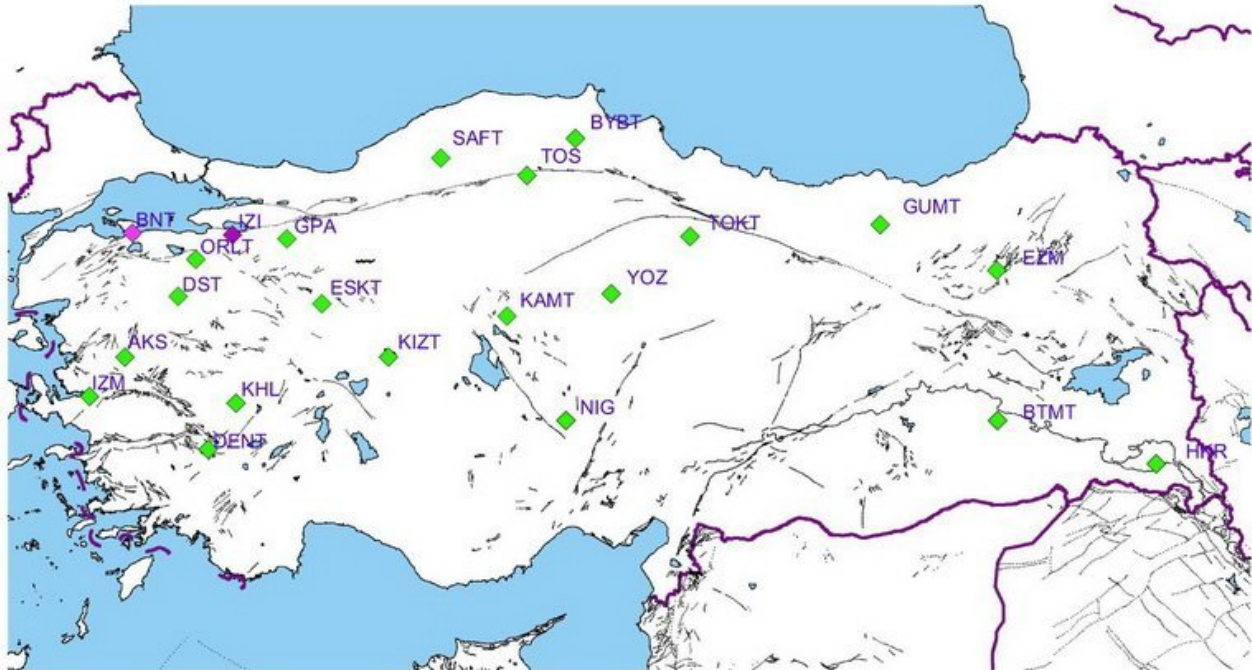
GENİŞ BANTLI (BROAD-BAND) İSTASYONLAR

85

15

101	1	KISA PERİYOT (SHORT PERIOD) İSTASYONLAR	AKS	31	0	31	100	0	79	21
102	2		BNT	31	0	31	100	0		
103	3		BTMT	31	0	31	100	0		
104	4		BYBT	31	0	31	100	0		
105	5		DENT	13	18	31	42	58		
106	6		DST	14	17	31	45	55		
107	7		ESKT	15	16	31	48	52		
108	8		EZM	31	0	31	100	0		
109	9		GPA	31	0	31	100	0		
110	10		GUMT	31	0	31	100	0		
111	11		HKR	17	14	31	55	45		
112	12		IZI	31	0	31	100	0		
113	13		IZM	14	17	31	45	55		
114	14		KAMT	1	30	31	3	97		
115	15		KHL	31	0	31	100	0		
116	16		KIZT	28	3	31	90	10		
117	17		NIG	31	0	31	100	0		
118	18		ORLT	31	0	31	100	0		
119	19		SAFT	31	0	31	100	0		
120	20		TOKT	0	31	31	0	100		
121	21		TOS	31	0	31	100	0		
122	22		YOZ	31	0	31	100	0		
							+	(-)		
2010 MART ORTALAMA %							84	16		

KISA PERİYOT (SP) İSTASYONLAR Toplam: 22 Adet Mart 2010

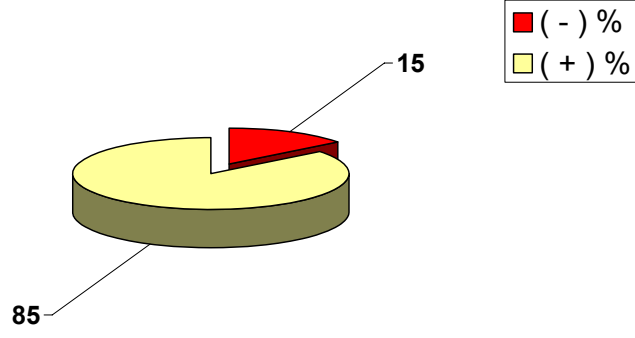


◆ Kısa Periyot
TELEFON HATTI
20 Adet

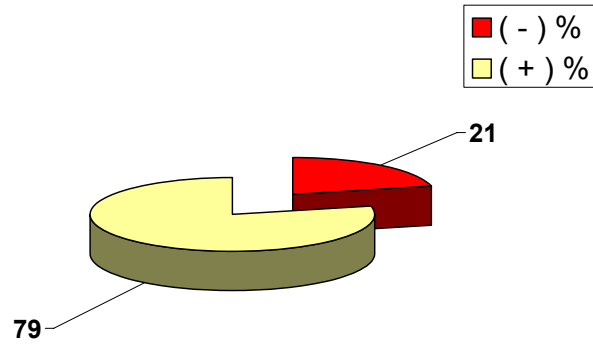
◆ Kısa Periyot
TELEMETRİ
1 Adet

◆ Kısa Periyot
UYDU İLETİŞİMLİ
1 Adet

2010 MART AYI BROAD-BAND İSTASYONLARI VERİMLİLİK GRAFİĞİ



2010 MART AYI SHORT PERIOD İSTASYONLARI VERİMLİLİK GRAFİĞİ



TÜRKİYE DEPREM ETKİNLİĞİ (2010 YILI MART AYI)

No	Tarih - Date			Zaman - Time			Koordinat - Coordinate			Derinlik - Depth		Magnitüd - Magnitude										
	Gün	Ay	Yıl	Saat	Dak.	San.	Enlem-K	Boylam-D	Ref	Km.	Ref	Ms	Ref	Mb	Ref	Md	Ref	MI	Ref	Mw	Ref	
1	1	3	2010	4	32	40.5	38.52	26.48	R	8	R					3.0	R					
2	1	3	2010	5	31	32.2	39.45	40.45	R	9	R					3.0	R					
3	1	3	2010	6	1	7.3	39.72	25.61	R	8	R					3.4	R					
4	1	3	2010	9	13	25.0	38.76	32.31	R	5	R					2.7	R					
5	1	3	2010	10	12	0.0	37.26	28.17	R	5	R					2.8	R					
6	1	3	2010	10	13	2.3	39.84	42.73	R	10	R					2.7	R					
7	1	3	2010	11	0	4.3	41.39	36.26	R	8	R					2.6	R					
8	1	3	2010	11	13	39.2	36.69	26.36	R	7	R					2.9	R					
9	1	3	2010	11	27	41.2	39.31	40.59	R	6	R					2.8	R					
10	1	3	2010	11	31	57.8	39.74	33.04	R	10	R					2.8	R					
11	1	3	2010	13	28	26.5	37.26	28.22	R	11	R					2.7	R					
12	1	3	2010	14	54	20.3	37.92	27.96	R	8	R					2.7	R					
13	1	3	2010	14	56	18.2	37.66	35.35	R	14	R					2.6	R					
14	1	3	2010	15	6	53.3	36.09	31.35	R	10	R							3.7	R			
15	1	3	2010	15	25	41.6	40.19	28.79	R	7	R					2.6	R					
16	1	3	2010	15	26	14.6	36.90	39.55	R	6	R					3.3	R					
17	1	3	2010	15	51	39.6	37.39	28.27	R	10	R					2.7	R					
18	1	3	2010	16	0	26.4	38.96	29.96	R	10	R					2.8	R					
19	1	3	2010	19	48	39.4	37.90	31.89	R	13	R					3.1	R					
20	2	3	2010	0	36	10.9	39.11	29.08	R	2	R					3.3	R					

TÜRKİYE DEPREM ETKİNLİĞİ (2010 YILI MART AYI)

No	Tarih - Date			Zaman - Time			Koordinat - Coordinate			Derinlik - Depth		Magnitüd - Magnitude									
	Gün	Ay	Yıl	Saat	Dak.	San.	Enlem-K	Boylam-D	Ref	Km.	Ref	Ms	Ref	Mb	Ref	Md	Ref	MI	Ref	Mw	Ref
21	2	3	2010	0	43	13.8	39.16	29.02	R	8	R			4.3	N			4.4	R		
22	2	3	2010	0	44	58.7	39.99	39.82	R	14	R					2.7	R				
23	2	3	2010	0	47	1.1	39.10	29.06	R	5	R					3.1	R	3.1	R		
24	2	3	2010	0	59	43.1	39.14	29.10	R	7	R							4.3	R		
25	2	3	2010	1	16	25.6	39.14	29.06	R	5	R					2.9	R				
26	2	3	2010	1	21	36.5	39.10	29.12	R	5	R					3.3	R				
27	2	3	2010	1	26	57.5	39.09	29.17	R	5	R					3.1	R				
28	2	3	2010	1	37	41.8	39.12	29.11	R	5	R					3.3	R				
29	2	3	2010	1	38	53.8	39.60	37.23	R	3	R					2.7	R				
30	2	3	2010	1	48	31.1	39.09	29.18	R	5	R					3.1	R				
31	2	3	2010	1	59	21.8	37.27	36.25	R	5	R					3.2	R				
32	2	3	2010	2	33	47.7	37.57	27.01	R	6	R					3.4	R				
33	2	3	2010	2	47	29.5	40.40	30.25	R	11	R					3.0	R				
34	2	3	2010	2	56	48.8	39.12	29.13	R	5	R					3.0	R				
35	2	3	2010	3	47	30.8	36.13	43.86	R	11	R							3.5	R		
36	2	3	2010	5	8	43.1	39.02	29.24	R	5	R					3.0	R				
37	2	3	2010	5	40	37.2	40.30	24.06	R	5	R					3.6	R				
38	2	3	2010	6	12	14.8	39.49	37.90	R	26	R					3.1	R				
39	2	3	2010	9	17	14.0	39.15	29.00	R	5	R					2.7	R				
40	2	3	2010	9	51	56.4	39.61	44.48	R	5	R							2.6	R		

TÜRKİYE DEPREM ETKİNLİĞİ (2010 YILI MART AYI)

No	Tarih - Date			Zaman - Time			Koordinat - Coordinate			Derinlik - Depth		Magnitüd - Magnitude									
	Gün	Ay	Yıl	Saat	Dak.	San.	Enlem-K	Boylam-D	Ref	Km.	Ref	Ms	Ref	Mb	Ref	Md	Ref	MI	Ref	Mw	Ref
41	2	3	2010	10	11	36.8	40.13	30.00	R	13	R					2.9	R				
42	2	3	2010	10	21	20.3	37.36	35.80	R	19	R					2.5	R				
43	2	3	2010	10	21	52.9	39.12	28.99	R	5	R					2.7	R				
44	2	3	2010	10	46	58.4	39.11	29.11	R	5	R					2.7	R				
45	2	3	2010	11	48	4.1	39.09	29.04	R	3	R					2.9	R				
46	2	3	2010	12	16	30.0	41.09	34.57	R	6	R					2.9	R				
47	2	3	2010	12	19	35.1	39.11	28.99	R	5	R					2.7	R				
48	2	3	2010	12	41	11.8	40.13	29.45	R	5	R					2.6	R				
49	2	3	2010	13	1	31.0	40.35	29.97	R	21	R					2.5	R				
50	2	3	2010	13	37	47.6	40.14	29.59	R	14	R					2.4	R				
51	2	3	2010	14	20	15.2	39.27	38.61	R	18	R					2.9	R				
52	2	3	2010	14	43	0.3	41.68	35.52	R	6	R					2.9	R				
53	2	3	2010	15	43	24.6	40.63	30.55	R	12	R					3.1	R				
54	2	3	2010	18	28	16.1	39.10	29.09	R	5	R					3.3	R				
55	2	3	2010	19	45	27.1	34.19	32.57	R	10	R							3.6	R		
56	2	3	2010	19	51	34.8	37.81	26.94	R	20	R					3.2	R				
57	2	3	2010	22	3	49.4	39.86	41.91	R	9	R					2.8	R				
58	2	3	2010	22	46	31.5	38.41	38.94	R	6	R					2.9	R				
59	2	3	2010	22	51	34.2	40.79	25.34	R	4	R					3.5	R				
60	3	3	2010	0	8	18.4	40.55	33.85	R	12	R					3.1	R				

TÜRKİYE DEPREM ETKİNLİĞİ (2010 YILI MART AYI)

No	Tarih - Date			Zaman - Time			Koordinat - Coordinate			Derinlik - Depth		Magnitüd - Magnitude									
	Gün	Ay	Yıl	Saat	Dak.	San.	Enlem-K	Boylam-D	Ref	Km.	Ref	Ms	Ref	Mb	Ref	Md	Ref	MI	Ref	Mw	Ref
61	3	3	2010	1	19	5.0	37.65	36.22	R	16	R					2.7	R				
62	3	3	2010	3	42	20.0	39.50	28.83	R	5	R					3.2	R				
63	3	3	2010	3	49	18.7	36.95	43.44	R	11	R					2.8	R				
64	3	3	2010	4	16	41.3	39.52	28.88	R	4	R					3.3	R				
65	3	3	2010	4	52	8.3	38.99	26.30	R	8	R					3.1	R				
66	3	3	2010	7	52	36.6	38.00	30.05	R	8	R					2.8	R				
67	3	3	2010	10	19	57.2	37.57	35.41	R	11	R					2.5	R				
68	3	3	2010	10	34	48.3	40.39	26.98	R	4	R					2.9	R				
69	3	3	2010	10	55	14.6	35.85	28.70	R	40	R					2.9	R				
70	3	3	2010	11	30	47.1	35.42	32.30	R	30	R					3.4	R	3.3	R		
71	3	3	2010	12	28	52.3	37.73	36.20	R	16	R					3.1	R				
72	3	3	2010	13	13	38.8	40.74	27.39	R	7	R					3.1	R				
73	3	3	2010	14	3	36.3	37.25	28.20	R	5	R					2.7	R				
74	3	3	2010	14	40	37.2	40.42	28.77	R	5	R					2.8	R				
75	3	3	2010	15	47	33.7	37.31	28.24	R	19	R					2.7	R				
76	3	3	2010	16	37	34.0	39.21	36.47	R	6	R					3.2	R				
77	3	3	2010	19	29	11.6	39.33	28.94	R	5	R					2.9	R				
78	3	3	2010	20	33	16.3	34.13	32.79	R	38	R							3.7	R		
79	3	3	2010	21	1	12.7	39.86	40.77	R	13	R					2.8	R				
80	3	3	2010	22	42	57.2	39.51	28.88	R	5	R					3.2	R				

TÜRKİYE DEPREM ETKİNLİĞİ (2010 YILI MART AYI)

No	Tarih - Date			Zaman - Time			Koordinat - Coordinate			Derinlik - Depth		Magnitüd - Magnitude									
	Gün	Ay	Yıl	Saat	Dak.	San.	Enlem-K	Boylam-D	Ref	Km.	Ref	Ms	Ref	Mb	Ref	Md	Ref	MI	Ref	Mw	Ref
81	3	3	2010	23	6	27.0	38.24	27.24	R	7	R					3.2	R				
82	4	3	2010	0	47	13.4	39.31	26.04	R	9	R					3.2	R				
83	4	3	2010	1	10	30.2	40.15	31.70	R	11	R					2.7	R				
84	4	3	2010	2	42	39.7	39.52	28.84	R	5	R							3.4	R		
85	4	3	2010	3	25	10.8	39.46	28.92	R	6	R					2.8	R				
86	4	3	2010	6	50	36.6	39.80	26.85	R	7	R					2.8	R				
87	4	3	2010	6	59	36.2	38.99	29.82	R	8	R					2.9	R				
88	4	3	2010	7	38	3.6	36.11	35.57	R	17	R					2.9	R				
89	4	3	2010	9	44	54.6	37.29	28.19	R	5	R					2.6	R				
90	4	3	2010	9	53	45.1	36.85	39.45	R	5	R					3.0	R				
91	4	3	2010	12	16	47.3	41.29	37.02	R	6	R					2.7	R				
92	4	3	2010	12	51	15.2	40.58	35.37	R	5	R					2.7	R				
93	4	3	2010	13	12	58.2	40.32	27.07	R	12	R					2.5	R				
94	4	3	2010	14	44	58.4	38.21	37.26	R	9	R					2.7	R				
95	4	3	2010	16	12	49.3	37.69	36.18	R	8	R					2.7	R				
96	4	3	2010	19	8	9.7	39.52	28.84	R	9	R					3.2	R				
97	4	3	2010	20	17	38.6	38.47	31.88	R	6	R					2.6	R				
98	4	3	2010	20	57	50.4	34.21	32.69	R	11	R							3.6	R		
99	4	3	2010	21	10	44.7	39.13	33.14	R	17	R					2.9	R				
100	4	3	2010	21	24	47.3	39.07	26.70	R	14	R					2.7	R				

TÜRKİYE DEPREM ETKİNLİĞİ (2010 YILI MART AYI)

No	Tarih - Date			Zaman - Time			Koordinat - Coordinate			Derinlik - Depth		Magnitüd - Magnitude										
	Gün	Ay	Yıl	Saat	Dak.	San.	Enlem-K	Boylam-D	Ref	Km.	Ref	Ms	Ref	Mb	Ref	Md	Ref	MI	Ref	Mw	Ref	
101	5	3	2010	1	50	0.7	40.65	32.96	R	10	R					2.8	R					
102	5	3	2010	2	31	2.1	39.44	28.79	R	7	R					2.8	R					
103	5	3	2010	5	13	44.8	37.71	36.21	R	3	R					2.7	R					
104	5	3	2010	5	55	3.2	40.59	30.60	R	14	R					2.7	R					
105	5	3	2010	13	14	26.0	39.12	29.09	R	10	R					2.7	R					
106	5	3	2010	15	7	43.5	40.30	27.84	R	6	R					2.7	R					
107	5	3	2010	17	11	5.6	40.58	29.27	R	2	R					2.8	R					
108	5	3	2010	17	31	53.2	40.86	28.00	R	2	R					3.3	R					
109	5	3	2010	19	27	35.9	36.77	36.43	R	9	R					3.0	R					
110	5	3	2010	20	37	52.1	38.32	39.35	R	12	R							3.8	R			
111	6	3	2010	3	32	31.2	38.53	25.59	R	6	R							3.1	R			
112	6	3	2010	5	42	18.5	38.45	30.50	R	5	R					3.0	R					
113	6	3	2010	9	49	54.3	37.20	28.14	R	2	R					2.7	R					
114	6	3	2010	10	20	17.4	39.13	29.05	R	6	R					2.8	R					
115	6	3	2010	13	7	3.6	37.31	28.22	R	8	R					2.7	R					
116	6	3	2010	13	17	24.2	39.31	38.60	R	15	R					2.7	R					
117	6	3	2010	17	19	43.2	39.56	26.04	R	8	R					2.7	R					
118	6	3	2010	18	26	31.1	38.91	26.99	R	13	R					2.9	R					
119	6	3	2010	22	23	16.5	36.75	36.49	R	18	R					2.7	R					
120	6	3	2010	22	36	26.5	36.71	36.43	R	8	R					2.7	R					

TÜRKİYE DEPREM ETKİNLİĞİ (2010 YILI MART AYI)

No	Tarih - Date			Zaman - Time			Koordinat - Coordinate			Derinlik - Depth		Magnitüd - Magnitude									
	Gün	Ay	Yıl	Saat	Dak.	San.	Enlem-K	Boylam-D	Ref	Km.	Ref	Ms	Ref	Mb	Ref	Md	Ref	MI	Ref	Mw	Ref
121	6	3	2010	23	28	58.8	39.49	28.41	R	3	R					3.4	R				
122	7	3	2010	0	33	29.0	36.89	36.45	R	4	R					2.7	R				
123	7	3	2010	0	44	59.6	36.55	36.44	R	5	R					2.9	R				
124	7	3	2010	1	57	42.1	38.43	30.52	R	4	R					3.0	R				
125	7	3	2010	2	13	7.3	36.63	36.40	R	5	R					3.0	R				
126	7	3	2010	2	24	6.0	39.43	28.39	R	5	R					2.8	R				
127	7	3	2010	2	38	49.2	38.46	30.53	R	6	R					2.7	R				
128	7	3	2010	3	13	47.5	40.82	25.41	R	8	R					2.8	R				
129	7	3	2010	3	38	36.1	40.84	25.44	R	5	R					2.9	R				
130	7	3	2010	6	29	53.3	40.05	39.04	R	13	R					2.8	R				
131	7	3	2010	6	39	24.8	39.07	29.10	R	13	R					2.6	R				
132	7	3	2010	7	19	10.0	39.13	27.99	R	11	R					2.8	R				
133	7	3	2010	9	41	25.4	39.32	27.82	R	6	R					3.4	R				
134	7	3	2010	9	48	14.4	37.29	28.15	R	9	R					2.7	R				
135	7	3	2010	9	51	34.8	37.28	28.22	R	16	R					2.7	R				
136	7	3	2010	10	1	57.8	40.20	30.01	R	7	R					2.8	R				
137	7	3	2010	12	25	38.2	37.24	28.17	R	8	R					2.6	R				
138	7	3	2010	12	31	58.5	39.28	38.52	R	19	R					2.6	R				
139	7	3	2010	13	16	2.6	37.28	28.23	R	8	R					2.7	R				
140	7	3	2010	13	17	11.0	40.71	30.35	R	9	R					2.7	R				

TÜRKİYE DEPREM ETKİNLİĞİ (2010 YILI MART AYI)

No	Tarih - Date			Zaman - Time			Koordinat - Coordinate			Derinlik - Depth		Magnitüd - Magnitude									
	Gün	Ay	Yıl	Saat	Dak.	San.	Enlem-K	Boylam-D	Ref	Km.	Ref	Ms	Ref	Mb	Ref	Md	Ref	MI	Ref	Mw	Ref
141	7	3	2010	14	52	47.0	39.40	38.50	R	21	R					2.8	R				
142	7	3	2010	15	17	32.6	39.43	30.05	R	6	R					2.8	R				
143	7	3	2010	15	25	20.0	37.28	28.24	R	10	R					2.6	R				
144	7	3	2010	17	14	2.0	37.53	35.56	R	8	R					2.9	R				
145	7	3	2010	17	47	54.4	37.00	29.16	R	10	R					2.7	R				
146	7	3	2010	17	49	42.4	37.05	29.18	R	6	R					2.6	R				
147	7	3	2010	17	59	25.0	39.49	33.04	R	6	R					2.7	R				
148	7	3	2010	18	59	34.8	39.48	33.01	R	8	R					2.7	R				
149	7	3	2010	20	16	51.4	38.95	27.00	R	14	R					2.8	R				
150	7	3	2010	20	33	17.8	37.01	28.46	R	9	R					2.8	R				
151	7	3	2010	20	43	46.5	37.03	28.47	R	10	R					2.7	R				
152	7	3	2010	23	28	55.9	36.64	36.29	R	8	R							3.9	R		
153	8	3	2010	0	43	52.9	36.63	36.50	R	12	R					2.8	R				
154	8	3	2010	1	44	26.0	36.76	36.53	R	14	R					2.5	R				
155	8	3	2010	2	32	31.1	38.83	40.13	R	2	R							6.0	R	6.1	N
156	8	3	2010	2	40	26.2	38.89	40.18	R	9	R					2.6	R				
157	8	3	2010	2	41	47.9	38.82	40.09	R	5	R					2.5	R				
158	8	3	2010	2	42	40.4	38.86	40.15	R	5	R					2.8	R				
159	8	3	2010	2	44	28.2	38.79	40.18	R	3	R					2.7	R				
160	8	3	2010	2	50	25.1	38.76	40.03	R	6	R					3.0	R				

TÜRKİYE DEPREM ETKİNLİĞİ (2010 YILI MART AYI)

No	Tarih - Date			Zaman - Time			Koordinat - Coordinate			Derinlik - Depth		Magnitüd - Magnitude									
	Gün	Ay	Yıl	Saat	Dak.	San.	Enlem-K	Boylam-D	Ref	Km.	Ref	Ms	Ref	Mb	Ref	Md	Ref	MI	Ref	Mw	Ref
161	8	3	2010	2	56	43.3	38.77	40.06	R	2	R					2.7	R				
162	8	3	2010	3	4	55.5	38.81	40.14	R	3	R					3.1	R				
163	8	3	2010	3	10	32.4	38.84	40.13	R	10	R					2.8	R				
164	8	3	2010	3	12	54.6	38.87	40.17	R	6	R					2.8	R				
165	8	3	2010	3	14	9.4	38.87	40.15	R	5	R					2.8	R				
166	8	3	2010	3	15	54.5	38.85	40.16	R	9	R					3.0	R				
167	8	3	2010	3	17	13.6	38.86	40.20	R	10	R					2.6	R				
168	8	3	2010	3	20	24.0	38.82	40.16	R	3	R			4.4	N			4.1	R		
169	8	3	2010	3	22	52.5	38.90	40.21	R	3	R							3.3	R		
170	8	3	2010	3	26	51.3	38.87	40.16	R	5	R					3.1	R				
171	8	3	2010	3	32	19.5	38.84	40.16	R	8	R					3.0	R				
172	8	3	2010	3	42	2.1	38.89	40.19	R	8	R					2.7	R				
173	8	3	2010	3	52	22.9	38.80	39.91	R	9	R					3.1	R				
174	8	3	2010	4	1	4.0	38.86	40.20	R	6	R					3.0	R				
175	8	3	2010	4	14	56.0	38.80	40.08	R	5	R							3.4	R		
176	8	3	2010	4	24	45.7	38.83	40.19	R	5	R					3.0	R				
177	8	3	2010	4	30	19.8	38.86	40.21	R	9	R					3.2	R				
178	8	3	2010	4	32	28.7	38.78	40.22	R	9	R					3.1	R				
179	8	3	2010	4	36	9.5	38.80	40.10	R	5	R					3.2	R				
180	8	3	2010	4	42	36.9	38.68	40.15	R	9	R					3.1	R				

TÜRKİYE DEPREM ETKİNLİĞİ (2010 YILI MART AYI)

No	Tarih - Date			Zaman - Time			Koordinat - Coordinate			Derinlik - Depth		Magnitüd - Magnitude									
	Gün	Ay	Yıl	Saat	Dak.	San.	Enlem-K	Boylam-D	Ref	Km.	Ref	Ms	Ref	Mb	Ref	Md	Ref	MI	Ref	Mw	Ref
181	8	3	2010	4	43	58.2	38.82	40.13	R	5	R					3.3	R				
182	8	3	2010	4	46	8.6	38.99	40.19	R	7	R					2.7	R				
183	8	3	2010	5	0	36.3	38.95	40.15	R	5	R					2.7	R				
184	8	3	2010	5	12	4.7	38.79	40.08	R	6	R					2.7	R				
185	8	3	2010	5	21	56.1	38.92	40.27	R	9	R					2.6	R				
186	8	3	2010	5	26	19.1	38.85	40.21	R	11	R					2.8	R				
187	8	3	2010	5	42	6.0	38.81	40.12	R	7	R					3.4	R				
188	8	3	2010	5	49	32.1	38.81	40.13	R	6	R					3.3	R				
189	8	3	2010	6	16	27.4	38.80	40.11	R	5	R					3.0	R				
190	8	3	2010	6	18	36.6	38.81	40.14	R	5	R					2.8	R				
191	8	3	2010	6	22	6.8	38.82	40.19	R	5	R					3.0	R				
192	8	3	2010	6	48	40.6	38.83	40.16	R	6	R					2.9	R				
193	8	3	2010	7	6	16.0	38.86	40.13	R	10	R					2.5	R				
194	8	3	2010	7	22	50.9	38.91	40.17	R	5	R					2.5	R				
195	8	3	2010	7	47	38.2	38.78	40.06	R	5	R							5.5	R	5.6	N
196	8	3	2010	8	6	7.2	38.78	40.09	R	2	R							3.8	R		
197	8	3	2010	8	11	20.7	38.76	40.06	R	2	R			4.6	N			4.3	R		
198	8	3	2010	8	16	21.0	38.78	40.07	R	5	R							3.4	R		
199	8	3	2010	8	18	40.5	38.69	40.32	R	17	R					3.0	R				
200	8	3	2010	8	20	41.4	38.78	40.05	R	10	R					2.8	R				

TÜRKİYE DEPREM ETKİNLİĞİ (2010 YILI MART AYI)

No	Tarih - Date			Zaman - Time			Koordinat - Coordinate			Derinlik - Depth		Magnitüd - Magnitude									
	Gün	Ay	Yıl	Saat	Dak.	San.	Enlem-K	Boylam-D	Ref	Km.	Ref	Ms	Ref	Mb	Ref	Md	Ref	MI	Ref	Mw	Ref
201	8	3	2010	8	31	42.3	38.81	40.14	R	6	R					2.9	R				
202	8	3	2010	8	43	22.2	38.67	40.48	R	5	R					2.7	R				
203	8	3	2010	8	52	14.6	38.80	40.09	R	5	R							3.5	R		
204	8	3	2010	8	58	17.0	38.85	40.17	R	5	R					3.1	R				
205	8	3	2010	9	0	45.9	38.76	40.08	R	5	R			4.9	N			4.8	R		
206	8	3	2010	9	11	7.8	38.80	40.04	R	5	R					2.8	R				
207	8	3	2010	9	21	58.7	38.82	40.10	R	2	R							3.5	R		
208	8	3	2010	9	27	30.0	38.82	40.28	R	7	R							3.2	R		
209	8	3	2010	9	30	4.6	38.86	40.18	R	5	R							3.7	R		
210	8	3	2010	9	33	45.0	38.72	40.25	R	8	R					2.8	R				
211	8	3	2010	9	45	25.7	38.77	40.16	R	10	R							3.2	R		
212	8	3	2010	9	47	39.1	38.76	40.14	R	5	R							3.1	R		
213	8	3	2010	9	52	15.7	38.70	40.20	R	9	R							3.3	R		
214	8	3	2010	9	55	16.0	38.68	40.20	R	8	R							3.2	R		
215	8	3	2010	9	57	5.8	38.70	40.15	R	8	R							3.0	R		
216	8	3	2010	10	7	46.4	38.75	40.12	R	5	R					3.0	R				
217	8	3	2010	10	9	10.2	38.88	40.16	R	5	R					2.9	R				
218	8	3	2010	10	14	23.6	38.83	40.13	R	5	R			5.2	N			5.1	R		
219	8	3	2010	10	28	37.6	38.82	40.15	R	8	R					3.1	R				
220	8	3	2010	10	33	43.2	38.79	40.07	R	3	R							3.4	R		

TÜRKİYE DEPREM ETKİNLİĞİ (2010 YILI MART AYI)

No	Tarih - Date			Zaman - Time			Koordinat - Coordinate			Derinlik - Depth		Magnitüd - Magnitude									
	Gün	Ay	Yıl	Saat	Dak.	San.	Enlem-K	Boylam-D	Ref	Km.	Ref	Ms	Ref	Mb	Ref	Md	Ref	MI	Ref	Mw	Ref
221	8	3	2010	10	37	54.7	38.80	40.09	R	5	R					2.8	R				
222	8	3	2010	10	39	55.1	38.87	40.20	R	5	R					2.5	R				
223	8	3	2010	10	41	15.7	38.77	40.14	R	5	R					2.8	R				
224	8	3	2010	10	44	57.1	38.70	39.85	R	16	R							3.0	R		
225	8	3	2010	10	45	27.2	38.83	40.24	R	5	R							2.8	R		
226	8	3	2010	10	48	47.2	39.16	40.36	R	6	R					2.6	R				
227	8	3	2010	10	50	16.5	38.82	40.15	R	5	R					2.4	R				
228	8	3	2010	11	2	36.0	38.77	40.19	R	16	R					2.7	R				
229	8	3	2010	11	4	13.5	38.85	40.21	R	16	R					2.9	R				
230	8	3	2010	11	12	10.5	38.79	40.09	R	5	R			5.0	N			5.3	R		
231	8	3	2010	11	16	52.5	37.54	35.56	R	5	R							4.0	R		
232	8	3	2010	11	27	26.2	39.30	40.44	R	6	R					2.5	R				
233	8	3	2010	11	35	18.8	38.77	40.16	R	10	R					2.8	R				
234	8	3	2010	11	47	4.4	38.77	40.15	R	11	R					2.7	R				
235	8	3	2010	11	48	9.0	36.99	28.43	R	5	R							3.1	R		
236	8	3	2010	11	50	25.3	38.83	40.13	R	5	R					2.8	R				
237	8	3	2010	11	52	27.5	38.82	40.14	R	10	R					2.6	R				
238	8	3	2010	11	54	43.3	38.76	40.10	R	8	R					3.0	R				
239	8	3	2010	11	56	54.4	38.76	40.10	R	6	R					2.7	R				
240	8	3	2010	12	0	32.7	38.83	40.13	R	9	R					2.7	R				

TÜRKİYE DEPREM ETKİNLİĞİ (2010 YILI MART AYI)

No	Tarih - Date			Zaman - Time			Koordinat - Coordinate			Derinlik - Depth		Magnitüd - Magnitude										
	Gün	Ay	Yıl	Saat	Dak.	San.	Enlem-K	Boylam-D	Ref	Km.	Ref	Ms	Ref	Mb	Ref	Md	Ref	MI	Ref	Mw	Ref	
241	8	3	2010	12	3	11.0	38.81	40.09	R	11	R					2.8	R					
242	8	3	2010	12	11	9.4	38.76	40.11	R	6	R					2.7	R					
243	8	3	2010	12	15	38.7	38.79	40.15	R	5	R					2.7	R					
244	8	3	2010	12	29	31.1	38.84	40.08	R	11	R					2.3	R					
245	8	3	2010	12	29	59.2	38.76	40.07	R	8	R					2.7	R					
246	8	3	2010	12	43	12.0	38.93	40.21	R	5	R					2.4	R					
247	8	3	2010	12	46	23.4	38.77	40.08	R	10	R					2.8	R					
248	8	3	2010	12	50	40.9	38.84	40.17	R	4	R							3.5	R			
249	8	3	2010	13	3	43.0	38.78	40.16	R	5	R					2.6	R					
250	8	3	2010	13	6	9.4	38.75	40.03	R	13	R					2.6	R					
251	8	3	2010	13	7	12.4	38.86	40.13	R	9	R					2.7	R					
252	8	3	2010	13	41	49.5	38.88	40.20	R	4	R					3.0	R					
253	8	3	2010	13	52	35.0	38.80	40.08	R	3	R							3.4	R			
254	8	3	2010	14	17	34.9	38.74	40.15	R	2	R							4.1	R			
255	8	3	2010	14	19	39.7	38.83	40.14	R	25	R					2.9	R					
256	8	3	2010	14	32	31.2	38.66	40.17	R	9	R					2.6	R					
257	8	3	2010	14	46	33.1	38.82	40.12	R	8	R					2.7	R					
258	8	3	2010	14	51	21.7	38.81	40.22	R	5	R					2.8	R					
259	8	3	2010	15	2	17.1	38.78	40.11	R	4	R					2.8	R					
260	8	3	2010	15	4	51.4	38.78	40.03	R	5	R			4.6	N			4.7	R			

TÜRKİYE DEPREM ETKİNLİĞİ (2010 YILI MART AYI)

No	Tarih - Date			Zaman - Time			Koordinat - Coordinate			Derinlik - Depth		Magnitüd - Magnitude									
	Gün	Ay	Yıl	Saat	Dak.	San.	Enlem-K	Boylam-D	Ref	Km.	Ref	Ms	Ref	Mb	Ref	Md	Ref	MI	Ref	Mw	Ref
261	8	3	2010	15	17	10.1	38.84	40.17	R	6	R					3.1	R				
262	8	3	2010	15	21	21.0	38.75	40.38	R	18	R					2.7	R				
263	8	3	2010	15	45	27.6	37.22	28.19	R	5	R					2.6	R				
264	8	3	2010	15	51	36.0	36.79	39.05	R	4	R					3.2	R				
265	8	3	2010	15	59	30.5	38.87	40.12	R	5	R					2.8	R				
266	8	3	2010	16	7	11.8	40.45	29.13	R	3	R							3.5	R		
267	8	3	2010	16	9	37.3	38.61	30.37	R	8	R					2.6	R				
268	8	3	2010	16	14	9.5	38.78	40.19	R	8	R					2.8	R				
269	8	3	2010	16	17	56.6	37.91	37.11	R	2	R					2.8	R				
270	8	3	2010	16	21	13.2	38.67	40.06	R	6	R					2.5	R				
271	8	3	2010	16	28	7.2	38.92	40.20	R	5	R					2.4	R				
272	8	3	2010	16	37	30.9	39.41	32.95	R	13	R					2.2	R				
273	8	3	2010	16	44	35.6	39.09	39.26	R	5	R					2.6	R				
274	8	3	2010	16	46	34.5	38.92	40.22	R	5	R					2.7	R				
275	8	3	2010	16	50	20.6	38.85	40.22	R	5	R					2.9	R				
276	8	3	2010	16	58	55.3	38.76	40.09	R	5	R					3.1	R				
277	8	3	2010	17	3	3.4	36.92	28.27	R	16	R					2.7	R				
278	8	3	2010	17	6	47.2	39.31	41.52	R	11	R					2.7	R				
279	8	3	2010	17	13	0.8	38.78	40.14	R	8	R					3.0	R				
280	8	3	2010	17	19	38.6	38.74	40.16	R	5	R					3.2	R				

TÜRKİYE DEPREM ETKİNLİĞİ (2010 YILI MART AYI)

No	Tarih - Date			Zaman - Time			Koordinat - Coordinate			Derinlik - Depth		Magnitüd - Magnitude										
	Gün	Ay	Yıl	Saat	Dak.	San.	Enlem-K	Boylam-D	Ref	Km.	Ref	Ms	Ref	Mb	Ref	Md	Ref	MI	Ref	Mw	Ref	
281	8	3	2010	17	24	25.5	38.97	40.12	R	2	R					2.4	R					
282	8	3	2010	17	27	13.3	38.78	40.06	R	5	R					2.6	R					
283	8	3	2010	17	47	5.5	38.75	40.06	R	5	R					3.2	R					
284	8	3	2010	17	50	23.0	38.84	40.20	R	5	R					2.7	R					
285	8	3	2010	17	51	48.2	38.94	40.20	R	5	R					2.5	R					
286	8	3	2010	18	12	22.3	38.74	40.06	R	7	R					3.2	R					
287	8	3	2010	18	21	5.6	38.87	40.18	R	5	R					2.7	R					
288	8	3	2010	18	22	1.1	38.78	40.11	R	5	R					3.0	R					
289	8	3	2010	18	50	27.3	38.85	40.16	R	5	R					2.8	R					
290	8	3	2010	19	5	9.3	38.79	40.18	R	10	R					2.6	R					
291	8	3	2010	19	19	56.2	38.82	40.16	R	5	R					2.8	R					
292	8	3	2010	19	30	52.4	38.84	40.16	R	2	R					2.6	R					
293	8	3	2010	19	42	28.7	38.88	40.04	R	4	R					2.6	R					
294	8	3	2010	19	46	25.9	38.79	40.08	R	5	R					2.8	R					
295	8	3	2010	19	59	26.8	38.84	40.19	R	4	R					3.1	R					
296	8	3	2010	20	6	26.1	38.77	40.02	R	7	R					2.5	R					
297	8	3	2010	20	9	11.4	38.81	40.10	R	3	R					2.5	R					
298	8	3	2010	20	13	30.0	39.19	40.32	R	5	R					2.3	R					
299	8	3	2010	20	15	14.8	38.80	40.07	R	5	R					2.5	R					
300	8	3	2010	20	18	52.3	38.83	40.26	R	6	R					3.0	R					

TÜRKİYE DEPREM ETKİNLİĞİ (2010 YILI MART AYI)

No	Tarih - Date			Zaman - Time			Koordinat - Coordinate			Derinlik - Depth		Magnitüd - Magnitude										
	Gün	Ay	Yıl	Saat	Dak.	San.	Enlem-K	Boylam-D	Ref	Km.	Ref	Ms	Ref	Mb	Ref	Md	Ref	MI	Ref	Mw	Ref	
301	8	3	2010	20	34	25.4	38.84	40.17	R	5	R					2.8	R					
302	8	3	2010	20	41	29.2	38.80	40.15	R	8	R					3.3	R					
303	8	3	2010	20	48	52.6	38.85	40.22	R	5	R					2.8	R					
304	8	3	2010	21	48	52.5	39.02	40.51	R	5	R					3.4	R	3.0	R			
305	8	3	2010	21	53	27.9	40.10	27.64	R	7	R					2.8	R					
306	8	3	2010	21	59	35.0	38.84	40.19	R	5	R					2.4	R					
307	8	3	2010	22	6	14.3	38.73	40.02	R	5	R							3.3	R			
308	8	3	2010	22	29	10.2	38.81	40.09	R	3	R					3.0	R					
309	8	3	2010	22	34	10.3	38.73	40.14	R	20	R					2.8	R					
310	8	3	2010	23	15	53.6	39.17	40.43	R	14	R					2.1	R					
311	8	3	2010	23	32	33.3	38.90	40.22	R	8	R					2.9	R					
312	8	3	2010	23	40	45.7	38.91	40.18	R	4	R					2.3	R					
313	9	3	2010	0	9	18.8	38.75	40.09	R	5	R							4.0	R			
314	9	3	2010	0	31	26.1	38.85	40.21	R	5	R					3.0	R					
315	9	3	2010	1	12	37.4	38.80	40.04	R	16	R					2.8	R					
316	9	3	2010	1	21	20.1	38.81	40.16	R	5	R					2.5	R					
317	9	3	2010	1	32	45.8	38.86	40.16	R	4	R					3.0	R					
318	9	3	2010	1	36	48.8	38.49	29.78	R	4	R					2.7	R					
319	9	3	2010	1	43	1.7	38.79	40.08	R	5	R					2.5	R					
320	9	3	2010	2	1	0.4	38.87	23.64	N	25	N			4.3	N							

TÜRKİYE DEPREM ETKİNLİĞİ (2010 YILI MART AYI)

No	Tarih - Date			Zaman - Time			Koordinat - Coordinate			Derinlik - Depth		Magnitüd - Magnitude										
	Gün	Ay	Yıl	Saat	Dak.	San.	Enlem-K	Boylam-D	Ref	Km.	Ref	Ms	Ref	Mb	Ref	Md	Ref	MI	Ref	Mw	Ref	
321	9	3	2010	2	41	45.0	38.89	40.18	R	5	R					2.8	R					
322	9	3	2010	2	55	5.4	38.86	23.56	N	33	N			4.6	N							
323	9	3	2010	3	11	49.9	38.80	40.11	R	6	R					2.9	R					
324	9	3	2010	3	21	17.9	38.81	40.16	R	5	R							3.2	R			
325	9	3	2010	3	34	25.4	38.76	40.07	R	11	R					3.0	R					
326	9	3	2010	4	17	7.6	38.86	40.12	R	6	R					2.8	R					
327	9	3	2010	4	19	31.7	37.07	27.52	R	8	R					2.8	R					
328	9	3	2010	4	29	55.5	38.85	40.18	R	5	R					3.1	R					
329	9	3	2010	4	30	10.8	36.99	27.54	R	6	R					2.8	R					
330	9	3	2010	4	53	35.2	38.86	40.23	R	2	R					2.8	R					
331	9	3	2010	5	1	52.4	37.00	27.54	R	2	R					2.8	R					
332	9	3	2010	5	23	37.7	38.67	28.87	R	5	R					3.0	R					
333	9	3	2010	6	14	57.0	38.74	40.14	R	5	R			4.1	N			4.2	R			
334	9	3	2010	6	42	44.2	38.80	40.11	R	8	R					3.1	R					
335	9	3	2010	7	21	23.7	38.88	40.26	R	5	R			4.0	N			4.2	R			
336	9	3	2010	7	26	7.4	38.90	40.21	R	8	R					2.8	R					
337	9	3	2010	7	34	35.5	38.75	40.15	R	5	R							4.1	R			
338	9	3	2010	7	50	14.4	38.85	40.15	R	9	R					2.8	R					
339	9	3	2010	8	38	26.4	39.14	40.57	R	19	R					2.5	R					
340	9	3	2010	9	19	34.2	37.65	35.57	R	14	R					2.7	R					

TÜRKİYE DEPREM ETKİNLİĞİ (2010 YILI MART AYI)

No	Tarih - Date			Zaman - Time			Koordinat - Coordinate			Derinlik - Depth		Magnitüd - Magnitude										
	Gün	Ay	Yıl	Saat	Dak.	San.	Enlem-K	Boylam-D	Ref	Km.	Ref	Ms	Ref	Mb	Ref	Md	Ref	MI	Ref	Mw	Ref	
341	9	3	2010	9	41	7.5	39.27	38.56	R	12	R					2.8	R					
342	9	3	2010	10	1	24.8	37.25	28.15	R	5	R					2.5	R					
343	9	3	2010	10	2	40.0	37.24	28.19	R	5	R					2.6	R					
344	9	3	2010	10	15	3.6	39.31	40.40	R	2	R					2.4	R					
345	9	3	2010	10	20	2.5	36.85	35.23	R	17	R					2.5	R					
346	9	3	2010	10	30	17.6	38.80	40.06	R	5	R					2.6	R					
347	9	3	2010	10	48	54.7	37.03	34.43	R	9	R					2.5	R					
348	9	3	2010	11	5	2.8	40.68	34.77	R	14	R					3.0	R					
349	9	3	2010	11	7	24.8	37.40	35.47	R	26	R					2.6	R					
350	9	3	2010	11	46	35.2	38.86	40.17	R	14	R					3.0	R	3.1	R			
351	9	3	2010	12	1	12.6	38.64	30.38	R	18	R					2.4	R					
352	9	3	2010	12	10	29.5	38.82	40.26	R	8	R					3.0	R					
353	9	3	2010	12	45	36.3	38.73	40.08	R	11	R					2.8	R					
354	9	3	2010	13	10	0.8	38.91	40.22	R	4	R					2.4	R					
355	9	3	2010	14	9	21.0	39.60	44.20	R	8	R							2.8	R			
356	9	3	2010	14	26	23.5	37.14	28.24	R	18	R					2.6	R					
357	9	3	2010	15	12	9.6	40.35	27.87	R	7	R					2.4	R					
358	9	3	2010	15	35	2.8	39.89	39.14	R	5	R							4.2	R			
359	9	3	2010	15	37	39.3	39.88	39.17	R	9	R					2.8	R					
360	9	3	2010	15	43	20.8	39.90	39.20	R	9	R					2.8	R					

TÜRKİYE DEPREM ETKİNLİĞİ (2010 YILI MART AYI)

No	Tarih - Date			Zaman - Time			Koordinat - Coordinate			Derinlik - Depth		Magnitüd - Magnitude										
	Gün	Ay	Yıl	Saat	Dak.	San.	Enlem-K	Boylam-D	Ref	Km.	Ref	Ms	Ref	Mb	Ref	Md	Ref	MI	Ref	Mw	Ref	
361	9	3	2010	15	45	49.2	37.50	35.55	R	6	R					2.3	R					
362	9	3	2010	15	46	21.4	39.87	39.11	R	12	R					2.9	R					
363	9	3	2010	15	54	48.6	39.86	39.16	R	10	R					2.7	R					
364	9	3	2010	15	58	13.7	37.20	28.13	R	7	R					2.6	R					
365	9	3	2010	16	6	51.4	39.94	39.15	R	11	R					2.8	R					
366	9	3	2010	16	16	33.1	40.80	29.15	R	15	R					2.4	R					
367	9	3	2010	17	10	39.5	38.76	40.05	R	5	R					3.5	R					
368	9	3	2010	17	20	18.9	38.77	40.08	R	5	R					3.0	R					
369	9	3	2010	17	40	5.3	38.78	40.06	R	5	R					3.1	R					
370	9	3	2010	17	41	40.7	38.70	40.17	R	10	R					2.5	R					
371	9	3	2010	17	43	10.6	38.76	40.05	R	8	R					2.8	R					
372	9	3	2010	17	47	36.0	38.59	31.76	R	8	R					3.0	R					
373	9	3	2010	17	48	32.5	36.00	29.55	R	5	R					3.2	R					
374	9	3	2010	17	50	28.4	39.86	39.13	R	11	R					2.6	R					
375	9	3	2010	18	14	34.7	39.91	39.14	R	6	R							4.0	R			
376	9	3	2010	18	23	57.9	38.78	40.08	R	2	R					2.5	R					
377	9	3	2010	18	44	3.9	37.22	35.65	R	8	R					2.7	R					
378	9	3	2010	19	20	26.7	38.80	40.09	R	8	R					2.5	R					
379	9	3	2010	20	46	1.1	38.61	39.95	R	8	R					2.9	R					
380	9	3	2010	21	53	19.7	38.76	40.06	R	6	R					2.8	R					

TÜRKİYE DEPREM ETKİNLİĞİ (2010 YILI MART AYI)

No	Tarih - Date			Zaman - Time			Koordinat - Coordinate			Derinlik - Depth		Magnitüd - Magnitude									
	Gün	Ay	Yıl	Saat	Dak.	San.	Enlem-K	Boylam-D	Ref	Km.	Ref	Ms	Ref	Mb	Ref	Md	Ref	MI	Ref	Mw	Ref
381	9	3	2010	21	59	38.7	38.68	39.97	R	8	R					2.7	R				
382	9	3	2010	22	13	47.4	38.85	28.03	R	5	R					2.9	R				
383	9	3	2010	23	4	11.6	38.85	40.13	R	5	R					2.8	R				
384	9	3	2010	23	8	49.5	38.78	40.14	R	5	R					3.0	R				
385	10	3	2010	0	7	4.2	38.70	40.07	R	9	R					3.0	R				
386	10	3	2010	0	8	22.6	38.71	40.04	R	5	R					3.1	R				
387	10	3	2010	0	31	32.4	38.80	40.13	R	14	R					2.8	R				
388	10	3	2010	0	35	40.6	37.94	32.51	R	13	R					2.7	R				
389	10	3	2010	0	50	8.5	39.85	39.19	R	8	R					2.7	R				
390	10	3	2010	2	3	17.4	38.75	27.78	R	4	R					2.9	R				
391	10	3	2010	2	5	34.7	38.88	40.21	R	2	R					2.8	R				
392	10	3	2010	2	9	22.0	38.82	40.19	R	6	R					3.2	R				
393	10	3	2010	2	55	4.2	38.82	40.11	R	9	R					2.7	R				
394	10	3	2010	3	27	13.3	35.73	29.49	R	12	R					3.5	R				
395	10	3	2010	4	30	16.9	38.78	40.14	R	5	R					2.4	R				
396	10	3	2010	4	52	28.4	39.66	40.73	R	20	R					2.4	R				
397	10	3	2010	4	59	24.2	38.72	40.04	R	5	R					3.1	R				
398	10	3	2010	5	10	27.9	38.85	40.22	R	5	R					2.7	R				
399	10	3	2010	5	35	47.5	36.78	31.08	R	24	R					3.2	R				
400	10	3	2010	6	20	1.0	38.78	40.20	R	3	R					3.0	R				

TÜRKİYE DEPREM ETKİNLİĞİ (2010 YILI MART AYI)

No	Tarih - Date			Zaman - Time			Koordinat - Coordinate			Derinlik - Depth		Magnitüd - Magnitude										
	Gün	Ay	Yıl	Saat	Dak.	San.	Enlem-K	Boylam-D	Ref	Km.	Ref	Ms	Ref	Mb	Ref	Md	Ref	MI	Ref	Mw	Ref	
401	10	3	2010	6	47	38.5	38.78	40.30	R	5	R					2.5	R					
402	10	3	2010	7	21	37.8	39.30	38.45	R	18	R					2.5	R					
403	10	3	2010	7	24	49.0	35.10	40.58	R	21	R							3.5	R			
404	10	3	2010	8	21	37.2	38.77	40.25	R	5	R					2.7	R					
405	10	3	2010	8	43	59.6	40.24	25.29	R	5	R					3.1	R					
406	10	3	2010	9	44	8.4	37.22	28.27	R	18	R					2.6	R					
407	10	3	2010	9	50	41.6	37.25	28.14	R	5	R					2.7	R					
408	10	3	2010	10	36	49.0	38.78	40.16	R	6	R					2.4	R					
409	10	3	2010	10	50	18.5	37.01	28.42	R	4	R					2.9	R					
410	10	3	2010	11	12	34.0	38.03	30.03	R	8	R					2.8	R					
411	10	3	2010	11	49	54.0	37.96	29.12	R	10	R					2.8	R					
412	10	3	2010	11	57	24.5	40.02	26.93	R	16	R					2.3	R					
413	10	3	2010	12	21	38.5	37.18	28.20	R	5	R					2.4	R					
414	10	3	2010	14	55	38.4	39.99	29.78	R	8	R					2.9	R					
415	10	3	2010	15	0	1.7	38.85	35.78	R	5	R					2.9	R					
416	10	3	2010	15	18	4.2	39.40	36.54	R	5	R					2.9	R					
417	10	3	2010	15	38	36.9	38.88	27.77	R	6	R					2.6	R					
418	10	3	2010	15	47	21.0	37.24	28.18	R	5	R					2.7	R					
419	10	3	2010	15	57	35.9	40.44	29.17	R	6	R					2.9	R					
420	10	3	2010	16	2	29.3	37.45	28.07	R	4	R					2.5	R					

TÜRKİYE DEPREM ETKİNLİĞİ (2010 YILI MART AYI)

No	Tarih - Date			Zaman - Time			Koordinat - Coordinate			Derinlik - Depth		Magnitüd - Magnitude										
	Gün	Ay	Yıl	Saat	Dak.	San.	Enlem-K	Boylam-D	Ref	Km.	Ref	Ms	Ref	Mb	Ref	Md	Ref	MI	Ref	Mw	Ref	
421	10	3	2010	16	8	40.4	37.21	28.81	R	5	R					2.6	R					
422	10	3	2010	16	32	29.1	36.93	43.50	R	5	R					2.9	R					
423	10	3	2010	17	22	44.0	38.74	40.07	R	3	R							3.3	R			
424	10	3	2010	17	51	0.6	36.37	28.67	R	5	R					2.6	R					
425	10	3	2010	17	52	13.4	38.11	32.11	R	8	R					2.8	R					
426	10	3	2010	17	53	22.3	35.79	33.41	R	72	R					3.2	R					
427	10	3	2010	18	15	54.3	38.88	40.24	R	3	R					2.8	R					
428	10	3	2010	18	18	34.6	38.83	40.21	R	5	R							2.9	R			
429	10	3	2010	18	28	36.5	38.86	40.15	R	9	R					2.3	R					
430	10	3	2010	18	30	58.6	38.84	40.20	R	5	R					2.5	R					
431	10	3	2010	18	39	49.9	38.90	44.70	R	5	R					3.1	R					
432	10	3	2010	19	53	48.0	38.59	40.88	R	6	R					3.3	R					
433	10	3	2010	20	0	33.2	38.83	40.11	R	5	R					2.8	R					
434	10	3	2010	20	17	20.2	36.79	29.33	R	9	R					2.4	R					
435	10	3	2010	20	40	50.1	38.52	25.66	R	10	R					3.4	R					
436	10	3	2010	21	29	53.1	38.80	40.00	R	5	R					2.7	R					
437	10	3	2010	21	30	28.9	38.80	32.11	R	19	R					2.6	R					
438	10	3	2010	21	30	50.2	38.75	40.07	R	5	R					2.9	R					
439	10	3	2010	21	33	22.0	38.73	40.09	R	5	R					3.0	R					
440	10	3	2010	22	21	14.9	37.51	35.56	R	8	R					2.3	R					

TÜRKİYE DEPREM ETKİNLİĞİ (2010 YILI MART AYI)

No	Tarih - Date			Zaman - Time			Koordinat - Coordinate			Derinlik - Depth		Magnitüd - Magnitude									
	Gün	Ay	Yıl	Saat	Dak.	San.	Enlem-K	Boylam-D	Ref	Km.	Ref	Ms	Ref	Mb	Ref	Md	Ref	MI	Ref	Mw	Ref
441	10	3	2010	22	30	19.9	38.86	40.17	R	3	R					3.0	R				
442	10	3	2010	22	43	13.0	38.13	28.88	R	5	R					2.7	R				
443	10	3	2010	22	57	54.8	38.75	40.11	R	3	R					2.8	R				
444	10	3	2010	23	27	24.4	37.03	27.38	R	2	R					2.8	R				
445	10	3	2010	23	33	16.4	38.83	40.19	R	5	R					2.8	R				
446	10	3	2010	23	41	40.5	38.62	26.70	R	12	R					3.0	R				
447	10	3	2010	23	54	45.2	36.20	35.78	R	15	R					3.4	R				
448	11	3	2010	0	27	52.9	38.74	40.16	R	5	R					3.0	R				
449	11	3	2010	0	38	52.1	38.26	25.92	R	5	R					2.7	R				
450	11	3	2010	0	40	52.3	34.66	25.53	R	5	R					3.0	R				
451	11	3	2010	1	57	53.5	38.78	40.14	R	8	R					3.1	R				
452	11	3	2010	3	13	9.4	39.33	43.88	R	8	R					2.7	R				
453	11	3	2010	3	51	1.8	37.73	29.30	R	8	R					2.9	R				
454	11	3	2010	3	53	46.6	41.79	32.46	R	5	R					3.4	R				
455	11	3	2010	4	6	24.8	38.79	40.15	R	3	R					3.1	R				
456	11	3	2010	5	2	1.9	39.31	27.77	R	2	R					3.0	R				
457	11	3	2010	5	4	22.2	38.76	40.18	R	7	R					3.1	R				
458	11	3	2010	5	21	21.3	38.83	40.16	R	7	R					2.8	R				
459	11	3	2010	5	31	12.6	38.78	40.13	R	5	R					2.9	R				
460	11	3	2010	5	56	45.7	38.89	40.13	R	5	R					2.7	R				

TÜRKİYE DEPREM ETKİNLİĞİ (2010 YILI MART AYI)

No	Tarih - Date			Zaman - Time			Koordinat - Coordinate			Derinlik - Depth		Magnitüd - Magnitude										
	Gün	Ay	Yıl	Saat	Dak.	San.	Enlem-K	Boylam-D	Ref	Km.	Ref	Ms	Ref	Mb	Ref	Md	Ref	MI	Ref	Mw	Ref	
461	11	3	2010	6	30	48.9	38.79	40.11	R	2	R					3.5	R					
462	11	3	2010	7	45	22.8	37.25	28.19	R	11	R					2.6	R					
463	11	3	2010	9	2	43.9	38.81	40.12	R	5	R					3.6	R					
464	11	3	2010	9	49	7.8	37.16	28.12	R	5	R					2.6	R					
465	11	3	2010	10	43	12.4	39.61	38.76	R	24	R					2.7	R					
466	11	3	2010	10	57	27.1	38.82	40.08	R	8	R					3.3	R					
467	11	3	2010	11	12	18.6	39.10	29.07	R	10	R					2.8	R					
468	11	3	2010	11	49	31.0	37.56	35.39	R	12	R					2.6	R					
469	11	3	2010	11	53	25.0	38.74	40.19	R	17	R					2.7	R					
470	11	3	2010	12	8	1.8	40.71	25.45	R	2	R					3.3	R					
471	11	3	2010	12	17	57.0	37.77	41.83	R	24	R					3.2	R					
472	11	3	2010	13	35	14.8	38.12	27.30	R	15	R					2.4	R					
473	11	3	2010	14	4	50.2	38.75	40.10	R	10	R					3.0	R					
474	11	3	2010	14	24	48.7	40.70	25.19	R	11	R					2.8	R					
475	11	3	2010	14	46	38.3	38.71	39.98	R	5	R					3.3	R					
476	11	3	2010	15	44	43.6	37.23	28.15	R	5	R					2.6	R					
477	11	3	2010	15	46	16.2	37.26	28.18	R	5	R					2.7	R					
478	11	3	2010	16	33	33.3	39.83	41.57	R	12	R					2.9	R					
479	11	3	2010	16	55	32.3	37.57	35.57	R	10	R					2.5	R					
480	11	3	2010	16	57	53.2	38.70	40.04	R	5	R					3.1	R					

TÜRKİYE DEPREM ETKİNLİĞİ (2010 YILI MART AYI)

No	Tarih - Date			Zaman - Time			Koordinat - Coordinate			Derinlik - Depth		Magnitüd - Magnitude									
	Gün	Ay	Yıl	Saat	Dak.	San.	Enlem-K	Boylam-D	Ref	Km.	Ref	Ms	Ref	Mb	Ref	Md	Ref	MI	Ref	Mw	Ref
481	11	3	2010	17	4	57.3	39.13	29.10	R	5	R					2.8	R				
482	11	3	2010	18	8	17.7	39.93	27.00	R	5	R					2.7	R				
483	11	3	2010	18	57	52.5	37.01	28.43	R	10	R					2.7	R				
484	11	3	2010	19	44	52.3	38.70	40.13	R	3	R					2.8	R				
485	11	3	2010	21	18	20.4	39.61	25.62	R	16	R					2.7	R				
486	11	3	2010	21	19	50.6	36.97	29.29	R	6	R					2.7	R				
487	11	3	2010	23	21	50.0	39.12	29.08	R	8	R					2.7	R				
488	11	3	2010	23	25	30.7	39.23	29.45	R	5	R					2.7	R				
489	11	3	2010	23	27	31.2	36.61	36.44	R	5	R					2.9	R				
490	12	3	2010	0	55	27.2	39.42	32.90	R	8	R					2.6	R				
491	12	3	2010	1	35	12.7	38.73	40.11	R	5	R							3.6	R		
492	12	3	2010	1	36	36.1	38.73	40.15	R	3	R					3.0	R				
493	12	3	2010	1	44	47.7	38.70	40.13	R	4	R					3.1	R				
494	12	3	2010	1	53	59.2	36.43	23.49	N	68	N			4.2	N						
495	12	3	2010	2	33	6.5	38.72	40.09	R	6	R					3.1	R				
496	12	3	2010	4	6	49.7	38.93	40.19	R	6	R					2.7	R				
497	12	3	2010	4	29	9.2	38.87	40.22	R	2	R					3.1	R				
498	12	3	2010	7	32	52.5	38.71	39.80	R	10	R					2.7	R				
499	12	3	2010	8	32	8.1	37.29	28.17	R	5	R					2.9	R				
500	12	3	2010	8	42	56.1	38.71	40.04	R	6	R					2.7	R				

TÜRKİYE DEPREM ETKİNLİĞİ (2010 YILI MART AYI)

No	Tarih - Date			Zaman - Time			Koordinat - Coordinate			Derinlik - Depth		Magnitüd - Magnitude										
	Gün	Ay	Yıl	Saat	Dak.	San.	Enlem-K	Boylam-D	Ref	Km.	Ref	Ms	Ref	Mb	Ref	Md	Ref	MI	Ref	Mw	Ref	
501	12	3	2010	9	42	49.1	38.84	40.20	R	15	R					2.8	R					
502	12	3	2010	9	45	23.9	37.14	28.65	R	22	R					2.6	R					
503	12	3	2010	9	46	6.6	38.06	32.42	R	24	R					2.4	R					
504	12	3	2010	9	51	1.4	37.23	28.14	R	2	R					2.8	R					
505	12	3	2010	9	56	12.9	39.95	27.09	R	11	R					2.7	R					
506	12	3	2010	10	50	5.0	40.60	31.01	R	28	R					2.4	R					
507	12	3	2010	11	35	4.5	39.86	24.40	R	32	R					3.2	R					
508	12	3	2010	11	38	36.0	38.80	40.12	R	5	R							3.4	R			
509	12	3	2010	11	42	51.4	35.58	27.21	N	31	N			4.2	N			3.9	R			
510	12	3	2010	13	25	21.0	38.64	30.44	R	6	R					2.5	R					
511	12	3	2010	15	5	3.8	39.56	40.14	R	5	R					3.0	R					
512	12	3	2010	15	31	7.1	39.48	31.13	R	2	R					2.9	R					
513	12	3	2010	15	50	50.5	37.26	28.27	R	8	R					2.8	R					
514	12	3	2010	15	51	1.1	36.86	36.42	R	9	R					2.8	R					
515	12	3	2010	16	25	6.4	39.93	38.98	R	17	R					3.2	R					
516	12	3	2010	16	55	59.9	38.71	40.11	R	5	R					3.4	R					
517	12	3	2010	17	21	39.7	36.91	29.40	R	8	R					2.7	R					
518	12	3	2010	18	36	20.8	39.04	40.28	R	3	R					2.7	R					
519	12	3	2010	19	48	56.9	37.60	35.56	R	5	R					2.5	R					
520	12	3	2010	22	50	44.7	38.77	40.08	R	3	R							3.8	R			

TÜRKİYE DEPREM ETKİNLİĞİ (2010 YILI MART AYI)

No	Tarih - Date			Zaman - Time			Koordinat - Coordinate			Derinlik - Depth		Magnitüd - Magnitude										
	Gün	Ay	Yıl	Saat	Dak.	San.	Enlem-K	Boylam-D	Ref	Km.	Ref	Ms	Ref	Mb	Ref	Md	Ref	MI	Ref	Mw	Ref	
521	12	3	2010	23	0	59.6	38.85	40.09	R	8	R					2.8	R					
522	12	3	2010	23	7	39.5	37.63	38.87	R	14	R					2.9	R					
523	12	3	2010	23	20	31.1	38.60	40.89	R	12	R					3.0	R					
524	12	3	2010	23	35	30.3	39.57	25.89	R	5	R							3.4	R			
525	12	3	2010	23	39	27.0	38.73	40.01	R	16	R					2.9	R					
526	12	3	2010	23	50	15.3	36.41	30.19	R	61	R					3.4	R					
527	13	3	2010	0	2	5.0	38.59	40.88	R	5	R					3.3	R					
528	13	3	2010	0	14	42.2	37.07	36.43	R	5	R					3.0	R					
529	13	3	2010	0	43	21.5	36.99	29.24	R	5	R					2.7	R					
530	13	3	2010	0	49	19.2	37.21	35.77	R	6	R					2.7	R					
531	13	3	2010	0	58	51.5	38.17	29.42	R	14	R					2.7	R					
532	13	3	2010	1	19	21.4	40.37	27.18	R	16	R							3.6	R			
533	13	3	2010	2	43	48.6	38.81	40.20	R	10	R					3.2	R					
534	13	3	2010	2	46	14.2	41.81	32.54	R	5	R					3.2	R					
535	13	3	2010	6	46	1.6	35.54	26.92	R	28	R					3.3	R					
536	13	3	2010	7	13	25.0	36.42	26.60	R	5	R					3.0	R					
537	13	3	2010	9	4	7.1	37.13	28.15	R	5	R					2.7	R					
538	13	3	2010	9	41	53.1	38.82	40.12	R	6	R					3.1	R					
539	13	3	2010	10	0	54.3	40.16	30.00	R	8	R					2.6	R					
540	13	3	2010	10	27	43.6	35.79	30.97	R	12	R			4.1	N			4.0	R			

TÜRKİYE DEPREM ETKİNLİĞİ (2010 YILI MART AYI)

No	Tarih - Date			Zaman - Time			Koordinat - Coordinate			Derinlik - Depth		Magnitüd - Magnitude										
	Gün	Ay	Yıl	Saat	Dak.	San.	Enlem-K	Boylam-D	Ref	Km.	Ref	Ms	Ref	Mb	Ref	Md	Ref	MI	Ref	Mw	Ref	
541	13	3	2010	10	44	39.7	36.07	30.86	R	18	R					3.4	R					
542	13	3	2010	11	5	19.5	38.58	25.69	R	7	R					3.0	R					
543	13	3	2010	12	6	43.9	38.72	39.98	R	6	R					3.0	R					
544	13	3	2010	12	39	49.5	37.35	28.06	R	24	R					2.7	R					
545	13	3	2010	13	19	25.9	39.25	27.81	R	5	R							3.2	R			
546	13	3	2010	16	3	54.2	37.20	28.16	R	8	R					2.8	R					
547	13	3	2010	16	20	37.5	37.29	28.22	R	7	R					2.7	R					
548	13	3	2010	16	27	54.2	38.83	26.32	R	5	R					2.6	R					
549	13	3	2010	18	22	59.9	38.69	40.23	R	13	R					3.3	R					
550	13	3	2010	20	18	54.5	40.06	38.13	R	10	R							3.4	R			
551	13	3	2010	21	10	53.4	38.63	39.93	R	12	R					3.2	R					
552	13	3	2010	21	24	49.6	39.49	43.94	R	5	R							3.8	R			
553	14	3	2010	0	16	34.1	39.80	42.86	R	12	R					2.8	R					
554	14	3	2010	1	1	45.5	37.62	37.50	R	5	R					3.4	R	3.3	R			
555	14	3	2010	1	25	17.6	37.34	37.51	R	15	R					2.8	R					
556	14	3	2010	3	42	21.4	38.68	39.97	R	5	R					3.1	R					
557	14	3	2010	4	7	13.2	40.16	25.22	R	12	R					2.8	R					
558	14	3	2010	4	25	14.5	40.20	25.28	R	5	R					2.9	R					
559	14	3	2010	4	46	12.6	34.50	32.00	N	22	N							3.5	R			
560	14	3	2010	5	42	6.3	38.50	25.65	R	5	R					3.3	R					

TÜRKİYE DEPREM ETKİNLİĞİ (2010 YILI MART AYI)

No	Tarih - Date			Zaman - Time			Koordinat - Coordinate			Derinlik - Depth		Magnitüd - Magnitude										
	Gün	Ay	Yıl	Saat	Dak.	San.	Enlem-K	Boylam-D	Ref	Km.	Ref	Ms	Ref	Mb	Ref	Md	Ref	MI	Ref	Mw	Ref	
561	14	3	2010	6	37	15.9	34.37	32.07	R	7	R					3.3	R					
562	14	3	2010	6	40	37.9	35.34	28.59	R	5	R					3.6	R					
563	14	3	2010	6	46	2.2	34.51	32.02	R	5	R							3.6	R			
564	14	3	2010	6	58	29.5	34.63	32.00	R	5	R					3.3	R					
565	14	3	2010	8	2	0.7	38.75	40.05	R	10	R					2.6	R					
566	14	3	2010	8	9	23.7	38.31	31.96	R	14	R					2.6	R					
567	14	3	2010	8	10	27.1	38.25	31.82	R	6	R					2.5	R					
568	14	3	2010	9	11	29.4	37.21	28.20	R	5	R					2.6	R					
569	14	3	2010	12	36	51.2	39.80	38.78	R	4	R					2.7	R					
570	14	3	2010	14	56	41.1	37.24	28.17	R	6	R					2.6	R					
571	14	3	2010	18	16	12.0	37.86	27.16	R	5	R							3.2	R			
572	14	3	2010	18	57	51.4	35.71	28.72	R	9	R							3.6	R			
573	14	3	2010	19	18	26.5	37.03	29.17	R	21	R					2.8	R					
574	14	3	2010	19	55	56.0	39.34	29.09	R	5	R					3.0	R					
575	14	3	2010	20	14	14.5	37.10	34.59	R	20	R					2.7	R					
576	14	3	2010	22	46	23.0	39.95	38.15	R	9	R					2.8	R					
577	14	3	2010	23	7	12.4	39.16	33.15	R	20	R					2.8	R					
578	14	3	2010	23	38	50.1	37.60	43.31	R	9	R					3.4	R					
579	15	3	2010	1	10	21.8	37.51	35.55	R	10	R					2.4	R					
580	15	3	2010	3	0	39.3	41.01	32.96	R	5	R					2.7	R					

TÜRKİYE DEPREM ETKİNLİĞİ (2010 YILI MART AYI)

No	Tarih - Date			Zaman - Time			Koordinat - Coordinate			Derinlik - Depth		Magnitüd - Magnitude										
	Gün	Ay	Yıl	Saat	Dak.	San.	Enlem-K	Boylam-D	Ref	Km.	Ref	Ms	Ref	Mb	Ref	Md	Ref	MI	Ref	Mw	Ref	
581	15	3	2010	3	37	25.3	38.31	30.11	R	21	R					2.9	R					
582	15	3	2010	5	1	32.9	39.46	33.08	R	6	R					3.2	R					
583	15	3	2010	8	3	29.6	37.24	28.21	R	8	R					2.8	R					
584	15	3	2010	9	19	19.2	36.89	35.15	R	26	R					2.3	R					
585	15	3	2010	9	44	12.3	38.86	40.16	R	9	R					2.7	R					
586	15	3	2010	10	32	8.2	40.85	30.89	R	16	R					2.6	R					
587	15	3	2010	12	29	27.6	37.29	28.22	R	3	R					2.5	R					
588	15	3	2010	13	45	48.4	37.41	38.56	R	9	R					3.0	R					
589	15	3	2010	15	11	39.6	39.87	33.03	R	2	R					2.7	R					
590	15	3	2010	15	47	51.8	37.11	28.22	R	20	R					2.6	R					
591	15	3	2010	16	0	22.9	37.38	28.28	R	5	R					2.6	R					
592	15	3	2010	16	8	54.8	37.07	28.04	R	6	R					2.7	R					
593	15	3	2010	16	14	32.9	37.29	28.25	R	3	R					2.6	R					
594	15	3	2010	17	6	17.0	40.64	28.98	R	7	R					2.4	R					
595	15	3	2010	17	26	30.9	38.07	44.56	R	5	R					3.2	R					
596	15	3	2010	17	35	49.3	40.66	29.39	R	6	R					2.8	R					
597	15	3	2010	18	52	37.9	38.72	40.07	R	8	R					2.8	R					
598	15	3	2010	18	57	44.0	41.51	40.20	R	26	R					3.1	R					
599	15	3	2010	20	24	28.0	38.61	39.80	R	7	R					2.7	R					
600	15	3	2010	20	38	28.2	39.76	40.56	R	16	R					2.7	R					

TÜRKİYE DEPREM ETKİNLİĞİ (2010 YILI MART AYI)

No	Tarih - Date			Zaman - Time			Koordinat - Coordinate			Derinlik - Depth		Magnitüd - Magnitude										
	Gün	Ay	Yıl	Saat	Dak.	San.	Enlem-K	Boylam-D	Ref	Km.	Ref	Ms	Ref	Mb	Ref	Md	Ref	MI	Ref	Mw	Ref	
601	15	3	2010	20	47	9.1	39.29	25.61	R	24	R					2.9	R					
602	15	3	2010	22	24	11.5	37.26	43.80	R	2	R					2.7	R					
603	15	3	2010	22	44	54.7	39.07	27.85	R	9	R					2.5	R					
604	15	3	2010	23	42	46.5	36.74	36.44	R	5	R					3.0	R					
605	16	3	2010	0	41	12.8	36.77	34.18	R	10	R					3.0	R					
606	16	3	2010	3	3	26.0	37.15	28.69	R	8	R					2.8	R					
607	16	3	2010	3	41	58.6	38.99	29.82	R	5	R					2.7	R					
608	16	3	2010	4	5	8.0	37.00	35.67	R	22	R					2.2	R					
609	16	3	2010	8	18	55.8	39.04	40.36	R	4	R					2.7	R					
610	16	3	2010	9	20	11.5	38.61	39.75	R	14	R					3.3	R					
611	16	3	2010	9	33	27.5	38.66	39.74	R	7	R					3.8	R					
612	16	3	2010	9	35	20.8	38.63	39.78	R	5	R					2.5	R					
613	16	3	2010	9	53	51.5	38.80	40.13	R	5	R					2.7	R					
614	16	3	2010	9	55	48.2	38.64	39.76	R	5	R					2.9	R					
615	16	3	2010	10	5	27.8	38.67	39.76	R	5	R					2.6	R					
616	16	3	2010	10	8	16.4	38.86	40.14	R	10	R					2.7	R					
617	16	3	2010	10	23	53.8	40.60	36.10	R	9	R					2.6	R					
618	16	3	2010	10	26	56.2	38.28	27.14	R	5	R					2.1	R					
619	16	3	2010	11	6	4.9	37.87	29.99	R	5	R					2.6	R					
620	16	3	2010	11	48	23.5	39.15	26.40	R	7	R					2.8	R					

TÜRKİYE DEPREM ETKİNLİĞİ (2010 YILI MART AYI)

No	Tarih - Date			Zaman - Time			Koordinat - Coordinate			Derinlik - Depth		Magnitüd - Magnitude									
	Gün	Ay	Yıl	Saat	Dak.	San.	Enlem-K	Boylam-D	Ref	Km.	Ref	Ms	Ref	Mb	Ref	Md	Ref	MI	Ref	Mw	Ref
621	16	3	2010	11	57	30.8	37.00	28.71	R	3	R					2.5	R				
622	16	3	2010	13	24	41.1	39.44	39.49	R	3	R					3.1	R				
623	16	3	2010	13	43	59.1	38.66	39.62	R	8	R					2.6	R				
624	16	3	2010	14	40	16.9	39.87	30.02	R	13	R					2.7	R				
625	16	3	2010	14	56	7.5	38.36	27.28	R	16	R					2.4	R				
626	16	3	2010	15	25	21.6	39.40	39.58	R	15	R					2.8	R				
627	16	3	2010	15	30	36.1	38.85	40.11	R	5	R					2.6	R				
628	16	3	2010	15	31	21.7	37.24	28.17	R	15	R					2.5	R				
629	16	3	2010	15	33	48.6	38.33	31.81	R	8	R					2.7	R				
630	16	3	2010	15	48	15.9	38.33	31.85	R	6	R					2.7	R				
631	16	3	2010	16	30	4.0	37.07	28.56	R	7	R					3.0	R				
632	16	3	2010	16	37	15.5	38.80	40.10	R	8	R					2.7	R				
633	16	3	2010	16	52	3.7	37.28	28.19	R	7	R					2.8	R				
634	16	3	2010	17	12	40.5	39.48	33.05	R	5	R					3.0	R				
635	16	3	2010	17	56	32.4	38.82	40.07	R	4	R					2.9	R				
636	16	3	2010	18	44	29.4	40.83	28.46	R	12	R					2.7	R				
637	16	3	2010	19	5	31.6	38.41	40.46	R	7	R					2.7	R				
638	16	3	2010	20	24	27.1	38.92	40.14	R	6	R					2.9	R				
639	16	3	2010	22	1	33.8	35.21	27.52	N	28	N							3.8	R		
640	16	3	2010	22	3	1.4	42.11	33.36	R	16	R					3.3	R				

TÜRKİYE DEPREM ETKİNLİĞİ (2010 YILI MART AYI)

No	Tarih - Date			Zaman - Time			Koordinat - Coordinate			Derinlik - Depth		Magnitüd - Magnitude									
	Gün	Ay	Yıl	Saat	Dak.	San.	Enlem-K	Boylam-D	Ref	Km.	Ref	Ms	Ref	Mb	Ref	Md	Ref	MI	Ref	Mw	Ref
641	16	3	2010	22	10	4.8	37.53	36.21	R	5	R					2.6	R				
642	16	3	2010	23	36	5.6	39.86	24.57	R	24	R					3.2	R				
643	17	3	2010	2	51	59.2	42.06	33.36	R	6	R					3.0	R				
644	17	3	2010	3	25	22.3	38.46	43.02	R	12	R					2.9	R				
645	17	3	2010	3	42	32.2	35.72	31.04	R	20	R					3.4	R				
646	17	3	2010	3	45	2.2	38.74	31.22	R	8	R					2.7	R				
647	17	3	2010	4	28	42.4	39.24	27.62	R	8	R					2.9	R				
648	17	3	2010	4	59	34.7	38.81	40.15	R	4	R					2.8	R				
649	17	3	2010	5	31	46.0	37.25	43.80	R	2	R					2.6	R				
650	17	3	2010	7	52	1.6	37.25	28.18	R	5	R					2.5	R				
651	17	3	2010	9	29	59.3	36.22	27.49	R	11	R					3.3	R				
652	17	3	2010	10	16	33.0	37.36	43.70	R	5	R					3.5	R				
653	17	3	2010	10	23	40.2	38.82	40.12	R	5	R					2.8	R				
654	17	3	2010	11	48	11.6	38.70	39.55	R	5	R					2.6	R				
655	17	3	2010	11	54	39.2	39.95	33.11	R	10	R					2.5	R				
656	17	3	2010	12	10	39.8	39.43	38.70	R	11	R					2.6	R				
657	17	3	2010	13	9	24.7	40.14	29.59	R	10	R					2.4	R				
658	17	3	2010	13	9	47.5	38.85	40.16	R	8	R					2.7	R				
659	17	3	2010	13	26	41.2	38.77	40.07	R	6	R					2.6	R				
660	17	3	2010	14	0	59.9	38.89	40.11	R	9	R					2.7	R				

TÜRKİYE DEPREM ETKİNLİĞİ (2010 YILI MART AYI)

No	Tarih - Date			Zaman - Time			Koordinat - Coordinate			Derinlik - Depth		Magnitüd - Magnitude									
	Gün	Ay	Yıl	Saat	Dak.	San.	Enlem-K	Boylam-D	Ref	Km.	Ref	Ms	Ref	Mb	Ref	Md	Ref	MI	Ref	Mw	Ref
661	17	3	2010	14	4	28.9	39.42	27.85	R	8	R					2.7	R				
662	17	3	2010	14	14	41.0	38.75	40.00	R	6	R					2.9	R				
663	17	3	2010	15	41	3.6	38.46	28.24	R	5	R					2.8	R				
664	17	3	2010	15	42	26.3	41.70	34.91	R	7	R					2.5	R				
665	17	3	2010	15	45	22.5	37.19	28.17	R	4	R					2.6	R				
666	17	3	2010	16	5	21.5	37.26	28.21	R	3	R					2.6	R				
667	17	3	2010	17	2	28.7	37.03	35.66	R	16	R					2.5	R				
668	17	3	2010	17	26	0.6	38.80	40.07	R	7	R					2.8	R				
669	17	3	2010	21	34	6.7	38.45	44.30	R	5	R					2.8	R				
670	17	3	2010	21	46	22.8	40.39	27.79	R	12	R					2.7	R				
671	17	3	2010	23	16	22.0	38.89	40.06	R	2	R					2.5	R				
672	18	3	2010	2	58	36.9	38.65	39.71	R	5	R							3.6	R		
673	18	3	2010	3	53	46.5	37.25	43.82	R	5	R					3.3	R				
674	18	3	2010	6	0	54.2	38.75	27.77	R	8	R					2.5	R				
675	18	3	2010	6	6	34.0	38.76	40.00	R	16	R					2.6	R				
676	18	3	2010	6	10	48.6	38.85	40.26	R	5	R					2.8	R				
677	18	3	2010	6	50	31.8	38.74	40.19	R	26	R					2.5	R				
678	18	3	2010	7	35	16.4	40.18	27.40	R	5	R					2.7	R				
679	18	3	2010	7	42	27.3	37.60	35.87	R	20	R					2.3	R				
680	18	3	2010	7	44	3.4	37.63	35.58	R	8	R							3.4	R		

TÜRKİYE DEPREM ETKİNLİĞİ (2010 YILI MART AYI)

No	Tarih - Date			Zaman - Time			Koordinat - Coordinate			Derinlik - Depth		Magnitüd - Magnitude									
	Gün	Ay	Yıl	Saat	Dak.	San.	Enlem-K	Boylam-D	Ref	Km.	Ref	Ms	Ref	Mb	Ref	Md	Ref	MI	Ref	Mw	Ref
681	18	3	2010	7	45	41.3	37.56	35.59	R	5	R					3.5	R				
682	18	3	2010	8	3	47.8	39.28	29.12	R	5	R					3.0	R				
683	18	3	2010	8	16	27.7	39.42	38.61	R	25	R					2.6	R				
684	18	3	2010	8	41	16.5	39.84	39.17	R	11	R					2.8	R				
685	18	3	2010	9	46	1.6	37.29	28.25	R	5	R					2.7	R				
686	18	3	2010	10	41	18.2	36.93	27.83	R	8	R					2.8	R				
687	18	3	2010	12	39	57.9	37.57	35.62	R	5	R					2.8	R				
688	18	3	2010	12	53	53.9	38.60	40.90	R	2	R					2.3	R				
689	18	3	2010	12	54	24.0	38.19	39.20	R	24	R					2.5	R				
690	18	3	2010	13	11	59.5	34.86	33.16	R	32	R					2.6	R				
691	18	3	2010	13	25	39.5	37.28	28.31	R	3	R					2.5	R				
692	18	3	2010	13	46	10.7	38.79	40.09	R	7	R							3.5	R		
693	18	3	2010	14	25	19.6	39.09	29.11	R	7	R					2.7	R				
694	18	3	2010	15	47	55.3	40.57	30.29	R	9	R					2.6	R				
695	18	3	2010	15	54	51.9	37.27	28.19	R	7	R					2.8	R				
696	18	3	2010	16	1	48.1	40.61	27.53	R	5	R					2.6	R				
697	18	3	2010	16	31	34.5	37.14	28.54	R	3	R					2.5	R				
698	18	3	2010	18	6	13.7	40.63	30.17	R	9	R					2.5	R				
699	18	3	2010	18	23	24.5	37.50	36.50	R	5	R					2.9	R				
700	18	3	2010	18	35	0.4	37.60	35.61	R	8	R					3.1	R				

TÜRKİYE DEPREM ETKİNLİĞİ (2010 YILI MART AYI)

No	Tarih - Date			Zaman - Time			Koordinat - Coordinate			Derinlik - Depth		Magnitüd - Magnitude									
	Gün	Ay	Yıl	Saat	Dak.	San.	Enlem-K	Boylam-D	Ref	Km.	Ref	Ms	Ref	Mb	Ref	Md	Ref	MI	Ref	Mw	Ref
701	18	3	2010	20	20	30.9	38.72	39.97	R	7	R					3.0	R				
702	18	3	2010	21	47	59.5	36.96	27.84	R	11	R					2.7	R				
703	18	3	2010	22	0	28.8	38.36	28.38	R	12	R					2.4	R				
704	18	3	2010	22	16	35.1	41.05	33.49	R	10	R					2.7	R				
705	19	3	2010	0	11	24.4	38.80	40.06	R	5	R					3.1	R				
706	19	3	2010	0	49	7.5	37.93	32.55	R	5	R					2.5	R				
707	19	3	2010	2	23	36.8	36.27	30.81	R	20	R					3.3	R				
708	19	3	2010	3	29	10.6	40.56	26.21	R	12	R					2.3	R				
709	19	3	2010	3	32	17.9	39.13	26.12	R	13	R					3.5	R				
710	19	3	2010	5	5	16.1	38.56	40.84	R	6	R					2.7	R				
711	19	3	2010	6	21	33.5	39.39	33.15	R	5	R					3.4	R				
712	19	3	2010	7	15	44.4	39.48	38.67	R	12	R					2.4	R				
713	19	3	2010	7	18	16.1	37.22	28.15	R	4	R					2.4	R				
714	19	3	2010	7	24	39.6	40.71	27.62	R	2	R					2.2	R				
715	19	3	2010	7	44	22.0	38.63	39.14	R	15	R					2.4	R				
716	19	3	2010	8	27	56.1	38.44	39.30	R	4	R					2.3	R				
717	19	3	2010	8	52	20.2	37.26	28.22	R	5	R					2.8	R				
718	19	3	2010	9	43	58.2	37.21	28.17	R	2	R					2.6	R				
719	19	3	2010	10	4	13.5	39.23	38.36	R	4	R					2.5	R				
720	19	3	2010	10	19	39.3	37.16	28.11	R	5	R					2.6	R				

TÜRKİYE DEPREM ETKİNLİĞİ (2010 YILI MART AYI)

No	Tarih - Date			Zaman - Time			Koordinat - Coordinate			Derinlik - Depth		Magnitüd - Magnitude									
	Gün	Ay	Yıl	Saat	Dak.	San.	Enlem-K	Boylam-D	Ref	Km.	Ref	Ms	Ref	Mb	Ref	Md	Ref	MI	Ref	Mw	Ref
721	19	3	2010	10	38	8.6	36.72	34.77	R	6	R					2.2	R				
722	19	3	2010	10	55	39.3	41.62	27.61	R	5	R					1.9	R				
723	19	3	2010	11	9	38.2	37.43	36.51	R	8	R					2.2	R				
724	19	3	2010	11	44	52.0	39.19	31.97	R	5	R					3.1	R				
725	19	3	2010	11	54	17.8	38.12	32.80	R	6	R					2.3	R				
726	19	3	2010	12	31	13.7	37.06	29.94	R	5	R					2.7	R				
727	19	3	2010	12	45	28.0	34.99	33.05	R	6	R					2.3	R				
728	19	3	2010	12	52	6.5	39.98	27.08	R	8	R					2.5	R				
729	19	3	2010	13	22	31.8	39.02	27.29	R	3	R					2.7	R				
730	19	3	2010	13	25	50.2	38.93	30.33	R	2	R					2.4	R				
731	19	3	2010	13	50	16.4	38.81	40.08	R	23	R					2.6	R				
732	19	3	2010	14	0	49.8	39.82	32.54	R	17	R					2.1	R				
733	19	3	2010	14	3	24.1	38.84	30.20	R	13	R					2.5	R				
734	19	3	2010	14	31	7.3	41.24	36.45	R	6	R					2.6	R				
735	19	3	2010	14	34	0.3	39.09	40.13	R	29	R					2.4	R				
736	19	3	2010	14	38	14.2	37.59	29.36	R	5	R					2.8	R				
737	19	3	2010	14	44	25.9	39.55	33.29	R	9	R					2.2	R				
738	19	3	2010	14	58	39.1	38.52	27.31	R	5	R					2.2	R				
739	19	3	2010	15	5	26.2	40.47	29.18	R	5	R					2.6	R				
740	19	3	2010	15	18	14.2	37.13	27.91	R	23	R					2.5	R				

TÜRKİYE DEPREM ETKİNLİĞİ (2010 YILI MART AYI)

No	Tarih - Date			Zaman - Time			Koordinat - Coordinate			Derinlik - Depth		Magnitüd - Magnitude										
	Gün	Ay	Yıl	Saat	Dak.	San.	Enlem-K	Boylam-D	Ref	Km.	Ref	Ms	Ref	Mb	Ref	Md	Ref	MI	Ref	Mw	Ref	
741	19	3	2010	15	25	3.3	41.49	35.44	R	12	R					2.3	R					
742	19	3	2010	15	34	38.5	38.67	35.74	R	5	R					3.1	R					
743	19	3	2010	15	43	53.6	37.09	38.81	R	7	R					3.1	R					
744	19	3	2010	15	47	19.0	37.17	28.15	R	4	R					2.6	R					
745	19	3	2010	15	54	41.2	39.95	35.37	R	9	R					2.6	R					
746	19	3	2010	15	56	14.2	38.73	35.85	R	6	R					2.9	R					
747	19	3	2010	18	50	13.7	36.58	28.46	R	6	R					3.0	R					
748	19	3	2010	19	28	38.8	38.47	31.91	R	11	R					2.5	R					
749	19	3	2010	19	51	56.4	40.81	28.85	R	6	R					2.1	R					
750	19	3	2010	20	24	14.6	37.72	30.01	R	13	R					2.7	R					
751	19	3	2010	21	13	56.2	38.90	39.00	R	5	R							4.1	R			
752	19	3	2010	21	26	30.4	40.34	41.00	R	7	R					2.7	R					
753	19	3	2010	21	27	46.8	39.76	30.29	R	15	R					2.6	R					
754	19	3	2010	21	29	34.9	39.18	39.43	R	24	R					2.3	R					
755	19	3	2010	21	43	9.0	39.98	39.78	R	16	R					2.8	R					
756	19	3	2010	21	45	25.6	38.77	38.98	R	11	R					2.6	R					
757	19	3	2010	23	2	14.0	38.02	35.23	R	7	R					2.7	R					
758	19	3	2010	23	3	2.1	38.86	40.25	R	6	R					2.8	R					
759	19	3	2010	23	30	9.6	39.71	42.62	R	8	R					2.9	R					
760	20	3	2010	0	24	17.5	35.10	31.53	R	10	R					3.4	R					

TÜRKİYE DEPREM ETKİNLİĞİ (2010 YILI MART AYI)

No	Tarih - Date			Zaman - Time			Koordinat - Coordinate			Derinlik - Depth		Magnitüd - Magnitude										
	Gün	Ay	Yıl	Saat	Dak.	San.	Enlem-K	Boylam-D	Ref	Km.	Ref	Ms	Ref	Mb	Ref	Md	Ref	MI	Ref	Mw	Ref	
761	20	3	2010	1	10	34.3	39.29	27.96	R	5	R					2.8	R					
762	20	3	2010	1	24	40.0	37.78	29.18	R	4	R					2.9	R					
763	20	3	2010	1	49	30.4	40.79	27.64	R	13	R					2.4	R					
764	20	3	2010	2	21	1.8	37.54	35.54	R	8	R					2.2	R					
765	20	3	2010	2	30	56.1	36.94	29.33	R	22	R					2.5	R					
766	20	3	2010	2	31	24.6	38.29	26.44	R	5	R					3.1	R					
767	20	3	2010	2	49	22.8	37.41	38.75	R	8	R					3.0	R					
768	20	3	2010	2	57	35.5	40.84	27.94	R	18	R					2.5	R					
769	20	3	2010	3	39	20.6	40.42	28.97	R	5	R					2.4	R					
770	20	3	2010	4	1	45.1	41.75	43.19	R	23	R					3.0	R					
771	20	3	2010	5	18	3.4	37.53	27.50	R	4	R					2.2	R					
772	20	3	2010	5	24	30.3	36.23	28.23	R	14	R					2.7	R					
773	20	3	2010	6	33	29.2	38.73	40.00	R	4	R					2.8	R					
774	20	3	2010	6	58	8.3	37.04	28.48	R	5	R					2.4	R					
775	20	3	2010	7	22	9.0	40.62	27.45	R	16	R					2.0	R					
776	20	3	2010	7	24	29.1	40.82	27.54	R	7	R					2.3	R					
777	20	3	2010	8	3	12.7	37.26	28.19	R	5	R					2.5	R					
778	20	3	2010	8	31	22.9	37.25	28.22	R	7	R					2.7	R					
779	20	3	2010	9	8	6.0	37.75	29.18	R	5	R					2.9	R					
780	20	3	2010	9	10	57.6	38.45	39.29	R	9	R					2.6	R					

TÜRKİYE DEPREM ETKİNLİĞİ (2010 YILI MART AYI)

No	Tarih - Date			Zaman - Time			Koordinat - Coordinate			Derinlik - Depth		Magnitüd - Magnitude										
	Gün	Ay	Yıl	Saat	Dak.	San.	Enlem-K	Boylam-D	Ref	Km.	Ref	Ms	Ref	Mb	Ref	Md	Ref	MI	Ref	Mw	Ref	
781	20	3	2010	9	30	17.5	39.98	27.05	R	10	R					2.6	R					
782	20	3	2010	9	50	49.1	37.03	27.93	R	28	R					2.5	R					
783	20	3	2010	10	6	21.7	37.19	27.89	R	17	R					2.4	R					
784	20	3	2010	10	6	50.8	40.19	30.02	R	8	R					2.6	R					
785	20	3	2010	10	25	26.0	37.23	28.15	R	5	R					2.7	R					
786	20	3	2010	10	27	7.9	38.76	40.02	R	7	R					2.6	R					
787	20	3	2010	10	44	32.9	37.60	35.38	R	5	R					2.4	R					
788	20	3	2010	11	3	20.2	37.63	36.49	R	4	R					2.5	R					
789	20	3	2010	11	22	49.2	38.75	40.03	R	5	R							3.5	R			
790	20	3	2010	11	23	37.3	39.01	29.84	R	5	R					2.5	R					
791	20	3	2010	11	29	27.8	40.11	24.02	R	15	R					3.4	R					
792	20	3	2010	11	42	24.0	39.04	29.30	R	11	R					2.5	R					
793	20	3	2010	11	48	18.1	41.22	36.26	R	18	R					2.4	R					
794	20	3	2010	12	11	3.2	39.62	35.46	R	7	R					2.9	R					
795	20	3	2010	12	27	26.5	39.15	27.65	R	6	R					2.9	R					
796	20	3	2010	12	44	45.2	40.50	29.25	R	5	R					2.7	R					
797	20	3	2010	12	51	41.6	38.66	32.05	R	16	R					2.5	R					
798	20	3	2010	13	11	32.2	38.11	27.30	R	6	R					2.6	R					
799	20	3	2010	13	40	7.0	37.44	28.16	R	28	R					2.6	R					
800	20	3	2010	13	42	24.4	40.30	29.95	R	5	R					2.3	R					

TÜRKİYE DEPREM ETKİNLİĞİ (2010 YILI MART AYI)

No	Tarih - Date			Zaman - Time			Koordinat - Coordinate			Derinlik - Depth		Magnitüd - Magnitude									
	Gün	Ay	Yıl	Saat	Dak.	San.	Enlem-K	Boylam-D	Ref	Km.	Ref	Ms	Ref	Mb	Ref	Md	Ref	MI	Ref	Mw	Ref
801	20	3	2010	13	47	3.0	39.48	36.64	R	5	R					2.8	R				
802	20	3	2010	13	49	20.6	39.58	29.72	R	19	R					2.5	R				
803	20	3	2010	13	51	13.8	37.04	27.99	R	5	R					2.4	R				
804	20	3	2010	13	54	54.0	37.17	28.22	R	25	R					2.6	R				
805	20	3	2010	13	59	15.9	39.91	39.78	R	8	R					2.7	R				
806	20	3	2010	14	47	35.0	38.73	26.48	R	10	R					3.2	R				
807	20	3	2010	15	50	20.7	37.22	28.18	R	2	R					2.6	R				
808	20	3	2010	15	55	13.9	37.24	28.21	R	2	R					2.7	R				
809	20	3	2010	16	26	15.7	40.42	42.25	R	5	R					3.8	R				
810	20	3	2010	17	1	39.4	38.44	39.36	R	5	R					2.8	R				
811	20	3	2010	17	12	27.3	39.65	42.56	R	7	R					2.7	R				
812	20	3	2010	17	16	27.5	39.12	29.07	R	5	R					2.5	R				
813	20	3	2010	17	38	14.9	37.04	29.03	R	3	R					2.7	R				
814	20	3	2010	17	49	6.6	38.59	44.27	R	5	R					3.0	R				
815	20	3	2010	18	26	28.5	38.47	39.32	R	2	R					2.8	R				
816	20	3	2010	18	29	32.8	38.60	30.38	R	12	R					2.6	R				
817	20	3	2010	18	33	35.6	36.91	28.47	R	17	R					2.6	R				
818	20	3	2010	19	20	52.4	39.15	40.15	R	10	R					2.6	R				
819	20	3	2010	19	21	56.0	39.13	26.14	R	12	R					3.1	R				
820	20	3	2010	20	24	49.0	39.54	23.44	N	12	N							4.0	T		

TÜRKİYE DEPREM ETKİNLİĞİ (2010 YILI MART AYI)

No	Tarih - Date			Zaman - Time			Koordinat - Coordinate			Derinlik - Depth		Magnitüd - Magnitude										
	Gün	Ay	Yıl	Saat	Dak.	San.	Enlem-K	Boylam-D	Ref	Km.	Ref	Ms	Ref	Mb	Ref	Md	Ref	MI	Ref	Mw	Ref	
821	20	3	2010	20	50	26.2	39.81	41.59	R	14	R					2.8	R					
822	20	3	2010	21	33	51.6	39.12	26.15	R	8	R					3.1	R					
823	20	3	2010	22	16	52.8	37.81	33.52	R	10	R					2.9	R					
824	20	3	2010	22	37	57.5	39.86	39.14	R	11	R					2.7	R					
825	20	3	2010	22	41	29.3	38.42	39.42	R	3	R					2.9	R					
826	20	3	2010	23	49	8.5	35.52	29.16	R	10	R					3.4	R					
827	20	3	2010	23	50	13.7	40.77	27.37	R	12	R					2.3	R					
828	20	3	2010	23	58	5.4	40.13	33.32	R	5	R					2.7	R					
829	21	3	2010	0	10	54.0	38.87	40.12	R	2	R					2.5	R					
830	21	3	2010	0	14	48.6	37.22	28.17	R	7	R					2.4	R					
831	21	3	2010	0	55	10.6	38.85	40.05	R	26	R					2.4	R					
832	21	3	2010	1	15	6.5	35.63	25.16	R	27	R					3.1	R					
833	21	3	2010	1	58	24.5	38.24	26.65	R	5	R					3.4	R					
834	21	3	2010	2	39	49.2	40.35	27.48	R	8	R					2.0	R					
835	21	3	2010	3	26	35.7	38.47	39.34	R	3	R					2.7	R					
836	21	3	2010	3	31	18.9	39.81	37.42	R	6	R					2.5	R					
837	21	3	2010	3	41	10.8	39.26	29.29	R	5	R					2.7	R					
838	21	3	2010	3	50	49.8	39.12	29.08	R	5	R					3.0	R					
839	21	3	2010	4	27	41.8	38.47	39.30	R	3	R					3.1	R					
840	21	3	2010	4	31	5.3	38.44	39.33	R	7	R					2.3	R					

TÜRKİYE DEPREM ETKİNLİĞİ (2010 YILI MART AYI)

No	Tarih - Date			Zaman - Time			Koordinat - Coordinate			Derinlik - Depth		Magnitüd - Magnitude										
	Gün	Ay	Yıl	Saat	Dak.	San.	Enlem-K	Boylam-D	Ref	Km.	Ref	Ms	Ref	Mb	Ref	Md	Ref	MI	Ref	Mw	Ref	
841	21	3	2010	5	13	24.6	38.48	39.30	R	5	R					3.0	R					
842	21	3	2010	5	17	42.4	38.21	26.64	R	9	R					2.7	R					
843	21	3	2010	5	57	49.4	39.26	29.52	R	28	R					2.2	R					
844	21	3	2010	6	17	13.2	38.94	40.02	R	11	R					2.5	R					
845	21	3	2010	6	28	31.6	36.17	28.88	R	10	R					2.7	R					
846	21	3	2010	6	37	14.2	38.76	38.90	R	5	R					2.7	R					
847	21	3	2010	7	10	4.5	37.50	36.50	R	8	R					3.1	R					
848	21	3	2010	7	11	38.5	39.24	29.29	R	7	R					3.0	R					
849	21	3	2010	7	26	2.7	38.47	39.35	R	6	R					2.9	R					
850	21	3	2010	8	9	16.4	38.63	39.99	R	4	R					2.5	R					
851	21	3	2010	8	22	26.2	40.33	29.98	R	7	R					2.1	R					
852	21	3	2010	8	31	22.6	38.24	26.63	R	14	R					2.7	R					
853	21	3	2010	8	51	41.8	40.77	34.98	R	13	R					2.9	R					
854	21	3	2010	9	19	59.5	37.44	38.65	R	5	R					3.2	R					
855	21	3	2010	9	27	57.0	38.88	40.08	R	16	R					2.6	R					
856	21	3	2010	9	39	1.6	37.06	30.81	R	80	R					3.1	R					
857	21	3	2010	9	55	24.6	37.19	28.31	R	21	R					2.7	R					
858	21	3	2010	10	16	25.2	37.60	32.10	R	5	R					2.6	R					
859	21	3	2010	10	20	28.7	39.44	27.88	R	28	R					2.6	R					
860	21	3	2010	10	42	41.7	39.87	26.35	R	4	R					2.5	R					

TÜRKİYE DEPREM ETKİNLİĞİ (2010 YILI MART AYI)

No	Tarih - Date			Zaman - Time			Koordinat - Coordinate			Derinlik - Depth		Magnitüd - Magnitude									
	Gün	Ay	Yıl	Saat	Dak.	San.	Enlem-K	Boylam-D	Ref	Km.	Ref	Ms	Ref	Mb	Ref	Md	Ref	MI	Ref	Mw	Ref
861	21	3	2010	11	30	9.8	36.86	30.35	R	6	R					3.8	R				
862	21	3	2010	11	35	2.1	36.82	30.32	R	17	R					2.6	R				
863	21	3	2010	11	39	11.2	36.85	30.34	R	5	R					2.2	R				
864	21	3	2010	11	41	57.6	38.22	42.99	R	10	R					3.1	R				
865	21	3	2010	11	47	55.1	38.32	42.71	R	8	R					2.7	R				
866	21	3	2010	11	52	35.7	38.88	39.03	R	5	R					2.6	R				
867	21	3	2010	11	57	10.8	36.79	39.18	R	5	R					3.1	R				
868	21	3	2010	12	3	24.5	38.86	39.05	R	10	R					3.0	R				
869	21	3	2010	12	7	17.1	36.88	30.30	R	5	R					2.3	R				
870	21	3	2010	12	8	23.7	36.87	30.33	R	5	R					2.5	R				
871	21	3	2010	12	11	30.3	36.83	30.33	R	8	R					3.0	R				
872	21	3	2010	12	29	59.9	36.80	30.35	R	25	R					2.5	R				
873	21	3	2010	12	38	50.7	38.88	27.88	R	3	R					2.5	R				
874	21	3	2010	12	48	13.0	36.89	30.34	R	5	R					3.2	R				
875	21	3	2010	12	49	36.1	39.24	39.41	R	2	R					2.6	R				
876	21	3	2010	12	54	15.8	39.31	27.93	R	6	R					3.0	R				
877	21	3	2010	12	54	32.6	36.86	30.34	R	5	R					3.1	R				
878	21	3	2010	13	53	44.6	38.60	28.64	R	5	R					2.6	R				
879	21	3	2010	14	13	30.7	37.35	28.28	R	5	R					2.6	R				
880	21	3	2010	14	18	14.2	38.77	40.07	R	2	R					2.9	R				

TÜRKİYE DEPREM ETKİNLİĞİ (2010 YILI MART AYI)

No	Tarih - Date			Zaman - Time			Koordinat - Coordinate			Derinlik - Depth		Magnitüd - Magnitude									
	Gün	Ay	Yıl	Saat	Dak.	San.	Enlem-K	Boylam-D	Ref	Km.	Ref	Ms	Ref	Mb	Ref	Md	Ref	MI	Ref	Mw	Ref
881	21	3	2010	14	36	5.2	37.35	26.85	R	5	R					2.6	R				
882	21	3	2010	15	15	48.0	38.76	26.55	R	8	R					3.0	R				
883	21	3	2010	15	27	26.8	36.96	27.72	R	5	R					2.3	R				
884	21	3	2010	15	38	38.8	36.97	39.29	R	5	R					3.0	R				
885	21	3	2010	15	47	23.2	37.27	28.22	R	3	R					2.7	R				
886	21	3	2010	15	50	24.9	38.70	26.49	R	19	R					2.5	R				
887	21	3	2010	15	54	37.8	38.64	38.15	R	5	R					2.8	R				
888	21	3	2010	15	57	21.6	40.93	35.98	R	25	R					2.6	R				
889	21	3	2010	16	14	20.4	36.99	27.76	R	2	R					2.3	R				
890	21	3	2010	16	30	11.2	38.71	43.81	R	5	R					3.0	R				
891	21	3	2010	17	36	15.2	36.83	30.35	R	27	R					2.7	R				
892	21	3	2010	18	0	24.1	38.81	31.93	R	5	R							3.6	R		
893	21	3	2010	18	7	47.2	38.78	31.89	R	19	R					2.4	R				
894	21	3	2010	19	30	12.5	36.84	30.33	R	7	R					2.8	R				
895	21	3	2010	19	49	23.2	36.12	28.93	R	5	R					2.9	R				
896	21	3	2010	19	51	40.1	39.20	26.18	R	10	R					2.8	R				
897	21	3	2010	20	54	47.0	36.84	30.33	R	2	R					2.8	R				
898	21	3	2010	21	2	13.0	36.83	30.32	R	8	R					2.7	R				
899	21	3	2010	21	9	50.3	36.83	34.30	R	8	R					2.5	R				
900	21	3	2010	21	40	27.4	38.90	27.86	R	7	R					2.7	R				

TÜRKİYE DEPREM ETKİNLİĞİ (2010 YILI MART AYI)

No	Tarih - Date			Zaman - Time			Koordinat - Coordinate			Derinlik - Depth		Magnitüd - Magnitude										
	Gün	Ay	Yıl	Saat	Dak.	San.	Enlem-K	Boylam-D	Ref	Km.	Ref	Ms	Ref	Mb	Ref	Md	Ref	MI	Ref	Mw	Ref	
901	21	3	2010	22	34	5.5	38.77	39.98	R	6	R					2.7	R					
902	21	3	2010	23	17	56.7	37.01	28.40	R	9	R					2.9	R					
903	21	3	2010	23	27	12.0	38.93	40.14	R	3	R					2.8	R					
904	22	3	2010	0	31	34.8	38.86	39.02	R	8	R					2.5	R					
905	22	3	2010	1	2	59.8	36.82	30.35	R	28	R					2.8	R					
906	22	3	2010	1	13	8.1	37.75	30.97	R	10	R					2.6	R					
907	22	3	2010	1	24	28.3	35.69	28.33	R	8	R					3.4	R					
908	22	3	2010	1	25	3.0	38.86	40.19	R	3	R					3.0	R					
909	22	3	2010	1	32	10.8	40.75	35.20	R	3	R							3.5	R			
910	22	3	2010	1	41	53.0	38.23	26.63	R	7	R					2.7	R					
911	22	3	2010	1	42	59.3	40.12	31.65	R	12	R					2.8	R					
912	22	3	2010	1	48	56.0	37.15	28.24	R	9	R					2.5	R					
913	22	3	2010	3	7	33.4	40.64	27.32	R	12	R					2.1	R					
914	22	3	2010	3	11	15.2	38.89	39.11	R	25	R					2.5	R					
915	22	3	2010	3	33	58.2	35.12	27.70	R	6	R					3.4	R					
916	22	3	2010	3	55	44.9	38.49	26.71	R	15	R					2.7	R					
917	22	3	2010	4	48	33.2	37.90	29.23	R	5	R					2.7	R					
918	22	3	2010	5	6	4.9	37.22	27.59	R	20	R					2.3	R					
919	22	3	2010	5	55	8.5	38.28	26.63	R	16	R					2.4	R					
920	22	3	2010	6	31	55.2	38.86	40.11	R	3	R					3.2	R					

TÜRKİYE DEPREM ETKİNLİĞİ (2010 YILI MART AYI)

No	Tarih - Date			Zaman - Time			Koordinat - Coordinate			Derinlik - Depth		Magnitüd - Magnitude									
	Gün	Ay	Yıl	Saat	Dak.	San.	Enlem-K	Boylam-D	Ref	Km.	Ref	Ms	Ref	Mb	Ref	Md	Ref	MI	Ref	Mw	Ref
921	22	3	2010	6	50	20.6	39.02	40.48	R	20	R					2.7	R				
922	22	3	2010	7	6	53.8	37.17	28.04	R	5	R					2.6	R				
923	22	3	2010	7	30	23.6	37.09	28.04	R	9	R					2.8	R				
924	22	3	2010	7	57	11.8	37.28	28.18	R	5	R					2.8	R				
925	22	3	2010	8	54	16.5	38.66	39.90	R	24	R					2.6	R				
926	22	3	2010	9	22	41.1	39.36	38.54	R	20	R					2.6	R				
927	22	3	2010	9	32	43.4	36.97	27.71	R	13	R					2.6	R				
928	22	3	2010	9	46	10.2	37.10	28.11	R	6	R					2.6	R				
929	22	3	2010	9	54	3.2	37.28	28.23	R	5	R					2.6	R				
930	22	3	2010	10	1	52.6	39.28	27.78	R	18	R					2.6	R				
931	22	3	2010	10	45	4.4	38.42	27.31	R	10	R					2.2	R				
932	22	3	2010	11	57	2.7	42.92	28.65	R	4	R					3.2	R				
933	22	3	2010	12	36	29.4	36.99	28.96	R	24	R					2.4	R				
934	22	3	2010	13	45	9.9	38.58	39.59	R	9	R					3.0	R				
935	22	3	2010	14	1	32.8	39.97	33.57	R	7	R					2.8	R				
936	22	3	2010	14	14	37.4	37.19	28.17	R	9	R					2.6	R				
937	22	3	2010	14	23	17.4	39.91	29.90	R	8	R					2.8	R				
938	22	3	2010	14	40	39.5	39.40	38.53	R	28	R					2.6	R				
939	22	3	2010	14	45	2.6	37.16	27.90	R	8	R					2.3	R				
940	22	3	2010	15	8	44.6	37.27	28.21	R	9	R					2.6	R				

TÜRKİYE DEPREM ETKİNLİĞİ (2010 YILI MART AYI)

No	Tarih - Date			Zaman - Time			Koordinat - Coordinate			Derinlik - Depth		Magnitüd - Magnitude										
	Gün	Ay	Yıl	Saat	Dak.	San.	Enlem-K	Boylam-D	Ref	Km.	Ref	Ms	Ref	Mb	Ref	Md	Ref	MI	Ref	Mw	Ref	
941	22	3	2010	15	36	31.4	38.21	33.10	R	5	R					2.3	R					
942	22	3	2010	15	47	23.8	40.65	30.28	R	5	R					2.3	R					
943	22	3	2010	16	31	25.2	38.86	39.04	R	8	R					2.4	R					
944	22	3	2010	17	2	27.2	38.81	40.29	R	9	R					2.7	R					
945	22	3	2010	17	37	3.1	40.60	42.70	R	17	R					2.5	R					
946	22	3	2010	18	10	47.7	38.23	42.54	R	4	R						2.6	R				
947	22	3	2010	18	51	30.8	37.30	40.61	R	28	R					3.2	R					
948	22	3	2010	18	51	49.0	38.16	42.34	R	5	R					2.8	R					
949	22	3	2010	20	25	2.2	39.99	39.99	R	16	R						2.8	R				
950	22	3	2010	20	59	21.1	38.27	32.65	R	9	R					2.1	R					
951	22	3	2010	22	14	39.5	38.61	43.53	R	18	R						2.0	R				
952	22	3	2010	23	29	29.8	37.03	35.54	R	4	R					1.8	R					
953	23	3	2010	0	18	50.4	36.86	29.21	R	19	R						1.5	R				
954	23	3	2010	0	19	59.0	39.04	37.79	R	26	R					2.4	R					
955	23	3	2010	0	41	22.8	36.87	26.91	R	26	R					2.6	R					
956	23	3	2010	2	57	26.5	38.43	39.23	R	2	R						3.2	R				
957	23	3	2010	4	18	57.4	39.12	39.36	R	5	R					2.8	R					
958	23	3	2010	5	12	19.1	38.75	40.12	R	6	R					2.7	R					
959	23	3	2010	5	12	36.7	38.49	26.50	R	13	R					2.8	R					
960	23	3	2010	5	46	3.0	35.79	28.98	R	10	R					2.9	R					

TÜRKİYE DEPREM ETKİNLİĞİ (2010 YILI MART AYI)

No	Tarih - Date			Zaman - Time			Koordinat - Coordinate			Derinlik - Depth		Magnitüd - Magnitude									
	Gün	Ay	Yıl	Saat	Dak.	San.	Enlem-K	Boylam-D	Ref	Km.	Ref	Ms	Ref	Mb	Ref	Md	Ref	MI	Ref	Mw	Ref
961	23	3	2010	7	15	41.6	37.10	28.19	R	3	R					2.4	R				
962	23	3	2010	7	59	28.2	40.04	33.95	R	2	R					3.5	R				
963	23	3	2010	8	9	32.6	39.72	42.68	R	5	R							3.4	R		
964	23	3	2010	8	10	30.0	39.98	33.94	R	6	R					2.9	R				
965	23	3	2010	8	25	2.6	39.65	27.57	R	13	R					2.8	R				
966	23	3	2010	9	5	6.0	37.12	37.26	R	4	R					2.7	R				
967	23	3	2010	9	8	13.9	36.93	39.25	R	5	R					2.9	R				
968	23	3	2010	9	16	18.4	39.34	27.76	R	9	R					2.5	R				
969	23	3	2010	9	16	35.7	37.17	28.07	R	5	R					2.6	R				
970	23	3	2010	9	27	1.7	37.01	26.97	R	8	R					2.9	R				
971	23	3	2010	9	53	48.5	37.10	37.11	R	2	R					2.8	R				
972	23	3	2010	10	59	28.4	38.85	40.18	R	6	R					3.3	R	3.2	R		
973	23	3	2010	11	3	5.1	39.36	25.77	R	5	R					3.3	R	3.0	R		
974	23	3	2010	11	11	0.5	40.27	38.06	R	5	R					2.8	R				
975	23	3	2010	11	27	45.5	38.20	36.29	R	8	R					2.8	R				
976	23	3	2010	12	12	11.1	37.51	38.88	R	20	R					2.7	R				
977	23	3	2010	12	35	37.1	39.46	31.45	R	6	R					2.9	R				
978	23	3	2010	13	15	4.9	39.23	27.71	R	9	R					2.6	R				
979	23	3	2010	13	49	25.7	37.23	28.33	R	15	R					2.6	R				
980	23	3	2010	14	7	20.5	37.58	41.48	R	12	R					3.0	R				

TÜRKİYE DEPREM ETKİNLİĞİ (2010 YILI MART AYI)

No	Tarih - Date			Zaman - Time			Koordinat - Coordinate			Derinlik - Depth		Magnitüd - Magnitude									
	Gün	Ay	Yıl	Saat	Dak.	San.	Enlem-K	Boylam-D	Ref	Km.	Ref	Ms	Ref	Mb	Ref	Md	Ref	MI	Ref	Mw	Ref
981	23	3	2010	14	18	29.2	39.83	42.73	R	3	R					2.9	R				
982	23	3	2010	14	30	16.4	37.60	26.89	R	5	R					2.9	R				
983	23	3	2010	14	30	36.5	37.21	28.20	R	10	R					2.7	R				
984	23	3	2010	15	5	41.7	39.59	42.59	R	8	R					2.6	R				
985	23	3	2010	15	17	0.8	37.40	35.46	R	8	R					2.5	R				
986	23	3	2010	15	33	48.7	40.81	39.71	R	9	R					2.2	R				
987	23	3	2010	15	38	7.1	37.10	28.03	R	5	R					2.8	R				
988	23	3	2010	15	42	55.9	37.21	28.18	R	5	R					2.5	R				
989	23	3	2010	17	31	52.1	39.73	42.67	R	5	R					3.0	R				
990	23	3	2010	18	30	33.9	40.08	43.17	R	8	R					2.7	R				
991	23	3	2010	19	2	24.4	35.85	29.24	R	4	R					3.1	R				
992	23	3	2010	19	22	47.7	36.66	36.27	R	5	R					3.0	R				
993	23	3	2010	19	33	14.2	39.97	38.64	R	5	R							4.2	R		
994	23	3	2010	22	56	16.1	41.85	26.52	R	7	R					2.9	R				
995	23	3	2010	23	8	31.0	37.50	36.21	R	5	R					2.4	R				
996	23	3	2010	23	29	48.8	39.69	42.68	R	5	R					2.9	R				
997	23	3	2010	23	31	35.5	39.00	29.73	R	5	R					2.9	R				
998	23	3	2010	23	32	29.9	42.16	26.68	R	24	R					3.1	R				
999	23	3	2010	23	58	7.6	36.03	32.06	R	6	R					3.4	R				
1000	24	3	2010	0	22	24.8	36.81	30.35	R	2	R					2.7	R				

TÜRKİYE DEPREM ETKİNLİĞİ (2010 YILI MART AYI)

No	Tarih - Date			Zaman - Time			Koordinat - Coordinate			Derinlik - Depth		Magnitüd - Magnitude									
	Gün	Ay	Yıl	Saat	Dak.	San.	Enlem-K	Boylam-D	Ref	Km.	Ref	Ms	Ref	Mb	Ref	Md	Ref	MI	Ref	Mw	Ref
1001	24	3	2010	0	37	52.2	39.79	26.84	R	6	R					3.1	R				
1002	24	3	2010	1	13	37.8	38.45	39.34	R	2	R					3.0	R				
1003	24	3	2010	1	14	20.1	37.29	27.90	R	9	R					2.6	R				
1004	24	3	2010	3	33	3.7	39.73	42.65	R	5	R					3.1	R				
1005	24	3	2010	3	34	49.0	37.05	35.99	R	7	R					3.3	R				
1006	24	3	2010	3	49	3.9	39.68	42.66	R	5	R					2.9	R				
1007	24	3	2010	4	39	30.1	39.34	25.99	R	5	R					2.8	R				
1008	24	3	2010	7	14	56.2	37.21	28.23	R	9	R					2.8	R				
1009	24	3	2010	8	8	0.0	38.48	27.37	R	3	R					2.1	R				
1010	24	3	2010	8	52	32.4	39.78	42.76	R	8	R					2.9	R				
1011	24	3	2010	9	23	40.0	39.60	27.49	R	2	R					3.0	R				
1012	24	3	2010	10	3	39.3	39.22	28.15	R	9	R					2.5	R				
1013	24	3	2010	10	13	39.3	37.19	27.89	R	7	R					2.4	R				
1014	24	3	2010	10	26	46.3	40.32	27.85	R	6	R					2.5	R				
1015	24	3	2010	10	54	11.8	39.82	33.01	R	7	R					2.7	R				
1016	24	3	2010	10	54	51.0	38.88	35.95	R	6	R					2.8	R				
1017	24	3	2010	11	10	28.0	37.12	27.89	R	7	R					2.5	R				
1018	24	3	2010	12	14	39.3	39.37	38.56	R	21	R					2.6	R				
1019	24	3	2010	13	33	37.5	41.66	35.49	R	9	R					2.8	R				
1020	24	3	2010	13	46	35.4	39.64	30.71	R	20	R					2.7	R				

TÜRKİYE DEPREM ETKİNLİĞİ (2010 YILI MART AYI)

No	Tarih - Date			Zaman - Time			Koordinat - Coordinate			Derinlik - Depth		Magnitüd - Magnitude									
	Gün	Ay	Yıl	Saat	Dak.	San.	Enlem-K	Boylam-D	Ref	Km.	Ref	Ms	Ref	Mb	Ref	Md	Ref	MI	Ref	Mw	Ref
1021	24	3	2010	14	11	30.4	38.78	40.11	R	5	R			5.1	N			5.1	R		
1022	24	3	2010	14	20	17.1	37.28	28.17	R	8	R					2.6	R				
1023	24	3	2010	14	37	36.8	38.13	26.77	R	10	R					3.0	R				
1024	24	3	2010	15	5	15.6	38.78	40.03	R	11	R					2.7	R				
1025	24	3	2010	15	13	48.7	38.00	27.15	R	9	R					2.5	R				
1026	24	3	2010	15	48	55.2	38.72	38.08	R	28	R							2.5	R		
1027	24	3	2010	15	56	43.6	38.17	42.61	R	12	R					2.6	R				
1028	24	3	2010	16	5	11.3	37.16	28.11	R	5	R					2.5	R				
1029	24	3	2010	16	17	31.7	39.70	25.59	R	5	R							3.1	R		
1030	24	3	2010	16	33	44.8	38.65	39.98	R	9	R							2.7	R		
1031	24	3	2010	16	56	42.7	36.73	36.47	R	13	R					2.7	R				
1032	24	3	2010	17	25	47.1	36.91	30.34	R	8	R					2.5	R				
1033	24	3	2010	17	52	38.6	36.73	36.37	R	8	R					2.9	R				
1034	24	3	2010	18	9	41.0	39.91	38.71	R	11	R					2.8	R				
1035	24	3	2010	19	49	53.8	40.02	42.02	R	5	R					2.4	R				
1036	24	3	2010	19	51	8.9	36.97	29.40	R	2	R					2.2	R				
1037	24	3	2010	21	1	45.6	35.32	26.75	R	32	R					3.2	R				
1038	24	3	2010	21	3	35.2	37.52	38.55	R	6	R					2.7	R				
1039	24	3	2010	23	40	4.3	38.83	40.12	R	11	R					2.7	R				
1040	25	3	2010	0	18	24.8	38.11	27.36	R	6	R					2.0	R				

TÜRKİYE DEPREM ETKİNLİĞİ (2010 YILI MART AYI)

No	Tarih - Date			Zaman - Time			Koordinat - Coordinate			Derinlik - Depth		Magnitüd - Magnitude									
	Gün	Ay	Yıl	Saat	Dak.	San.	Enlem-K	Boylam-D	Ref	Km.	Ref	Ms	Ref	Mb	Ref	Md	Ref	MI	Ref	Mw	Ref
1041	25	3	2010	0	39	54.1	37.99	27.30	R	5	R							2.9	R		
1042	25	3	2010	2	27	7.6	36.65	45.40	R	5	R					3.1	R				
1043	25	3	2010	2	39	5.2	39.37	33.15	R	5	R					2.1	R				
1044	25	3	2010	2	47	22.5	38.83	40.11	R	6	R					2.7	R				
1045	25	3	2010	4	12	40.5	35.17	27.67	R	5	R					3.2	R				
1046	25	3	2010	6	11	12.8	37.25	28.19	R	8	R					2.7	R				
1047	25	3	2010	6	42	28.5	37.18	28.08	R	22	R					2.7	R				
1048	25	3	2010	6	49	57.0	37.22	28.16	R	5	R					2.6	R				
1049	25	3	2010	7	53	29.6	40.35	37.62	R	9	R					3.0	R				
1050	25	3	2010	8	2	48.7	38.86	40.12	R	4	R					2.7	R				
1051	25	3	2010	9	50	29.2	36.74	34.72	R	6	R					2.4	R				
1052	25	3	2010	10	10	37.2	39.38	38.55	R	24	R					3.0	R				
1053	25	3	2010	10	29	58.5	38.81	40.10	R	5	R					3.1	R				
1054	25	3	2010	10	34	13.9	39.39	28.07	R	8	R					2.8	R				
1055	25	3	2010	10	46	18.6	37.78	37.79	R	13	R					2.7	R				
1056	25	3	2010	11	45	12.8	38.79	40.03	R	10	R					2.8	R				
1057	25	3	2010	12	10	4.2	39.69	42.64	R	5	R					3.3	R				
1058	25	3	2010	12	20	18.2	37.71	30.84	R	13	R					3.0	R				
1059	25	3	2010	12	25	50.5	37.68	30.87	R	12	R					3.0	R				
1060	25	3	2010	13	31	5.4	37.28	28.18	R	7	R					2.6	R				

TÜRKİYE DEPREM ETKİNLİĞİ (2010 YILI MART AYI)

No	Tarih - Date			Zaman - Time			Koordinat - Coordinate			Derinlik - Depth		Magnitüd - Magnitude									
	Gün	Ay	Yıl	Saat	Dak.	San.	Enlem-K	Boylam-D	Ref	Km.	Ref	Ms	Ref	Mb	Ref	Md	Ref	MI	Ref	Mw	Ref
1061	25	3	2010	13	48	20.9	38.46	39.32	R	2	R					2.8	R				
1062	25	3	2010	14	4	24.6	37.19	28.19	R	10	R					2.5	R				
1063	25	3	2010	14	40	53.9	38.45	39.28	R	8	R					2.9	R				
1064	25	3	2010	14	56	56.3	37.49	38.99	R	12	R					2.9	R				
1065	25	3	2010	15	17	31.2	39.24	28.73	R	10	R					2.8	R				
1066	25	3	2010	15	47	14.3	37.22	28.20	R	5	R					2.7	R				
1067	25	3	2010	15	50	15.9	38.41	38.17	R	18	R					2.8	R				
1068	25	3	2010	16	26	3.7	38.83	40.11	R	8	R					2.7	R				
1069	25	3	2010	17	1	17.7	40.54	29.54	R	6	R					2.8	R				
1070	25	3	2010	17	19	16.1	37.72	27.68	R	2	R					2.7	R				
1071	25	3	2010	21	11	43.8	38.58	30.35	R	2	R					3.6	R				
1072	26	3	2010	3	39	52.8	38.77	40.13	R	6	R					2.8	R				
1073	26	3	2010	5	54	10.5	38.79	40.08	R	5	R					2.8	R				
1074	26	3	2010	7	21	52.8	37.25	28.19	R	4	R					2.8	R				
1075	26	3	2010	7	33	28.0	38.77	40.10	R	5	R					2.6	R				
1076	26	3	2010	8	48	15.3	38.89	39.09	R	12	R					2.7	R				
1077	26	3	2010	9	13	59.8	37.28	27.87	R	5	R					2.6	R				
1078	26	3	2010	9	35	6.0	36.44	28.39	R	27	R					2.7	R				
1079	26	3	2010	9	59	53.5	37.22	28.22	R	20	R					2.6	R				
1080	26	3	2010	10	8	25.8	39.31	38.52	R	27	R					2.9	R				

TÜRKİYE DEPREM ETKİNLİĞİ (2010 YILI MART AYI)

No	Tarih - Date			Zaman - Time			Koordinat - Coordinate			Derinlik - Depth		Magnitüd - Magnitude										
	Gün	Ay	Yıl	Saat	Dak.	San.	Enlem-K	Boylam-D	Ref	Km.	Ref	Ms	Ref	Mb	Ref	Md	Ref	MI	Ref	Mw	Ref	
1081	26	3	2010	10	15	1.5	38.83	40.18	R	14	R					2.6	R					
1082	26	3	2010	11	0	3.4	37.05	29.07	R	7	R					2.6	R					
1083	26	3	2010	11	23	40.6	38.43	40.50	R	8	R					2.7	R					
1084	26	3	2010	11	47	58.6	38.55	39.84	R	20	R					2.5	R					
1085	26	3	2010	12	5	52.6	35.29	33.27	R	5	R					2.6	R					
1086	26	3	2010	12	28	8.2	40.63	26.52	R	14	R					2.1	R					
1087	26	3	2010	13	7	9.3	40.81	34.39	R	24	R					2.7	R					
1088	26	3	2010	13	9	53.7	39.55	31.23	R	9	R					2.7	R					
1089	26	3	2010	13	28	38.6	38.85	39.00	R	9	R					2.9	R					
1090	26	3	2010	13	32	52.2	37.21	28.20	R	4	R					2.6	R					
1091	26	3	2010	13	41	56.8	37.25	28.15	R	10	R					2.5	R					
1092	26	3	2010	14	4	10.8	39.67	32.63	R	11	R					2.5	R					
1093	26	3	2010	14	24	51.2	37.40	38.97	R	5	R					2.7	R					
1094	26	3	2010	14	39	31.6	40.68	29.17	R	2	R					2.8	R	2.8	R			
1095	26	3	2010	14	43	19.0	39.24	29.18	R	8	R					2.4	R					
1096	26	3	2010	14	52	55.0	37.17	28.13	R	5	R					2.7	R					
1097	26	3	2010	15	6	52.0	40.16	28.81	R	5	R					2.7	R					
1098	26	3	2010	15	18	18.8	40.24	29.95	R	6	R					2.5	R					
1099	26	3	2010	15	55	3.7	37.25	28.30	R	10	R					2.6	R					
1100	26	3	2010	16	35	23.3	38.68	40.19	R	5	R					2.4	R					

TÜRKİYE DEPREM ETKİNLİĞİ (2010 YILI MART AYI)

No	Tarih - Date			Zaman - Time			Koordinat - Coordinate			Derinlik - Depth		Magnitüd - Magnitude										
	Gün	Ay	Yıl	Saat	Dak.	San.	Enlem-K	Boylam-D	Ref	Km.	Ref	Ms	Ref	Mb	Ref	Md	Ref	MI	Ref	Mw	Ref	
1101	26	3	2010	18	35	53.0	38.15	26.22	R	11	R			4.9	N			4.7	R			
1102	26	3	2010	18	52	20.5	38.24	26.23	R	15	R					2.9	R					
1103	26	3	2010	19	3	43.1	39.36	27.03	R	5	R					2.8	R					
1104	26	3	2010	19	15	26.9	38.16	26.21	R	5	R							3.5	R			
1105	26	3	2010	19	25	35.8	38.15	26.31	N	1	N			4.2	N			4.2	R			
1106	26	3	2010	19	29	9.5	38.15	26.19	R	10	R					2.6	R					
1107	26	3	2010	19	43	36.7	38.14	26.20	R	5	R					2.6	R					
1108	26	3	2010	20	25	24.5	38.03	26.41	R	24	R					2.4	R					
1109	26	3	2010	20	34	36.1	38.12	26.06	R	2	R							3.7	R			
1110	26	3	2010	21	2	27.5	38.18	26.25	R	22	R					2.6	R					
1111	26	3	2010	21	17	4.0	38.82	40.19	R	12	R					2.5	R					
1112	26	3	2010	21	44	50.7	38.45	42.97	R	6	R					2.4	R					
1113	26	3	2010	22	26	23.2	38.02	28.60	R	8	R					2.5	R					
1114	26	3	2010	23	17	2.3	38.83	40.15	R	5	R					2.8	R					
1115	26	3	2010	23	46	52.2	37.09	28.77	R	5	R					2.9	R					
1116	27	3	2010	0	26	5.9	38.53	26.21	R	18	R					2.6	R					
1117	27	3	2010	0	43	58.2	38.04	26.14	R	14	R					2.7	R					
1118	27	3	2010	1	10	42.1	38.15	26.17	R	7	R					2.6	R					
1119	27	3	2010	1	20	29.7	38.04	26.16	R	8	R					3.0	R					
1120	27	3	2010	1	41	0.9	38.24	26.25	R	10	R					2.7	R					

TÜRKİYE DEPREM ETKİNLİĞİ (2010 YILI MART AYI)

No	Tarih - Date			Zaman - Time			Koordinat - Coordinate			Derinlik - Depth		Magnitüd - Magnitude									
	Gün	Ay	Yıl	Saat	Dak.	San.	Enlem-K	Boylam-D	Ref	Km.	Ref	Ms	Ref	Mb	Ref	Md	Ref	MI	Ref	Mw	Ref
1121	27	3	2010	2	28	52.7	38.17	26.21	R	8	R					2.9	R				
1122	27	3	2010	3	5	24.7	38.36	26.30	R	8	R					2.9	R				
1123	27	3	2010	3	26	0.8	39.12	29.22	R	12	R					2.7	R				
1124	27	3	2010	6	13	13.6	38.90	42.29	R	9	R					3.1	R				
1125	27	3	2010	8	8	49.9	38.33	26.28	R	14	R					2.6	R				
1126	27	3	2010	8	15	7.9	36.45	28.39	R	21	R					2.7	R				
1127	27	3	2010	8	50	18.6	40.75	34.90	R	8	R					2.5	R				
1128	27	3	2010	9	38	43.7	38.83	40.14	R	12	R					2.6	R				
1129	27	3	2010	9	41	40.1	37.24	28.16	R	7	R					2.8	R				
1130	27	3	2010	9	43	37.8	35.96	31.84	R	6	R					3.2	R				
1131	27	3	2010	9	50	11.3	37.19	28.06	R	20	R							2.5	R		
1132	27	3	2010	9	52	17.3	37.26	28.34	R	15	R							2.5	R		
1133	27	3	2010	10	0	13.7	38.19	26.25	R	6	R					2.6	R				
1134	27	3	2010	10	10	13.1	38.12	26.21	R	5	R					2.7	R				
1135	27	3	2010	10	40	40.5	39.31	27.77	R	10	R					2.5	R				
1136	27	3	2010	11	59	32.9	35.02	26.89	R	13	R					3.7	R				
1137	27	3	2010	12	22	50.8	37.69	34.87	R	5	R					2.5	R				
1138	27	3	2010	12	28	18.3	40.95	30.42	R	20	R					2.4	R				
1139	27	3	2010	12	40	9.6	37.33	28.20	R	21	R					2.6	R				
1140	27	3	2010	13	26	2.8	35.36	27.26	R	11	R					3.5	R				

TÜRKİYE DEPREM ETKİNLİĞİ (2010 YILI MART AYI)

No	Tarih - Date			Zaman - Time			Koordinat - Coordinate			Derinlik - Depth		Magnitüd - Magnitude									
	Gün	Ay	Yıl	Saat	Dak.	San.	Enlem-K	Boylam-D	Ref	Km.	Ref	Ms	Ref	Mb	Ref	Md	Ref	MI	Ref	Mw	Ref
1141	27	3	2010	13	37	27.6	39.59	33.28	R	5	R					2.8	R				
1142	27	3	2010	14	29	10.0	39.46	36.57	R	5	R					3.0	R				
1143	27	3	2010	14	45	23.4	40.37	30.11	R	10	R					2.1	R				
1144	27	3	2010	14	45	45.4	40.61	27.59	R	5	R					2.6	R				
1145	27	3	2010	15	51	5.2	38.01	38.13	R	26	R					2.4	R				
1146	27	3	2010	15	57	23.7	40.28	27.83	R	2	R					2.6	R				
1147	27	3	2010	17	32	21.9	39.15	28.22	R	20	R					2.4	R				
1148	27	3	2010	18	58	5.8	37.58	29.95	R	3	R					2.3	R				
1149	27	3	2010	19	27	15.3	38.41	26.30	R	7	R					2.5	R				
1150	27	3	2010	20	3	40.1	37.51	29.98	R	6	R					2.8	R				
1151	27	3	2010	20	11	0.6	39.22	27.95	R	11	R					2.7	R				
1152	27	3	2010	22	5	58.7	35.76	27.19	R	24	R							3.1	R		
1153	27	3	2010	22	10	0.6	40.53	27.17	R	17	R					2.7	R				
1154	27	3	2010	22	12	23.7	40.18	42.07	R	17	R					2.6	R				
1155	27	3	2010	22	40	22.9	35.60	27.07	R	18	R					3.4	R				
1156	27	3	2010	22	45	47.4	38.24	26.25	R	9	R					3.1	R				
1157	27	3	2010	23	34	56.4	35.05	27.23	R	9	R							3.9	R		
1158	28	3	2010	0	11	58.1	38.88	27.86	R	6	R					2.8	R				
1159	28	3	2010	0	32	6.8	38.83	40.14	R	8	R					2.8	R				
1160	28	3	2010	1	7	1.4	38.85	40.27	R	5	R					3.0	R				

TÜRKİYE DEPREM ETKİNLİĞİ (2010 YILI MART AYI)

No	Tarih - Date			Zaman - Time			Koordinat - Coordinate			Derinlik - Depth		Magnitüd - Magnitude									
	Gün	Ay	Yıl	Saat	Dak.	San.	Enlem-K	Boylam-D	Ref	Km.	Ref	Ms	Ref	Mb	Ref	Md	Ref	MI	Ref	Mw	Ref
1161	28	3	2010	1	59	11.0	38.14	26.22	R	5	R					3.1	R				
1162	28	3	2010	2	24	20.0	38.85	40.30	R	4	R					3.0	R				
1163	28	3	2010	3	21	37.2	38.49	30.28	R	12	R					2.6	R				
1164	28	3	2010	4	11	37.7	38.83	40.12	R	6	R					2.9	R				
1165	28	3	2010	4	36	24.3	38.16	26.76	R	8	R					3.0	R				
1166	28	3	2010	4	39	41.2	38.19	26.20	R	5	R					2.8	R				
1167	28	3	2010	6	5	50.3	38.83	40.11	R	16	R					2.7	R				
1168	28	3	2010	6	39	5.3	38.76	40.05	R	3	R					2.9	R				
1169	28	3	2010	7	28	14.8	38.13	26.18	R	7	R					2.8	R				
1170	28	3	2010	7	29	18.0	37.18	28.12	R	5	R					2.7	R				
1171	28	3	2010	7	49	27.2	38.73	32.89	R	11	R					2.9	R				
1172	28	3	2010	9	6	39.3	37.93	27.19	R	5	R							3.0	R		
1173	28	3	2010	9	19	22.9	37.16	28.16	R	12	R					2.7	R				
1174	28	3	2010	9	26	15.3	35.42	27.26	R	11	R							3.0	R		
1175	28	3	2010	10	37	43.7	41.84	34.17	R	9	R					2.9	R				
1176	28	3	2010	11	36	29.8	36.70	36.76	R	12	R					2.7	R				
1177	28	3	2010	11	56	41.0	38.17	26.22	R	5	R					2.9	R				
1178	28	3	2010	12	18	32.4	40.14	36.45	R	9	R					2.8	R				
1179	28	3	2010	13	11	10.0	37.32	28.32	R	18	R					2.7	R				
1180	28	3	2010	14	20	19.4	38.22	30.60	R	8	R					2.8	R				

TÜRKİYE DEPREM ETKİNLİĞİ (2010 YILI MART AYI)

No	Tarih - Date			Zaman - Time			Koordinat - Coordinate			Derinlik - Depth		Magnitüd - Magnitude										
	Gün	Ay	Yıl	Saat	Dak.	San.	Enlem-K	Boylam-D	Ref	Km.	Ref	Ms	Ref	Mb	Ref	Md	Ref	MI	Ref	Mw	Ref	
1181	28	3	2010	16	26	3.2	37.15	38.92	R	7	R					3.1	R					
1182	28	3	2010	17	38	53.2	38.43	26.25	R	24	R					2.7	R					
1183	28	3	2010	18	40	44.5	37.81	43.73	R	6	R					2.7	R					
1184	28	3	2010	21	18	26.3	38.21	26.49	R	6	R					2.3	R					
1185	28	3	2010	22	9	8.2	38.82	40.13	R	8	R					2.8	R					
1186	28	3	2010	22	23	37.5	37.99	38.29	R	14	R					2.3	R					
1187	28	3	2010	23	1	19.7	39.00	26.71	R	5	R					2.6	R					
1188	28	3	2010	23	41	36.8	38.82	40.13	R	9	R					2.8	R					
1189	28	3	2010	23	57	50.1	38.83	40.13	R	5	R					2.6	R					
1190	29	3	2010	0	4	41.5	38.20	26.20	R	2	R					2.8	R					
1191	29	3	2010	1	1	1.8	38.37	26.33	R	5	R					2.8	R					
1192	29	3	2010	1	50	31.4	38.16	26.26	R	13	R					2.2	R					
1193	29	3	2010	2	40	38.1	38.82	40.15	R	6	R					2.8	R					
1194	29	3	2010	2	55	41.6	40.67	29.17	R	6	R					2.6	R	2.5	R			
1195	29	3	2010	5	54	10.3	37.52	35.50	R	5	R					2.9	R					
1196	29	3	2010	6	33	21.7	38.85	40.12	R	15	R					2.9	R					
1197	29	3	2010	7	52	24.0	37.27	28.18	R	5	R					2.8	R					
1198	29	3	2010	8	3	18.9	38.82	40.13	R	7	R					3.3	R					
1199	29	3	2010	8	9	24.1	38.82	40.13	R	7	R					3.0	R	3.2	R			
1200	29	3	2010	8	16	58.2	38.01	37.62	R	5	R					2.7	R					

TÜRKİYE DEPREM ETKİNLİĞİ (2010 YILI MART AYI)

No	Tarih - Date			Zaman - Time			Koordinat - Coordinate			Derinlik - Depth		Magnitüd - Magnitude										
	Gün	Ay	Yıl	Saat	Dak.	San.	Enlem-K	Boylam-D	Ref	Km.	Ref	Ms	Ref	Mb	Ref	Md	Ref	MI	Ref	Mw	Ref	
1201	29	3	2010	9	28	59.2	37.11	28.45	R	7	R					2.7	R					
1202	29	3	2010	10	6	33.4	39.25	27.82	R	13	R					2.5	R					
1203	29	3	2010	11	2	57.4	39.73	27.98	R	11	R					2.5	R					
1204	29	3	2010	11	29	25.7	37.18	27.88	R	3	R					2.7	R					
1205	29	3	2010	12	49	41.5	42.49	26.45	R	5	R							3.1	R			
1206	29	3	2010	12	51	51.1	40.77	26.35	R	11	R					2.1	R					
1207	29	3	2010	13	12	36.7	41.41	35.93	R	5	R							3.1	R			
1208	29	3	2010	13	45	30.0	36.94	27.49	R	16	R					2.4	R					
1209	29	3	2010	14	52	48.4	37.25	28.19	R	16	R					2.6	R					
1210	29	3	2010	14	53	58.4	37.19	28.33	R	14	R					2.4	R					
1211	29	3	2010	15	6	37.9	38.83	40.13	R	5	R					3.1	R	2.9	R			
1212	29	3	2010	15	22	48.3	40.56	29.05	R	8	R					2.6	R					
1213	29	3	2010	15	26	36.7	38.91	40.16	R	5	R					2.7	R					
1214	29	3	2010	15	36	33.0	39.30	38.36	R	10	R					2.7	R					
1215	29	3	2010	15	38	56.8	38.77	38.18	R	5	R					2.6	R					
1216	29	3	2010	15	59	17.4	36.21	41.31	R	4	R							3.3	R			
1217	29	3	2010	16	13	53.7	38.76	40.15	R	25	R					2.4	R					
1218	29	3	2010	16	14	7.8	38.92	26.96	R	10	R					2.5	R					
1219	29	3	2010	16	18	5.4	38.03	26.22	R	15	R					2.7	R					
1220	29	3	2010	16	22	15.0	40.57	27.54	R	7	R					2.4	R					

TÜRKİYE DEPREM ETKİNLİĞİ (2010 YILI MART AYI)

No	Tarih - Date			Zaman - Time			Koordinat - Coordinate			Derinlik - Depth		Magnitüd - Magnitude										
	Gün	Ay	Yıl	Saat	Dak.	San.	Enlem-K	Boylam-D	Ref	Km.	Ref	Ms	Ref	Mb	Ref	Md	Ref	MI	Ref	Mw	Ref	
1221	29	3	2010	16	35	23.8	38.85	40.13	R	8	R					2.8	R					
1222	29	3	2010	16	39	30.7	38.19	26.79	R	8	R					2.7	R					
1223	29	3	2010	16	46	59.4	35.36	26.29	R	53	R							3.1	R			
1224	29	3	2010	17	43	48.5	40.42	27.10	R	8	R					2.5	R					
1225	29	3	2010	18	14	54.2	38.81	40.12	R	5	R					3.0	R					
1226	29	3	2010	18	19	54.9	38.32	26.30	R	9	R					2.6	R					
1227	29	3	2010	19	55	50.2	40.88	27.94	R	5	R					2.3	R					
1228	29	3	2010	20	23	15.5	39.29	27.95	R	5	R					2.6	R					
1229	29	3	2010	20	36	38.7	38.51	31.96	R	6	R					2.5	R					
1230	29	3	2010	20	45	37.8	37.13	28.68	R	9	R					2.8	R					
1231	29	3	2010	21	43	5.6	40.79	28.01	R	7	R					2.6	R					
1232	29	3	2010	21	43	14.1	38.73	27.85	R	6	R					2.4	R					
1233	29	3	2010	23	4	18.0	40.39	25.91	R	6	R					2.5	R					
1234	29	3	2010	23	11	50.6	38.78	40.14	R	5	R					2.7	R					
1235	29	3	2010	23	31	4.9	40.39	26.06	R	6	R					2.7	R					
1236	29	3	2010	23	31	51.0	40.35	26.00	R	6	R					2.5	R					
1237	29	3	2010	23	38	12.1	38.85	40.05	R	4	R					2.7	R					
1238	30	3	2010	0	8	42.6	34.99	27.18	R	27	R					3.4	R					
1239	30	3	2010	0	9	53.1	38.79	40.13	R	5	R					2.8	R					
1240	30	3	2010	0	22	12.2	40.80	28.22	R	8	R					2.3	R					

TÜRKİYE DEPREM ETKİNLİĞİ (2010 YILI MART AYI)

No	Tarih - Date			Zaman - Time			Koordinat - Coordinate			Derinlik - Depth		Magnitüd - Magnitude										
	Gün	Ay	Yıl	Saat	Dak.	San.	Enlem-K	Boylam-D	Ref	Km.	Ref	Ms	Ref	Mb	Ref	Md	Ref	MI	Ref	Mw	Ref	
1241	30	3	2010	0	26	1.8	35.57	26.21	R	11	R					3.5	R					
1242	30	3	2010	0	50	36.6	38.82	40.18	R	4	R					3.0	R					
1243	30	3	2010	1	19	18.8	39.65	42.57	R	5	R					2.6	R					
1244	30	3	2010	1	21	29.6	38.24	27.72	R	5	R					2.1	R					
1245	30	3	2010	3	1	21.4	38.23	26.15	R	2	R					2.9	R					
1246	30	3	2010	3	11	14.7	39.36	40.89	R	5	R					3.2	R					
1247	30	3	2010	3	31	6.2	38.67	28.92	R	5	R					2.7	R					
1248	30	3	2010	3	35	7.9	39.00	28.11	R	5	R					2.3	R					
1249	30	3	2010	3	40	8.3	38.19	26.15	R	10	R					2.8	R					
1250	30	3	2010	3	45	4.5	38.43	33.16	R	10	R					2.9	R					
1251	30	3	2010	4	30	11.7	40.42	29.14	R	3	R					2.3	R					
1252	30	3	2010	5	9	28.8	38.84	40.13	R	2	R					3.0	R					
1253	30	3	2010	7	40	12.2	38.72	40.09	R	7	R					2.5	R					
1254	30	3	2010	8	2	45.8	37.24	28.13	R	8	R					2.8	R					
1255	30	3	2010	8	44	32.6	37.27	28.18	R	3	R					2.7	R					
1256	30	3	2010	8	48	20.4	37.28	28.19	R	5	R							2.0	R			
1257	30	3	2010	9	46	43.9	39.41	27.88	R	9	R					2.4	R					
1258	30	3	2010	10	58	4.6	38.85	40.11	R	5	R					2.6	R					
1259	30	3	2010	11	7	59.3	41.69	35.23	R	5	R					2.9	R					
1260	30	3	2010	11	12	35.3	39.93	40.50	R	24	R					2.7	R					

TÜRKİYE DEPREM ETKİNLİĞİ (2010 YILI MART AYI)

No	Tarih - Date			Zaman - Time			Koordinat - Coordinate			Derinlik - Depth		Magnitüd - Magnitude										
	Gün	Ay	Yıl	Saat	Dak.	San.	Enlem-K	Boylam-D	Ref	Km.	Ref	Ms	Ref	Mb	Ref	Md	Ref	MI	Ref	Mw	Ref	
1261	30	3	2010	11	30	3.4	37.33	38.91	R	18	R					2.1	R					
1262	30	3	2010	12	49	3.5	37.38	39.37	R	20	R					2.4	R					
1263	30	3	2010	12	57	11.5	38.68	30.94	R	22	R					2.7	R					
1264	30	3	2010	14	13	30.2	37.60	38.58	R	6	R					2.2	R					
1265	30	3	2010	14	22	25.1	40.58	26.46	R	5	R					2.3	R					
1266	30	3	2010	14	35	57.9	37.42	35.45	R	8	R					2.5	R					
1267	30	3	2010	14	42	47.2	37.26	28.20	R	6	R					2.7	R					
1268	30	3	2010	14	43	54.9	34.98	27.69	R	4	R							2.9	R			
1269	30	3	2010	14	44	34.5	38.04	32.27	R	17	R					2.7	R					
1270	30	3	2010	14	52	44.5	37.22	28.17	R	5	R					2.7	R					
1271	30	3	2010	14	55	33.9	38.38	26.33	R	9	R					2.7	R					
1272	30	3	2010	15	31	10.0	35.92	27.19	R	20	R					3.3	R					
1273	30	3	2010	15	35	4.2	38.40	26.51	R	6	R					2.9	R					
1274	30	3	2010	16	2	23.0	39.61	28.84	R	12	R					2.8	R					
1275	30	3	2010	16	7	22.5	37.62	35.66	R	13	R					2.6	R					
1276	30	3	2010	16	41	48.3	38.56	40.68	R	3	R					2.8	R					
1277	30	3	2010	16	54	12.5	40.36	27.46	R	7	R					2.7	R					
1278	30	3	2010	16	54	33.5	39.34	40.72	R	5	R					2.9	R					
1279	30	3	2010	17	18	3.7	38.59	30.36	R	6	R					3.0	R					
1280	30	3	2010	17	31	26.8	36.91	28.85	R	5	R					2.0	R					

TÜRKİYE DEPREM ETKİNLİĞİ (2010 YILI MART AYI)

No	Tarih - Date			Zaman - Time			Koordinat - Coordinate			Derinlik - Depth		Magnitüd - Magnitude									
	Gün	Ay	Yıl	Saat	Dak.	San.	Enlem-K	Boylam-D	Ref	Km.	Ref	Ms	Ref	Mb	Ref	Md	Ref	MI	Ref	Mw	Ref
1281	30	3	2010	18	4	28.8	34.70	25.75	R	28	R					3.3	R				
1282	30	3	2010	18	13	39.2	39.91	40.15	R	5	R					3.0	R				
1283	30	3	2010	18	19	41.3	38.86	40.16	R	5	R					3.2	R				
1284	30	3	2010	18	24	21.5	38.78	31.42	R	8	R					2.5	R				
1285	30	3	2010	18	25	9.0	38.77	31.45	R	4	R					2.8	R				
1286	30	3	2010	18	49	23.0	36.96	42.75	R	5	R							3.1	R		
1287	30	3	2010	18	58	52.1	39.74	38.86	R	17	R					2.6	R				
1288	30	3	2010	19	55	50.8	37.58	38.88	R	22	R					2.7	R				
1289	30	3	2010	22	30	39.5	39.89	28.80	R	8	R					2.8	R				
1290	30	3	2010	23	56	6.8	39.50	26.16	R	5	R					3.0	R				
1291	31	3	2010	0	19	18.9	38.55	28.23	R	7	R					2.9	R				
1292	31	3	2010	0	20	0.1	37.50	43.60	R	7	R					3.1	R				
1293	31	3	2010	1	22	47.2	37.51	38.99	R	14	R							3.2	R		
1294	31	3	2010	1	27	21.4	38.80	40.18	R	8	R					2.8	R				
1295	31	3	2010	3	43	49.4	38.84	40.15	R	5	R							3.3	R		
1296	31	3	2010	4	17	56.9	37.40	44.51	R	9	R					3.2	R				
1297	31	3	2010	5	55	23.3	38.44	39.33	R	5	R					3.3	R				
1298	31	3	2010	6	4	48.6	38.83	40.15	R	9	R					3.3	R				
1299	31	3	2010	6	10	15.8	37.08	28.34	R	10	R					3.1	R				
1300	31	3	2010	6	24	26.7	37.23	28.15	R	5	R					2.7	R				

TÜRKİYE DEPREM ETKİNLİĞİ (2010 YILI MART AYI)

No	Tarih - Date			Zaman - Time			Koordinat - Coordinate			Derinlik - Depth		Magnitüd - Magnitude									
	Gün	Ay	Yıl	Saat	Dak.	San.	Enlem-K	Boylam-D	Ref	Km.	Ref	Ms	Ref	Mb	Ref	Md	Ref	MI	Ref	Mw	Ref
1301	31	3	2010	7	9	21.1	34.87	25.69	R	30	R							3.2	R		
1302	31	3	2010	7	57	38.4	39.69	38.59	R	27	R					2.3	R				
1303	31	3	2010	8	48	16.5	37.17	28.22	R	22	R					2.7	R				
1304	31	3	2010	8	57	16.6	40.94	38.85	R	15	R					2.1	R				
1305	31	3	2010	9	4	42.8	39.46	26.27	R	14	R					2.7	R				
1306	31	3	2010	9	12	5.6	37.17	27.89	R	22	R					2.7	R				
1307	31	3	2010	10	36	17.6	36.75	31.61	R	24	R					3.6	R				
1308	31	3	2010	11	15	18.4	34.51	32.92	R	6	R					2.8	R				
1309	31	3	2010	11	50	40.8	36.79	39.19	R	18	R					3.1	R				
1310	31	3	2010	12	9	49.6	38.11	32.37	R	15	R					2.0	R				
1311	31	3	2010	13	38	10.7	36.22	28.20	R	72	R							3.3	R		
1312	31	3	2010	14	2	1.4	40.55	30.11	R	13	R					2.6	R				
1313	31	3	2010	14	20	36.4	38.93	40.13	R	5	R					2.7	R				
1314	31	3	2010	14	22	46.9	38.78	39.39	R	28	R					2.4	R				
1315	31	3	2010	14	45	51.5	37.31	28.25	R	10	R					2.8	R				
1316	31	3	2010	14	49	28.2	37.24	28.19	R	2	R					2.5	R				
1317	31	3	2010	14	49	36.1	39.42	36.65	R	10	R					2.5	R				
1318	31	3	2010	14	53	18.3	40.83	34.62	R	4	R					2.9	R				
1319	31	3	2010	15	0	52.5	39.16	28.38	R	10	R					2.7	R				
1320	31	3	2010	15	2	3.7	37.20	27.89	R	22	R					2.4	R				

TÜRKİYE DEPREM ETKİNLİĞİ (2010 YILI MART AYI)

No	Tarih - Date			Zaman - Time			Koordinat - Coordinate			Derinlik - Depth		Magnitüd - Magnitude									
	Gün	Ay	Yıl	Saat	Dak.	San.	Enlem-K	Boylam-D	Ref	Km.	Ref	Ms	Ref	Mb	Ref	Md	Ref	MI	Ref	Mw	Ref
1321	31	3	2010	15	15	43.9	40.20	28.82	R	9	R					2.5	R				
1322	31	3	2010	15	53	10.0	40.64	26.59	R	16	R					2.0	R				
1323	31	3	2010	19	24	15.5	38.82	40.20	R	7	R					2.9	R				
1324	31	3	2010	22	10	32.0	39.69	41.50	R	3	R					2.7	R				
1325	31	3	2010	22	35	9.4	36.85	28.43	R	9	R					2.5	R				
1326	31	3	2010	22	52	4.5	38.78	38.81	R	3	R					2.7	R				
1327	31	3	2010	22	59	56.6	39.60	29.02	R	5	R					2.7	R				
1328	31	3	2010	23	1	21.8	38.76	40.11	R	15	R					2.6	R				
1329	31	3	2010	23	20	25.6	38.99	28.09	R	9	R					2.6	R				
1330	31	3	2010	23	53	4.8	36.75	44.53	R	94	R					3.0	R				