



Kandilli Rasathanesi Ve Deprem Araştırma Enstitüsü

ULUSAL DEPREM İZLEME MERKEZİ



*2010 HAZİRAN AYI
BÜLTENİ*

*YIL: 7 - SAYI: 78
İSTANBUL*

Hazırlayan ve Katkıda Bulunanlar

D. Kalafat

K. Kekovalı

K. Kılıç

Y. Güneş

Z. Öğütcü

M. Kara

M. Yilmazer

M. Suvarıklı

E. Görgün

M. Çomoğlu

A. Küsmezer

P. Deniz

A. Berberoğlu

M. Berberoğlu

S. Poyraz

D. Kepekçi

R. Polat

M.F. Akkoyunlu

M.D. Cambaz

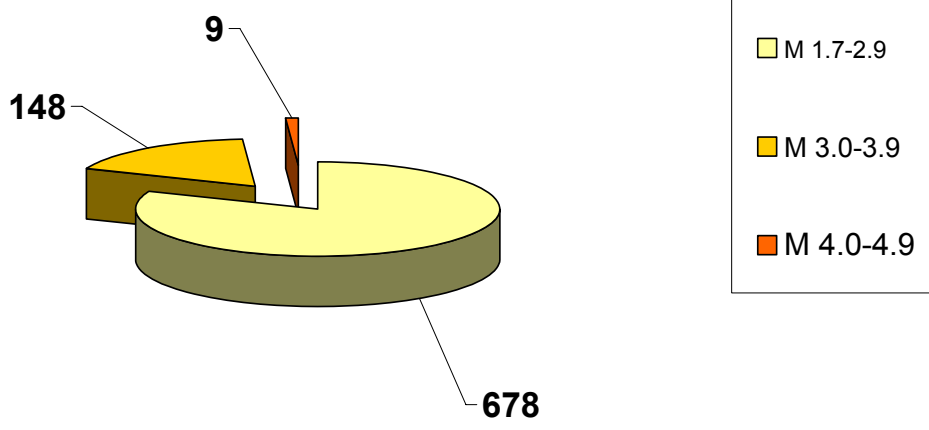
Ö. Çok

M. Özer

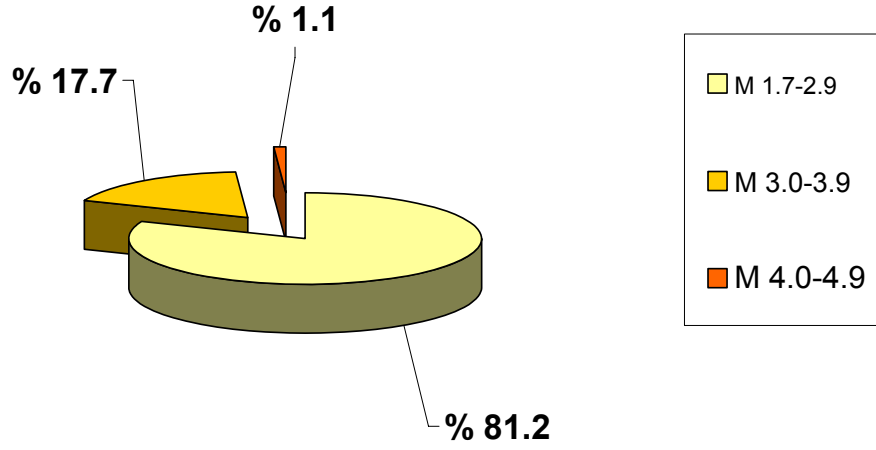
2010 yılı Haziran ayında meydana gelen depremlerin
istatistiksel dağılımı

MAGNİTÜD ARALIĞI	TOPLAM
1.7-2.9	678
3.0-3.9	148
4.0-4.9	9
5.0-5.9	—
6.0-6.9	—
7.0-7.9	—
TOPLAM	835

2010 HAZİRAN AYI DEPREMLERİNİN İSTATİSTİKSEL DAĞILIMI
(Toplam: 835 Adet)



2010 HAZİRAN AYI DEPREMLERİNİN İSTATİSTİKSEL DAĞILIMI (%)



DEĞERLENDİRME

Haziran ayında toplam 836 depremin çözümlü yapılmıştır. Büyüklüğü 4.0 ve üzerinde olan deprem sayısı 9 adettir. Toplam meydana gelen depremlerin % 81.6 oranını büyüklükleri $M=1.7-2.9$ arasındaki depremler oluşturmaktadır.

Haziran ayındaki en önemli depremler ;

Tarih			Zaman		Koordinat		Derinlik	Magnitüd	Yer
Gün	Ay	Yıl	Saat	Dak.	Enlem-K	Boylam-D	Km.	M	
6	6	2010	12	21	35.59	24.81	63	4.4	AKDENİZ
9	6	2010	17	25	43.51	45.54	7	4.4	RUSYA
9	6	2010	17	29	43.33	45.53	10	4.4	RUSYA
7	6	2010	9	26	42.75	41.64	7	4.2	GÜRCİSTAN
11	6	2010	10	56	40.43	28.94	14	4.2	GEMLİK KÖRFEZİ (MARMARA DENİZİ)
6	6	2010	7	2	38.95	25.95	14	4.1	EGE DENİZİ
8	6	2010	4	26	37.70	36.14	8	4.1	ANDIRIN KAHRAMANMARAŞ
9	6	2010	18	30	35.15	27.18	17	4.1	AKDENİZ
25	6	2010	19	28	35.47	26.30	15	4.1	AKDENİZ

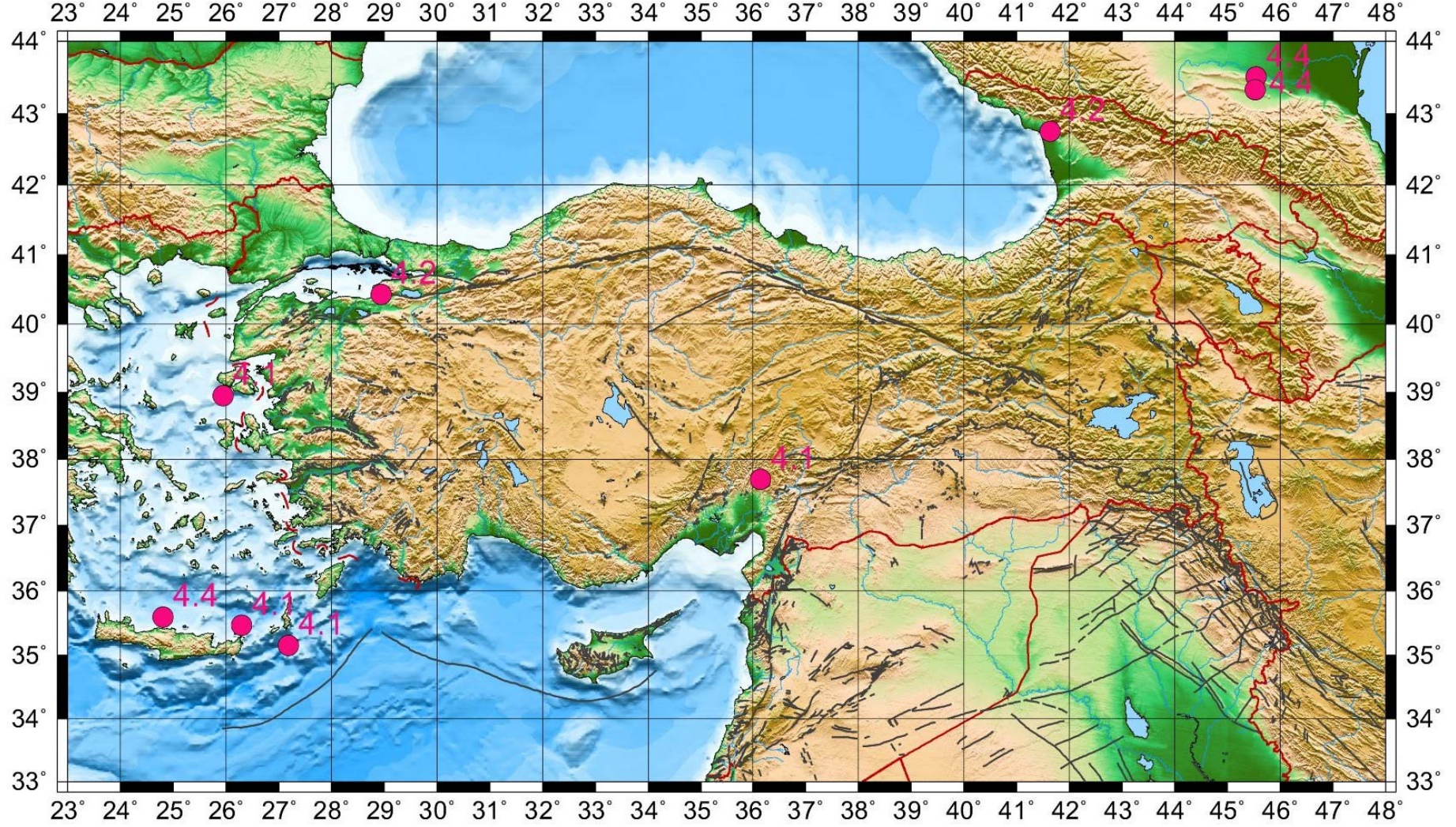
Ayrıca, Oniki Adalar bölgesinde, Akdeniz, Gökova Körfezi-Yerkesik-Yatağan-Muğla, Emet-Kütahya, Gökçeada batısı-Ege Denizi, Urla-İzmir ve Gemlik Körfezi'nde meydana gelen deprem etkinlikleri dikkat çekmektedir. Doğu Anadolu Fay Zonu boyunca ise Kadirli-Adana, Palu-Sivrice-Elazığ'da deprem etkinlikleri gözlenmiştir.

100 adet geniş bantlı (Broad Band) istasyonun Haziran ayı içerisindeki çalışma performansları % 80 dir. Bu ay içerisinde 16 adet geniş bantlı (Broad Band) deprem istasyonu verimsiz olmuştur.

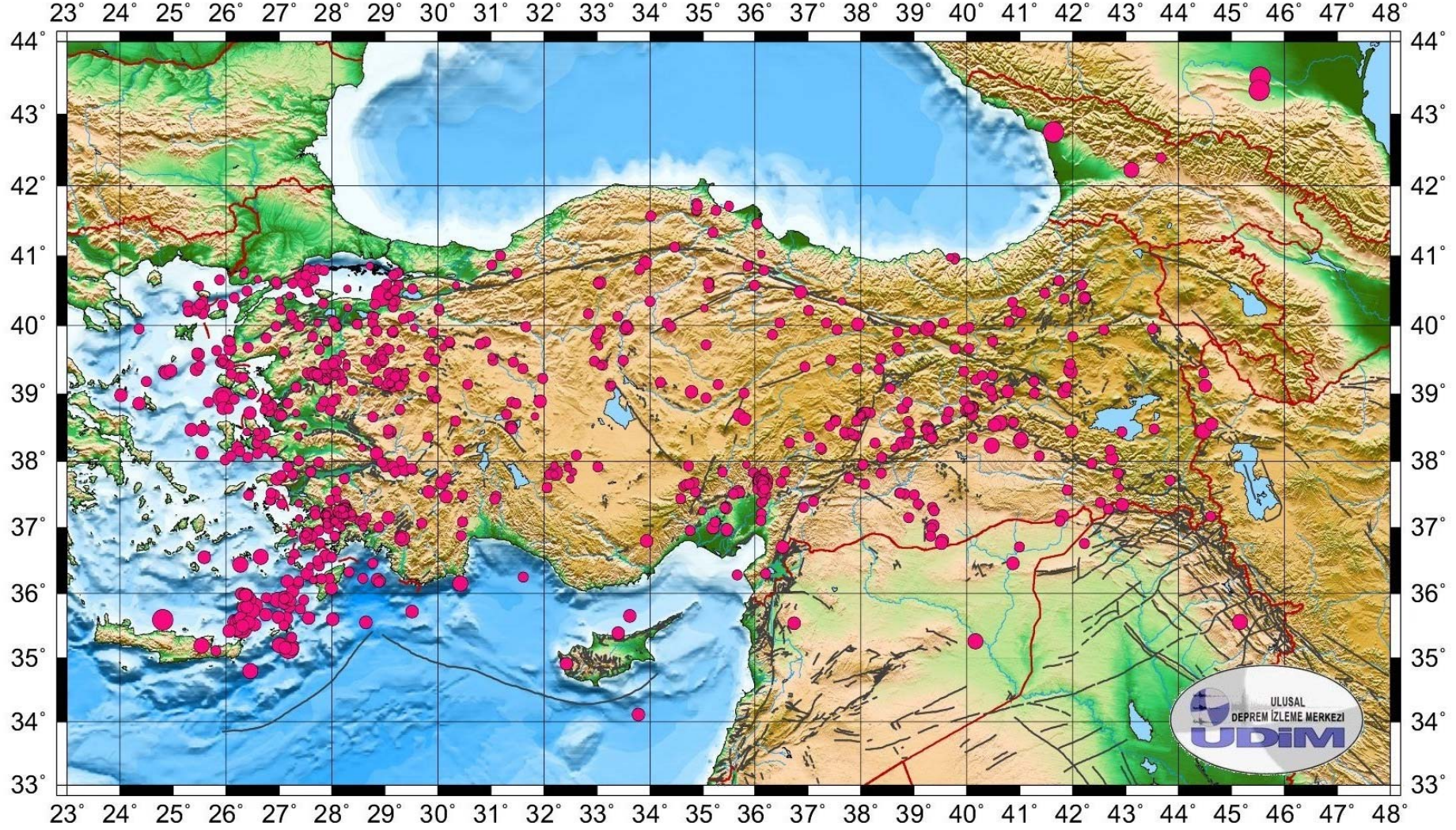
22 adet kısa periyotlu (SP) istasyonun Haziran ayı içerisindeki çalışma performansları % 94 olup, Tokat (TOKT) kısa periyot deprem istasyonunun aylık verimlilik oranı % 67 olmuştur.

Haziran ayı itibarıyla deprem istasyonlarının ve *sismik ağın ortalama verimlilik performansı* % 83 olmuştur.

TÜRKİYE VE YAKIN ÇEVRESİNDE M ≥ 4.0 OLAN DEPREMLER (HAZİRAN 2010)



TÜRKİYE VE YAKIN ÇEVRESİ DEPREM ETKİNLİĞİ (HAZİRAN 2010) **Toplam: 835 Adet**



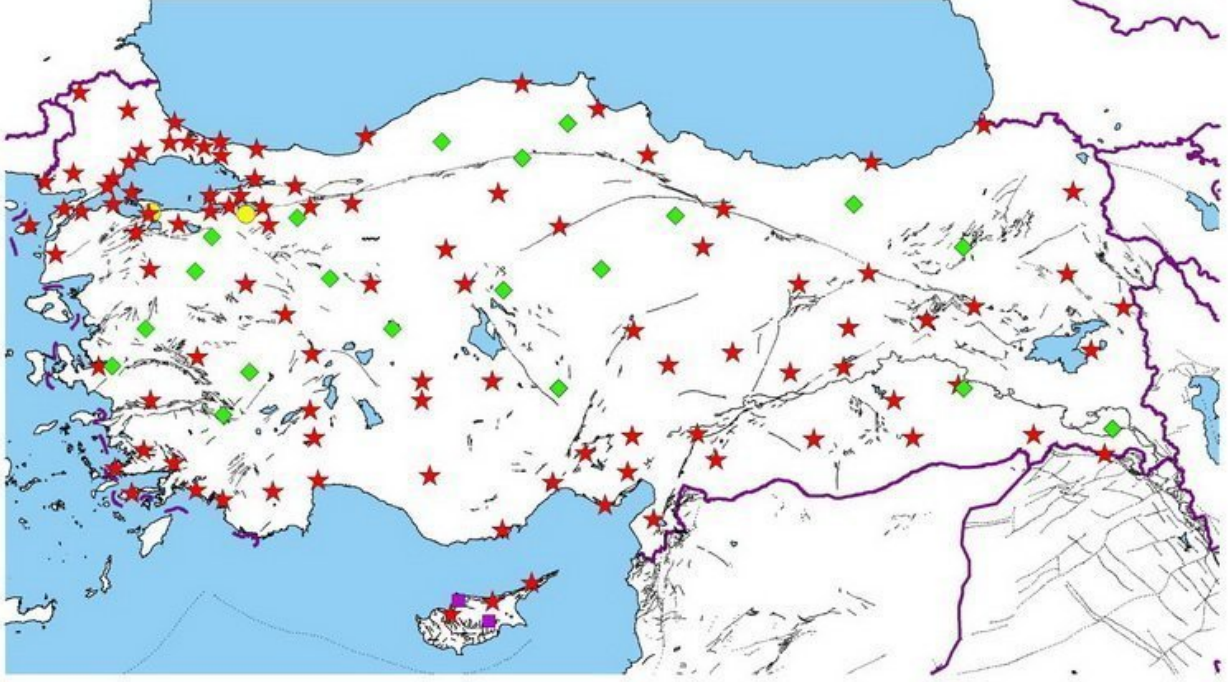
HAZİRAN 2010

İSTASYON VERİMLİLİK

TABLOLARI

B.Ü.
KANDILLI RASATHANESİ VE DEPREM ARAŞTIRMA ENSTİTÜSÜ
ULUSAL DEPREM İZLEME MERKEZİ
DEPREM İSTASYONLARI

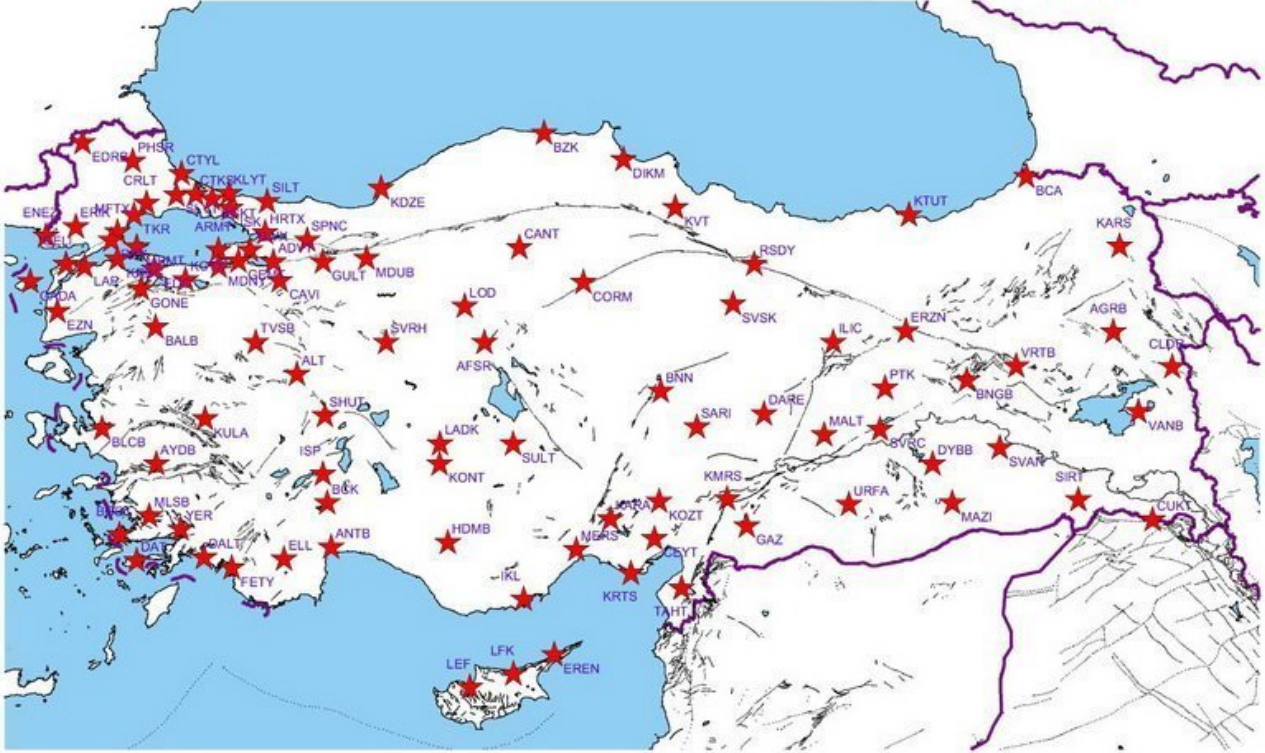
Haziran 2010
Toplam : 124 Adet



★ GENİŞ BANT ◆ KISA PERİYOT ● TELEMETRİ KISA PERİYOT ■ İVME ÖLÇER

GENİŞ BANTLI (BROADBAND) DEPREM İSTASYONLARI

Haziran 2010
100 Adet



Adet	Yöntem	Kod	(+) adet	(-) adet	TOPLAM GÜN	(+)%	(-)%	(+)%	(-)%
1	1	ADVT	30	0	30	100	0		
2	2	AFSR	30	0	30	100	0		
3	3	AGRB	30	0	30	100	0		
4	4	ALT	28	2	30	93	7		
5	5	ANTB	30	0	30	100	0		
6	6	ARMT	30	0	30	100	0		
7	7	AYDB	30	0	30	100	0		
8	8	BALB	24	6	30	80	20		
9	9	BCA	30	0	30	100	0		
10	10	BCK	30	0	30	100	0		
11	11	BGKT	30	0	30	100	0		
12	12	BLCB	26	4	30	87	13		
13	13	BNGB	30	0	30	100	0		
14	14	BNN	0	30	30	0	100		
15	15	BODT	30	0	30	100	0		
16	16	BZK	30	0	30	100	0		
17	17	CANT	30	0	30	100	0		
18	18	CAVI	30	0	30	100	0		
19	19	CEYT	29	1	30	97	3		
20	20	CLDR	30	0	30	100	0		
21	21	CORM	24	6	30	80	20		
22	22	CRLT	30	0	30	100	0		
23	23	CTKS	30	0	30	100	0		
24	24	CTYL	6	24	30	20	80		
25	25	CUKT	30	0	30	100	0		
26	26	DALY	25	5	30	83	17		
27	27	DARE	29	1	30	97	3		
28	28	DAT	14	16	30	47	53		
29	29	DIKM	30	0	30	100	0		
30	30	DYBB	30	0	30	100	0		
31	31	EDC	30	0	30	77	23		
32	32	EDRB	23	7	30	77	23		
33	33	ELL	30	0	30	100	0		
34	34	ENEZ	29	1	30	97	3		
35	35	EREN	30	0	30	100	0		
36	36	ERIK	9	21	30	30	70		
37	37	ERZN	30	0	30	100	0		
38	38	EZNY	30	0	30	100	0		
39	39	FETY	1	29	30	3	97		
40	40	GADA	30	0	30	100	0		
41	41	GAZ	0	30	30	0	100		
42	42	GELI	30	0	30	100	0		
43	43	GEMT	10	20	30	33	67		
44	44	GONE	0	30	30	0	100		
45	45	GULT	25	5	30	83	17		
46	46	HDMB	30	0	30	100	0		
47	47	HRTX	29	1	30	97	3		
48	48	IKL	0	30	30	0	100		
49	49	ILIC	15	15	30	50	50		
50	50	ISK	30	0	30	100	0		
51	51	ISP	30	0	30	100	0		
52	52	KARA	30	0	30	100	0		
53	53	KARS	29	1	30	97	3		
54	54	KCTX	30	0	30	100	0		
55	55	KDZE	1	29	30	3	97		
56	56	KLYT	30	0	30	100	0		
57	57	KMRS	30	0	30	100	0		
58	58	KONT	30	0	30	100	0		
59	59	KOZT	30	0	30	100	0		
60	60	KRBG	16	14	30	53	47		
61	61	KRTS	30	0	30	100	0		
62	62	KTUT	25	5	30	83	17		
63	63	KULA	29	1	30	97	3		
64	64	KVT	29	1	30	97	3		
65	65	LADK	30	0	30	100	0		
66	66	LAP	26	4	30	87	13		
67	67	LEF	30	0	30	100	0		
68	68	LFK	28	2	30	93	7		
69	69	LOD	30	0	30	100	0		
70	70	MALT	30	0	30	100	0		
71	71	MAZI	28	2	30	93	7		
72	72	MDNY	3	27	30	10	90		
73	73	MDUB	6	24	30	20	80		
74	74	MERS	30	0	30	100	0		
75	75	MFTX	0	30	30	0	100		
76	76	MLSB	0	30	30	0	100		
77	77	MRMT	30	0	30	100	0		
78	78	PHRS	30	0	30	100	0		
79	79	PTK	23	7	30	77	23		
80	80	RKY	3	27	30	10	90		
81	81	RSDY	30	0	30	100	0		
82	82	SARI	0	30	30	0	100		
83	83	SHUT	8	22	30	27	73		
84	84	SILT	30	0	30	100	0		
85	85	SIRT	30	0	30	100	0		
86	86	SLVT	30	0	30	100	0		
87	87	SPNC	30	0	30	100	0		
88	88	SULT	29	1	30	97	3		
89	89	SVAN	30	0	30	100	0		
90	90	SVRC	19	11	30	63	37		
91	91	SVRH	30	0	30	100	0		
92	92	SVSK	29	1	30	97	3		
93	93	TAHT	30	0	30	100	0		
94	94	TKR	30	0	30	100	0		
95	95	TVSB	30	0	30	100	0		
96	96	URFA	30	0	30	100	0		
97	97	VANB	30	0	30	100	0		
98	98	VRTB	26	4	30	87	13		
99	99	YER	30	0	30	100	0		
100	100	YLVX	0	30	30	0	100		

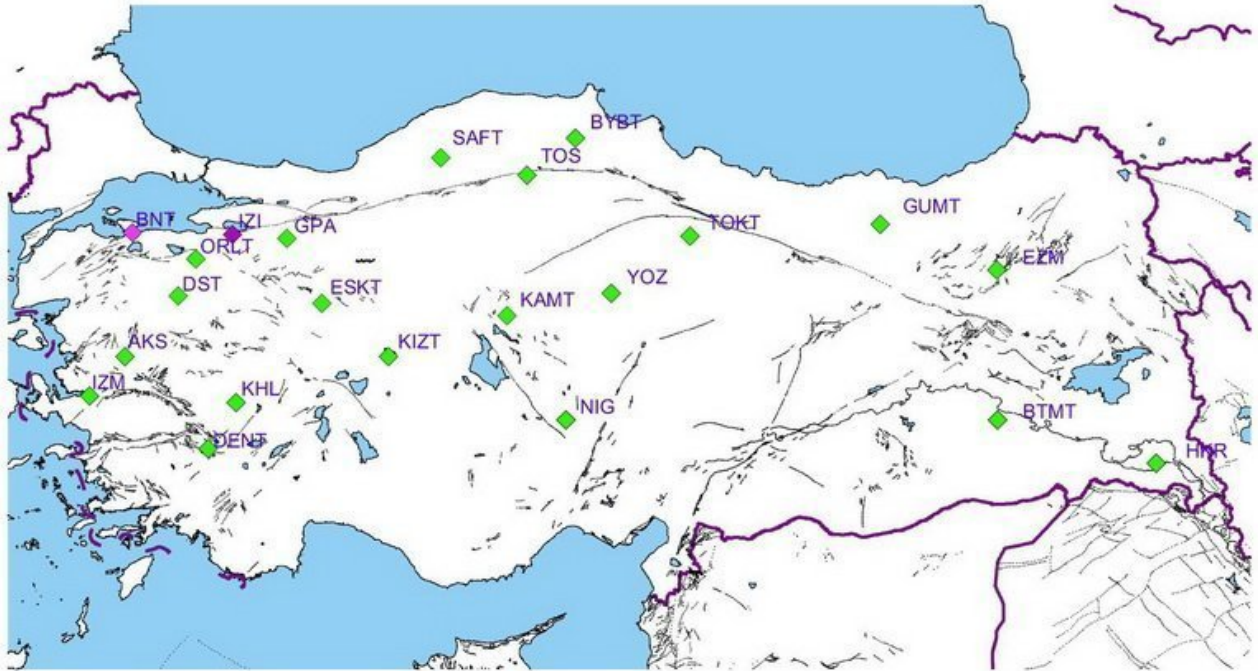
GENİŞ BANTLI (BROAD-BAND) İSTASYONLAR

80

20

101	1	KISA PERİYOT (SHORT PERIOD) İSTASYONLAR	AKS	30	0	30	100	0	94	6
102	2		BNT	30	0	30	100	0		
103	3		BTMT	30	0	30	100	0		
104	4		BYBT	30	0	30	100	0		
105	5		DENT	23	7	30	77	23		
106	6		DST	30	0	30	100	0		
107	7		ESKT	30	0	30	100	0		
108	8		EZM	30	0	30	100	0		
109	9		GPA	30	0	30	100	0		
110	10		GUMT	29	1	30	97	3		
111	11		HKR	30	0	30	100	0		
112	12		IZI	21	9	30	70	30		
113	13		IZM	30	0	30	100	0		
114	14		KAMT	30	0	30	100	0		
115	15		KHL	30	0	30	100	0		
116	16		KIZT	30	0	30	100	0		
117	17		NIG	30	0	30	100	0		
118	18		ORLT	30	0	30	100	0		
119	19		SAFT	30	0	30	100	0		
120	20		TOKT	10	20	30	33	67		
121	21		TOS	30	0	30	100	0		
122	22		YOZ	30	0	30	100	0		
							+	(-)		
2010 HAZİRAN ORTALAMA %							83	17		

KISA PERİYOT (SP) İSTASYONLAR Toplam: 22 Adet Haziran 2010

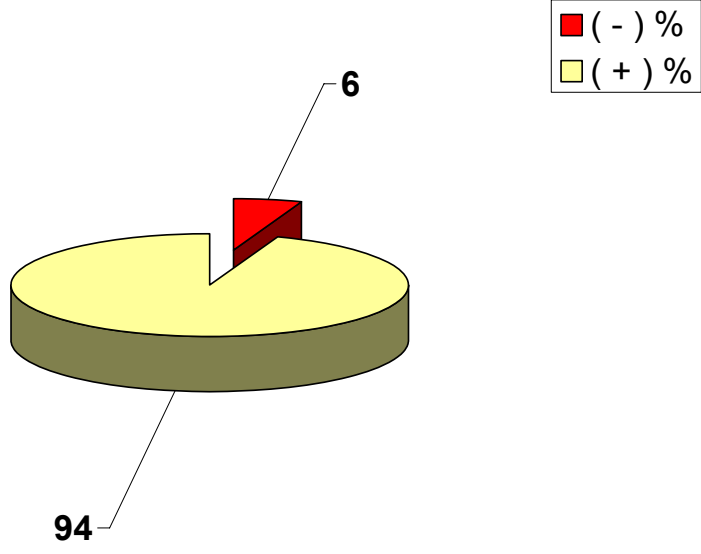


◆ Kısa Periyot
TELEFON HATTI
20 Adet

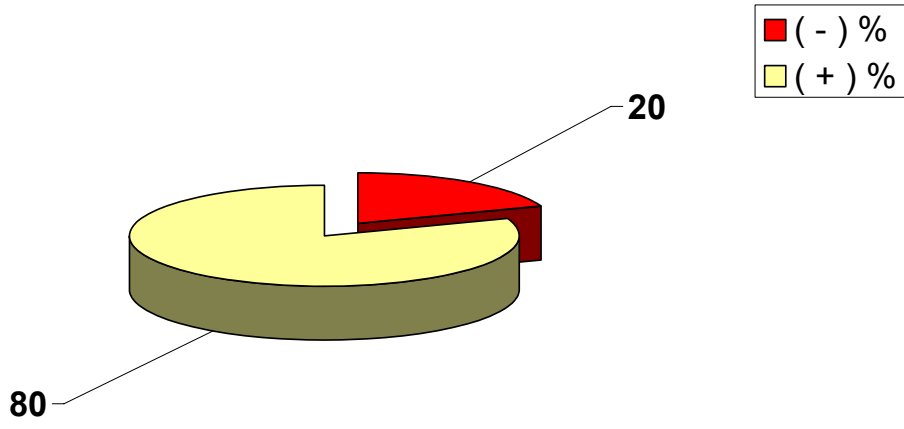
◆ Kısa Periyot
TELEMETRİ
1 Adet

◆ Kısa Periyot
UYDU İLETİŞİMLİ
1 Adet

2010 HAZİRAN AYI SHORT PERIOD İSTASYONLARI VERİMLİLİK GRAFİĞİ



2010 HAZİRAN AYI BROAD-BAND İSTASYONLARI VERİMLİLİK GRAFİĞİ



TÜRKİYE DEPREM ETKİNLİĞİ (2010 YILI HAZİRAN AYI)

No	Tarih - Date			Zaman - Time			Koordinat - Coordinate			Derinlik - Depth		Magnitüd - Magnitude									
	Gün	Ay	Yıl	Saat	Dak.	San.	Enlem-K	Boylam-D	Ref	Km.	Ref	Ms	Ref	Mb	Ref	Md	Ref	MI	Ref	Mw	Ref
1	1	6	2010	1	55	46.6	37.36	27.05	R	4	R					2.8	R				
2	1	6	2010	3	43	35.8	37.54	35.68	R	5	R					3.0	R				
3	1	6	2010	5	24	22.4	38.72	38.03	R	8	R					2.6	R				
4	1	6	2010	5	30	58.1	38.67	38.01	R	20	R					2.6	R				
5	1	6	2010	5	59	0.0	37.16	28.15	R	15	R					2.6	R				
6	1	6	2010	7	47	44.6	37.26	28.23	R	2	R					2.4	R				
7	1	6	2010	8	13	38.3	38.73	38.05	R	15	R					2.6	R				
8	1	6	2010	8	26	47.0	38.34	26.60	R	5	R					2.7	R				
9	1	6	2010	9	22	5.0	38.27	38.27	R	10	R					2.7	R				
10	1	6	2010	9	22	5.0	38.27	38.27	R	10	R					2.7	R				
11	1	6	2010	10	44	24.9	38.31	38.87	R	5	R					2.5	R				
12	1	6	2010	11	6	50.1	37.51	38.83	R	17	R					2.7	R				
13	1	6	2010	12	9	39.6	41.75	34.88	R	7	R					2.8	R				
14	1	6	2010	13	0	47.1	37.22	28.11	R	16	R					2.6	R				
15	1	6	2010	15	12	10.0	37.14	27.89	R	14	R					2.4	R				
16	1	6	2010	15	15	25.3	37.15	38.90	R	3	R					2.7	R				
17	1	6	2010	15	26	16.8	39.67	29.03	R	6	R					2.6	R				
18	1	6	2010	15	27	21.9	39.97	29.55	R	5	R					2.3	R				
19	1	6	2010	15	55	5.0	38.61	37.51	R	5	R					2.8	R				
20	1	6	2010	16	1	49.6	40.14	28.81	R	13	R					2.4	R				

TÜRKİYE DEPREM ETKİNLİĞİ (2010 YILI HAZİRAN AYI)

No	Tarih - Date			Zaman - Time			Koordinat - Coordinate			Derinlik - Depth		Magnitüd - Magnitude									
	Gün	Ay	Yıl	Saat	Dak.	San.	Enlem-K	Boylam-D	Ref	Km.	Ref	Ms	Ref	Mb	Ref	Md	Ref	MI	Ref	Mw	Ref
21	1	6	2010	16	15	28.2	40.27	29.15	R	8	R					2.6	R				
22	1	6	2010	16	47	28.1	39.90	29.15	R	10	R					2.6	R				
23	1	6	2010	17	12	26.1	39.90	29.14	R	7	R					2.6	R				
24	1	6	2010	20	33	43.1	38.27	38.77	R	5	R					3.1	R				
25	1	6	2010	20	56	52.5	39.21	27.91	R	8	R					2.7	R				
26	1	6	2010	21	56	0.5	40.57	25.48	R	29	R					2.7	R				
27	1	6	2010	22	12	41.8	38.24	38.87	R	22	R					2.4	R				
28	1	6	2010	22	17	37.4	38.29	38.89	R	6	R					2.7	R				
29	1	6	2010	22	43	9.6	37.17	44.61	R	5	R					2.9	R				
30	2	6	2010	0	18	24.8	36.56	26.65	R	138	R					3.5	R				
31	2	6	2010	0	50	7.9	40.49	36.86	R	6	R					3.1	R				
32	2	6	2010	1	28	32.8	36.19	28.92	R	10	R					2.8	R				
33	2	6	2010	2	22	51.1	38.75	40.12	R	6	R					2.7	R				
34	2	6	2010	2	41	25.6	36.17	28.88	R	12	R					2.8	R				
35	2	6	2010	5	8	9.3	38.68	38.02	R	5	R					2.7	R				
36	2	6	2010	8	46	32.9	37.28	28.11	R	5	R							2.4	R		
37	2	6	2010	9	47	21.3	40.67	26.60	R	10	R					2.2	R				
38	2	6	2010	10	6	59.1	37.21	27.88	R	10	R					2.3	R				
39	2	6	2010	10	7	10.6	39.81	32.98	R	4	R					2.8	R				
40	2	6	2010	11	48	22.2	38.76	40.00	R	5	R							3.4	R		

TÜRKİYE DEPREM ETKİNLİĞİ (2010 YILI HAZİRAN AYI)

No	Tarih - Date			Zaman - Time			Koordinat - Coordinate			Derinlik - Depth		Magnitüd - Magnitude										
	Gün	Ay	Yıl	Saat	Dak.	San.	Enlem-K	Boylam-D	Ref	Km.	Ref	Ms	Ref	Mb	Ref	Md	Ref	MI	Ref	Mw	Ref	
41	2	6	2010	14	44	41.7	37.23	28.17	R	8	R					2.7	R					
42	2	6	2010	14	47	35.1	37.16	28.20	R	14	R					2.6	R					
43	2	6	2010	15	0	54.2	38.60	37.52	R	5	R					2.6	R					
44	2	6	2010	17	2	35.7	39.76	30.90	R	18	R					2.5	R					
45	2	6	2010	17	14	29.6	39.46	28.93	R	4	R					2.7	R					
46	2	6	2010	19	9	32.8	39.50	28.86	R	7	R							3.0	R			
47	2	6	2010	20	26	30.9	36.90	27.63	R	8	R					2.6	R					
48	2	6	2010	21	33	35.0	36.90	27.64	R	5	R					2.7	R					
49	2	6	2010	22	57	8.9	39.50	28.88	R	12	R					2.5	R					
50	2	6	2010	23	4	15.8	36.86	27.55	R	4	R					2.3	R					
51	2	6	2010	23	47	57.8	39.47	28.95	R	5	R					2.7	R					
52	2	6	2010	23	57	23.6	39.67	40.04	R	8	R					2.7	R					
53	3	6	2010	0	42	16.5	40.35	34.00	R	11	R					2.8	R					
54	3	6	2010	2	38	52.5	39.23	29.21	R	13	R					2.7	R					
55	3	6	2010	4	34	24.4	37.31	36.92	R	5	R					2.7	R					
56	3	6	2010	5	12	33.7	37.35	42.94	R	5	R					3.1	R					
57	3	6	2010	6	55	42.9	38.52	31.39	R	13	R					2.9	R					
58	3	6	2010	7	1	11.5	38.48	31.40	R	15	R					2.7	R					
59	3	6	2010	7	40	13.7	37.31	39.35	R	5	R					2.8	R					
60	3	6	2010	7	48	21.2	37.25	28.21	R	5	R					2.7	R					

TÜRKİYE DEPREM ETKİNLİĞİ (2010 YILI HAZİRAN AYI)

No	Tarih - Date			Zaman - Time			Koordinat - Coordinate			Derinlik - Depth		Magnitüd - Magnitude									
	Gün	Ay	Yıl	Saat	Dak.	San.	Enlem-K	Boylam-D	Ref	Km.	Ref	Ms	Ref	Mb	Ref	Md	Ref	MI	Ref	Mw	Ref
61	3	6	2010	8	40	5.7	37.28	28.21	R	2	R					2.5	R				
62	3	6	2010	11	27	14.8	38.76	27.97	R	7	R					2.6	R				
63	3	6	2010	12	6	48.8	38.51	31.38	R	3	R					3.1	R				
64	3	6	2010	12	15	31.0	38.90	39.96	R	25	R					2.5	R				
65	3	6	2010	12	51	8.5	39.95	33.52	R	20	R					2.6	R				
66	3	6	2010	14	22	0.5	37.19	28.18	R	5	R					2.8	R				
67	3	6	2010	14	31	34.4	37.41	27.97	R	9	R					2.5	R				
68	3	6	2010	15	19	56.1	40.40	26.16	R	14	R					2.5	R				
69	3	6	2010	15	31	58.5	38.38	37.91	R	8	R					2.6	R				
70	3	6	2010	15	45	1.7	40.79	26.35	R	4	R					2.4	R				
71	3	6	2010	16	1	50.4	40.22	37.01	R	8	R					2.6	R				
72	3	6	2010	16	25	42.5	38.39	37.73	R	2	R					2.6	R				
73	3	6	2010	16	45	6.0	36.71	40.99	R	5	R					2.9	R				
74	3	6	2010	17	40	27.8	39.24	29.29	R	8	R					2.5	R				
75	3	6	2010	20	47	46.2	39.12	44.50	R	5	R							3.1	R		
76	3	6	2010	20	48	42.9	36.71	36.52	R	3	R					3.0	R				
77	3	6	2010	22	49	7.3	37.69	36.49	R	9	R					2.7	R				
78	3	6	2010	22	50	11.3	40.62	33.05	R	8	R					3.0	R				
79	3	6	2010	22	54	0.4	35.60	28.01	R	5	R					3.1	R				
80	3	6	2010	23	4	53.6	39.42	28.85	R	10	R					2.6	R				

TÜRKİYE DEPREM ETKİNLİĞİ (2010 YILI HAZİRAN AYI)

No	Tarih - Date			Zaman - Time			Koordinat - Coordinate			Derinlik - Depth		Magnitüd - Magnitude									
	Gün	Ay	Yıl	Saat	Dak.	San.	Enlem-K	Boylam-D	Ref	Km.	Ref	Ms	Ref	Mb	Ref	Md	Ref	MI	Ref	Mw	Ref
81	3	6	2010	23	14	4.2	37.84	35.38	R	10	R					2.7	R				
82	3	6	2010	23	57	20.3	37.87	29.53	R	5	R					2.7	R				
83	3	6	2010	23	58	11.1	38.96	29.90	R	9	R					2.6	R				
84	3	6	2010	23	59	28.1	39.48	32.95	R	5	R					2.7	R				
85	4	6	2010	0	42	29.2	38.41	26.72	R	9	R					3.1	R				
86	4	6	2010	1	47	43.0	40.53	28.29	R	5	R					2.4	R				
87	4	6	2010	1	51	20.9	37.31	35.43	R	8	R					2.7	R				
88	4	6	2010	1	54	11.4	38.47	25.34	R	10	R					3.0	R				
89	4	6	2010	5	28	35.3	37.23	28.15	R	5	R					2.6	R				
90	4	6	2010	5	57	47.7	35.65	33.62	R	88	R					3.1	R				
91	4	6	2010	7	11	24.6	37.23	28.17	R	9	R					2.8	R				
92	4	6	2010	7	12	6.2	39.37	37.93	R	10	R					2.9	R				
93	4	6	2010	8	29	26.8	36.46	28.77	R	14	R					2.7	R				
94	4	6	2010	9	19	15.8	37.17	27.88	R	17	R					2.6	R				
95	4	6	2010	9	35	20.4	37.54	34.86	R	12	R					2.5	R				
96	4	6	2010	10	0	28.1	39.94	33.07	R	10	R					2.6	R				
97	4	6	2010	10	58	22.0	40.55	35.12	R	5	R					2.7	R				
98	4	6	2010	12	41	10.1	38.94	35.06	R	13	R					2.9	R				
99	4	6	2010	12	50	44.1	40.34	40.86	R	5	R					2.6	R				
100	4	6	2010	14	52	58.0	39.90	29.91	R	8	R					2.7	R				

TÜRKİYE DEPREM ETKİNLİĞİ (2010 YILI HAZİRAN AYI)

No	Tarih - Date			Zaman - Time			Koordinat - Coordinate			Derinlik - Depth		Magnitüd - Magnitude										
	Gün	Ay	Yıl	Saat	Dak.	San.	Enlem-K	Boylam-D	Ref	Km.	Ref	Ms	Ref	Mb	Ref	Md	Ref	MI	Ref	Mw	Ref	
101	4	6	2010	15	43	38.5	40.00	28.06	R	16	R					2.7	R					
102	4	6	2010	16	22	5.5	40.13	28.76	R	16	R					2.6	R					
103	4	6	2010	16	56	3.4	39.61	28.93	R	4	R					2.7	R					
104	4	6	2010	21	8	48.4	40.69	27.46	R	7	R					2.6	R					
105	4	6	2010	21	57	20.1	37.84	36.57	R	9	R					2.8	R					
106	4	6	2010	22	5	28.9	38.81	27.79	R	7	R					2.8	R					
107	4	6	2010	22	42	42.4	38.15	26.26	R	5	R					2.7	R					
108	5	6	2010	0	43	32.6	37.79	27.04	R	8	R					2.7	R					
109	5	6	2010	1	21	22.0	37.81	27.26	R	9	R					2.6	R					
110	5	6	2010	4	32	59.1	39.25	29.32	R	5	R					2.6	R					
111	5	6	2010	4	34	3.9	39.28	29.26	R	7	R					2.6	R					
112	5	6	2010	5	16	10.2	37.32	28.22	R	5	R							2.6	R			
113	5	6	2010	6	55	36.8	37.92	29.01	R	7	R					2.7	R					
114	5	6	2010	7	40	46.5	37.94	32.20	R	5	R					2.3	R					
115	5	6	2010	8	44	25.6	37.21	28.19	R	15	R					2.7	R					
116	5	6	2010	9	10	31.6	37.22	27.89	R	17	R					2.5	R					
117	5	6	2010	9	55	38.3	39.25	29.30	R	6	R					2.8	R					
118	5	6	2010	10	57	4.7	37.89	29.50	R	8	R					2.7	R					
119	5	6	2010	12	11	21.1	40.13	29.47	R	9	R					2.7	R					
120	5	6	2010	12	47	7.1	35.56	45.16	R	5	R							3.7	R			

TÜRKİYE DEPREM ETKİNLİĞİ (2010 YILI HAZİRAN AYI)

No	Tarih - Date			Zaman - Time			Koordinat - Coordinate			Derinlik - Depth		Magnitüd - Magnitude										
	Gün	Ay	Yıl	Saat	Dak.	San.	Enlem-K	Boylam-D	Ref	Km.	Ref	Ms	Ref	Mb	Ref	Md	Ref	MI	Ref	Mw	Ref	
121	5	6	2010	13	12	17.4	38.39	37.86	R	14	R					2.8	R					
122	5	6	2010	13	18	58.3	38.58	40.88	R	18	R					2.7	R					
123	5	6	2010	13	24	55.6	39.25	29.74	R	5	R					2.6	R					
124	5	6	2010	13	25	32.4	37.48	31.10	R	3	R					2.6	R					
125	5	6	2010	14	56	0.7	37.20	28.14	R	9	R							2.4	R			
126	5	6	2010	15	5	51.3	39.92	29.15	R	8	R					2.7	R					
127	5	6	2010	17	23	43.5	40.76	31.49	R	7	R					2.8	R					
128	5	6	2010	18	15	55.5	40.40	42.22	R	5	R					3.1	R	3.2	R			
129	5	6	2010	23	3	15.8	36.96	27.75	R	5	R					2.9	R					
130	6	6	2010	0	22	39.0	39.12	29.02	R	5	R					2.8	R					
131	6	6	2010	0	47	27.1	38.20	26.74	R	14	R					2.7	R					
132	6	6	2010	1	26	44.5	39.18	24.50	R	13	R					2.9	R					
133	6	6	2010	1	29	59.6	35.90	26.97	R	19	R							3.5	R			
134	6	6	2010	1	44	53.6	37.15	29.06	R	12	R					3.0	R					
135	6	6	2010	5	39	0.7	37.22	28.38	R	2	R							2.4	R			
136	6	6	2010	6	41	46.3	37.24	28.23	R	12	R					2.8	R					
137	6	6	2010	7	2	12.0	38.95	25.95	R	14	R							4.1	R			
138	6	6	2010	7	11	15.2	36.42	27.76	R	13	R					2.7	R					
139	6	6	2010	8	2	39.2	40.66	27.49	R	6	R					2.6	R					
140	6	6	2010	8	23	58.9	41.34	35.19	R	8	R					2.6	R					

TÜRKİYE DEPREM ETKİNLİĞİ (2010 YILI HAZİRAN AYI)

No	Tarih - Date			Zaman - Time			Koordinat - Coordinate			Derinlik - Depth		Magnitüd - Magnitude									
	Gün	Ay	Yıl	Saat	Dak.	San.	Enlem-K	Boylam-D	Ref	Km.	Ref	Ms	Ref	Mb	Ref	Md	Ref	MI	Ref	Mw	Ref
141	6	6	2010	9	9	39.4	37.24	28.19	R	8	R					2.8	R				
142	6	6	2010	9	13	22.4	40.58	29.26	R	5	R					2.7	R				
143	6	6	2010	9	36	8.0	40.40	42.24	R	14	R					2.6	R				
144	6	6	2010	12	21	0.5	35.59	24.81	N	63	N			4.4	N						
145	6	6	2010	13	48	18.9	37.17	28.36	R	15	R					2.7	R				
146	6	6	2010	15	27	50.5	39.53	28.91	R	5	R					2.9	R				
147	6	6	2010	15	39	18.0	36.77	27.78	R	8	R					2.7	R				
148	6	6	2010	19	9	4.4	38.23	40.47	R	5	R							3.5	R		
149	6	6	2010	20	22	36.1	37.49	26.43	R	5	R					2.8	R				
150	6	6	2010	20	36	45.0	38.75	40.07	R	6	R					3.4	R				
151	7	6	2010	5	39	14.4	37.27	28.22	R	12	R					2.6	R				
152	7	6	2010	7	1	10.2	39.77	26.06	R	5	R					2.5	R				
153	7	6	2010	7	20	42.8	38.81	40.11	R	4	R					2.6	R				
154	7	6	2010	7	29	48.2	37.25	28.19	R	7	R					2.6	R				
155	7	6	2010	7	36	44.4	38.95	25.94	R	5	R					3.4	R				
156	7	6	2010	8	16	17.9	37.00	28.18	R	21	R					2.4	R				
157	7	6	2010	8	21	45.4	41.57	34.02	R	10	R					2.8	R				
158	7	6	2010	8	35	12.0	39.98	31.66	R	10	R					2.7	R				
159	7	6	2010	9	13	57.7	37.16	27.90	R	22	R					2.3	R				
160	7	6	2010	9	23	28.7	37.19	27.90	R	22	R					2.3	R				

TÜRKİYE DEPREM ETKİNLİĞİ (2010 YILI HAZİRAN AYI)

No	Tarih - Date			Zaman - Time			Koordinat - Coordinate			Derinlik - Depth		Magnitüd - Magnitude										
	Gün	Ay	Yıl	Saat	Dak.	San.	Enlem-K	Boylam-D	Ref	Km.	Ref	Ms	Ref	Mb	Ref	Md	Ref	MI	Ref	Mw	Ref	
161	7	6	2010	9	26	52.1	42.75	41.64	N	7	N			4.2	N							
162	7	6	2010	9	30	40.9	37.24	28.21	R	3	R					2.4	R					
163	7	6	2010	9	42	33.7	37.30	35.44	R	5	R							3.3	R			
164	7	6	2010	9	46	17.7	38.38	27.36	R	7	R					2.4	R					
165	7	6	2010	9	48	59.6	40.86	35.87	R	7	R					2.5	R					
166	7	6	2010	10	0	3.8	39.84	27.64	R	3	R					2.6	R					
167	7	6	2010	10	44	34.3	39.52	38.37	R	10	R					2.6	R					
168	7	6	2010	10	54	30.3	40.13	33.39	R	13	R					2.6	R					
169	7	6	2010	12	46	5.3	37.26	28.20	R	8	R					2.7	R					
170	7	6	2010	14	0	3.5	37.29	28.22	R	6	R					2.8	R					
171	7	6	2010	14	47	27.9	37.24	28.19	R	9	R					2.7	R					
172	7	6	2010	15	5	43.2	41.71	35.50	R	12	R					2.7	R					
173	7	6	2010	19	38	52.6	37.14	27.38	R	10	R					2.4	R					
174	7	6	2010	20	10	57.3	39.87	36.33	R	8	R					2.8	R					
175	7	6	2010	21	45	8.1	37.70	36.13	R	6	R							3.7	R			
176	7	6	2010	21	59	53.6	37.75	36.09	R	7	R					3.2	R	3.2	R			
177	7	6	2010	22	9	52.6	37.83	35.97	R	12	R					2.7	R					
178	7	6	2010	22	21	3.1	38.69	27.03	R	13	R					3.2	R					
179	7	6	2010	22	27	40.9	38.68	27.05	R	12	R					2.6	R					
180	7	6	2010	22	41	59.3	36.23	28.58	R	28	R					2.9	R					

TÜRKİYE DEPREM ETKİNLİĞİ (2010 YILI HAZİRAN AYI)

No	Tarih - Date			Zaman - Time			Koordinat - Coordinate			Derinlik - Depth		Magnitüd - Magnitude										
	Gün	Ay	Yıl	Saat	Dak.	San.	Enlem-K	Boylam-D	Ref	Km.	Ref	Ms	Ref	Mb	Ref	Md	Ref	MI	Ref	Mw	Ref	
181	7	6	2010	23	11	17.4	37.78	36.10	R	5	R					2.6	R					
182	8	6	2010	0	8	2.5	40.58	35.99	R	9	R					2.5	R					
183	8	6	2010	0	35	59.5	38.76	26.71	R	24	R					2.3	R					
184	8	6	2010	0	43	14.3	37.95	35.83	R	19	R					2.3	R					
185	8	6	2010	0	47	34.7	37.77	36.07	R	9	R					2.6	R					
186	8	6	2010	0	58	38.0	37.77	36.08	R	7	R					2.7	R					
187	8	6	2010	1	45	57.8	37.85	36.17	R	6	R					2.4	R					
188	8	6	2010	3	50	41.9	36.23	27.96	R	12	R					2.9	R					
189	8	6	2010	4	11	30.7	39.10	27.32	R	8	R					2.6	R					
190	8	6	2010	4	26	15.3	37.70	36.14	R	8	R							4.1	R			
191	8	6	2010	4	32	30.9	37.68	36.11	R	5	R					2.6	R					
192	8	6	2010	4	45	2.5	40.86	28.71	R	8	R					2.4	R					
193	8	6	2010	5	31	57.0	37.75	36.08	R	5	R					2.7	R					
194	8	6	2010	5	38	11.8	37.66	36.11	R	10	R					2.6	R					
195	8	6	2010	5	58	9.8	37.72	36.13	R	5	R					2.7	R					
196	8	6	2010	6	6	11.5	37.71	36.07	R	5	R					2.8	R					
197	8	6	2010	6	9	53.0	37.71	36.10	R	7	R					3.0	R					
198	8	6	2010	7	7	7.2	37.61	36.17	R	5	R					2.6	R					
199	8	6	2010	7	43	42.1	37.67	36.13	R	5	R							3.3	R			
200	8	6	2010	7	45	54.7	37.26	28.24	R	3	R					2.7	R					

TÜRKİYE DEPREM ETKİNLİĞİ (2010 YILI HAZİRAN AYI)

No	Tarih - Date			Zaman - Time			Koordinat - Coordinate			Derinlik - Depth		Magnitüd - Magnitude									
	Gün	Ay	Yıl	Saat	Dak.	San.	Enlem-K	Boylam-D	Ref	Km.	Ref	Ms	Ref	Mb	Ref	Md	Ref	MI	Ref	Mw	Ref
201	8	6	2010	8	52	46.8	37.21	28.20	R	12	R					2.5	R				
202	8	6	2010	8	52	57.1	37.84	32.55	R	5	R					2.3	R				
203	8	6	2010	9	10	19.9	37.75	37.78	R	2	R					2.8	R				
204	8	6	2010	9	16	31.1	37.73	36.11	R	3	R					2.9	R				
205	8	6	2010	9	25	59.7	41.66	34.88	R	5	R					2.8	R				
206	8	6	2010	9	55	41.1	37.52	38.73	R	8	R					2.8	R				
207	8	6	2010	10	2	44.1	37.42	26.85	R	6	R					2.8	R				
208	8	6	2010	11	27	0.4	38.60	37.92	R	5	R					2.7	R				
209	8	6	2010	12	3	15.6	40.20	25.29	R	6	R					2.7	R				
210	8	6	2010	13	53	59.0	37.80	32.20	R	6	R					2.4	R				
211	8	6	2010	14	6	56.7	37.67	36.08	R	5	R					3.0	R				
212	8	6	2010	14	13	2.8	37.73	36.15	R	9	R					3.0	R				
213	8	6	2010	14	38	38.8	37.69	36.15	R	8	R							3.4	R		
214	8	6	2010	15	12	19.6	37.40	36.17	R	22	R					2.3	R				
215	8	6	2010	16	55	13.4	37.72	36.13	R	5	R					2.8	R				
216	8	6	2010	17	0	34.4	37.58	36.05	R	6	R					2.6	R				
217	8	6	2010	17	39	33.3	36.33	28.32	R	26	R					2.6	R				
218	8	6	2010	18	1	50.4	37.69	36.15	R	8	R					2.6	R				
219	8	6	2010	19	43	15.6	36.57	27.88	R	14	R					3.3	R	3.5	R		
220	8	6	2010	19	53	16.2	38.79	38.81	R	8	R					2.8	R				

TÜRKİYE DEPREM ETKİNLİĞİ (2010 YILI HAZİRAN AYI)

No	Tarih - Date			Zaman - Time			Koordinat - Coordinate			Derinlik - Depth		Magnitüd - Magnitude									
	Gün	Ay	Yıl	Saat	Dak.	San.	Enlem-K	Boylam-D	Ref	Km.	Ref	Ms	Ref	Mb	Ref	Md	Ref	MI	Ref	Mw	Ref
221	8	6	2010	21	3	56.9	34.80	26.46	R	3	R							3.5	R		
222	8	6	2010	21	12	2.6	38.78	38.77	R	5	R					2.5	R				
223	8	6	2010	22	5	36.3	40.44	29.07	R	6	R					2.6	R				
224	8	6	2010	22	11	24.4	40.43	29.06	R	9	R					2.4	R				
225	9	6	2010	0	24	11.2	37.05	28.11	R	27	R					2.4	R				
226	9	6	2010	1	46	39.0	38.27	26.58	R	7	R					2.7	R				
227	9	6	2010	2	28	29.2	36.55	28.00	R	10	R					2.5	R				
228	9	6	2010	2	54	31.4	37.49	36.20	R	25	R					2.5	R				
229	9	6	2010	3	35	23.4	39.49	28.92	R	3	R					2.6	R				
230	9	6	2010	5	14	6.1	36.90	27.50	R	24	R					2.2	R				
231	9	6	2010	6	56	29.5	37.70	36.16	R	3	R					2.9	R				
232	9	6	2010	7	8	37.2	37.57	41.90	R	6	R					2.7	R				
233	9	6	2010	7	21	18.4	36.25	31.61	R	19	R					2.8	R				
234	9	6	2010	7	35	58.5	39.91	38.70	R	18	R					2.8	R				
235	9	6	2010	8	2	54.9	38.12	26.60	R	3	R					2.7	R				
236	9	6	2010	8	48	1.3	37.26	28.19	R	4	R					2.7	R				
237	9	6	2010	9	3	12.7	39.30	27.73	R	5	R					2.7	R				
238	9	6	2010	9	6	43.7	37.80	32.11	R	8	R					2.6	R				
239	9	6	2010	9	7	58.1	37.25	28.24	R	3	R					2.6	R				
240	9	6	2010	9	41	59.3	38.72	38.18	R	4	R					2.8	R				

TÜRKİYE DEPREM ETKİNLİĞİ (2010 YILI HAZİRAN AYI)

No	Tarih - Date			Zaman - Time			Koordinat - Coordinate			Derinlik - Depth		Magnitüd - Magnitude									
	Gün	Ay	Yıl	Saat	Dak.	San.	Enlem-K	Boylam-D	Ref	Km.	Ref	Ms	Ref	Mb	Ref	Md	Ref	MI	Ref	Mw	Ref
241	9	6	2010	10	6	18.4	39.08	38.55	R	5	R					2.7	R				
242	9	6	2010	10	29	24.5	41.65	34.88	R	4	R					2.6	R				
243	9	6	2010	10	36	50.8	38.89	31.93	R	16	R					3.1	R				
244	9	6	2010	11	11	7.8	38.06	38.39	R	12	R					2.5	R				
245	9	6	2010	12	13	33.8	37.24	28.18	R	4	R					2.8	R				
246	9	6	2010	12	14	39.2	40.25	35.03	R	6	R					2.4	R				
247	9	6	2010	13	56	19.2	39.47	31.42	R	5	R					2.9	R				
248	9	6	2010	14	51	26.3	37.24	28.19	R	7	R					2.8	R				
249	9	6	2010	16	6	56.1	39.29	29.09	R	5	R							3.3	R		
250	9	6	2010	16	56	13.7	38.60	30.33	R	7	R					2.8	R				
251	9	6	2010	16	57	36.1	40.71	27.39	R	15	R					2.8	R				
252	9	6	2010	17	8	21.3	37.21	36.12	R	13	R					2.5	R				
253	9	6	2010	17	14	26.0	40.60	26.96	R	6	R					2.5	R				
254	9	6	2010	17	19	52.4	38.35	40.11	R	5	R					2.6	R				
255	9	6	2010	17	25	49.8	43.51	45.54	N	7	N			4.4	N						
256	9	6	2010	17	29	34.5	43.33	45.53	N	10	N			4.4	N						
257	9	6	2010	17	48	41.9	40.81	27.74	R	8	R					2.6	R				
258	9	6	2010	18	27	45.2	39.98	28.09	R	9	R					2.6	R				
259	9	6	2010	18	30	26.9	35.15	27.18	N	17	N							4.1	R		
260	9	6	2010	22	11	53.8	39.26	29.33	R	8	R					2.5	R				

TÜRKİYE DEPREM ETKİNLİĞİ (2010 YILI HAZİRAN AYI)

No	Tarih - Date			Zaman - Time			Koordinat - Coordinate			Derinlik - Depth		Magnitüd - Magnitude									
	Gün	Ay	Yıl	Saat	Dak.	San.	Enlem-K	Boylam-D	Ref	Km.	Ref	Ms	Ref	Mb	Ref	Md	Ref	MI	Ref	Mw	Ref
261	10	6	2010	0	23	18.5	37.75	30.16	R	10	R					2.5	R				
262	10	6	2010	1	55	13.1	39.19	28.20	R	5	R					2.9	R				
263	10	6	2010	2	13	1.9	38.70	38.02	R	6	R					2.3	R				
264	10	6	2010	2	57	3.8	37.83	32.21	R	2	R							3.5	R		
265	10	6	2010	3	38	13.4	38.73	40.06	R	12	R					2.8	R				
266	10	6	2010	5	17	39.8	39.19	28.19	R	8	R					2.9	R				
267	10	6	2010	5	59	36.5	35.62	27.56	R	12	R							3.1	R		
268	10	6	2010	8	52	41.9	37.23	28.22	R	5	R					2.5	R				
269	10	6	2010	9	40	6.4	38.14	26.87	R	7	R					2.9	R				
270	10	6	2010	9	52	17.3	36.55	25.59	R	5	R							3.0	R		
271	10	6	2010	10	2	37.3	39.88	33.01	R	7	R					2.6	R				
272	10	6	2010	10	9	7.1	40.62	35.12	R	16	R					2.6	R				
273	10	6	2010	10	10	10.8	39.27	27.57	R	11	R					2.7	R				
274	10	6	2010	10	44	21.6	38.06	26.41	R	5	R					2.7	R				
275	10	6	2010	11	24	28.3	37.36	39.08	R	15	R					2.7	R				
276	10	6	2010	11	42	16.8	37.73	32.50	R	7	R					2.4	R				
277	10	6	2010	11	52	55.5	37.09	27.90	R	25	R					2.4	R				
278	10	6	2010	12	14	29.3	38.43	29.12	R	11	R					2.6	R				
279	10	6	2010	13	7	48.8	37.27	28.21	R	4	R					2.7	R				
280	10	6	2010	13	28	20.8	39.54	31.02	R	8	R					2.3	R				

TÜRKİYE DEPREM ETKİNLİĞİ (2010 YILI HAZİRAN AYI)

No	Tarih - Date			Zaman - Time			Koordinat - Coordinate			Derinlik - Depth		Magnitüd - Magnitude									
	Gün	Ay	Yıl	Saat	Dak.	San.	Enlem-K	Boylam-D	Ref	Km.	Ref	Ms	Ref	Mb	Ref	Md	Ref	MI	Ref	Mw	Ref
281	10	6	2010	14	38	30.0	40.81	27.54	R	11	R					2.5	R				
282	10	6	2010	14	41	12.2	38.36	37.02	R	5	R					2.7	R				
283	10	6	2010	14	46	22.1	37.24	28.21	R	8	R					2.8	R				
284	10	6	2010	15	12	13.8	39.96	33.57	R	11	R					3.0	R				
285	10	6	2010	15	50	36.0	40.47	41.47	R	18	R					2.6	R				
286	10	6	2010	16	3	6.5	35.14	27.25	R	18	R					3.1	R				
287	10	6	2010	16	3	22.8	40.39	41.84	R	6	R					2.5	R				
288	10	6	2010	19	56	5.0	37.60	42.89	R	27	R					2.3	R				
289	10	6	2010	20	30	58.0	38.44	37.81	R	5	R					2.4	R				
290	11	6	2010	0	0	36.2	38.20	28.57	R	2	R					2.4	R				
291	11	6	2010	0	10	22.9	40.94	39.77	R	5	R					2.3	R				
292	11	6	2010	1	18	25.5	36.20	27.65	R	17	R					2.4	R				
293	11	6	2010	1	32	40.9	41.01	31.18	R	5	R					2.7	R				
294	11	6	2010	2	49	26.9	37.98	28.94	R	5	R					2.7	R				
295	11	6	2010	4	3	49.5	38.74	26.82	R	12	R					2.6	R				
296	11	6	2010	4	45	54.1	35.32	27.24	R	11	R					2.9	R				
297	11	6	2010	6	33	8.0	39.29	27.95	R	7	R					2.7	R				
298	11	6	2010	9	1	26.7	36.92	27.25	R	7	R					2.4	R				
299	11	6	2010	9	45	38.4	37.24	28.19	R	3	R					2.8	R				
300	11	6	2010	10	6	46.2	37.26	28.21	R	17	R					2.9	R				

TÜRKİYE DEPREM ETKİNLİĞİ (2010 YILI HAZİRAN AYI)

No	Tarih - Date			Zaman - Time			Koordinat - Coordinate			Derinlik - Depth		Magnitüd - Magnitude									
	Gün	Ay	Yıl	Saat	Dak.	San.	Enlem-K	Boylam-D	Ref	Km.	Ref	Ms	Ref	Mb	Ref	Md	Ref	MI	Ref	Mw	Ref
301	11	6	2010	10	38	23.2	39.31	44.48	R	3	R					2.5	R				
302	11	6	2010	10	56	44.4	40.43	28.94	R	14	R							4.2	R		
303	11	6	2010	11	4	17.0	38.44	26.58	R	9	R					2.3	R				
304	11	6	2010	11	13	32.6	38.44	26.39	R	22	R					2.4	R				
305	11	6	2010	11	29	27.8	37.01	28.88	R	10	R					2.5	R				
306	11	6	2010	11	41	31.4	39.24	26.25	R	11	R					2.8	R				
307	11	6	2010	12	29	36.0	37.38	42.52	R	5	R					2.8	R				
308	11	6	2010	13	45	2.6	39.66	29.30	R	18	R					2.3	R				
309	11	6	2010	13	54	32.8	37.28	42.68	R	5	R					2.8	R				
310	11	6	2010	14	20	48.0	39.68	30.10	R	10	R					2.4	R				
311	11	6	2010	14	28	52.9	41.03	36.12	R	5	R					2.3	R				
312	11	6	2010	14	35	43.2	38.45	29.11	R	18	R					2.6	R				
313	11	6	2010	14	37	42.0	38.41	29.06	R	11	R					2.5	R				
314	11	6	2010	14	56	41.0	37.53	36.14	R	9	R					2.6	R				
315	11	6	2010	14	59	13.1	39.49	28.64	R	11	R					2.5	R				
316	11	6	2010	15	0	29.5	39.25	27.84	R	8	R					2.6	R				
317	11	6	2010	15	1	30.8	39.79	26.05	R	8	R					2.6	R				
318	11	6	2010	16	32	15.2	35.96	27.09	R	18	R					2.8	R				
319	11	6	2010	16	34	18.2	35.88	27.23	R	3	R					2.7	R				
320	11	6	2010	16	43	2.8	38.33	26.60	R	5	R					2.9	R				

TÜRKİYE DEPREM ETKİNLİĞİ (2010 YILI HAZİRAN AYI)

No	Tarih - Date			Zaman - Time			Koordinat - Coordinate			Derinlik - Depth		Magnitüd - Magnitude									
	Gün	Ay	Yıl	Saat	Dak.	San.	Enlem-K	Boylam-D	Ref	Km.	Ref	Ms	Ref	Mb	Ref	Md	Ref	MI	Ref	Mw	Ref
321	11	6	2010	17	49	28.7	35.80	27.19	R	6	R					3.1	R				
322	11	6	2010	17	53	23.6	38.71	38.04	R	5	R					2.9	R				
323	11	6	2010	18	23	3.0	38.34	26.60	R	9	R					2.6	R				
324	11	6	2010	19	3	35.0	39.77	27.91	R	5	R					2.7	R				
325	11	6	2010	19	8	12.9	39.77	27.90	R	11	R					2.3	R				
326	11	6	2010	19	28	36.5	39.77	27.89	R	14	R					2.3	R				
327	11	6	2010	19	38	31.5	35.94	27.19	R	14	R					3.1	R				
328	11	6	2010	19	46	18.1	35.93	27.17	R	21	R					2.8	R				
329	11	6	2010	20	13	36.0	35.90	27.47	R	5	R					2.8	R				
330	11	6	2010	20	16	51.9	37.84	27.60	R	6	R					2.9	R				
331	11	6	2010	20	29	58.6	39.78	26.03	R	5	R					2.7	R				
332	11	6	2010	22	39	56.8	36.46	40.87	R	5	R					3.0	R				
333	11	6	2010	22	54	29.8	36.15	27.37	R	9	R					2.8	R				
334	11	6	2010	23	18	11.5	39.40	36.94	R	9	R					2.9	R				
335	11	6	2010	23	29	47.7	36.60	27.29	R	4	R					2.5	R				
336	11	6	2010	23	45	42.1	39.12	29.14	R	5	R					3.0	R				
337	11	6	2010	23	52	25.0	39.21	40.17	R	8	R					2.7	R				
338	12	6	2010	0	0	26.3	39.15	29.10	R	8	R					2.4	R				
339	12	6	2010	0	14	46.6	35.85	27.10	R	8	R					3.0	R				
340	12	6	2010	0	26	36.6	36.96	34.76	R	5	R					2.6	R				

TÜRKİYE DEPREM ETKİNLİĞİ (2010 YILI HAZİRAN AYI)

No	Tarih - Date			Zaman - Time			Koordinat - Coordinate			Derinlik - Depth		Magnitüd - Magnitude									
	Gün	Ay	Yıl	Saat	Dak.	San.	Enlem-K	Boylam-D	Ref	Km.	Ref	Ms	Ref	Mb	Ref	Md	Ref	MI	Ref	Mw	Ref
341	12	6	2010	0	32	39.8	39.77	26.08	R	8	R					2.6	R				
342	12	6	2010	1	40	54.2	37.68	30.07	R	5	R					3.0	R				
343	12	6	2010	1	50	11.5	36.18	27.37	R	17	R					2.7	R				
344	12	6	2010	2	32	45.4	37.06	28.57	R	4	R					2.4	R				
345	12	6	2010	2	47	53.5	36.50	27.23	R	13	R					2.4	R				
346	12	6	2010	3	28	3.2	35.93	27.12	R	16	R					3.0	R				
347	12	6	2010	4	22	39.0	38.72	27.32	R	8	R					2.4	R				
348	12	6	2010	4	47	59.6	38.82	26.85	R	6	R					3.1	R				
349	12	6	2010	5	20	14.6	36.87	28.05	R	6	R					2.5	R				
350	12	6	2010	5	40	19.7	38.88	25.67	R	12	R					2.9	R				
351	12	6	2010	6	25	29.0	39.18	41.27	R	13	R					2.9	R				
352	12	6	2010	6	25	56.9	35.55	28.64	R	7	R					3.0	R				
353	12	6	2010	6	42	30.8	38.68	38.01	R	7	R					2.4	R				
354	12	6	2010	7	9	34.9	39.21	29.36	R	5	R					2.5	R				
355	12	6	2010	7	25	3.8	40.06	28.03	R	15	R					2.5	R				
356	12	6	2010	7	53	41.9	39.68	38.68	R	11	R					2.9	R				
357	12	6	2010	8	20	55.9	39.24	29.37	R	7	R					2.3	R				
358	12	6	2010	8	27	10.6	40.22	30.02	R	6	R					2.6	R				
359	12	6	2010	8	41	32.3	37.29	28.23	R	4	R					2.7	R				
360	12	6	2010	8	56	22.8	37.94	32.45	R	3	R					2.3	R				

TÜRKİYE DEPREM ETKİNLİĞİ (2010 YILI HAZİRAN AYI)

No	Tarih - Date			Zaman - Time			Koordinat - Coordinate			Derinlik - Depth		Magnitüd - Magnitude									
	Gün	Ay	Yıl	Saat	Dak.	San.	Enlem-K	Boylam-D	Ref	Km.	Ref	Ms	Ref	Mb	Ref	Md	Ref	MI	Ref	Mw	Ref
361	12	6	2010	11	11	46.0	40.02	37.94	R	9	R					3.1	R				
362	12	6	2010	11	37	29.5	42.22	43.11	R	12	R							3.6	R		
363	12	6	2010	11	40	7.5	37.11	36.11	R	5	R					2.5	R				
364	12	6	2010	11	40	47.0	36.85	29.31	R	5	R					2.9	R				
365	12	6	2010	13	2	28.3	36.99	27.93	R	5	R					2.5	R				
366	12	6	2010	13	10	56.2	37.23	28.21	R	5	R					2.7	R				
367	12	6	2010	13	13	12.8	37.24	28.24	R	5	R					2.6	R				
368	12	6	2010	13	19	16.2	37.14	27.90	R	17	R					2.6	R				
369	12	6	2010	14	35	24.3	40.73	26.33	R	3	R					2.2	R				
370	12	6	2010	14	49	56.9	37.44	28.10	R	6	R					2.3	R				
371	12	6	2010	14	58	27.4	39.29	27.72	R	9	R					2.6	R				
372	12	6	2010	15	7	2.3	37.93	34.73	R	8	R					2.6	R				
373	12	6	2010	15	9	9.3	40.26	30.01	R	9	R					2.4	R				
374	12	6	2010	15	44	54.2	40.04	28.77	R	6	R					2.7	R				
375	12	6	2010	15	46	57.2	38.17	30.40	R	7	R					2.8	R				
376	12	6	2010	16	0	31.0	35.93	27.17	R	9	R							3.1	R		
377	12	6	2010	16	4	26.0	40.17	25.56	R	8	R					2.5	R				
378	12	6	2010	16	5	58.7	35.92	27.17	R	9	R							3.1	R		
379	12	6	2010	16	8	44.7	35.92	27.10	R	10	R					2.8	R				
380	12	6	2010	16	37	4.5	35.94	27.12	R	9	R							3.3	R		

TÜRKİYE DEPREM ETKİNLİĞİ (2010 YILI HAZİRAN AYI)

No	Tarih - Date			Zaman - Time			Koordinat - Coordinate			Derinlik - Depth		Magnitüd - Magnitude									
	Gün	Ay	Yıl	Saat	Dak.	San.	Enlem-K	Boylam-D	Ref	Km.	Ref	Ms	Ref	Mb	Ref	Md	Ref	MI	Ref	Mw	Ref
381	12	6	2010	16	40	27.7	40.29	25.28	R	9	R					2.9	R				
382	12	6	2010	17	16	36.3	38.01	27.38	R	5	R					2.8	R				
383	12	6	2010	17	39	37.0	40.20	25.30	R	8	R					2.6	R				
384	12	6	2010	19	4	35.8	40.87	31.02	R	6	R					2.7	R				
385	12	6	2010	19	48	38.4	39.32	29.39	R	6	R					2.3	R				
386	12	6	2010	20	25	40.4	40.25	25.57	R	5	R					3.0	R				
387	12	6	2010	20	51	52.5	35.81	26.55	R	8	R					3.6	R				
388	12	6	2010	20	58	58.0	37.67	36.17	R	8	R							3.9	R		
389	12	6	2010	21	5	38.9	37.63	36.19	R	8	R							3.2	R		
390	12	6	2010	21	36	22.5	40.59	42.17	R	5	R					2.6	R				
391	12	6	2010	21	45	4.3	38.48	39.22	R	8	R					2.9	R				
392	12	6	2010	21	54	5.5	38.49	39.27	R	8	R					2.8	R				
393	12	6	2010	21	54	56.3	38.53	39.25	R	5	R					2.8	R				
394	12	6	2010	22	4	11.8	38.47	39.31	R	21	R					2.3	R				
395	12	6	2010	22	41	39.6	40.22	25.43	R	10	R					2.9	R				
396	12	6	2010	22	47	43.9	39.24	26.33	R	8	R					2.8	R				
397	12	6	2010	22	47	57.8	37.63	36.13	R	5	R					2.8	R				
398	12	6	2010	23	0	9.0	38.49	39.27	R	7	R					3.0	R				
399	12	6	2010	23	2	13.9	39.62	27.10	R	5	R					2.6	R				
400	12	6	2010	23	31	45.0	37.64	36.14	R	3	R					2.7	R				

TÜRKİYE DEPREM ETKİNLİĞİ (2010 YILI HAZİRAN AYI)

No	Tarih - Date			Zaman - Time			Koordinat - Coordinate			Derinlik - Depth		Magnitüd - Magnitude									
	Gün	Ay	Yıl	Saat	Dak.	San.	Enlem-K	Boylam-D	Ref	Km.	Ref	Ms	Ref	Mb	Ref	Md	Ref	MI	Ref	Mw	Ref
401	13	6	2010	0	44	44.3	39.66	39.78	R	5	R					2.7	R				
402	13	6	2010	0	44	51.1	35.19	25.54	R	4	R							3.6	R		
403	13	6	2010	1	15	47.7	38.49	39.25	R	5	R					2.6	R				
404	13	6	2010	1	19	10.3	37.72	43.84	R	5	R					2.8	R				
405	13	6	2010	1	42	24.2	39.04	29.88	R	4	R					2.7	R				
406	13	6	2010	1	52	45.9	38.88	31.39	R	5	R					2.6	R				
407	13	6	2010	2	11	10.8	38.47	25.56	R	10	R					3.0	R				
408	13	6	2010	2	13	25.2	39.20	29.12	R	5	R					3.1	R				
409	13	6	2010	7	49	35.1	40.04	39.56	R	12	R					2.7	R				
410	13	6	2010	8	22	21.9	38.38	39.28	R	16	R					2.8	R				
411	13	6	2010	8	45	4.5	37.27	28.23	R	5	R					2.5	R				
412	13	6	2010	8	50	55.7	37.20	28.16	R	5	R					2.6	R				
413	13	6	2010	9	7	41.6	39.31	27.65	R	14	R					3.0	R				
414	13	6	2010	9	27	7.4	39.31	27.53	R	15	R					2.9	R				
415	13	6	2010	11	19	18.4	38.18	37.26	R	5	R					2.6	R				
416	13	6	2010	12	16	26.1	39.29	28.05	R	8	R					2.4	R				
417	13	6	2010	12	31	34.6	37.27	28.23	R	2	R					2.4	R				
418	13	6	2010	13	29	59.9	37.37	27.37	R	5	R					2.4	R				
419	13	6	2010	14	48	21.4	37.25	28.20	R	5	R					2.4	R				
420	13	6	2010	14	50	7.6	37.31	28.27	R	7	R					2.6	R				

TÜRKİYE DEPREM ETKİNLİĞİ (2010 YILI HAZİRAN AYI)

No	Tarih - Date			Zaman - Time			Koordinat - Coordinate			Derinlik - Depth		Magnitüd - Magnitude									
	Gün	Ay	Yıl	Saat	Dak.	San.	Enlem-K	Boylam-D	Ref	Km.	Ref	Ms	Ref	Mb	Ref	Md	Ref	MI	Ref	Mw	Ref
421	13	6	2010	14	52	50.0	38.59	38.89	R	5	R					2.5	R				
422	13	6	2010	15	48	21.2	37.92	33.02	R	9	R					2.9	R				
423	13	6	2010	15	58	33.9	35.61	27.14	R	5	R					3.0	R				
424	13	6	2010	15	58	52.3	39.53	28.95	R	14	R					2.4	R				
425	13	6	2010	16	4	30.9	35.63	26.99	R	5	R					3.0	R				
426	13	6	2010	16	11	11.0	35.51	27.09	R	21	R					2.9	R				
427	13	6	2010	16	37	47.7	39.76	28.71	R	7	R					2.4	R				
428	13	6	2010	18	4	45.0	36.41	27.58	R	11	R					2.4	R				
429	13	6	2010	18	42	42.2	38.82	40.06	R	16	R					2.6	R				
430	13	6	2010	19	18	9.5	39.14	30.56	R	5	R					2.5	R				
431	13	6	2010	19	43	55.2	39.97	40.04	R	9	R					2.9	R				
432	13	6	2010	21	29	9.9	40.54	27.52	R	5	R					2.7	R				
433	13	6	2010	21	29	34.7	36.88	27.60	R	4	R					2.6	R				
434	13	6	2010	21	35	15.0	40.23	27.03	R	7	R					2.9	R				
435	14	6	2010	0	3	51.9	37.50	26.92	R	21	R					2.5	R				
436	14	6	2010	0	10	30.6	37.10	28.05	R	18	R					2.4	R				
437	14	6	2010	0	19	23.8	37.10	28.03	R	7	R					2.6	R				
438	14	6	2010	0	36	18.0	38.70	31.29	R	9	R					2.7	R				
439	14	6	2010	0	37	15.0	36.28	35.66	R	5	R					2.6	R				
440	14	6	2010	1	25	34.4	35.20	27.01	R	5	R							3.5	R		

TÜRKİYE DEPREM ETKİNLİĞİ (2010 YILI HAZİRAN AYI)

No	Tarih - Date			Zaman - Time			Koordinat - Coordinate			Derinlik - Depth		Magnitüd - Magnitude									
	Gün	Ay	Yıl	Saat	Dak.	San.	Enlem-K	Boylam-D	Ref	Km.	Ref	Ms	Ref	Mb	Ref	Md	Ref	MI	Ref	Mw	Ref
441	14	6	2010	1	52	59.5	37.49	30.46	R	3	R					2.9	R				
442	14	6	2010	2	44	19.8	38.47	39.24	R	8	R					2.5	R				
443	14	6	2010	3	10	56.0	38.44	42.93	R	6	R					2.9	R				
444	14	6	2010	4	46	30.7	39.41	27.88	R	3	R					3.0	R				
445	14	6	2010	4	58	57.2	37.23	28.19	R	7	R					2.5	R				
446	14	6	2010	6	10	32.9	37.28	28.26	R	2	R					2.6	R				
447	14	6	2010	6	25	50.6	37.24	28.20	R	9	R					2.6	R				
448	14	6	2010	6	30	3.8	38.83	26.80	R	7	R					2.6	R				
449	14	6	2010	6	36	15.1	41.13	34.47	R	6	R					2.7	R				
450	14	6	2010	6	52	37.8	38.93	28.08	R	12	R					2.8	R				
451	14	6	2010	7	2	0.2	38.96	40.49	R	7	R					2.9	R				
452	14	6	2010	7	4	28.2	37.00	28.59	R	13	R					2.4	R				
453	14	6	2010	8	0	8.5	38.68	40.11	R	6	R					2.9	R				
454	14	6	2010	8	57	26.0	39.27	27.73	R	6	R					2.5	R				
455	14	6	2010	12	52	16.0	40.35	37.64	R	5	R					2.4	R				
456	14	6	2010	13	13	27.2	40.26	30.01	R	23	R					2.4	R				
457	14	6	2010	13	28	55.2	37.63	34.64	R	7	R					2.8	R				
458	14	6	2010	14	51	33.5	38.69	35.70	R	4	R					3.4	R				
459	14	6	2010	15	16	1.7	38.73	38.09	R	2	R					2.7	R				
460	14	6	2010	15	34	35.7	38.20	37.23	R	9	R					2.8	R				

TÜRKİYE DEPREM ETKİNLİĞİ (2010 YILI HAZİRAN AYI)

No	Tarih - Date			Zaman - Time			Koordinat - Coordinate			Derinlik - Depth		Magnitüd - Magnitude									
	Gün	Ay	Yıl	Saat	Dak.	San.	Enlem-K	Boylam-D	Ref	Km.	Ref	Ms	Ref	Mb	Ref	Md	Ref	MI	Ref	Mw	Ref
461	14	6	2010	16	22	57.2	40.09	27.27	R	8	R					2.9	R				
462	14	6	2010	16	48	38.9	39.59	28.20	R	13	R					2.4	R				
463	14	6	2010	19	44	37.6	39.12	29.28	R	16	R					2.6	R				
464	14	6	2010	20	15	15.6	39.64	25.82	R	15	R					2.7	R				
465	14	6	2010	20	43	11.6	39.95	43.51	R	5	R					2.9	R				
466	14	6	2010	21	18	4.4	39.41	25.51	R	8	R					2.8	R				
467	14	6	2010	21	48	11.6	37.18	41.81	R	4	R					3.3	R				
468	14	6	2010	22	53	49.3	37.42	26.83	R	6	R					2.8	R				
469	15	6	2010	0	3	51.8	37.97	42.36	R	17	R					2.7	R				
470	15	6	2010	1	21	27.7	39.33	39.94	R	5	R					2.6	R				
471	15	6	2010	1	41	24.5	40.17	32.84	R	8	R					2.6	R				
472	15	6	2010	2	53	17.8	40.67	27.66	R	7	R					2.6	R				
473	15	6	2010	3	23	12.6	38.45	41.98	R	5	R					3.0	R				
474	15	6	2010	3	30	44.9	40.21	40.93	R	5	R					2.7	R				
475	15	6	2010	3	50	51.5	39.29	27.83	R	5	R					2.7	R				
476	15	6	2010	4	0	30.0	37.10	41.76	R	6	R					2.9	R				
477	15	6	2010	5	35	52.8	37.24	28.21	R	9	R					2.7	R				
478	15	6	2010	10	45	40.9	38.00	29.31	R	8	R					2.9	R				
479	15	6	2010	11	38	44.0	40.36	27.01	R	12	R					2.2	R				
480	15	6	2010	12	5	48.9	37.27	28.17	R	5	R					2.8	R				

TÜRKİYE DEPREM ETKİNLİĞİ (2010 YILI HAZİRAN AYI)

No	Tarih - Date			Zaman - Time			Koordinat - Coordinate			Derinlik - Depth		Magnitüd - Magnitude										
	Gün	Ay	Yıl	Saat	Dak.	San.	Enlem-K	Boylam-D	Ref	Km.	Ref	Ms	Ref	Mb	Ref	Md	Ref	MI	Ref	Mw	Ref	
481	15	6	2010	14	49	51.3	39.35	41.92	R	15	R					2.6	R					
482	15	6	2010	15	29	9.0	39.44	41.95	R	23	R					2.6	R					
483	15	6	2010	15	32	7.6	39.48	25.96	R	8	R					2.8	R					
484	15	6	2010	16	5	17.1	40.21	25.29	R	5	R					2.9	R					
485	15	6	2010	17	25	20.4	40.04	36.47	R	5	R					2.9	R					
486	15	6	2010	17	43	50.3	38.75	40.04	R	5	R							3.4	R			
487	15	6	2010	18	56	50.9	42.39	43.67	R	24	R					2.9	R					
488	15	6	2010	21	39	5.0	37.72	36.08	R	5	R					3.2	R					
489	15	6	2010	23	29	37.6	39.42	26.06	R	9	R					2.9	R					
490	15	6	2010	23	36	16.9	39.45	25.96	R	5	R					2.9	R					
491	15	6	2010	23	58	34.4	36.08	27.99	R	19	R					3.0	R					
492	16	6	2010	1	1	59.7	38.81	26.81	R	16	R							3.5	R			
493	16	6	2010	1	52	30.2	38.79	25.95	R	11	R					3.1	R					
494	16	6	2010	1	53	27.8	38.78	26.05	R	5	R					2.8	R					
495	16	6	2010	3	1	40.2	35.93	26.76	R	26	R					2.8	R					
496	16	6	2010	3	41	22.3	40.61	27.44	R	7	R					2.8	R					
497	16	6	2010	4	56	41.4	38.72	26.45	R	8	R							3.4	R			
498	16	6	2010	6	12	47.3	39.37	28.76	R	11	R					2.6	R					
499	16	6	2010	6	55	17.8	37.31	28.27	R	4	R					2.5	R					
500	16	6	2010	8	57	2.5	37.22	28.17	R	4	R					2.6	R					

TÜRKİYE DEPREM ETKİNLİĞİ (2010 YILI HAZİRAN AYI)

No	Tarih - Date			Zaman - Time			Koordinat - Coordinate			Derinlik - Depth		Magnitüd - Magnitude									
	Gün	Ay	Yıl	Saat	Dak.	San.	Enlem-K	Boylam-D	Ref	Km.	Ref	Ms	Ref	Mb	Ref	Md	Ref	MI	Ref	Mw	Ref
501	16	6	2010	9	8	14.1	37.26	28.19	R	8	R					2.7	R				
502	16	6	2010	11	9	46.6	35.39	33.40	R	5	R					3.0	R				
503	16	6	2010	12	25	12.9	38.09	32.61	R	12	R					2.7	R				
504	16	6	2010	12	45	28.6	38.89	27.85	R	2	R					2.6	R				
505	16	6	2010	13	24	28.5	37.22	28.30	R	5	R					2.7	R				
506	16	6	2010	13	33	28.7	38.43	37.69	R	14	R					2.6	R				
507	16	6	2010	13	55	45.1	39.23	31.98	R	5	R					2.9	R				
508	16	6	2010	14	19	55.7	36.99	39.33	R	5	R					2.9	R				
509	16	6	2010	14	35	23.0	38.77	40.05	R	5	R					2.7	R				
510	16	6	2010	14	49	40.9	38.54	40.52	R	5	R					3.2	R	3.2	R		
511	16	6	2010	15	0	16.7	39.23	27.91	R	10	R					2.6	R				
512	16	6	2010	15	9	49.1	37.25	28.22	R	3	R					2.5	R				
513	16	6	2010	15	29	59.8	38.53	37.41	R	5	R					2.8	R				
514	16	6	2010	15	47	2.2	40.31	28.81	R	5	R					2.6	R				
515	16	6	2010	17	10	6.0	37.09	35.23	R	30	R					2.8	R				
516	16	6	2010	18	0	21.2	38.98	24.02	R	13	R					3.4	R				
517	16	6	2010	21	6	43.8	37.38	36.12	R	5	R					2.5	R				
518	16	6	2010	22	31	2.2	39.15	29.09	R	6	R					2.9	R				
519	16	6	2010	23	42	17.5	38.86	24.36	R	5	R					3.4	R				
520	16	6	2010	23	54	2.9	38.86	31.47	R	20	R					2.7	R				

TÜRKİYE DEPREM ETKİNLİĞİ (2010 YILI HAZİRAN AYI)

No	Tarih - Date			Zaman - Time			Koordinat - Coordinate			Derinlik - Depth		Magnitüd - Magnitude									
	Gün	Ay	Yıl	Saat	Dak.	San.	Enlem-K	Boylam-D	Ref	Km.	Ref	Ms	Ref	Mb	Ref	Md	Ref	MI	Ref	Mw	Ref
521	17	6	2010	3	28	10.2	38.55	44.62	R	5	R							3.2	R		
522	17	6	2010	5	37	4.4	37.52	26.85	R	11	R					2.6	R				
523	17	6	2010	6	9	6.1	37.25	28.19	R	5	R					2.7	R				
524	17	6	2010	6	46	14.5	37.14	28.14	R	12	R					2.8	R				
525	17	6	2010	6	47	50.9	34.12	33.78	R	29	R					3.2	R				
526	17	6	2010	7	4	58.2	40.36	29.20	R	18	R					2.5	R				
527	17	6	2010	7	24	28.1	39.36	25.44	R	8	R							3.2	R		
528	17	6	2010	7	57	52.9	38.77	29.28	R	10	R					2.7	R				
529	17	6	2010	8	16	11.6	39.00	26.48	R	12	R					2.7	R				
530	17	6	2010	8	43	48.4	37.35	28.25	R	9	R					2.5	R				
531	17	6	2010	10	29	39.8	40.61	35.10	R	12	R					2.8	R	2.8	R		
532	17	6	2010	11	22	26.0	37.23	27.92	R	23	R					2.6	R				
533	17	6	2010	11	53	19.0	39.95	24.36	R	18	R							2.9	R		
534	17	6	2010	12	31	52.9	37.25	28.19	R	10	R					2.5	R				
535	17	6	2010	14	9	20.1	40.26	28.30	R	3	R					2.3	R				
536	17	6	2010	14	19	9.3	38.57	38.93	R	5	R					2.2	R				
537	17	6	2010	14	55	37.1	36.81	39.54	R	11	R					3.3	R				
538	17	6	2010	15	51	0.7	37.83	38.38	R	10	R					2.8	R				
539	17	6	2010	15	57	45.6	39.65	29.08	R	8	R					2.7	R				
540	17	6	2010	16	0	12.0	41.65	35.25	R	5	R					2.8	R				

TÜRKİYE DEPREM ETKİNLİĞİ (2010 YILI HAZİRAN AYI)

No	Tarih - Date			Zaman - Time			Koordinat - Coordinate			Derinlik - Depth		Magnitüd - Magnitude										
	Gün	Ay	Yıl	Saat	Dak.	San.	Enlem-K	Boylam-D	Ref	Km.	Ref	Ms	Ref	Mb	Ref	Md	Ref	MI	Ref	Mw	Ref	
541	17	6	2010	18	56	23.5	37.61	32.06	R	20	R					2.6	R					
542	17	6	2010	20	3	46.3	35.52	26.54	R	2	R							3.3	R			
543	17	6	2010	23	56	8.5	38.80	40.11	R	6	R					3.2	R					
544	18	6	2010	0	24	40.1	35.16	27.12	R	13	R					3.4	R					
545	18	6	2010	0	36	42.3	38.08	41.37	R	5	R					2.8	R					
546	18	6	2010	6	30	15.8	37.26	28.22	R	13	R					2.7	R					
547	18	6	2010	6	31	48.9	38.20	38.63	R	14	R					2.1	R					
548	18	6	2010	9	13	35.6	39.28	27.73	R	18	R					2.8	R					
549	18	6	2010	9	19	28.3	37.65	34.73	R	5	R					2.8	R					
550	18	6	2010	10	48	6.9	39.56	29.83	R	12	R					2.8	R					
551	18	6	2010	11	1	26.1	39.32	27.62	R	5	R					2.6	R					
552	18	6	2010	14	21	12.0	39.49	31.04	R	10	R					2.7	R					
553	18	6	2010	14	42	38.3	37.26	28.23	R	15	R					2.6	R					
554	18	6	2010	19	13	32.4	37.00	35.19	R	25	R					3.0	R					
555	19	6	2010	1	6	48.4	40.81	33.81	R	10	R					2.7	R					
556	19	6	2010	6	49	6.8	37.26	28.21	R	7	R					2.7	R					
557	19	6	2010	8	1	24.4	37.19	27.88	R	4	R					2.5	R					
558	19	6	2010	8	11	54.9	37.22	28.13	R	6	R					2.8	R					
559	19	6	2010	9	51	53.6	39.72	35.06	R	13	R					2.8	R					
560	19	6	2010	10	29	51.2	39.04	40.77	R	5	R							3.1	R			

TÜRKİYE DEPREM ETKİNLİĞİ (2010 YILI HAZİRAN AYI)

No	Tarih - Date			Zaman - Time			Koordinat - Coordinate			Derinlik - Depth		Magnitüd - Magnitude									
	Gün	Ay	Yıl	Saat	Dak.	San.	Enlem-K	Boylam-D	Ref	Km.	Ref	Ms	Ref	Mb	Ref	Md	Ref	MI	Ref	Mw	Ref
561	19	6	2010	11	10	46.3	37.68	34.83	R	25	R					2.5	R				
562	19	6	2010	12	34	42.7	39.30	29.23	R	7	R					2.6	R				
563	19	6	2010	14	6	10.5	37.07	27.93	R	3	R					2.6	R				
564	19	6	2010	14	13	8.5	41.46	36.04	R	6	R					2.6	R				
565	19	6	2010	14	57	3.2	38.48	43.54	R	8	R					2.6	R				
566	19	6	2010	15	0	8.8	39.25	27.71	R	21	R					2.5	R				
567	19	6	2010	15	12	22.9	39.34	28.09	R	14	R					2.5	R				
568	19	6	2010	16	10	52.9	40.06	40.80	R	8	R					2.8	R				
569	19	6	2010	18	54	49.5	39.29	28.14	R	5	R					2.7	R				
570	19	6	2010	19	7	52.9	40.15	27.23	R	6	R					2.5	R				
571	19	6	2010	20	19	31.5	37.53	35.71	R	7	R					2.8	R				
572	19	6	2010	22	22	24.1	38.88	38.88	R	27	R					2.5	R				
573	19	6	2010	22	22	34.0	37.09	30.46	R	7	R					2.8	R				
574	19	6	2010	22	46	9.5	37.99	27.75	R	2	R					2.5	R				
575	19	6	2010	23	24	14.6	39.47	25.90	R	5	R					2.8	R				
576	19	6	2010	23	49	58.4	38.38	39.31	R	11	R					3.0	R				
577	20	6	2010	4	24	50.7	38.86	27.17	R	9	R					2.7	R				
578	20	6	2010	5	56	15.4	39.92	28.83	R	4	R					2.7	R				
579	20	6	2010	6	43	49.5	37.23	28.16	R	8	R					2.7	R				
580	20	6	2010	7	30	0.9	38.20	26.22	R	22	R					3.0	R				

TÜRKİYE DEPREM ETKİNLİĞİ (2010 YILI HAZİRAN AYI)

No	Tarih - Date			Zaman - Time			Koordinat - Coordinate			Derinlik - Depth		Magnitüd - Magnitude									
	Gün	Ay	Yıl	Saat	Dak.	San.	Enlem-K	Boylam-D	Ref	Km.	Ref	Ms	Ref	Mb	Ref	Md	Ref	MI	Ref	Mw	Ref
581	20	6	2010	8	59	43.8	37.19	28.16	R	4	R					2.6	R				
582	20	6	2010	11	36	12.8	37.26	27.68	R	20	R					2.7	R				
583	20	6	2010	12	12	23.1	37.44	34.58	R	8	R					2.8	R				
584	20	6	2010	13	5	31.0	37.21	28.19	R	15	R					2.7	R				
585	20	6	2010	13	11	28.4	37.30	35.42	R	17	R					2.6	R				
586	20	6	2010	14	40	25.0	37.25	28.20	R	2	R					2.6	R				
587	20	6	2010	16	49	49.9	36.18	27.16	R	21	R					3.2	R				
588	20	6	2010	17	23	28.8	39.27	40.49	R	5	R					2.6	R				
589	20	6	2010	17	39	15.5	38.89	28.02	R	13	R					2.6	R				
590	20	6	2010	18	27	6.7	36.22	27.80	R	10	R					2.7	R				
591	20	6	2010	18	33	8.2	40.03	34.33	R	8	R					2.7	R				
592	20	6	2010	19	41	11.8	39.94	39.01	R	5	R					2.7	R				
593	20	6	2010	19	46	56.7	39.16	29.06	R	5	R					2.6	R				
594	20	6	2010	19	51	6.6	39.98	34.39	R	8	R					2.5	R				
595	20	6	2010	20	22	41.2	37.95	38.04	R	5	R					2.5	R				
596	20	6	2010	21	47	27.8	37.43	31.07	R	102	R					2.7	R				
597	20	6	2010	22	7	59.6	36.21	28.86	R	5	R					3.0	R				
598	20	6	2010	22	40	10.0	39.01	35.79	R	5	R					2.9	R				
599	21	6	2010	0	34	6.9	38.04	42.74	R	5	R					3.0	R				
600	21	6	2010	5	30	46.8	37.24	28.21	R	7	R					2.6	R				

TÜRKİYE DEPREM ETKİNLİĞİ (2010 YILI HAZİRAN AYI)

No	Tarih - Date			Zaman - Time			Koordinat - Coordinate			Derinlik - Depth		Magnitüd - Magnitude									
	Gün	Ay	Yıl	Saat	Dak.	San.	Enlem-K	Boylam-D	Ref	Km.	Ref	Ms	Ref	Mb	Ref	Md	Ref	MI	Ref	Mw	Ref
601	21	6	2010	7	28	33.7	37.26	28.24	R	16	R					2.6	R				
602	21	6	2010	9	18	6.0	39.92	28.85	R	6	R					2.6	R				
603	21	6	2010	13	24	7.6	36.50	27.73	R	19	R					2.9	R				
604	21	6	2010	14	12	21.9	36.88	30.44	R	25	R					2.7	R				
605	21	6	2010	14	21	38.5	41.66	34.88	R	5	R					2.7	R				
606	21	6	2010	14	45	45.4	37.25	28.17	R	5	R					2.5	R				
607	21	6	2010	15	4	5.4	39.28	27.66	R	18	R					2.7	R				
608	21	6	2010	15	9	51.4	39.25	27.73	R	6	R					2.7	R				
609	21	6	2010	15	32	48.7	39.75	30.23	R	12	R					2.6	R				
610	21	6	2010	16	14	9.8	40.58	30.34	R	5	R					2.4	R				
611	21	6	2010	16	30	30.0	40.01	33.56	R	9	R					2.7	R				
612	21	6	2010	17	4	58.9	39.17	34.20	R	5	R					2.6	R				
613	21	6	2010	17	14	18.1	40.65	41.74	R	5	R					2.6	R				
614	21	6	2010	19	17	45.2	35.54	36.74	R	3	R							3.3	R		
615	21	6	2010	20	46	35.8	39.66	26.08	R	5	R					3.0	R				
616	22	6	2010	0	4	15.0	38.27	26.59	R	7	R					2.8	R				
617	22	6	2010	0	21	58.4	38.63	39.62	R	11	R					2.7	R				
618	22	6	2010	0	59	49.1	36.88	27.54	R	5	R					2.7	R				
619	22	6	2010	1	17	51.3	35.72	29.51	R	11	R							3.4	R		
620	22	6	2010	1	35	9.8	40.61	33.03	R	6	R					2.9	R				

TÜRKİYE DEPREM ETKİNLİĞİ (2010 YILI HAZİRAN AYI)

No	Tarih - Date			Zaman - Time			Koordinat - Coordinate			Derinlik - Depth		Magnitüd - Magnitude									
	Gün	Ay	Yıl	Saat	Dak.	San.	Enlem-K	Boylam-D	Ref	Km.	Ref	Ms	Ref	Mb	Ref	Md	Ref	MI	Ref	Mw	Ref
621	22	6	2010	5	36	34.6	39.18	28.86	R	5	R					2.7	R				
622	22	6	2010	6	7	54.8	36.30	27.53	R	8	R							3.1	R		
623	22	6	2010	6	55	20.3	37.22	28.19	R	12	R					2.7	R				
624	22	6	2010	8	2	45.4	38.36	39.36	R	6	R					2.9	R				
625	22	6	2010	8	58	49.0	37.90	32.46	R	14	R					2.3	R				
626	22	6	2010	9	4	19.8	37.65	34.69	R	20	R					2.5	R				
627	22	6	2010	9	38	21.9	38.34	39.34	R	13	R					2.8	R				
628	22	6	2010	10	3	45.2	39.73	30.80	R	8	R					2.6	R				
629	22	6	2010	11	11	5.2	40.34	29.15	R	4	R					2.4	R				
630	22	6	2010	11	18	21.6	39.99	27.38	R	8	R					2.6	R				
631	22	6	2010	11	34	35.1	37.07	29.70	R	14	R					2.7	R				
632	22	6	2010	11	45	44.2	34.91	32.42	R	7	R					3.4	R				
633	22	6	2010	12	1	30.3	41.72	34.90	R	11	R					2.5	R				
634	22	6	2010	13	24	5.5	36.97	35.46	R	13	R							3.3	R		
635	22	6	2010	13	31	39.0	37.25	28.19	R	6	R					2.7	R				
636	22	6	2010	14	2	29.2	39.23	27.83	R	8	R					2.9	R				
637	22	6	2010	14	4	15.0	39.48	28.06	R	5	R					3.0	R				
638	22	6	2010	14	32	2.4	40.04	37.35	R	15	R					2.7	R				
639	22	6	2010	14	38	25.8	40.50	26.39	R	23	R					2.5	R				
640	22	6	2010	14	43	51.9	37.19	28.19	R	7	R					2.3	R				

TÜRKİYE DEPREM ETKİNLİĞİ (2010 YILI HAZİRAN AYI)

No	Tarih - Date			Zaman - Time			Koordinat - Coordinate			Derinlik - Depth		Magnitüd - Magnitude									
	Gün	Ay	Yıl	Saat	Dak.	San.	Enlem-K	Boylam-D	Ref	Km.	Ref	Ms	Ref	Mb	Ref	Md	Ref	MI	Ref	Mw	Ref
641	22	6	2010	15	14	33.6	37.82	38.38	R	5	R					2.7	R				
642	22	6	2010	15	28	0.3	37.24	28.20	R	7	R					2.5	R				
643	22	6	2010	15	32	18.7	37.24	28.20	R	2	R					2.5	R				
644	22	6	2010	15	32	42.2	38.79	40.06	R	5	R					2.7	R				
645	22	6	2010	15	48	27.8	40.32	27.83	R	5	R					2.6	R				
646	22	6	2010	15	57	29.4	39.37	31.60	R	2	R					2.6	R				
647	22	6	2010	19	11	15.2	37.93	29.15	R	7	R					2.8	R				
648	22	6	2010	19	48	5.3	37.58	36.18	R	7	R					2.6	R				
649	22	6	2010	22	23	31.3	35.76	27.40	R	16	R					2.9	R				
650	22	6	2010	22	32	6.8	40.80	27.85	R	11	R					2.6	R				
651	23	6	2010	0	46	41.0	36.76	42.22	R	16	R					2.9	R				
652	23	6	2010	1	4	23.5	40.73	27.51	R	7	R					2.7	R				
653	23	6	2010	1	17	40.6	39.64	38.73	R	7	R					2.9	R				
654	23	6	2010	4	3	6.7	36.80	33.94	R	5	R					3.0	R				
655	23	6	2010	5	37	15.6	39.29	29.29	R	10	R					2.8	R				
656	23	6	2010	8	44	54.2	37.25	28.26	R	11	R					2.6	R				
657	23	6	2010	8	52	20.0	37.31	28.25	R	5	R					2.5	R				
658	23	6	2010	9	49	2.5	37.66	34.74	R	22	R					2.6	R				
659	23	6	2010	9	50	50.6	37.15	28.65	R	10	R					2.7	R				
660	23	6	2010	11	0	21.7	39.68	26.42	R	8	R					2.7	R				

TÜRKİYE DEPREM ETKİNLİĞİ (2010 YILI HAZİRAN AYI)

No	Tarih - Date			Zaman - Time			Koordinat - Coordinate			Derinlik - Depth		Magnitüd - Magnitude										
	Gün	Ay	Yıl	Saat	Dak.	San.	Enlem-K	Boylam-D	Ref	Km.	Ref	Ms	Ref	Mb	Ref	Md	Ref	MI	Ref	Mw	Ref	
661	23	6	2010	11	28	12.7	40.76	29.24	R	9	R					2.6	R					
662	23	6	2010	12	5	17.7	35.11	25.81	R	21	R							2.9	R			
663	23	6	2010	13	5	6.8	38.45	44.48	R	5	R							3.6	R			
664	23	6	2010	13	27	35.0	39.96	39.27	R	5	R							3.7	R			
665	23	6	2010	14	11	51.6	35.91	26.45	R	8	R					3.0	R					
666	23	6	2010	14	31	40.9	38.60	37.53	R	5	R					2.7	R					
667	23	6	2010	14	43	13.2	39.77	40.49	R	10	R					2.6	R					
668	23	6	2010	14	44	30.4	39.27	40.29	R	13	R					2.6	R					
669	23	6	2010	15	43	12.1	35.26	40.16	R	5	R							3.9	R			
670	23	6	2010	16	7	14.3	39.98	39.29	R	5	R					2.6	R					
671	23	6	2010	16	12	35.1	37.20	27.69	R	8	R					2.5	R					
672	23	6	2010	16	32	49.9	38.92	26.16	R	6	R					2.7	R					
673	23	6	2010	22	10	12.5	36.84	27.58	R	6	R					2.6	R					
674	23	6	2010	22	20	27.8	40.35	25.56	R	5	R					2.9	R					
675	23	6	2010	23	12	24.5	38.38	26.64	R	9	R					2.7	R					
676	24	6	2010	1	16	13.3	36.87	27.63	R	8	R					2.9	R					
677	24	6	2010	2	29	0.2	36.92	27.52	R	15	R					2.6	R					
678	24	6	2010	2	58	26.9	37.20	27.69	R	5	R					2.7	R					
679	24	6	2010	3	11	35.3	39.47	25.94	R	4	R					2.4	R					
680	24	6	2010	3	30	38.0	39.49	25.93	R	7	R					2.7	R					

TÜRKİYE DEPREM ETKİNLİĞİ (2010 YILI HAZİRAN AYI)

No	Tarih - Date			Zaman - Time			Koordinat - Coordinate			Derinlik - Depth		Magnitüd - Magnitude										
	Gün	Ay	Yıl	Saat	Dak.	San.	Enlem-K	Boylam-D	Ref	Km.	Ref	Ms	Ref	Mb	Ref	Md	Ref	MI	Ref	Mw	Ref	
681	24	6	2010	3	39	28.0	37.88	29.36	R	5	R					3.0	R					
682	24	6	2010	4	33	32.8	38.57	40.62	R	3	R							3.5	R			
683	24	6	2010	5	9	37.0	37.20	28.24	R	6	R					2.4	R					
684	24	6	2010	6	17	48.8	39.36	38.34	R	5	R							2.9	R			
685	24	6	2010	6	38	53.4	37.29	28.25	R	5	R					2.7	R					
686	24	6	2010	8	44	14.2	37.12	28.14	R	5	R					2.7	R					
687	24	6	2010	9	2	24.3	40.02	28.48	R	3	R					2.7	R					
688	24	6	2010	10	38	12.2	37.50	39.01	R	5	R					2.8	R					
689	24	6	2010	12	14	13.0	38.52	27.48	R	6	R					1.7	R					
690	24	6	2010	12	18	17.6	36.87	39.32	R	10	R					2.7	R					
691	24	6	2010	14	44	50.1	37.17	28.15	R	5	R					2.5	R					
692	24	6	2010	14	58	34.6	39.29	26.10	R	12	R					2.9	R					
693	24	6	2010	15	23	21.9	39.27	29.33	R	7	R					2.8	R					
694	24	6	2010	15	33	19.3	39.82	26.76	R	5	R					2.6	R					
695	24	6	2010	16	14	51.3	40.43	27.20	R	8	R					2.2	R					
696	24	6	2010	17	44	0.4	39.33	24.85	R	8	R					3.0	R					
697	24	6	2010	18	56	0.6	39.10	40.37	R	5	R					2.7	R					
698	24	6	2010	19	48	19.7	40.81	27.62	R	14	R					2.4	R					
699	24	6	2010	20	50	55.8	35.56	26.17	R	14	R							3.6	R			
700	24	6	2010	22	20	11.2	39.45	28.02	R	5	R					2.5	R					

TÜRKİYE DEPREM ETKİNLİĞİ (2010 YILI HAZİRAN AYI)

No	Tarih - Date			Zaman - Time			Koordinat - Coordinate			Derinlik - Depth		Magnitüd - Magnitude									
	Gün	Ay	Yıl	Saat	Dak.	San.	Enlem-K	Boylam-D	Ref	Km.	Ref	Ms	Ref	Mb	Ref	Md	Ref	MI	Ref	Mw	Ref
701	24	6	2010	23	17	3.0	40.98	39.68	R	15	R					2.3	R				
702	25	6	2010	2	26	33.9	38.92	26.75	R	7	R					2.9	R				
703	25	6	2010	3	46	12.3	39.01	41.28	R	7	R					2.8	R				
704	25	6	2010	3	49	6.9	38.92	26.74	R	10	R					2.9	R				
705	25	6	2010	4	51	58.7	38.92	29.97	R	6	R					2.3	R				
706	25	6	2010	5	44	35.2	37.28	28.19	R	5	R					2.4	R				
707	25	6	2010	5	58	26.7	36.15	30.42	R	26	R					3.6	R				
708	25	6	2010	6	18	57.0	40.04	27.73	R	16	R					2.4	R				
709	25	6	2010	6	47	15.2	37.24	28.24	R	16	R					2.6	R				
710	25	6	2010	7	32	36.5	39.42	33.11	R	6	R					2.7	R				
711	25	6	2010	8	47	54.4	37.24	28.30	R	5	R					2.6	R				
712	25	6	2010	9	42	57.7	37.23	28.20	R	11	R					2.7	R				
713	25	6	2010	11	3	19.2	39.49	33.50	R	7	R					2.6	R				
714	25	6	2010	11	46	35.0	37.40	37.10	R	11	R					2.9	R				
715	25	6	2010	12	30	36.9	37.10	28.53	R	13	R					2.5	R				
716	25	6	2010	14	30	30.1	39.21	27.80	R	5	R					2.9	R				
717	25	6	2010	14	35	31.8	38.63	35.80	R	5	R					3.1	R				
718	25	6	2010	15	27	39.0	36.44	26.27	R	22	R					3.5	R				
719	25	6	2010	18	7	54.0	38.13	25.55	R	5	R					3.2	R				
720	25	6	2010	18	56	48.0	40.66	25.88	R	9	R					2.9	R				

TÜRKİYE DEPREM ETKİNLİĞİ (2010 YILI HAZİRAN AYI)

No	Tarih - Date			Zaman - Time			Koordinat - Coordinate			Derinlik - Depth		Magnitüd - Magnitude										
	Gün	Ay	Yıl	Saat	Dak.	San.	Enlem-K	Boylam-D	Ref	Km.	Ref	Ms	Ref	Mb	Ref	Md	Ref	MI	Ref	Mw	Ref	
721	25	6	2010	19	5	5.0	39.05	40.46	R	25	R					2.9	R					
722	25	6	2010	19	17	26.0	35.59	26.25	R	73	R							3.4	R			
723	25	6	2010	19	28	2.6	35.47	26.30	N	15	N			4.1	N			4.0	R			
724	25	6	2010	20	50	18.2	37.54	29.83	R	5	R							3.4	R			
725	25	6	2010	21	41	20.8	35.46	26.31	R	10	R					3.3	R					
726	25	6	2010	22	8	49.3	40.51	29.19	R	4	R					2.6	R					
727	25	6	2010	22	12	10.3	35.78	26.33	R	16	R					3.0	R					
728	25	6	2010	23	39	21.0	35.97	26.39	R	21	R							3.3	R			
729	26	6	2010	0	21	11.3	40.25	25.45	R	18	R					2.7	R					
730	26	6	2010	0	49	13.9	35.79	26.39	R	10	R							3.3	R			
731	26	6	2010	1	14	5.5	35.62	26.28	R	13	R							3.3	R			
732	26	6	2010	1	19	15.7	35.99	26.30	R	21	R							3.2	R			
733	26	6	2010	1	22	16.6	35.67	26.75	R	5	R					3.1	R					
734	26	6	2010	1	36	5.6	40.80	36.17	R	14	R					2.8	R					
735	26	6	2010	1	52	45.4	35.44	26.21	R	15	R							3.3	R			
736	26	6	2010	1	57	2.6	35.42	26.06	R	15	R							3.3	R			
737	26	6	2010	2	52	35.0	35.56	26.22	R	13	R							3.6	R			
738	26	6	2010	3	16	17.3	37.51	35.59	R	18	R					2.7	R					
739	26	6	2010	3	17	11.0	35.98	26.36	R	22	R							3.2	R			
740	26	6	2010	5	10	38.2	35.55	26.43	R	3	R							3.1	R			

TÜRKİYE DEPREM ETKİNLİĞİ (2010 YILI HAZİRAN AYI)

No	Tarih - Date			Zaman - Time			Koordinat - Coordinate			Derinlik - Depth		Magnitüd - Magnitude									
	Gün	Ay	Yıl	Saat	Dak.	San.	Enlem-K	Boylam-D	Ref	Km.	Ref	Ms	Ref	Mb	Ref	Md	Ref	MI	Ref	Mw	Ref
741	26	6	2010	7	37	11.9	40.31	25.51	R	5	R					2.9	R				
742	26	6	2010	8	0	27.2	37.26	28.23	R	3	R					2.7	R				
743	26	6	2010	10	54	56.8	39.98	33.56	R	5	R					2.8	R				
744	26	6	2010	14	17	30.1	40.49	27.55	R	9	R					2.7	R				
745	26	6	2010	14	44	44.6	40.10	29.35	R	2	R							2.7	R		
746	26	6	2010	15	21	28.0	35.97	26.37	R	9	R					3.0	R				
747	26	6	2010	15	52	11.3	39.50	37.43	R	8	R					2.9	R				
748	26	6	2010	15	57	19.2	39.14	35.29	R	10	R					2.8	R				
749	26	6	2010	17	16	33.6	37.82	42.86	R	14	R					2.7	R				
750	26	6	2010	17	25	13.2	39.31	24.87	R	8	R					3.2	R				
751	26	6	2010	17	35	24.0	39.34	24.95	R	10	R							3.2	R		
752	26	6	2010	18	1	30.3	40.61	27.26	R	9	R					2.8	R				
753	26	6	2010	18	9	47.5	39.10	41.89	R	5	R					2.9	R				
754	26	6	2010	21	23	21.5	40.97	39.77	R	16	R					2.7	R				
755	26	6	2010	22	49	19.1	37.52	38.74	R	6	R					2.6	R				
756	26	6	2010	23	27	33.6	39.84	42.00	R	10	R					2.7	R				
757	27	6	2010	0	24	40.5	36.87	27.48	R	3	R					2.8	R				
758	27	6	2010	0	33	54.4	36.30	36.20	R	5	R					2.7	R				
759	27	6	2010	2	45	38.0	36.93	27.53	R	2	R					2.7	R				
760	27	6	2010	2	56	26.2	39.50	29.94	R	8	R					2.6	R				

TÜRKİYE DEPREM ETKİNLİĞİ (2010 YILI HAZİRAN AYI)

No	Tarih - Date			Zaman - Time			Koordinat - Coordinate			Derinlik - Depth		Magnitüd - Magnitude									
	Gün	Ay	Yıl	Saat	Dak.	San.	Enlem-K	Boylam-D	Ref	Km.	Ref	Ms	Ref	Mb	Ref	Md	Ref	MI	Ref	Mw	Ref
761	27	6	2010	3	22	30.5	39.13	33.29	R	6	R					2.4	R				
762	27	6	2010	8	16	10.9	37.24	28.19	R	3	R					2.8	R				
763	27	6	2010	8	18	42.8	38.66	28.77	R	5	R					2.6	R				
764	27	6	2010	9	4	23.9	39.26	27.73	R	8	R					2.8	R				
765	27	6	2010	10	3	40.9	39.94	39.92	R	4	R					2.9	R				
766	27	6	2010	10	50	5.2	38.47	29.06	R	3	R					2.5	R				
767	27	6	2010	11	46	48.5	37.23	28.22	R	19	R					2.7	R				
768	27	6	2010	13	27	37.1	38.31	41.02	R	5	R							3.8	R		
769	27	6	2010	13	46	25.8	39.03	34.78	R	5	R					3.0	R				
770	27	6	2010	14	44	10.1	37.24	28.12	R	5	R					2.8	R				
771	27	6	2010	18	27	21.5	39.03	41.84	R	5	R							3.0	R		
772	27	6	2010	19	5	56.2	38.74	39.66	R	5	R					2.9	R				
773	27	6	2010	21	41	31.0	39.05	28.39	R	11	R					2.7	R				
774	27	6	2010	22	15	48.7	35.50	26.31	R	20	R					3.0	R				
775	27	6	2010	23	13	34.0	36.82	27.49	R	15	R					2.8	R				
776	28	6	2010	0	52	46.7	39.57	28.93	R	7	R					2.9	R				
777	28	6	2010	1	33	13.0	39.25	29.19	R	4	R					2.8	R				
778	28	6	2010	2	29	5.3	38.17	42.71	R	6	R					2.9	R				
779	28	6	2010	2	31	22.2	38.28	36.65	R	7	R					2.9	R				
780	28	6	2010	6	30	5.0	37.24	28.21	R	2	R					2.7	R				

TÜRKİYE DEPREM ETKİNLİĞİ (2010 YILI HAZİRAN AYI)

No	Tarih - Date			Zaman - Time			Koordinat - Coordinate			Derinlik - Depth		Magnitüd - Magnitude									
	Gün	Ay	Yıl	Saat	Dak.	San.	Enlem-K	Boylam-D	Ref	Km.	Ref	Ms	Ref	Mb	Ref	Md	Ref	MI	Ref	Mw	Ref
781	28	6	2010	6	56	26.6	39.51	25.94	R	5	R					2.7	R				
782	28	6	2010	7	55	28.5	38.79	40.04	R	4	R					2.9	R				
783	28	6	2010	8	42	3.0	39.32	41.97	R	6	R					3.0	R				
784	28	6	2010	9	27	26.2	40.90	33.91	R	9	R					3.0	R				
785	28	6	2010	12	48	55.8	40.53	29.52	R	9	R					2.9	R				
786	28	6	2010	13	21	55.2	37.03	39.36	R	2	R					3.0	R				
787	28	6	2010	15	26	55.7	39.45	28.27	R	6	R					2.2	R				
788	28	6	2010	17	23	39.3	37.84	29.19	R	16	R					2.9	R				
789	28	6	2010	19	30	46.4	38.94	29.97	R	5	R					2.8	R				
790	28	6	2010	21	21	19.8	38.67	31.83	R	5	R					2.4	R				
791	28	6	2010	22	37	1.7	39.41	33.07	R	6	R					2.1	R				
792	29	6	2010	2	17	42.1	37.74	26.96	R	15	R					3.0	R				
793	29	6	2010	2	24	42.1	40.19	41.03	R	13	R					2.8	R				
794	29	6	2010	3	2	55.0	39.65	27.76	R	4	R					2.5	R				
795	29	6	2010	4	7	38.0	38.34	41.03	R	9	R					3.0	R				
796	29	6	2010	4	43	13.0	38.42	38.93	R	22	R					2.8	R				
797	29	6	2010	6	27	1.9	37.74	28.23	R	6	R					2.7	R				
798	29	6	2010	7	18	16.3	37.25	34.99	R	22	R					2.4	R				
799	29	6	2010	9	14	53.6	40.26	30.03	R	5	R					2.2	R				
800	29	6	2010	9	54	30.2	39.20	27.89	R	10	R					2.3	R				

TÜRKİYE DEPREM ETKİNLİĞİ (2010 YILI HAZİRAN AYI)

No	Tarih - Date			Zaman - Time			Koordinat - Coordinate			Derinlik - Depth		Magnitüd - Magnitude									
	Gün	Ay	Yıl	Saat	Dak.	San.	Enlem-K	Boylam-D	Ref	Km.	Ref	Ms	Ref	Mb	Ref	Md	Ref	MI	Ref	Mw	Ref
801	29	6	2010	11	57	53.7	39.63	29.86	R	4	R					2.4	R				
802	29	6	2010	12	8	5.1	39.58	25.47	R	12	R							3.4	R		
803	29	6	2010	12	56	56.6	39.60	25.45	R	5	R					2.7	R				
804	29	6	2010	13	6	44.8	39.98	28.10	R	9	R					2.4	R				
805	29	6	2010	13	37	3.9	39.99	26.95	R	14	R					2.5	R				
806	29	6	2010	14	28	18.8	37.26	39.38	R	5	R					2.5	R				
807	29	6	2010	15	33	8.1	39.11	33.25	R	7	R					2.8	R				
808	29	6	2010	17	46	1.3	37.47	30.15	R	5	R					3.0	R				
809	29	6	2010	21	18	52.5	37.92	27.17	R	10	R					2.8	R				
810	29	6	2010	21	54	55.8	40.27	25.51	R	5	R					3.2	R				
811	29	6	2010	22	7	33.6	38.02	25.99	R	5	R					2.8	R				
812	30	6	2010	2	37	39.8	38.12	28.84	R	5	R					3.0	R				
813	30	6	2010	5	16	45.2	38.08	26.09	R	3	R					2.8	R				
814	30	6	2010	5	56	29.0	37.09	28.59	R	9	R					2.6	R				
815	30	6	2010	6	7	32.8	40.30	25.94	R	17	R					2.7	R				
816	30	6	2010	8	51	26.2	39.76	30.22	R	3	R					2.5	R				
817	30	6	2010	9	2	33.6	37.04	27.91	R	5	R					2.3	R				
818	30	6	2010	9	34	39.4	39.29	27.72	R	5	R					2.6	R				
819	30	6	2010	9	41	32.0	39.28	28.06	R	12	R					2.7	R				
820	30	6	2010	10	5	43.0	39.94	37.55	R	5	R					2.9	R				

TÜRKİYE DEPREM ETKİNLİĞİ (2010 YILI HAZİRAN AYI)

No	Tarih - Date			Zaman - Time			Koordinat - Coordinate			Derinlik - Depth		Magnitüd - Magnitude									
	Gün	Ay	Yıl	Saat	Dak.	San.	Enlem-K	Boylam-D	Ref	Km.	Ref	Ms	Ref	Mb	Ref	Md	Ref	MI	Ref	Mw	Ref
821	30	6	2010	12	15	58.5	39.70	33.04	R	5	R					2.3	R				
822	30	6	2010	12	20	9.6	39.40	28.27	R	11	R					2.3	R				
823	30	6	2010	12	30	24.0	37.55	28.08	R	6	R					2.5	R				
824	30	6	2010	13	16	34.3	39.94	42.59	R	23	R					2.8	R				
825	30	6	2010	13	36	56.7	40.63	26.95	R	22	R					2.6	R				
826	30	6	2010	13	56	55.6	36.77	39.52	R	5	R					3.0	R				
827	30	6	2010	14	22	56.5	36.84	29.32	R	7	R							3.5	R		
828	30	6	2010	14	45	0.1	37.22	28.23	R	6	R					2.8	R				
829	30	6	2010	15	19	28.8	39.49	28.98	R	5	R					2.5	R				
830	30	6	2010	16	14	41.9	37.66	38.07	R	4	R					2.6	R				
831	30	6	2010	17	39	4.9	40.73	29.16	R	12	R					2.7	R				
832	30	6	2010	19	42	45.1	40.60	29.03	R	10	R					2.8	R				
833	30	6	2010	19	53	9.8	35.73	26.49	R	5	R					3.5	R				
834	30	6	2010	20	42	34.6	36.03	27.26	R	14	R					3.0	R				
835	30	6	2010	23	15	14.1	38.36	29.81	R	2	R					2.5	R				