



Kandilli Rasathanesi Ve Deprem Araştırma Enstitüsü

ULUSAL DEPREM İZLEME MERKEZİ



*2010 AĞUSTOS AYI
BÜLTENİ*

*YIL: 7 - SAYI: 80
İSTANBUL*

Hazırlayan ve Katkıda Bulunanlar

D. Kalafat

K. Kekovalı

K. Kılıç

Y. Güneş

Z. Öğütcü

M. Kara

M. Yilmazer

M. Suvarıklı

E. Görgün

M. Çomoğlu

A. Küsmezer

P. Deniz

A. Berberoğlu

M. Berberoğlu

S. Poyraz

D. Kepekçi

R. Polat

M.F. Akkoyunlu

M.D. Cambaz

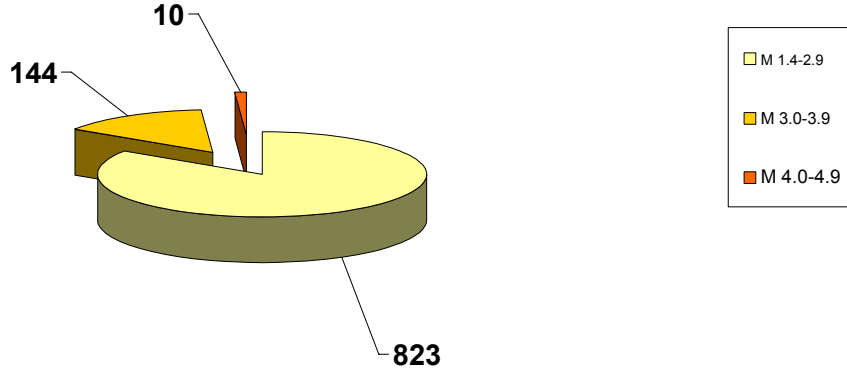
Ö. Çok

M. Özer

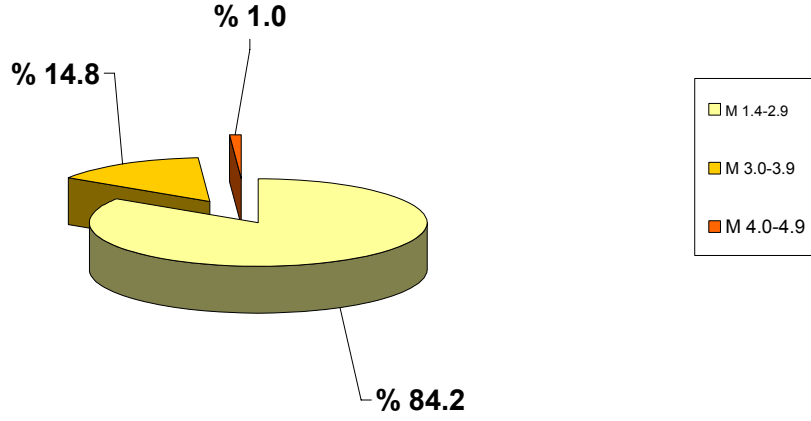
2010 yılı Ağustos ayında meydana gelen depremlerin
istatistiksel dağılımı

MAGNİTÜD ARALIĞI	TOPLAM
1.4-2.9	823
3.0-3.9	144
4.0-4.9	10
5.0-5.9	—
6.0-6.9	—
7.0-7.9	—
TOPLAM	977

2010 AĞUSTOS AYI DEPREMLERİNİN İSTATİSTİKSEL DAĞILIMI
(Toplam: 977 Adet)



2010 AĞUSTOS AYI DEPREMLERİNİN İSTATİSTİKSEL DAĞILIMI (%)



DEĞERLENDİRME

Ağustos ayında toplam 977 depremin çözümü yapılmıştır. Büyüklüğü 4.0 ve üzerinde olan deprem sayısı 10 adettir. Toplam meydana gelen depremlerin % 84.2 oranını büyüklükleri M=1.4-2.9 arasındaki depremler oluşturmaktadır.

Ağustos ayındaki en önemli depremler ;

Tarih			Zaman		Koordinat		Derinlik	Magnitüd	Yer
Gün	Ay	Yıl	Saat	Dak.	Enlem-K	Boylam-D	Km.	M	
12	8	2010	2	23	39.69	27.55	12	4.9	BALYA-BALIKESİR
6	8	2010	2	37	34.32	25.04	38	4.8	GİRİT'İN GÜNEYİ-AKDENİZ
8	8	2010	4	6	34.91	24.49	6	4.8	GİRİT'İN GÜNEYİ-AKDENİZ
8	8	2010	9	14	40.55	23.58	23	4.6	YUNANİSTAN
5	8	2010	5	31	37.56	35.61	4	4.4	KOZAN-ADANA
8	8	2010	9	0	40.55	23.56	22	4.4	YUNANİSTAN
2	8	2010	17	25	35.3	26.38	36	4.3	GİRİT'İN DOĞUSU-AKDENİZ
8	8	2010	0	24	36.69	27.93	15	4.3	BOZBURUN AÇIKLARI-MUĞLA AKDENİZ
29	8	2010	0	51	38.66	23.38	22	4.3	YUNANİSTAN
21	8	2010	2	35	42.35	26.15	7	4.0	BULGARİSTAN

Ayrıca, Girit Adasının güneyi - Oniki Adalar bölgesi – Antalya açıkları- Akdeniz'de, Kuşadası Körfezi - Saros Körfezi - Ege Denizi'nde, Çınarcık açıkları - Tekirdağ açıkları - Marmara Denizi'nde Muğla, Denizli, Soma-Akisar-Manisa'da, Erzurum ve Adıyaman'da meydana gelen deprem etkinlikleri dikkat çekmektedir. Doğu Anadolu Fay Zonu boyunca ise Kozan-Adana, Sivrice-Karakoçan - Palu-Elazığ'da deprem etkinlikleri gözlenmiştir.

Tuz Gölü civarında, Haziran 2009'da montajları yapılan ve offline olarak çalışan, **CHBY, GULA, KULU, SERE, YAYX, YESY** Broad Band istasyonlarının sinyalleri 22 Temmuz 2010 tarihinde GPRS ile online olarak Udim'e taşınmaya başlanmıştır.

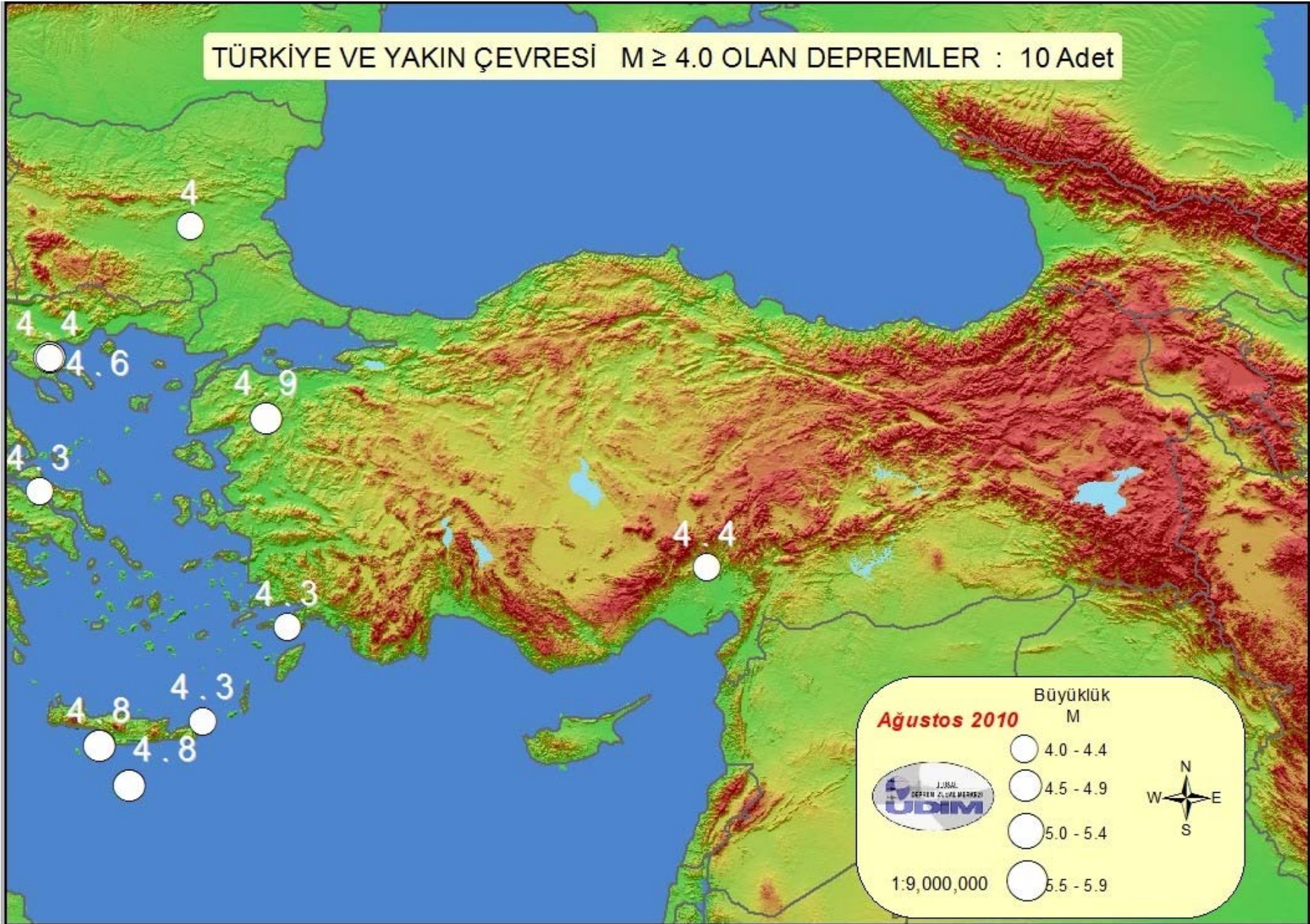
13 Ağustos 2010 tarihinde, Sinop'da (**SNOP**) uydu iletişimli, geniş bantlı deprem istasyonu montajı yapılarak sinyalleri Udim'e taşınmaya başlanmıştır.

108 adet geniş bantlı (Broad Band) istasyonun Ağustos ayı içerisindeki çalışma performansları % 80 dir. Bu ay içerisinde 15 adet geniş bantlı (Broad Band) deprem istasyonu verimsiz olmuştur.

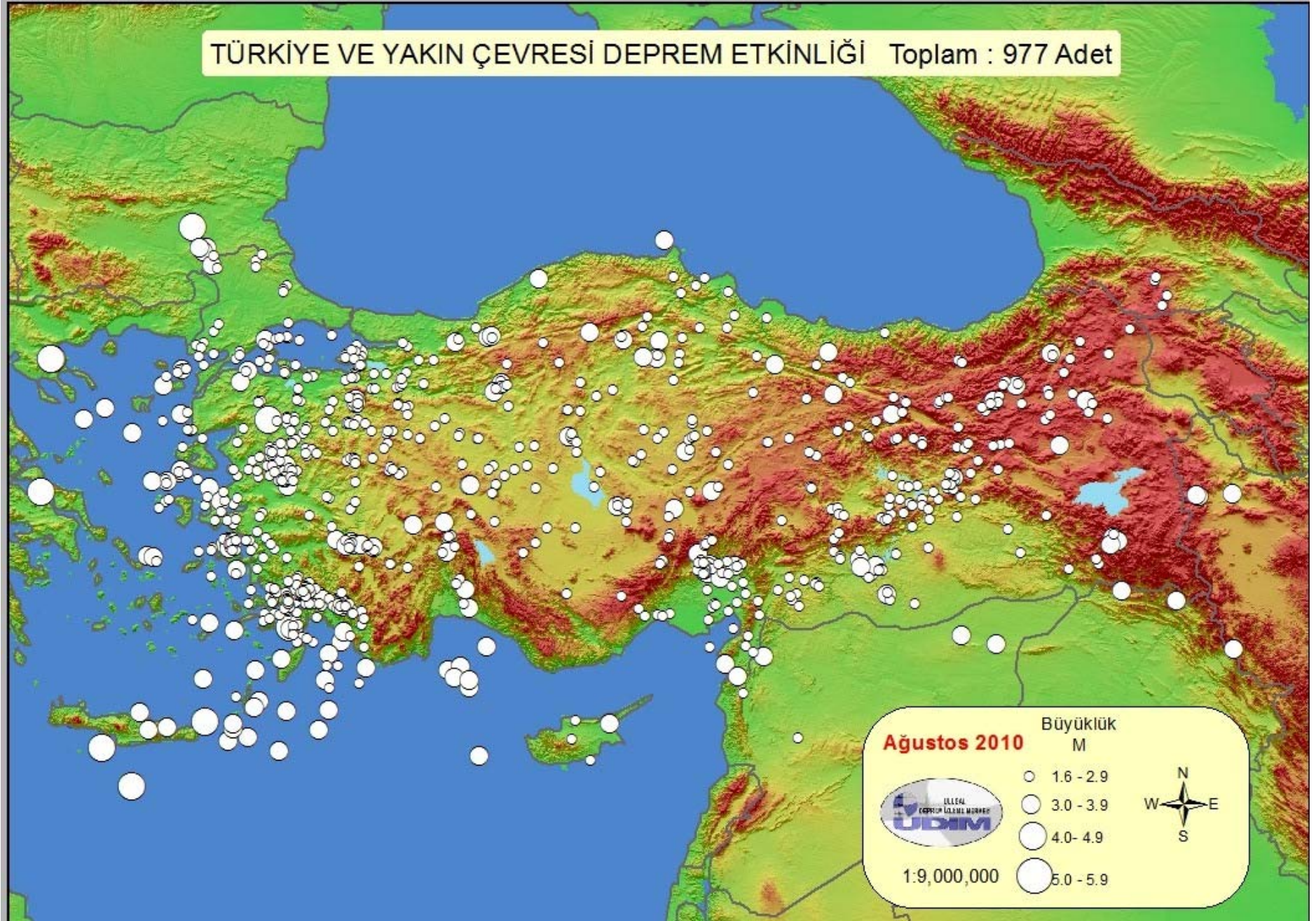
22 adet kısa periyotlu (SP) istasyonun Ağustos ayı içerisindeki çalışma performansları % 92 olup, sadece İzmir (**IZM**) kısa periyot deprem istasyonu verimsiz olmuştur.

Ağustos ayı itibarıyla deprem istasyonlarının ve *sismik ağın ortalama verimlilik performansı* % 83 olmuştur.

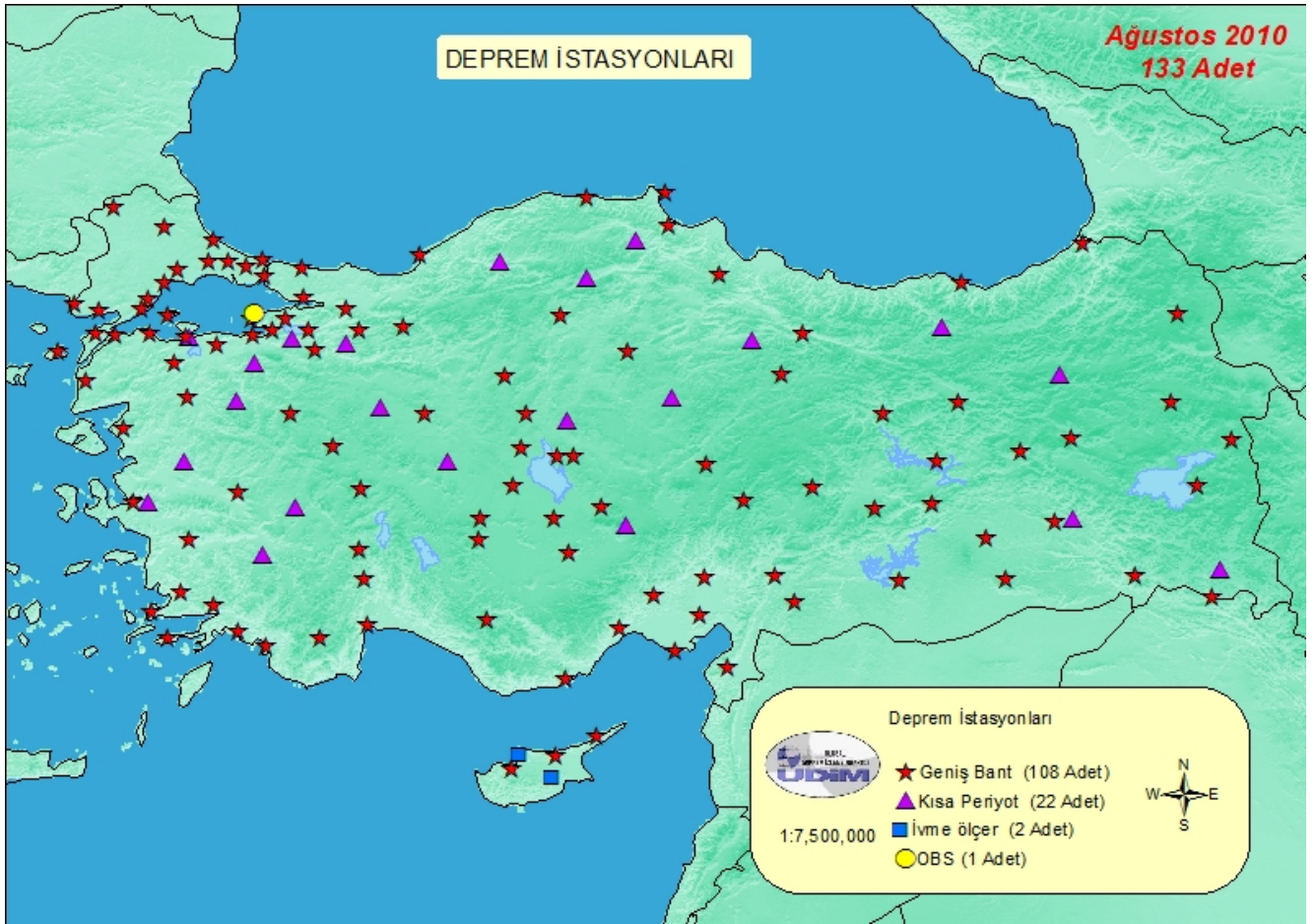
TÜRKİYE VE YAKIN ÇEVRESİ M ≥ 4.0 OLAN DEPREMLER : 10 Adet



TÜRKİYE VE YAKIN ÇEVRESİ DEPREM ETKİNLİĞİ Toplam : 977 Adet

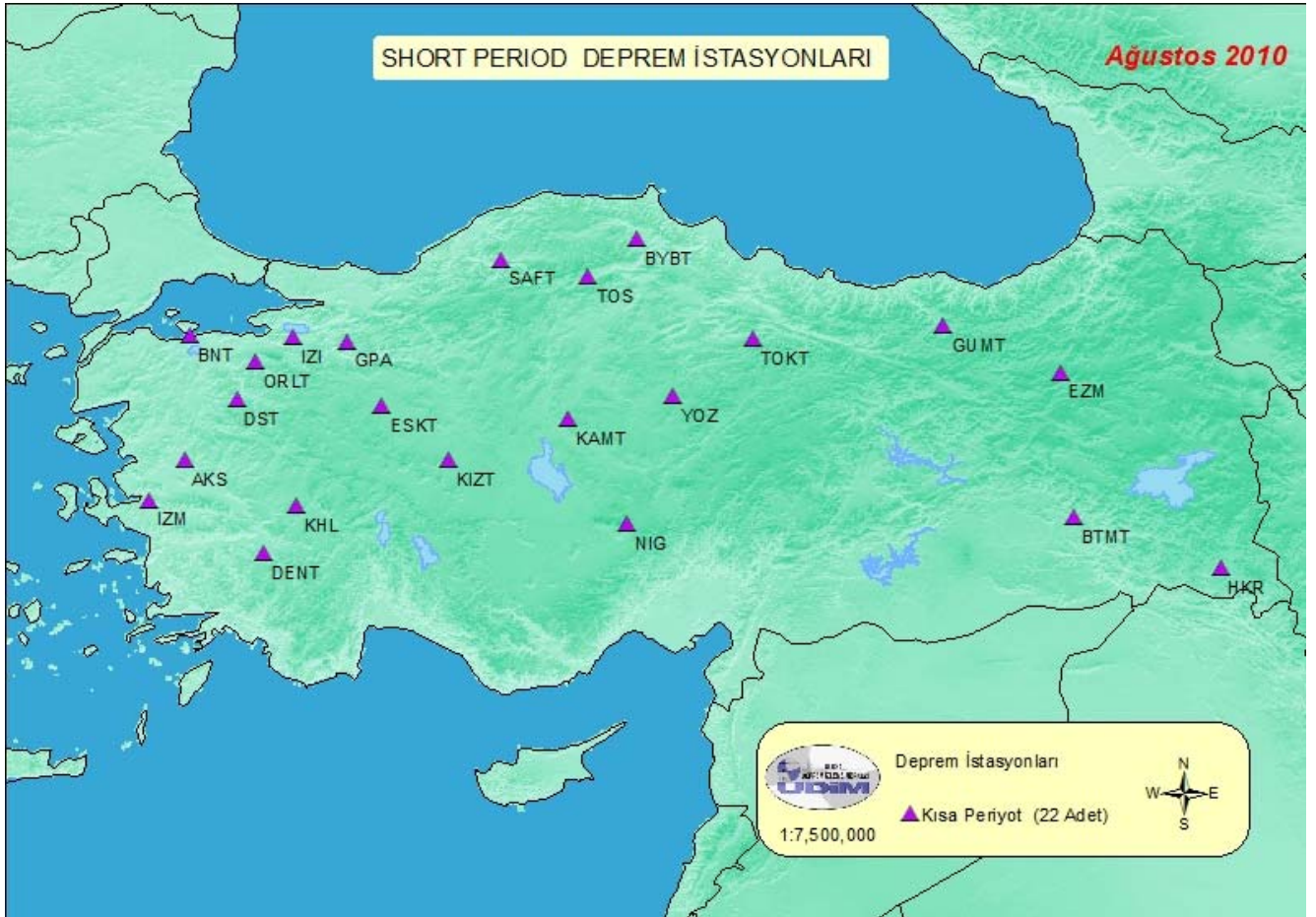


AĞUSTOS 2010
İSTASYON VERİMLİLİK
TABLOLARI

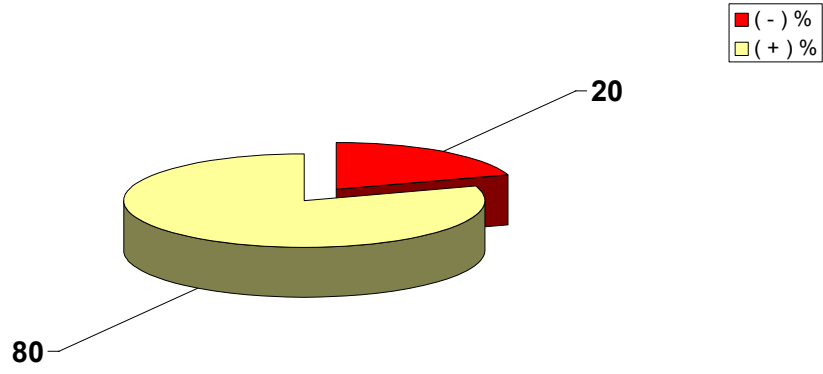


Adet	Yöntem	Kod	(+)adet	(-)adet	TOPLAM GÜN	(+)%	(-)%	(+)%	(-)%
1	1	ADVT	31	0	31	100	0		
2	2	AFSR	31	0	31	100	0		
3	3	AGRB	31	0	31	100	0		
4	4	ALT	6	25	31	19	81		
5	5	ANTB	29	2	31	94	6		
6	6	ARMT	31	0	31	100	0		
7	7	AYDB	31	0	31	100	0		
8	8	BALB	31	0	31	100	0		
9	9	BCA	31	0	31	100	0		
10	10	BCK	31	0	31	100	0		
11	11	BGKT	6	25	31	19	81		
12	12	BLCB	28	3	31	90	10		
13	13	BNGB	31	0	31	100	0		
14	14	BNH	14	17	31	45	55		
15	15	BODY	31	0	31	100	0		
16	16	BZK	25	6	31	81	19		
17	17	CANT	30	1	31	97	3		
18	18	CAVI	31	0	31	100	0		
19	19	CEYT	31	0	31	100	0		
20	20	CHBY	31	0	31	100	0		
21	21	CLDR	26	5	31	84	16		
22	22	CORM	31	0	31	100	0		
23	23	CRLT	31	0	31	100	0		
24	24	CTKS	31	0	31	100	0		
25	25	CTYL	31	0	31	100	0		
26	26	CUKT	25	6	31	81	19		
27	27	DALY	31	0	31	100	0		
28	28	DARE	16	15	31	52	48		
29	29	DAT	8	23	31	26	74		
30	30	DIKM	17	14	31	55	45		
31	31	DKL	31	0	31	100	0		
32	32	DYBB	31	0	31	100	0		
33	33	EDC	31	0	31	100	0		
34	34	EDRB	31	0	31	100	0		
35	35	ELL	31	0	31	100	0		
36	36	ENEZ	31	0	31	100	0		
37	37	EREN	1	30	31	3	97		
38	38	ERIK	31	0	31	100	0		
39	39	ERZN	31	0	31	100	0		
40	40	EZN	31	0	31	100	0		
41	41	FETY	0	31	31	0	100		
42	42	GADA	31	0	31	100	0		
43	43	GAZ	2	29	31	6	94		
44	44	GELI	16	15	31	52	48		
45	45	GEMT	18	13	31	58	42		
46	46	GONE	0	31	31	0	100		
47	47	GULA	31	0	31	100	0		
48	48	GULT	28	3	31	90	10		
49	49	HDMB	31	0	31	100	0		
50	50	HRTX	31	0	31	100	0		
51	51	IKL	0	31	31	0	100		
52	52	ILIC	0	31	31	0	100		
53	53	ISK	31	0	31	100	0		
54	54	ISP	31	0	31	100	0		
55	55	KARA	29	2	31	94	6	80	20
56	56	KARS	31	0	31	100	0		
57	57	KCTX	31	0	31	100	0		
58	58	KDZE	31	0	31	100	0		
59	59	KLYT	31	0	31	100	0		
60	60	KMRS	31	0	31	100	0		
61	61	KONT	31	0	31	100	0		
62	62	KOZT	28	3	31	90	10		
63	63	KRBG	0	31	31	0	100		
64	64	KRTS	31	0	31	100	0		
65	65	KTUT	31	0	31	100	0		
66	66	KULA	31	0	31	100	0		
67	67	KULU	31	0	31	100	0		
68	68	KVT	30	1	31	97	3		
69	69	LADK	0	31	31	0	100		
70	70	LAP	31	0	31	100	0		
71	71	LEF	31	0	31	100	0		
72	72	LFK	31	0	31	100	0		
73	73	LOD	31	0	31	100	0		
74	74	MALT	31	0	31	100	0		
75	75	MAZI	7	24	31	23	77		
76	76	MDNY	31	0	31	100	0		
77	77	MDUB	31	0	31	100	0		
78	78	MERS	31	0	31	100	0		
79	79	MFTX	0	31	31	0	100		
80	80	MLSB	31	0	31	100	0		
81	81	MIRMT	31	0	31	100	0		
82	82	PHRS	31	0	31	100	0		
83	83	PTK	15	16	31	48	52		
84	84	RKY	21	10	31	68	32		
85	85	RSDY	19	12	31	61	39		
86	86	SARI	14	17	31	45	55		
87	87	SERE	31	0	31	100	0		
88	88	SHUT	0	31	31	0	100		
89	89	SILT	30	1	31	97	3		
90	90	SIRT	26	5	31	84	16		
91	91	SLVT	30	1	31	97	3		
92	92	SNOP	18	0	18	100	0		
93	93	SPNC	31	0	31	100	0		
94	94	SULT	31	0	31	100	0		
95	95	SVAN	31	0	31	100	0		
96	96	SVRC	30	1	31	97	3		
97	97	SVRH	31	0	31	100	0		
98	98	SVSK	31	0	31	100	0		
99	99	TAHT	31	0	31	100	0		
100	100	TKR	12	19	31	39	61		
101	101	TVSB	18	13	31	58	42		
102	102	URFA	27	4	31	87	13		
103	103	VANB	11	20	31	35	65		
104	104	VRTB	28	3	31	90	10		
105	105	YAYX	31	0	31	100	0		
106	106	YER	30	1	31	97	3		
107	107	YESY	31	0	31	100	0		
108	108	YLVX	0	31	31	0	100		

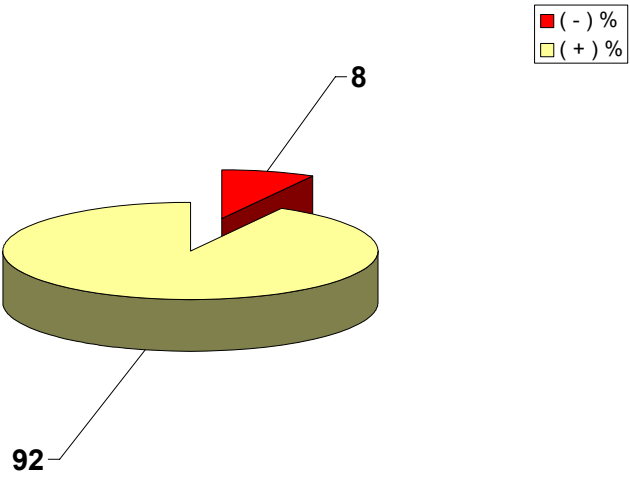
109	1	KISA PERİYOT (SHORT PERIOD) İSTASYONLAR	AKS	27	4	31	87	13	92	8
110	2		BNT	31	0	31	100	0		
111	3		BTMT	30	1	31	97	3		
112	4		BYBT	31	0	31	100	0		
113	5		DENT	31	0	31	100	0		
114	6		DST	31	0	31	100	0		
115	7		ESKT	31	0	31	100	0		
116	8		EZM	31	0	31	100	0		
117	9		GPA	31	0	31	100	0		
118	10		GUMT	27	4	31	87	13		
119	11		HKR	29	2	31	94	6		
120	12		IZI	30	1	31	97	3		
121	13		IZM	0	31	31	0	100		
122	14		KAMT	31	0	31	100	0		
123	15		KHL	31	0	31	100	0		
124	16		KIZT	31	0	31	100	0		
125	17		NIG	31	0	31	100	0		
126	18		ORLT	31	0	31	100	0		
127	19		SAFT	31	0	31	100	0		
128	20		TOKT	19	12	31	61	39		
129	21		TOS	31	0	31	100	0		
130	22		YOZ	31	0	31	100	0		
131	1	İVME ÖLÇER	AKDN	31	0	31	100	0	100	0
132	2		AKIN	31	0	31	100	0		
133	1	OBS	OBO5	31	0	31	100	0	100	0
							+	(-)		
2010 AĞUSTOS ORTALAMA %							83	17		



2010 AĞUSTOS AYI BROAD-BAND İSTASYONLARI VERİMLİLİK GRAFİĞİ



2010 AĞUSTOS AYI SHORT PERIOD İSTASYONLARI VERİMLİLİK GRAFİĞİ



TÜRKİYE DEPREM ETKİNLİĞİ (2010 YILI AĞUSTOS AYI)

No	Tarih - Date			Zaman - Time			Koordinat - Coordinate			Derinlik - Depth		Magnitüd - Magnitude									
	Gün	Ay	Yıl	Saat	Dak.	San.	Enlem-K	Boylam-D	Ref	Km.	Ref	Ms	Ref	Mb	Ref	Md	Ref	MI	Ref	Mw	Ref
1	1	8	2010	0	31	56.6	37.09	28.56	R	3	R					3.0	R				
2	1	8	2010	2	59	24.6	37.80	26.28	R	6	R					2.4	R				
3	1	8	2010	6	2	17.7	37.66	35.96	R	19	R					2.4	R				
4	1	8	2010	6	52	25.6	39.32	32.43	R	5	R					2.4	R				
5	1	8	2010	7	7	35.1	39.49	33.11	R	5	R					2.4	R				
6	1	8	2010	7	47	8.4	40.55	42.25	R	5	R					2.7	R				
7	1	8	2010	7	49	39.8	37.19	28.14	R	22	R					2.3	R				
8	1	8	2010	8	44	51.0	37.26	28.18	R	6	R					2.6	R				
9	1	8	2010	11	23	59.1	39.43	26.34	R	10	R							2.3	R		
10	1	8	2010	11	31	20.8	38.61	44.57	R	3	R							3.1	R		
11	1	8	2010	13	30	3.9	37.53	38.75	R	6	R					2.2	R				
12	1	8	2010	13	36	20.8	39.80	26.06	R	2	R					2.4	R				
13	1	8	2010	13	50	18.1	37.18	28.24	R	14	R							2.3	R		
14	1	8	2010	15	0	17.5	38.42	37.88	R	7	R					2.8	R				
15	1	8	2010	16	3	43.7	36.88	27.75	R	6	R					2.6	R				
16	1	8	2010	17	14	58.6	37.13	27.57	R	3	R					2.8	R				
17	1	8	2010	18	53	3.6	36.84	28.43	R	28	R					2.7	R				
18	1	8	2010	20	0	7.8	38.02	30.86	R	6	R					2.9	R				
19	1	8	2010	20	23	17.2	37.55	42.22	R	12	R					2.7	R				
20	1	8	2010	23	33	15.4	36.56	28.16	R	11	R					2.7	R				

TÜRKİYE DEPREM ETKİNLİĞİ (2010 YILI AĞUSTOS AYI)

No	Tarih - Date			Zaman - Time			Koordinat - Coordinate			Derinlik - Depth		Magnitüd - Magnitude									
	Gün	Ay	Yıl	Saat	Dak.	San.	Enlem-K	Boylam-D	Ref	Km.	Ref	Ms	Ref	Mb	Ref	Md	Ref	MI	Ref	Mw	Ref
21	1	8	2010	23	50	55.5	38.72	40.00	R	7	R					2.9	R				
22	2	8	2010	0	3	29.7	38.36	39.19	R	8	R					2.6	R				
23	2	8	2010	0	33	45.6	38.96	27.35	R	5	R					2.7	R				
24	2	8	2010	2	11	32.1	38.03	30.90	R	6	R					2.9	R				
25	2	8	2010	3	33	28.0	37.78	30.73	R	16	R					2.9	R				
26	2	8	2010	3	40	27.6	39.27	28.34	R	5	R					2.7	R				
27	2	8	2010	3	52	10.4	40.84	35.15	R	17	R					2.8	R				
28	2	8	2010	3	54	38.0	39.22	28.44	R	17	R					2.6	R				
29	2	8	2010	7	13	7.8	37.72	27.90	R	5	R					1.9	R				
30	2	8	2010	7	22	5.2	39.03	27.52	R	11	R					2.7	R				
31	2	8	2010	7	29	57.4	38.98	27.19	R	26	R					2.7	R				
32	2	8	2010	8	18	5.2	39.27	28.33	R	4	R					2.8	R				
33	2	8	2010	8	50	56.6	39.54	29.83	R	10	R					2.4	R				
34	2	8	2010	9	6	42.2	39.50	28.18	R	18	R					2.9	R				
35	2	8	2010	9	23	33.6	40.70	26.32	R	3	R					2.2	R				
36	2	8	2010	9	44	5.8	35.66	26.95	R	3	R							2.9	R		
37	2	8	2010	9	48	10.1	37.10	27.88	R	6	R					2.3	R				
38	2	8	2010	9	50	6.6	37.04	27.92	R	5	R					2.3	R				
39	2	8	2010	11	0	5.7	37.16	27.90	R	8	R					2.4	R				
40	2	8	2010	11	18	38.0	38.82	28.00	R	12	R					2.3	R				

TÜRKİYE DEPREM ETKİNLİĞİ (2010 YILI AĞUSTOS AYI)

No	Tarih - Date			Zaman - Time			Koordinat - Coordinate			Derinlik - Depth		Magnitüd - Magnitude									
	Gün	Ay	Yıl	Saat	Dak.	San.	Enlem-K	Boylam-D	Ref	Km.	Ref	Ms	Ref	Mb	Ref	Md	Ref	MI	Ref	Mw	Ref
41	2	8	2010	12	8	11.2	37.20	38.91	R	5	R					2.5	R				
42	2	8	2010	12	56	4.0	37.29	28.24	R	5	R					2.5	R				
43	2	8	2010	13	8	24.1	37.25	28.24	R	6	R					2.5	R				
44	2	8	2010	13	8	59.8	37.83	26.50	R	5	R					2.6	R				
45	2	8	2010	13	19	24.9	37.86	26.53	R	14	R					2.7	R				
46	2	8	2010	13	27	37.1	37.28	28.22	R	5	R					2.4	R				
47	2	8	2010	13	35	51.0	37.18	28.11	R	2	R					2.5	R				
48	2	8	2010	14	14	57.1	40.29	29.07	R	5	R					2.1	R				
49	2	8	2010	14	17	3.1	37.63	34.72	R	16	R					2.4	R				
50	2	8	2010	14	25	48.8	37.24	28.31	R	16	R					2.4	R				
51	2	8	2010	14	29	41.8	39.53	29.74	R	7	R					2.3	R				
52	2	8	2010	14	30	2.4	39.46	31.04	R	2	R					2.6	R				
53	2	8	2010	14	48	21.9	39.49	29.72	R	5	R					2.6	R				
54	2	8	2010	14	53	17.8	37.21	28.22	R	3	R					2.4	R				
55	2	8	2010	15	30	12.3	39.54	28.74	R	13	R					2.6	R				
56	2	8	2010	15	48	31.3	38.73	39.29	R	21	R					2.2	R				
57	2	8	2010	15	56	17.9	39.27	28.35	R	5	R					2.7	R				
58	2	8	2010	16	0	9.8	36.99	35.69	R	5	R					2.2	R				
59	2	8	2010	16	2	9.5	40.34	27.87	R	5	R					2.6	R				
60	2	8	2010	16	13	29.4	37.33	37.58	R	15	R					2.7	R				

TÜRKİYE DEPREM ETKİNLİĞİ (2010 YILI AĞUSTOS AYI)

No	Tarih - Date			Zaman - Time			Koordinat - Coordinate			Derinlik - Depth		Magnitüd - Magnitude									
	Gün	Ay	Yıl	Saat	Dak.	San.	Enlem-K	Boylam-D	Ref	Km.	Ref	Ms	Ref	Mb	Ref	Md	Ref	MI	Ref	Mw	Ref
61	2	8	2010	17	16	47.6	40.32	29.14	R	12	R					2.5	R				
62	2	8	2010	17	25	57.1	35.30	26.38	N	36	N			4.3	N						
63	2	8	2010	23	5	51.2	37.28	27.60	R	5	R					2.7	R				
64	2	8	2010	23	15	26.4	39.54	27.96	R	7	R					2.8	R				
65	2	8	2010	23	34	48.6	37.28	27.57	R	5	R					2.6	R				
66	3	8	2010	2	4	49.8	40.01	39.01	R	9	R					2.7	R				
67	3	8	2010	2	38	52.4	36.13	28.63	R	15	R					2.8	R				
68	3	8	2010	4	53	25.6	36.88	36.56	R	5	R					2.4	R				
69	3	8	2010	4	56	49.8	37.28	28.24	R	12	R					2.5	R				
70	3	8	2010	5	25	3.4	40.36	25.88	R	8	R					2.7	R				
71	3	8	2010	6	27	10.6	37.23	28.15	R	4	R					2.6	R				
72	3	8	2010	7	8	21.5	37.22	28.15	R	13	R					2.7	R				
73	3	8	2010	9	1	5.6	39.17	27.39	R	11	R					2.6	R				
74	3	8	2010	9	53	43.4	36.88	34.69	R	7	R					2.3	R				
75	3	8	2010	10	4	19.2	37.96	27.21	R	27	R					2.6	R				
76	3	8	2010	10	19	23.1	38.44	38.00	R	9	R					2.6	R				
77	3	8	2010	10	37	56.1	39.88	31.95	R	5	R					2.5	R				
78	3	8	2010	11	26	17.7	39.47	30.11	R	16	R					2.7	R				
79	3	8	2010	14	22	38.6	38.15	33.19	R	7	R					2.6	R				
80	3	8	2010	14	44	32.4	37.21	28.24	R	8	R					2.4	R				

TÜRKİYE DEPREM ETKİNLİĞİ (2010 YILI AĞUSTOS AYI)

No	Tarih - Date			Zaman - Time			Koordinat - Coordinate			Derinlik - Depth		Magnitüd - Magnitude									
	Gün	Ay	Yıl	Saat	Dak.	San.	Enlem-K	Boylam-D	Ref	Km.	Ref	Ms	Ref	Mb	Ref	Md	Ref	MI	Ref	Mw	Ref
81	3	8	2010	14	53	14.1	37.25	28.21	R	6	R					2.7	R				
82	3	8	2010	14	56	1.5	37.22	28.19	R	5	R					2.4	R				
83	3	8	2010	15	10	3.7	39.90	29.18	R	5	R					2.7	R				
84	3	8	2010	15	20	19.6	38.09	27.34	R	3	R					2.6	R				
85	3	8	2010	15	22	37.6	39.90	29.18	R	8	R					2.6	R				
86	3	8	2010	17	7	41.9	40.91	38.86	R	10	R					2.7	R				
87	3	8	2010	18	27	55.4	37.25	27.64	R	5	R					2.7	R				
88	3	8	2010	21	9	4.5	40.81	28.12	R	13	R					2.8	R				
89	3	8	2010	21	16	47.3	40.60	34.69	R	7	R					2.8	R				
90	3	8	2010	21	51	52.3	37.63	29.79	R	6	R					2.7	R				
91	3	8	2010	22	3	26.7	37.63	29.81	R	9	R					2.8	R				
92	3	8	2010	22	4	5.5	37.57	30.11	R	9	R					2.4	R				
93	3	8	2010	23	10	16.7	40.23	31.82	R	5	R					2.8	R				
94	4	8	2010	0	4	25.6	38.74	30.63	R	6	R					2.6	R				
95	4	8	2010	0	7	34.7	38.98	26.90	R	15	R					2.5	R				
96	4	8	2010	2	0	40.9	40.37	27.19	R	9	R					3.0	R				
97	4	8	2010	4	52	16.0	39.00	27.93	R	5	R					2.6	R				
98	4	8	2010	4	57	59.7	39.11	29.12	R	5	R					2.8	R				
99	4	8	2010	5	26	31.2	39.35	41.13	R	5	R					2.5	R				
100	4	8	2010	5	34	8.6	37.24	28.23	R	8	R					2.6	R				

TÜRKİYE DEPREM ETKİNLİĞİ (2010 YILI AĞUSTOS AYI)

No	Tarih - Date			Zaman - Time			Koordinat - Coordinate			Derinlik - Depth		Magnitüd - Magnitude									
	Gün	Ay	Yıl	Saat	Dak.	San.	Enlem-K	Boylam-D	Ref	Km.	Ref	Ms	Ref	Mb	Ref	Md	Ref	MI	Ref	Mw	Ref
101	4	8	2010	6	42	15.1	37.24	28.18	R	3	R					2.6	R				
102	4	8	2010	7	6	17.3	37.05	28.82	R	6	R					3.0	R				
103	4	8	2010	7	16	17.5	36.96	28.84	R	14	R					2.7	R				
104	4	8	2010	8	50	29.0	38.80	25.69	R	10	R							3.0	R		
105	4	8	2010	8	58	8.1	37.01	28.87	R	14	R					2.4	R				
106	4	8	2010	9	26	6.5	37.24	28.20	R	10	R					2.5	R				
107	4	8	2010	10	22	51.5	37.48	26.95	R	11	R					2.5	R				
108	4	8	2010	10	51	38.2	36.87	34.45	R	8	R					2.3	R				
109	4	8	2010	10	55	42.9	40.43	27.52	R	6	R							2.4	R		
110	4	8	2010	11	9	37.3	39.23	35.20	R	6	R					3.5	R				
111	4	8	2010	11	32	28.1	38.45	33.96	R	5	R							3.2	R		
112	4	8	2010	12	5	18.8	39.63	27.90	R	4	R					2.9	R				
113	4	8	2010	12	15	43.1	39.58	40.20	R	7	R					2.7	R				
114	4	8	2010	12	37	11.6	39.91	29.19	R	5	R					2.7	R				
115	4	8	2010	13	18	50.0	38.78	31.73	R	5	R					2.8	R				
116	4	8	2010	14	14	2.4	37.00	29.01	R	6	R					2.8	R				
117	4	8	2010	14	20	5.2	39.99	37.41	R	7	R					2.8	R				
118	4	8	2010	14	33	34.8	37.31	28.08	R	19	R					2.4	R				
119	4	8	2010	14	35	22.3	38.25	36.97	R	23	R					2.7	R				
120	4	8	2010	14	44	8.2	37.20	28.17	R	5	R					2.5	R				

TÜRKİYE DEPREM ETKİNLİĞİ (2010 YILI AĞUSTOS AYI)

No	Tarih - Date			Zaman - Time			Koordinat - Coordinate			Derinlik - Depth		Magnitüd - Magnitude									
	Gün	Ay	Yıl	Saat	Dak.	San.	Enlem-K	Boylam-D	Ref	Km.	Ref	Ms	Ref	Mb	Ref	Md	Ref	MI	Ref	Mw	Ref
121	4	8	2010	14	58	57.7	39.23	27.62	R	24	R					2.5	R				
122	4	8	2010	15	36	59.0	39.93	29.10	R	8	R					2.7	R				
123	4	8	2010	16	23	45.5	39.88	30.12	R	4	R					2.9	R				
124	4	8	2010	18	11	9.3	39.68	38.69	R	9	R					2.8	R				
125	4	8	2010	18	24	0.0	37.02	28.84	R	10	R					2.9	R				
126	4	8	2010	18	57	7.8	37.04	28.86	R	5	R					3.0	R				
127	4	8	2010	19	21	23.8	37.01	28.85	R	16	R					2.7	R				
128	4	8	2010	19	24	49.8	37.05	28.83	R	5	R					2.6	R				
129	4	8	2010	19	29	14.6	37.02	28.86	R	3	R							3.1	R		
130	4	8	2010	19	37	3.7	37.06	28.85	R	8	R					2.8	R				
131	4	8	2010	20	24	53.7	39.43	39.37	R	14	R					2.5	R				
132	4	8	2010	20	38	42.5	37.53	26.98	R	5	R							3.7	R		
133	4	8	2010	20	58	13.6	37.02	28.90	R	5	R					3.0	R				
134	4	8	2010	21	14	42.9	37.01	28.73	R	22	R					2.7	R				
135	4	8	2010	22	44	52.0	37.03	28.86	R	8	R					2.9	R				
136	4	8	2010	22	50	27.6	39.40	39.03	R	8	R					2.9	R				
137	5	8	2010	1	5	12.6	39.39	39.53	R	9	R					2.6	R				
138	5	8	2010	1	8	52.0	37.01	28.91	R	5	R					2.9	R				
139	5	8	2010	1	11	55.5	36.89	27.48	R	18	R					2.8	R				
140	5	8	2010	1	21	3.2	36.93	28.91	R	14	R					2.9	R				

TÜRKİYE DEPREM ETKİNLİĞİ (2010 YILI AĞUSTOS AYI)

No	Tarih - Date			Zaman - Time			Koordinat - Coordinate			Derinlik - Depth		Magnitüd - Magnitude									
	Gün	Ay	Yıl	Saat	Dak.	San.	Enlem-K	Boylam-D	Ref	Km.	Ref	Ms	Ref	Mb	Ref	Md	Ref	MI	Ref	Mw	Ref
141	5	8	2010	1	41	48.7	37.02	28.79	R	8	R					2.8	R				
142	5	8	2010	1	50	6.9	37.73	25.34	R	16	R							3.1	R		
143	5	8	2010	1	52	29.0	36.96	27.89	R	18	R					2.5	R				
144	5	8	2010	1	58	43.8	37.03	28.89	R	5	R							3.0	R		
145	5	8	2010	2	5	17.8	38.95	27.91	R	6	R					2.7	R				
146	5	8	2010	2	26	12.7	36.98	28.81	R	20	R					2.7	R				
147	5	8	2010	3	7	11.5	37.04	28.90	R	7	R					3.1	R				
148	5	8	2010	3	17	23.4	37.02	28.84	R	5	R					2.7	R				
149	5	8	2010	3	23	36.3	35.21	25.71	R	40	R					3.3	R				
150	5	8	2010	3	56	21.0	36.97	28.94	R	6	R					2.7	R				
151	5	8	2010	4	18	16.8	38.74	33.51	R	12	R					2.2	R				
152	5	8	2010	4	41	57.4	37.71	25.45	R	9	R					3.1	R				
153	5	8	2010	4	50	43.6	35.79	31.25	R	9	R					3.3	R				
154	5	8	2010	5	8	45.2	38.91	29.94	R	5	R					2.8	R				
155	5	8	2010	5	9	48.3	37.30	36.04	R	10	R					2.2	R				
156	5	8	2010	5	31	13.4	37.56	35.61	R	4	R			4.4	N			4.1	R		
157	5	8	2010	7	7	50.6	37.22	28.22	R	13	R					2.5	R				
158	5	8	2010	7	14	44.5	37.03	28.89	R	5	R					2.9	R				
159	5	8	2010	7	31	31.2	41.00	34.40	R	5	R					2.6	R				
160	5	8	2010	7	32	47.7	37.01	28.52	R	6	R					2.7	R				

TÜRKİYE DEPREM ETKİNLİĞİ (2010 YILI AĞUSTOS AYI)

No	Tarih - Date			Zaman - Time			Koordinat - Coordinate			Derinlik - Depth		Magnitüd - Magnitude									
	Gün	Ay	Yıl	Saat	Dak.	San.	Enlem-K	Boylam-D	Ref	Km.	Ref	Ms	Ref	Mb	Ref	Md	Ref	MI	Ref	Mw	Ref
161	5	8	2010	7	42	9.2	36.98	28.89	R	16	R					2.8	R				
162	5	8	2010	8	7	36.8	38.99	32.06	R	24	R					2.4	R				
163	5	8	2010	8	22	33.3	39.70	30.79	R	13	R					2.6	R				
164	5	8	2010	8	33	3.3	37.05	28.31	R	28	R					2.3	R				
165	5	8	2010	9	18	46.1	37.22	28.29	R	14	R					2.7	R				
166	5	8	2010	9	25	0.8	37.16	34.03	R	5	R					2.7	R				
167	5	8	2010	9	30	27.8	37.24	28.02	R	29	R					2.6	R				
168	5	8	2010	9	54	34.1	40.57	36.50	R	8	R					2.8	R				
169	5	8	2010	10	20	44.6	37.00	28.96	R	7	R					2.4	R				
170	5	8	2010	11	44	35.5	39.42	34.68	R	5	R					2.5	R				
171	5	8	2010	11	52	20.1	40.12	29.50	R	20	R					2.4	R				
172	5	8	2010	12	49	55.6	37.23	28.20	R	11	R					2.6	R				
173	5	8	2010	13	21	11.1	40.24	34.97	R	5	R					2.6	R				
174	5	8	2010	13	24	25.2	39.66	29.01	R	11	R					2.5	R				
175	5	8	2010	13	37	30.2	39.90	29.91	R	11	R					2.5	R				
176	5	8	2010	13	51	59.9	40.04	37.93	R	8	R					3.0	R				
177	5	8	2010	14	5	30.7	37.19	28.16	R	2	R					2.5	R				
178	5	8	2010	14	29	1.9	38.95	27.65	R	5	R					2.4	R				
179	5	8	2010	15	3	38.4	39.44	38.56	R	6	R					2.6	R				
180	5	8	2010	15	11	57.9	39.90	29.18	R	5	R					2.7	R				

TÜRKİYE DEPREM ETKİNLİĞİ (2010 YILI AĞUSTOS AYI)

No	Tarih - Date			Zaman - Time			Koordinat - Coordinate			Derinlik - Depth		Magnitüd - Magnitude									
	Gün	Ay	Yıl	Saat	Dak.	San.	Enlem-K	Boylam-D	Ref	Km.	Ref	Ms	Ref	Mb	Ref	Md	Ref	MI	Ref	Mw	Ref
181	5	8	2010	15	16	52.0	37.24	28.26	R	10	R					2.4	R				
182	5	8	2010	15	42	37.6	37.90	35.56	R	5	R					2.7	R				
183	5	8	2010	15	48	19.8	37.35	37.60	R	12	R					2.8	R				
184	5	8	2010	16	6	57.1	38.73	35.79	R	10	R					2.8	R				
185	5	8	2010	20	21	40.6	37.25	27.64	R	5	R					2.9	R				
186	5	8	2010	21	52	32.0	37.26	27.66	R	5	R					2.0	R				
187	5	8	2010	22	12	12.2	38.20	26.92	R	16	R					2.5	R				
188	5	8	2010	22	15	13.0	40.51	27.39	R	5	R					2.3	R				
189	5	8	2010	22	56	23.8	40.95	43.34	R	7	R					2.8	R				
190	5	8	2010	23	22	55.2	38.89	40.13	R	18	R					2.4	R				
191	6	8	2010	0	0	35.8	38.83	40.11	R	7	R					2.8	R				
192	6	8	2010	0	10	45.2	37.25	35.60	R	8	R					2.8	R				
193	6	8	2010	0	23	39.7	35.25	26.90	R	20	R					3.3	R				
194	6	8	2010	2	37	47.5	34.32	25.04	N	38	N			4.8	N						
195	6	8	2010	2	43	14.5	40.61	29.21	R	4	R					3.0	R				
196	6	8	2010	2	44	27.8	38.17	39.36	R	6	R					2.7	R				
197	6	8	2010	3	23	25.9	37.12	28.67	R	8	R					2.8	R				
198	6	8	2010	3	51	2.5	35.18	26.90	R	8	R					3.4	R				
199	6	8	2010	6	10	50.7	37.27	28.23	R	17	R					2.5	R				
200	6	8	2010	8	2	48.2	39.76	25.95	R	12	R					3.0	R				

TÜRKİYE DEPREM ETKİNLİĞİ (2010 YILI AĞUSTOS AYI)

No	Tarih - Date			Zaman - Time			Koordinat - Coordinate			Derinlik - Depth		Magnitüd - Magnitude									
	Gün	Ay	Yıl	Saat	Dak.	San.	Enlem-K	Boylam-D	Ref	Km.	Ref	Ms	Ref	Mb	Ref	Md	Ref	MI	Ref	Mw	Ref
201	6	8	2010	8	37	6.1	40.20	30.02	R	18	R					2.3	R				
202	6	8	2010	8	53	18.7	37.20	28.15	R	7	R					2.7	R				
203	6	8	2010	8	56	55.0	39.91	29.18	R	16	R					2.4	R				
204	6	8	2010	9	9	16.4	34.99	26.82	R	22	R					3.5	R	2.8	R		
205	6	8	2010	9	44	23.6	37.26	28.42	R	5	R					2.4	R				
206	6	8	2010	9	46	39.2	40.06	42.29	R	30	R					2.8	R				
207	6	8	2010	11	0	43.7	40.28	29.13	R	5	R					2.8	R				
208	6	8	2010	12	1	14.4	39.43	31.41	R	12	R					2.2	R				
209	6	8	2010	12	2	57.0	40.73	26.22	R	2	R					2.5	R				
210	6	8	2010	12	44	29.5	41.66	35.56	R	6	R							2.4	R		
211	6	8	2010	13	22	33.4	38.24	34.12	R	14	R					2.7	R				
212	6	8	2010	13	40	52.5	39.96	27.40	R	10	R					2.7	R				
213	6	8	2010	14	19	3.0	37.16	27.89	R	11	R					2.5	R				
214	6	8	2010	14	23	51.9	38.99	40.92	R	8	R					2.9	R				
215	6	8	2010	14	47	52.2	37.17	28.31	R	15	R					2.7	R				
216	6	8	2010	16	32	29.1	39.20	27.66	R	29	R					3.1	R				
217	6	8	2010	16	50	36.5	37.08	36.52	R	5	R					2.7	R				
218	6	8	2010	17	29	40.0	40.93	26.55	R	17	R					2.6	R				
219	6	8	2010	17	30	4.5	38.82	40.13	R	5	R					2.7	R				
220	6	8	2010	17	56	3.8	38.80	25.43	R	17	R					3.0	R				

TÜRKİYE DEPREM ETKİNLİĞİ (2010 YILI AĞUSTOS AYI)

No	Tarih - Date			Zaman - Time			Koordinat - Coordinate			Derinlik - Depth		Magnitüd - Magnitude									
	Gün	Ay	Yıl	Saat	Dak.	San.	Enlem-K	Boylam-D	Ref	Km.	Ref	Ms	Ref	Mb	Ref	Md	Ref	MI	Ref	Mw	Ref
221	6	8	2010	18	9	15.1	38.31	27.39	R	5	R					2.6	R				
222	6	8	2010	19	8	19.5	39.43	39.08	R	6	R					2.7	R				
223	6	8	2010	20	41	39.4	37.55	35.68	R	5	R					2.7	R				
224	6	8	2010	21	46	44.5	39.54	26.10	R	7	R					2.8	R				
225	6	8	2010	21	49	36.1	39.55	26.15	R	7	R					2.6	R				
226	6	8	2010	22	12	50.0	38.22	30.79	R	6	R					3.0	R				
227	6	8	2010	23	8	34.7	37.56	27.34	R	23	R					2.7	R				
228	6	8	2010	23	33	17.1	39.55	26.06	R	9	R					2.4	R				
229	7	8	2010	0	2	49.7	38.90	27.99	R	7	R							2.6	R		
230	7	8	2010	0	5	1.3	38.92	28.01	R	6	R					2.9	R				
231	7	8	2010	0	50	57.4	39.10	27.26	R	9	R					2.8	R				
232	7	8	2010	1	38	38.4	39.10	40.57	R	8	R					2.8	R				
233	7	8	2010	1	38	46.8	37.66	25.49	R	24	R					2.5	R				
234	7	8	2010	3	33	1.7	36.47	28.07	R	28	R					2.7	R				
235	7	8	2010	5	17	6.2	39.98	28.07	R	7	R					2.8	R				
236	7	8	2010	6	2	10.3	37.21	28.33	R	10	R					2.4	R				
237	7	8	2010	7	13	40.5	39.30	25.98	R	5	R					2.8	R				
238	7	8	2010	7	18	30.5	39.04	27.61	R	10	R					2.6	R				
239	7	8	2010	7	21	21.5	39.42	33.10	R	5	R					2.7	R				
240	7	8	2010	7	32	14.4	37.77	39.07	R	29	R					2.8	R				

TÜRKİYE DEPREM ETKİNLİĞİ (2010 YILI AĞUSTOS AYI)

No	Tarih - Date			Zaman - Time			Koordinat - Coordinate			Derinlik - Depth		Magnitüd - Magnitude									
	Gün	Ay	Yıl	Saat	Dak.	San.	Enlem-K	Boylam-D	Ref	Km.	Ref	Ms	Ref	Mb	Ref	Md	Ref	MI	Ref	Mw	Ref
241	7	8	2010	7	39	29.0	37.35	28.29	R	5	R					2.5	R				
242	7	8	2010	7	53	20.1	38.00	27.50	R	6	R					2.4	R				
243	7	8	2010	7	59	2.4	36.99	27.94	R	5	R					2.4	R				
244	7	8	2010	8	18	27.0	39.10	27.75	R	6	R					2.7	R				
245	7	8	2010	8	42	39.4	37.23	28.22	R	6	R					2.7	R				
246	7	8	2010	8	51	1.4	37.24	28.21	R	10	R					2.6	R				
247	7	8	2010	9	12	7.8	37.41	28.08	R	18	R					2.4	R				
248	7	8	2010	9	27	59.8	40.77	26.36	R	2	R					2.5	R				
249	7	8	2010	9	51	56.9	37.65	35.44	R	12	R					2.5	R				
250	7	8	2010	9	52	43.5	38.46	39.54	R	9	R					2.6	R				
251	7	8	2010	10	31	47.3	37.78	32.23	R	5	R					2.6	R				
252	7	8	2010	10	38	23.3	36.57	40.27	R	5	R					3.4	R				
253	7	8	2010	11	42	8.6	38.42	39.65	R	12	R					2.5	R				
254	7	8	2010	11	43	41.4	40.12	28.10	R	6	R					2.7	R				
255	7	8	2010	12	37	26.6	37.78	41.33	R	7	R					2.6	R				
256	7	8	2010	12	39	36.0	37.74	38.04	R	14	R					2.6	R				
257	7	8	2010	13	2	52.0	40.76	27.45	R	10	R					2.6	R				
258	7	8	2010	13	7	45.5	37.48	35.53	R	2	R					2.6	R				
259	7	8	2010	13	20	54.1	37.96	28.96	R	4	R					2.8	R				
260	7	8	2010	14	48	28.8	37.16	28.15	R	5	R					2.6	R				

TÜRKİYE DEPREM ETKİNLİĞİ (2010 YILI AĞUSTOS AYI)

No	Tarih - Date			Zaman - Time			Koordinat - Coordinate			Derinlik - Depth		Magnitüd - Magnitude									
	Gün	Ay	Yıl	Saat	Dak.	San.	Enlem-K	Boylam-D	Ref	Km.	Ref	Ms	Ref	Mb	Ref	Md	Ref	MI	Ref	Mw	Ref
261	7	8	2010	14	57	9.0	40.65	29.14	R	5	R							2.5	R		
262	7	8	2010	15	1	54.5	37.26	28.25	R	4	R					2.6	R				
263	7	8	2010	15	28	44.2	39.29	29.66	R	15	R					2.4	R				
264	7	8	2010	15	34	58.9	37.98	26.73	R	7	R					2.6	R				
265	7	8	2010	15	49	33.9	40.35	27.84	R	4	R					2.3	R				
266	7	8	2010	16	4	19.4	35.88	29.21	R	11	R					2.9	R				
267	7	8	2010	16	56	26.0	39.67	25.62	R	5	R					2.8	R				
268	7	8	2010	17	18	7.6	39.56	27.10	R	9	R							2.7	R		
269	7	8	2010	18	42	9.6	36.89	29.10	R	6	R					2.4	R				
270	7	8	2010	19	22	12.9	39.07	29.15	R	10	R					2.5	R				
271	7	8	2010	21	7	48.4	36.11	31.07	R	19	R					3.4	R				
272	7	8	2010	21	48	24.6	37.00	28.96	R	6	R					2.6	R				
273	7	8	2010	22	40	34.5	38.32	41.83	R	5	R					2.9	R				
274	7	8	2010	23	49	33.4	36.57	29.05	R	7	R					2.7	R				
275	7	8	2010	23	53	26.2	36.97	31.25	R	22	R					3.0	R				
276	8	8	2010	0	24	12.2	36.69	27.93	R	15	R			4.3	N			4.5	R		
277	8	8	2010	2	12	7.2	36.66	27.96	R	14	R							3.3	R		
278	8	8	2010	4	6	36.5	34.91	24.49	N	6	N			4.8	N						
279	8	8	2010	5	21	55.6	37.85	29.48	R	15	R							3.0	R		
280	8	8	2010	5	24	10.8	36.47	28.90	R	4	R							3.5	R		

TÜRKİYE DEPREM ETKİNLİĞİ (2010 YILI AĞUSTOS AYI)

No	Tarih - Date			Zaman - Time			Koordinat - Coordinate			Derinlik - Depth		Magnitüd - Magnitude									
	Gün	Ay	Yıl	Saat	Dak.	San.	Enlem-K	Boylam-D	Ref	Km.	Ref	Ms	Ref	Mb	Ref	Md	Ref	MI	Ref	Mw	Ref
281	8	8	2010	5	34	5.8	38.76	31.26	R	21	R					3.0	R				
282	8	8	2010	6	14	26.1	37.22	28.20	R	5	R					2.6	R				
283	8	8	2010	7	10	22.0	37.22	28.19	R	5	R					2.7	R				
284	8	8	2010	7	25	16.8	38.50	34.13	R	4	R					2.2	R				
285	8	8	2010	8	48	47.1	37.23	28.22	R	7	R					2.6	R				
286	8	8	2010	9	0	28.0	40.55	23.56	N	22	N							4.4	N		
287	8	8	2010	9	8	31.2	39.93	40.93	R	12	R					2.6	R				
288	8	8	2010	9	14	59.2	40.55	23.58	N	23	N							2.0	R		
289	8	8	2010	9	17	24.7	37.16	37.12	R	9	R			4.6	N						
290	8	8	2010	10	49	0.4	39.85	24.55	R	5	R					3.6	R				
291	8	8	2010	11	14	13.7	38.94	33.63	R	3	R					2.8	R				
292	8	8	2010	11	14	32.2	37.90	26.78	R	7	R							3.3	R		
293	8	8	2010	11	45	18.1	37.23	28.19	R	8	R							2.1	R		
294	8	8	2010	11	51	47.3	36.59	28.01	R	26	R							2.4	R		
295	8	8	2010	13	26	25.9	37.15	28.24	R	17	R							2.2	R		
296	8	8	2010	13	32	35.6	39.42	30.32	R	4	R							2.0	R		
297	8	8	2010	14	45	18.8	37.25	28.20	R	7	R					2.7	R				
298	8	8	2010	17	33	47.6	39.46	33.08	R	7	R					2.6	R				
299	8	8	2010	19	33	29.1	37.10	27.64	R	15	R					2.7	R				
300	8	8	2010	21	34	50.5	37.57	35.61	R	5	R					3.3	R				

TÜRKİYE DEPREM ETKİNLİĞİ (2010 YILI AĞUSTOS AYI)

No	Tarih - Date			Zaman - Time			Koordinat - Coordinate			Derinlik - Depth		Magnitüd - Magnitude									
	Gün	Ay	Yıl	Saat	Dak.	San.	Enlem-K	Boylam-D	Ref	Km.	Ref	Ms	Ref	Mb	Ref	Md	Ref	MI	Ref	Mw	Ref
301	8	8	2010	22	35	8.1	38.75	31.73	R	5	R					2.9	R				
302	9	8	2010	0	52	53.3	38.97	29.76	R	4	R					2.9	R				
303	9	8	2010	1	27	9.9	35.90	31.24	R	33	R							3.2	R		
304	9	8	2010	1	54	32.8	39.45	33.07	R	5	R					3.0	R				
305	9	8	2010	4	6	16.7	38.57	26.98	R	8	R					2.8	R				
306	9	8	2010	6	32	6.6	37.30	28.20	R	5	R					2.5	R				
307	9	8	2010	7	37	39.8	37.24	28.17	R	5	R					2.7	R				
308	9	8	2010	8	45	1.2	37.26	28.20	R	2	R					2.5	R				
309	9	8	2010	9	4	32.4	37.42	38.57	R	8	R					2.4	R				
310	9	8	2010	9	18	54.6	39.89	29.18	R	6	R					2.7	R				
311	9	8	2010	11	2	26.9	41.13	34.49	R	5	R					2.1	R				
312	9	8	2010	11	15	11.1	39.23	35.76	R	10	R							2.6	R		
313	9	8	2010	11	26	58.7	35.95	30.97	R	31	R					3.4	R				
314	9	8	2010	11	45	33.3	35.04	33.10	R	29	R					2.4	R				
315	9	8	2010	13	11	10.9	37.24	27.23	R	19	R					2.5	R				
316	9	8	2010	13	13	29.5	37.05	27.18	R	20	R					1.9	R				
317	9	8	2010	13	38	13.2	38.66	35.27	R	18	R					2.7	R				
318	9	8	2010	13	51	8.6	38.75	39.18	R	5	R					2.4	R				
319	9	8	2010	14	38	45.8	40.37	27.13	R	8	R					2.7	R				
320	9	8	2010	14	51	25.4	37.25	28.20	R	7	R					2.6	R				

TÜRKİYE DEPREM ETKİNLİĞİ (2010 YILI AĞUSTOS AYI)

No	Tarih - Date			Zaman - Time			Koordinat - Coordinate			Derinlik - Depth		Magnitüd - Magnitude									
	Gün	Ay	Yıl	Saat	Dak.	San.	Enlem-K	Boylam-D	Ref	Km.	Ref	Ms	Ref	Mb	Ref	Md	Ref	MI	Ref	Mw	Ref
321	9	8	2010	14	56	24.5	37.82	38.39	R	3	R					2.5	R				
322	9	8	2010	15	23	37.3	40.45	37.61	R	5	R					2.9	R				
323	9	8	2010	16	7	24.6	39.11	34.22	R	17	R					2.5	R				
324	9	8	2010	16	10	54.8	38.34	38.02	R	15	R					2.3	R				
325	9	8	2010	16	13	30.9	39.92	29.20	R	6	R					2.6	R				
326	9	8	2010	16	24	36.9	38.41	34.12	R	12	R					2.4	R				
327	9	8	2010	16	54	19.8	39.73	27.89	R	2	R					2.7	R				
328	9	8	2010	18	57	44.7	39.53	37.98	R	8	R					2.8	R				
329	9	8	2010	19	14	16.4	37.92	26.85	R	9	R					2.9	R				
330	9	8	2010	21	6	39.2	39.60	38.19	R	16	R					2.6	R				
331	9	8	2010	21	37	5.2	37.91	26.88	R	10	R					2.6	R				
332	9	8	2010	21	39	18.8	38.81	27.87	R	5	R					2.6	R				
333	9	8	2010	21	59	48.9	38.55	40.53	R	10	R					2.7	R				
334	9	8	2010	22	16	21.6	37.83	26.89	R	6	R					2.3	R				
335	10	8	2010	2	31	29.6	37.00	37.29	R	10	R					2.7	R				
336	10	8	2010	3	2	46.5	37.90	26.84	R	5	R					2.8	R				
337	10	8	2010	3	42	6.6	37.82	29.48	R	7	R					2.8	R				
338	10	8	2010	4	4	16.1	39.71	27.88	R	8	R					2.7	R				
339	10	8	2010	4	24	8.5	36.90	34.91	R	31	R					2.6	R				
340	10	8	2010	7	21	40.0	36.26	36.65	R	11	R					3.0	R				

TÜRKİYE DEPREM ETKİNLİĞİ (2010 YILI AĞUSTOS AYI)

No	Tarih - Date			Zaman - Time			Koordinat - Coordinate			Derinlik - Depth		Magnitüd - Magnitude									
	Gün	Ay	Yıl	Saat	Dak.	San.	Enlem-K	Boylam-D	Ref	Km.	Ref	Ms	Ref	Mb	Ref	Md	Ref	MI	Ref	Mw	Ref
341	10	8	2010	7	51	18.8	37.24	28.18	R	5	R					2.9	R				
342	10	8	2010	7	59	22.8	37.93	26.87	R	5	R					2.4	R				
343	10	8	2010	7	59	55.3	37.97	26.95	R	28	R					2.2	R				
344	10	8	2010	8	25	2.1	37.28	28.28	R	2	R					2.8	R				
345	10	8	2010	8	27	11.6	37.69	38.03	R	4	R					2.5	R				
346	10	8	2010	9	24	59.7	39.97	28.08	R	8	R					2.4	R				
347	10	8	2010	10	1	44.7	37.11	28.02	R	9	R					3.3	R				
348	10	8	2010	10	3	35.8	41.67	34.98	R	5	R					2.7	R				
349	10	8	2010	10	5	24.0	37.92	35.57	R	2	R					2.6	R				
350	10	8	2010	10	21	30.4	38.84	27.77	R	6	R					2.5	R				
351	10	8	2010	10	28	48.1	37.04	39.40	R	21	R					2.8	R				
352	10	8	2010	10	36	46.6	40.77	32.58	R	29	R					2.8	R				
353	10	8	2010	11	3	26.6	40.57	29.26	R	6	R					2.8	R				
354	10	8	2010	11	58	11.0	37.58	29.22	R	8	R					2.5	R				
355	10	8	2010	12	10	52.6	37.93	27.58	R	6	R					2.5	R				
356	10	8	2010	12	39	53.5	39.14	29.46	R	5	R					2.8	R				
357	10	8	2010	13	43	9.0	38.59	28.62	R	3	R					2.1	R				
358	10	8	2010	13	46	59.7	40.11	33.87	R	26	R					2.5	R				
359	10	8	2010	17	27	27.6	40.83	27.92	R	12	R					2.6	R				
360	10	8	2010	17	35	53.3	40.86	27.89	R	16	R					2.4	R				

TÜRKİYE DEPREM ETKİNLİĞİ (2010 YILI AĞUSTOS AYI)

No	Tarih - Date			Zaman - Time			Koordinat - Coordinate			Derinlik - Depth		Magnitüd - Magnitude									
	Gün	Ay	Yıl	Saat	Dak.	San.	Enlem-K	Boylam-D	Ref	Km.	Ref	Ms	Ref	Mb	Ref	Md	Ref	MI	Ref	Mw	Ref
361	10	8	2010	18	58	44.0	37.89	29.38	R	28	R					2.6	R				
362	10	8	2010	19	29	33.5	40.22	33.26	R	2	R					2.9	R				
363	10	8	2010	19	57	34.6	38.83	27.80	R	5	R					2.5	R				
364	10	8	2010	20	32	14.4	39.06	35.99	R	16	R					2.7	R				
365	10	8	2010	21	3	18.5	38.88	27.95	R	5	R					2.4	R				
366	10	8	2010	22	33	52.9	38.25	26.80	R	5	R					2.1	R				
367	10	8	2010	23	50	8.9	37.87	26.84	R	6	R					2.8	R	2.7	R		
368	11	8	2010	0	36	13.2	37.91	26.86	R	11	R					2.6	R				
369	11	8	2010	2	9	16.3	37.92	26.82	R	5	R					2.5	R				
370	11	8	2010	2	16	18.6	37.88	26.80	R	6	R							3.6	R		
371	11	8	2010	2	30	40.1	37.91	26.85	R	8	R					2.6	R				
372	11	8	2010	2	45	51.5	37.92	26.88	R	6	R					2.7	R				
373	11	8	2010	4	56	19.0	37.93	26.86	R	5	R					2.9	R				
374	11	8	2010	4	59	52.5	37.41	31.05	R	8	R					2.9	R	2.8	R		
375	11	8	2010	5	13	18.0	37.92	26.88	R	6	R					2.8	R				
376	11	8	2010	6	24	57.2	37.95	26.89	R	5	R							2.7	R		
377	11	8	2010	7	3	4.8	37.93	26.84	R	6	R							2.7	R		
378	11	8	2010	7	12	34.2	37.94	26.89	R	5	R							2.4	R		
379	11	8	2010	7	16	47.8	41.42	44.02	R	4	R							2.7	R		
380	11	8	2010	7	27	30.1	37.27	28.19	R	3	R					2.6	R				

TÜRKİYE DEPREM ETKİNLİĞİ (2010 YILI AĞUSTOS AYI)

No	Tarih - Date			Zaman - Time			Koordinat - Coordinate			Derinlik - Depth		Magnitüd - Magnitude									
	Gün	Ay	Yıl	Saat	Dak.	San.	Enlem-K	Boylam-D	Ref	Km.	Ref	Ms	Ref	Mb	Ref	Md	Ref	MI	Ref	Mw	Ref
381	11	8	2010	8	1	43.1	37.95	26.85	R	17	R							2.9	R		
382	11	8	2010	8	45	38.0	40.38	25.91	R	11	R							2.7	R		
383	11	8	2010	8	55	36.9	40.27	29.99	R	5	R					2.2	R				
384	11	8	2010	9	44	34.3	40.62	26.55	R	10	R					2.0	R				
385	11	8	2010	10	14	40.8	39.38	33.21	R	8	R					2.6	R				
386	11	8	2010	11	56	21.5	38.73	37.48	R	5	R					2.8	R				
387	11	8	2010	12	2	24.9	37.54	38.82	R	2	R					2.4	R				
388	11	8	2010	12	37	34.5	40.21	29.97	R	13	R					2.5	R				
389	11	8	2010	12	48	52.5	40.57	26.28	R	6	R							1.6	R		
390	11	8	2010	12	50	23.0	39.42	37.11	R	5	R							2.3	R		
391	11	8	2010	13	27	53.1	39.24	37.47	R	6	R							2.4	R		
392	11	8	2010	13	42	38.9	37.25	28.18	R	5	R					2.6	R				
393	11	8	2010	13	55	43.5	39.29	40.32	R	18	R					2.7	R				
394	11	8	2010	14	50	51.2	38.71	37.51	R	2	R					2.6	R				
395	11	8	2010	14	53	9.4	38.67	35.68	R	26	R					3.2	R				
396	11	8	2010	14	54	36.3	37.96	26.85	R	6	R					2.5	R				
397	11	8	2010	16	22	4.6	37.24	28.20	R	3	R					2.6	R				
398	11	8	2010	16	45	49.4	37.92	26.83	R	5	R					2.7	R				
399	11	8	2010	17	9	10.6	37.91	26.87	R	5	R					2.7	R				
400	11	8	2010	17	12	52.6	37.96	27.14	R	5	R					2.3	R				

TÜRKİYE DEPREM ETKİNLİĞİ (2010 YILI AĞUSTOS AYI)

No	Tarih - Date			Zaman - Time			Koordinat - Coordinate			Derinlik - Depth		Magnitüd - Magnitude									
	Gün	Ay	Yıl	Saat	Dak.	San.	Enlem-K	Boylam-D	Ref	Km.	Ref	Ms	Ref	Mb	Ref	Md	Ref	MI	Ref	Mw	Ref
401	11	8	2010	17	52	12.9	40.46	28.06	R	5	R					2.7	R				
402	11	8	2010	18	9	35.8	37.94	26.88	R	5	R					2.5	R				
403	11	8	2010	19	34	54.2	40.15	31.86	R	6	R					2.7	R				
404	11	8	2010	19	56	53.1	37.92	26.84	R	5	R					2.5	R				
405	11	8	2010	21	49	13.3	37.93	26.88	R	8	R					2.6	R				
406	11	8	2010	22	8	43.8	37.92	26.88	R	5	R					2.8	R				
407	12	8	2010	0	17	7.7	37.93	26.86	R	5	R					2.6	R				
408	12	8	2010	2	23	4.2	39.69	27.55	R	12	R							4.9	R		
409	12	8	2010	3	1	22.2	37.91	26.85	R	5	R					3.0	R				
410	12	8	2010	3	17	16.0	37.95	26.89	R	4	R					2.9	R				
411	12	8	2010	3	32	37.8	37.92	26.88	R	5	R					3.0	R				
412	12	8	2010	3	34	49.0	37.93	26.85	R	5	R					3.0	R				
413	12	8	2010	3	43	56.2	36.34	36.45	R	6	R					2.5	R				
414	12	8	2010	6	5	19.1	37.93	26.84	R	9	R					2.7	R				
415	12	8	2010	7	20	21.4	37.93	26.87	R	7	R					2.6	R				
416	12	8	2010	7	35	31.4	37.04	29.02	R	13	R					2.6	R				
417	12	8	2010	7	35	39.1	37.91	26.85	R	8	R					2.6	R				
418	12	8	2010	7	36	11.6	38.27	26.95	R	8	R					2.0	R				
419	12	8	2010	7	49	37.1	39.55	28.24	R	5	R					2.5	R				
420	12	8	2010	8	3	13.5	37.95	26.87	R	24	R					2.7	R				

TÜRKİYE DEPREM ETKİNLİĞİ (2010 YILI AĞUSTOS AYI)

No	Tarih - Date			Zaman - Time			Koordinat - Coordinate			Derinlik - Depth		Magnitüd - Magnitude									
	Gün	Ay	Yıl	Saat	Dak.	San.	Enlem-K	Boylam-D	Ref	Km.	Ref	Ms	Ref	Mb	Ref	Md	Ref	MI	Ref	Mw	Ref
421	12	8	2010	8	5	16.5	37.21	28.90	R	6	R					2.5	R				
422	12	8	2010	8	13	3.4	37.26	28.15	R	7	R					2.6	R				
423	12	8	2010	8	32	1.0	37.80	37.91	R	8	R					2.6	R				
424	12	8	2010	9	1	14.9	40.11	41.85	R	5	R					2.8	R				
425	12	8	2010	9	5	7.1	39.68	28.03	R	8	R					2.6	R				
426	12	8	2010	9	14	34.0	38.98	29.82	R	6	R					2.6	R				
427	12	8	2010	9	26	42.7	37.54	35.41	R	9	R					2.6	R				
428	12	8	2010	11	16	50.8	39.86	40.63	R	6	R					2.5	R				
429	12	8	2010	11	35	5.5	37.67	34.78	R	24	R					2.6	R				
430	12	8	2010	11	35	41.9	37.83	26.96	R	15	R					2.9	R				
431	12	8	2010	13	0	0.2	39.70	42.94	R	5	R					2.3	R				
432	12	8	2010	13	22	18.3	40.52	30.30	R	9	R					2.5	R				
433	12	8	2010	13	46	51.4	37.90	26.86	R	5	R					3.2	R				
434	12	8	2010	14	51	53.0	40.28	29.14	R	4	R					2.2	R				
435	12	8	2010	15	40	9.0	40.46	36.84	R	5	R					3.3	R				
436	12	8	2010	15	50	48.8	38.00	26.92	R	24	R					2.4	R				
437	12	8	2010	15	54	30.2	39.64	28.98	R	8	R					2.7	R				
438	12	8	2010	16	15	24.9	37.29	28.20	R	5	R					2.7	R				
439	12	8	2010	17	9	34.0	39.91	29.20	R	5	R					2.6	R				
440	12	8	2010	19	54	38.7	37.91	26.90	R	6	R					2.6	R				

TÜRKİYE DEPREM ETKİNLİĞİ (2010 YILI AĞUSTOS AYI)

No	Tarih - Date			Zaman - Time			Koordinat - Coordinate			Derinlik - Depth		Magnitüd - Magnitude									
	Gün	Ay	Yıl	Saat	Dak.	San.	Enlem-K	Boylam-D	Ref	Km.	Ref	Ms	Ref	Mb	Ref	Md	Ref	MI	Ref	Mw	Ref
441	12	8	2010	23	46	58.4	38.56	39.83	R	5	R					2.9	R				
442	13	8	2010	0	34	51.8	36.37	45.27	R	6	R							3.7	R		
443	13	8	2010	2	0	43.2	40.01	40.01	R	11	R					2.3	R				
444	13	8	2010	5	45	38.4	37.05	28.23	R	12	R					2.4	R				
445	13	8	2010	7	5	58.4	37.86	26.84	R	18	R					2.7	R				
446	13	8	2010	7	13	36.7	36.81	35.62	R	28	R					2.3	R				
447	13	8	2010	7	30	45.6	37.63	36.24	R	6	R					2.8	R				
448	13	8	2010	7	34	49.1	35.17	28.49	R	73	R					3.3	R	3.0	R		
449	13	8	2010	7	41	1.9	35.46	28.67	R	32	R					3.0	R				
450	13	8	2010	9	16	0.8	39.51	34.79	R	2	R					2.8	R				
451	13	8	2010	9	33	48.0	37.28	28.12	R	8	R					2.8	R				
452	13	8	2010	9	38	42.8	40.98	31.35	R	3	R					2.9	R				
453	13	8	2010	9	48	56.5	37.19	28.15	R	2	R					2.4	R				
454	13	8	2010	10	24	47.6	38.86	40.13	R	7	R							3.4	R		
455	13	8	2010	12	0	14.8	35.50	27.29	R	9	R							3.3	R		
456	13	8	2010	13	17	47.8	40.78	42.44	R	5	R					2.8	R				
457	13	8	2010	13	23	20.5	39.06	31.11	R	3	R					2.7	R				
458	13	8	2010	14	33	31.4	36.57	36.35	R	16	R					2.3	R				
459	13	8	2010	14	35	28.9	36.87	34.78	R	28	R					2.0	R				
460	13	8	2010	14	40	53.6	38.93	40.05	R	5	R					2.2	R				

TÜRKİYE DEPREM ETKİNLİĞİ (2010 YILI AĞUSTOS AYI)

No	Tarih - Date			Zaman - Time			Koordinat - Coordinate			Derinlik - Depth		Magnitüd - Magnitude									
	Gün	Ay	Yıl	Saat	Dak.	San.	Enlem-K	Boylam-D	Ref	Km.	Ref	Ms	Ref	Mb	Ref	Md	Ref	MI	Ref	Mw	Ref
461	13	8	2010	14	53	44.1	37.25	28.19	R	2	R					2.5	R				
462	13	8	2010	14	59	22.3	39.31	27.81	R	9	R					2.8	R				
463	13	8	2010	15	9	29.8	38.48	26.91	R	5	R					2.9	R				
464	13	8	2010	15	45	57.6	39.31	32.15	R	5	R					2.8	R				
465	13	8	2010	16	8	13.4	37.39	37.37	R	6	R					2.9	R				
466	13	8	2010	22	15	36.8	40.40	26.05	R	16	R					2.3	R				
467	13	8	2010	22	48	56.6	35.59	27.39	R	10	R					3.3	R				
468	13	8	2010	23	10	18.0	38.16	28.70	R	5	R					2.6	R				
469	13	8	2010	23	34	54.7	40.88	28.71	R	6	R					2.6	R				
470	14	8	2010	0	11	37.4	39.86	30.06	R	5	R					2.8	R				
471	14	8	2010	0	36	43.4	40.82	27.69	R	7	R					2.9	R				
472	14	8	2010	1	18	11.8	40.87	28.71	R	5	R					2.8	R				
473	14	8	2010	1	55	50.5	40.18	31.93	R	23	R					2.6	R				
474	14	8	2010	2	10	51.8	39.03	32.28	R	6	R					2.8	R				
475	14	8	2010	2	17	42.5	38.81	27.84	R	2	R					2.6	R				
476	14	8	2010	2	20	57.1	41.65	32.51	R	2	R					3.2	R				
477	14	8	2010	2	27	18.8	37.45	26.50	R	6	R					2.6	R				
478	14	8	2010	6	20	15.3	37.55	38.79	R	4	R					2.5	R				
479	14	8	2010	7	43	19.7	39.21	28.23	R	3	R					2.7	R				
480	14	8	2010	8	33	39.6	38.60	40.25	R	5	R					2.7	R				

TÜRKİYE DEPREM ETKİNLİĞİ (2010 YILI AĞUSTOS AYI)

No	Tarih - Date			Zaman - Time			Koordinat - Coordinate			Derinlik - Depth		Magnitüd - Magnitude									
	Gün	Ay	Yıl	Saat	Dak.	San.	Enlem-K	Boylam-D	Ref	Km.	Ref	Ms	Ref	Mb	Ref	Md	Ref	MI	Ref	Mw	Ref
481	14	8	2010	9	7	35.3	39.27	27.74	R	9	R					2.8	R				
482	14	8	2010	9	50	59.8	39.69	35.32	R	6	R					2.7	R				
483	14	8	2010	10	30	52.6	38.13	41.12	R	5	R					2.2	R				
484	14	8	2010	11	33	23.6	38.42	29.06	R	12	R					2.7	R				
485	14	8	2010	11	56	12.4	39.53	35.59	R	5	R					2.8	R				
486	14	8	2010	13	56	26.4	37.27	28.22	R	2	R					2.6	R				
487	14	8	2010	14	11	23.4	37.26	28.21	R	12	R					2.7	R				
488	14	8	2010	14	44	31.3	39.36	40.38	R	5	R					2.3	R				
489	14	8	2010	14	54	59.2	39.25	27.58	R	10	R					2.6	R				
490	14	8	2010	15	28	33.6	40.39	27.85	R	3	R					2.5	R				
491	14	8	2010	15	46	56.5	40.08	36.44	R	5	R					2.7	R				
492	14	8	2010	15	49	21.2	38.58	28.67	R	10	R					2.5	R				
493	14	8	2010	16	45	8.2	38.81	29.14	R	8	R					2.7	R				
494	14	8	2010	19	21	38.5	38.78	40.07	R	14	R					2.6	R				
495	14	8	2010	19	32	59.4	35.42	25.19	R	22	R					3.3	R				
496	14	8	2010	19	45	55.8	34.77	31.43	R	28	R							3.0	R		
497	14	8	2010	19	52	20.6	37.04	28.39	R	18	R					2.6	R				
498	14	8	2010	19	58	48.8	39.03	31.68	R	4	R					2.9	R				
499	14	8	2010	20	59	10.7	38.46	38.92	R	8	R					2.3	R				
500	14	8	2010	21	25	46.9	39.20	27.62	R	8	R					2.9	R				

TÜRKİYE DEPREM ETKİNLİĞİ (2010 YILI AĞUSTOS AYI)

No	Tarih - Date			Zaman - Time			Koordinat - Coordinate			Derinlik - Depth		Magnitüd - Magnitude									
	Gün	Ay	Yıl	Saat	Dak.	San.	Enlem-K	Boylam-D	Ref	Km.	Ref	Ms	Ref	Mb	Ref	Md	Ref	MI	Ref	Mw	Ref
501	14	8	2010	21	52	58.7	37.89	26.84	R	5	R					3.1	R				
502	14	8	2010	22	44	47.5	36.97	27.85	R	3	R					2.4	R				
503	14	8	2010	23	0	36.3	37.82	27.23	R	8	R					2.7	R				
504	14	8	2010	23	18	4.0	38.85	27.94	R	5	R					2.5	R				
505	14	8	2010	23	30	55.8	38.84	27.92	R	8	R					2.5	R				
506	14	8	2010	23	54	23.6	40.73	29.16	R	12	R					2.8	R				
507	15	8	2010	3	35	10.5	40.35	30.07	R	12	R					2.5	R				
508	15	8	2010	5	51	24.7	37.40	35.85	R	3	R							3.0	R		
509	15	8	2010	5	51	35.4	38.79	25.68	R	15	R							2.9	R		
510	15	8	2010	6	58	39.6	40.46	29.24	R	12	R					2.0	R				
511	15	8	2010	7	6	43.2	37.23	28.21	R	2	R					2.6	R				
512	15	8	2010	7	7	47.0	35.90	28.59	R	5	R					3.0	R				
513	15	8	2010	7	31	59.4	37.91	27.60	R	5	R					2.3	R				
514	15	8	2010	7	32	31.0	37.84	27.65	R	10	R					2.6	R				
515	15	8	2010	8	17	36.1	37.23	28.20	R	8	R					2.9	R				
516	15	8	2010	8	49	9.7	37.48	35.99	R	2	R					1.8	R				
517	15	8	2010	8	51	37.0	37.26	28.28	R	10	R					2.6	R				
518	15	8	2010	9	0	42.7	39.26	27.69	R	9	R					2.8	R				
519	15	8	2010	9	9	19.5	37.19	28.18	R	7	R					2.7	R				
520	15	8	2010	9	10	0.6	37.96	35.61	R	6	R					2.6	R				

TÜRKİYE DEPREM ETKİNLİĞİ (2010 YILI AĞUSTOS AYI)

No	Tarih - Date			Zaman - Time			Koordinat - Coordinate			Derinlik - Depth		Magnitüd - Magnitude									
	Gün	Ay	Yıl	Saat	Dak.	San.	Enlem-K	Boylam-D	Ref	Km.	Ref	Ms	Ref	Mb	Ref	Md	Ref	MI	Ref	Mw	Ref
521	15	8	2010	9	28	48.1	39.90	29.18	R	6	R					2.6	R				
522	15	8	2010	9	46	44.6	35.79	28.66	R	4	R					2.8	R	2.4	R		
523	15	8	2010	10	15	46.2	39.92	29.20	R	12	R					2.6	R				
524	15	8	2010	10	40	35.0	37.84	26.83	R	5	R					3.0	R				
525	15	8	2010	10	51	22.0	40.63	37.82	R	5	R					3.0	R				
526	15	8	2010	12	11	7.3	40.81	27.50	R	10	R							3.1	R		
527	15	8	2010	13	57	44.4	40.34	29.71	R	20	R					2.0	R				
528	15	8	2010	14	18	52.7	37.27	28.23	R	2	R					2.5	R				
529	15	8	2010	14	54	2.8	39.62	29.11	R	7	R					2.4	R				
530	15	8	2010	15	29	26.5	39.64	29.03	R	7	R					2.5	R				
531	15	8	2010	16	6	36.9	39.09	34.28	R	13	R					2.7	R				
532	15	8	2010	16	20	42.0	39.58	28.26	R	6	R					2.6	R				
533	15	8	2010	19	30	41.9	39.32	40.84	R	5	R					2.6	R				
534	15	8	2010	19	37	37.9	34.72	33.46	R	10	R					2.8	R				
535	15	8	2010	19	51	16.7	40.46	26.36	R	13	R					1.8	R				
536	15	8	2010	20	10	21.7	38.01	43.05	R	8	R					3.0	R				
537	15	8	2010	20	37	44.6	37.88	28.99	R	3	R					3.0	R				
538	15	8	2010	20	47	47.7	38.97	28.08	R	9	R					2.7	R				
539	15	8	2010	21	51	11.7	36.10	29.35	R	14	R					3.1	R				
540	15	8	2010	22	17	54.4	35.05	37.25	R	10	R							2.9	R		

TÜRKİYE DEPREM ETKİNLİĞİ (2010 YILI AĞUSTOS AYI)

No	Tarih - Date			Zaman - Time			Koordinat - Coordinate			Derinlik - Depth		Magnitüd - Magnitude									
	Gün	Ay	Yıl	Saat	Dak.	San.	Enlem-K	Boylam-D	Ref	Km.	Ref	Ms	Ref	Mb	Ref	Md	Ref	MI	Ref	Mw	Ref
541	15	8	2010	23	47	33.2	37.89	43.01	R	10	R					3.0	R				
542	16	8	2010	0	59	27.9	36.40	31.56	R	24	R					3.0	R				
543	16	8	2010	3	9	1.4	40.84	31.58	R	5	R							3.9	R		
544	16	8	2010	4	36	30.2	38.96	28.07	R	11	R					2.6	R				
545	16	8	2010	4	52	30.6	37.86	29.04	R	5	R					2.6	R				
546	16	8	2010	6	20	56.7	40.49	32.89	R	5	R					2.4	R				
547	16	8	2010	6	22	54.3	36.14	35.93	R	10	R					3.2	R				
548	16	8	2010	6	41	21.8	39.76	39.00	R	8	R							3.7	R		
549	16	8	2010	7	23	14.4	36.68	36.07	R	7	R					2.6	R				
550	16	8	2010	8	10	17.2	37.19	33.01	R	5	R					2.2	R				
551	16	8	2010	8	33	25.4	40.29	28.26	R	5	R					2.5	R				
552	16	8	2010	8	34	55.9	37.06	27.62	R	10	R					2.4	R				
553	16	8	2010	8	35	51.8	37.21	28.14	R	3	R					2.4	R				
554	16	8	2010	9	1	22.2	37.20	27.87	R	5	R					2.4	R				
555	16	8	2010	9	3	3.2	37.12	27.88	R	19	R					2.3	R				
556	16	8	2010	9	17	17.3	37.07	27.92	R	25	R					2.2	R				
557	16	8	2010	10	59	46.4	40.97	35.96	R	3	R					2.5	R				
558	16	8	2010	11	33	26.3	38.46	39.36	R	5	R					2.2	R				
559	16	8	2010	11	40	6.8	41.48	27.81	R	3	R					2.3	R				
560	16	8	2010	11	48	27.0	36.54	28.25	R	29	R					2.7	R				

TÜRKİYE DEPREM ETKİNLİĞİ (2010 YILI AĞUSTOS AYI)

No	Tarih - Date			Zaman - Time			Koordinat - Coordinate			Derinlik - Depth		Magnitüd - Magnitude									
	Gün	Ay	Yıl	Saat	Dak.	San.	Enlem-K	Boylam-D	Ref	Km.	Ref	Ms	Ref	Mb	Ref	Md	Ref	MI	Ref	Mw	Ref
561	16	8	2010	11	55	55.0	40.84	31.64	R	5	R					2.7	R				
562	16	8	2010	12	7	28.9	41.81	27.33	R	2	R					2.3	R				
563	16	8	2010	12	20	3.8	35.32	33.19	R	7	R					2.5	R				
564	16	8	2010	12	25	17.1	38.57	38.95	R	23	R					2.2	R				
565	16	8	2010	13	52	8.4	38.27	39.67	R	22	R					2.5	R				
566	16	8	2010	13	52	53.4	35.25	33.82	R	6	R					3.0	R				
567	16	8	2010	13	54	33.9	39.49	31.05	R	5	R					2.7	R				
568	16	8	2010	14	22	26.0	40.53	29.22	R	3	R					2.5	R				
569	16	8	2010	14	32	22.7	41.48	35.98	R	2	R					2.7	R				
570	16	8	2010	14	59	1.6	39.28	27.78	R	4	R					2.9	R				
571	16	8	2010	15	2	32.1	37.28	28.23	R	5	R					2.6	R				
572	16	8	2010	16	12	10.4	37.08	27.64	R	9	R					2.8	R				
573	16	8	2010	16	17	57.8	37.21	28.17	R	5	R					2.6	R				
574	16	8	2010	17	17	57.6	39.28	28.23	R	9	R					2.7	R				
575	16	8	2010	19	41	34.1	37.25	27.66	R	6	R					2.6	R				
576	16	8	2010	20	48	5.2	38.99	31.58	R	6	R					2.4	R				
577	16	8	2010	21	15	30.6	37.63	42.78	R	11	R					2.8	R				
578	16	8	2010	21	19	37.5	37.69	42.73	R	5	R					2.6	R				
579	16	8	2010	21	54	30.2	39.02	29.79	R	3	R					2.8	R				
580	16	8	2010	22	19	9.9	40.17	31.80	R	10	R					2.7	R				

TÜRKİYE DEPREM ETKİNLİĞİ (2010 YILI AĞUSTOS AYI)

No	Tarih - Date			Zaman - Time			Koordinat - Coordinate			Derinlik - Depth		Magnitüd - Magnitude									
	Gün	Ay	Yıl	Saat	Dak.	San.	Enlem-K	Boylam-D	Ref	Km.	Ref	Ms	Ref	Mb	Ref	Md	Ref	MI	Ref	Mw	Ref
581	16	8	2010	23	7	12.6	36.98	34.34	R	6	R					2.7	R				
582	16	8	2010	23	39	4.2	40.90	33.46	R	5	R					3.0	R				
583	16	8	2010	23	58	27.1	37.57	38.43	R	5	R					3.0	R				
584	17	8	2010	0	27	14.5	40.86	31.64	R	5	R					3.1	R				
585	17	8	2010	3	21	55.3	36.98	29.07	R	9	R					2.8	R				
586	17	8	2010	5	29	21.5	37.91	29.04	R	7	R					2.7	R				
587	17	8	2010	8	16	10.8	38.53	33.95	R	5	R					2.5	R				
588	17	8	2010	8	30	55.7	40.56	34.44	R	5	R					3.0	R				
589	17	8	2010	8	31	47.6	36.42	36.30	R	18	R					2.7	R	2.9	R		
590	17	8	2010	9	57	3.8	37.66	34.80	R	5	R					2.7	R				
591	17	8	2010	10	11	30.7	40.50	40.26	R	4	R					2.0	R				
592	17	8	2010	11	37	12.9	38.01	34.89	R	6	R					2.7	R				
593	17	8	2010	11	38	9.1	38.75	39.45	R	27	R					2.2	R				
594	17	8	2010	11	45	51.8	38.46	33.96	R	8	R					2.4	R				
595	17	8	2010	12	28	45.0	37.04	35.73	R	5	R					2.1	R				
596	17	8	2010	13	12	11.1	40.55	26.96	R	8	R					2.8	R				
597	17	8	2010	14	1	45.9	38.30	34.89	R	5	R					2.9	R				
598	17	8	2010	14	22	36.6	37.24	28.21	R	5	R					2.7	R				
599	17	8	2010	15	29	33.1	37.24	28.18	R	5	R					2.6	R				
600	17	8	2010	17	22	2.2	40.61	42.96	R	5	R					2.7	R				

TÜRKİYE DEPREM ETKİNLİĞİ (2010 YILI AĞUSTOS AYI)

No	Tarih - Date			Zaman - Time			Koordinat - Coordinate			Derinlik - Depth		Magnitüd - Magnitude									
	Gün	Ay	Yıl	Saat	Dak.	San.	Enlem-K	Boylam-D	Ref	Km.	Ref	Ms	Ref	Mb	Ref	Md	Ref	MI	Ref	Mw	Ref
601	17	8	2010	18	14	11.2	39.13	29.14	R	8	R					2.6	R				
602	17	8	2010	18	15	38.6	39.14	29.05	R	5	R					2.7	R				
603	17	8	2010	19	3	57.6	41.63	43.80	R	5	R					2.8	R				
604	17	8	2010	20	58	29.4	39.14	29.11	R	5	R					2.6	R				
605	17	8	2010	21	9	14.2	39.31	40.32	R	4	R					2.9	R				
606	17	8	2010	21	25	49.5	39.55	34.43	R	10	R					2.7	R				
607	17	8	2010	23	51	55.5	37.15	28.46	R	6	R					3.5	R	3.5	R		
608	18	8	2010	0	20	4.3	39.24	27.74	R	12	R					2.8	R				
609	18	8	2010	1	12	41.4	38.35	31.27	R	22	R					2.8	R				
610	18	8	2010	1	27	25.6	38.71	26.48	R	7	R					3.1	R				
611	18	8	2010	5	36	41.6	40.67	29.08	R	8	R					2.4	R				
612	18	8	2010	6	57	2.2	37.88	27.27	R	8	R					2.9	R				
613	18	8	2010	7	50	35.3	37.34	28.25	R	5	R					2.9	R				
614	18	8	2010	8	41	43.8	37.22	28.18	R	12	R					2.9	R				
615	18	8	2010	8	52	1.3	40.34	29.49	R	10	R					2.4	R				
616	18	8	2010	9	20	58.6	39.64	29.33	R	4	R					2.3	R				
617	18	8	2010	9	46	32.8	37.23	28.15	R	5	R					2.7	R				
618	18	8	2010	9	55	39.4	39.30	27.68	R	8	R					2.7	R				
619	18	8	2010	10	1	1.0	40.62	35.10	R	10	R					2.8	R				
620	18	8	2010	10	26	39.0	41.14	36.10	R	2	R					2.5	R				

TÜRKİYE DEPREM ETKİNLİĞİ (2010 YILI AĞUSTOS AYI)

No	Tarih - Date			Zaman - Time			Koordinat - Coordinate			Derinlik - Depth		Magnitüd - Magnitude									
	Gün	Ay	Yıl	Saat	Dak.	San.	Enlem-K	Boylam-D	Ref	Km.	Ref	Ms	Ref	Mb	Ref	Md	Ref	MI	Ref	Mw	Ref
621	18	8	2010	11	9	40.6	40.54	27.56	R	4	R					2.5	R				
622	18	8	2010	11	38	59.5	41.56	27.88	R	11	R					2.4	R				
623	18	8	2010	12	7	25.5	41.05	27.91	R	13	R					2.5	R				
624	18	8	2010	12	43	19.6	40.33	29.12	R	10	R					2.7	R				
625	18	8	2010	13	5	7.8	38.07	38.01	R	10	R					2.4	R				
626	18	8	2010	13	16	11.0	39.69	29.19	R	11	R					2.4	R				
627	18	8	2010	13	22	55.4	37.25	28.14	R	14	R					2.7	R				
628	18	8	2010	14	5	59.6	38.73	27.92	R	5	R					3.6	R				
629	18	8	2010	15	10	22.1	36.94	35.99	R	30	R					2.5	R				
630	18	8	2010	15	17	9.3	37.17	28.14	R	5	R					2.6	R				
631	18	8	2010	16	5	2.0	39.87	29.20	R	5	R					2.6	R				
632	18	8	2010	16	19	4.5	39.99	29.18	R	3	R					2.6	R				
633	18	8	2010	17	23	23.2	36.13	28.82	R	6	R					2.8	R				
634	18	8	2010	19	38	15.2	35.45	27.89	R	5	R					3.2	R				
635	18	8	2010	20	30	22.2	38.62	45.23	R	2	R					3.1	R				
636	18	8	2010	22	3	9.3	37.89	26.86	R	7	R					2.7	R				
637	18	8	2010	22	26	7.0	37.48	35.54	R	6	R					2.7	R				
638	18	8	2010	22	52	48.2	36.83	27.56	R	12	R					2.6	R				
639	18	8	2010	23	40	38.2	37.23	43.22	R	5	R					3.4	R				
640	19	8	2010	3	21	13.4	39.96	40.86	R	3	R					3.1	R				

TÜRKİYE DEPREM ETKİNLİĞİ (2010 YILI AĞUSTOS AYI)

No	Tarih - Date			Zaman - Time			Koordinat - Coordinate			Derinlik - Depth		Magnitüd - Magnitude									
	Gün	Ay	Yıl	Saat	Dak.	San.	Enlem-K	Boylam-D	Ref	Km.	Ref	Ms	Ref	Mb	Ref	Md	Ref	MI	Ref	Mw	Ref
641	19	8	2010	4	16	44.4	36.41	29.31	R	5	R					2.7	R				
642	19	8	2010	4	38	5.7	37.49	35.88	R	10	R					2.7	R				
643	19	8	2010	5	29	33.4	40.01	39.98	R	9	R					2.4	R				
644	19	8	2010	6	27	53.3	38.64	31.65	R	13	R					2.6	R				
645	19	8	2010	7	31	14.7	37.50	35.56	R	5	R					2.6	R				
646	19	8	2010	8	4	20.1	40.46	29.25	R	5	R					2.5	R				
647	19	8	2010	8	35	52.9	41.02	26.64	R	24	R					2.2	R				
648	19	8	2010	9	52	54.4	37.38	27.91	R	30	R					2.3	R				
649	19	8	2010	10	12	11.8	37.21	28.13	R	5	R					2.2	R				
650	19	8	2010	11	16	29.8	39.34	40.97	R	48	R					2.9	R				
651	19	8	2010	12	17	54.3	40.50	35.08	R	5	R					2.6	R				
652	19	8	2010	12	40	13.3	37.05	28.48	R	29	R					2.3	R				
653	19	8	2010	13	8	34.9	40.19	30.40	R	26	R					2.5	R				
654	19	8	2010	14	3	6.2	39.01	32.76	R	10	R					2.9	R				
655	19	8	2010	14	10	17.5	41.55	35.39	R	8	R					2.6	R				
656	19	8	2010	14	48	54.6	40.03	33.56	R	11	R					2.7	R				
657	19	8	2010	15	3	53.7	37.10	37.14	R	14	R					2.7	R				
658	19	8	2010	15	28	56.4	37.29	37.64	R	5	R					2.7	R				
659	19	8	2010	16	6	9.1	37.21	28.18	R	3	R					2.6	R				
660	19	8	2010	19	57	53.0	39.67	27.70	R	16	R					2.1	R				

TÜRKİYE DEPREM ETKİNLİĞİ (2010 YILI AĞUSTOS AYI)

No	Tarih - Date			Zaman - Time			Koordinat - Coordinate			Derinlik - Depth		Magnitüd - Magnitude									
	Gün	Ay	Yıl	Saat	Dak.	San.	Enlem-K	Boylam-D	Ref	Km.	Ref	Ms	Ref	Mb	Ref	Md	Ref	MI	Ref	Mw	Ref
661	19	8	2010	21	18	16.8	36.64	26.93	R	113	R					3.0	R				
662	19	8	2010	21	38	54.9	38.93	26.07	R	12	R					2.6	R				
663	19	8	2010	22	45	32.5	38.94	30.02	R	2	R					2.9	R				
664	20	8	2010	0	59	0.4	38.93	25.93	R	6	R					3.2	R				
665	20	8	2010	2	27	30.4	38.82	27.74	R	5	R					2.6	R				
666	20	8	2010	3	55	8.3	40.03	40.96	R	17	R					2.7	R				
667	20	8	2010	4	47	30.8	38.86	27.87	R	10	R					2.8	R				
668	20	8	2010	5	48	40.8	37.26	28.20	R	5	R					2.5	R				
669	20	8	2010	6	42	34.9	37.26	28.29	R	5	R							2.3	R		
670	20	8	2010	6	45	30.8	37.25	31.18	R	32	R							3.7	R		
671	20	8	2010	7	27	40.6	37.09	38.95	R	5	R					2.6	R				
672	20	8	2010	8	43	16.0	37.25	28.19	R	5	R					2.7	R				
673	20	8	2010	9	35	13.7	41.98	27.43	R	10	R							2.0	R		
674	20	8	2010	9	52	35.8	40.00	29.03	R	5	R					2.6	R				
675	20	8	2010	11	47	14.4	39.93	27.37	R	21	R							2.2	R		
676	20	8	2010	14	56	1.4	39.81	33.28	R	5	R					2.5	R				
677	20	8	2010	15	23	55.9	38.32	38.10	R	7	R					2.3	R				
678	20	8	2010	16	8	39.2	37.99	37.93	R	6	R					2.6	R				
679	20	8	2010	16	12	57.2	39.90	29.18	R	7	R					2.6	R				
680	20	8	2010	16	18	19.8	37.97	35.69	R	6	R					2.5	R				

TÜRKİYE DEPREM ETKİNLİĞİ (2010 YILI AĞUSTOS AYI)

No	Tarih - Date			Zaman - Time			Koordinat - Coordinate			Derinlik - Depth		Magnitüd - Magnitude									
	Gün	Ay	Yıl	Saat	Dak.	San.	Enlem-K	Boylam-D	Ref	Km.	Ref	Ms	Ref	Mb	Ref	Md	Ref	MI	Ref	Mw	Ref
681	20	8	2010	16	26	56.3	37.18	38.90	R	6	R					3.3	R				
682	20	8	2010	17	4	43.4	40.85	34.02	R	7	R					2.8	R				
683	20	8	2010	18	18	29.2	38.56	39.14	R	18	R					2.3	R				
684	20	8	2010	19	21	14.0	39.90	40.77	R	5	R					2.6	R				
685	20	8	2010	19	39	56.0	38.70	40.12	R	12	R					2.9	R				
686	20	8	2010	20	22	38.6	39.93	39.24	R	6	R					2.7	R				
687	20	8	2010	21	13	9.7	42.06	26.43	R	5	R					3.1	R				
688	20	8	2010	21	23	10.7	39.82	40.71	R	11	R					2.7	R				
689	20	8	2010	21	47	12.8	38.31	40.17	R	9	R					2.8	R				
690	20	8	2010	22	22	42.6	37.90	29.26	R	5	R					3.0	R				
691	20	8	2010	22	27	3.2	39.96	39.22	R	5	R					2.7	R				
692	20	8	2010	23	6	47.8	37.87	29.34	R	10	R					2.7	R				
693	21	8	2010	1	1	48.6	38.87	27.84	R	3	R					2.7	R				
694	21	8	2010	2	35	0.1	42.35	26.15	N	7	N							4.0	R		
695	21	8	2010	5	56	7.1	37.14	28.20	R	4	R					2.7	R				
696	21	8	2010	6	3	14.9	41.83	26.51	R	2	R					3.0	R				
697	21	8	2010	6	40	6.6	37.26	28.21	R	10	R					2.6	R				
698	21	8	2010	6	40	14.6	39.79	42.59	R	18	R					2.9	R				
699	21	8	2010	8	23	29.7	37.23	28.16	R	5	R					2.6	R				
700	21	8	2010	8	53	2.0	40.97	35.46	R	22	R							2.7	R		

TÜRKİYE DEPREM ETKİNLİĞİ (2010 YILI AĞUSTOS AYI)

No	Tarih - Date			Zaman - Time			Koordinat - Coordinate			Derinlik - Depth		Magnitüd - Magnitude									
	Gün	Ay	Yıl	Saat	Dak.	San.	Enlem-K	Boylam-D	Ref	Km.	Ref	Ms	Ref	Mb	Ref	Md	Ref	MI	Ref	Mw	Ref
701	21	8	2010	8	55	8.6	37.25	28.18	R	5	R					2.6	R				
702	21	8	2010	9	26	39.3	37.26	28.19	R	7	R					2.8	R				
703	21	8	2010	9	31	28.3	39.38	26.97	R	3	R					2.6	R				
704	21	8	2010	9	37	37.0	41.79	26.62	R	10	R					2.7	R				
705	21	8	2010	10	43	16.4	41.96	26.55	R	18	R					2.9	R				
706	21	8	2010	11	25	59.6	39.60	30.60	R	9	R					2.6	R				
707	21	8	2010	11	47	29.6	39.18	37.60	R	5	R					2.7	R				
708	21	8	2010	12	2	35.8	37.42	37.10	R	3	R					2.6	R				
709	21	8	2010	13	10	10.9	38.51	39.32	R	2	R					2.7	R				
710	21	8	2010	13	14	23.6	42.07	26.29	R	5	R					3.0	R				
711	21	8	2010	13	49	6.6	37.18	28.23	R	12	R					2.9	R				
712	21	8	2010	14	22	7.1	37.98	35.66	R	3	R					2.8	R				
713	21	8	2010	15	1	55.0	39.91	29.92	R	12	R					2.5	R				
714	21	8	2010	15	26	59.9	37.24	28.19	R	9	R					2.4	R				
715	21	8	2010	15	35	18.5	37.05	31.13	R	23	R					2.9	R				
716	21	8	2010	16	12	14.7	37.94	43.15	R	5	R					3.0	R				
717	21	8	2010	16	28	4.6	37.68	38.41	R	5	R					3.2	R				
718	21	8	2010	17	10	26.7	38.97	27.97	R	6	R					2.5	R				
719	21	8	2010	20	44	21.7	39.34	39.53	R	8	R							2.2	R		
720	21	8	2010	21	22	39.2	41.67	43.83	R	4	R					2.7	R				

TÜRKİYE DEPREM ETKİNLİĞİ (2010 YILI AĞUSTOS AYI)

No	Tarih - Date			Zaman - Time			Koordinat - Coordinate			Derinlik - Depth		Magnitüd - Magnitude									
	Gün	Ay	Yıl	Saat	Dak.	San.	Enlem-K	Boylam-D	Ref	Km.	Ref	Ms	Ref	Mb	Ref	Md	Ref	MI	Ref	Mw	Ref
721	21	8	2010	22	32	4.8	38.52	25.65	R	7	R					2.8	R				
722	21	8	2010	23	55	21.2	39.23	33.21	R	7	R					2.5	R				
723	22	8	2010	0	49	41.2	36.63	28.01	R	9	R					2.8	R				
724	22	8	2010	1	0	42.8	39.65	28.60	R	4	R					2.8	R				
725	22	8	2010	1	30	18.9	36.06	30.86	R	14	R					3.6	R				
726	22	8	2010	1	59	9.7	39.44	35.33	R	9	R					2.7	R				
727	22	8	2010	2	30	2.1	39.46	35.36	R	11	R					2.6	R				
728	22	8	2010	4	35	36.7	37.19	36.31	R	11	R					2.4	R				
729	22	8	2010	4	53	53.7	38.71	32.46	R	5	R					2.8	R				
730	22	8	2010	5	9	11.0	38.60	26.42	R	9	R					2.2	R				
731	22	8	2010	5	11	54.2	40.29	38.08	R	23	R							2.7	R		
732	22	8	2010	7	5	25.9	37.19	28.23	R	12	R							2.3	R		
733	22	8	2010	7	17	12.8	38.81	27.84	R	5	R					2.6	R				
734	22	8	2010	7	30	56.4	37.26	28.21	R	3	R					2.6	R	2.7	R		
735	22	8	2010	7	39	33.6	38.80	27.83	R	4	R					2.6	R				
736	22	8	2010	9	44	52.2	37.22	28.13	R	2	R					2.8	R	2.3	R		
737	22	8	2010	10	7	55.6	38.47	34.14	R	16	R					2.4	R				
738	22	8	2010	10	54	15.7	38.27	38.89	R	5	R					2.4	R				
739	22	8	2010	11	20	4.9	36.30	28.67	R	14	R					3.1	R				
740	22	8	2010	13	38	23.7	40.16	29.97	R	7	R					2.4	R				

TÜRKİYE DEPREM ETKİNLİĞİ (2010 YILI AĞUSTOS AYI)

No	Tarih - Date			Zaman - Time			Koordinat - Coordinate			Derinlik - Depth		Magnitüd - Magnitude									
	Gün	Ay	Yıl	Saat	Dak.	San.	Enlem-K	Boylam-D	Ref	Km.	Ref	Ms	Ref	Mb	Ref	Md	Ref	MI	Ref	Mw	Ref
741	22	8	2010	13	47	27.7	36.81	26.15	R	8	R							2.7	R		
742	22	8	2010	14	32	10.9	38.90	27.58	R	15	R					2.5	R				
743	22	8	2010	15	28	46.5	37.93	29.07	R	3	R					3.1	R				
744	22	8	2010	16	7	30.2	37.21	28.27	R	14	R					2.6	R				
745	22	8	2010	17	32	27.2	36.22	27.80	R	28	R					3.0	R				
746	22	8	2010	18	49	10.3	37.93	29.07	R	3	R					3.2	R				
747	22	8	2010	18	52	6.0	37.93	29.08	R	3	R					2.9	R				
748	22	8	2010	23	45	26.4	37.25	36.90	R	5	R					2.8	R				
749	23	8	2010	0	14	43.6	37.59	36.14	R	5	R					2.7	R				
750	23	8	2010	1	19	57.8	39.83	28.66	R	10	R					2.5	R				
751	23	8	2010	2	24	7.0	40.36	42.13	R	13	R					2.9	R				
752	23	8	2010	4	22	36.6	40.38	25.98	R	13	R							3.9	R		
753	23	8	2010	5	24	57.0	36.40	35.64	R	45	R					2.6	R				
754	23	8	2010	8	47	45.2	40.40	25.97	R	19	R					2.7	R				
755	23	8	2010	9	54	42.2	37.26	28.20	R	5	R					2.7	R				
756	23	8	2010	12	9	59.7	38.32	28.30	R	5	R					2.8	R				
757	23	8	2010	12	30	3.5	41.50	27.82	R	7	R					2.4	R				
758	23	8	2010	13	8	8.2	38.66	26.73	R	4	R					2.5	R				
759	23	8	2010	13	45	3.4	38.26	38.85	R	5	R					2.7	R				
760	23	8	2010	13	57	37.3	40.44	29.21	R	14	R					2.4	R				

TÜRKİYE DEPREM ETKİNLİĞİ (2010 YILI AĞUSTOS AYI)

No	Tarih - Date			Zaman - Time			Koordinat - Coordinate			Derinlik - Depth		Magnitüd - Magnitude									
	Gün	Ay	Yıl	Saat	Dak.	San.	Enlem-K	Boylam-D	Ref	Km.	Ref	Ms	Ref	Mb	Ref	Md	Ref	MI	Ref	Mw	Ref
761	23	8	2010	14	21	51.6	39.83	33.02	R	10	R					2.7	R				
762	23	8	2010	15	11	56.4	37.58	38.70	R	4	R					3.1	R				
763	23	8	2010	15	35	36.0	38.34	38.97	R	3	R					2.9	R				
764	23	8	2010	15	54	13.3	38.44	29.08	R	10	R					2.8	R				
765	23	8	2010	18	29	38.0	38.89	38.99	R	7	R					2.9	R				
766	23	8	2010	23	13	49.5	38.46	26.38	R	8	R					2.9	R				
767	24	8	2010	0	4	48.9	38.96	25.95	R	16	R					3.0	R				
768	24	8	2010	0	24	36.1	38.88	27.37	R	8	R					2.9	R				
769	24	8	2010	3	36	35.2	40.54	29.13	R	14	R					2.1	R				
770	24	8	2010	4	6	38.6	38.94	25.90	R	9	R					2.8	R				
771	24	8	2010	5	48	44.6	37.28	28.20	R	7	R					2.7	R				
772	24	8	2010	6	38	4.0	40.54	34.68	R	22	R					3.2	R				
773	24	8	2010	8	24	43.5	37.22	28.20	R	11	R					2.7	R				
774	24	8	2010	8	26	48.1	39.30	40.18	R	20	R					2.9	R				
775	24	8	2010	8	52	31.8	39.72	28.02	R	7	R					2.9	R				
776	24	8	2010	9	48	25.2	39.30	27.57	R	15	R					2.7	R				
777	24	8	2010	10	7	43.1	37.93	32.44	R	4	R					2.4	R				
778	24	8	2010	10	19	41.9	40.24	28.97	R	14	R					2.8	R				
779	24	8	2010	10	38	41.7	41.90	27.31	R	7	R					2.4	R				
780	24	8	2010	10	41	29.3	36.94	27.92	R	25	R					2.6	R				

TÜRKİYE DEPREM ETKİNLİĞİ (2010 YILI AĞUSTOS AYI)

No	Tarih - Date			Zaman - Time			Koordinat - Coordinate			Derinlik - Depth		Magnitüd - Magnitude									
	Gün	Ay	Yıl	Saat	Dak.	San.	Enlem-K	Boylam-D	Ref	Km.	Ref	Ms	Ref	Mb	Ref	Md	Ref	MI	Ref	Mw	Ref
781	24	8	2010	11	26	48.4	39.53	29.45	R	11	R					2.8	R				
782	24	8	2010	11	48	48.4	40.30	28.36	R	5	R					2.8	R				
783	24	8	2010	12	59	35.6	38.78	39.97	R	22	R					2.6	R				
784	24	8	2010	14	59	0.6	40.65	27.03	R	11	R					2.7	R				
785	24	8	2010	14	59	35.5	39.35	27.78	R	5	R					2.3	R				
786	24	8	2010	15	39	57.4	38.56	25.73	R	13	R					2.6	R				
787	24	8	2010	15	46	53.9	37.15	28.16	R	7	R					2.6	R				
788	24	8	2010	15	54	24.1	38.67	39.75	R	10	R					2.8	R				
789	24	8	2010	16	9	14.6	40.23	41.06	R	5	R					2.9	R				
790	24	8	2010	16	21	45.8	39.38	36.68	R	6	R					2.9	R				
791	24	8	2010	17	3	19.0	40.62	26.54	R	8	R					2.7	R				
792	24	8	2010	18	22	23.6	36.05	27.32	R	19	R					3.0	R				
793	24	8	2010	20	49	21.1	38.06	43.04	R	6	R					2.9	R				
794	24	8	2010	22	9	58.2	41.11	36.68	R	10	R					2.9	R				
795	24	8	2010	23	43	8.2	35.17	25.35	R	11	R					3.6	R				
796	25	8	2010	1	1	31.1	38.44	25.53	R	6	R					2.8	R				
797	25	8	2010	5	20	14.5	36.72	28.00	R	30	R					2.6	R				
798	25	8	2010	7	18	53.2	36.48	28.37	R	16	R					2.8	R				
799	25	8	2010	9	0	7.4	35.06	27.18	R	75	R					3.6	R				
800	25	8	2010	9	58	17.3	39.83	33.04	R	6	R					2.6	R				

TÜRKİYE DEPREM ETKİNLİĞİ (2010 YILI AĞUSTOS AYI)

No	Tarih - Date			Zaman - Time			Koordinat - Coordinate			Derinlik - Depth		Magnitüd - Magnitude									
	Gün	Ay	Yıl	Saat	Dak.	San.	Enlem-K	Boylam-D	Ref	Km.	Ref	Ms	Ref	Mb	Ref	Md	Ref	MI	Ref	Mw	Ref
801	25	8	2010	10	58	33.5	39.41	28.06	R	2	R					2.7	R				
802	25	8	2010	10	58	46.7	37.07	36.14	R	8	R					2.6	R				
803	25	8	2010	12	1	8.4	39.92	41.37	R	7	R					2.9	R				
804	25	8	2010	13	55	42.8	37.26	28.20	R	7	R					2.5	R				
805	25	8	2010	14	5	48.7	37.44	28.10	R	13	R					2.7	R				
806	25	8	2010	17	16	19.1	36.79	27.46	R	5	R					2.8	R				
807	25	8	2010	17	46	17.6	36.75	26.48	R	18	R					3.0	R				
808	25	8	2010	21	11	56.2	38.77	40.07	R	13	R					2.7	R				
809	25	8	2010	21	34	15.2	39.32	42.08	R	3	R					3.1	R				
810	25	8	2010	21	54	3.3	40.04	41.86	R	5	R					2.8	R				
811	25	8	2010	22	18	40.1	39.03	27.88	R	6	R					3.1	R				
812	25	8	2010	23	53	18.2	40.71	30.10	R	7	R					2.7	R				
813	26	8	2010	1	15	48.1	40.61	41.90	R	13	R					3.0	R				
814	26	8	2010	3	53	44.9	40.12	31.80	R	9	R					2.8	R				
815	26	8	2010	5	24	2.3	40.71	27.55	R	6	R					2.7	R				
816	26	8	2010	7	23	13.6	40.52	40.19	R	5	R					2.0	R				
817	26	8	2010	7	48	41.4	37.28	28.21	R	3	R					2.4	R				
818	26	8	2010	8	20	41.7	40.77	30.99	R	4	R					3.0	R				
819	26	8	2010	8	27	38.2	40.83	27.75	R	12	R					2.4	R				
820	26	8	2010	8	47	22.7	37.17	28.08	R	12	R					2.7	R				

TÜRKİYE DEPREM ETKİNLİĞİ (2010 YILI AĞUSTOS AYI)

No	Tarih - Date			Zaman - Time			Koordinat - Coordinate			Derinlik - Depth		Magnitüd - Magnitude									
	Gün	Ay	Yıl	Saat	Dak.	San.	Enlem-K	Boylam-D	Ref	Km.	Ref	Ms	Ref	Mb	Ref	Md	Ref	MI	Ref	Mw	Ref
821	26	8	2010	8	48	34.4	40.82	31.04	R	11	R					2.6	R				
822	26	8	2010	9	22	8.2	37.26	28.24	R	15	R					2.5	R				
823	26	8	2010	10	18	36.8	37.66	34.76	R	3	R					2.9	R				
824	26	8	2010	12	6	50.9	38.98	34.95	R	5	R					2.8	R				
825	26	8	2010	14	21	29.0	37.55	35.55	R	5	R					2.6	R				
826	26	8	2010	14	23	52.9	39.19	34.38	R	12	R					2.6	R				
827	26	8	2010	16	30	34.3	38.85	26.24	R	11	R					2.8	R				
828	26	8	2010	16	37	53.8	38.89	31.88	R	5	R					2.5	R				
829	26	8	2010	16	44	42.9	39.97	29.17	R	5	R					3.0	R				
830	26	8	2010	17	0	57.7	36.73	28.10	R	5	R					2.7	R				
831	26	8	2010	17	39	0.9	40.17	25.64	R	4	R					3.2	R				
832	26	8	2010	19	1	59.3	38.55	39.53	R	8	R					2.8	R				
833	26	8	2010	19	13	58.1	40.13	31.73	R	5	R					2.6	R				
834	26	8	2010	20	51	23.9	40.63	29.00	R	10	R					2.9	R				
835	26	8	2010	23	0	53.6	40.22	38.21	R	10	R					2.7	R				
836	27	8	2010	6	57	12.2	37.89	26.83	R	5	R					3.1	R				
837	27	8	2010	7	8	35.1	37.24	28.24	R	13	R					2.6	R				
838	27	8	2010	7	24	28.7	40.77	30.02	R	5	R					2.6	R				
839	27	8	2010	9	14	22.0	39.94	29.18	R	7	R					2.7	R				
840	27	8	2010	10	48	4.9	37.18	27.88	R	5	R					2.5	R				

TÜRKİYE DEPREM ETKİNLİĞİ (2010 YILI AĞUSTOS AYI)

No	Tarih - Date			Zaman - Time			Koordinat - Coordinate			Derinlik - Depth		Magnitüd - Magnitude									
	Gün	Ay	Yıl	Saat	Dak.	San.	Enlem-K	Boylam-D	Ref	Km.	Ref	Ms	Ref	Mb	Ref	Md	Ref	MI	Ref	Mw	Ref
841	27	8	2010	10	49	16.1	37.02	27.93	R	4	R					2.6	R				
842	27	8	2010	11	44	0.8	38.05	34.91	R	10	R					2.7	R				
843	27	8	2010	13	28	53.3	41.46	35.11	R	5	R					2.5	R				
844	27	8	2010	14	48	21.9	37.03	35.75	R	5	R					2.1	R				
845	27	8	2010	15	32	5.2	39.42	31.38	R	5	R					2.6	R				
846	27	8	2010	15	33	20.7	37.27	28.26	R	11	R					2.7	R				
847	27	8	2010	17	26	1.0	37.90	29.13	R	5	R					3.1	R				
848	27	8	2010	19	50	9.0	39.92	39.83	R	18	R					2.7	R				
849	27	8	2010	21	21	55.7	38.98	27.95	R	16	R					2.7	R				
850	27	8	2010	21	41	28.6	37.35	36.25	R	16	R					2.5	R				
851	27	8	2010	21	50	27.9	37.77	35.43	R	5	R					3.0	R				
852	27	8	2010	22	42	41.5	37.87	30.97	R	6	R					2.7	R				
853	27	8	2010	22	54	18.6	37.54	35.57	R	5	R					2.7	R				
854	28	8	2010	0	53	8.2	40.59	41.94	R	11	R					2.9	R				
855	28	8	2010	1	3	19.5	40.19	31.83	R	5	R					3.2	R				
856	28	8	2010	1	52	42.5	38.89	27.87	R	4	R					3.0	R				
857	28	8	2010	1	56	52.4	38.29	38.78	R	17	R					2.7	R				
858	28	8	2010	2	10	34.9	38.60	44.63	R	5	R					3.3	R	3.3	R		
859	28	8	2010	2	20	57.4	39.36	27.94	R	5	R					2.8	R				
860	28	8	2010	2	51	29.2	39.11	28.98	R	5	R					2.9	R				

TÜRKİYE DEPREM ETKİNLİĞİ (2010 YILI AĞUSTOS AYI)

No	Tarih - Date			Zaman - Time			Koordinat - Coordinate			Derinlik - Depth		Magnitüd - Magnitude									
	Gün	Ay	Yıl	Saat	Dak.	San.	Enlem-K	Boylam-D	Ref	Km.	Ref	Ms	Ref	Mb	Ref	Md	Ref	MI	Ref	Mw	Ref
861	28	8	2010	4	4	47.6	37.72	27.46	R	5	R					2.8	R				
862	28	8	2010	4	38	26.2	38.85	25.66	R	21	R					2.9	R				
863	28	8	2010	4	49	1.9	40.16	41.28	R	13	R					3.0	R				
864	28	8	2010	5	30	31.1	40.22	27.04	R	5	R					3.0	R				
865	28	8	2010	5	38	30.1	37.59	36.13	R	5	R					3.1	R				
866	28	8	2010	6	40	37.0	37.63	35.81	R	5	R					2.3	R				
867	28	8	2010	7	25	32.8	37.21	28.33	R	23	R					2.6	R				
868	28	8	2010	8	42	0.7	37.24	28.18	R	2	R					2.7	R				
869	28	8	2010	8	49	14.0	37.25	28.20	R	7	R					2.7	R				
870	28	8	2010	10	12	2.2	37.65	34.74	R	5	R					2.8	R				
871	28	8	2010	11	58	9.7	40.84	27.90	R	10	R					2.7	R				
872	28	8	2010	12	7	19.8	40.29	29.13	R	8	R					2.7	R				
873	28	8	2010	12	17	39.5	40.53	30.57	R	9	R					2.5	R				
874	28	8	2010	12	28	34.0	39.76	30.11	R	4	R					2.8	R				
875	28	8	2010	12	49	5.3	39.96	27.37	R	4	R					2.8	R				
876	28	8	2010	12	59	27.6	40.12	29.43	R	7	R					2.7	R				
877	28	8	2010	13	26	9.4	38.87	27.84	R	4	R					2.6	R				
878	28	8	2010	13	47	46.4	37.16	28.19	R	12	R					2.6	R				
879	28	8	2010	14	6	36.1	40.19	41.30	R	5	R					2.9	R				
880	28	8	2010	14	14	51.5	37.08	44.21	R	4	R							3.6	R		

TÜRKİYE DEPREM ETKİNLİĞİ (2010 YILI AĞUSTOS AYI)

No	Tarih - Date			Zaman - Time			Koordinat - Coordinate			Derinlik - Depth		Magnitüd - Magnitude									
	Gün	Ay	Yıl	Saat	Dak.	San.	Enlem-K	Boylam-D	Ref	Km.	Ref	Ms	Ref	Mb	Ref	Md	Ref	MI	Ref	Mw	Ref
881	28	8	2010	14	29	25.6	39.91	29.93	R	10	R					2.8	R				
882	28	8	2010	14	47	32.2	39.35	29.74	R	8	R					2.7	R				
883	28	8	2010	15	1	3.1	39.32	27.84	R	9	R					2.8	R				
884	28	8	2010	15	27	39.7	39.96	28.74	R	7	R					2.8	R				
885	28	8	2010	16	4	36.8	42.17	34.82	R	16	R					3.0	R				
886	28	8	2010	16	18	29.9	37.20	27.70	R	2	R					2.6	R				
887	28	8	2010	16	46	3.7	37.26	27.68	R	12	R					2.7	R				
888	28	8	2010	16	54	11.6	41.29	43.94	R	5	R					2.8	R				
889	28	8	2010	17	35	54.4	39.92	29.17	R	4	R					3.0	R				
890	28	8	2010	18	6	55.6	40.79	34.72	R	5	R					3.2	R				
891	28	8	2010	18	15	5.9	40.08	31.70	R	5	R					3.0	R				
892	28	8	2010	18	34	54.6	38.41	35.01	R	5	R					3.0	R				
893	28	8	2010	18	35	20.2	37.85	39.65	R	12	R					2.7	R				
894	28	8	2010	19	40	47.8	37.54	35.56	R	5	R					3.1	R				
895	28	8	2010	21	1	13.1	35.93	26.36	R	3	R					3.0	R				
896	28	8	2010	21	18	30.5	37.04	28.84	R	8	R					2.7	R				
897	28	8	2010	22	42	38.5	37.19	37.23	R	11	R					2.8	R				
898	28	8	2010	22	48	2.8	39.18	28.26	R	3	R					2.9	R				
899	28	8	2010	23	25	7.6	37.20	27.70	R	2	R					2.6	R				
900	28	8	2010	23	25	14.5	42.01	26.36	R	5	R					3.1	R				

TÜRKİYE DEPREM ETKİNLİĞİ (2010 YILI AĞUSTOS AYI)

No	Tarih - Date			Zaman - Time			Koordinat - Coordinate			Derinlik - Depth		Magnitüd - Magnitude									
	Gün	Ay	Yıl	Saat	Dak.	San.	Enlem-K	Boylam-D	Ref	Km.	Ref	Ms	Ref	Mb	Ref	Md	Ref	MI	Ref	Mw	Ref
901	28	8	2010	23	31	3.5	35.96	36.17	R	21	R					3.0	R				
902	29	8	2010	0	35	18.9	38.75	31.23	R	5	R					3.3	R				
903	29	8	2010	0	51	57.6	38.66	23.38	N	22	N							4.3	5		
904	29	8	2010	0	57	11.9	38.18	30.21	R	5	R					3.3	R				
905	29	8	2010	2	13	17.8	40.30	25.68	R	14	R					2.7	R				
906	29	8	2010	2	29	17.6	38.38	26.69	R	11	R					2.7	R				
907	29	8	2010	3	53	58.5	39.49	25.06	R	9	R					3.2	R				
908	29	8	2010	5	33	14.1	38.43	34.07	R	8	R					2.6	R				
909	29	8	2010	5	38	35.6	39.69	24.17	R	14	R							3.9	R		
910	29	8	2010	6	22	31.4	37.22	28.18	R	3	R					2.7	R				
911	29	8	2010	6	26	31.4	37.23	28.20	R	10	R					2.8	R				
912	29	8	2010	7	2	46.7	40.14	29.89	R	13	R					2.7	R				
913	29	8	2010	8	17	34.3	37.24	28.19	R	3	R					2.7	R				
914	29	8	2010	8	26	22.9	37.27	28.22	R	9	R					2.8	R				
915	29	8	2010	8	53	0.9	37.23	28.23	R	18	R					2.6	R				
916	29	8	2010	9	5	55.9	39.93	29.14	R	6	R					2.8	R				
917	29	8	2010	9	37	2.1	37.68	35.48	R	17	R					2.5	R				
918	29	8	2010	10	59	9.4	37.33	30.98	R	5	R					2.8	R				
919	29	8	2010	14	42	38.2	39.48	38.51	R	5	R					2.9	R				
920	29	8	2010	14	55	52.4	39.27	27.67	R	5	R					2.7	R				

TÜRKİYE DEPREM ETKİNLİĞİ (2010 YILI AĞUSTOS AYI)

No	Tarih - Date			Zaman - Time			Koordinat - Coordinate			Derinlik - Depth		Magnitüd - Magnitude									
	Gün	Ay	Yıl	Saat	Dak.	San.	Enlem-K	Boylam-D	Ref	Km.	Ref	Ms	Ref	Mb	Ref	Md	Ref	MI	Ref	Mw	Ref
921	29	8	2010	15	15	6.3	39.86	29.17	R	14	R					2.7	R				
922	29	8	2010	15	37	1.4	37.17	28.16	R	5	R					2.7	R				
923	29	8	2010	16	3	11.6	37.96	35.61	R	9	R					2.8	R				
924	29	8	2010	16	52	0.9	39.92	42.66	R	8	R					2.8	R				
925	29	8	2010	18	18	7.4	35.72	36.26	R	15	R					2.9	R				
926	29	8	2010	21	12	40.4	38.54	26.75	R	27	R					2.7	R				
927	29	8	2010	21	47	44.0	39.26	35.28	R	8	R					2.9	R				
928	29	8	2010	21	53	36.5	38.53	26.67	R	5	R					3.0	R				
929	29	8	2010	22	5	55.2	36.74	29.26	R	10	R					2.7	R				
930	29	8	2010	22	9	46.8	40.81	34.06	R	7	R					3.2	R				
931	29	8	2010	22	23	42.4	38.93	40.44	R	15	R					2.7	R				
932	29	8	2010	23	40	19.7	39.40	35.26	R	5	R					2.9	R				
933	30	8	2010	0	17	50.6	37.79	30.83	R	7	R					3.3	R				
934	30	8	2010	0	25	21.0	36.94	29.26	R	6	R					2.7	R				
935	30	8	2010	1	30	6.3	36.83	29.31	R	8	R					2.6	R				
936	30	8	2010	2	12	47.3	38.25	26.56	R	9	R					2.9	R				
937	30	8	2010	2	46	31.3	39.95	42.56	R	10	R					3.1	R				
938	30	8	2010	2	57	21.0	37.06	28.88	R	9	R					2.7	R				
939	30	8	2010	3	15	28.2	39.38	39.52	R	15	R					2.8	R				
940	30	8	2010	3	41	30.4	39.69	41.79	R	20	R					2.8	R				

TÜRKİYE DEPREM ETKİNLİĞİ (2010 YILI AĞUSTOS AYI)

No	Tarih - Date			Zaman - Time			Koordinat - Coordinate			Derinlik - Depth		Magnitüd - Magnitude									
	Gün	Ay	Yıl	Saat	Dak.	San.	Enlem-K	Boylam-D	Ref	Km.	Ref	Ms	Ref	Mb	Ref	Md	Ref	MI	Ref	Mw	Ref
941	30	8	2010	3	54	47.3	38.37	27.44	R	6	R					2.6	R				
942	30	8	2010	4	2	42.9	36.89	27.65	R	5	R					2.6	R				
943	30	8	2010	5	24	52.2	38.89	26.98	R	13	R					2.6	R				
944	30	8	2010	6	25	10.7	36.45	40.91	R	5	R					3.5	R				
945	30	8	2010	6	35	2.8	40.60	28.96	R	6	R					2.8	R	2.5	R		
946	30	8	2010	6	38	41.3	40.56	28.95	R	12	R					2.4	R				
947	30	8	2010	7	25	46.8	37.23	28.18	R	2	R					2.6	R				
948	30	8	2010	8	8	1.6	36.62	28.93	R	24	R					3.4	R	3.4	R		
949	30	8	2010	8	28	36.4	38.23	31.70	R	4	R							2.0	R		
950	30	8	2010	8	56	21.1	37.05	27.92	R	22	R					2.2	R				
951	30	8	2010	9	8	27.1	37.55	35.54	R	6	R							2.6	R		
952	30	8	2010	9	16	32.3	37.08	27.91	R	5	R							1.8	R		
953	30	8	2010	9	32	28.9	39.76	41.88	R	20	R							2.4	R		
954	30	8	2010	13	39	0.9	36.92	28.07	R	5	R					2.5	R				
955	30	8	2010	13	55	15.6	37.22	28.18	R	2	R							1.4	R		
956	30	8	2010	15	39	26.7	34.84	27.75	R	3	R							3.6	R		
957	30	8	2010	17	24	26.5	37.96	28.79	R	9	R					3.1	R				
958	30	8	2010	18	2	36.9	39.92	40.80	R	4	R					2.4	R				
959	30	8	2010	19	58	38.2	39.95	39.85	R	5	R					2.5	R				
960	30	8	2010	22	9	5.1	38.14	32.65	R	8	R					2.8	R				

TÜRKİYE DEPREM ETKİNLİĞİ (2010 YILI AĞUSTOS AYI)

No	Tarih - Date			Zaman - Time			Koordinat - Coordinate			Derinlik - Depth		Magnitüd - Magnitude									
	Gün	Ay	Yıl	Saat	Dak.	San.	Enlem-K	Boylam-D	Ref	Km.	Ref	Ms	Ref	Mb	Ref	Md	Ref	MI	Ref	Mw	Ref
961	31	8	2010	1	40	3.7	39.35	27.98	R	2	R					2.8	R				
962	31	8	2010	2	22	19.6	40.47	31.92	R	6	R					2.5	R				
963	31	8	2010	2	51	16.8	39.35	27.97	R	11	R					2.7	R				
964	31	8	2010	7	45	7.9	37.22	28.14	R	5	R					2.7	R				
965	31	8	2010	8	7	5.0	39.36	27.97	R	5	R					2.6	R				
966	31	8	2010	9	11	25.8	39.24	27.80	R	4	R					2.6	R				
967	31	8	2010	10	22	50.6	37.50	38.58	R	8	R					3.2	R				
968	31	8	2010	10	51	59.5	36.81	28.05	R	5	R					2.7	R				
969	31	8	2010	11	20	40.7	38.52	29.15	R	5	R					2.4	R				
970	31	8	2010	12	11	38.2	39.64	35.32	R	15	R					2.8	R				
971	31	8	2010	13	25	39.0	40.59	27.03	R	9	R					2.4	R				
972	31	8	2010	15	32	35.9	39.38	36.71	R	14	R					2.9	R				
973	31	8	2010	15	37	20.8	40.18	41.02	R	14	R					2.4	R				
974	31	8	2010	15	40	35.6	37.64	35.53	R	8	R					2.3	R				
975	31	8	2010	16	4	1.6	39.96	28.13	R	6	R					2.6	R				
976	31	8	2010	19	52	26.5	39.79	39.17	R	5	R					2.2	R				
977	31	8	2010	21	16	11.7	37.05	28.87	R	8	R					2.8	R				