



Kandilli Rasathanesi Ve Deprem Araştırma Enstitüsü

ULUSAL DEPREM İZLEME MERKEZİ



*2009 TEMMUZ AYI
BÜLTENİ*

*YIL: 6 - SAYI: 67
İSTANBUL*

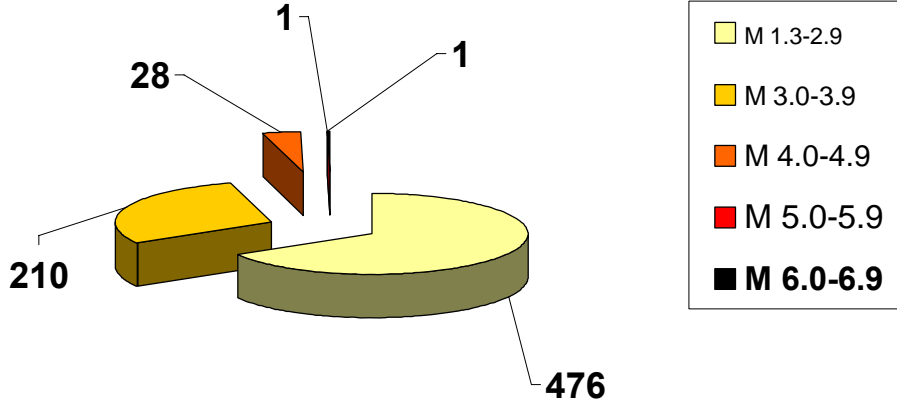
Hazırlayan ve Katkıda Bulunanlar

D. Kalafat
K. Kekovalı
K. Kılıç
Y. Güneş
M. Yilmazer
Z. Öğütcü
M. Kara
M. Suvarıklı
A. Küsmezer
F. Kılıçer Bekler
P. Deniz
A. Berberoğlu
M. Çomoğlu
M. Berberoğlu
H. Gümüş
S. Altuncu
D.Kepekçi
R.Polat
Ö.Çok

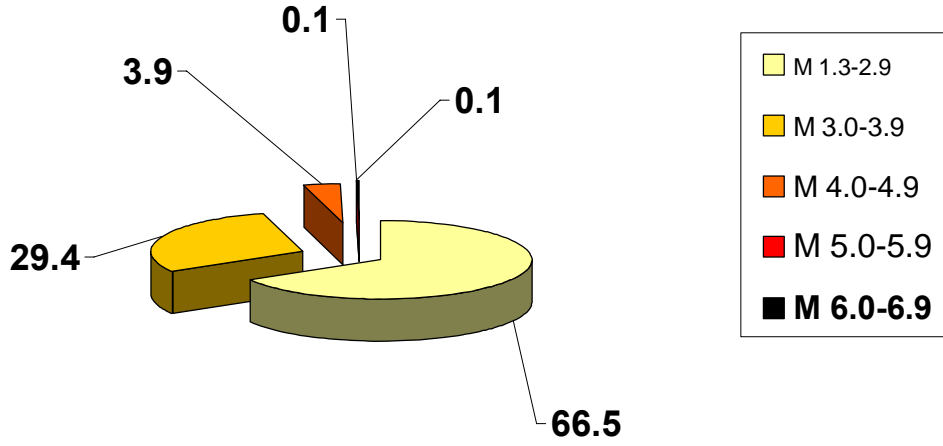
2009 yılı Temmuz ayında meydana gelen depremlerin
istatistiksel dağılımı

MAGNİTÜD ARALIĞI	TOPLAM
1.3-2.9	476
3.0-3.9	210
4.0-4.9	28
5.0-5.9	1
6.0-6.9	1
7.0-7.9	—
TOPLAM	716

2009 TEMMUZ AYI DEPREMLERİNİN İSTATİSTİKSEL DAĞILIMI
(Toplam: 716 Adet)



2009 TEMMUZ AYI DEPREMLERİNİN İSTATİSTİKSEL DAĞILIMI (%)



DEĞERLENDİRME

Temmuz ayında toplam 716 depremin çözümlü yapılmıştır. Büyüklüğü 4.0 ve üzerinde olan deprem sayısı 30 adettir. Toplam meydana gelen depremlerin % 66.5 oranını büyüklükleri M=1.3-2.9 arasındaki depremler oluşturmaktadır.

Toplam 96 adet geniş bantlı (Broad Band) istasyonun Temmuz ayı içerisindeki çalışma performansları % 85 dir. İstasyon verimliliklerine baktığımızda, Çorlu (CRLT), Erikli (ERIK), Gökçeada (GADA), Gaziantep (GAZ), Trabzon (KTUT), Mersin (MERS), Marmaraadası (MRMT), Van (VANB) ve Varto (VRTB) bu ay içerisindeki verimsiz istasyonlardır.

Toplam 27 adet kısa periyotlu (SP) istasyonun Temmuz ayı içerisindeki çalışma performansları % 92 olup, Akhisar (AKS) istasyonu bu ay içindeki verimsiz istasyondur.

Temmuz ayı itibarıyla deprem istasyonlarının ve *sismik ağın ortalama verimlilik performansı % 87* olmuştur.

09 Temmuz 2009'da Kırklareli – Pınarhisar'a uydu iletişimli geniş bantlı (Broadband) deprem istasyonu (PHSR) kurulmuştur.

Temmuz ayındaki en önemli deprem, 01.07.2009 saat 09:30 (GMT)'de M=6.4 Akdeniz'de meydana gelmiştir. Bundan başka; 30.07.2009 saat 07:37 M=5.0 Çağlayan-Erzincan, 01.07.2009 saat 09:59 (GMT) M=4.9 Akdeniz, 07.07.2009 saat 01:02 (GMT) M=4.8 Akdeniz, 01.07.2009 saat 09:42 (GMT) M=4.7 Akdeniz, 24.07.2009 saat 05:48 (GMT) M=4.7 Kozan-Adana, , 28.07.2009 saat 17:38 (GMT) M=4.5 Kaş Açıkları-Antalya-Akdeniz, 07.07.2009 saat 15:57 M=4.5 Pütürge-Malatya olan orta büyüklükte deprem aktiviteleri meydana gelmiştir.

Ayrıca, Kozan-Adana, Balıkesir, Çameli-Honaz-Sarayköy-Akköy-Denizli, Ladik-Samsun, Kayseri, Afşar-Bala-Ankara, Çınarcık-Yalova, Gemlik-Bursa, Tekirdağ Açıkları-Marmara Denizi'nde, Saros Körfezi'nde, Oniki Adalar bölgesinde, Çandarlı Körfezi-İzmir, Gökova Körfezi-Muğla, Simav-Kütahya'da, Ege Denizi'nin Türkiye kıyıları boyunca meydana gelen deprem etkinlikleri dikkat çekmektedir. Erzincan, Şanlıurfa ve Doğu Anadolu Fay Zonu boyunca, Sivrice-Elazığ, Akçadağ-Doğanşehir-Sürgü-Malatya'da deprem etkinlikleri gözlenmiştir.

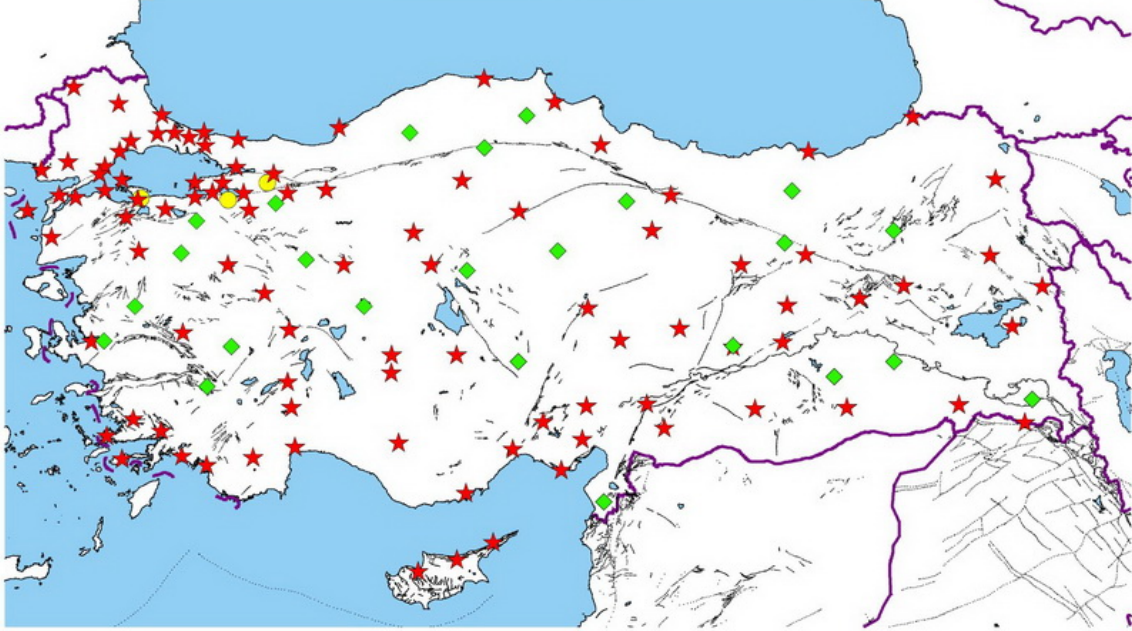
TEMMUZ 2009

İSTASYON VERİMLİLİK

TABLolarI

B.Ü.
KANDİLLİ RASATHANESİ VE DEPREM ARAŞTIRMA ENSTİTÜSÜ
ULUSAL DEPREM İZLEME MERKEZİ
DEPREM İSTASYONLARI

Temmuz 2009
Toplam: 123 Adet



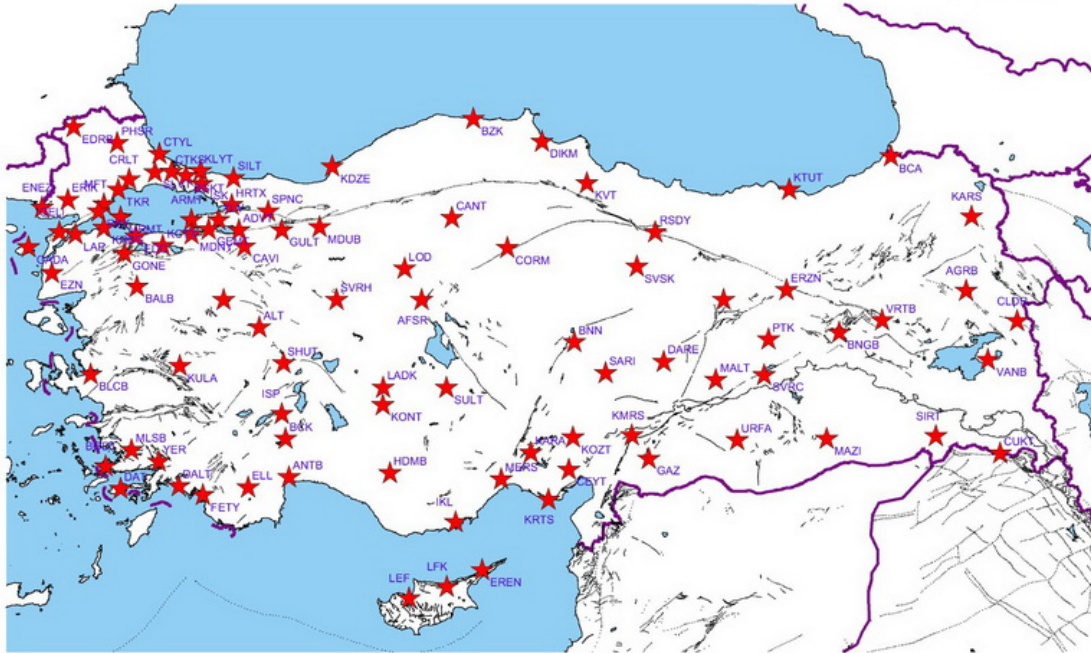
★ GENİŞ BAND

◆ KISA PERİYOT

● TELEMETRİ KISA PERİYOT

BROAD BAND DEPREM İSTASYONLARI

Temmuz 2009
96 Adet



Adet	Yontem	Kod	(+)adet	(-)adet	TOPLAM GUN	(+)%	(-)%	(+)%	(-)%
1	1	ADVT	31	0	31	100	0		
2	2	AFSR	31	0	31	100	0		
3	3	AGRB	30	1	31	97	3		
4	4	ALT	31	0	31	100	0		
5	5	ANTB	15	16	31	48	52		
6	6	ARMT	31	0	31	100	0		
7	7	BALB	31	0	31	100	0		
8	8	BCA	29	2	31	94	6		
9	9	BCK	31	0	31	100	0		
10	10	BGKT	31	0	31	100	0		
11	11	BLCB	15	16	31	48	52		
12	12	BNGB	31	0	31	100	0		
13	13	BNN	31	0	31	100	0		
14	14	BODT	31	0	31	100	0		
15	15	BZK	24	7	31	77	23		
16	16	CANT	30	1	31	97	3		
17	17	CAVI	31	0	31	100	0		
18	18	CEYT	30	1	31	97	3		
19	19	CLDR	26	5	31	84	16		
20	20	CORM	31	0	31	100	0		
21	21	CRLT	0	31	31	0	100		
22	22	CTKS	31	0	31	100	0		
23	23	CTYL	31	0	31	100	0		
24	24	CUKT	31	0	31	100	0		
25	25	DALY	31	0	31	100	0		
26	26	DARE	31	0	31	100	0		
27	27	DAT	31	0	31	100	0		
28	28	DIKM	30	1	31	97	3		
29	29	EDC	0	31	31	74	26		
30	30	EDRB	23	8	31	74	26		
31	31	ELL	31	0	31	100	0		
32	32	ENEZ	31	0	31	100	0		
33	33	EREN	28	3	31	90	10		
34	34	ERIK	0	31	31	0	100		
35	35	ERZN	31	0	31	100	0		
36	36	EZN	31	0	31	100	0		
37	37	FETY	29	2	31	94	6		
38	38	GADA	0	31	31	0	100		
39	39	GAZ	0	31	31	0	100		
40	40	GELI	24	7	31	77	23		
41	41	GEMT	25	6	31	81	19		
42	42	GONE	30	1	31	97	3		
43	43	GULT	31	0	31	100	0		
44	44	HDMB	11	20	31	35	65		
45	45	HRTX	31	0	31	100	0		
46	46	IKL	31	0	31	100	0		
47	47	ILIC	31	0	31	100	0		
48	48	ISK	31	0	31	100	0		
49	49	ISP	29	2	31	94	6		
50	50	KARA	30	1	31	97	3		
51	51	KARS	28	3	31	90	10		
52	52	KCTX	31	0	31	100	0		
53	53	KDZE	29	2	31	94	6		
54	54	KLYT	29	2	31	94	6		
55	55	KMRS	31	0	31	100	0		
56	56	KONT	31	0	31	100	0		
57	57	KOZT	31	0	31	100	0		
58	58	KRBG	31	0	31	100	0		
59	59	KRTS	31	0	31	100	0		
60	60	KTUT	0	31	31	0	100		
61	61	KULA	31	0	31	100	0		
62	62	KVT	31	0	31	100	0		
63	63	LADK	31	0	31	100	0		
64	64	LAP	31	0	31	100	0		
65	65	LEF	30	1	31	97	3		
66	66	LFK	31	0	31	100	0		
67	67	LOD	31	0	31	100	0		
68	68	MALT	30	1	31	97	3		
69	69	MAZI	31	0	31	100	0		
70	70	MDUB	31	0	31	100	0		
71	71	MDYN	31	0	31	100	0		
72	72	MERS	0	31	31	0	100		
73	73	MFTX	31	0	31	100	0		
74	74	MLSB	31	0	31	100	0		
75	75	MRMT	0	31	31	0	100		
76	76	PHSR	22	0	22	100	0		
77	77	PTK	31	0	31	100	0		
78	78	RKY	30	1	31	97	3		
79	79	RSDY	31	0	31	100	0		
80	80	SARIZ	26	5	31	84	16		
81	81	SHUT	31	0	31	100	0		
82	82	SILT	31	0	31	100	0		
83	83	SIRT	30	1	31	97	3		
84	84	SPNC	30	1	31	97	3		
85	85	SLVT	31	0	31	100	0		
86	86	SULT	28	3	31	90	10		
87	87	SVRC	21	10	31	68	32		
88	88	SVRH	31	0	31	100	0		
89	89	SVSK	31	0	31	100	0		
90	90	TKR	31	0	31	100	0		
91	91	TVSB	31	0	31	100	0		
92	92	URFA	31	0	31	100	0		
93	93	VANB	0	31	31	0	100		
94	94	VRTB	0	31	31	0	100		
95	95	YER	31	0	31	100	0		
96	96	YLVX	31	0	31	100	0		

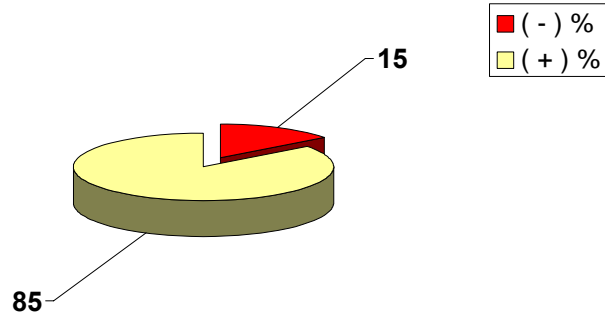
GENİŞ BANTLI (BROAD-BAND) İSTASYONLAR

85

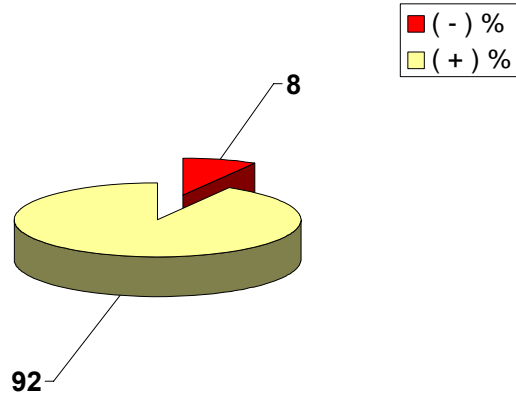
15

97	1	KISA PERİYOT (SHORT PERIOD) İSTASYONLAR	AKS	0	31	31	0	100	92	8
98	2		BNT	31	0	31	100	0		
99	3		BTMT	28	3	31	90	10		
100	4		BYBT	31	0	31	100	0		
101	5		DENT	18	13	31	58	42		
102	6		DIY	31	0	31	100	0		
103	7		DST	29	2	31	94	6		
104	8		ESKT	31	0	31	100	0		
105	9		EYL	31	0	31	100	0		
106	10		EZC	30	1	31	97	3		
107	11		EZM	31	0	31	100	0		
108	12		GPA	31	0	31	100	0		
109	13		GUMT	31	0	31	100	0		
110	14		HKR	13	18	31	42	58		
111	15		HTY	31	0	31	100	0		
112	16		IZI	31	0	31	100	0		
113	17		IZM	31	0	31	100	0		
114	18		KAMT	30	1	31	97	3		
115	19		KHL	31	0	31	100	0		
116	20		KIZT	31	0	31	100	0		
117	21		MYA	30	1	31	97	3		
118	22		NIG	31	0	31	100	0		
119	23		ORLT	31	0	31	100	0		
120	24		SAFT	31	0	31	100	0		
121	25		TOKT	31	0	31	100	0		
122	26		TOS	31	0	31	100	0		
123	27		YOZ	31	0	31	100	0		
							+	(-)		
2009 TEMMUZ ORTALAMA %							87	13		

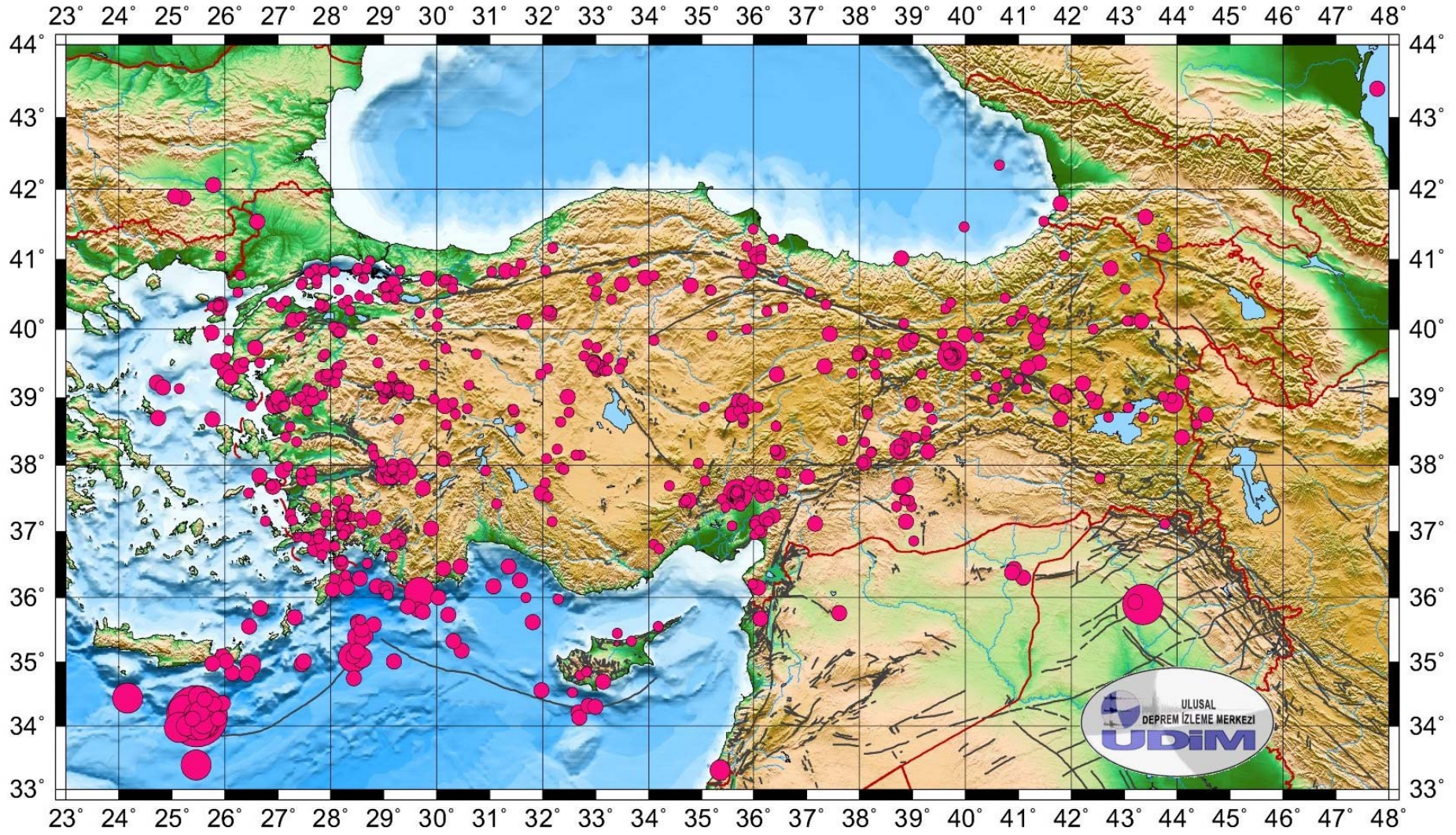
2009 TEMMUZ AYI BROAD-BAND İSTASYONLARI VERİMLİLİK GRAFİĞİ



2009 TEMMUZ AYI SHORT PERIOD İSTASYONLARI VERİMLİLİK GRAFİĞİ



TÜRKİYE VE YAKIN ÇEVRESİ DEPREM ETKİNLİĞİ (TEMMUZ 2009) **Toplam: 716 Adet**



TÜRKİYE DEPREM ETKİNLİĞİ (2009 YILI TEMMUZ AYI)

No	Tarih - Date			Zaman - Time			Koordinat - Coordinate			Derinlik - Depth		Magnitüd - Magnitude									
	Gün	Ay	Yıl	Saat	Dak.	San.	Enlem-K	Boylam-D	Ref	Km.	Ref	Ms	Ref	Mb	Ref	Md	Ref	MI	Ref	Mw	Ref
1	1	7	2009	0	58	37.2	38.41	39.06	R	4	R					2.8	R				
2	1	7	2009	2	43	24.8	34.75	28.44	R	22	R					3.7	R				
3	1	7	2009	3	42	26.3	40.13	27.29	R	13	R					3.0	R				
4	1	7	2009	3	49	15.9	40.53	37.07	R	10	R					2.8	R				
5	1	7	2009	3	57	19.3	39.94	39.56	R	18	R					2.4	R				
6	1	7	2009	9	1	27.6	37.26	27.92	R	26	R					2.2	R				
7	1	7	2009	9	30	10.4	34.16	25.47	N	19	N									6.4	N
8	1	7	2009	9	42	2.2	33.39	25.46	N	20	N			4.7	N			4.6	R		
9	1	7	2009	9	54	36.2	36.20	35.98	R	8	R					2.8	R				
10	1	7	2009	9	59	6.1	34.05	25.62	N	19	N			4.9	N						
11	1	7	2009	10	26	55.5	34.47	25.51	N	41	N			4.0	N						
12	1	7	2009	10	35	8.7	36.63	29.16	R	18	R					2.7	R				
13	1	7	2009	11	43	48.0	37.15	32.18	R	11	R					2.7	R				
14	1	7	2009	12	55	41.7	39.89	27.42	R	15	R					2.1	R				
15	1	7	2009	14	0	18.5	41.61	43.40	R	2	R							3.7	R		
16	1	7	2009	14	38	41.1	38.88	27.09	R	3	R					2.9	R				
17	1	7	2009	14	49	4.8	37.22	28.19	R	6	R					2.7	R				
18	1	7	2009	14	50	3.5	38.63	35.80	R	5	R					2.8	R				
19	1	7	2009	15	17	15.1	41.15	36.14	R	4	R					2.5	R				
20	1	7	2009	15	20	49.0	38.34	38.10	R	15	R					2.4	R				

TÜRKİYE DEPREM ETKİNLİĞİ (2009 YILI TEMMUZ AYI)

No	Tarih - Date			Zaman - Time			Koordinat - Coordinate			Derinlik - Depth		Magnitüd - Magnitude									
	Gün	Ay	Yıl	Saat	Dak.	San.	Enlem-K	Boylam-D	Ref	Km.	Ref	Ms	Ref	Mb	Ref	Md	Ref	MI	Ref	Mw	Ref
21	1	7	2009	17	29	2.9	37.67	38.75	R	8	R					3.3	R				
22	1	7	2009	18	5	41.0	38.89	26.98	R	5	R					3.4	R				
23	1	7	2009	18	9	43.5	38.92	27.09	R	5	R					3.1	R				
24	1	7	2009	18	12	15.5	38.87	26.96	R	14	R					3.5	R				
25	1	7	2009	18	18	19.1	38.92	26.91	R	5	R					3.5	R				
26	1	7	2009	18	27	53.9	38.91	26.99	R	2	R					3.0	R				
27	1	7	2009	18	44	29.4	38.87	27.13	R	7	R					2.9	R				
28	1	7	2009	19	10	53.6	38.92	26.95	R	5	R					3.4	R				
29	1	7	2009	19	12	37.3	40.21	41.04	R	4	R					2.9	R				
30	1	7	2009	19	32	44.2	38.92	27.04	R	5	R					3.3	R				
31	1	7	2009	20	33	31.6	36.81	34.10	R	6	R					2.9	R				
32	1	7	2009	21	10	28.5	38.88	26.93	R	3	R					3.0	R				
33	1	7	2009	21	47	21.3	40.48	28.55	R	12	R					2.6	R				
34	1	7	2009	22	38	35.0	38.33	38.82	R	5	R					2.7	R				
35	1	7	2009	23	20	14.1	40.37	28.23	R	5	R					2.6	R				
36	2	7	2009	0	30	14.8	39.66	38.36	R	8	R					2.8	R				
37	2	7	2009	1	25	21.5	36.99	28.29	R	12	R					2.1	R				
38	2	7	2009	4	18	49.3	38.30	38.81	R	6	R					2.8	R				
39	2	7	2009	6	17	11.7	34.01	25.28	N	11	N			4.2	N						
40	2	7	2009	7	5	36.2	36.44	30.13	R	19	R					3.0	R				

TÜRKİYE DEPREM ETKİNLİĞİ (2009 YILI TEMMUZ AYI)

No	Tarih - Date			Zaman - Time			Koordinat - Coordinate			Derinlik - Depth		Magnitüd - Magnitude									
	Gün	Ay	Yıl	Saat	Dak.	San.	Enlem-K	Boylam-D	Ref	Km.	Ref	Ms	Ref	Mb	Ref	Md	Ref	MI	Ref	Mw	Ref
41	2	7	2009	8	45	53.8	38.37	37.67	R	9	R					2.6	R				
42	2	7	2009	8	49	27.5	37.26	28.19	R	6	R					2.6	R				
43	2	7	2009	11	21	58.4	39.34	36.44	R	5	R					3.0	R				
44	2	7	2009	11	57	34.7	40.80	27.73	R	7	R					2.7	R				
45	2	7	2009	12	10	14.0	40.81	27.70	R	8	R					3.2	R	3.0	R		
46	2	7	2009	12	21	23.0	40.04	30.01	R	9	R					2.8	R				
47	2	7	2009	12	42	59.3	35.08	28.43	R	5	R					4.5	R				
48	2	7	2009	14	28	13.7	37.27	28.22	R	7	R					2.4	R				
49	2	7	2009	14	40	26.7	39.03	41.88	R	5	R					3.9	R				
50	2	7	2009	14	52	3.9	37.28	28.23	R	11	R					2.7	R				
51	2	7	2009	15	25	39.1	34.70	33.14	R	8	R					3.2	R				
52	2	7	2009	15	36	11.2	40.41	27.16	R	18	R					2.0	R				
53	2	7	2009	16	4	47.8	38.76	30.36	R	2	R					2.9	R				
54	2	7	2009	16	31	4.8	40.31	27.82	R	5	R					2.3	R				
55	2	7	2009	18	0	44.8	36.29	28.55	R	28	R					3.3	R				
56	2	7	2009	19	4	34.2	40.88	42.74	R	5	R					3.1	R				
57	2	7	2009	19	47	50.2	34.25	25.22	N	22	N			4.7	N						
58	2	7	2009	20	24	18.9	37.90	29.49	R	5	R					3.4	R				
59	2	7	2009	21	35	42.8	39.07	41.74	R	5	R					3.1	R				
60	2	7	2009	22	7	23.7	35.67	36.13	R	10	R					3.4	R				

TÜRKİYE DEPREM ETKİNLİĞİ (2009 YILI TEMMUZ AYI)

No	Tarih - Date			Zaman - Time			Koordinat - Coordinate			Derinlik - Depth		Magnitüd - Magnitude										
	Gün	Ay	Yıl	Saat	Dak.	San.	Enlem-K	Boylam-D	Ref	Km.	Ref	Ms	Ref	Mb	Ref	Md	Ref	MI	Ref	Mw	Ref	
61	2	7	2009	22	36	43.1	34.09	25.61	N	7	N			4.6	N							
62	2	7	2009	22	14	2.9	39.02	41.88	R	5	R					3.8	R					
63	2	7	2009	23	16	55.1	38.68	39.37	R	18	R					2.3	R					
64	3	7	2009	0	9	19.4	39.15	40.59	R	9	R					2.7	R					
65	3	7	2009	0	35	56.6	37.38	38.70	R	4	R					2.9	R					
66	3	7	2009	0	38	26.3	36.17	28.87	R	30	R					3.6	R					
67	3	7	2009	1	28	16.2	36.92	27.38	R	5	R					2.9	R					
68	3	7	2009	2	11	40.6	36.26	31.57	R	17	R					3.4	R					
69	3	7	2009	4	16	41.7	33.95	25.55	R	17	R			4.3	N			4.1	R			
70	3	7	2009	4	17	57.8	34.09	25.59	N	20	N			4.7	N			4.4	R			
71	3	7	2009	4	29	33.2	39.98	28.16	R	3	R					3.2	R					
72	3	7	2009	4	42	32.2	34.44	24.16	N	37	N			4.6	N							
73	3	7	2009	6	11	15.9	37.48	28.33	R	11	R					2.3	R					
74	3	7	2009	7	29	48.6	37.04	28.36	R	5	R					2.2	R					
75	3	7	2009	9	7	26.1	35.29	33.40	R	2	R					1.3	R					
76	3	7	2009	9	8	23.6	37.35	28.27	R	8	R					2.6	R					
77	3	7	2009	9	36	17.9	34.23	25.55	N	37	N			4.0	N							
78	3	7	2009	9	41	35.7	37.87	29.22	R	4	R					3.1	R					
79	3	7	2009	9	52	11.6	38.57	27.23	R	7	R					2.9	R					
80	3	7	2009	10	20	40.7	40.66	27.74	R	6	R					2.7	R					

TÜRKİYE DEPREM ETKİNLİĞİ (2009 YILI TEMMUZ AYI)

No	Tarih - Date			Zaman - Time			Koordinat - Coordinate			Derinlik - Depth		Magnitüd - Magnitude									
	Gün	Ay	Yıl	Saat	Dak.	San.	Enlem-K	Boylam-D	Ref	Km.	Ref	Ms	Ref	Mb	Ref	Md	Ref	MI	Ref	Mw	Ref
81	3	7	2009	10	24	42.2	38.92	30.31	R	6	R					2.8	R				
82	3	7	2009	11	6	5.5	42.34	40.64	R	14	R					2.9	R				
83	3	7	2009	11	31	49.8	36.93	27.36	R	12	R					1.8	R				
84	3	7	2009	12	8	49.0	35.58	28.81	R	32	R					3.1	R				
85	3	7	2009	13	28	24.8	41.08	36.04	R	5	R					3.1	R				
86	3	7	2009	14	2	47.3	41.19	35.87	R	8	R					2.7	R				
87	3	7	2009	15	46	17.4	37.71	38.87	R	10	R					3.0	R				
88	3	7	2009	22	33	5.9	37.89	29.09	R	6	R					3.0	R				
89	4	7	2009	2	41	46.4	39.34	27.87	R	5	R					2.9	R				
90	4	7	2009	3	13	24.8	37.88	36.60	R	5	R					2.9	R				
91	4	7	2009	3	21	8.1	35.07	28.58	R	52	R					4.1	R				
92	4	7	2009	3	31	21.4	39.38	33.03	R	2	R					2.8	R				
93	4	7	2009	4	53	0.9	37.64	36.55	R	25	R					2.3	R				
94	4	7	2009	5	8	16.6	37.68	38.80	R	2	R					3.1	R				
95	4	7	2009	7	30	46.3	37.26	28.21	R	6	R					2.4	R				
96	4	7	2009	8	30	37.3	38.88	30.15	R	5	R					3.0	R				
97	4	7	2009	10	26	7.5	41.02	38.79	R	26	R					3.0	R				
98	4	7	2009	12	36	18.0	40.81	27.71	R	6	R							3.2	R		
99	4	7	2009	15	52	24.2	38.80	38.14	R	5	R					2.8	R				
100	4	7	2009	17	18	52.4	39.01	32.47	R	5	R					3.0	R				

TÜRKİYE DEPREM ETKİNLİĞİ (2009 YILI TEMMUZ AYI)

No	Tarih - Date			Zaman - Time			Koordinat - Coordinate			Derinlik - Depth		Magnitüd - Magnitude									
	Gün	Ay	Yıl	Saat	Dak.	San.	Enlem-K	Boylam-D	Ref	Km.	Ref	Ms	Ref	Mb	Ref	Md	Ref	MI	Ref	Mw	Ref
101	4	7	2009	17	43	25.6	37.21	28.81	R	16	R					3.4	R				
102	4	7	2009	17	51	10.5	37.89	29.15	R	7	R					2.8	R				
103	4	7	2009	17	52	39.2	40.71	27.74	R	23	R					2.6	R				
104	4	7	2009	18	22	28.9	37.90	28.98	R	8	R					3.0	R				
105	4	7	2009	18	54	31.6	37.82	29.00	R	5	R					3.1	R				
106	4	7	2009	18	58	34.9	37.91	29.14	R	9	R					2.7	R				
107	4	7	2009	19	8	41.7	37.82	29.17	R	5	R					3.5	R				
108	4	7	2009	19	45	27.3	37.68	26.91	R	5	R					3.0	R				
109	4	7	2009	20	0	20.0	37.90	29.13	R	5	R					3.0	R				
110	4	7	2009	20	5	10.7	37.89	29.09	R	5	R					3.2	R				
111	4	7	2009	20	34	57.4	37.91	29.09	R	5	R					2.7	R				
112	4	7	2009	20	48	49.2	38.21	39.29	R	5	R					3.2	R				
113	4	7	2009	22	40	58.7	37.88	29.12	R	2	R					3.4	R				
114	4	7	2009	22	54	44.6	37.89	29.10	R	3	R					3.1	R				
115	5	7	2009	0	52	1.3	34.36	25.96	R	34	R							3.5	R		
116	5	7	2009	4	45	5.0	40.74	33.03	R	8	R					2.9	R				
117	5	7	2009	6	43	12.2	40.17	27.42	R	5	R					2.4	R				
118	5	7	2009	9	4	28.9	37.93	29.16	R	9	R					2.5	R				
119	5	7	2009	16	14	21.7	37.52	32.10	R	9	R					2.8	R				
120	5	7	2009	17	14	46.7	40.62	29.02	R	5	R					2.6	R				

TÜRKİYE DEPREM ETKİNLİĞİ (2009 YILI TEMMUZ AYI)

No	Tarih - Date			Zaman - Time			Koordinat - Coordinate			Derinlik - Depth		Magnitüd - Magnitude									
	Gün	Ay	Yıl	Saat	Dak.	San.	Enlem-K	Boylam-D	Ref	Km.	Ref	Ms	Ref	Mb	Ref	Md	Ref	MI	Ref	Mw	Ref
121	5	7	2009	19	47	27.4	37.83	29.14	R	2	R					3.4	R				
122	5	7	2009	22	4	42.8	36.89	29.04	R	5	R					2.6	R				
123	5	7	2009	23	48	24.8	38.93	43.92	R	4	R					4.0	R	4.0	R		
124	6	7	2009	0	15	3.8	40.86	28.66	R	14	R					2.5	R				
125	6	7	2009	1	6	18.0	36.12	28.04	R	21	R					3.5	R				
126	6	7	2009	1	29	54.1	38.99	43.90	R	24	R					2.7	R				
127	6	7	2009	2	46	46.3	39.10	29.42	R	8	R					2.6	R				
128	6	7	2009	2	52	42.3	40.71	28.57	R	8	R					1.9	R				
129	6	7	2009	4	16	0.3	40.73	28.62	R	2	R					2.9	R				
130	6	7	2009	9	11	10.1	38.92	27.03	R	5	R					3.0	R				
131	6	7	2009	9	33	13.8	37.96	28.97	R	22	R					2.6	R				
132	6	7	2009	10	15	3.1	37.18	28.14	R	5	R					2.7	R				
133	6	7	2009	10	58	35.8	37.26	28.20	R	7	R					2.7	R				
134	6	7	2009	13	42	36.5	39.06	29.07	R	5	R					2.8	R				
135	6	7	2009	14	37	29.8	40.23	30.02	R	2	R					2.8	R				
136	6	7	2009	18	41	37.0	40.82	28.06	R	12	R					2.7	R				
137	6	7	2009	20	28	18.1	40.83	28.06	R	14	R					2.7	R				
138	6	7	2009	22	34	23.0	40.83	28.08	R	17	R					2.4	R				
139	7	7	2009	0	32	43.7	33.98	25.14	N	12	N			4.9	N						
140	7	7	2009	1	2	48.0	34.16	25.51	N	25	N			4.8	N						

TÜRKİYE DEPREM ETKİNLİĞİ (2009 YILI TEMMUZ AYI)

No	Tarih - Date			Zaman - Time			Koordinat - Coordinate			Derinlik - Depth		Magnitüd - Magnitude									
	Gün	Ay	Yıl	Saat	Dak.	San.	Enlem-K	Boylam-D	Ref	Km.	Ref	Ms	Ref	Mb	Ref	Md	Ref	MI	Ref	Mw	Ref
141	7	7	2009	1	12	5.2	37.98	27.19	R	14	R					2.5	R				
142	7	7	2009	2	4	20.7	34.96	26.48	R	24	R					4.4	R				
143	7	7	2009	2	44	32.9	39.78	32.85	R	12	R					2.7	R				
144	7	7	2009	5	12	56.7	38.75	35.57	R	5	R					3.3	R				
145	7	7	2009	6	53	51.0	40.32	27.04	R	5	R					2.9	R				
146	7	7	2009	9	22	24.2	37.12	37.16	R	6	R					3.1	R				
147	7	7	2009	10	17	4.3	38.04	28.95	R	6	R					2.6	R				
148	7	7	2009	10	19	48.4	38.68	35.81	R	4	R					2.7	R				
149	7	7	2009	11	27	14.3	39.43	28.11	R	8	R					2.7	R				
150	7	7	2009	12	22	19.6	40.92	35.81	R	5	R					2.6	R				
151	7	7	2009	12	31	36.5	37.38	38.98	R	8	R					2.7	R				
152	7	7	2009	12	50	6.7	35.09	28.43	R	29	R							3.9	R		
153	7	7	2009	14	1	11.8	40.36	37.36	R	6	R					2.9	R				
154	7	7	2009	14	57	55.0	37.29	28.23	R	10	R					2.1	R				
155	7	7	2009	15	57	1.4	38.24	38.76	R	5	R			4.3	N			4.5	R		
156	7	7	2009	16	10	47.0	39.14	29.30	R	3	R					3.0	R				
157	7	7	2009	18	21	48.6	35.55	34.18	R	17	R					2.2	R				
158	7	7	2009	18	42	39.8	38.32	38.75	R	9	R					2.8	R				
159	7	7	2009	19	3	44.2	38.23	38.75	R	14	R					2.2	R				
160	7	7	2009	20	12	10.6	34.12	25.39	R	23	R							3.9	R		

TÜRKİYE DEPREM ETKİNLİĞİ (2009 YILI TEMMUZ AYI)

No	Tarih - Date			Zaman - Time			Koordinat - Coordinate			Derinlik - Depth		Magnitüd - Magnitude									
	Gün	Ay	Yıl	Saat	Dak.	San.	Enlem-K	Boylam-D	Ref	Km.	Ref	Ms	Ref	Mb	Ref	Md	Ref	MI	Ref	Mw	Ref
161	7	7	2009	20	33	47.6	38.79	31.46	R	5	R					2.8	R				
162	7	7	2009	22	35	42.6	35.69	27.32	R	28	R					3.5	R				
163	8	7	2009	1	15	50.6	39.88	40.25	R	5	R					2.7	R				
164	8	7	2009	1	50	39.1	40.61	29.04	R	5	R					2.2	R				
165	8	7	2009	2	7	1.8	40.61	29.04	R	3	R					2.3	R				
166	8	7	2009	2	15	35.1	38.64	32.34	R	5	R					2.5	R				
167	8	7	2009	6	3	25.2	39.64	30.75	R	14	R					2.5	R				
168	8	7	2009	6	19	57.0	34.02	25.46	N	19	N			4.7	N						
169	8	7	2009	9	26	41.7	40.47	29.20	R	19	R					2.6	R				
170	8	7	2009	10	7	39.9	37.49	35.39	R	22	R					2.5	R				
171	8	7	2009	10	38	10.5	37.70	26.87	R	12	R					2.7	R				
172	8	7	2009	12	0	38.4	40.38	39.72	R	16	R					2.1	R				
173	8	7	2009	12	33	3.2	37.30	28.25	R	4	R					2.2	R				
174	8	7	2009	14	20	29.0	40.38	26.89	R	12	R					2.3	R				
175	8	7	2009	16	30	34.1	37.44	34.66	R	5	R					2.8	R				
176	8	7	2009	16	56	20.8	40.36	27.85	R	11	R					2.4	R				
177	8	7	2009	17	28	24.8	38.07	30.13	R	5	R					2.6	R				
178	8	7	2009	19	29	45.2	38.42	27.15	R	12	R					2.5	R				
179	8	7	2009	19	55	27.5	39.49	38.28	R	10	R					2.7	R				
180	8	7	2009	20	53	5.1	39.30	29.16	R	5	R					2.5	R				

TÜRKİYE DEPREM ETKİNLİĞİ (2009 YILI TEMMUZ AYI)

No	Tarih - Date			Zaman - Time			Koordinat - Coordinate			Derinlik - Depth		Magnitüd - Magnitude									
	Gün	Ay	Yıl	Saat	Dak.	San.	Enlem-K	Boylam-D	Ref	Km.	Ref	Ms	Ref	Mb	Ref	Md	Ref	MI	Ref	Mw	Ref
181	9	7	2009	2	0	38.1	40.85	29.31	R	9	R					2.6	R				
182	9	7	2009	2	46	36.7	35.09	25.96	R	5	R					3.7	R				
183	9	7	2009	3	15	12.4	35.02	26.03	R	5	R							3.3	R		
184	9	7	2009	8	20	44.7	37.02	36.11	R	2	R					2.3	R				
185	9	7	2009	8	54	4.1	37.27	28.22	R	4	R					2.3	R				
186	9	7	2009	9	39	26.4	40.46	29.05	R	11	R					2.2	R				
187	9	7	2009	10	51	49.9	36.56	28.21	R	44	R					2.4	R				
188	9	7	2009	12	5	41.5	40.30	39.63	R	3	R					2.7	R				
189	9	7	2009	12	58	38.3	38.86	36.08	R	5	R					2.3	R				
190	9	7	2009	14	34	53.9	39.43	32.09	R	26	R					2.5	R				
191	9	7	2009	14	38	3.4	41.55	41.48	R	17	R					2.3	R				
192	9	7	2009	15	20	19.8	39.58	33.24	R	5	R					2.7	R				
193	9	7	2009	15	33	48.4	37.16	26.77	R	8	R					2.5	R				
194	9	7	2009	15	39	59.0	37.69	34.39	R	3	R					2.4	R				
195	9	7	2009	16	27	41.4	34.05	25.57	N	13	N			4.6	N						
196	9	7	2009	16	55	0.3	37.70	36.01	R	5	R					3.1	R				
197	9	7	2009	18	18	27.2	34.34	25.80	R	40	R							3.6	R		
198	9	7	2009	18	37	18.6	40.48	32.99	R	9	R					2.6	R				
199	9	7	2009	19	19	45.3	37.11	36.02	R	5	R					2.7	R				
200	9	7	2009	20	17	24.2	39.03	29.47	R	13	R					2.8	R				

TÜRKİYE DEPREM ETKİNLİĞİ (2009 YILI TEMMUZ AYI)

No	Tarih - Date			Zaman - Time			Koordinat - Coordinate			Derinlik - Depth		Magnitüd - Magnitude									
	Gün	Ay	Yıl	Saat	Dak.	San.	Enlem-K	Boylam-D	Ref	Km.	Ref	Ms	Ref	Mb	Ref	Md	Ref	MI	Ref	Mw	Ref
201	9	7	2009	20	26	38.7	38.22	38.77	R	8	R					2.8	R				
202	9	7	2009	21	7	2.8	36.97	27.81	R	5	R					2.2	R				
203	9	7	2009	21	7	25.7	37.54	35.64	R	4	R					3.4	R				
204	9	7	2009	21	56	2.3	34.97	27.45	R	29	R					3.8	R				
205	9	7	2009	22	30	36.9	34.80	32.71	R	12	R					2.9	R				
206	9	7	2009	22	50	28.4	37.80	27.49	R	5	R							3.3	R		
207	9	7	2009	22	54	29.6	36.30	41.09	R	5	R					3.5	R				
208	9	7	2009	23	0	57.1	37.86	27.54	R	8	R					2.7	R				
209	9	7	2009	23	4	19.3	37.86	27.56	R	7	R					2.7	R				
210	9	7	2009	23	7	1.7	37.22	27.23	R	11	R					2.7	R				
211	9	7	2009	23	42	15.7	37.29	28.30	R	6	R					2.6	R				
212	9	7	2009	23	52	5.1	40.57	28.15	R	5	R					2.8	R				
213	10	7	2009	0	22	24.3	37.27	27.24	R	8	R					2.3	R				
214	10	7	2009	1	36	35.6	41.06	41.87	R	25	R					2.5	R				
215	10	7	2009	2	5	18.8	36.00	30.03	R	16	R					3.4	R				
216	10	7	2009	3	36	24.4	34.12	25.88	R	7	R					3.6	R				
217	10	7	2009	3	40	10.6	37.17	27.28	R	18	R					2.1	R				
218	10	7	2009	3	45	57.7	38.01	38.24	R	14	R					2.2	R				
219	10	7	2009	4	22	49.5	37.76	35.92	R	9	R					2.4	R				
220	10	7	2009	5	8	24.6	37.94	29.18	R	7	R							3.7	R		

TÜRKİYE DEPREM ETKİNLİĞİ (2009 YILI TEMMUZ AYI)

No	Tarih - Date			Zaman - Time			Koordinat - Coordinate			Derinlik - Depth		Magnitüd - Magnitude										
	Gün	Ay	Yıl	Saat	Dak.	San.	Enlem-K	Boylam-D	Ref	Km.	Ref	Ms	Ref	Mb	Ref	Md	Ref	MI	Ref	Mw	Ref	
221	10	7	2009	6	43	48.4	37.33	28.23	R	9	R					2.4	R					
222	10	7	2009	7	16	57.5	37.92	27.09	R	5	R					3.3	R					
223	10	7	2009	8	36	23.9	34.22	32.68	R	5	R							3.7	R			
224	10	7	2009	8	49	44.5	39.72	30.17	R	13	R					2.6	R					
225	10	7	2009	10	2	14.2	37.15	27.90	R	5	R					2.3	R					
226	10	7	2009	10	5	13.8	34.14	32.69	R	5	R							3.5	R			
227	10	7	2009	10	54	23.2	39.91	35.20	R	5	R					2.4	R					
228	10	7	2009	14	46	38.8	41.44	35.99	R	7	R					2.5	R					
229	10	7	2009	14	56	25.5	38.19	38.22	R	12	R					2.4	R					
230	10	7	2009	15	5	16.5	37.27	28.23	R	5	R					2.2	R					
231	10	7	2009	16	35	58.2	40.33	27.88	R	10	R					2.4	R					
232	10	7	2009	17	7	6.4	40.74	33.94	R	7	R					3.5	R					
233	10	7	2009	18	19	17.9	33.31	35.35	N	10	N					4.0	L					
234	10	7	2009	19	30	57.8	39.02	43.74	R	5	R					2.2	R					
235	10	7	2009	20	7	36.8	34.83	26.14	R	35	R					3.7	R					
236	10	7	2009	21	20	33.9	40.12	43.11	R	9	R					2.8	R					
237	10	7	2009	21	26	18.0	40.12	43.06	R	9	R					2.7	R					
238	10	7	2009	23	58	7.3	40.12	43.06	R	6	R					2.9	R					
239	11	7	2009	5	47	2.6	41.54	26.61	R	5	R					3.1	R					
240	11	7	2009	11	31	45.7	39.51	41.39	R	6	R					3.2	R					

TÜRKİYE DEPREM ETKİNLİĞİ (2009 YILI TEMMUZ AYI)

No	Tarih - Date			Zaman - Time			Koordinat - Coordinate			Derinlik - Depth		Magnitüd - Magnitude									
	Gün	Ay	Yıl	Saat	Dak.	San.	Enlem-K	Boylam-D	Ref	Km.	Ref	Ms	Ref	Mb	Ref	Md	Ref	MI	Ref	Mw	Ref
241	11	7	2009	13	48	52.8	34.17	25.69	R	32	R					4.4	R				
242	11	7	2009	14	28	15.6	37.46	28.12	R	5	R					2.4	R				
243	11	7	2009	14	48	32.5	40.03	28.05	R	5	R					2.7	R				
244	11	7	2009	14	54	29.0	37.26	28.21	R	7	R					2.5	R				
245	11	7	2009	15	19	14.0	40.19	27.46	R	9	R					2.5	R				
246	11	7	2009	15	33	0.5	40.36	27.79	R	5	R					2.1	R				
247	11	7	2009	15	45	17.4	41.29	36.37	R	6	R					2.8	R				
248	11	7	2009	15	57	55.6	40.08	38.84	R	11	R					2.7	R				
249	11	7	2009	16	16	8.6	34.32	32.86	R	10	R					3.1	R				
250	11	7	2009	16	33	31.8	38.76	38.15	R	6	R					2.6	R				
251	11	7	2009	16	59	19.2	37.42	31.13	R	7	R					2.4	R				
252	11	7	2009	17	7	42.0	37.89	36.52	R	5	R					2.3	R				
253	11	7	2009	17	25	10.4	34.53	32.56	R	25	R					2.5	R				
254	11	7	2009	17	37	30.0	39.31	27.79	R	5	R					2.9	R				
255	11	7	2009	18	5	28.3	35.97	32.29	R	10	R					2.9	R				
256	11	7	2009	19	7	53.4	35.65	28.57	R	9	R					2.9	R				
257	11	7	2009	19	33	23.9	39.14	29.30	R	5	R					2.8	R				
258	11	7	2009	20	5	53.8	39.11	29.32	R	5	R					3.0	R				
259	11	7	2009	20	9	18.0	39.46	32.95	R	11	R					2.2	R				
260	11	7	2009	20	24	1.7	40.98	28.74	R	7	R					2.9	R				

TÜRKİYE DEPREM ETKİNLİĞİ (2009 YILI TEMMUZ AYI)

No	Tarih - Date			Zaman - Time			Koordinat - Coordinate			Derinlik - Depth		Magnitüd - Magnitude										
	Gün	Ay	Yıl	Saat	Dak.	San.	Enlem-K	Boylam-D	Ref	Km.	Ref	Ms	Ref	Mb	Ref	Md	Ref	MI	Ref	Mw	Ref	
261	11	7	2009	20	40	16.9	34.31	32.99	R	9	R					3.2	R					
262	11	7	2009	23	19	18.9	34.42	25.62	R	5	R							3.3	R			
263	11	7	2009	23	30	4.2	34.04	25.60	N	20	N			4.4	N							
264	11	7	2009	23	49	18.4	38.41	44.09	R	13	R					3.2	R					
265	12	7	2009	0	23	44.5	39.39	33.17	R	7	R					2.3	R					
266	12	7	2009	0	38	12.0	38.71	42.70	R	5	R					2.7	R					
267	12	7	2009	2	23	30.1	38.02	29.17	R	8	R					2.5	R					
268	12	7	2009	2	25	38.3	40.85	32.06	R	10	R					2.6	R					
269	12	7	2009	2	38	36.2	37.06	28.22	R	17	R					2.2	R					
270	12	7	2009	3	14	59.0	38.06	30.13	R	3	R					2.7	R					
271	12	7	2009	3	22	15.7	41.47	39.98	R	31	R					2.7	R					
272	12	7	2009	4	5	27.7	35.55	26.46	R	5	R					3.9	R					
273	12	7	2009	5	18	13.3	37.55	36.29	R	10	R					2.9	R					
274	12	7	2009	5	30	17.6	39.52	32.97	R	5	R					3.6	R					
275	12	7	2009	6	59	11.3	40.67	29.17	R	2	R					3.3	R					
276	12	7	2009	7	20	12.5	39.51	28.89	R	5	R					2.6	R					
277	12	7	2009	8	41	50.4	40.31	36.55	R	5	R					2.4	R					
278	12	7	2009	8	48	29.4	39.64	38.51	R	8	R					2.5	R					
279	12	7	2009	9	2	41.4	39.13	27.56	R	8	R					2.7	R					
280	12	7	2009	9	24	28.1	37.23	28.19	R	6	R					2.7	R					

TÜRKİYE DEPREM ETKİNLİĞİ (2009 YILI TEMMUZ AYI)

No	Tarih - Date			Zaman - Time			Koordinat - Coordinate			Derinlik - Depth		Magnitüd - Magnitude										
	Gün	Ay	Yıl	Saat	Dak.	San.	Enlem-K	Boylam-D	Ref	Km.	Ref	Ms	Ref	Mb	Ref	Md	Ref	MI	Ref	Mw	Ref	
281	12	7	2009	9	39	12.5	37.25	28.20	R	7	R					2.6	R					
282	12	7	2009	12	37	22.5	36.34	28.28	R	18	R					2.3	R					
283	12	7	2009	12	44	15.7	39.60	27.85	R	6	R					2.8	R					
284	12	7	2009	14	41	59.1	37.30	28.19	R	5	R					2.4	R					
285	12	7	2009	14	47	23.8	37.18	28.18	R	15	R					2.4	R					
286	12	7	2009	14	47	53.5	39.18	30.61	R	14	R					2.3	R					
287	12	7	2009	16	8	59.6	36.74	27.70	R	84	R					3.1	R					
288	12	7	2009	16	26	13.1	38.60	30.18	R	17	R					2.4	R					
289	12	7	2009	16	27	1.4	38.86	35.69	R	5	R					3.0	R					
290	12	7	2009	16	44	13.7	40.26	36.25	R	10	R					2.5	R					
291	12	7	2009	18	19	50.7	40.15	41.27	R	7	R					2.3	R					
292	12	7	2009	18	20	28.2	38.87	35.77	R	11	R					2.5	R					
293	12	7	2009	18	29	29.4	38.85	35.80	R	11	R					2.8	R					
294	12	7	2009	18	48	22.1	38.95	35.78	R	5	R					2.8	R					
295	12	7	2009	18	55	54.2	38.93	35.75	R	10	R					3.0	R					
296	12	7	2009	19	9	42.3	38.88	35.89	R	11	R					3.1	R					
297	12	7	2009	19	51	44.6	39.13	41.16	R	13	R					2.4	R					
298	12	7	2009	20	42	55.3	38.95	35.72	R	10	R					3.0	R					
299	12	7	2009	22	0	51.8	40.53	26.25	R	5	R					2.9	R					
300	12	7	2009	22	36	48.9	34.98	25.77	R	36	R							3.4	R			

TÜRKİYE DEPREM ETKİNLİĞİ (2009 YILI TEMMUZ AYI)

No	Tarih - Date			Zaman - Time			Koordinat - Coordinate			Derinlik - Depth		Magnitüd - Magnitude										
	Gün	Ay	Yıl	Saat	Dak.	San.	Enlem-K	Boylam-D	Ref	Km.	Ref	Ms	Ref	Mb	Ref	Md	Ref	MI	Ref	Mw	Ref	
301	12	7	2009	22	39	10.2	34.82	26.42	R	33	R					3.4	R					
302	12	7	2009	23	32	55.9	37.95	29.39	R	5	R							4.0	R			
303	12	7	2009	23	57	3.1	37.97	29.38	R	10	R					2.6	R					
304	13	7	2009	0	5	19.1	39.32	40.20	R	2	R					2.7	R					
305	13	7	2009	0	33	40.1	37.88	29.31	R	5	R					3.0	R					
306	13	7	2009	1	25	27.7	38.98	41.86	R	10	R					2.8	R					
307	13	7	2009	2	3	37.0	37.78	29.39	R	5	R					2.8	R					
308	13	7	2009	2	9	7.7	38.84	30.58	R	18	R					2.4	R					
309	13	7	2009	2	55	31.6	39.73	26.57	R	5	R					3.3	R	3.4	R			
310	13	7	2009	10	3	45.5	39.11	29.04	R	6	R					3.5	R					
311	13	7	2009	13	2	41.8	39.35	27.93	R	26	R					2.3	R					
312	13	7	2009	14	42	7.6	37.80	42.54	R	5	R					2.7	R					
313	13	7	2009	16	25	2.3	36.81	29.21	R	2	R					2.4	R					
314	13	7	2009	17	16	47.8	40.33	25.77	R	3	R					2.7	R					
315	13	7	2009	17	43	5.6	40.36	25.91	R	5	R					3.0	R					
316	13	7	2009	17	51	38.0	40.33	25.88	R	5	R					3.0	R					
317	13	7	2009	17	53	20.2	40.32	25.88	R	5	R					2.9	R					
318	13	7	2009	17	59	25.5	39.45	32.95	R	5	R					2.5	R					
319	13	7	2009	18	49	27.7	40.87	27.71	R	5	R					2.8	R					
320	13	7	2009	19	46	4.6	40.35	25.93	R	5	R					2.7	R					

TÜRKİYE DEPREM ETKİNLİĞİ (2009 YILI TEMMUZ AYI)

No	Tarih - Date			Zaman - Time			Koordinat - Coordinate			Derinlik - Depth		Magnitüd - Magnitude									
	Gün	Ay	Yıl	Saat	Dak.	San.	Enlem-K	Boylam-D	Ref	Km.	Ref	Ms	Ref	Mb	Ref	Md	Ref	MI	Ref	Mw	Ref
321	13	7	2009	22	30	3.9	39.84	34.10	R	5	R					2.8	R				
322	14	7	2009	1	12	52.5	34.85	32.83	R	20	R					2.3	R				
323	14	7	2009	1	51	13.2	41.17	32.19	R	9	R					2.6	R				
324	14	7	2009	2	37	37.0	37.09	35.59	R	8	R					2.8	R				
325	14	7	2009	4	38	13.9	36.90	29.35	R	7	R					2.7	R				
326	14	7	2009	5	17	12.3	35.73	30.22	R	9	R					3.9	R				
327	14	7	2009	5	34	50.7	37.91	27.62	R	15	R					2.4	R				
328	14	7	2009	6	9	1.8	37.29	28.22	R	2	R					2.5	R				
329	14	7	2009	6	24	6.1	36.98	36.15	R	6	R					2.5	R				
330	14	7	2009	8	59	54.6	37.34	28.26	R	11	R					2.1	R				
331	14	7	2009	9	10	18.0	38.35	27.35	R	7	R					2.6	R				
332	14	7	2009	9	12	43.8	37.47	34.70	R	7	R					2.5	R				
333	14	7	2009	12	8	9.8	38.24	32.28	R	5	R					2.3	R				
334	14	7	2009	13	2	31.9	41.01	36.04	R	5	R					2.6	R				
335	14	7	2009	13	7	49.5	41.05	36.14	R	5	R					2.5	R				
336	14	7	2009	14	21	41.8	38.24	28.79	R	5	R					2.9	R				
337	14	7	2009	15	48	50.0	38.20	38.23	R	8	R					2.5	R				
338	14	7	2009	16	12	18.6	40.70	32.93	R	7	R					2.6	R				
339	14	7	2009	16	42	27.2	38.21	36.42	R	16	R					2.8	R				
340	14	7	2009	18	16	6.3	39.79	38.87	R	2	R					3.2	R				

TÜRKİYE DEPREM ETKİNLİĞİ (2009 YILI TEMMUZ AYI)

No	Tarih - Date			Zaman - Time			Koordinat - Coordinate			Derinlik - Depth		Magnitüd - Magnitude									
	Gün	Ay	Yıl	Saat	Dak.	San.	Enlem-K	Boylam-D	Ref	Km.	Ref	Ms	Ref	Mb	Ref	Md	Ref	MI	Ref	Mw	Ref
341	14	7	2009	18	41	16.0	36.15	36.09	R	19	R					3.1	R				
342	14	7	2009	18	46	9.2	41.31	43.74	R	54	R					2.9	R				
343	14	7	2009	19	16	17.3	40.85	28.50	R	13	R					2.6	R				
344	14	7	2009	20	50	2.4	37.12	43.77	R	5	R					2.9	R				
345	14	7	2009	21	23	31.8	40.43	33.30	R	12	R					2.5	R				
346	14	7	2009	22	23	53.5	37.06	36.12	R	11	R					3.5	R				
347	14	7	2009	22	45	20.9	39.40	26.00	R	7	R					3.4	R				
348	14	7	2009	22	48	12.6	39.39	26.01	R	5	R					3.2	R				
349	14	7	2009	23	6	25.8	40.35	25.89	R	5	R					2.9	R				
350	14	7	2009	23	33	54.9	37.58	26.45	R	5	R					2.9	R				
351	15	7	2009	0	59	51.4	38.69	41.80	R	5	R					3.6	R				
352	15	7	2009	1	22	48.8	40.00	35.87	R	30	R					2.7	R				
353	15	7	2009	2	29	28.4	35.40	28.66	R	33	R					3.7	R				
354	15	7	2009	2	45	56.6	35.39	28.51	N	33	N			4.4	N			4.0	R		
355	15	7	2009	3	48	17.1	39.30	26.11	R	12	R					3.0	R				
356	15	7	2009	4	19	12.8	36.85	29.32	R	5	R					2.9	R				
357	15	7	2009	4	46	57.9	36.43	40.92	R	5	R					3.4	R				
358	15	7	2009	5	7	13.6	35.62	28.51	R	13	R							3.6	R		
359	15	7	2009	6	5	53.7	37.26	28.23	R	5	R					2.6	R				
360	15	7	2009	7	16	7.6	38.90	27.05	R	9	R					3.1	R				

TÜRKİYE DEPREM ETKİNLİĞİ (2009 YILI TEMMUZ AYI)

No	Tarih - Date			Zaman - Time			Koordinat - Coordinate			Derinlik - Depth		Magnitüd - Magnitude									
	Gün	Ay	Yıl	Saat	Dak.	San.	Enlem-K	Boylam-D	Ref	Km.	Ref	Ms	Ref	Mb	Ref	Md	Ref	MI	Ref	Mw	Ref
361	15	7	2009	12	11	49.8	37.22	28.27	R	6	R					2.5	R				
362	15	7	2009	13	48	9.2	39.34	31.96	R	5	R					2.8	R				
363	15	7	2009	14	41	28.1	37.29	28.26	R	7	R					2.6	R				
364	15	7	2009	15	20	22.0	36.29	28.07	R	29	R					2.7	R				
365	15	7	2009	19	38	48.7	39.11	29.05	R	5	R					3.1	R				
366	15	7	2009	23	6	53.8	39.44	41.18	R	9	R					3.0	R				
367	16	7	2009	0	46	8.2	35.17	28.50	R	31	R							3.2	R		
368	16	7	2009	1	41	4.2	38.98	29.00	R	6	R					2.7	R				
369	16	7	2009	2	38	35.6	39.75	39.63	R	14	R					2.8	R				
370	16	7	2009	3	3	7.6	39.29	27.92	R	5	R					3.3	R				
371	16	7	2009	3	38	53.9	36.42	40.90	R	5	R					3.5	R				
372	16	7	2009	4	43	11.4	40.83	31.04	R	5	R					2.9	R				
373	16	7	2009	8	50	45.3	35.45	33.41	R	6	R					2.2	R				
374	16	7	2009	9	13	19.1	39.10	27.55	R	12	R					2.8	R				
375	16	7	2009	9	47	30.3	39.12	29.07	R	5	R					2.7	R				
376	16	7	2009	9	52	30.6	37.15	38.88	R	5	R					3.0	R				
377	16	7	2009	11	16	57.3	39.81	41.36	R	11	R					3.0	R				
378	16	7	2009	11	54	13.8	37.26	28.23	R	4	R					2.3	R				
379	16	7	2009	16	35	18.0	37.55	36.16	R	3	R					3.1	R				
380	16	7	2009	17	49	54.5	39.87	41.33	R	3	R					3.2	R				

TÜRKİYE DEPREM ETKİNLİĞİ (2009 YILI TEMMUZ AYI)

No	Tarih - Date			Zaman - Time			Koordinat - Coordinate			Derinlik - Depth		Magnitüd - Magnitude									
	Gün	Ay	Yıl	Saat	Dak.	San.	Enlem-K	Boylam-D	Ref	Km.	Ref	Ms	Ref	Mb	Ref	Md	Ref	MI	Ref	Mw	Ref
381	16	7	2009	18	52	0.6	39.96	28.16	R	6	R					2.4	R				
382	16	7	2009	19	29	33.5	37.49	38.85	R	17	R					2.8	R				
383	16	7	2009	22	54	55.8	39.31	27.91	R	9	R					2.9	R				
384	16	7	2009	23	18	31.6	37.24	36.36	R	5	R					3.0	R				
385	16	7	2009	23	18	43.4	40.72	30.22	R	7	R					2.8	R				
386	16	7	2009	23	24	25.0	39.95	25.75	R	5	R					3.2	R				
387	16	7	2009	23	45	6.7	37.74	32.05	R	5	R					2.6	R				
388	17	7	2009	1	51	22.6	36.87	27.63	R	8	R					2.5	R				
389	17	7	2009	2	16	12.2	36.88	27.62	R	13	R					2.6	R				
390	17	7	2009	3	20	54.1	36.88	27.61	R	8	R					2.5	R				
391	17	7	2009	6	43	20.6	37.30	28.27	R	7	R					2.5	R				
392	17	7	2009	7	3	41.6	38.98	40.53	R	11	R					2.7	R				
393	17	7	2009	7	44	55.4	35.51	28.58	R	32	R					3.3	R				
394	17	7	2009	8	27	59.1	36.15	28.31	R	48	R					3.2	R				
395	17	7	2009	8	56	13.5	40.44	29.21	R	5	R					2.6	R				
396	17	7	2009	9	31	52.0	38.55	31.58	R	6	R					2.8	R				
397	17	7	2009	9	39	20.5	38.39	38.90	R	8	R					3.0	R				
398	17	7	2009	9	41	6.6	37.03	28.29	R	19	R					2.5	R				
399	17	7	2009	11	23	40.4	36.47	30.45	R	5	R					3.4	R				
400	17	7	2009	11	41	2.2	36.87	27.62	R	15	R					2.5	R				

TÜRKİYE DEPREM ETKİNLİĞİ (2009 YILI TEMMUZ AYI)

No	Tarih - Date			Zaman - Time			Koordinat - Coordinate			Derinlik - Depth		Magnitüd - Magnitude									
	Gün	Ay	Yıl	Saat	Dak.	San.	Enlem-K	Boylam-D	Ref	Km.	Ref	Ms	Ref	Mb	Ref	Md	Ref	MI	Ref	Mw	Ref
401	17	7	2009	12	26	19.6	40.27	28.36	R	5	R					2.7	R				
402	17	7	2009	12	34	1.6	36.11	29.03	R	5	R					2.9	R				
403	17	7	2009	12	39	9.0	39.93	37.44	R	8	R					3.0	R				
404	17	7	2009	13	21	18.9	38.98	35.82	R	17	R					2.9	R				
405	17	7	2009	13	40	52.3	37.96	32.34	R	5	R					2.6	R				
406	17	7	2009	14	24	12.4	38.80	35.71	R	5	R					2.5	R				
407	17	7	2009	16	46	27.7	35.33	30.32	R	32	R							3.0	R		
408	17	7	2009	17	20	3.4	36.96	36.02	R	18	R					2.6	R				
409	17	7	2009	17	27	47.3	37.23	28.39	R	3	R					2.8	R				
410	17	7	2009	17	57	59.9	40.86	27.87	R	25	R					2.4	R				
411	17	7	2009	19	20	5.1	40.31	25.89	R	5	R					3.0	R				
412	17	7	2009	19	28	19.7	40.34	25.88	R	10	R					2.5	R				
413	17	7	2009	20	6	27.3	36.99	28.24	R	13	R					2.5	R				
414	17	7	2009	20	48	43.2	40.85	28.52	R	5	R					2.6	R				
415	17	7	2009	21	13	57.0	40.84	31.31	R	5	R					3.1	R				
416	17	7	2009	21	27	16.5	40.85	28.49	R	8	R					2.6	R				
417	17	7	2009	22	38	44.9	38.68	29.28	R	5	R					2.5	R				
418	17	7	2009	23	11	12.2	41.05	25.92	R	6	R					2.8	R				
419	18	7	2009	0	0	11.3	39.41	33.07	R	5	R					2.7	R				
420	18	7	2009	0	38	11.7	39.73	33.02	R	11	R					2.9	R				

TÜRKİYE DEPREM ETKİNLİĞİ (2009 YILI TEMMUZ AYI)

No	Tarih - Date			Zaman - Time			Koordinat - Coordinate			Derinlik - Depth		Magnitüd - Magnitude									
	Gün	Ay	Yıl	Saat	Dak.	San.	Enlem-K	Boylam-D	Ref	Km.	Ref	Ms	Ref	Mb	Ref	Md	Ref	MI	Ref	Mw	Ref
421	18	7	2009	1	52	56.6	36.96	27.77	R	6	R					2.1	R				
422	18	7	2009	2	27	29.4	40.42	28.32	R	5	R					2.8	R				
423	18	7	2009	4	30	17.9	38.09	30.14	R	19	R					3.1	R				
424	18	7	2009	5	37	22.4	39.83	38.96	R	3	R							3.2	R		
425	18	7	2009	5	38	3.0	39.87	39.03	R	21	R					2.7	R				
426	18	7	2009	5	58	18.6	38.94	42.46	R	5	R					3.3	R				
427	18	7	2009	7	19	18.5	37.23	28.22	R	6	R					2.6	R				
428	18	7	2009	8	49	13.5	38.04	38.06	R	10	R					2.9	R				
429	18	7	2009	9	59	52.4	40.73	29.84	R	6	R							3.6	R		
430	18	7	2009	10	31	41.6	37.37	35.46	R	26	R					2.5	R				
431	18	7	2009	11	18	23.4	40.88	28.52	R	5	R					2.8	R				
432	18	7	2009	11	40	19.2	39.02	42.37	R	8	R					2.9	R				
433	18	7	2009	12	16	38.5	39.21	42.22	R	24	R					3.0	R				
434	18	7	2009	15	5	25.0	38.86	35.05	R	23	R					2.9	R				
435	18	7	2009	15	24	25.2	37.47	34.76	R	5	R					3.2	R				
436	18	7	2009	16	6	9.1	40.32	27.86	R	6	R					2.7	R				
437	18	7	2009	19	41	54.6	39.07	29.08	R	13	R					2.5	R				
438	18	7	2009	20	32	29.9	35.89	43.35	N	25	N			5.3	N			5.3	R		
439	18	7	2009	21	26	45.6	35.86	29.45	R	9	R					3.2	R				
440	18	7	2009	23	14	40.0	39.34	38.31	R	8	R					2.9	R				

TÜRKİYE DEPREM ETKİNLİĞİ (2009 YILI TEMMUZ AYI)

No	Tarih - Date			Zaman - Time			Koordinat - Coordinate			Derinlik - Depth		Magnitüd - Magnitude									
	Gün	Ay	Yıl	Saat	Dak.	San.	Enlem-K	Boylam-D	Ref	Km.	Ref	Ms	Ref	Mb	Ref	Md	Ref	MI	Ref	Mw	Ref
441	18	7	2009	23	54	13.4	39.36	37.86	R	10	R					2.6	R				
442	19	7	2009	0	0	28.0	41.22	43.76	R	21	R					3.0	R				
443	19	7	2009	0	8	20.5	39.09	29.06	R	10	R					2.6	R				
444	19	7	2009	0	36	54.0	39.59	26.02	R	10	R					2.9	R				
445	19	7	2009	0	51	7.7	40.23	32.13	R	5	R					3.2	R				
446	19	7	2009	0	54	52.6	40.25	32.16	R	10	R					2.9	R				
447	19	7	2009	1	11	21.1	37.83	37.01	R	6	R							3.7	R		
448	19	7	2009	1	59	12.6	40.27	32.10	R	3	R					2.9	R				
449	19	7	2009	2	4	26.2	39.44	33.11	R	7	R					3.0	R				
450	19	7	2009	6	31	54.2	36.86	39.02	R	19	R					2.8	R				
451	19	7	2009	6	47	6.2	37.23	28.18	R	6	R					2.5	R				
452	19	7	2009	8	13	27.2	38.83	31.44	R	6	R					2.6	R				
453	19	7	2009	9	8	56.0	40.63	34.79	R	9	R					3.1	R				
454	19	7	2009	11	15	52.6	36.99	28.24	R	17	R					2.4	R				
455	19	7	2009	11	39	6.3	37.22	28.54	R	7	R					2.8	R				
456	19	7	2009	11	59	44.8	36.98	28.21	R	7	R					2.6	R				
457	19	7	2009	13	46	30.2	39.61	32.78	R	18	R					2.7	R				
458	19	7	2009	16	6	19.5	37.87	27.64	R	7	R					2.7	R				
459	19	7	2009	17	47	16.1	36.97	28.23	R	8	R					2.5	R				
460	19	7	2009	17	48	3.1	34.56	31.98	R	32	R					3.4	R				

TÜRKİYE DEPREM ETKİNLİĞİ (2009 YILI TEMMUZ AYI)

No	Tarih - Date			Zaman - Time			Koordinat - Coordinate			Derinlik - Depth		Magnitüd - Magnitude										
	Gün	Ay	Yıl	Saat	Dak.	San.	Enlem-K	Boylam-D	Ref	Km.	Ref	Ms	Ref	Mb	Ref	Md	Ref	MI	Ref	Mw	Ref	
461	19	7	2009	18	7	11.2	38.85	39.30	R	10	R					2.9	R					
462	19	7	2009	18	29	39.6	35.36	28.60	R	32	R							3.6	R			
463	19	7	2009	20	26	19.2	39.10	29.01	R	9	R					2.5	R					
464	19	7	2009	20	54	7.7	36.89	27.77	R	16	R					2.3	R					
465	19	7	2009	20	57	38.1	36.97	28.24	R	16	R					2.4	R					
466	19	7	2009	21	3	30.5	37.78	27.63	R	8	R					2.8	R					
467	19	7	2009	21	26	59.1	40.68	30.30	R	11	R					2.8	R					
468	19	7	2009	23	47	44.1	36.38	40.88	R	5	R					3.2	R					
469	20	7	2009	0	1	6.4	39.22	28.09	R	10	R					2.4	R					
470	20	7	2009	0	57	44.6	37.02	28.24	R	21	R					2.3	R					
471	20	7	2009	1	16	23.4	37.52	35.67	R	13	R					2.4	R					
472	20	7	2009	1	39	33.2	35.62	31.81	R	9	R					3.2	R					
473	20	7	2009	2	43	47.4	35.01	29.19	R	35	R					3.4	R					
474	20	7	2009	7	29	45.8	35.93	43.21	R	4	R							3.5	R			
475	20	7	2009	8	55	1.0	37.23	28.18	R	4	R					2.6	R					
476	20	7	2009	9	49	41.5	36.64	27.83	R	64	R					2.3	R					
477	20	7	2009	14	14	34.3	39.04	27.85	R	10	R					2.7	R					
478	20	7	2009	14	18	48.6	39.46	37.34	R	10	R					3.1	R					
479	20	7	2009	14	24	27.3	37.05	29.89	R	13	R					3.0	R					
480	20	7	2009	14	35	56.4	40.77	34.10	R	14	R					2.7	R					

TÜRKİYE DEPREM ETKİNLİĞİ (2009 YILI TEMMUZ AYI)

No	Tarih - Date			Zaman - Time			Koordinat - Coordinate			Derinlik - Depth		Magnitüd - Magnitude									
	Gün	Ay	Yıl	Saat	Dak.	San.	Enlem-K	Boylam-D	Ref	Km.	Ref	Ms	Ref	Mb	Ref	Md	Ref	MI	Ref	Mw	Ref
481	20	7	2009	14	47	56.3	37.37	28.27	R	2	R					2.7	R				
482	20	7	2009	14	51	38.9	39.64	27.89	R	14	R					2.3	R				
483	20	7	2009	15	0	55.1	37.84	26.65	R	9	R							3.3	R		
484	20	7	2009	15	43	58.0	41.01	36.14	R	6	R					2.6	R				
485	20	7	2009	15	55	17.2	38.70	35.79	R	7	R					2.4	R				
486	20	7	2009	16	1	48.1	39.48	29.77	R	6	R					2.5	R				
487	20	7	2009	16	38	48.0	40.57	35.16	R	8	R					2.6	R				
488	20	7	2009	17	13	4.3	40.56	35.18	R	9	R					2.8	R				
489	20	7	2009	17	47	5.3	37.53	35.65	R	7	R					2.8	R				
490	20	7	2009	20	14	14.3	39.13	25.14	R	12	R					2.9	R				
491	20	7	2009	20	15	26.5	39.15	24.83	R	27	R							3.3	R		
492	20	7	2009	22	35	9.6	43.40	47.78	N	59	N			3.9	N						
493	20	7	2009	23	23	47.9	40.55	33.02	R	5	R					2.6	R				
494	20	7	2009	22	55	25.3	34.23	25.52	N	42	N			4.2	N						
495	21	7	2009	2	26	9.7	40.81	27.59	R	20	R					2.5	R				
496	21	7	2009	2	44	14.1	37.67	36.20	R	5	R					3.3	R				
497	21	7	2009	3	54	0.5	41.88	25.22	R	14	R							3.6	R		
498	21	7	2009	6	24	5.1	36.93	29.24	R	2	R					3.0	R				
499	21	7	2009	7	57	4.4	37.29	28.23	R	7	R					2.6	R				
500	21	7	2009	9	50	10.4	38.96	27.57	R	10	R					3.1	R				

TÜRKİYE DEPREM ETKİNLİĞİ (2009 YILI TEMMUZ AYI)

No	Tarih - Date			Zaman - Time			Koordinat - Coordinate			Derinlik - Depth		Magnitüd - Magnitude									
	Gün	Ay	Yıl	Saat	Dak.	San.	Enlem-K	Boylam-D	Ref	Km.	Ref	Ms	Ref	Mb	Ref	Md	Ref	MI	Ref	Mw	Ref
501	21	7	2009	11	57	2.8	39.03	41.86	R	7	R					3.3	R				
502	21	7	2009	13	52	7.3	35.76	37.62	R	10	R					3.5	R				
503	21	7	2009	16	4	21.2	38.19	36.46	R	10	R					3.1	R				
504	21	7	2009	18	6	43.1	40.88	28.68	R	5	R					2.3	R				
505	21	7	2009	19	1	24.8	40.11	31.66	R	6	R					3.2	R				
506	21	7	2009	19	9	46.8	39.17	28.92	R	6	R					2.4	R				
507	21	7	2009	19	27	8.3	37.12	28.59	R	3	R					2.8	R				
508	21	7	2009	22	21	4.1	35.18	30.47	R	32	R					3.6	R				
509	22	7	2009	0	48	43.1	39.46	26.30	R	11	R							3.4	R		
510	22	7	2009	1	36	41.9	36.47	31.36	R	16	R					3.2	R				
511	22	7	2009	3	54	16.3	40.49	29.16	R	8	R					2.8	R				
512	22	7	2009	7	19	6.8	40.57	29.27	R	11	R					2.5	R				
513	22	7	2009	8	54	34.3	37.28	28.23	R	10	R					2.6	R				
514	22	7	2009	9	20	38.9	39.85	28.79	R	7	R					2.7	R				
515	22	7	2009	10	20	0.7	38.83	31.45	R	6	R					2.6	R				
516	22	7	2009	11	2	48.4	38.22	36.40	R	21	R					2.4	R				
517	22	7	2009	11	12	59.1	40.68	30.13	R	6	R					2.7	R				
518	22	7	2009	11	13	22.1	36.78	28.08	R	31	R					2.3	R				
519	22	7	2009	14	47	46.9	37.24	28.18	R	5	R					2.5	R				
520	22	7	2009	15	37	6.1	39.22	44.09	R	26	R					3.1	R				

TÜRKİYE DEPREM ETKİNLİĞİ (2009 YILI TEMMUZ AYI)

No	Tarih - Date			Zaman - Time			Koordinat - Coordinate			Derinlik - Depth		Magnitüd - Magnitude									
	Gün	Ay	Yıl	Saat	Dak.	San.	Enlem-K	Boylam-D	Ref	Km.	Ref	Ms	Ref	Mb	Ref	Md	Ref	MI	Ref	Mw	Ref
521	22	7	2009	16	11	52.8	38.86	40.81	R	2	R					2.7	R				
522	22	7	2009	16	35	33.7	39.35	39.18	R	4	R					2.6	R				
523	22	7	2009	17	28	19.4	40.04	41.40	R	10	R					3.0	R				
524	22	7	2009	17	40	41.4	36.74	34.20	R	8	R					2.9	R				
525	22	7	2009	17	54	13.7	39.13	29.02	R	6	R					2.5	R				
526	22	7	2009	20	16	28.8	39.10	29.03	R	5	R					3.0	R				
527	23	7	2009	0	4	27.8	40.10	41.49	R	14	R					2.8	R				
528	23	7	2009	2	58	59.0	38.97	27.51	R	7	R					3.0	R				
529	23	7	2009	3	6	29.5	39.51	32.96	R	5	R					3.1	R				
530	23	7	2009	9	14	35.0	36.26	28.25	R	26	R					3.5	R	3.5	R		
531	23	7	2009	9	45	21.7	37.27	28.23	R	16	R					2.5	R				
532	23	7	2009	13	40	10.0	40.47	29.17	R	5	R					2.5	R				
533	23	7	2009	14	25	8.1	40.58	43.02	R	14	R					2.6	R				
534	23	7	2009	15	10	25.8	37.24	28.20	R	7	R					2.5	R				
535	23	7	2009	15	57	30.0	40.97	33.73	R	13	R					2.8	R				
536	23	7	2009	17	6	13.0	39.48	28.20	R	13	R					2.6	R				
537	23	7	2009	18	2	15.4	38.91	39.00	R	5	R					3.0	R				
538	23	7	2009	19	21	36.2	38.94	38.99	R	8	R					2.6	R				
539	23	7	2009	23	13	48.4	36.79	27.86	R	63	R					3.0	R				
540	23	7	2009	23	20	16.9	37.70	35.87	R	14	R					2.6	R				

TÜRKİYE DEPREM ETKİNLİĞİ (2009 YILI TEMMUZ AYI)

No	Tarih - Date			Zaman - Time			Koordinat - Coordinate			Derinlik - Depth		Magnitüd - Magnitude									
	Gün	Ay	Yıl	Saat	Dak.	San.	Enlem-K	Boylam-D	Ref	Km.	Ref	Ms	Ref	Mb	Ref	Md	Ref	MI	Ref	Mw	Ref
541	24	7	2009	0	14	55.8	38.92	38.97	R	5	R					2.8	R				
542	24	7	2009	0	27	26.9	38.75	44.54	R	21	R					3.1	R				
543	24	7	2009	3	30	31.8	39.42	33.10	R	4	R					2.9	R				
544	24	7	2009	3	41	55.4	39.00	27.00	R	10	R					3.0	R				
545	24	7	2009	5	4	13.6	38.81	27.56	R	5	R					2.8	R				
546	24	7	2009	5	48	19.4	37.56	35.69	R	7	R			4.5	N			4.7	R		
547	24	7	2009	6	12	38.4	37.58	35.65	R	9	R					2.7	R				
548	24	7	2009	6	23	41.4	37.59	35.68	R	6	R					3.0	R				
549	24	7	2009	6	55	39.1	37.56	35.65	R	5	R					2.5	R				
550	24	7	2009	7	3	28.9	37.58	35.69	R	8	R					2.9	R				
551	24	7	2009	7	5	5.4	37.55	35.65	R	14	R					2.5	R				
552	24	7	2009	7	15	6.1	37.54	35.67	R	13	R					3.4	R				
553	24	7	2009	8	27	53.8	37.56	35.64	R	3	R					3.4	R				
554	24	7	2009	9	45	38.9	37.55	35.66	R	10	R					2.5	R				
555	24	7	2009	9	52	55.5	38.58	36.42	R	5	R					2.6	R				
556	24	7	2009	10	6	59.0	39.44	32.96	R	5	R					2.5	R				
557	24	7	2009	10	37	24.3	38.76	35.59	R	5	R					3.0	R				
558	24	7	2009	12	20	10.4	36.52	28.69	R	20	R					2.5	R				
559	24	7	2009	20	30	1.4	37.57	35.64	R	11	R					2.6	R				
560	24	7	2009	21	35	14.9	37.55	35.67	R	7	R					2.9	R				

TÜRKİYE DEPREM ETKİNLİĞİ (2009 YILI TEMMUZ AYI)

No	Tarih - Date			Zaman - Time			Koordinat - Coordinate			Derinlik - Depth		Magnitüd - Magnitude										
	Gün	Ay	Yıl	Saat	Dak.	San.	Enlem-K	Boylam-D	Ref	Km.	Ref	Ms	Ref	Mb	Ref	Md	Ref	MI	Ref	Mw	Ref	
561	24	7	2009	21	55	35.7	37.56	35.65	R	9	R					2.7	R					
562	24	7	2009	22	16	48.1	35.83	26.67	R	11	R					3.3	R	3.3	R			
563	25	7	2009	1	46	16.3	35.59	28.52	R	11	R					3.6	R					
564	25	7	2009	3	3	8.9	38.78	32.50	R	8	R					2.9	R					
565	25	7	2009	3	34	34.9	37.54	35.65	R	8	R					2.7	R					
566	25	7	2009	4	15	23.9	38.04	38.08	R	5	R							3.6	R			
567	25	7	2009	4	38	18.6	37.57	35.64	R	10	R					2.6	R					
568	25	7	2009	4	59	47.8	37.58	31.98	R	5	R					3.0	R					
569	25	7	2009	5	56	35.8	37.45	35.71	R	16	R					2.4	R					
570	25	7	2009	7	41	58.0	38.61	44.37	R	5	R					2.9	R					
571	25	7	2009	8	15	34.6	39.52	33.00	R	5	R					2.5	R					
572	25	7	2009	8	49	51.6	37.18	28.15	R	5	R					2.4	R					
573	25	7	2009	8	55	6.3	37.23	28.16	R	5	R					2.4	R					
574	25	7	2009	10	16	2.3	37.54	35.66	R	4	R					2.4	R					
575	25	7	2009	10	16	46.4	39.44	28.12	R	10	R					2.8	R					
576	25	7	2009	12	28	56.1	37.56	35.68	R	9	R					2.7	R					
577	25	7	2009	14	2	54.2	40.69	36.55	R	5	R					2.7	R					
578	25	7	2009	15	16	46.3	39.09	27.66	R	18	R					2.9	R					
579	25	7	2009	16	45	23.8	40.78	26.30	R	17	R					2.6	R					
580	25	7	2009	16	55	45.0	40.72	30.16	R	7	R					2.7	R					

TÜRKİYE DEPREM ETKİNLİĞİ (2009 YILI TEMMUZ AYI)

No	Tarih - Date			Zaman - Time			Koordinat - Coordinate			Derinlik - Depth		Magnitüd - Magnitude									
	Gün	Ay	Yıl	Saat	Dak.	San.	Enlem-K	Boylam-D	Ref	Km.	Ref	Ms	Ref	Mb	Ref	Md	Ref	MI	Ref	Mw	Ref
581	25	7	2009	17	17	28.0	37.52	35.66	R	5	R					2.5	R				
582	25	7	2009	17	39	33.4	40.00	42.42	R	19	R					2.9	R				
583	25	7	2009	20	6	40.6	40.12	43.33	R	5	R					3.7	R	3.8	R		
584	25	7	2009	21	48	59.8	38.88	26.50	R	10	R					2.9	R				
585	26	7	2009	1	0	57.6	39.92	39.99	R	3	R					3.6	R				
586	26	7	2009	1	7	2.4	40.68	27.47	R	10	R					2.6	R				
587	26	7	2009	3	22	41.3	37.92	30.93	R	18	R					2.8	R				
588	26	7	2009	3	37	28.8	35.81	29.65	R	6	R					3.6	R				
589	26	7	2009	3	51	36.1	39.12	29.12	R	4	R					3.3	R				
590	26	7	2009	4	12	19.9	39.09	29.05	R	5	R					3.0	R				
591	26	7	2009	4	45	18.9	39.12	29.10	R	4	R					3.0	R				
592	26	7	2009	6	24	43.2	39.22	24.72	R	26	R							3.7	R		
593	26	7	2009	6	40	55.8	36.91	27.53	R	4	R					2.1	R				
594	26	7	2009	6	57	2.1	36.99	28.29	R	20	R					2.2	R				
595	26	7	2009	8	55	13.4	37.18	28.16	R	8	R					2.5	R				
596	26	7	2009	9	10	9.3	37.09	28.19	R	11	R					2.2	R				
597	26	7	2009	10	38	39.0	35.01	27.49	R	32	R							3.4	R		
598	26	7	2009	16	39	15.4	40.12	40.87	R	9	R					2.8	R				
599	26	7	2009	19	48	25.2	38.96	27.35	R	3	R					2.9	R				
600	26	7	2009	20	41	37.1	37.47	38.94	R	3	R					2.9	R				

TÜRKİYE DEPREM ETKİNLİĞİ (2009 YILI TEMMUZ AYI)

No	Tarih - Date			Zaman - Time			Koordinat - Coordinate			Derinlik - Depth		Magnitüd - Magnitude									
	Gün	Ay	Yıl	Saat	Dak.	San.	Enlem-K	Boylam-D	Ref	Km.	Ref	Ms	Ref	Mb	Ref	Md	Ref	MI	Ref	Mw	Ref
601	26	7	2009	21	11	54.5	38.99	27.66	R	5	R					3.0	R				
602	26	7	2009	21	47	16.4	37.54	35.69	R	7	R					3.3	R				
603	26	7	2009	21	59	57.5	39.27	41.01	R	8	R					2.8	R				
604	26	7	2009	22	52	10.7	38.70	24.74	R	27	R							3.6	R		
605	26	7	2009	23	52	51.1	37.03	28.28	R	19	R					2.4	R				
606	26	7	2009	23	55	30.8	37.65	29.74	R	5	R					3.1	R				
607	27	7	2009	0	50	21.5	41.80	41.80	R	12	R					3.0	R				
608	27	7	2009	1	30	2.0	37.26	28.30	R	7	R					2.6	R				
609	27	7	2009	2	4	36.0	38.14	28.82	R	5	R					2.9	R				
610	27	7	2009	2	7	39.0	39.09	41.75	R	5	R					3.3	R				
611	27	7	2009	2	27	36.3	37.56	35.67	R	16	R					2.5	R				
612	27	7	2009	2	44	13.4	39.64	38.03	R	6	R					2.9	R				
613	27	7	2009	2	56	45.0	39.65	38.00	R	9	R					3.0	R				
614	27	7	2009	4	22	48.2	39.61	37.98	R	5	R					2.9	R				
615	27	7	2009	4	25	47.3	39.65	38.01	R	10	R					2.9	R				
616	27	7	2009	4	48	17.9	39.61	37.96	R	10	R					2.9	R				
617	27	7	2009	6	46	21.5	36.93	27.77	R	5	R					2.6	R				
618	27	7	2009	6	50	40.6	37.65	36.25	R	17	R					3.0	R				
619	27	7	2009	8	26	4.3	37.22	28.17	R	5	R					2.7	R				
620	27	7	2009	8	40	1.7	41.90	25.06	R	9	R							3.7	R		

TÜRKİYE DEPREM ETKİNLİĞİ (2009 YILI TEMMUZ AYI)

No	Tarih - Date			Zaman - Time			Koordinat - Coordinate			Derinlik - Depth		Magnitüd - Magnitude									
	Gün	Ay	Yıl	Saat	Dak.	San.	Enlem-K	Boylam-D	Ref	Km.	Ref	Ms	Ref	Mb	Ref	Md	Ref	MI	Ref	Mw	Ref
621	27	7	2009	12	8	24.7	38.03	34.94	R	5	R					2.7	R				
622	27	7	2009	15	29	56.3	39.04	29.47	R	5	R					2.9	R				
623	27	7	2009	17	53	31.7	36.00	31.68	R	25	R					2.8	R				
624	27	7	2009	23	41	47.4	36.55	28.15	R	68	R					2.7	R				
625	28	7	2009	0	39	0.9	36.97	28.27	R	2	R					2.6	R				
626	28	7	2009	0	58	23.3	40.83	31.47	R	8	R					2.7	R				
627	28	7	2009	1	19	40.4	39.40	33.22	R	5	R					2.4	R				
628	28	7	2009	1	45	14.0	37.57	35.65	R	9	R					2.4	R				
629	28	7	2009	3	16	0.9	37.69	36.19	R	5	R					2.9	R				
630	28	7	2009	7	33	13.4	39.45	33.04	R	2	R					3.4	R	3.5	R		
631	28	7	2009	8	55	39.9	37.24	28.20	R	4	R					2.4	R				
632	28	7	2009	11	53	19.0	39.51	33.51	R	5	R					2.6	R				
633	28	7	2009	11	59	22.7	39.42	33.45	R	2	R					2.5	R				
634	28	7	2009	12	7	0.3	38.44	39.25	R	6	R					2.9	R				
635	28	7	2009	15	17	57.8	36.17	31.07	R	5	R					3.1	R				
636	28	7	2009	16	23	2.0	40.31	27.85	R	5	R					2.7	R				
637	28	7	2009	17	38	48.2	36.08	29.67	R	12	R			4.5	N			4.5	R		
638	28	7	2009	20	28	13.6	40.65	33.50	R	9	R					3.0	R				
639	28	7	2009	22	22	25.4	37.56	35.72	R	16	R					2.7	R				
640	28	7	2009	22	26	35.4	38.98	29.95	R	16	R					2.5	R				

TÜRKİYE DEPREM ETKİNLİĞİ (2009 YILI TEMMUZ AYI)

No	Tarih - Date			Zaman - Time			Koordinat - Coordinate			Derinlik - Depth		Magnitüd - Magnitude									
	Gün	Ay	Yıl	Saat	Dak.	San.	Enlem-K	Boylam-D	Ref	Km.	Ref	Ms	Ref	Mb	Ref	Md	Ref	MI	Ref	Mw	Ref
641	29	7	2009	6	0	21.1	36.04	29.08	R	5	R					2.6	R				
642	29	7	2009	7	1	20.1	37.25	28.22	R	10	R					2.4	R				
643	29	7	2009	7	12	43.6	39.53	25.87	R	9	R					3.1	R				
644	29	7	2009	9	18	22.6	37.26	28.26	R	12	R					2.5	R				
645	29	7	2009	9	52	41.4	37.76	35.07	R	28	R					2.6	R				
646	29	7	2009	10	28	18.5	35.33	33.68	R	17	R					2.3	R				
647	29	7	2009	11	9	45.1	38.10	32.07	R	5	R					2.3	R				
648	29	7	2009	11	57	49.2	37.60	35.68	R	11	R					2.4	R				
649	29	7	2009	12	38	14.1	38.15	32.63	R	17	R					2.4	R				
650	29	7	2009	15	7	18.0	37.30	28.22	R	2	R					2.6	R				
651	29	7	2009	19	27	4.1	37.94	29.16	R	3	R					2.9	R				
652	29	7	2009	20	14	23.1	35.78	29.74	R	5	R					3.3	R				
653	29	7	2009	22	56	46.5	39.84	26.08	R	11	R					2.4	R				
654	30	7	2009	0	41	30.3	37.56	35.67	R	8	R					2.5	R				
655	30	7	2009	1	27	20.1	39.51	26.66	R	5	R					2.8	R				
656	30	7	2009	2	0	15.2	37.36	27.71	R	3	R					2.1	R				
657	30	7	2009	2	20	9.3	38.71	43.36	R	5	R					2.8	R				
658	30	7	2009	3	15	7.9	36.95	28.23	R	6	R					2.0	R				
659	30	7	2009	5	57	12.1	39.35	28.13	R	7	R					2.8	R				
660	30	7	2009	7	37	50.1	39.61	39.76	R	3	R			4.8	N			5.0	R		

TÜRKİYE DEPREM ETKİNLİĞİ (2009 YILI TEMMUZ AYI)

No	Tarih - Date			Zaman - Time			Koordinat - Coordinate			Derinlik - Depth		Magnitüd - Magnitude									
	Gün	Ay	Yıl	Saat	Dak.	San.	Enlem-K	Boylam-D	Ref	Km.	Ref	Ms	Ref	Mb	Ref	Md	Ref	MI	Ref	Mw	Ref
661	30	7	2009	7	39	57.0	39.59	39.81	R	8	R					2.8	R				
662	30	7	2009	7	43	1.1	39.62	39.68	R	5	R					2.8	R				
663	30	7	2009	7	47	33.9	39.66	39.75	R	3	R					2.6	R				
664	30	7	2009	7	50	33.9	39.62	39.78	R	4	R					2.8	R				
665	30	7	2009	7	53	22.1	39.63	39.74	R	4	R					2.9	R				
666	30	7	2009	10	1	52.2	39.57	39.81	R	12	R					2.6	R				
667	30	7	2009	10	3	22.9	39.36	40.77	R	18	R					2.8	R				
668	30	7	2009	10	5	20.5	39.62	39.77	R	4	R					2.8	R				
669	30	7	2009	11	31	4.9	40.24	29.68	R	14	R					2.6	R				
670	30	7	2009	11	58	0.7	36.53	28.19	R	80	R							3.2	R		
671	30	7	2009	13	8	0.2	40.60	28.98	R	14	R					2.7	R				
672	30	7	2009	13	45	10.4	37.27	28.20	R	7	R					2.7	R				
673	30	7	2009	14	5	19.0	40.86	35.93	R	5	R					3.4	R				
674	30	7	2009	15	20	19.8	42.06	25.78	R	5	R					3.0	R				
675	30	7	2009	17	57	7.0	39.64	39.76	R	5	R					2.6	R				
676	30	7	2009	18	10	14.1	39.60	39.78	R	3	R					2.9	R				
677	30	7	2009	19	43	4.9	37.47	38.86	R	5	R					2.7	R				
678	30	7	2009	21	25	9.9	40.84	35.91	R	6	R					3.2	R				
679	30	7	2009	21	41	22.5	39.62	39.74	R	5	R					3.0	R				
680	30	7	2009	22	0	30.6	39.60	39.80	R	3	R					2.5	R				

TÜRKİYE DEPREM ETKİNLİĞİ (2009 YILI TEMMUZ AYI)

No	Tarih - Date			Zaman - Time			Koordinat - Coordinate			Derinlik - Depth		Magnitüd - Magnitude									
	Gün	Ay	Yıl	Saat	Dak.	San.	Enlem-K	Boylam-D	Ref	Km.	Ref	Ms	Ref	Mb	Ref	Md	Ref	MI	Ref	Mw	Ref
681	30	7	2009	22	0	55.8	39.63	39.81	R	5	R					2.9	R				
682	30	7	2009	22	22	30.0	39.63	39.76	R	4	R					2.7	R				
683	30	7	2009	22	26	52.7	39.59	39.76	R	5	R					3.2	R				
684	30	7	2009	23	41	4.8	40.44	28.71	R	5	R					2.8	R				
685	31	7	2009	0	47	38.4	36.13	29.05	R	9	R					3.2	R				
686	31	7	2009	1	16	15.6	39.64	39.74	R	2	R					2.7	R				
687	31	7	2009	1	48	21.9	37.88	27.44	R	9	R					2.9	R				
688	31	7	2009	2	46	16.2	40.62	29.03	R	6	R					2.7	R				
689	31	7	2009	3	7	8.8	37.59	35.71	R	16	R					2.5	R				
690	31	7	2009	7	12	26.4	39.08	29.01	R	4	R					2.9	R				
691	31	7	2009	7	33	28.8	39.11	29.05	R	5	R					2.9	R				
692	31	7	2009	9	54	58.4	39.01	27.43	R	9	R					2.7	R				
693	31	7	2009	13	24	53.0	39.11	29.06	R	5	R					3.3	R				
694	31	7	2009	15	13	55.6	37.31	28.21	R	5	R					2.5	R				
695	31	7	2009	15	17	57.2	40.94	31.59	R	12	R					2.6	R				
696	31	7	2009	15	18	42.5	38.68	25.77	R	5	R					3.4	R				
697	31	7	2009	15	52	0.6	38.15	32.72	R	6	R					2.7	R				
698	31	7	2009	16	4	21.5	40.45	40.75	R	2	R					2.6	R				
699	31	7	2009	16	12	54.7	40.59	30.30	R	8	R					2.6	R				
700	31	7	2009	17	12	32.5	38.85	43.08	R	5	R					2.7	R				

TÜRKİYE DEPREM ETKİNLİĞİ (2009 YILI TEMMUZ AYI)

No	Tarih - Date			Zaman - Time			Koordinat - Coordinate			Derinlik - Depth		Magnitüd - Magnitude									
	Gün	Ay	Yıl	Saat	Dak.	San.	Enlem-K	Boylam-D	Ref	Km.	Ref	Ms	Ref	Mb	Ref	Md	Ref	MI	Ref	Mw	Ref
701	31	7	2009	18	15	5.3	40.64	27.44	R	7	R					2.8	R				
702	31	7	2009	18	40	40.1	39.62	39.77	R	3	R					2.7	R				
703	31	7	2009	18	42	42.3	39.62	39.69	R	4	R					2.6	R				
704	31	7	2009	18	55	42.9	38.51	39.26	R	4	R					2.5	R				
705	31	7	2009	19	12	45.5	37.13	36.06	R	19	R					3.2	R				
706	31	7	2009	19	59	26.6	39.52	26.36	R	17	R					2.8	R				
707	31	7	2009	20	1	30.5	37.15	36.27	R	5	R					2.7	R				
708	31	7	2009	20	13	23.4	37.39	35.75	R	20	R					2.2	R				
709	31	7	2009	20	13	37.0	40.27	41.10	R	10	R					2.4	R				
710	31	7	2009	20	23	55.0	39.62	39.75	R	4	R					2.8	R				
711	31	7	2009	20	25	10.6	37.19	36.25	R	6	R					3.1	R				
712	31	7	2009	21	24	25.1	39.13	29.04	R	5	R					2.7	R				
713	31	7	2009	22	6	39.3	37.94	32.40	R	15	R					2.5	R				
714	31	7	2009	22	28	8.6	39.12	29.47	R	15	R					2.7	R				
715	31	7	2009	23	23	30.0	39.58	39.74	R	5	R					2.6	R				
716	31	7	2009	23	45	12.1	39.64	39.68	R	5	R					2.6	R				