



Kandilli Rasathanesi Ve Deprem Araştırma Enstitüsü

ULUSAL DEPREM İZLEME MERKEZİ



*2009 NİSAN AYI
BÜLTENİ*

*YIL: 6 - SAYI: 64
İSTANBUL*

Hazırlayan ve Katkıda Bulunanlar

D. Kalafat

K. Kekovalı

K. Kılıç

Y. Güneş

M. Yilmazer

Z. Öğütcü

M. Kara

M. Suvarıklı

A. Güngör

A. Küsmezer

F. Kılıçer Bekler

P. Deniz

A. Berberoğlu

M. Çomoğlu

M. Berberoğlu

H. Gümüş

S. Altuncu

D.Kepekçi

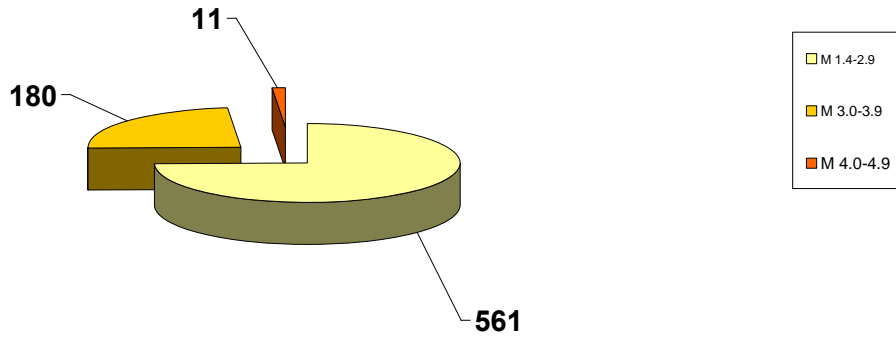
R.Polat

Ö.Çok

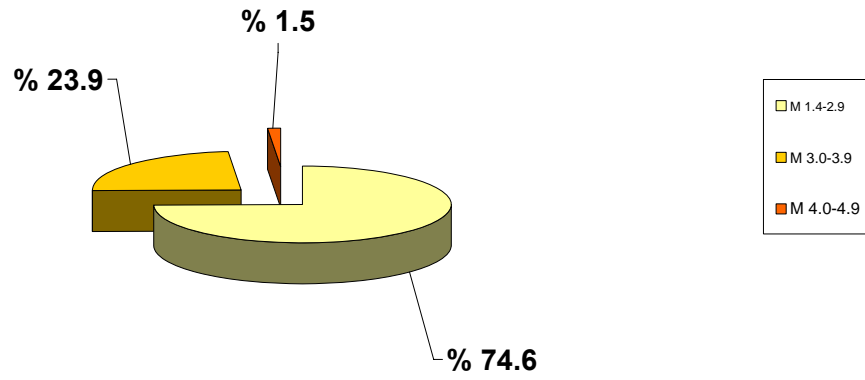
2009 yılı NİSAN ayında meydana gelen depremlerin
istatistiksel dağılımı

MAGNİTÜD ARALIĞI	TOPLAM
1.4-2.9	561
3.0-3.9	180
4.0-4.9	11
5.0-5.9	—
6.0-6.9	—
7.0-	—
TOPLAM	752

2009 NİSAN AYI DEPREMLERİNİN İSTATİSTİKSEL DAĞILIMI
(Toplam: 752 Adet)



2009 NİSAN AYI DEPREMLERİNİN İSTATİSTİKSEL DAĞILIMI (%)



DEĞERLENDİRME

Nisan ayında toplam 752 depremin çözümlü yapılmıştır. Büyüklüğü 4.0 ve üzerinde olan deprem sayısı 11 adettir. Toplam meydana gelen depremlerin % 74.6 oranını büyüklükleri $M=1.4-2.9$ arasındaki depremler oluşturmaktadır.

Toplam 94 adet geniş bantlı (Broad Band) istasyonun Nisan ayı içerisindeki çalışma performansları % 86 dir. İstasyon verimliliklerine baktığımızda, Ağrı (AGRB), Gökçeada (GADA), Hadim (HDMB), Işıklı (IKL), Karaisalı (KARA), Kilyos (KLYT), Şırnak (SIRT; kapalı) ve Sivas (SVSK) bu ay içerisindeki verimsiz istasyonlardır.

Toplam 26 adet kısa periyotlu (SP) istasyonun Nisan ayı içerisindeki çalışma performansları % 92 olup, Eskiya (EYL) istasyonu bu ay içindeki verimsiz istasyondur.

Nisan ayı itibarıyla deprem istasyonlarının ve ***sismik ağın ortalama verimlilik performansı % 87*** olmuştur.

Bu ay içerisinde Van'da bulunan Kısa Periyot deprem istasyonu (VANT) kapatılmıştır. Van'da uydu iletişimli, geniş bantlı deprem istasyonu (VANB) çalışmaktadır. Çok yüksekte, kayalık bir yerde olmasından dolayı birkaç sefer yıldırım düşmesi nedeniyle düzenli çalışmayan ve uzun süredir arızalı olan Dalyan (DALY) istasyonu, yeni yerine taşınarak çalıştırılmıştır. İstasyonun uluslararası kodu DALY olarak değişmiştir.

Nisan ayındaki en önemli depremler 16.04.2009 saat 14:25 (GMT) $M = 4.6$ ve 27.04.2009 saat 20:36'da (GMT) $M = 4.7$ Girit Adası Güneyi-Akdeniz'de meydana gelmiştir. Bunun dışında aynı bölgede büyüklükleri 4.0 ile 4.4 arasında değişen 5 adet daha deprem meydana gelmiştir. 01.04.2009 saat 18:08 $M=4.0$ Çilimli-Düzce, 12.04.2009 saat 17:34'de $M = 4.0$ Çine-Aydın, 15.04.2009 saat 22:21'de Pazaryolu-Erzurum, $M=4.4$ olan orta büyüklükte deprem aktiviteleri meydana gelmiştir.

Ayrıca, Afşar-Bala-Ankara, Kozan-Adana, Balıkesir, Çameli-Honaz-Sarayköy-Akköy-Denizli, Çınarcık-Yalova, Gemlik-Bursa, Tekirdağ Açıkları-Marmara Denizi'nde, Saros Körfezi'nde, Oniki Adalar bölgesinde, Gökova Körfezi-Muğla, Simav-Kütahya'da, Ege Denizi'nin Türkiye kıyıları boyunca meydana gelen deprem etkinlikleri dikkat çekmektedir. Erzurum, Varto-Muş, ve Doğu Anadolu Fay Zonu boyunca, Sivrice-Elazığ, Akçadağ-Doğanşehir-Sürgü-Malatya'da deprem etkinlikleri gözlenmiştir.

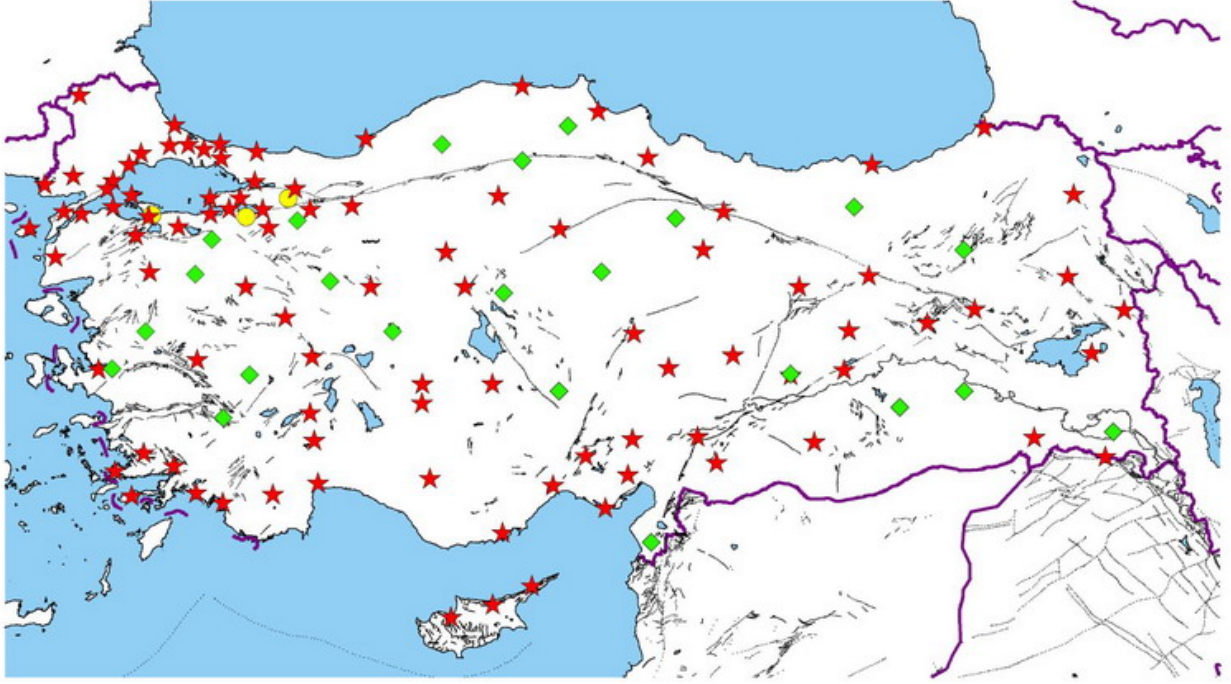
NİSAN 2009

İSTASYON VERİMLİLİK

TABLoları

B.Ü.
KANDİLLİ RASATHANESİ VE DEPREM ARAŞTIRMA ENSTİTÜSÜ
ULUSAL DEPREM İZLEME MERKEZİ
DEPREM İSTASYONLARI

Nisan 2009
Toplam: 120 Adet



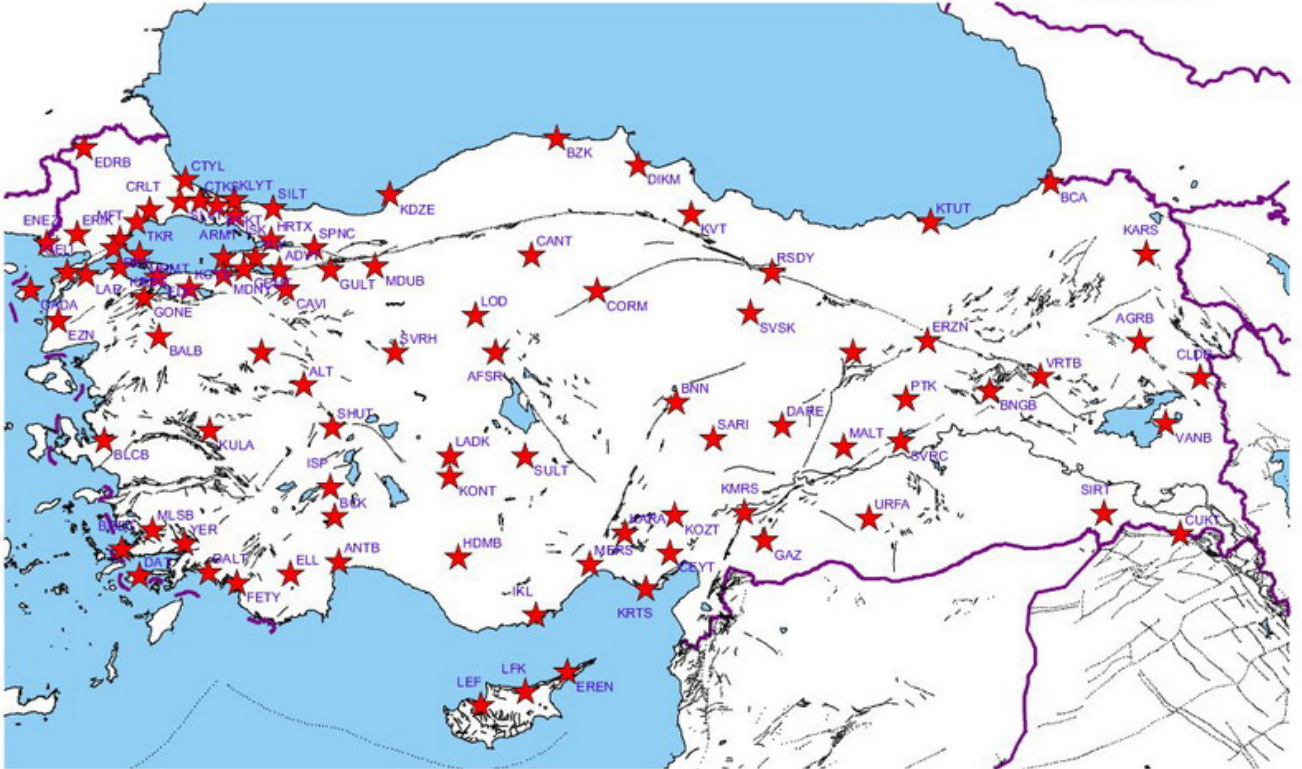
★ GENİŞ BAND

◆ KISA PERİYOT

● TELEMETRİ KISA PERİYOT

BROAD BAND DEPREM İSTASYONLARI

**Nisan 2009
94 Adet**



Adet	Yöntem	Kod	(+)adet	(-)adet	TOPLAM GÜN	(+)%	(-)%	(+)%	(-)%
1	1	ADVT	2	28	30	7	93		
2	2	AFSR	30	0	30	100	0		
3	3	AGRB	6	24	30	20	80		
4	4	ALT	30	0	30	100	0		
5	5	ANTB	30	0	30	100	0		
6	6	ARMT	30	0	30	100	0		
7	7	BALB	30	0	30	100	0		
8	8	BCA	30	0	30	100	0		
9	9	BCK	30	0	30	100	0		
10	10	BGKT	30	0	30	100	0		
11	11	BLCB	30	0	30	100	0		
12	12	BNGB	30	0	30	100	0		
13	13	BNN	30	0	30	100	0		
14	14	BODT	30	0	30	100	0		
15	15	BZK	30	0	30	100	0		
16	16	CANT	30	0	30	100	0		
17	17	CAVI	16	14	30	53	47		
18	18	CEYT	30	0	30	100	0		
19	19	CLDR	30	0	30	100	0		
20	20	CORM	30	0	30	100	0		
21	21	CRLT	30	0	30	100	0		
22	22	CTKS	30	0	30	100	0		
23	23	CTYL	30	0	30	100	0		
24	24	CUKT	22	8	30	73	27		
25	25	DALY	22	8	30	73	27		
26	26	DARE	29	1	30	97	3		
27	27	DAT	22	8	30	73	27		
28	28	DIKM	30	0	30	100	0		
29	29	EDC	30	0	30	100	0		
30	30	EDRB	30	0	30	100	0		
31	31	ELL	30	0	30	100	0		
32	32	ENEZ	29	1	30	97	3		
33	33	EREN	30	0	30	100	0		
34	34	ERIK	7	23	30	23	77		
35	35	ERZN	30	0	30	100	0		
36	36	EZN	30	0	30	100	0		
37	37	FETY	30	0	30	100	0		
38	38	GADA	0	30	30	0	100		
39	39	GAZ	30	0	30	100	0		
40	40	GELI	30	0	30	100	0		
41	41	GEMT	30	0	30	100	0		
42	42	GONE	30	0	30	100	0		
43	43	GULT	30	0	30	100	0		
44	44	HDMB	0	30	30	0	100		
45	45	HRTX	21	9	30	70	30		
46	46	IKL	3	27	30	10	90		
47	47	ILIC	30	0	30	100	0		
48	48	ISK	30	0	30	100	0		
49	49	ISP	30	0	30	100	0		
50	50	KARA	0	30	30	0	100		
51	51	KARS	30	0	30	100	0		
52	52	KCTX	14	16	30	47	53		
53	53	KDZE	29	1	30	97	3		
54	54	KLYT	0	30	30	0	100		
55	55	KMRS	30	0	30	100	0		
56	56	KONT	30	0	30	100	0		
57	57	KOZT	30	0	30	100	0		
58	58	KRBG	26	4	30	87	13		
59	59	KRTS	30	0	30	100	0		
60	60	KTUT	28	2	30	93	7		
61	61	KULA	30	0	30	100	0		
62	62	KVT	30	0	30	100	0		
63	63	LADK	28	2	30	93	7		
64	64	LAP	30	0	30	100	0		
65	65	LEF	30	0	30	100	0		
66	66	LFK	30	0	30	100	0		
67	67	LOD	30	0	30	100	0		
68	68	MALT	30	0	30	100	0		
69	69	MDUB	30	0	30	100	0		
70	70	MDYN	30	0	30	100	0		
71	71	MERS	30	0	30	100	0		
72	72	MFTX	25	5	30	83	17		
73	73	MLSB	30	0	30	100	0		
74	74	MRMT	15	15	30	50	50		
75	75	PTK	18	12	30	60	40		
76	76	RKY	25	5	30	83	17		
77	77	RSDY	30	0	30	100	0		
78	78	SARIZ	30	0	30	100	0		
79	79	SHUT	30	0	30	100	0		
80	80	SILT	30	0	30	100	0		
81	81	SIRT	0	30	30	0	100		
82	82	SPNC	30	0	30	100	0		
83	83	SLVT	30	0	30	100	0		
84	84	SULT	29	1	30	97	3		
85	85	SVRC	29	1	30	97	3		
86	86	SVRH	30	0	30	100	0		
87	87	SVSK	0	30	30	0	100		
88	88	TKR	30	0	30	100	0		
89	89	TVSB	30	0	30	100	0		
90	90	URFA	30	0	30	100	0		
91	91	VANB	28	2	30	93	7		
92	92	VRTB	30	0	30	100	0		
93	93	YER	30	0	30	100	0		
94	94	YLVX	28	2	30	93	7		

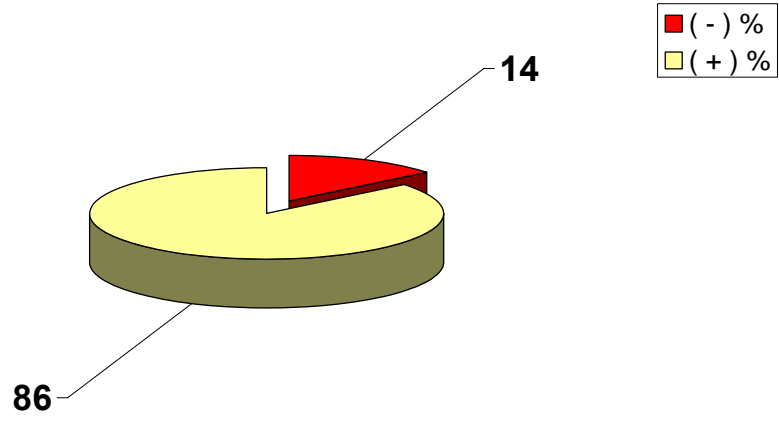
GENİŞ BANTLI (BROAD-BAND) İSTASYONLAR

86

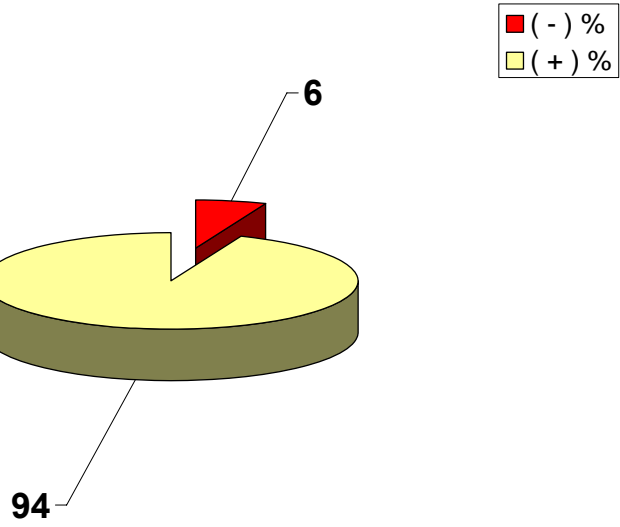
14

95	1	KISA PERİYOT (SHORT PERIOD) İSTASYONLAR	AKS	30	0	30	100	0	92	8
96	2		BNT	30	0	30	100	0		
97	3		BTMT	27	3	30	90	10		
98	4		BYBT	30	0	30	100	0		
99	5		DENT	30	0	30	100	0		
100	6		DIY	30	0	30	100	0		
101	7		DST	30	0	30	100	0		
102	8		ESKT	30	0	30	100	0		
103	9		EYL	3	27	30	10	90		
104	10		EZM	30	0	30	100	0		
105	11		GPA	30	0	30	100	0		
106	12		GUMT	30	0	30	100	0		
107	13		HKR	22	8	30	73	27		
108	14		HTY	25	5	30	83	17		
109	15		IZI	30	0	30	100	0		
110	16		IZM	30	0	30	100	0		
111	17		KAMT	30	0	30	100	0		
112	18		KHL	30	0	30	100	0		
113	19		KIZT	25	5	30	83	17		
114	20		MYA	30	0	30	100	0		
115	21	NIG	30	0	30	100	0			
116	22	ORLT	30	0	30	100	0			
117	23	SAFT	30	0	30	100	0			
118	24	TOKT	19	11	30	63	37			
119	25	TOS	30	0	30	100	0			
120	26	YOZ	30	0	30	100	0			
							+	(-)		
2009 NİSAN ORTALAMA %							87	13		

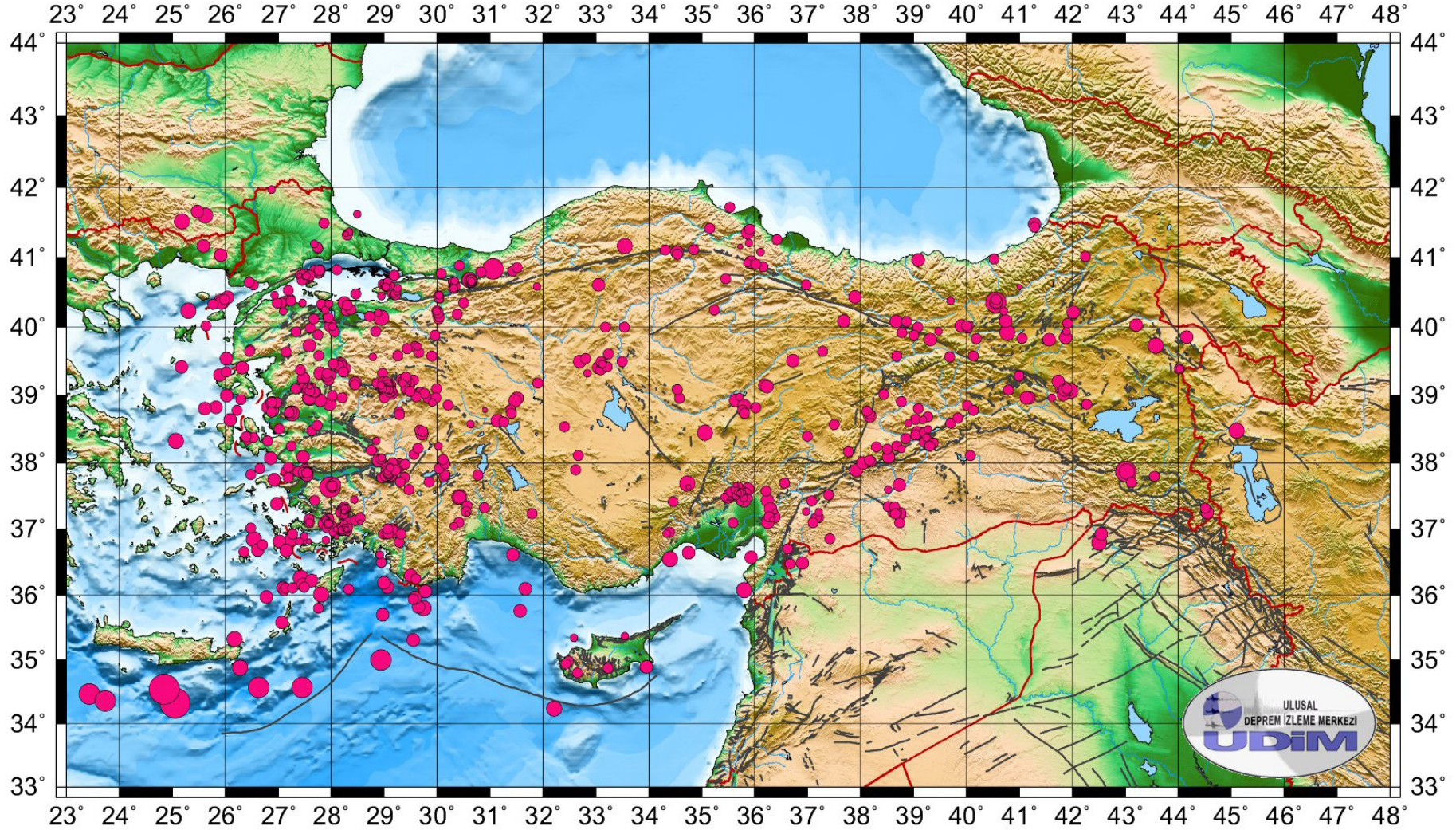
2009 NİSAN AYI BROAD-BAND İSTASYONLARI VERİMLİLİK GRAFİĞİ



2009 NİSAN AYI SHORT PERIOD İSTASYONLARI VERİMLİLİK GRAFİĞİ



TÜRKİYE VE YAKIN ÇEVRESİ DEPREM ETKİNLİĞİ (NİSAN 2009) **Toplam: 752 Adet**



TÜRKİYE DEPREM ETKİNLİĞİ (2009 YILI NİSAN AYI)

No	Tarih - Date			Zaman - Time			Koordinat - Coordinate			Derinlik - Depth		Magnitüd - Magnitude									
	Gün	Ay	Yıl	Saat	Dak.	San.	Enlem-K	Boylam-D	Ref	Km.	Ref	Ms	Ref	Mb	Ref	Md	Ref	MI	Ref	Mw	Ref
1	1	4	2009	2	6	0.1	39.07	28.98	R	7	R					2.9	R				
2	1	4	2009	2	7	33.2	39.06	29.01	R	14	R					2.7	R				
3	1	4	2009	2	43	35.6	38.90	26.97	R	6	R					2.8	R				
4	1	4	2009	5	37	13.0	39.18	31.90	R	25	R					2.6	R				
5	1	4	2009	6	4	28.4	38.09	27.47	R	5	R					3.1	R				
6	1	4	2009	6	18	36.3	37.26	28.17	R	5	R					2.4	R				
7	1	4	2009	6	22	53.7	37.02	26.48	R	31	R					2.5	R				
8	1	4	2009	6	28	42.2	38.64	39.18	R	22	R					2.4	R				
9	1	4	2009	7	30	34.6	37.10	27.92	R	5	R					2.4	R				
10	1	4	2009	8	51	32.2	39.15	28.93	R	15	R					2.6	R				
11	1	4	2009	9	31	52.0	39.11	27.47	R	8	R					2.7	R				
12	1	4	2009	9	55	51.1	39.45	28.15	R	14	R					2.7	R				
13	1	4	2009	10	0	28.4	38.85	40.02	R	5	R					2.6	R				
14	1	4	2009	11	33	7.0	37.16	27.88	R	5	R					2.3	R				
15	1	4	2009	11	36	52.3	38.76	29.28	R	5	R					2.5	R				
16	1	4	2009	11	37	13.7	39.54	32.81	R	3	R					2.7	R				
17	1	4	2009	11	49	59.6	38.90	26.88	R	11	R					2.9	R				
18	1	4	2009	12	3	24.5	39.45	28.14	R	9	R					2.7	R				
19	1	4	2009	13	12	48.6	38.73	38.17	R	9	R					2.8	R				
20	1	4	2009	13	27	12.0	36.96	34.39	R	5	R					2.5	R				

TÜRKİYE DEPREM ETKİNLİĞİ (2009 YILI NİSAN AYI)

No	Tarih - Date			Zaman - Time			Koordinat - Coordinate			Derinlik - Depth		Magnitüd - Magnitude									
	Gün	Ay	Yıl	Saat	Dak.	San.	Enlem-K	Boylam-D	Ref	Km.	Ref	Ms	Ref	Mb	Ref	Md	Ref	MI	Ref	Mw	Ref
21	1	4	2009	13	27	58.1	40.49	29.19	R	5	R					2.4	R				
22	1	4	2009	13	43	58.6	37.13	27.94	R	20	R					2.5	R				
23	1	4	2009	14	1	17.0	38.59	38.90	R	23	R					2.4	R				
24	1	4	2009	14	16	27.7	34.89	33.95	R	32	R					3.1	R	3.1	R		
25	1	4	2009	14	58	4.6	37.31	28.21	R	6	R					2.7	R				
26	1	4	2009	15	20	22.4	35.31	29.55	R	26	R							3.1	R		
27	1	4	2009	18	1	57.0	38.19	28.76	R	8	R					2.8	R				
28	1	4	2009	18	8	47.6	40.84	31.06	R	9	R							4.0	R		
29	1	4	2009	20	58	22.5	39.73	43.57	R	5	R					3.7	R				
30	2	4	2009	1	56	6.9	39.12	29.04	R	8	R					2.9	R				
31	2	4	2009	3	32	48.8	40.37	27.10	R	9	R					2.7	R				
32	2	4	2009	6	49	53.6	40.72	27.44	R	10	R					2.6	R				
33	2	4	2009	8	4	54.6	37.45	28.44	R	9	R					2.4	R				
34	2	4	2009	8	43	2.3	39.08	29.10	R	7	R					2.3	R				
35	2	4	2009	9	33	5.6	36.07	27.11	R	6	R					2.8	R				
36	2	4	2009	10	10	14.0	37.90	27.26	R	5	R					2.8	R				
37	2	4	2009	10	39	2.9	39.45	28.16	R	13	R					2.6	R				
38	2	4	2009	12	22	41.2	37.26	38.68	R	5	R					2.6	R				
39	2	4	2009	12	35	46.8	37.87	27.14	R	11	R					2.8	R				
40	2	4	2009	12	42	59.2	41.44	41.29	R	13	R					2.7	R				

TÜRKİYE DEPREM ETKİNLİĞİ (2009 YILI NİSAN AYI)

No	Tarih - Date			Zaman - Time			Koordinat - Coordinate			Derinlik - Depth		Magnitüd - Magnitude									
	Gün	Ay	Yıl	Saat	Dak.	San.	Enlem-K	Boylam-D	Ref	Km.	Ref	Ms	Ref	Mb	Ref	Md	Ref	MI	Ref	Mw	Ref
41	2	4	2009	12	47	39.1	40.89	30.42	R	6	R					2.8	R				
42	2	4	2009	13	22	7.5	37.42	34.46	R	13	R					2.6	R				
43	2	4	2009	13	29	51.1	37.26	37.21	R	5	R					2.4	R				
44	2	4	2009	14	1	13.2	36.11	27.09	R	6	R							3.4	R		
45	2	4	2009	14	2	19.8	39.93	28.06	R	10	R					2.6	R				
46	2	4	2009	15	36	36.6	40.32	27.86	R	6	R					2.6	R				
47	2	4	2009	16	7	19.0	38.97	28.21	R	8	R					2.8	R				
48	2	4	2009	16	23	33.4	37.51	35.55	R	20	R					2.5	R				
49	2	4	2009	17	36	47.8	37.54	35.65	R	7	R					2.4	R				
50	3	4	2009	4	6	3.7	39.30	28.00	R	9	R					2.8	R				
51	3	4	2009	8	19	33.1	37.32	44.51	R	5	R							2.9	R		
52	3	4	2009	8	58	6.8	39.61	33.24	R	5	R					2.5	R				
53	3	4	2009	8	59	34.0	37.36	30.57	R	5	R					2.6	R				
54	3	4	2009	9	31	21.8	36.98	28.30	R	8	R					2.7	R				
55	3	4	2009	10	15	8.7	39.41	28.14	R	8	R					2.7	R				
56	3	4	2009	10	23	57.5	37.18	37.21	R	2	R					2.5	R				
57	3	4	2009	10	59	48.3	39.38	27.42	R	3	R					2.7	R				
58	3	4	2009	13	6	35.0	37.16	27.96	R	13	R					2.5	R				
59	3	4	2009	13	29	3.7	39.72	29.58	R	4	R					2.5	R				
60	3	4	2009	13	39	44.6	38.78	35.77	R	6	R					2.6	R				

TÜRKİYE DEPREM ETKİNLİĞİ (2009 YILI NİSAN AYI)

No	Tarih - Date			Zaman - Time			Koordinat - Coordinate			Derinlik - Depth		Magnitüd - Magnitude									
	Gün	Ay	Yıl	Saat	Dak.	San.	Enlem-K	Boylam-D	Ref	Km.	Ref	Ms	Ref	Mb	Ref	Md	Ref	MI	Ref	Mw	Ref
61	3	4	2009	13	58	5.1	37.81	29.09	R	5	R					3.0	R				
62	3	4	2009	15	7	10.0	40.12	30.03	R	14	R					2.6	R				
63	3	4	2009	15	46	30.9	38.31	39.20	R	3	R					2.8	R				
64	3	4	2009	16	53	54.6	39.20	29.47	R	5	R					2.7	R				
65	3	4	2009	17	22	6.5	39.83	40.19	R	10	R					2.5	R				
66	3	4	2009	23	58	7.5	39.08	40.79	R	2	R					2.8	R				
67	4	4	2009	0	13	58.6	37.79	30.13	R	2	R					2.7	R				
68	4	4	2009	1	5	1.6	37.05	30.32	R	2	R					2.2	R				
69	4	4	2009	1	21	3.5	37.05	28.01	R	14	R					2.8	R				
70	4	4	2009	2	7	37.4	39.13	29.05	R	10	R					2.5	R				
71	4	4	2009	2	23	23.4	39.18	29.35	R	5	R					2.4	R				
72	4	4	2009	3	33	35.8	39.20	29.01	R	5	R					2.5	R				
73	4	4	2009	4	24	14.9	40.52	29.25	R	2	R					2.2	R				
74	4	4	2009	4	33	49.8	37.26	38.61	R	8	R					2.9	R				
75	4	4	2009	5	29	28.7	37.26	44.55	R	5	R					3.4	R				
76	4	4	2009	6	40	59.3	37.25	28.15	R	5	R					2.4	R				
77	4	4	2009	8	33	33.5	36.94	34.34	R	10	R					2.2	R				
78	4	4	2009	9	58	3.0	37.60	38.52	R	20	R					2.4	R				
79	4	4	2009	10	0	47.9	39.16	29.49	R	5	R					2.6	R				
80	4	4	2009	11	40	55.7	36.10	31.67	R	73	R					3.0	R				

TÜRKİYE DEPREM ETKİNLİĞİ (2009 YILI NİSAN AYI)

No	Tarih - Date			Zaman - Time			Koordinat - Coordinate			Derinlik - Depth		Magnitüd - Magnitude									
	Gün	Ay	Yıl	Saat	Dak.	San.	Enlem-K	Boylam-D	Ref	Km.	Ref	Ms	Ref	Mb	Ref	Md	Ref	MI	Ref	Mw	Ref
81	4	4	2009	13	0	17.5	39.12	29.08	R	5	R					2.9	R				
82	4	4	2009	14	0	30.7	39.88	29.96	R	8	R					2.5	R				
83	4	4	2009	14	43	2.9	39.12	28.93	R	5	R					2.7	R				
84	4	4	2009	15	39	26.0	37.49	35.43	R	13	R					2.3	R				
85	4	4	2009	16	39	47.0	39.49	28.17	R	5	R					2.7	R				
86	4	4	2009	16	56	13.6	40.58	30.32	R	8	R					2.6	R				
87	4	4	2009	19	11	31.9	39.93	27.34	R	4	R					2.6	R				
88	4	4	2009	19	26	32.1	38.97	41.61	R	2	R					2.4	R				
89	4	4	2009	21	51	46.5	37.42	35.73	R	3	R					2.2	R				
90	4	4	2009	22	23	52.6	35.80	29.75	R	2	R					3.6	R				
91	4	4	2009	22	28	44.7	37.44	36.24	R	5	R					3.0	R				
92	4	4	2009	22	51	5.5	39.92	40.77	R	5	R					3.6	R				
93	4	4	2009	23	23	7.3	39.09	29.05	R	14	R					2.3	R				
94	5	4	2009	1	17	12.7	40.65	30.31	R	5	R					2.5	R				
95	5	4	2009	4	27	52.3	34.47	23.43	N	32	N			4.2	N						
96	5	4	2009	5	12	33.6	40.93	35.86	R	6	R					2.3	R				
97	5	4	2009	6	17	39.7	36.77	26.70	R	18	R					2.7	R				
98	5	4	2009	7	1	0.2	37.78	27.19	R	5	R					2.6	R				
99	5	4	2009	7	24	6.6	37.82	30.77	R	7	R					2.5	R				
100	5	4	2009	8	34	56.9	40.38	27.20	R	8	R					2.8	R				

TÜRKİYE DEPREM ETKİNLİĞİ (2009 YILI NİSAN AYI)

No	Tarih - Date			Zaman - Time			Koordinat - Coordinate			Derinlik - Depth		Magnitüd - Magnitude									
	Gün	Ay	Yıl	Saat	Dak.	San.	Enlem-K	Boylam-D	Ref	Km.	Ref	Ms	Ref	Mb	Ref	Md	Ref	MI	Ref	Mw	Ref
101	5	4	2009	9	0	29.3	37.17	37.16	R	8	R					2.9	R				
102	5	4	2009	9	17	3.4	39.44	28.16	R	5	R					2.7	R				
103	5	4	2009	9	20	34.5	37.83	26.48	R	5	R					2.6	R				
104	5	4	2009	9	32	19.7	38.32	39.29	R	5	R					2.6	R				
105	5	4	2009	9	34	12.5	38.40	37.00	R	6	R					2.8	R				
106	5	4	2009	10	2	24.9	39.67	26.47	R	5	R					2.8	R				
107	5	4	2009	10	12	9.4	39.00	26.03	R	12	R					3.1	R				
108	5	4	2009	10	22	51.0	39.23	29.56	R	7	R					2.6	R				
109	5	4	2009	12	22	27.0	41.21	35.89	R	22	R					2.1	R				
110	5	4	2009	12	29	48.4	38.74	35.81	R	5	R					2.7	R				
111	5	4	2009	12	31	22.0	38.77	38.12	R	11	R					2.8	R				
112	5	4	2009	12	36	2.4	39.12	27.62	R	11	R					2.7	R				
113	5	4	2009	12	53	46.1	39.09	27.59	R	5	R					2.6	R				
114	5	4	2009	13	36	5.7	39.06	27.62	R	13	R					2.7	R				
115	5	4	2009	13	36	20.9	37.03	28.18	R	30	R					2.3	R				
116	5	4	2009	13	39	30.3	39.63	29.66	R	6	R					2.5	R				
117	5	4	2009	13	41	6.5	40.75	27.43	R	9	R					2.7	R				
118	5	4	2009	16	5	13.0	39.18	29.48	R	5	R					2.8	R				
119	5	4	2009	21	10	6.1	39.84	41.05	R	14	R					2.6	R				
120	5	4	2009	22	8	59.4	39.65	26.46	R	3	R					2.9	R				

TÜRKİYE DEPREM ETKİNLİĞİ (2009 YILI NİSAN AYI)

No	Tarih - Date			Zaman - Time			Koordinat - Coordinate			Derinlik - Depth		Magnitüd - Magnitude									
	Gün	Ay	Yıl	Saat	Dak.	San.	Enlem-K	Boylam-D	Ref	Km.	Ref	Ms	Ref	Mb	Ref	Md	Ref	MI	Ref	Mw	Ref
121	5	4	2009	22	13	51.1	39.57	39.68	R	8	R					2.6	R				
122	5	4	2009	23	38	29.4	40.87	36.16	R	16	R					2.6	R				
123	6	4	2009	0	2	19.0	39.35	26.02	R	13	R					2.6	R				
124	6	4	2009	2	9	56.1	40.67	30.33	R	5	R					2.4	R				
125	6	4	2009	3	38	50.8	40.75	29.19	R	7	R					2.6	R				
126	6	4	2009	4	55	13.9	37.92	26.65	R	13	R					2.9	R				
127	6	4	2009	5	18	46.0	38.94	26.30	R	5	R					2.9	R				
128	6	4	2009	5	28	29.2	37.49	35.80	R	14	R					2.4	R				
129	6	4	2009	5	43	55.3	39.85	41.87	R	6	R					3.2	R				
130	6	4	2009	5	56	14.3	40.81	31.43	R	8	R					2.8	R				
131	6	4	2009	5	58	10.8	40.06	41.91	R	5	R					2.9	R				
132	6	4	2009	6	15	25.4	39.30	25.90	R	9	R					3.0	R				
133	6	4	2009	7	11	34.5	37.35	38.52	R	12	R					2.7	R				
134	6	4	2009	7	32	34.9	37.82	30.15	R	6	R					2.6	R				
135	6	4	2009	7	40	43.0	37.29	28.21	R	5	R					2.4	R				
136	6	4	2009	8	17	49.5	37.92	30.04	R	11	R					2.5	R				
137	6	4	2009	8	41	47.8	37.95	29.10	R	28	R					2.8	R				
138	6	4	2009	8	48	28.2	37.94	29.11	R	18	R					2.4	R				
139	6	4	2009	8	49	55.6	35.37	33.55	R	5	R					2.2	R				
140	6	4	2009	9	1	4.7	37.88	29.07	R	27	R					2.4	R				

TÜRKİYE DEPREM ETKİNLİĞİ (2009 YILI NİSAN AYI)

No	Tarih - Date			Zaman - Time			Koordinat - Coordinate			Derinlik - Depth		Magnitüd - Magnitude									
	Gün	Ay	Yıl	Saat	Dak.	San.	Enlem-K	Boylam-D	Ref	Km.	Ref	Ms	Ref	Mb	Ref	Md	Ref	MI	Ref	Mw	Ref
141	6	4	2009	9	15	20.0	37.93	29.04	R	3	R					2.9	R				
142	6	4	2009	9	22	46.9	37.93	29.11	R	25	R					2.4	R				
143	6	4	2009	9	31	39.2	39.15	28.97	R	8	R					2.5	R				
144	6	4	2009	9	43	36.4	39.45	28.14	R	8	R					2.6	R				
145	6	4	2009	9	53	27.6	37.88	29.04	R	27	R					2.5	R				
146	6	4	2009	9	57	31.9	36.48	36.67	R	11	R					2.7	R				
147	6	4	2009	11	8	45.2	37.86	29.08	R	5	R					2.8	R				
148	6	4	2009	11	11	20.8	37.90	29.12	R	23	R					2.6	R				
149	6	4	2009	11	14	0.7	37.60	29.47	R	29	R					2.5	R				
150	6	4	2009	11	23	45.8	37.87	27.38	R	3	R					2.8	R				
151	6	4	2009	11	44	33.4	40.23	29.99	R	4	R					2.4	R				
152	6	4	2009	13	44	38.3	37.91	27.50	R	18	R					2.5	R				
153	6	4	2009	14	20	45.6	41.37	28.34	R	18	R					2.4	R				
154	6	4	2009	14	23	46.4	41.33	28.31	R	3	R					2.5	R				
155	6	4	2009	14	47	42.2	39.13	29.08	R	2	R					2.9	R				
156	6	4	2009	15	8	27.6	36.83	27.49	R	15	R					2.4	R				
157	6	4	2009	17	24	8.9	40.14	28.95	R	5	R					3.5	R				
158	6	4	2009	18	55	42.9	37.93	29.15	R	5	R					2.5	R				
159	6	4	2009	20	2	22.5	39.23	29.41	R	9	R					2.7	R				
160	6	4	2009	22	1	4.6	39.24	29.32	R	5	R					2.7	R				

TÜRKİYE DEPREM ETKİNLİĞİ (2009 YILI NİSAN AYI)

No	Tarih - Date			Zaman - Time			Koordinat - Coordinate			Derinlik - Depth		Magnitüd - Magnitude									
	Gün	Ay	Yıl	Saat	Dak.	San.	Enlem-K	Boylam-D	Ref	Km.	Ref	Ms	Ref	Mb	Ref	Md	Ref	MI	Ref	Mw	Ref
161	6	4	2009	22	26	10.6	39.08	29.02	R	4	R					2.8	R				
162	6	4	2009	22	31	10.2	39.11	29.03	R	5	R					2.7	R				
163	6	4	2009	23	19	46.3	39.57	28.79	R	4	R					2.2	R				
164	7	4	2009	0	10	21.5	37.27	30.55	R	22	R					2.7	R				
165	7	4	2009	0	17	59.9	40.59	29.11	R	7	R					2.6	R				
166	7	4	2009	0	37	22.5	40.66	29.06	R	12	R					2.4	R				
167	7	4	2009	1	3	20.2	39.14	29.09	R	5	R					2.7	R				
168	7	4	2009	1	5	27.7	37.87	29.17	R	5	R					3.0	R				
169	7	4	2009	3	41	54.6	40.58	29.03	R	5	R					2.2	R				
170	7	4	2009	4	1	29.8	39.94	39.47	R	10	R					2.4	R				
171	7	4	2009	4	29	12.7	37.61	35.87	R	16	R					3.0	R				
172	7	4	2009	6	0	16.4	37.99	30.15	R	12	R					2.6	R				
173	7	4	2009	6	49	18.8	37.58	36.22	R	8	R					2.7	R				
174	7	4	2009	9	13	19.6	37.22	28.25	R	25	R					2.3	R				
175	7	4	2009	9	50	31.6	40.48	29.16	R	10	R					2.5	R				
176	7	4	2009	10	3	32.2	39.14	29.09	R	5	R					3.3	R				
177	7	4	2009	10	12	11.6	37.95	29.18	R	5	R					2.7	R				
178	7	4	2009	10	44	54.6	39.44	28.16	R	10	R					2.7	R				
179	7	4	2009	11	11	22.2	41.05	34.54	R	12	R					2.6	R				
180	7	4	2009	13	47	1.9	36.89	27.49	R	17	R					2.1	R				

TÜRKİYE DEPREM ETKİNLİĞİ (2009 YILI NİSAN AYI)

No	Tarih - Date			Zaman - Time			Koordinat - Coordinate			Derinlik - Depth		Magnitüd - Magnitude									
	Gün	Ay	Yıl	Saat	Dak.	San.	Enlem-K	Boylam-D	Ref	Km.	Ref	Ms	Ref	Mb	Ref	Md	Ref	MI	Ref	Mw	Ref
181	7	4	2009	14	7	23.0	37.08	28.24	R	22	R					2.4	R				
182	7	4	2009	15	21	35.8	36.66	26.35	R	4	R					2.9	R				
183	7	4	2009	16	3	18.0	40.30	27.84	R	7	R					2.8	R				
184	7	4	2009	16	31	44.5	38.78	40.13	R	4	R					2.8	R				
185	7	4	2009	18	0	58.5	40.94	35.93	R	5	R					3.4	R				
186	7	4	2009	18	26	33.8	36.85	26.54	R	61	R					3.6	R				
187	7	4	2009	20	21	38.5	38.35	26.42	R	9	R					2.9	R				
188	7	4	2009	21	15	54.3	40.38	27.24	R	4	R					2.6	R				
189	7	4	2009	21	19	12.2	36.11	27.14	R	9	R					2.9	R				
190	7	4	2009	23	9	0.7	36.93	28.99	R	14	R					2.7	R				
191	7	4	2009	23	17	52.6	37.82	29.09	R	8	R					2.7	R				
192	7	4	2009	23	30	17.9	37.43	35.80	R	16	R					3.2	R				
193	7	4	2009	23	53	36.8	38.96	34.58	R	7	R					2.8	R				
194	7	4	2009	23	57	34.3	39.09	34.54	R	10	R					2.5	R				
195	8	4	2009	2	42	13.6	37.58	35.71	R	16	R					2.5	R				
196	8	4	2009	8	51	51.8	37.43	37.08	R	8	R					2.9	R				
197	8	4	2009	9	27	3.4	37.28	28.25	R	8	R					2.3	R				
198	8	4	2009	9	49	44.4	41.20	27.68	R	14	R					2.2	R				
199	8	4	2009	11	12	42.8	38.69	39.27	R	7	R					2.7	R				
200	8	4	2009	11	51	48.1	38.86	30.21	R	14	R					2.5	R				

TÜRKİYE DEPREM ETKİNLİĞİ (2009 YILI NİSAN AYI)

No	Tarih - Date			Zaman - Time			Koordinat - Coordinate			Derinlik - Depth		Magnitüd - Magnitude									
	Gün	Ay	Yıl	Saat	Dak.	San.	Enlem-K	Boylam-D	Ref	Km.	Ref	Ms	Ref	Mb	Ref	Md	Ref	MI	Ref	Mw	Ref
201	8	4	2009	12	20	10.0	41.41	35.91	R	6	R					2.7	R				
202	8	4	2009	12	42	50.3	38.83	25.82	R	5	R					3.1	R				
203	8	4	2009	13	8	38.6	37.58	35.76	R	3	R					2.5	R				
204	8	4	2009	13	13	6.2	41.26	36.42	R	6	R					2.7	R				
205	8	4	2009	16	25	31.3	39.29	40.99	R	3	R					2.8	R				
206	8	4	2009	16	29	56.3	37.19	36.27	R	4	R					2.6	R				
207	8	4	2009	18	8	55.6	41.52	25.18	R	5	R					3.6	R				
208	8	4	2009	18	34	31.6	40.61	33.05	R	8	R					3.3	R				
209	8	4	2009	19	36	59.2	41.66	25.47	R	5	R					3.3	R				
210	8	4	2009	20	35	55.3	36.99	29.16	R	10	R					3.0	R				
211	8	4	2009	21	9	8.4	40.23	27.09	R	14	R					2.0	R				
212	8	4	2009	23	17	12.9	37.65	35.70	R	10	R					2.4	R				
213	8	4	2009	23	35	0.3	39.33	28.97	R	5	R					2.7	R				
214	8	4	2009	23	50	20.9	37.75	26.92	R	6	R					3.2	R				
215	8	4	2009	23	55	13.1	38.87	27.97	R	7	R					3.0	R				
216	8	4	2009	23	55	47.8	41.17	33.55	R	4	R					3.6	R				
217	9	4	2009	0	22	25.4	39.14	29.07	R	5	R					2.9	R				
218	9	4	2009	2	21	57.7	38.01	38.24	R	9	R					3.4	R				
219	9	4	2009	2	32	28.8	37.34	38.64	R	8	R					2.7	R				
220	9	4	2009	2	51	8.9	37.89	37.92	R	8	R					3.0	R				

TÜRKİYE DEPREM ETKİNLİĞİ (2009 YILI NİSAN AYI)

No	Tarih - Date			Zaman - Time			Koordinat - Coordinate			Derinlik - Depth		Magnitüd - Magnitude										
	Gün	Ay	Yıl	Saat	Dak.	San.	Enlem-K	Boylam-D	Ref	Km.	Ref	Ms	Ref	Mb	Ref	Md	Ref	MI	Ref	Mw	Ref	
221	9	4	2009	5	38	42.1	36.49	36.90	R	5	R					3.1	R					
222	9	4	2009	6	35	30.4	41.60	25.62	R	3	R					3.8	R	3.7	R			
223	9	4	2009	7	42	52.1	37.33	28.24	R	7	R					2.3	R					
224	9	4	2009	8	13	23.3	36.62	31.43	R	94	R					3.0	R					
225	9	4	2009	12	14	54.4	39.82	39.32	R	18	R					3.1	R					
226	9	4	2009	12	26	19.4	41.48	41.29	R	19	R					3.2	R					
227	9	4	2009	15	33	48.6	40.61	26.53	R	17	R					2.7	R					
228	9	4	2009	17	6	13.3	39.86	44.16	R	10	R					3.3	R					
229	9	4	2009	18	10	28.9	38.97	29.01	R	6	R					2.7	R					
230	9	4	2009	18	54	16.4	40.02	27.99	R	8	R					3.1	R					
231	9	4	2009	20	34	32.4	37.55	35.68	R	10	R					2.6	R					
232	9	4	2009	23	0	20.2	36.12	29.06	R	20	R					3.0	R					
233	10	4	2009	1	34	2.2	37.10	35.59	R	5	R					2.5	R					
234	10	4	2009	2	54	13.2	37.63	35.65	R	8	R					2.3	R					
235	10	4	2009	3	34	38.1	40.68	27.45	R	9	R					2.6	R					
236	10	4	2009	7	44	41.8	37.90	29.15	R	5	R					2.8	R					
237	10	4	2009	8	1	56.8	38.33	28.85	R	3	R					2.4	R					
238	10	4	2009	8	8	21.8	40.24	30.00	R	10	R					2.7	R					
239	10	4	2009	10	49	0.6	36.01	27.81	R	53	R					3.7	R	3.7	R			
240	10	4	2009	11	31	45.0	38.93	35.64	R	5	R					3.4	R					

TÜRKİYE DEPREM ETKİNLİĞİ (2009 YILI NİSAN AYI)

No	Tarih - Date			Zaman - Time			Koordinat - Coordinate			Derinlik - Depth		Magnitüd - Magnitude									
	Gün	Ay	Yıl	Saat	Dak.	San.	Enlem-K	Boylam-D	Ref	Km.	Ref	Ms	Ref	Mb	Ref	Md	Ref	MI	Ref	Mw	Ref
241	10	4	2009	13	52	46.4	41.49	27.87	R	9	R					2.6	R				
242	10	4	2009	14	2	33.9	37.02	28.29	R	18	R					2.6	R				
243	10	4	2009	14	5	2.4	37.03	28.33	R	19	R					2.4	R				
244	10	4	2009	14	7	43.6	40.41	30.05	R	14	R					2.4	R				
245	10	4	2009	14	35	51.3	40.91	36.02	R	14	R					2.8	R				
246	10	4	2009	15	9	58.5	37.13	27.89	R	5	R					2.5	R				
247	10	4	2009	15	30	22.4	38.64	26.09	R	3	R					3.2	R				
248	10	4	2009	15	40	32.5	35.00	28.94	R	16	R			4.4	N	3.8	R	4.0	R		
249	10	4	2009	19	6	6.8	39.64	27.15	R	11	R					2.7	R				
250	10	4	2009	20	8	55.4	39.73	27.59	R	5	R					3.4	R				
251	10	4	2009	23	2	56.3	36.19	29.00	R	17	R					3.2	R				
252	11	4	2009	0	34	2.4	35.70	28.97	R	44	R					3.4	R				
253	11	4	2009	0	42	38.9	41.02	42.25	R	12	R					2.8	R				
254	11	4	2009	4	43	7.8	37.11	30.41	R	13	R					2.7	R				
255	11	4	2009	7	2	19.4	37.31	28.27	R	8	R					2.7	R				
256	11	4	2009	8	57	18.1	40.35	40.55	R	9	R					3.1	R				
257	11	4	2009	11	45	58.9	38.96	29.83	R	9	R					2.5	R				
258	11	4	2009	11	53	57.4	34.57	26.63	N	10	N			4.3	N						
259	11	4	2009	12	0	14.7	37.08	27.95	R	18	R					2.5	R				
260	11	4	2009	13	22	5.8	37.10	27.93	R	5	R					2.6	R				

TÜRKİYE DEPREM ETKİNLİĞİ (2009 YILI NİSAN AYI)

No	Tarih - Date			Zaman - Time			Koordinat - Coordinate			Derinlik - Depth		Magnitüd - Magnitude										
	Gün	Ay	Yıl	Saat	Dak.	San.	Enlem-K	Boylam-D	Ref	Km.	Ref	Ms	Ref	Mb	Ref	Md	Ref	MI	Ref	Mw	Ref	
261	11	4	2009	20	17	2.5	37.94	27.19	R	21	R					2.7	R					
262	11	4	2009	20	30	55.2	37.52	37.40	R	9	R					2.6	R					
263	11	4	2009	21	16	3.8	39.33	27.79	R	6	R					3.3	R					
264	11	4	2009	23	24	6.8	40.02	40.04	R	5	R					2.7	R					
265	12	4	2009	4	16	3.9	38.54	32.41	R	19	R					2.6	R					
266	12	4	2009	5	8	11.0	37.28	28.18	R	3	R					2.6	R					
267	12	4	2009	5	15	0.1	38.87	42.27	R	12	R					2.9	R					
268	12	4	2009	6	2	18.0	37.02	28.26	R	21	R					2.2	R					
269	12	4	2009	8	53	0.1	37.26	28.20	R	7	R					2.6	R					
270	12	4	2009	11	10	16.9	38.97	41.18	R	9	R					3.0	R					
271	12	4	2009	12	25	13.8	36.98	28.21	R	14	R					2.9	R					
272	12	4	2009	14	3	38.4	39.59	29.26	R	9	R					2.5	R					
273	12	4	2009	14	13	34.6	40.46	30.04	R	6	R					2.4	R					
274	12	4	2009	14	57	38.0	38.48	27.63	R	5	R					2.8	R					
275	12	4	2009	17	6	1.3	37.66	28.02	R	2	R					3.3	R					
276	12	4	2009	17	9	41.7	39.12	41.84	R	9	R					3.4	R					
277	12	4	2009	17	34	23.8	37.66	28.02	R	6	R					2.5	R					
278	12	4	2009	17	34	56.4	37.64	27.98	R	24	R							4.0	R			
279	12	4	2009	18	17	10.3	40.09	40.74	R	6	R					3.0	R					
280	12	4	2009	21	15	34.5	38.51	27.02	R	4	R					2.9	R					

TÜRKİYE DEPREM ETKİNLİĞİ (2009 YILI NİSAN AYI)

No	Tarih - Date			Zaman - Time			Koordinat - Coordinate			Derinlik - Depth		Magnitüd - Magnitude									
	Gün	Ay	Yıl	Saat	Dak.	San.	Enlem-K	Boylam-D	Ref	Km.	Ref	Ms	Ref	Mb	Ref	Md	Ref	MI	Ref	Mw	Ref
281	12	4	2009	22	20	37.4	37.56	35.65	R	8	R					3.1	R				
282	12	4	2009	23	31	54.0	37.09	27.85	R	15	R					2.6	R				
283	13	4	2009	1	22	2.3	37.11	28.32	R	23	R					2.5	R				
284	13	4	2009	1	33	20.1	39.15	36.19	R	5	R					3.2	R				
285	13	4	2009	1	51	24.7	37.52	35.83	R	6	R					2.7	R				
286	13	4	2009	1	53	41.9	39.13	36.23	R	3	R					3.0	R				
287	13	4	2009	2	27	47.8	40.82	27.69	R	20	R					2.6	R				
288	13	4	2009	4	19	2.0	40.35	27.06	R	5	R					2.6	R				
289	13	4	2009	5	58	8.3	39.14	29.06	R	5	R					3.3	R				
290	13	4	2009	9	28	59.6	40.21	28.88	R	14	R					2.3	R				
291	13	4	2009	11	30	19.3	37.67	38.73	R	5	R					3.1	R				
292	13	4	2009	13	4	31.6	35.58	27.07	R	8	R					3.0	R				
293	13	4	2009	13	42	30.8	40.01	28.02	R	12	R					2.4	R				
294	13	4	2009	15	4	9.5	39.44	28.17	R	14	R					2.5	R				
295	13	4	2009	15	18	19.1	39.58	40.13	R	8	R					2.6	R				
296	13	4	2009	17	48	42.8	39.10	41.90	R	7	R					2.9	R				
297	13	4	2009	20	37	33.6	37.27	36.97	R	5	R					2.3	R				
298	13	4	2009	22	59	37.8	38.25	30.02	R	17	R					2.3	R				
299	14	4	2009	0	42	7.9	39.33	32.84	R	12	R					2.2	R				
300	14	4	2009	1	56	54.0	40.35	28.25	R	8	R					3.2	R				

TÜRKİYE DEPREM ETKİNLİĞİ (2009 YILI NİSAN AYI)

No	Tarih - Date			Zaman - Time			Koordinat - Coordinate			Derinlik - Depth		Magnitüd - Magnitude									
	Gün	Ay	Yıl	Saat	Dak.	San.	Enlem-K	Boylam-D	Ref	Km.	Ref	Ms	Ref	Mb	Ref	Md	Ref	MI	Ref	Mw	Ref
301	14	4	2009	2	3	7.8	40.56	29.26	R	12	R					2.3	R				
302	14	4	2009	2	8	49.0	40.24	28.29	R	21	R					2.6	R				
303	14	4	2009	6	14	19.7	34.36	23.73	N	54	N			4.4	N						
304	14	4	2009	6	25	25.1	36.65	34.75	R	10	R					3.3	R				
305	14	4	2009	8	36	43.2	40.48	28.47	R	9	R					2.7	R				
306	14	4	2009	9	14	6.3	37.19	36.36	R	8	R					3.1	R				
307	14	4	2009	13	25	14.1	38.96	31.51	R	5	R					3.2	R				
308	14	4	2009	13	45	3.7	40.86	31.51	R	5	R					2.7	R				
309	14	4	2009	13	53	28.1	40.26	28.37	R	5	R					2.7	R				
310	14	4	2009	14	46	24.5	37.58	35.69	R	6	R					2.6	R				
311	14	4	2009	14	47	21.7	40.02	25.64	R	10	R					2.8	R				
312	14	4	2009	15	51	20.2	37.13	27.90	R	5	R					2.0	R				
313	14	4	2009	16	9	56.8	40.25	27.89	R	7	R					2.4	R				
314	14	4	2009	16	22	23.9	36.95	28.05	R	19	R					2.2	R				
315	14	4	2009	17	52	15.5	40.00	39.08	R	9	R					2.7	R				
316	14	4	2009	18	2	29.0	36.84	27.90	R	32	R					2.3	R				
317	14	4	2009	18	33	23.6	39.20	29.42	R	7	R					2.8	R				
318	14	4	2009	22	46	6.4	40.00	33.18	R	22	R					2.6	R				
319	14	4	2009	22	56	26.0	39.99	27.61	R	9	R					2.8	R				
320	14	4	2009	23	19	45.8	39.05	29.67	R	12	R					2.8	R				

TÜRKİYE DEPREM ETKİNLİĞİ (2009 YILI NİSAN AYI)

No	Tarih - Date			Zaman - Time			Koordinat - Coordinate			Derinlik - Depth		Magnitüd - Magnitude									
	Gün	Ay	Yıl	Saat	Dak.	San.	Enlem-K	Boylam-D	Ref	Km.	Ref	Ms	Ref	Mb	Ref	Md	Ref	MI	Ref	Mw	Ref
321	14	4	2009	23	26	25.6	39.65	37.28	R	14	R					2.7	R				
322	14	4	2009	23	35	47.7	37.47	35.70	R	12	R					2.6	R				
323	15	4	2009	0	17	9.7	39.00	28.02	R	5	R					2.8	R				
324	15	4	2009	0	37	46.2	39.13	28.95	R	21	R					2.8	R				
325	15	4	2009	0	38	28.1	37.24	30.58	R	5	R							1.6	R		
326	15	4	2009	1	36	12.3	38.02	38.20	R	6	R					2.5	R				
327	15	4	2009	1	37	31.3	37.68	28.06	R	17	R					3.0	R				
328	15	4	2009	3	28	5.6	35.94	29.55	R	15	R					2.9	R				
329	15	4	2009	3	52	8.9	35.82	29.65	R	14	R					3.1	R				
330	15	4	2009	7	37	25.3	34.24	32.21	R	68	R							3.7	R		
331	15	4	2009	9	27	12.4	36.62	28.92	R	5	R							2.3	R		
332	15	4	2009	9	39	54.4	36.89	28.10	R	20	R							1.9	R		
333	15	4	2009	9	53	34.4	36.96	28.03	R	18	R							2.2	R		
334	15	4	2009	10	36	18.5	36.50	28.95	R	3	R							2.5	R		
335	15	4	2009	12	3	33.1	40.40	40.56	R	8	R							2.8	R		
336	15	4	2009	12	54	43.6	40.97	39.09	R	7	R					3.1	R				
337	15	4	2009	13	14	19.4	40.23	40.71	R	7	R							2.2	R		
338	15	4	2009	14	27	49.9	38.57	37.50	R	5	R					2.9	R				
339	15	4	2009	15	3	48.3	38.49	29.67	R	8	R					2.6	R				
340	15	4	2009	15	35	36.7	37.64	34.75	R	8	R							1.8	R		

TÜRKİYE DEPREM ETKİNLİĞİ (2009 YILI NİSAN AYI)

No	Tarih - Date			Zaman - Time			Koordinat - Coordinate			Derinlik - Depth		Magnitüd - Magnitude									
	Gün	Ay	Yıl	Saat	Dak.	San.	Enlem-K	Boylam-D	Ref	Km.	Ref	Ms	Ref	Mb	Ref	Md	Ref	MI	Ref	Mw	Ref
341	15	4	2009	16	7	58.7	39.23	27.95	R	10	R					2.9	R				
342	15	4	2009	17	59	8.1	37.24	31.80	R	11	R					2.9	R				
343	15	4	2009	18	53	24.2	40.80	27.46	R	11	R							1.6	R		
344	15	4	2009	22	6	35.2	38.30	39.37	R	11	R					2.7	R				
345	15	4	2009	22	21	37.0	40.36	40.55	R	7	R			4.4	N			4.2	R		
346	15	4	2009	22	33	7.8	40.37	40.56	R	12	R					3.1	R				
347	15	4	2009	23	22	45.2	38.98	35.71	R	5	R							2.1	R		
348	15	4	2009	23	25	46.5	37.85	27.54	R	5	R					2.9	R				
349	16	4	2009	1	1	50.6	37.01	28.25	R	20	R							1.9	R		
350	16	4	2009	1	28	27.0	38.25	27.25	R	6	R					2.5	R				
351	16	4	2009	1	43	54.2	39.07	41.89	R	19	R					3.1	R				
352	16	4	2009	2	26	31.7	40.74	27.40	R	10	R							1.6	R		
353	16	4	2009	4	42	43.6	39.02	41.83	R	5	R					3.3	R				
354	16	4	2009	5	36	44.7	37.49	35.83	R	12	R							2.4	R		
355	16	4	2009	6	30	35.6	37.51	35.65	R	5	R							2.0	R		
356	16	4	2009	7	4	48.3	36.95	29.17	R	5	R					2.9	R				
357	16	4	2009	9	4	20.7	38.25	38.68	R	20	R					2.6	R				
358	16	4	2009	10	45	49.0	37.67	35.64	R	22	R							1.8	R		
359	16	4	2009	11	4	13.4	38.47	29.73	R	17	R					2.9	R				
360	16	4	2009	11	18	16.9	39.69	29.44	R	7	R					2.7	R				

TÜRKİYE DEPREM ETKİNLİĞİ (2009 YILI NİSAN AYI)

No	Tarih - Date			Zaman - Time			Koordinat - Coordinate			Derinlik - Depth		Magnitüd - Magnitude										
	Gün	Ay	Yıl	Saat	Dak.	San.	Enlem-K	Boylam-D	Ref	Km.	Ref	Ms	Ref	Mb	Ref	Md	Ref	MI	Ref	Mw	Ref	
361	16	4	2009	11	36	11.6	40.32	28.31	R	4	R					2.5	R					
362	16	4	2009	11	39	38.3	39.48	28.20	R	20	R					2.7	R					
363	16	4	2009	12	14	1.3	40.02	39.90	R	9	R					3.0	R					
364	16	4	2009	12	28	54.2	41.97	26.87	R	9	R							2.3	R			
365	16	4	2009	12	57	3.4	36.08	35.80	R	19	R							3.5	R			
366	16	4	2009	13	29	47.7	39.46	33.12	R	6	R							2.0	R			
367	16	4	2009	13	40	56.6	41.34	28.28	R	13	R							1.8	R			
368	16	4	2009	14	25	32.2	34.33	25.05	N	36	N			4.6	N							
369	16	4	2009	14	49	44.4	37.24	38.74	R	2	R					3.1	R					
370	16	4	2009	15	56	46.3	37.58	35.66	R	12	R							2.6	R			
371	16	4	2009	16	4	20.4	40.56	30.32	R	6	R							2.3	R			
372	16	4	2009	16	17	54.7	37.88	27.50	R	5	R					3.0	R					
373	16	4	2009	16	29	26.9	37.47	35.88	R	16	R							2.2	R			
374	16	4	2009	16	51	43.5	37.60	29.47	R	22	R					2.8	R					
375	16	4	2009	17	38	48.7	37.81	29.09	R	6	R					2.7	R					
376	16	4	2009	18	7	21.0	37.80	29.12	R	16	R					2.7	R					
377	16	4	2009	18	53	52.8	40.33	25.77	R	12	R					2.7	R					
378	16	4	2009	18	57	14.3	37.79	29.15	R	24	R					2.7	R					
379	16	4	2009	19	19	26.6	37.83	29.09	R	7	R					2.9	R					
380	16	4	2009	19	30	19.0	37.82	29.09	R	14	R					2.7	R					

TÜRKİYE DEPREM ETKİNLİĞİ (2009 YILI NİSAN AYI)

No	Tarih - Date			Zaman - Time			Koordinat - Coordinate			Derinlik - Depth		Magnitüd - Magnitude									
	Gün	Ay	Yıl	Saat	Dak.	San.	Enlem-K	Boylam-D	Ref	Km.	Ref	Ms	Ref	Mb	Ref	Md	Ref	MI	Ref	Mw	Ref
381	16	4	2009	20	24	2.6	37.81	29.09	R	18	R					2.7	R				
382	16	4	2009	20	38	35.6	37.84	29.08	R	6	R					2.8	R				
383	16	4	2009	20	51	36.3	37.79	29.12	R	18	R					2.8	R				
384	16	4	2009	21	1	53.4	38.37	38.85	R	10	R					2.5	R				
385	16	4	2009	21	54	50.4	37.83	29.12	R	16	R					2.7	R				
386	16	4	2009	21	57	4.6	40.80	27.76	R	9	R					3.0	R				
387	16	4	2009	22	8	37.8	37.78	28.96	R	13	R					2.8	R				
388	16	4	2009	22	13	22.2	37.83	29.10	R	18	R					2.8	R				
389	16	4	2009	22	21	56.9	37.84	29.11	R	5	R					2.9	R				
390	17	4	2009	1	19	11.2	37.56	35.66	R	8	R							1.7	R		
391	17	4	2009	1	41	21.5	36.06	29.78	R	8	R					3.0	R				
392	17	4	2009	2	43	12.7	36.81	29.28	R	18	R					2.8	R				
393	17	4	2009	3	19	36.2	38.93	27.79	R	8	R					3.0	R				
394	17	4	2009	4	7	9.4	40.80	27.76	R	6	R					2.6	R				
395	17	4	2009	4	21	23.3	37.39	26.97	R	9	R					3.0	R				
396	17	4	2009	4	34	41.6	39.28	27.92	R	8	R					2.8	R				
397	17	4	2009	4	53	40.6	39.94	41.89	R	10	R							2.1	R		
398	17	4	2009	6	48	22.1	37.81	29.10	R	17	R					2.8	R				
399	17	4	2009	9	18	10.1	38.45	35.06	R	5	R							3.7	R		
400	17	4	2009	12	42	16.6	37.24	38.66	R	7	R					2.8	R				

TÜRKİYE DEPREM ETKİNLİĞİ (2009 YILI NİSAN AYI)

No	Tarih - Date			Zaman - Time			Koordinat - Coordinate			Derinlik - Depth		Magnitüd - Magnitude									
	Gün	Ay	Yıl	Saat	Dak.	San.	Enlem-K	Boylam-D	Ref	Km.	Ref	Ms	Ref	Mb	Ref	Md	Ref	MI	Ref	Mw	Ref
401	17	4	2009	13	1	46.8	37.82	29.08	R	14	R					3.0	R				
402	17	4	2009	13	6	8.9	37.85	29.08	R	5	R					2.8	R				
403	17	4	2009	13	29	38.0	37.84	29.18	R	6	R					2.9	R				
404	17	4	2009	13	32	34.3	37.81	29.02	R	18	R					2.9	R				
405	17	4	2009	13	55	0.9	37.84	29.08	R	6	R					2.8	R				
406	17	4	2009	14	17	5.2	37.81	29.14	R	5	R					2.9	R				
407	17	4	2009	14	23	38.1	37.85	29.07	R	6	R					3.0	R				
408	17	4	2009	15	14	30.2	37.82	29.09	R	10	R					2.7	R				
409	17	4	2009	15	23	7.5	40.58	30.32	R	6	R					2.7	R				
410	17	4	2009	15	57	0.3	37.56	35.69	R	8	R							2.1	R		
411	17	4	2009	16	50	33.8	37.55	35.70	R	16	R							1.9	R		
412	17	4	2009	17	49	59.9	37.69	34.73	R	5	R					3.5	R				
413	17	4	2009	17	55	39.1	37.85	29.11	R	8	R					2.8	R				
414	17	4	2009	18	1	23.9	40.80	27.77	R	11	R					2.8	R				
415	17	4	2009	18	29	31.7	39.42	25.17	R	20	R					3.0	R				
416	17	4	2009	18	39	32.3	40.62	28.98	R	5	R					2.9	R				
417	17	4	2009	22	19	8.4	37.78	29.39	R	2	R					2.7	R				
418	18	4	2009	1	16	19.2	38.38	26.53	R	5	R					2.9	R				
419	18	4	2009	2	41	21.1	39.08	29.06	R	8	R					2.8	R				
420	18	4	2009	2	51	35.8	37.00	28.29	R	19	R							1.5	R		

TÜRKİYE DEPREM ETKİNLİĞİ (2009 YILI NİSAN AYI)

No	Tarih - Date			Zaman - Time			Koordinat - Coordinate			Derinlik - Depth		Magnitüd - Magnitude									
	Gün	Ay	Yıl	Saat	Dak.	San.	Enlem-K	Boylam-D	Ref	Km.	Ref	Ms	Ref	Mb	Ref	Md	Ref	MI	Ref	Mw	Ref
421	18	4	2009	2	54	27.6	39.38	33.09	R	2	R					2.6	R				
422	18	4	2009	3	14	48.5	37.31	36.30	R	7	R					3.4	R				
423	18	4	2009	3	19	9.5	36.99	29.16	R	5	R					2.9	R				
424	18	4	2009	3	29	44.9	39.04	29.14	R	10	R					3.0	R				
425	18	4	2009	3	41	53.1	40.24	25.30	R	10	R							3.6	R		
426	18	4	2009	4	6	52.9	39.05	29.10	R	7	R					2.9	R				
427	18	4	2009	8	23	6.7	37.32	28.29	R	10	R							2.0	R		
428	18	4	2009	8	39	11.0	37.48	35.79	R	16	R							2.4	R		
429	18	4	2009	12	26	4.6	37.07	27.93	R	5	R							2.2	R		
430	18	4	2009	13	29	25.0	40.19	30.01	R	12	R					2.5	R				
431	18	4	2009	13	30	44.1	40.19	30.01	R	7	R					2.7	R				
432	18	4	2009	13	33	1.1	39.13	27.59	R	8	R							1.9	R		
433	18	4	2009	13	51	12.2	39.39	44.02	R	5	R							2.5	R		
434	18	4	2009	16	0	25.0	40.33	27.82	R	7	R					2.7	R				
435	18	4	2009	18	20	40.0	38.42	39.04	R	7	R					2.8	R				
436	18	4	2009	19	17	47.4	36.93	29.05	R	20	R					2.7	R				
437	18	4	2009	19	55	43.8	38.76	26.87	R	13	R					2.9	R				
438	18	4	2009	19	58	19.7	38.78	26.89	R	12	R					3.4	R				
439	18	4	2009	21	23	9.8	40.40	25.99	R	8	R					2.8	R				
440	18	4	2009	21	48	29.2	39.05	29.69	R	10	R					2.7	R				

TÜRKİYE DEPREM ETKİNLİĞİ (2009 YILI NİSAN AYI)

No	Tarih - Date			Zaman - Time			Koordinat - Coordinate			Derinlik - Depth		Magnitüd - Magnitude									
	Gün	Ay	Yıl	Saat	Dak.	San.	Enlem-K	Boylam-D	Ref	Km.	Ref	Ms	Ref	Mb	Ref	Md	Ref	MI	Ref	Mw	Ref
441	18	4	2009	23	11	49.2	39.39	44.03	R	9	R							2.2	R		
442	19	4	2009	0	15	2.7	35.96	29.58	R	9	R					3.3	R				
443	19	4	2009	0	28	58.7	37.49	30.42	R	8	R					3.5	R				
444	19	4	2009	0	33	31.8	37.49	30.42	R	12	R					3.1	R				
445	19	4	2009	0	58	7.8	38.59	39.70	R	5	R					2.7	R				
446	19	4	2009	3	55	55.5	37.72	29.85	R	9	R					2.9	R				
447	19	4	2009	4	29	6.1	39.11	29.07	R	5	R					2.7	R				
448	19	4	2009	6	13	3.9	37.97	29.29	R	7	R					3.0	R				
449	19	4	2009	8	13	3.0	38.17	37.77	R	9	R					2.8	R				
450	19	4	2009	9	0	25.3	37.60	35.62	R	6	R							2.0	R		
451	19	4	2009	9	6	53.2	39.03	29.76	R	5	R					2.7	R				
452	19	4	2009	9	19	45.9	39.08	27.54	R	13	R					2.9	R				
453	19	4	2009	12	10	44.1	39.12	27.57	R	2	R					2.8	R				
454	19	4	2009	14	17	31.0	40.08	38.87	R	9	R					2.8	R				
455	19	4	2009	14	32	40.7	37.84	29.09	R	4	R					2.8	R				
456	19	4	2009	14	54	41.0	37.24	28.20	R	6	R					2.9	R				
457	19	4	2009	15	21	20.3	39.50	32.69	R	3	R					3.2	R				
458	19	4	2009	15	47	21.3	40.45	30.03	R	7	R					2.7	R				
459	19	4	2009	16	13	24.6	39.99	40.02	R	6	R					2.8	R				
460	19	4	2009	16	32	43.1	37.00	28.09	R	20	R							1.6	R		

TÜRKİYE DEPREM ETKİNLİĞİ (2009 YILI NİSAN AYI)

No	Tarih - Date			Zaman - Time			Koordinat - Coordinate			Derinlik - Depth		Magnitüd - Magnitude									
	Gün	Ay	Yıl	Saat	Dak.	San.	Enlem-K	Boylam-D	Ref	Km.	Ref	Ms	Ref	Mb	Ref	Md	Ref	MI	Ref	Mw	Ref
461	19	4	2009	18	33	38.4	40.22	42.02	R	4	R					3.2	R				
462	19	4	2009	19	23	7.8	41.11	34.31	R	7	R					2.8	R				
463	19	4	2009	19	27	31.4	38.46	39.21	R	17	R					2.5	R				
464	19	4	2009	19	29	42.8	40.44	37.89	R	5	R					3.1	R				
465	19	4	2009	20	48	22.7	39.13	29.03	R	5	R					3.5	R				
466	19	4	2009	21	17	40.7	41.16	35.73	R	8	R							1.8	R		
467	19	4	2009	22	21	21.0	37.87	27.53	R	14	R					2.6	R				
468	19	4	2009	22	24	11.5	37.83	27.54	R	5	R					3.3	R				
469	19	4	2009	22	40	5.2	37.86	27.54	R	5	R					2.9	R				
470	19	4	2009	23	23	59.7	40.83	28.11	R	12	R					2.8	R				
471	20	4	2009	2	26	21.2	37.11	28.55	R	8	R							1.6	R		
472	20	4	2009	2	51	14.6	40.53	27.19	R	16	R					2.7	R				
473	20	4	2009	3	11	57.7	37.86	27.53	R	5	R					3.0	R				
474	20	4	2009	5	34	12.5	38.13	29.57	R	5	R					2.6	R				
475	20	4	2009	6	30	1.7	38.65	39.04	R	8	R					2.7	R				
476	20	4	2009	8	32	58.2	39.42	33.21	R	8	R					2.5	R				
477	20	4	2009	8	50	25.4	37.27	28.24	R	16	R							1.8	R		
478	20	4	2009	9	36	20.0	40.42	30.04	R	5	R					2.6	R				
479	20	4	2009	10	0	5.6	39.10	27.56	R	13	R					2.9	R				
480	20	4	2009	10	32	35.5	40.37	25.93	R	13	R							3.7	R		

TÜRKİYE DEPREM ETKİNLİĞİ (2009 YILI NİSAN AYI)

No	Tarih - Date			Zaman - Time			Koordinat - Coordinate			Derinlik - Depth		Magnitüd - Magnitude										
	Gün	Ay	Yıl	Saat	Dak.	San.	Enlem-K	Boylam-D	Ref	Km.	Ref	Ms	Ref	Mb	Ref	Md	Ref	MI	Ref	Mw	Ref	
481	20	4	2009	10	35	7.2	37.98	29.40	R	18	R					2.7	R					
482	20	4	2009	10	44	17.0	40.71	27.50	R	16	R					3.1	R					
483	20	4	2009	12	22	47.9	39.12	29.02	R	9	R							3.8	R			
484	20	4	2009	12	31	12.7	39.10	29.03	R	6	R					2.7	R					
485	20	4	2009	12	57	21.2	39.09	29.09	R	8	R					2.7	R					
486	20	4	2009	13	5	59.6	39.10	29.04	R	5	R					2.9	R					
487	20	4	2009	13	6	38.0	38.04	38.17	R	8	R					2.8	R					
488	20	4	2009	13	30	38.9	38.61	31.26	R	8	R					2.7	R					
489	20	4	2009	13	56	28.3	39.72	29.63	R	7	R							2.0	R			
490	20	4	2009	15	3	30.9	38.22	29.64	R	5	R					2.7	R					
491	20	4	2009	15	44	26.7	39.10	29.04	R	6	R					2.8	R					
492	20	4	2009	16	5	22.2	39.14	28.97	R	8	R					2.8	R					
493	20	4	2009	16	7	3.0	40.58	41.00	R	5	R							1.8	R			
494	20	4	2009	16	29	52.3	39.50	33.50	R	10	R					2.6	R					
495	20	4	2009	17	54	16.0	37.86	27.50	R	5	R					2.8	R					
496	20	4	2009	18	57	26.7	37.87	27.51	R	5	R					2.9	R					
497	20	4	2009	20	22	0.5	38.21	38.50	R	8	R					2.9	R					
498	20	4	2009	20	30	13.9	37.86	27.48	R	17	R					2.8	R					
499	20	4	2009	21	41	20.4	39.14	29.05	R	8	R					3.3	R					
500	20	4	2009	23	3	4.1	39.11	29.05	R	6	R					3.1	R					

TÜRKİYE DEPREM ETKİNLİĞİ (2009 YILI NİSAN AYI)

No	Tarih - Date			Zaman - Time			Koordinat - Coordinate			Derinlik - Depth		Magnitüd - Magnitude									
	Gün	Ay	Yıl	Saat	Dak.	San.	Enlem-K	Boylam-D	Ref	Km.	Ref	Ms	Ref	Mb	Ref	Md	Ref	MI	Ref	Mw	Ref
501	20	4	2009	23	8	14.8	37.94	29.26	R	5	R					3.4	R				
502	21	4	2009	3	16	10.6	36.82	27.58	R	5	R							1.4	R		
503	21	4	2009	4	30	33.9	37.27	36.39	R	8	R							1.6	R		
504	21	4	2009	4	42	20.8	39.11	29.08	R	5	R					2.9	R				
505	21	4	2009	5	5	8.8	39.11	29.08	R	5	R					3.0	R				
506	21	4	2009	7	12	40.9	37.33	30.89	R	8	R					2.9	R				
507	21	4	2009	7	30	43.5	39.41	26.32	R	11	R					3.1	R				
508	21	4	2009	10	14	14.3	39.88	39.01	R	5	R					2.9	R				
509	21	4	2009	10	24	58.8	36.82	27.40	R	6	R							2.4	R		
510	21	4	2009	11	24	49.0	38.79	30.90	R	3	R							1.4	R		
511	21	4	2009	12	43	5.7	40.15	30.05	R	2	R					2.6	R				
512	21	4	2009	14	8	46.8	41.08	34.53	R	6	R					3.0	R				
513	21	4	2009	16	2	36.4	39.10	29.04	R	6	R					3.2	R				
514	21	4	2009	17	13	21.2	40.80	30.83	R	10	R					2.8	R				
515	21	4	2009	17	17	36.1	39.07	41.96	R	6	R					3.6	R				
516	21	4	2009	17	45	10.5	38.39	26.39	R	16	R					2.9	R				
517	21	4	2009	18	7	45.6	36.11	27.27	R	82	R							2.5	R		
518	21	4	2009	18	28	11.4	40.61	29.02	R	7	R					2.9	R				
519	21	4	2009	19	1	50.1	39.10	29.06	R	8	R					2.9	R				
520	21	4	2009	19	36	53.0	40.59	29.04	R	11	R					2.6	R				

TÜRKİYE DEPREM ETKİNLİĞİ (2009 YILI NİSAN AYI)

No	Tarih - Date			Zaman - Time			Koordinat - Coordinate			Derinlik - Depth		Magnitüd - Magnitude										
	Gün	Ay	Yıl	Saat	Dak.	San.	Enlem-K	Boylam-D	Ref	Km.	Ref	Ms	Ref	Mb	Ref	Md	Ref	MI	Ref	Mw	Ref	
521	21	4	2009	22	21	35.4	36.93	42.55	R	5	R					3.4	R					
522	21	4	2009	23	34	48.0	40.09	37.68	R	8	R					3.2	R					
523	21	4	2009	23	38	31.1	39.05	27.71	R	3	R					2.9	R					
524	21	4	2009	23	43	46.6	39.05	27.69	R	7	R					2.8	R					
525	21	4	2009	23	54	35.8	37.15	36.33	R	8	R							1.7	R			
526	22	4	2009	4	34	6.0	38.11	40.07	R	9	R					2.9	R					
527	22	4	2009	8	35	55.5	38.33	26.80	R	18	R					2.6	R					
528	22	4	2009	9	53	32.4	36.71	36.62	R	10	R					2.5	R					
529	22	4	2009	10	46	35.8	40.00	33.54	R	5	R					2.6	R					
530	22	4	2009	14	45	56.4	37.01	28.26	R	4	R					2.9	R					
531	22	4	2009	16	24	28.1	40.12	27.67	R	6	R					2.7	R					
532	22	4	2009	17	35	52.9	39.18	28.87	R	6	R					2.6	R					
533	22	4	2009	18	55	1.4	39.21	29.36	R	9	R					2.6	R					
534	22	4	2009	18	56	34.9	38.86	26.84	R	9	R					3.3	R					
535	22	4	2009	19	3	50.4	39.27	29.41	R	8	R					2.5	R					
536	22	4	2009	19	26	52.5	38.83	26.81	R	17	R					3.0	R					
537	22	4	2009	21	48	31.1	39.20	28.98	R	5	R					2.9	R					
538	22	4	2009	21	58	13.3	40.19	30.38	R	6	R					2.5	R					
539	22	4	2009	22	15	29.6	38.63	31.14	R	5	R					3.2	R					
540	23	4	2009	0	26	17.4	36.80	42.51	R	5	R							3.9	R			

TÜRKİYE DEPREM ETKİNLİĞİ (2009 YILI NİSAN AYI)

No	Tarih - Date			Zaman - Time			Koordinat - Coordinate			Derinlik - Depth		Magnitüd - Magnitude									
	Gün	Ay	Yıl	Saat	Dak.	San.	Enlem-K	Boylam-D	Ref	Km.	Ref	Ms	Ref	Mb	Ref	Md	Ref	MI	Ref	Mw	Ref
541	23	4	2009	2	56	3.3	39.15	29.10	R	4	R					3.3	R				
542	23	4	2009	3	38	21.0	38.05	30.11	R	10	R					2.9	R				
543	23	4	2009	4	58	2.3	37.14	28.46	R	4	R					2.7	R				
544	23	4	2009	9	12	14.2	37.10	37.10	R	4	R					2.8	R				
545	23	4	2009	9	22	48.8	37.70	36.57	R	5	R					2.6	R				
546	23	4	2009	15	0	57.9	38.70	38.18	R	5	R					3.1	R				
547	23	4	2009	15	17	8.9	37.52	35.50	R	9	R					2.9	R				
548	23	4	2009	15	29	16.1	39.10	28.97	R	2	R					2.4	R				
549	23	4	2009	16	0	17.4	39.20	29.05	R	8	R					2.8	R				
550	23	4	2009	16	56	38.9	40.35	26.98	R	12	R					2.6	R				
551	23	4	2009	17	43	16.7	37.11	27.58	R	9	R					2.8	R				
552	23	4	2009	18	1	28.8	39.58	38.68	R	13	R					2.9	R				
553	23	4	2009	18	24	0.9	38.00	38.05	R	7	R					3.0	R				
554	23	4	2009	18	37	14.7	37.10	27.59	R	9	R					2.8	R				
555	23	4	2009	20	36	53.7	38.25	39.31	R	5	R					2.6	R				
556	23	4	2009	20	59	49.0	39.10	29.08	R	5	R					2.7	R				
557	23	4	2009	22	20	8.3	38.91	38.77	R	5	R					2.8	R				
558	23	4	2009	22	40	50.1	40.61	36.97	R	8	R					2.9	R				
559	23	4	2009	23	22	59.3	38.67	39.84	R	18	R					2.9	R				
560	24	4	2009	1	16	22.1	37.44	27.69	R	5	R					2.7	R				

TÜRKİYE DEPREM ETKİNLİĞİ (2009 YILI NİSAN AYI)

No	Tarih - Date			Zaman - Time			Koordinat - Coordinate			Derinlik - Depth		Magnitüd - Magnitude									
	Gün	Ay	Yıl	Saat	Dak.	San.	Enlem-K	Boylam-D	Ref	Km.	Ref	Ms	Ref	Mb	Ref	Md	Ref	MI	Ref	Mw	Ref
561	24	4	2009	1	49	49.8	39.10	29.03	R	7	R					2.7	R				
562	24	4	2009	2	14	55.4	39.12	28.98	R	5	R					2.7	R				
563	24	4	2009	2	50	31.5	34.88	26.28	R	40	R							3.6	R		
564	24	4	2009	3	12	21.6	39.16	29.06	R	5	R					2.6	R				
565	24	4	2009	3	50	19.6	41.04	25.91	R	5	R					3.1	R				
566	24	4	2009	4	16	59.0	38.98	29.61	R	5	R					2.9	R				
567	24	4	2009	4	24	29.6	37.11	27.59	R	17	R					2.4	R				
568	24	4	2009	6	45	37.0	39.11	29.02	R	5	R					3.3	R				
569	24	4	2009	9	10	28.4	37.28	28.23	R	11	R					2.6	R				
570	24	4	2009	9	24	50.0	37.56	35.73	R	20	R					3.0	R				
571	24	4	2009	9	25	34.9	38.72	29.29	R	18	R					2.6	R				
572	24	4	2009	9	42	52.4	38.09	38.53	R	14	R					3.3	R				
573	24	4	2009	9	47	23.1	36.86	37.42	R	20	R					2.7	R				
574	24	4	2009	11	27	2.2	37.90	32.62	R	9	R					2.6	R				
575	24	4	2009	12	25	23.5	38.81	39.09	R	14	R					2.6	R				
576	24	4	2009	12	54	15.4	41.72	35.53	R	9	R					2.7	R				
577	24	4	2009	14	16	42.3	39.09	29.04	R	6	R					2.5	R				
578	24	4	2009	15	46	27.5	41.62	28.49	R	10	R							2.2	R		
579	24	4	2009	15	59	3.4	40.46	26.93	R	17	R					2.3	R				
580	24	4	2009	16	3	33.3	39.21	41.73	R	2	R					3.2	R				

TÜRKİYE DEPREM ETKİNLİĞİ (2009 YILI NİSAN AYI)

No	Tarih - Date			Zaman - Time			Koordinat - Coordinate			Derinlik - Depth		Magnitüd - Magnitude									
	Gün	Ay	Yıl	Saat	Dak.	San.	Enlem-K	Boylam-D	Ref	Km.	Ref	Ms	Ref	Mb	Ref	Md	Ref	MI	Ref	Mw	Ref
581	24	4	2009	16	32	12.6	40.14	27.95	R	11	R					2.5	R				
582	24	4	2009	16	54	10.3	36.94	29.08	R	6	R					2.9	R				
583	24	4	2009	18	28	49.1	38.48	45.10	R	5	R					3.7	R				
584	24	4	2009	18	53	33.0	39.11	29.03	R	16	R					2.7	R				
585	24	4	2009	19	31	8.5	38.89	26.88	R	14	R					3.1	R				
586	24	4	2009	20	28	31.6	40.03	43.21	R	28	R					3.0	R				
587	25	4	2009	1	7	0.4	40.59	31.89	R	13	R					2.4	R				
588	25	4	2009	1	52	22.3	39.92	38.78	R	14	R					2.7	R				
589	25	4	2009	2	9	11.5	38.38	39.24	R	12	R					2.2	R				
590	25	4	2009	2	40	31.5	37.56	35.75	R	15	R					2.2	R				
591	25	4	2009	3	11	31.4	39.15	28.94	R	17	R					2.4	R				
592	25	4	2009	3	15	56.1	39.10	27.33	R	14	R					2.9	R				
593	25	4	2009	4	3	16.8	39.10	29.41	R	9	R					2.6	R				
594	25	4	2009	4	23	6.2	39.41	33.05	R	6	R					3.0	R				
595	25	4	2009	5	28	8.0	40.83	27.79	R	10	R					2.5	R				
596	25	4	2009	5	29	57.8	40.82	27.78	R	3	R					2.7	R				
597	25	4	2009	6	15	32.1	38.97	41.13	R	3	R					3.1	R				
598	25	4	2009	6	33	8.3	40.35	25.92	R	9	R					3.0	R				
599	25	4	2009	6	46	20.9	37.86	29.08	R	4	R					2.9	R				
600	25	4	2009	8	50	4.0	37.31	28.26	R	4	R					2.3	R				

TÜRKİYE DEPREM ETKİNLİĞİ (2009 YILI NİSAN AYI)

No	Tarih - Date			Zaman - Time			Koordinat - Coordinate			Derinlik - Depth		Magnitüd - Magnitude									
	Gün	Ay	Yıl	Saat	Dak.	San.	Enlem-K	Boylam-D	Ref	Km.	Ref	Ms	Ref	Mb	Ref	Md	Ref	MI	Ref	Mw	Ref
601	25	4	2009	9	52	48.7	34.87	33.23	R	55	R					2.8	R				
602	25	4	2009	10	6	18.0	40.16	28.73	R	5	R					2.9	R				
603	25	4	2009	10	46	55.3	41.42	35.15	R	7	R					2.9	R				
604	25	4	2009	11	11	50.9	37.55	35.83	R	18	R					2.5	R				
605	25	4	2009	12	14	13.3	38.24	38.30	R	12	R					2.7	R				
606	25	4	2009	13	17	46.5	40.45	28.95	R	8	R					2.1	R				
607	25	4	2009	16	4	22.0	39.27	27.94	R	6	R					3.3	R				
608	25	4	2009	18	15	6.7	39.45	28.19	R	17	R					2.8	R				
609	25	4	2009	20	27	49.8	40.77	30.08	R	14	R					2.7	R				
610	25	4	2009	21	38	55.9	38.78	26.22	R	12	R					2.8	R				
611	25	4	2009	21	57	41.3	39.82	41.56	R	7	R					3.3	R				
612	25	4	2009	22	4	53.1	36.55	34.40	R	13	R					3.5	R				
613	25	4	2009	22	36	21.5	38.92	31.47	R	5	R					3.1	R				
614	25	4	2009	22	37	33.7	36.09	28.33	R	24	R					2.6	R				
615	25	4	2009	23	23	3.2	39.02	38.44	R	18	R					2.6	R				
616	25	4	2009	23	47	33.0	39.06	29.49	R	8	R					2.7	R				
617	26	4	2009	0	59	46.5	39.40	28.25	R	12	R					3.0	R				
618	26	4	2009	1	8	12.0	37.53	35.64	R	7	R					2.7	R				
619	26	4	2009	2	8	1.8	37.84	27.51	R	5	R					3.2	R				
620	26	4	2009	2	22	39.7	37.85	27.53	R	2	R					3.1	R				

TÜRKİYE DEPREM ETKİNLİĞİ (2009 YILI NİSAN AYI)

No	Tarih - Date			Zaman - Time			Koordinat - Coordinate			Derinlik - Depth		Magnitüd - Magnitude									
	Gün	Ay	Yıl	Saat	Dak.	San.	Enlem-K	Boylam-D	Ref	Km.	Ref	Ms	Ref	Mb	Ref	Md	Ref	MI	Ref	Mw	Ref
621	26	4	2009	2	55	16.9	37.85	27.54	R	6	R					2.6	R				
622	26	4	2009	3	10	26.4	36.99	28.21	R	15	R					2.3	R				
623	26	4	2009	3	28	44.4	39.18	28.45	R	5	R					3.0	R				
624	26	4	2009	3	57	58.6	38.07	26.86	R	6	R					3.4	R				
625	26	4	2009	4	15	46.7	39.08	29.03	R	6	R					2.8	R				
626	26	4	2009	4	22	12.0	35.80	27.76	R	18	R					2.9	R				
627	26	4	2009	5	7	10.2	36.25	29.60	R	14	R					2.9	R				
628	26	4	2009	6	46	19.3	40.35	27.46	R	3	R					2.1	R				
629	26	4	2009	6	58	25.8	40.47	29.20	R	5	R					2.5	R				
630	26	4	2009	8	56	21.6	37.28	28.21	R	5	R					2.6	R				
631	26	4	2009	9	2	46.1	39.44	28.14	R	5	R					2.7	R				
632	26	4	2009	9	58	32.0	39.89	27.75	R	6	R					2.6	R				
633	26	4	2009	10	42	17.2	40.98	40.52	R	13	R					2.8	R				
634	26	4	2009	11	0	33.8	36.93	29.32	R	6	R					2.8	R				
635	26	4	2009	12	20	55.0	40.65	26.45	R	11	R					2.6	R				
636	26	4	2009	13	56	47.8	39.08	41.86	R	5	R					3.3	R				
637	26	4	2009	16	1	6.1	40.02	40.00	R	15	R					2.5	R				
638	26	4	2009	16	18	14.9	36.69	26.61	R	11	R					3.0	R				
639	26	4	2009	17	45	39.2	36.30	29.50	R	7	R					3.0	R				
640	26	4	2009	18	32	52.5	37.55	35.73	R	17	R					2.1	R				

TÜRKİYE DEPREM ETKİNLİĞİ (2009 YILI NİSAN AYI)

No	Tarih - Date			Zaman - Time			Koordinat - Coordinate			Derinlik - Depth		Magnitüd - Magnitude									
	Gün	Ay	Yıl	Saat	Dak.	San.	Enlem-K	Boylam-D	Ref	Km.	Ref	Ms	Ref	Mb	Ref	Md	Ref	MI	Ref	Mw	Ref
641	27	4	2009	1	4	49.9	38.58	30.63	R	6	R					2.2	R				
642	27	4	2009	1	4	49.9	38.58	30.63	R	6	R					2.2	R				
643	27	4	2009	1	49	33.6	38.33	25.07	R	12	R					3.6	R				
644	27	4	2009	3	10	46.7	35.32	26.17	R	39	R					3.7	R				
645	27	4	2009	7	11	24.3	38.56	27.74	R	14	R					2.6	R				
646	27	4	2009	7	25	43.9	38.50	39.28	R	4	R					2.1	R				
647	27	4	2009	9	5	32.3	39.16	28.45	R	18	R					2.7	R				
648	27	4	2009	9	9	59.5	39.07	27.60	R	15	R					2.8	R				
649	27	4	2009	9	24	36.0	39.58	29.90	R	9	R					2.7	R				
650	27	4	2009	9	50	25.6	39.14	29.08	R	5	R					3.3	R				
651	27	4	2009	10	0	13.2	37.72	29.31	R	5	R					2.9	R				
652	27	4	2009	11	31	52.9	38.11	32.67	R	5	R					2.8	R				
653	27	4	2009	12	30	20.4	41.36	35.87	R	5	R					3.0	R				
654	27	4	2009	12	46	12.3	38.82	36.02	R	7	R					2.7	R				
655	27	4	2009	12	55	14.6	37.03	27.92	R	11	R					2.6	R				
656	27	4	2009	16	1	34.4	40.56	30.32	R	4	R					2.8	R				
657	27	4	2009	16	3	13.8	40.21	30.02	R	15	R					2.7	R				
658	27	4	2009	18	9	8.4	39.51	36.72	R	5	R					3.1	R				
659	27	4	2009	18	53	19.2	34.98	32.48	R	11	R					2.8	R				
660	27	4	2009	19	1	3.8	34.94	32.43	R	15	R					2.9	R				

TÜRKİYE DEPREM ETKİNLİĞİ (2009 YILI NİSAN AYI)

No	Tarih - Date			Zaman - Time			Koordinat - Coordinate			Derinlik - Depth		Magnitüd - Magnitude									
	Gün	Ay	Yıl	Saat	Dak.	San.	Enlem-K	Boylam-D	Ref	Km.	Ref	Ms	Ref	Mb	Ref	Md	Ref	MI	Ref	Mw	Ref
661	27	4	2009	19	3	7.0	40.73	27.53	R	18	R							3.9	R		
662	27	4	2009	19	34	36.6	40.74	27.55	R	12	R					3.1	R				
663	27	4	2009	19	46	19.6	38.08	28.96	R	2	R					2.3	R				
664	27	4	2009	19	47	14.2	34.80	32.65	R	26	R					2.6	R				
665	27	4	2009	20	36	33.5	34.54	24.85	R	51	R			4.7	N						
666	27	4	2009	21	44	41.2	37.80	43.55	R	2	R					2.5	R				
667	27	4	2009	21	45	59.4	35.34	32.59	R	5	R					2.3	R				
668	27	4	2009	21	57	26.9	38.90	29.91	R	12	R					2.4	R				
669	27	4	2009	22	58	1.6	38.79	31.39	R	13	R					2.9	R				
670	27	4	2009	23	13	11.5	38.74	31.41	R	4	R					2.8	R				
671	28	4	2009	0	22	28.2	40.76	27.52	R	2	R					2.5	R				
672	28	4	2009	0	41	18.2	35.97	26.78	R	6	R					3.2	R				
673	28	4	2009	1	16	9.2	36.16	27.47	R	3	R					3.0	R				
674	28	4	2009	1	31	31.9	38.06	28.94	R	5	R					2.9	R				
675	28	4	2009	1	54	15.5	40.75	27.60	R	2	R					2.6	R				
676	28	4	2009	1	59	33.8	38.04	28.89	R	6	R					3.1	R				
677	28	4	2009	2	33	53.3	36.26	27.43	R	22	R							3.8	R		
678	28	4	2009	3	14	38.6	39.25	27.48	R	5	R					3.0	R				
679	28	4	2009	3	35	13.4	40.65	30.65	R	8	R					2.7	R				
680	28	4	2009	3	45	30.4	40.68	30.61	R	5	R					3.5	R				

TÜRKİYE DEPREM ETKİNLİĞİ (2009 YILI NİSAN AYI)

No	Tarih - Date			Zaman - Time			Koordinat - Coordinate			Derinlik - Depth		Magnitüd - Magnitude									
	Gün	Ay	Yıl	Saat	Dak.	San.	Enlem-K	Boylam-D	Ref	Km.	Ref	Ms	Ref	Mb	Ref	Md	Ref	MI	Ref	Mw	Ref
681	28	4	2009	3	47	6.6	40.68	30.62	R	5	R					3.5	R				
682	28	4	2009	3	49	18.5	40.67	30.66	R	10	R					2.7	R				
683	28	4	2009	4	4	11.4	40.68	30.65	R	9	R					2.7	R				
684	28	4	2009	4	9	2.0	40.67	30.64	R	7	R					3.0	R				
685	28	4	2009	4	12	20.8	39.48	33.11	R	3	R					2.6	R				
686	28	4	2009	4	18	57.0	36.58	35.93	R	4	R					3.3	R				
687	28	4	2009	7	13	7.7	40.66	30.65	R	16	R					2.3	R				
688	28	4	2009	14	57	57.9	40.35	30.50	R	5	R					2.8	R				
689	28	4	2009	15	17	6.2	39.10	29.99	R	5	R					2.5	R				
690	28	4	2009	17	21	22.8	38.00	29.16	R	5	R					2.5	R				
691	28	4	2009	18	11	5.8	38.97	29.98	R	5	R					2.9	R				
692	28	4	2009	18	28	21.8	39.10	41.82	R	5	R					3.6	R				
693	28	4	2009	18	36	31.9	37.92	29.21	R	7	R					3.1	R				
694	28	4	2009	18	54	40.3	40.74	27.53	R	7	R					2.4	R				
695	28	4	2009	19	12	44.1	37.17	28.55	R	14	R					2.5	R				
696	28	4	2009	19	23	43.7	36.93	27.27	R	7	R					2.6	R				
697	28	4	2009	20	9	0.7	38.74	27.26	R	9	R					3.6	R				
698	28	4	2009	20	12	57.4	36.12	27.49	R	10	R					2.9	R				
699	28	4	2009	20	37	56.1	37.15	27.58	R	7	R					2.6	R				
700	28	4	2009	21	23	54.3	40.08	38.67	R	2	R					3.0	R				

TÜRKİYE DEPREM ETKİNLİĞİ (2009 YILI NİSAN AYI)

No	Tarih - Date			Zaman - Time			Koordinat - Coordinate			Derinlik - Depth		Magnitüd - Magnitude									
	Gün	Ay	Yıl	Saat	Dak.	San.	Enlem-K	Boylam-D	Ref	Km.	Ref	Ms	Ref	Mb	Ref	Md	Ref	MI	Ref	Mw	Ref
701	28	4	2009	21	51	30.5	39.13	29.05	R	4	R					3.0	R				
702	28	4	2009	22	40	14.0	38.75	27.23	R	8	R					3.2	R				
703	28	4	2009	23	18	48.2	38.75	27.21	R	7	R					2.9	R				
704	29	4	2009	1	42	41.7	37.11	36.25	R	7	R					3.4	R				
705	29	4	2009	2	11	38.7	37.71	43.12	R	11	R					2.9	R				
706	29	4	2009	2	33	27.2	37.89	29.22	R	6	R					2.9	R				
707	29	4	2009	3	34	7.4	39.54	26.02	R	5	R					3.3	R				
708	29	4	2009	4	58	28.8	39.47	28.04	R	15	R					2.7	R				
709	29	4	2009	8	50	31.6	41.14	27.75	R	5	R					2.6	R				
710	29	4	2009	8	51	9.6	38.45	39.07	R	5	R					3.0	R				
711	29	4	2009	8	53	14.1	41.15	27.74	R	2	R					2.5	R				
712	29	4	2009	8	55	50.4	37.28	28.24	R	13	R					2.7	R				
713	29	4	2009	12	16	28.6	39.94	28.84	R	4	R					2.9	R				
714	29	4	2009	12	36	12.0	40.38	39.70	R	22	R					2.4	R				
715	29	4	2009	12	50	55.3	38.85	35.80	R	5	R					3.4	R				
716	29	4	2009	13	18	18.6	41.08	36.11	R	7	R					2.3	R				
717	29	4	2009	13	38	20.2	38.21	38.77	R	12	R					2.3	R				
718	29	4	2009	13	39	57.7	38.01	38.24	R	3	R					2.6	R				
719	29	4	2009	14	1	44.9	37.10	27.93	R	5	R					2.4	R				
720	29	4	2009	14	12	50.5	37.09	27.95	R	17	R					2.4	R				

TÜRKİYE DEPREM ETKİNLİĞİ (2009 YILI NİSAN AYI)

No	Tarih - Date			Zaman - Time			Koordinat - Coordinate			Derinlik - Depth		Magnitüd - Magnitude									
	Gün	Ay	Yıl	Saat	Dak.	San.	Enlem-K	Boylam-D	Ref	Km.	Ref	Ms	Ref	Mb	Ref	Md	Ref	MI	Ref	Mw	Ref
721	29	4	2009	15	15	33.4	37.49	35.50	R	5	R					3.0	R				
722	29	4	2009	15	34	22.8	38.44	29.71	R	3	R					3.0	R				
723	29	4	2009	15	55	55.3	40.59	30.34	R	7	R					2.9	R				
724	29	4	2009	17	52	12.5	36.99	28.22	R	3	R					2.7	R				
725	29	4	2009	18	12	34.7	40.25	35.24	R	5	R					2.9	R				
726	29	4	2009	18	28	0.6	35.76	31.57	R	31	R					3.2	R				
727	29	4	2009	21	29	9.7	39.50	33.10	R	5	R					2.9	R				
728	29	4	2009	21	31	52.2	37.57	35.56	R	8	R					2.6	R				
729	29	4	2009	21	40	56.8	40.43	26.04	R	2	R					3.0	R				
730	29	4	2009	23	44	0.1	41.17	25.59	R	5	R					3.3	R				
731	30	4	2009	0	8	12.4	40.70	35.45	R	5	R					2.9	R				
732	30	4	2009	0	39	46.9	41.12	34.85	R	5	R					2.7	R				
733	30	4	2009	0	50	51.9	36.82	27.02	R	106	R					3.0	R				
734	30	4	2009	1	7	21.5	38.81	25.61	R	8	R					3.3	R				
735	30	4	2009	2	0	40.0	38.96	27.59	R	12	R					3.0	R				
736	30	4	2009	4	31	47.2	39.59	27.77	R	7	R					2.8	R				
737	30	4	2009	6	3	24.8	37.01	29.07	R	6	R					2.8	R				
738	30	4	2009	6	3	59.0	37.95	29.13	R	7	R					3.0	R				
739	30	4	2009	9	48	13.9	37.10	38.74	R	8	R					2.8	R				
740	30	4	2009	10	48	57.5	37.54	35.71	R	15	R					2.6	R				

TÜRKİYE DEPREM ETKİNLİĞİ (2009 YILI NİSAN AYI)

No	Tarih - Date			Zaman - Time			Koordinat - Coordinate			Derinlik - Depth		Magnitüd - Magnitude									
	Gün	Ay	Yıl	Saat	Dak.	San.	Enlem-K	Boylam-D	Ref	Km.	Ref	Ms	Ref	Mb	Ref	Md	Ref	MI	Ref	Mw	Ref
741	30	4	2009	11	28	28.0	36.22	27.63	R	5	R					3.0	R				
742	30	4	2009	13	7	19.0	37.82	27.54	R	10	R					3.2	R				
743	30	4	2009	14	46	52.9	39.33	27.92	R	18	R					2.7	R				
744	30	4	2009	14	53	13.3	38.97	27.60	R	6	R					3.5	R				
745	30	4	2009	14	56	56.3	37.34	28.25	R	5	R					2.7	R				
746	30	4	2009	15	11	59.0	39.07	29.11	R	9	R					3.0	R				
747	30	4	2009	16	26	21.9	40.34	27.96	R	12	R					2.4	R				
748	30	4	2009	17	15	47.7	34.57	27.45	R	35	R							4.0	R		
749	30	4	2009	17	53	28.4	36.68	27.15	R	5	R					3.0	R				
750	30	4	2009	22	0	6.4	39.35	28.23	R	10	R					2.9	R				
751	30	4	2009	22	31	38.0	37.87	43.03	R	9	R					3.6	R				
752	30	4	2009	22	42	27.0	37.87	43.01	R	7	R					4.0	R				