



*Kandilli Rasathanesi Ve Deprem Araştırma Enstitüsü*

*ULUSAL DEPREM İZLEME MERKEZİ*



*2009 MART AYI  
BÜLTENİ*

*YIL: 6 - SAYI: 63  
İSTANBUL*

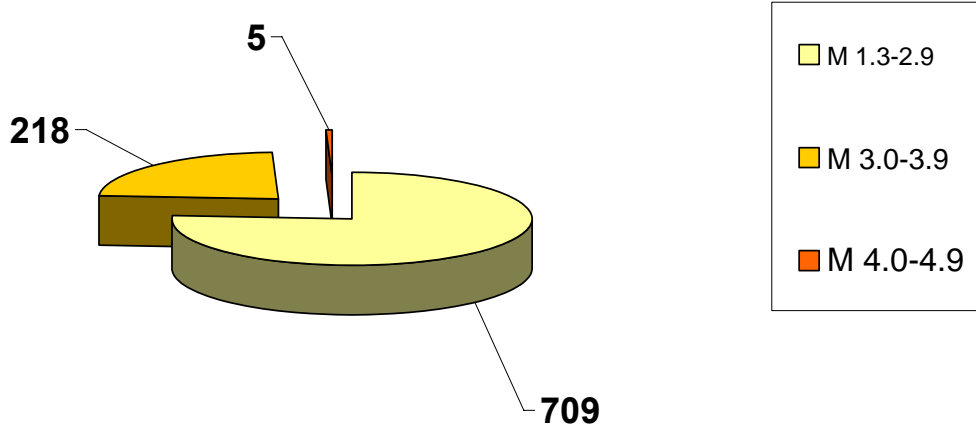
## **Hazırlayan ve Katkıda Bulunanlar**

*D. Kalafat*  
*K. Kekovalı*  
*K. Kılıç*  
*Y. Güneş*  
*M. Yilmazer*  
*Z. Öğütçü*  
*M. Kara*  
*M. Suvarıklı*  
*A. Güngör*  
*A. Küsmezer*  
*F. Kılıçer Bekler*  
*P. Deniz*  
*A. Berberoğlu*  
*M. Çomoğlu*  
*M. Berberoğlu*  
*H. Gümüş*  
*S. Altuncu*  
*D.Kepekçi*  
*R.Polat*  
*Ö.Çok*

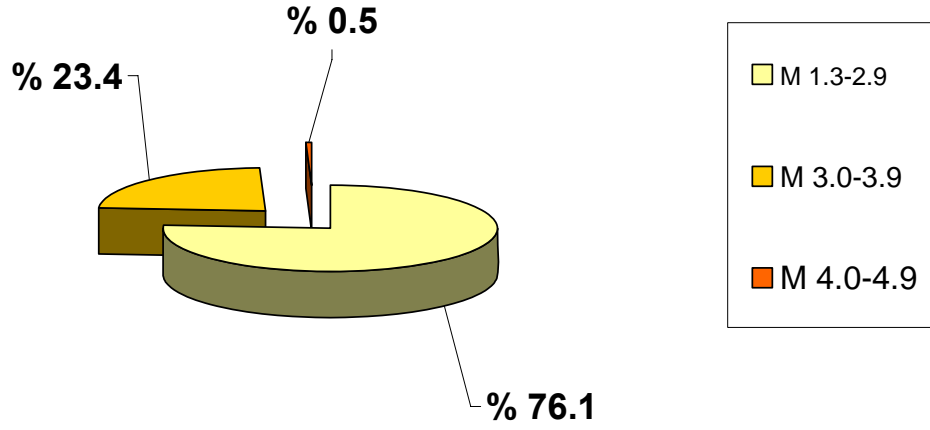
2009 yılı MART ayında meydana gelen depremlerin  
istatistiksel dağılımı

<b>MAGNİTÜD ARALIĞI</b>	<b>TOPLAM</b>
1.3-2.9	709
3.0-3.9	218
4.0-4.9	5
5.0-5.9	—
6.0-6.9	—
7.0-	—
<b>TOPLAM</b>	<b>932</b>

**2009 MART AYI DEPREMLERİNİN İSTATİSTİKSEL DAĞILIMI**  
(Toplam: 932 Adet )



**2009 MART AYI DEPREMLERİNİN İSTATİSTİKSEL DAĞILIMI (%)**



## DEĞERLENDİRME

Mart ayında toplam 932 depremin çözümü yapılmıştır. Büyüklüğü 4.0 ve üzerinde olan deprem sayısı 5 adettir. Toplam meydana gelen depremlerin % 76.1 oranını büyüklükleri M=1.3-2.9 arasındaki depremler oluşturmaktadır.

Toplam 94 adet geniş bantlı (Broad Band) istasyonun Şubat ayı içerisindeki çalışma performansları % 86 dir. İstasyon verimliliklerine baktığımızda, Dalyan (DALT; kapalı), Gökçeada (GADA), Hadim (HDMB), Işıklı (IKL), Karaisalı (KARA), Kilyos (KLYT), Marmara Adası (MRMT), ve Şırnak (SIRT; kapalı) bu ay içerisindeki verimsiz istasyonlardır.

Toplam 27 adet kısa periyotlu (SP) istasyonun Mart ayı içerisindeki çalışma performansları % 94 olup, Eskiayla (EYL) istasyonu bu ay içindeki verimsiz istasyondur.

Mart ayı itibarıyla deprem istasyonlarının ve *sismik ağın ortalama verimlilik performansı % 88* olmuştur.

Bu ay içerisinde Hereke'de bulunan Kısa Periyot Telemetri istasyonu (HRT) kapatılmıştır. Hereke'de uydu iletişimli, geniş bantlı deprem istasyonu (HRTX) çalışmaktadır.

Mart ayındaki en önemli deprem 02.03.2009 saat 22:02'de (GMT) Kos Adası Açıkları-Akdeniz'de (Ml=4.6) meydana gelmiştir. Bunun dışında 21.03.2009 saat 20:35'de (GMT) Girit Adası Açıkları-Akdeniz (Ml=4.4), 10.03.2009 saat 17:11'de (GMT) Girit Adası Açıkları-Akdeniz (Ml=4.3), 11.03.2009 saat 17:26'da Eretepe-Bulanık-MUŞ'da (Ml=4.3) ve 01.03.2009 saat 20:53'de Midyat-MARDİN'de (Ml=4.0) orta büyüklükte deprem aktiviteleri meydana gelmiştir.

Ayrıca, Çameli-Honaz-Sarayköy-Akköy-Denizli, Kuşadası Körfezi, Afşar-Bala-Ankara, Kozan-Adana, Çınarcık-Yalova, Gemlik-Bursa, Tekirdağ Açıkları-Marmara Denizi'nde, Saros Körfezi'nde, Oniki Adalar bölgesinde, Simav- Kütahya'da, Ege Denizi'nin Türkiye kıyıları boyunca meydana gelen deprem etkinlikleri dikkat çekmektedir. Doğu Anadolu Fay Zonu boyunca, Sivrice-Elazığ, Yedisu-Bingöl, Akçadağ-Doğanşehir-Sürgü-Malatya'da deprem etkinlikleri gözlenmiştir.

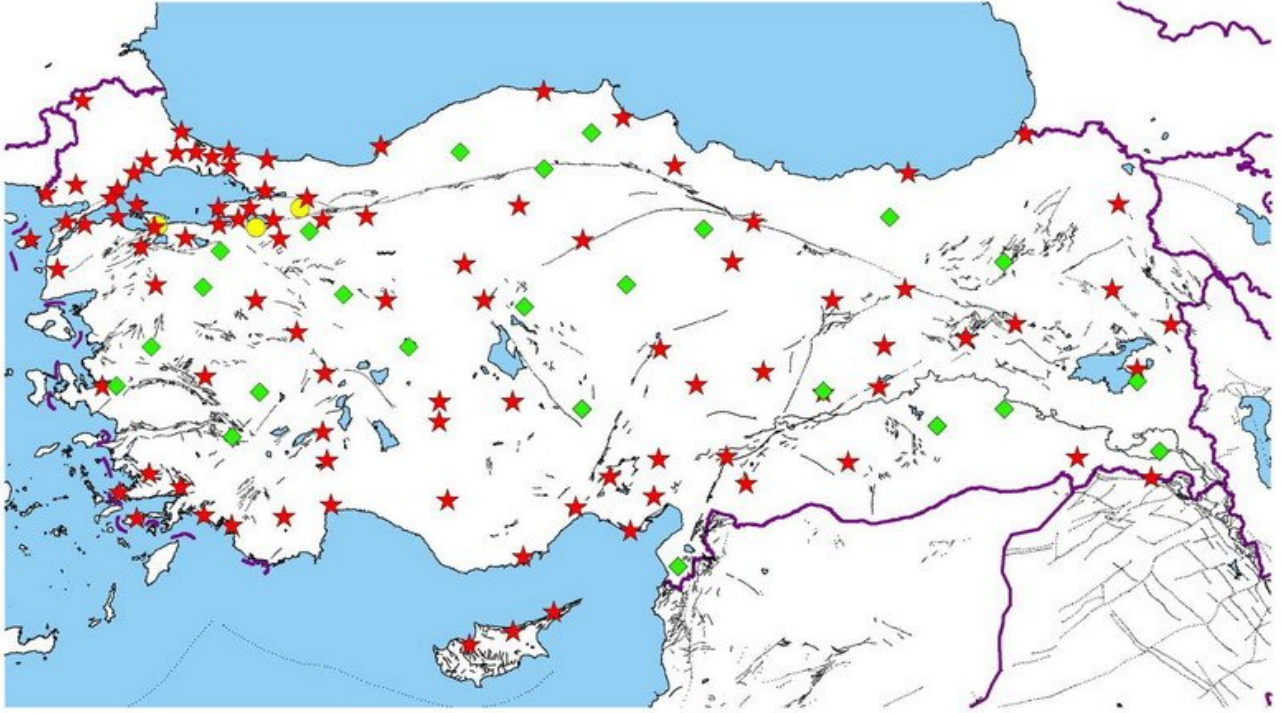
MART 2009

İSTASYON VERİMLİLİK

TABLoları

B.Ü.  
KANDILLI RASATHANESİ VE DEPREM ARAŞTIRMA ENSTİTÜSÜ  
ULUSAL DEPREM İZLEME MERKEZİ  
DEPREM İSTASYONLARI

Mart 2009  
Toplam: 121 Adet



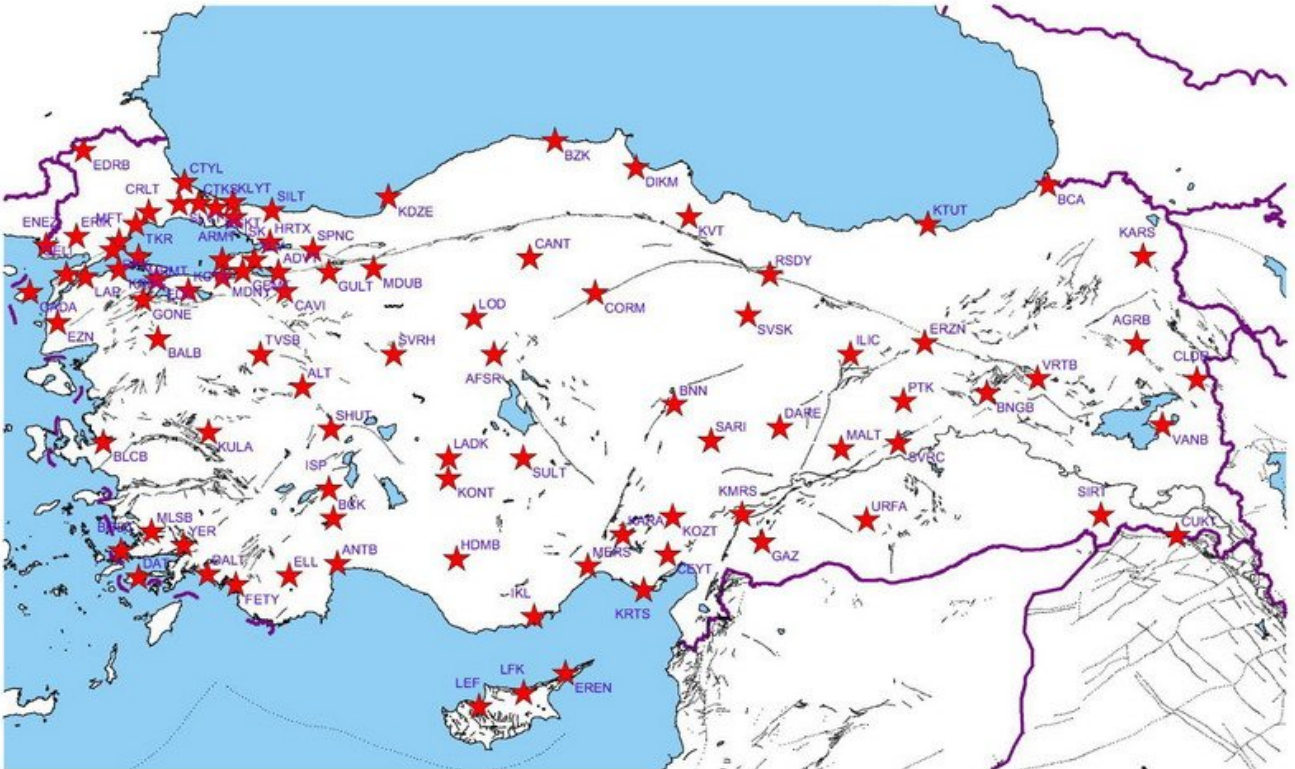
★ GENİŞ BAND

◆ KISA PERİYOT

● TELEMETRİ KISA PERİYOT

**BROAD BAND DEPREM İSTASYONLARI**

Mart 2009  
94 Adet



Adet	Yöntem	Kod	(+)adet	(-)adet	TOPLAM GÜN	(+)%	(-)%	(+)%	(-)%
1	1	ADVT	10	21	31	32	68		
2	2	AFSR	31	0	31	100	0		
3	3	AGRB	31	0	31	100	0		
4	4	ALT	31	0	31	100	0		
5	5	ANTB	31	0	31	100	0		
6	6	ARMT	26	5	31	84	16		
7	7	BALB	31	0	31	100	0		
8	8	BCA	29	2	31	94	6		
9	9	BCK	31	0	31	100	0		
10	10	BGKT	31	0	31	100	0		
11	11	BLCB	29	2	31	94	6		
12	12	BNGB	30	1	31	97	3		
13	13	BNN	31	0	31	100	0		
14	14	BODT	31	0	31	100	0		
15	15	BZK	31	0	31	100	0		
16	16	CANT	31	0	31	100	0		
17	17	CAVI	30	1	31	97	3		
18	18	CEYT	30	1	31	97	3		
19	19	CLDR	30	1	31	97	3		
20	20	CORM	31	0	31	100	0		
21	21	CRLT	31	0	31	100	0		
22	22	CTKS	31	0	31	100	0		
23	23	CTYL	30	1	31	97	3		
24	24	CUKT	29	2	31	94	6		
25	25	DALT	0	31	31	0	100		
26	26	DARE	24	7	31	77	23		
27	27	DAT	13	18	31	42	58		
28	28	DIKM	31	0	31	100	0		
29	29	EDC	31	0	31	100	0		
30	30	EDRB	31	0	31	100	0		
31	31	ELL	31	0	31	100	0		
32	32	ENEZ	31	0	31	100	0		
33	33	EREN	30	1	31	97	3		
34	34	ERIK	16	15	31	52	48		
35	35	ERZN	30	1	31	97	3		
36	36	EZN	29	2	31	94	6		
37	37	FETY	28	3	31	90	10		
38	38	GADA	0	31	31	0	100		
39	39	GAZ	31	0	31	100	0		
40	40	GELI	31	0	31	100	0		
41	41	GEMT	31	0	31	100	0		
42	42	GONE	31	0	31	100	0		
43	43	GULT	31	0	31	100	0		
44	44	HDMB	0	31	31	0	100		
45	45	HRTX	31	0	31	100	0		
46	46	IKL	0	31	31	0	100		
47	47	ILIC	31	0	31	100	0		
48	48	ISK	31	0	31	100	0		
49	49	ISP	31	0	31	100	0		
50	50	KARA	0	31	31	0	100		
51	51	KARS	31	0	31	100	0		
52	52	KCTX	7	24	31	23	77		
53	53	KDZE	31	0	31	100	0		
54	54	KLYT	2	29	31	6	94		
55	55	KMRS	31	0	31	100	0		
56	56	KONT	31	0	31	100	0		
57	57	KOZT	31	0	31	100	0		
58	58	KRBG	31	0	31	100	0		
59	59	KRTS	31	0	31	100	0		
60	60	KTUT	15	16	31	48	52		
61	61	KULA	30	1	31	97	3		
62	62	KVT	31	0	31	100	0		
63	63	LADK	31	0	31	100	0		
64	64	LAP	31	0	31	100	0		
65	65	LEF	29	2	31	94	6		
66	66	LFK	31	0	31	100	0		
67	67	LOD	31	0	31	100	0		
68	68	MALT	31	0	31	100	0		
69	69	MDUB	30	1	31	97	3		
70	70	MDYN	31	0	31	100	0		
71	71	MERS	31	0	31	100	0		
72	72	MFTX	31	0	31	100	0		
73	73	MLSB	29	2	31	94	6		
74	74	MRMT	2	29	31	6	94		
75	75	PTK	19	12	31	61	39		
76	76	RKY	31	0	31	100	0		
77	77	RSDY	31	0	31	100	0		
78	78	SARIZ	17	14	31	55	45		
79	79	SHUT	31	0	31	100	0		
80	80	SILT	21	10	31	68	32		
81	81	SIRT	0	31	31	0	100		
82	82	SPNC	31	0	31	100	0		
83	83	SLVT	31	0	31	100	0		
84	84	SULT	31	0	31	100	0		
85	85	SVRC	31	0	31	100	0		
86	86	SVRH	31	0	31	100	0		
87	87	SVSK	29	2	31	94	6		
88	88	TKR	31	0	31	100	0		
89	89	TVSB	31	0	31	100	0		
90	90	URFA	31	0	31	100	0		
91	91	VANB	31	0	31	100	0		
92	92	VRTB	31	0	31	100	0		
93	93	YER	31	0	31	100	0		
94	94	YLVX	31	0	31	100	0		

GENİŞ BANTLI (BROAD-BAND) İSTASYONLAR

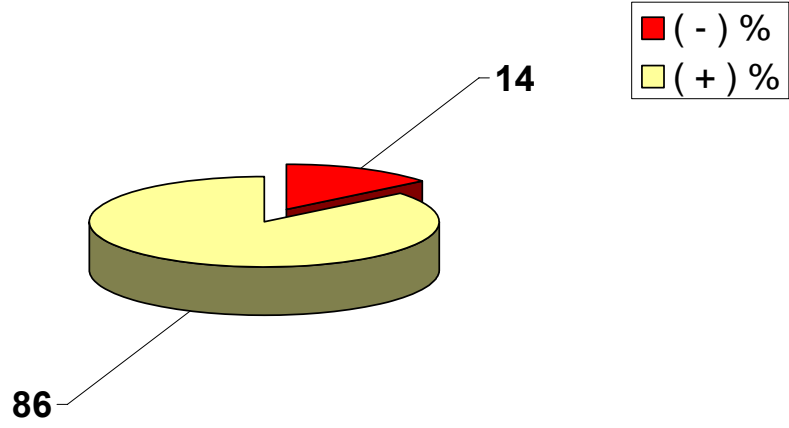
86

14

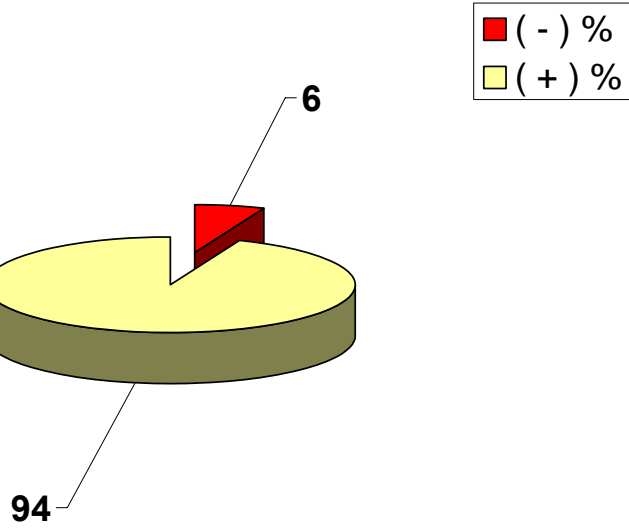


95	1	KISA PERİYOT (SHORT PERIOD) İSTASYONLAR	AKS	31	0	31	100	0	94	6
96	2		BNT	31	0	31	100	0		
97	3		BTMT	31	0	31	100	0		
98	4		BYBT	31	0	31	100	0		
99	5		DENT	31	0	31	100	0		
100	6		DIY	30	1	31	97	3		
101	7		DST	31	0	31	100	0		
102	8		ESKT	30	1	31	97	3		
103	9		EYL	0	31	31	0	100		
104	10		EZM	31	0	31	100	0		
105	11		GPA	31	0	31	100	0		
106	12		GUMT	31	0	31	100	0		
107	13		HKR	16	15	31	52	48		
108	14		HTY	31	0	31	100	0		
109	15		IZI	31	0	31	100	0		
110	16		IZM	31	0	31	100	0		
111	17		KAMT	31	0	31	100	0		
112	18		KHL	31	0	31	100	0		
113	19		KIZT	28	3	31	90	10		
114	20		MYA	31	0	31	100	0		
115	21		NIG	30	1	31	97	3		
116	22		ORLT	31	0	31	100	0		
117	23		SAFT	31	0	31	100	0		
118	24		TOKT	30	1	31	97	3		
119	25		TOS	31	0	31	100	0		
120	26		VANT	31	0	31	100	0		
121	27		YOZ	31	0	31	100	0		
							+	(-)		
2009 MART ORTALAMA %							88	12		

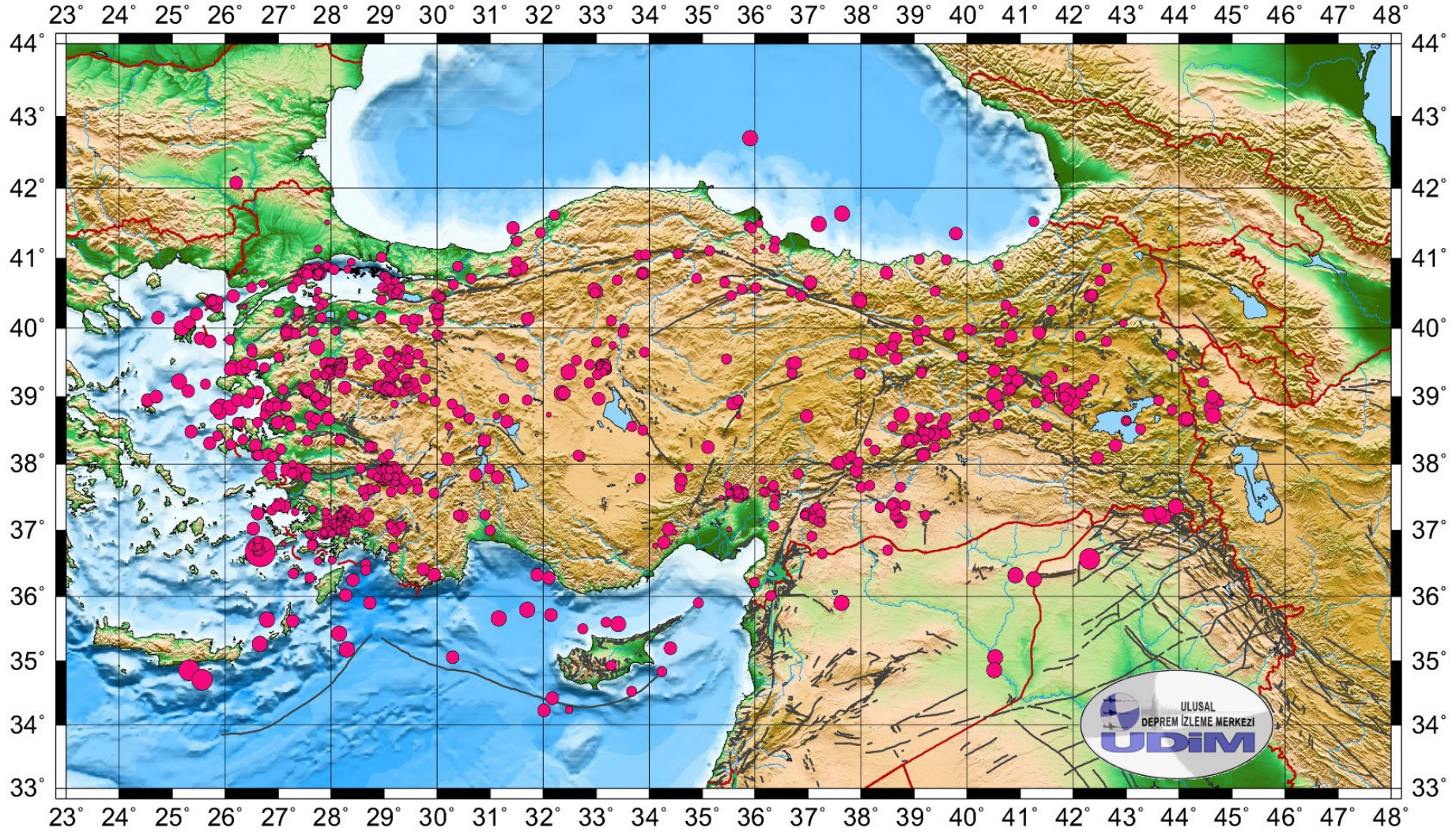
## 2009 MART AYI BROAD-BAND İSTASYONLARI VERİMLİLİK GRAFİĞİ



## 2009 MART AYI SHORT PERIOD İSTASYONLARI VERİMLİLİK GRAFİĞİ



## TÜRKİYE VE YAKIN ÇEVRESİ DEPREM ETKİNLİĞİ ( MART 2009 ) **Toplam: 932 Adet**



**TÜRKİYE DEPREM ETKİNLİĞİ ( 2009 YILI MART AYI )**

No	Tarih - Date			Zaman - Time			Koordinat - Coordinate			Derinlik - Depth		Magnitüd - Magnitude									
	Gün	Ay	Yıl	Saat	Dak.	San.	Enlem-K	Boylam-D	Ref	Km.	Ref	Ms	Ref	Mb	Ref	Md	Ref	MI	Ref	Mw	Ref
1	1	3	2009	0	8	17.7	37.75	29.34	R	12	R					3.1	R				
2	1	3	2009	0	46	1.9	38.85	25.91	R	2	R							3.9	R		
3	1	3	2009	0	57	15.7	37.83	28.99	R	6	R					3.3	R				
4	1	3	2009	0	59	4.1	37.80	28.96	R	2	R					3.1	R				
5	1	3	2009	1	11	33.1	40.83	27.58	R	4	R					3.1	R				
6	1	3	2009	1	12	32.6	40.85	27.52	R	4	R					2.5	R				
7	1	3	2009	1	22	25.3	40.84	27.57	R	4	R					3.4	R				
8	1	3	2009	2	16	31.7	40.83	27.53	R	6	R					2.8	R				
9	1	3	2009	2	42	28.8	37.23	36.94	R	2	R					2.5	R				
10	1	3	2009	2	47	18.9	39.31	27.98	R	9	R					2.9	R				
11	1	3	2009	2	50	16.1	36.25	28.41	R	63	R					3.3	R				
12	1	3	2009	3	3	47.4	40.82	27.58	R	7	R					2.9	R				
13	1	3	2009	3	5	52.8	37.84	29.13	R	6	R					2.8	R				
14	1	3	2009	3	11	10.8	39.32	29.18	R	5	R					3.1	R				
15	1	3	2009	3	14	47.8	39.32	29.12	R	5	R					2.8	R				
16	1	3	2009	3	26	13.9	37.16	28.17	R	8	R					3.4	R				
17	1	3	2009	5	21	53.5	37.88	29.16	R	9	R					2.6	R				
18	1	3	2009	5	36	21.9	39.23	29.08	R	7	R					2.5	R				
19	1	3	2009	6	13	30.2	37.87	29.01	R	9	R					3.3	R				
20	1	3	2009	6	18	5.0	37.85	28.95	R	4	R					2.9	R				

**TÜRKİYE DEPREM ETKİNLİĞİ ( 2009 YILI MART AYI )**

No	Tarih - Date			Zaman - Time			Koordinat - Coordinate			Derinlik - Depth		Magnitüd - Magnitude									
	Gün	Ay	Yıl	Saat	Dak.	San.	Enlem-K	Boylam-D	Ref	Km.	Ref	Ms	Ref	Mb	Ref	Md	Ref	MI	Ref	Mw	Ref
21	1	3	2009	6	23	13.2	35.27	26.65	R	81	R					3.6	R				
22	1	3	2009	6	27	46.9	37.77	29.04	R	16	R					2.6	R				
23	1	3	2009	6	31	38.8	39.22	29.41	R	11	R					2.6	R				
24	1	3	2009	6	36	6.5	39.91	39.06	R	12	R					2.5	R				
25	1	3	2009	6	51	26.6	37.83	29.13	R	5	R					2.5	R				
26	1	3	2009	6	58	1.1	37.85	28.99	R	5	R					2.9	R				
27	1	3	2009	6	58	27.6	40.83	27.57	R	6	R					2.8	R				
28	1	3	2009	6	59	1.2	37.83	29.12	R	16	R					2.7	R				
29	1	3	2009	7	2	23.9	39.26	29.42	R	4	R					2.5	R				
30	1	3	2009	7	55	19.0	37.14	28.17	R	12	R					2.6	R				
31	1	3	2009	8	8	0.9	37.84	29.09	R	22	R					2.4	R				
32	1	3	2009	8	14	48.0	37.58	29.14	R	6	R					2.5	R				
33	1	3	2009	8	32	31.0	39.10	27.09	R	5	R					2.7	R				
34	1	3	2009	9	17	57.0	37.00	28.24	R	11	R					2.7	R				
35	1	3	2009	9	34	26.6	37.83	28.97	R	5	R					2.5	R				
36	1	3	2009	9	40	17.4	37.85	29.12	R	8	R					2.6	R				
37	1	3	2009	9	40	45.8	39.05	27.56	R	16	R					2.7	R				
38	1	3	2009	10	2	26.8	37.82	29.04	R	11	R					2.4	R				
39	1	3	2009	10	17	2.4	40.42	30.03	R	3	R					2.4	R				
40	1	3	2009	10	28	1.9	39.44	28.18	R	7	R					2.6	R				

**TÜRKİYE DEPREM ETKİNLİĞİ ( 2009 YILI MART AYI )**

No	Tarih - Date			Zaman - Time			Koordinat - Coordinate			Derinlik - Depth		Magnitüd - Magnitude									
	Gün	Ay	Yıl	Saat	Dak.	San.	Enlem-K	Boylam-D	Ref	Km.	Ref	Ms	Ref	Mb	Ref	Md	Ref	MI	Ref	Mw	Ref
41	1	3	2009	10	32	20.4	39.99	33.53	R	6	R					2.5	R				
42	1	3	2009	10	40	51.6	37.83	29.10	R	6	R					2.6	R				
43	1	3	2009	10	44	46.0	37.82	29.14	R	9	R					2.5	R				
44	1	3	2009	10	59	30.8	37.82	29.10	R	14	R					2.5	R				
45	1	3	2009	11	4	26.0	37.73	29.21	R	15	R					2.4	R				
46	1	3	2009	11	6	45.2	37.88	29.06	R	5	R					2.6	R				
47	1	3	2009	11	11	31.8	39.42	28.16	R	12	R					2.5	R				
48	1	3	2009	11	13	57.4	37.80	29.08	R	13	R					2.8	R				
49	1	3	2009	11	16	32.6	39.13	27.47	R	18	R					2.7	R				
50	1	3	2009	12	37	22.9	37.83	29.29	R	6	R					2.6	R				
51	1	3	2009	12	39	1.1	37.77	29.18	R	4	R					2.7	R				
52	1	3	2009	12	47	40.6	39.18	25.63	R	5	R					2.8	R				
53	1	3	2009	13	1	51.6	37.86	29.10	R	5	R					2.7	R				
54	1	3	2009	13	8	17.2	39.07	27.54	R	12	R					3.0	R				
55	1	3	2009	13	13	12.1	37.82	29.08	R	7	R					2.9	R				
56	1	3	2009	13	49	30.5	37.83	29.12	R	4	R					2.4	R				
57	1	3	2009	14	2	49.9	39.40	29.31	R	10	R					2.1	R				
58	1	3	2009	14	4	54.1	40.82	27.60	R	14	R					2.6	R				
59	1	3	2009	14	28	1.0	39.42	33.22	R	4	R					2.0	R				
60	1	3	2009	14	41	34.6	37.81	29.11	R	6	R					2.5	R				

**TÜRKİYE DEPREM ETKİNLİĞİ ( 2009 YILI MART AYI )**

No	Tarih - Date			Zaman - Time			Koordinat - Coordinate			Derinlik - Depth		Magnitüd - Magnitude									
	Gün	Ay	Yıl	Saat	Dak.	San.	Enlem-K	Boylam-D	Ref	Km.	Ref	Ms	Ref	Mb	Ref	Md	Ref	MI	Ref	Mw	Ref
61	1	3	2009	14	50	55.5	39.07	29.11	R	7	R					2.5	R				
62	1	3	2009	14	53	27.9	37.83	29.09	R	6	R					2.6	R				
63	1	3	2009	15	4	21.4	40.45	30.08	R	5	R					2.0	R				
64	1	3	2009	15	4	48.5	40.85	27.58	R	4	R					2.7	R				
65	1	3	2009	16	8	53.7	36.82	34.28	R	8	R					3.0	R				
66	1	3	2009	16	21	9.9	37.84	29.06	R	8	R					2.6	R				
67	1	3	2009	17	25	36.4	39.08	25.30	R	30	R					3.4	R				
68	1	3	2009	17	48	18.5	37.85	29.10	R	6	R					2.7	R				
69	1	3	2009	17	49	14.5	38.95	31.70	R	3	R					2.8	R				
70	1	3	2009	18	9	46.4	37.77	29.18	R	3	R					2.9	R				
71	1	3	2009	18	17	53.1	37.81	29.06	R	12	R					2.7	R				
72	1	3	2009	18	28	51.1	37.84	29.02	R	10	R					2.7	R				
73	1	3	2009	18	37	13.3	37.86	29.16	R	4	R					2.7	R				
74	1	3	2009	18	44	39.7	37.80	29.01	R	5	R					2.8	R				
75	1	3	2009	18	54	32.4	37.77	29.00	R	4	R					2.7	R				
76	1	3	2009	18	56	24.5	37.91	28.94	R	2	R					2.6	R				
77	1	3	2009	19	3	33.4	37.86	29.06	R	2	R					2.8	R				
78	1	3	2009	19	14	38.8	37.82	29.13	R	5	R					2.5	R				
79	1	3	2009	19	15	31.6	37.84	29.17	R	8	R					2.6	R				
80	1	3	2009	19	27	35.4	37.87	29.05	R	12	R					3.0	R				

**TÜRKİYE DEPREM ETKİNLİĞİ ( 2009 YILI MART AYI )**

No	Tarih - Date			Zaman - Time			Koordinat - Coordinate			Derinlik - Depth		Magnitüd - Magnitude									
	Gün	Ay	Yıl	Saat	Dak.	San.	Enlem-K	Boylam-D	Ref	Km.	Ref	Ms	Ref	Mb	Ref	Md	Ref	MI	Ref	Mw	Ref
81	1	3	2009	19	39	22.8	37.89	29.10	R	24	R					2.7	R				
82	1	3	2009	19	46	3.5	37.83	29.07	R	6	R					2.9	R				
83	1	3	2009	20	2	31.2	37.76	29.18	R	7	R					2.7	R				
84	1	3	2009	20	4	7.9	37.82	29.15	R	4	R					2.6	R				
85	1	3	2009	20	14	45.7	37.84	29.08	R	6	R					2.8	R				
86	1	3	2009	20	23	36.0	37.77	29.13	R	13	R					2.9	R				
87	1	3	2009	20	53	27.6	36.57	42.31	R	8	R							4.0	R		
88	1	3	2009	21	11	35.9	37.77	29.14	R	5	R					3.1	R				
89	1	3	2009	21	16	52.0	37.76	29.20	R	16	R					2.8	R				
90	1	3	2009	21	26	16.5	37.63	28.69	R	13	R					2.8	R				
91	1	3	2009	21	40	2.7	40.84	27.56	R	17	R					2.7	R				
92	1	3	2009	21	46	59.9	37.85	29.11	R	3	R					2.4	R				
93	1	3	2009	21	48	37.2	37.79	29.03	R	25	R					2.8	R				
94	1	3	2009	22	4	50.2	37.81	29.08	R	7	R					2.6	R				
95	1	3	2009	22	9	0.2	37.81	29.09	R	22	R					2.4	R				
96	1	3	2009	22	12	30.8	37.28	28.38	R	6	R					2.0	R				
97	1	3	2009	22	12	55.0	37.83	29.19	R	6	R					2.2	R				
98	1	3	2009	22	25	17.7	37.78	29.16	R	3	R					2.9	R				
99	1	3	2009	22	29	56.4	37.88	29.03	R	5	R					2.8	R				
100	1	3	2009	22	33	7.3	37.37	27.12	R	5	R					3.1	R				



**TÜRKİYE DEPREM ETKİNLİĞİ ( 2009 YILI MART AYI )**

No	Tarih - Date			Zaman - Time			Koordinat - Coordinate			Derinlik - Depth		Magnitüd - Magnitude									
	Gün	Ay	Yıl	Saat	Dak.	San.	Enlem-K	Boylam-D	Ref	Km.	Ref	Ms	Ref	Mb	Ref	Md	Ref	MI	Ref	Mw	Ref
101	1	3	2009	22	43	29.8	38.56	41.51	R	5	R					2.8	R				
102	1	3	2009	22	46	46.4	37.83	29.06	R	8	R					2.7	R				
103	1	3	2009	23	7	35.0	37.01	28.22	R	8	R					2.4	R				
104	1	3	2009	23	14	51.4	37.82	29.09	R	16	R					2.8	R				
105	1	3	2009	23	25	17.1	37.86	29.00	R	5	R					2.6	R				
106	1	3	2009	23	37	31.9	38.07	30.20	R	6	R					3.0	R				
107	2	3	2009	0	4	7.6	37.08	29.10	R	26	R					2.4	R				
108	2	3	2009	0	5	6.6	37.16	28.29	R	5	R					2.4	R				
109	2	3	2009	0	10	21.9	39.10	29.10	R	5	R					3.4	R				
110	2	3	2009	0	41	23.7	37.89	29.10	R	5	R					2.6	R				
111	2	3	2009	0	55	15.2	37.86	28.77	R	10	R					2.8	R				
112	2	3	2009	0	58	14.3	40.00	25.18	R	5	R							3.7	R		
113	2	3	2009	1	1	43.2	36.02	28.27	R	11	R					3.0	R				
114	2	3	2009	2	10	30.0	37.91	29.09	R	9	R					2.5	R				
115	2	3	2009	2	37	49.2	37.28	27.32	R	20	R					2.1	R				
116	2	3	2009	3	8	35.0	40.15	27.82	R	12	R					2.8	R				
117	2	3	2009	3	30	53.2	37.92	29.10	R	7	R					2.8	R				
118	2	3	2009	4	17	27.8	40.08	25.32	R	32	R					3.4	R				
119	2	3	2009	4	17	57.9	37.16	28.59	R	8	R							3.5	R		
120	2	3	2009	4	26	14.6	40.24	40.86	R	28	R					2.5	R				

**TÜRKİYE DEPREM ETKİNLİĞİ ( 2009 YILI MART AYI )**

No	Tarih - Date			Zaman - Time			Koordinat - Coordinate			Derinlik - Depth		Magnitüd - Magnitude									
	Gün	Ay	Yıl	Saat	Dak.	San.	Enlem-K	Boylam-D	Ref	Km.	Ref	Ms	Ref	Mb	Ref	Md	Ref	MI	Ref	Mw	Ref
121	2	3	2009	4	36	50.2	37.90	29.05	R	6	R					2.8	R				
122	2	3	2009	4	38	21.8	37.81	29.05	R	11	R					2.7	R				
123	2	3	2009	4	45	16.3	37.72	29.17	R	10	R					2.8	R				
124	2	3	2009	4	52	30.0	38.35	27.55	R	5	R					2.9	R				
125	2	3	2009	5	23	31.9	37.93	27.40	R	5	R					2.7	R				
126	2	3	2009	5	24	8.5	40.46	36.87	R	18	R					2.8	R				
127	2	3	2009	6	10	57.8	37.75	29.01	R	17	R					2.6	R				
128	2	3	2009	7	2	44.4	37.84	29.05	R	9	R					2.6	R				
129	2	3	2009	7	17	46.4	37.80	28.87	R	5	R					2.4	R				
130	2	3	2009	7	48	8.6	37.82	29.10	R	13	R					2.6	R				
131	2	3	2009	8	33	40.7	37.85	29.09	R	3	R					2.5	R				
132	2	3	2009	9	12	14.2	39.34	29.18	R	6	R					2.9	R				
133	2	3	2009	10	10	30.5	39.15	29.07	R	25	R					2.5	R				
134	2	3	2009	11	21	53.5	37.82	29.11	R	8	R					2.7	R				
135	2	3	2009	11	29	22.4	37.82	29.08	R	5	R					2.7	R				
136	2	3	2009	11	33	39.1	37.77	28.97	R	7	R					2.8	R				
137	2	3	2009	11	39	24.2	37.81	29.11	R	7	R					2.6	R				
138	2	3	2009	11	43	15.1	37.81	29.13	R	5	R					2.7	R				
139	2	3	2009	11	48	39.6	37.81	29.11	R	6	R					3.2	R				
140	2	3	2009	11	57	7.2	37.80	29.04	R	16	R					3.1	R				

**TÜRKİYE DEPREM ETKİNLİĞİ ( 2009 YILI MART AYI )**

No	Tarih - Date			Zaman - Time			Koordinat - Coordinate			Derinlik - Depth		Magnitüd - Magnitude									
	Gün	Ay	Yıl	Saat	Dak.	San.	Enlem-K	Boylam-D	Ref	Km.	Ref	Ms	Ref	Mb	Ref	Md	Ref	MI	Ref	Mw	Ref
141	2	3	2009	12	34	23.6	37.83	29.05	R	16	R					2.9	R				
142	2	3	2009	12	48	33.9	37.81	29.15	R	5	R					3.0	R				
143	2	3	2009	12	52	44.8	37.82	29.11	R	5	R					3.1	R				
144	2	3	2009	13	0	55.4	37.82	29.08	R	8	R					2.6	R				
145	2	3	2009	13	27	11.9	37.86	28.98	R	5	R					2.6	R				
146	2	3	2009	13	36	42.8	39.81	42.63	R	18	R					2.9	R				
147	2	3	2009	14	14	32.3	40.18	30.01	R	22	R					2.5	R				
148	2	3	2009	14	17	29.6	37.79	29.26	R	8	R					2.7	R				
149	2	3	2009	15	6	2.7	37.84	29.07	R	6	R					2.7	R				
150	2	3	2009	15	6	2.7	37.84	29.07	R	6	R					2.7	R				
151	2	3	2009	15	7	14.6	37.81	29.06	R	8	R					2.7	R				
152	2	3	2009	15	12	57.9	37.82	29.10	R	6	R					2.6	R				
153	2	3	2009	15	18	27.6	39.17	29.46	R	12	R					2.6	R				
154	2	3	2009	15	48	53.1	37.81	29.13	R	6	R					3.1	R				
155	2	3	2009	16	8	17.8	37.81	29.14	R	11	R					2.7	R				
156	2	3	2009	16	12	7.5	37.83	29.13	R	8	R					2.6	R				
157	2	3	2009	16	14	24.5	37.72	29.62	R	8	R					2.6	R				
158	2	3	2009	16	26	24.4	39.14	28.91	R	5	R					3.1	R				
159	2	3	2009	16	50	43.2	36.92	27.66	R	22	R					2.0	R				
160	2	3	2009	17	24	32.2	37.84	29.04	R	6	R					3.0	R				

**TÜRKİYE DEPREM ETKİNLİĞİ ( 2009 YILI MART AYI )**

No	Tarih - Date			Zaman - Time			Koordinat - Coordinate			Derinlik - Depth		Magnitüd - Magnitude									
	Gün	Ay	Yıl	Saat	Dak.	San.	Enlem-K	Boylam-D	Ref	Km.	Ref	Ms	Ref	Mb	Ref	Md	Ref	MI	Ref	Mw	Ref
161	2	3	2009	20	0	23.6	39.15	28.94	R	5	R					<b>3.0</b>	R				
162	2	3	2009	20	32	54.9	37.76	29.33	R	5	R					<b>2.7</b>	R				
163	2	3	2009	20	44	11.2	40.07	42.95	R	5	R					<b>2.3</b>	R				
164	2	3	2009	21	45	5.0	38.76	25.90	R	5	R					<b>3.3</b>	R				
165	2	3	2009	22	1	13.0	36.79	26.77	R	36	R					<b>3.1</b>	R				
166	2	3	2009	22	2	6.8	36.68	26.66	N	8	N			<b>4.6</b>	N			<b>4.2</b>	R	<b>4.1</b>	R
167	2	3	2009	22	12	59.1	39.97	40.08	R	15	R					<b>2.9</b>	R				
168	2	3	2009	22	31	52.7	38.59	40.59	R	10	R					<b>2.6</b>	R				
169	2	3	2009	22	46	10.9	37.25	28.68	R	3	R					<b>3.2</b>	R				
170	2	3	2009	23	5	11.3	38.73	26.75	R	5	R					<b>2.5</b>	R				
171	2	3	2009	23	8	58.1	37.83	29.07	R	5	R					<b>3.1</b>	R				
172	2	3	2009	23	23	22.4	36.74	26.59	R	8	R					<b>2.4</b>	R				
173	2	3	2009	23	46	23.3	36.76	26.63	R	4	R					<b>2.4</b>	R				
174	3	3	2009	0	4	34.3	37.92	29.00	R	9	R					<b>2.5</b>	R				
175	3	3	2009	0	52	21.8	38.72	31.12	R	6	R					<b>2.3</b>	R				
176	3	3	2009	0	55	10.6	36.76	26.54	R	6	R					<b>2.5</b>	R				
177	3	3	2009	1	0	50.2	38.69	39.28	R	17	R					<b>2.5</b>	R				
178	3	3	2009	1	12	56.4	37.14	28.29	R	21	R					<b>2.0</b>	R				
179	3	3	2009	2	1	7.9	39.02	41.92	R	5	R					<b>3.3</b>	R				
180	3	3	2009	2	4	16.5	38.91	41.30	R	14	R					<b>2.8</b>	R				

**TÜRKİYE DEPREM ETKİNLİĞİ ( 2009 YILI MART AYI )**

No	Tarih - Date			Zaman - Time			Koordinat - Coordinate			Derinlik - Depth		Magnitüd - Magnitude									
	Gün	Ay	Yıl	Saat	Dak.	San.	Enlem-K	Boylam-D	Ref	Km.	Ref	Ms	Ref	Mb	Ref	Md	Ref	MI	Ref	Mw	Ref
181	3	3	2009	2	23	53.5	36.70	26.63	R	32	R					3.2	R				
182	3	3	2009	3	15	58.7	39.01	40.51	R	2	R					3.6	R				
183	3	3	2009	4	6	59.0	37.80	28.95	R	10	R					2.9	R				
184	3	3	2009	4	42	16.3	37.82	29.13	R	6	R					2.8	R				
185	3	3	2009	5	16	9.4	37.63	29.34	R	4	R					2.6	R				
186	3	3	2009	5	41	39.6	37.26	28.35	R	5	R					3.3	R				
187	3	3	2009	6	58	18.6	37.15	28.59	R	11	R					2.7	R				
188	3	3	2009	7	8	3.3	40.53	36.68	R	5	R					2.9	R				
189	3	3	2009	7	13	53.4	37.25	28.22	R	13	R					2.0	R				
190	3	3	2009	7	19	39.2	36.71	26.62	R	9	R					2.9	R				
191	3	3	2009	7	21	55.4	38.64	39.15	R	5	R					2.5	R				
192	3	3	2009	7	47	45.6	35.79	31.70	R	34	R							3.7	R		
193	3	3	2009	7	55	28.0	37.54	35.78	R	18	R					2.5	R				
194	3	3	2009	8	15	58.5	37.14	28.57	R	12	R					2.3	R				
195	3	3	2009	8	51	23.2	37.01	28.17	R	3	R					2.4	R				
196	3	3	2009	9	24	18.9	40.23	30.02	R	6	R					2.6	R				
197	3	3	2009	9	33	3.8	36.81	26.63	R	6	R					2.6	R				
198	3	3	2009	9	49	37.2	37.63	28.86	R	24	R					2.3	R				
199	3	3	2009	9	54	7.7	37.58	35.78	R	14	R					2.5	R				
200	3	3	2009	10	22	33.3	40.85	28.05	R	10	R					2.7	R				

**TÜRKİYE DEPREM ETKİNLİĞİ ( 2009 YILI MART AYI )**

No	Tarih - Date			Zaman - Time			Koordinat - Coordinate			Derinlik - Depth		Magnitüd - Magnitude									
	Gün	Ay	Yıl	Saat	Dak.	San.	Enlem-K	Boylam-D	Ref	Km.	Ref	Ms	Ref	Mb	Ref	Md	Ref	MI	Ref	Mw	Ref
201	3	3	2009	10	29	35.3	40.95	28.38	R	13	R					2.1	R				
202	3	3	2009	10	47	57.7	39.72	27.74	R	13	R							3.6	R		
203	3	3	2009	11	4	16.1	37.10	28.30	R	21	R					2.2	R				
204	3	3	2009	11	19	39.9	39.45	28.16	R	11	R					2.7	R				
205	3	3	2009	11	45	28.8	38.38	39.21	R	11	R					2.2	R				
206	3	3	2009	12	43	11.1	37.28	27.90	R	20	R					2.2	R				
207	3	3	2009	12	44	36.6	39.33	27.70	R	23	R					2.7	R				
208	3	3	2009	13	10	30.0	39.47	28.19	R	6	R					2.9	R				
209	3	3	2009	13	19	46.0	37.77	29.06	R	20	R					2.7	R				
210	3	3	2009	13	46	12.4	36.86	26.61	R	5	R					2.3	R				
211	3	3	2009	13	49	53.2	39.49	29.45	R	14	R					2.5	R				
212	3	3	2009	13	57	18.6	39.09	27.51	R	5	R					2.8	R				
213	3	3	2009	13	58	5.5	37.82	29.08	R	13	R					2.7	R				
214	3	3	2009	14	2	9.4	39.51	28.22	R	8	R					2.6	R				
215	3	3	2009	14	18	13.8	34.53	33.67	R	32	R					2.9	R				
216	3	3	2009	14	39	36.2	37.22	28.21	R	18	R					1.6	R				
217	3	3	2009	15	25	28.3	39.97	28.11	R	10	R					2.4	R				
218	3	3	2009	16	11	57.7	38.01	38.24	R	19	R					2.7	R				
219	3	3	2009	16	15	55.0	38.12	37.81	R	4	R					2.9	R				
220	3	3	2009	17	20	22.1	35.64	26.79	R	50	R					3.7	R				

**TÜRKİYE DEPREM ETKİNLİĞİ ( 2009 YILI MART AYI )**

No	Tarih - Date			Zaman - Time			Koordinat - Coordinate			Derinlik - Depth		Magnitüd - Magnitude									
	Gün	Ay	Yıl	Saat	Dak.	San.	Enlem-K	Boylam-D	Ref	Km.	Ref	Ms	Ref	Mb	Ref	Md	Ref	MI	Ref	Mw	Ref
221	3	3	2009	17	40	22.1	39.54	29.34	R	12	R					2.2	R				
222	3	3	2009	18	20	29.8	38.56	33.68	R	13	R					2.7	R				
223	3	3	2009	18	26	54.9	37.83	29.26	R	3	R					2.5	R				
224	3	3	2009	18	36	45.6	37.23	28.34	R	2	R					1.9	R				
225	3	3	2009	19	8	59.1	38.50	33.88	R	17	R					2.7	R				
226	3	3	2009	20	45	5.2	40.76	27.73	R	5	R					2.7	R				
227	3	3	2009	21	47	27.0	40.85	27.80	R	2	R					2.5	R				
228	3	3	2009	21	49	13.3	40.80	27.78	R	9	R					2.8	R				
229	3	3	2009	21	49	56.6	39.63	37.88	R	5	R					2.6	R				
230	3	3	2009	22	25	28.1	36.55	28.02	R	10	R					2.2	R				
231	3	3	2009	22	55	44.8	37.62	28.73	R	22	R					2.6	R				
232	4	3	2009	0	49	10.9	38.95	24.54	R	32	R							3.4	R		
233	4	3	2009	1	48	19.0	35.18	28.30	R	8	R							3.6	R		
234	4	3	2009	3	8	29.7	35.90	37.63	R	5	R					3.9	R				
235	4	3	2009	4	30	17.8	37.56	29.94	R	5	R					2.8	R				
236	4	3	2009	4	38	26.7	39.11	29.11	R	6	R					2.6	R				
237	4	3	2009	5	33	20.8	38.97	33.05	R	8	R					3.1	R				
238	4	3	2009	5	57	34.7	37.81	29.15	R	21	R					2.7	R				
239	4	3	2009	7	30	26.5	40.64	26.71	R	20	R					2.3	R				
240	4	3	2009	8	5	29.6	41.05	33.81	R	5	R					2.6	R				

**TÜRKİYE DEPREM ETKİNLİĞİ ( 2009 YILI MART AYI )**

No	Tarih - Date			Zaman - Time			Koordinat - Coordinate			Derinlik - Depth		Magnitüd - Magnitude									
	Gün	Ay	Yıl	Saat	Dak.	San.	Enlem-K	Boylam-D	Ref	Km.	Ref	Ms	Ref	Mb	Ref	Md	Ref	MI	Ref	Mw	Ref
241	4	3	2009	8	21	17.4	37.80	29.14	R	8	R					2.8	R				
242	4	3	2009	8	29	29.1	40.88	27.72	R	13	R					2.6	R				
243	4	3	2009	8	33	3.3	37.78	29.12	R	12	R					2.8	R				
244	4	3	2009	9	53	42.8	37.24	28.22	R	7	R					2.4	R				
245	4	3	2009	10	4	50.4	37.12	28.46	R	2	R					2.0	R				
246	4	3	2009	10	26	34.2	40.54	27.75	R	18	R					2.0	R				
247	4	3	2009	10	52	18.3	37.59	36.15	R	19	R					2.1	R				
248	4	3	2009	11	35	2.3	39.46	28.13	R	12	R					3.1	R				
249	4	3	2009	12	4	36.4	40.75	29.00	R	6	R					2.6	R				
250	4	3	2009	12	44	14.5	41.46	35.88	R	5	R					2.9	R				
251	4	3	2009	15	41	22.5	37.25	28.22	R	7	R					2.0	R				
252	4	3	2009	15	53	41.4	36.70	38.50	R	5	R					2.8	R				
253	4	3	2009	16	25	37.6	37.89	26.81	R	3	R					2.5	R				
254	4	3	2009	16	27	10.4	39.43	28.14	R	17	R					2.5	R				
255	4	3	2009	16	34	27.1	38.48	25.36	R	7	R					3.4	R				
256	4	3	2009	16	52	25.8	37.89	26.79	R	4	R					2.5	R				
257	4	3	2009	17	10	4.7	37.07	29.32	R	8	R					2.7	R				
258	4	3	2009	17	23	2.0	39.26	40.75	R	8	R					2.8	R				
259	4	3	2009	20	6	42.6	38.13	26.60	R	10	R					2.7	R				
260	4	3	2009	21	7	27.8	37.56	35.78	R	15	R					2.7	R				



**TÜRKİYE DEPREM ETKİNLİĞİ ( 2009 YILI MART AYI )**

No	Tarih - Date			Zaman - Time			Koordinat - Coordinate			Derinlik - Depth		Magnitüd - Magnitude									
	Gün	Ay	Yıl	Saat	Dak.	San.	Enlem-K	Boylam-D	Ref	Km.	Ref	Ms	Ref	Mb	Ref	Md	Ref	MI	Ref	Mw	Ref
261	4	3	2009	21	31	59.6	39.14	29.10	R	5	R					3.3	R				
262	4	3	2009	22	9	30.2	40.74	29.03	R	5	R					2.9	R				
263	4	3	2009	22	23	43.1	37.93	27.45	R	8	R					2.8	R				
264	4	3	2009	22	55	27.4	37.02	34.37	R	9	R					3.4	R				
265	4	3	2009	22	57	47.5	37.36	38.65	R	9	R					2.9	R				
266	4	3	2009	22	58	14.8	39.70	26.50	R	6	R					2.9	R				
267	4	3	2009	23	23	8.1	38.22	27.05	R	6	R					2.5	R				
268	4	3	2009	23	47	10.0	38.38	39.06	R	10	R					2.4	R				
269	5	3	2009	1	0	51.8	40.86	42.64	R	6	R					2.6	R				
270	5	3	2009	1	24	22.8	39.55	35.46	R	7	R					2.6	R				
271	5	3	2009	2	49	58.8	40.75	27.74	R	13	R					2.4	R				
272	5	3	2009	4	7	18.1	39.43	33.20	R	8	R					2.2	R				
273	5	3	2009	8	26	22.1	36.93	27.59	R	14	R					2.1	R				
274	5	3	2009	10	14	38.5	37.87	29.18	R	6	R					3.0	R				
275	5	3	2009	10	28	12.8	37.88	29.14	R	4	R					2.8	R				
276	5	3	2009	12	40	56.6	37.72	29.43	R	18	R					2.7	R				
277	5	3	2009	14	0	5.9	41.07	34.55	R	5	R					2.8	R				
278	5	3	2009	14	5	36.5	41.53	41.26	R	14	R					2.9	R				
279	5	3	2009	14	50	21.2	39.50	28.16	R	12	R					2.5	R				
280	5	3	2009	16	1	45.7	34.84	34.24	R	8	R					2.9	R				

**TÜRKİYE DEPREM ETKİNLİĞİ ( 2009 YILI MART AYI )**

No	Tarih - Date			Zaman - Time			Koordinat - Coordinate			Derinlik - Depth		Magnitüd - Magnitude									
	Gün	Ay	Yıl	Saat	Dak.	San.	Enlem-K	Boylam-D	Ref	Km.	Ref	Ms	Ref	Mb	Ref	Md	Ref	MI	Ref	Mw	Ref
281	5	3	2009	16	11	11.2	37.13	38.75	R	11	R					3.1	R				
282	5	3	2009	17	29	1.2	39.11	28.98	R	5	R					2.6	R				
283	5	3	2009	17	40	19.6	39.85	25.53	R	5	R					3.3	R				
284	5	3	2009	18	34	53.0	38.26	28.78	R	8	R					2.6	R				
285	5	3	2009	23	49	34.4	39.44	33.09	R	5	R					2.9	R				
286	6	3	2009	1	53	42.2	40.90	27.92	R	23	R					2.3	R				
287	6	3	2009	3	41	0.0	40.40	25.90	R	25	R					2.4	R				
288	6	3	2009	4	38	35.2	38.91	42.02	R	17	R					3.1	R				
289	6	3	2009	5	2	5.4	37.31	26.88	R	8	R					2.7	R				
290	6	3	2009	5	4	55.4	40.79	27.46	R	11	R					2.6	R				
291	6	3	2009	8	11	54.8	40.64	37.04	R	8	R					3.0	R				
292	6	3	2009	8	44	35.4	39.09	29.09	R	6	R					2.6	R				
293	6	3	2009	8	56	42.7	38.33	38.85	R	6	R					2.7	R				
294	6	3	2009	9	32	9.4	40.87	31.59	R	2	R					3.1	R				
295	6	3	2009	9	57	54.9	40.66	37.05	R	5	R					3.2	R				
296	6	3	2009	12	9	24.6	37.49	36.37	R	5	R					2.4	R				
297	6	3	2009	12	26	41.2	37.24	36.94	R	5	R					2.2	R				
298	6	3	2009	12	56	7.1	41.50	36.08	R	15	R					2.3	R				
299	6	3	2009	13	0	14.0	39.08	29.38	R	5	R					2.5	R				
300	6	3	2009	13	47	54.6	39.44	28.18	R	13	R					2.4	R				

**TÜRKİYE DEPREM ETKİNLİĞİ ( 2009 YILI MART AYI )**

No	Tarih - Date			Zaman - Time			Koordinat - Coordinate			Derinlik - Depth		Magnitüd - Magnitude									
	Gün	Ay	Yıl	Saat	Dak.	San.	Enlem-K	Boylam-D	Ref	Km.	Ref	Ms	Ref	Mb	Ref	Md	Ref	MI	Ref	Mw	Ref
301	6	3	2009	13	55	47.5	40.58	36.01	R	6	R					2.6	R				
302	6	3	2009	14	2	23.5	40.19	28.41	R	8	R					2.7	R				
303	6	3	2009	14	19	53.3	40.99	39.10	R	7	R					2.7	R				
304	6	3	2009	15	12	13.1	40.47	29.20	R	2	R					2.3	R				
305	6	3	2009	15	55	42.4	40.30	27.78	R	6	R					2.4	R				
306	6	3	2009	16	11	36.0	39.44	28.17	R	10	R					2.7	R				
307	6	3	2009	16	15	8.0	37.81	29.21	R	15	R					2.4	R				
308	6	3	2009	16	16	0.0	37.85	29.09	R	3	R					2.5	R				
309	6	3	2009	16	17	56.1	37.90	29.00	R	13	R					2.7	R				
310	6	3	2009	16	19	4.0	37.84	29.03	R	2	R					2.8	R				
311	6	3	2009	17	0	14.4	35.57	33.42	R	21	R					3.7	R				
312	6	3	2009	17	16	47.5	38.86	27.15	R	17	R					2.7	R				
313	6	3	2009	17	19	48.6	37.26	26.61	R	2	R					3.4	R				
314	6	3	2009	17	37	33.4	37.37	26.97	R	7	R					2.7	R				
315	6	3	2009	18	12	42.9	37.23	30.40	R	28	R					2.7	R				
316	6	3	2009	18	52	40.9	37.83	29.06	R	5	R					2.8	R				
317	6	3	2009	18	57	23.8	37.82	29.12	R	7	R					2.4	R				
318	6	3	2009	19	30	54.6	35.60	33.19	R	4	R					2.5	R				
319	6	3	2009	20	0	29.9	38.00	27.27	R	4	R					2.3	R				
320	6	3	2009	21	41	9.4	37.81	29.08	R	9	R					2.2	R				

**TÜRKİYE DEPREM ETKİNLİĞİ ( 2009 YILI MART AYI )**

No	Tarih - Date			Zaman - Time			Koordinat - Coordinate			Derinlik - Depth		Magnitüd - Magnitude									
	Gün	Ay	Yıl	Saat	Dak.	San.	Enlem-K	Boylam-D	Ref	Km.	Ref	Ms	Ref	Mb	Ref	Md	Ref	MI	Ref	Mw	Ref
321	6	3	2009	22	19	33.2	34.23	32.02	R	43	R							<b>3.0</b>	R		
322	6	3	2009	22	46	58.2	37.76	36.14	R	10	R					<b>2.3</b>	R				
323	6	3	2009	23	48	48.5	40.64	29.14	R	6	R					<b>2.8</b>	R				
324	7	3	2009	0	54	35.0	34.42	32.17	R	34	R					<b>3.3</b>	R				
325	7	3	2009	2	7	33.8	37.21	28.47	R	8	R					<b>2.0</b>	R				
326	7	3	2009	3	9	59.4	38.83	44.61	R	5	R					<b>3.5</b>	R				
327	7	3	2009	5	25	0.6	35.43	28.15	R	32	R					<b>3.7</b>	R				
328	7	3	2009	7	1	44.6	39.58	29.26	R	15	R					<b>2.3</b>	R				
329	7	3	2009	7	18	58.3	38.09	28.99	R	11	R					<b>2.7</b>	R				
330	7	3	2009	7	38	47.7	36.65	37.27	R	13	R					<b>2.6</b>	R				
331	7	3	2009	8	25	46.5	38.69	27.92	R	5	R					<b>3.2</b>	R				
332	7	3	2009	8	51	28.7	38.67	27.95	R	7	R					<b>3.0</b>	R				
333	7	3	2009	9	17	40.4	39.57	29.24	R	14	R					<b>2.3</b>	R				
334	7	3	2009	9	32	54.5	39.49	29.75	R	16	R					<b>2.1</b>	R				
335	7	3	2009	9	35	17.5	39.68	29.43	R	5	R					<b>2.5</b>	R				
336	7	3	2009	11	13	57.0	37.08	27.97	R	8	R					<b>2.2</b>	R				
337	7	3	2009	11	48	18.8	39.69	29.48	R	14	R					<b>2.3</b>	R				
338	7	3	2009	11	50	8.7	37.03	27.94	R	5	R					<b>2.4</b>	R				
339	7	3	2009	12	5	48.8	40.66	35.43	R	12	R					<b>2.5</b>	R				
340	7	3	2009	12	31	18.7	38.37	38.94	R	11	R					<b>2.5</b>	R				

**TÜRKİYE DEPREM ETKİNLİĞİ ( 2009 YILI MART AYI )**

No	Tarih - Date			Zaman - Time			Koordinat - Coordinate			Derinlik - Depth		Magnitüd - Magnitude									
	Gün	Ay	Yıl	Saat	Dak.	San.	Enlem-K	Boylam-D	Ref	Km.	Ref	Ms	Ref	Mb	Ref	Md	Ref	MI	Ref	Mw	Ref
341	7	3	2009	13	29	47.1	37.88	27.53	R	4	R					2.8	R				
342	7	3	2009	13	37	15.3	37.21	28.22	R	19	R					2.1	R				
343	7	3	2009	13	41	40.3	37.51	28.65	R	16	R					2.4	R				
344	7	3	2009	13	41	56.3	38.42	25.86	R	6	R					2.8	R				
345	7	3	2009	14	13	37.1	39.43	28.18	R	5	R					2.6	R				
346	7	3	2009	14	18	48.1	37.22	28.71	R	10	R					2.7	R				
347	7	3	2009	14	28	58.6	37.26	28.24	R	12	R					1.9	R				
348	7	3	2009	14	30	39.9	36.98	28.29	R	23	R					1.8	R				
349	7	3	2009	14	52	8.9	40.16	30.00	R	15	R					2.5	R				
350	7	3	2009	15	14	27.5	39.61	43.87	R	8	R					2.8	R				
351	7	3	2009	15	51	35.2	39.41	28.09	R	18	R					2.8	R				
352	7	3	2009	16	9	12.5	38.64	43.01	R	13	R					2.3	R				
353	7	3	2009	16	9	55.1	38.36	28.17	R	10	R					2.7	R				
354	7	3	2009	16	22	43.3	38.63	31.32	R	5	R					3.0	R				
355	7	3	2009	18	5	47.9	39.88	42.13	R	8	R					2.9	R				
356	7	3	2009	19	44	10.6	37.93	27.40	R	5	R					2.7	R				
357	7	3	2009	19	46	13.4	39.82	39.08	R	10	R					2.8	R				
358	7	3	2009	21	1	41.8	35.62	27.27	R	10	R					3.3	R				
359	7	3	2009	21	37	6.7	39.11	29.07	R	5	R					2.8	R				
360	7	3	2009	21	50	15.3	39.15	29.11	R	3	R					3.2	R				

**TÜRKİYE DEPREM ETKİNLİĞİ ( 2009 YILI MART AYI )**

No	Tarih - Date			Zaman - Time			Koordinat - Coordinate			Derinlik - Depth		Magnitüd - Magnitude									
	Gün	Ay	Yıl	Saat	Dak.	San.	Enlem-K	Boylam-D	Ref	Km.	Ref	Ms	Ref	Mb	Ref	Md	Ref	MI	Ref	Mw	Ref
361	7	3	2009	22	14	55.6	39.55	29.46	R	14	R					2.8	R				
362	7	3	2009	22	26	6.9	40.46	26.15	R	12	R					3.0	R				
363	7	3	2009	22	43	50.6	37.00	31.00	R	89	R					2.9	R				
364	8	3	2009	0	3	37.2	37.57	35.67	R	4	R					2.5	R				
365	8	3	2009	1	16	18.6	40.17	28.94	R	3	R					2.9	R				
366	8	3	2009	3	4	44.2	39.65	33.91	R	9	R					2.8	R				
367	8	3	2009	5	39	20.3	37.21	43.65	R	7	R					3.6	R				
368	8	3	2009	7	6	16.5	39.16	42.28	R	10	R					2.9	R				
369	8	3	2009	7	45	34.7	40.56	35.75	R	8	R					2.8	R				
370	8	3	2009	8	47	4.0	41.11	36.00	R	4	R					1.6	R				
371	8	3	2009	9	15	49.2	37.24	28.21	R	14	R					2.4	R				
372	8	3	2009	10	56	7.5	37.65	34.58	R	5	R					2.7	R				
373	8	3	2009	11	29	3.4	36.96	27.58	R	17	R					2.4	R				
374	8	3	2009	12	25	16.4	39.46	28.16	R	8	R					2.8	R				
375	8	3	2009	14	49	10.3	37.30	28.22	R	15	R					2.2	R				
376	8	3	2009	15	11	37.4	39.46	28.15	R	11	R					2.9	R				
377	8	3	2009	16	3	9.8	39.43	28.13	R	9	R					2.8	R				
378	8	3	2009	16	10	18.1	38.93	27.89	R	5	R					2.6	R				
379	8	3	2009	19	50	26.8	40.80	27.49	R	11	R					2.7	R				
380	8	3	2009	20	31	37.5	39.39	33.20	R	5	R					2.7	R				

**TÜRKİYE DEPREM ETKİNLİĞİ ( 2009 YILI MART AYI )**

No	Tarih - Date			Zaman - Time			Koordinat - Coordinate			Derinlik - Depth		Magnitüd - Magnitude									
	Gün	Ay	Yıl	Saat	Dak.	San.	Enlem-K	Boylam-D	Ref	Km.	Ref	Ms	Ref	Mb	Ref	Md	Ref	MI	Ref	Mw	Ref
381	8	3	2009	20	38	31.5	39.10	29.10	R	9	R					3.0	R				
382	8	3	2009	20	55	57.4	37.06	28.21	R	2	R					2.6	R				
383	8	3	2009	21	4	59.4	40.57	29.03	R	2	R					1.9	R				
384	8	3	2009	21	40	19.2	39.42	26.15	R	16	R					3.6	R	3.6	R		
385	8	3	2009	22	37	4.5	39.16	29.46	R	4	R					2.8	R				
386	8	3	2009	23	9	41.0	37.90	29.09	R	7	R					2.9	R				
387	8	3	2009	23	12	19.8	36.80	27.11	R	16	R					1.9	R				
388	8	3	2009	23	15	12.1	37.81	29.08	R	6	R					2.6	R				
389	9	3	2009	0	2	29.3	40.53	33.01	R	5	R					3.2	R				
390	9	3	2009	0	11	31.3	37.87	29.17	R	12	R					2.5	R				
391	9	3	2009	0	24	41.6	38.95	26.24	R	14	R					3.2	R				
392	9	3	2009	1	8	3.4	37.65	36.33	R	10	R					2.8	R				
393	9	3	2009	1	42	50.6	40.68	29.21	R	10	R					2.3	R				
394	9	3	2009	1	44	51.6	39.41	26.40	R	5	R					2.9	R				
395	9	3	2009	1	49	19.3	35.90	28.73	R	28	R					3.0	R				
396	9	3	2009	2	19	41.9	40.05	40.71	R	4	R					2.4	R				
397	9	3	2009	2	21	11.0	37.77	29.07	R	5	R					2.6	R				
398	9	3	2009	2	23	13.8	40.13	31.71	R	3	R					3.0	R				
399	9	3	2009	3	44	23.2	36.54	27.75	R	5	R					2.3	R				
400	9	3	2009	4	45	9.9	40.26	41.59	R	13	R					2.6	R				

**TÜRKİYE DEPREM ETKİNLİĞİ ( 2009 YILI MART AYI )**

No	Tarih - Date			Zaman - Time			Koordinat - Coordinate			Derinlik - Depth		Magnitüd - Magnitude									
	Gün	Ay	Yıl	Saat	Dak.	San.	Enlem-K	Boylam-D	Ref	Km.	Ref	Ms	Ref	Mb	Ref	Md	Ref	MI	Ref	Mw	Ref
401	9	3	2009	6	5	47.9	40.41	28.95	R	12	R					2.5	R				
402	9	3	2009	6	26	17.9	39.46	28.51	R	5	R					2.7	R				
403	9	3	2009	6	38	25.0	38.69	27.69	R	3	R					2.8	R				
404	9	3	2009	8	24	38.7	39.47	28.98	R	6	R					2.8	R				
405	9	3	2009	10	13	49.2	36.33	31.89	R	32	R					3.4	R				
406	9	3	2009	11	36	17.4	39.46	28.17	R	13	R					2.8	R				
407	9	3	2009	12	0	38.8	39.41	28.17	R	11	R					2.5	R				
408	9	3	2009	12	43	36.2	39.43	28.21	R	16	R					2.5	R				
409	9	3	2009	13	42	38.7	37.20	38.68	R	10	R					2.6	R				
410	9	3	2009	14	13	11.2	36.96	28.01	R	8	R					2.3	R				
411	9	3	2009	15	11	3.2	40.68	27.36	R	5	R					2.8	R				
412	9	3	2009	15	50	26.9	39.80	33.01	R	9	R					2.9	R				
413	9	3	2009	16	2	6.7	37.90	37.91	R	5	R					3.0	R				
414	9	3	2009	16	59	5.9	37.91	29.21	R	8	R					3.0	R				
415	9	3	2009	18	24	14.5	37.68	36.35	R	3	R					2.6	R				
416	9	3	2009	19	36	16.8	37.36	43.94	R	7	R					3.9	R				
417	9	3	2009	20	42	30.3	39.05	32.35	R	5	R					3.9	R	3.7	R		
418	9	3	2009	21	43	27.8	38.70	40.14	R	2	R					2.9	R				
419	9	3	2009	22	17	40.3	38.57	27.64	R	7	R					2.8	R				
420	10	3	2009	0	24	18.7	38.26	28.72	R	17	R					2.8	R				



**TÜRKİYE DEPREM ETKİNLİĞİ ( 2009 YILI MART AYI )**

No	Tarih - Date			Zaman - Time			Koordinat - Coordinate			Derinlik - Depth		Magnitüd - Magnitude									
	Gün	Ay	Yıl	Saat	Dak.	San.	Enlem-K	Boylam-D	Ref	Km.	Ref	Ms	Ref	Mb	Ref	Md	Ref	MI	Ref	Mw	Ref
421	10	3	2009	0	39	48.0	40.69	33.40	R	10	R					2.8	R				
422	10	3	2009	4	32	42.9	38.72	44.65	R	5	R					3.5	R				
423	10	3	2009	5	6	57.9	37.10	28.20	R	5	R					3.0	R				
424	10	3	2009	6	22	56.7	38.80	43.87	R	2	R					2.9	R				
425	10	3	2009	7	21	48.8	36.21	35.99	R	9	R					2.9	R				
426	10	3	2009	8	14	46.2	37.13	28.16	R	16	R					2.3	R				
427	10	3	2009	10	13	21.1	38.94	27.76	R	14	R							3.6	R		
428	10	3	2009	10	21	38.4	39.10	27.55	R	8	R					2.7	R				
429	10	3	2009	10	41	51.9	38.97	27.76	R	7	R					3.0	R				
430	10	3	2009	11	35	59.9	35.66	31.16	R	70	R							3.5	R		
431	10	3	2009	11	48	39.5	38.99	41.84	R	21	R					2.9	R				
432	10	3	2009	12	53	30.4	37.07	36.35	R	23	R					2.6	R				
433	10	3	2009	13	13	1.5	37.21	43.70	R	5	R					3.9	R				
434	10	3	2009	13	47	14.1	39.83	26.10	R	2	R					2.8	R				
435	10	3	2009	14	54	28.0	37.05	27.94	R	5	R					2.6	R				
436	10	3	2009	14	57	33.1	40.45	30.07	R	5	R					2.6	R				
437	10	3	2009	15	20	45.3	36.91	37.07	R	5	R					2.6	R				
438	10	3	2009	17	11	57.3	34.86	25.32	N	10	N			4.3	N	4.3	R				
439	10	3	2009	21	2	15.3	38.28	26.57	R	5	R					3.4	R				
440	10	3	2009	21	47	21.9	38.66	44.13	R	5	R					3.5	R				

**TÜRKİYE DEPREM ETKİNLİĞİ ( 2009 YILI MART AYI )**

No	Tarih - Date			Zaman - Time			Koordinat - Coordinate			Derinlik - Depth		Magnitüd - Magnitude									
	Gün	Ay	Yıl	Saat	Dak.	San.	Enlem-K	Boylam-D	Ref	Km.	Ref	Ms	Ref	Mb	Ref	Md	Ref	MI	Ref	Mw	Ref
441	10	3	2009	21	58	34.7	38.67	44.15	R	5	R					3.4	R				
442	10	3	2009	22	2	4.0	37.86	27.33	R	5	R					3.0	R				
443	10	3	2009	23	28	44.5	37.87	27.33	R	5	R					2.8	R				
444	10	3	2009	23	58	44.0	39.20	29.47	R	6	R					2.6	R				
445	11	3	2009	2	21	32.0	38.87	27.80	R	6	R					2.7	R				
446	11	3	2009	4	46	34.8	39.37	33.10	R	6	R					2.9	R				
447	11	3	2009	6	57	40.2	37.26	28.20	R	5	R					2.6	R				
448	11	3	2009	7	2	45.8	38.94	43.61	R	12	R					2.9	R				
449	11	3	2009	7	44	3.8	39.92	27.33	R	7	R					2.6	R				
450	11	3	2009	8	35	47.0	39.81	25.71	R	2	R					3.0	R				
451	11	3	2009	9	21	3.7	39.62	29.64	R	16	R					2.6	R				
452	11	3	2009	9	25	11.1	37.96	29.19	R	5	R					2.7	R				
453	11	3	2009	9	49	13.3	38.68	30.60	R	8	R					2.9	R				
454	11	3	2009	10	11	32.8	39.50	29.19	R	15	R					2.4	R				
455	11	3	2009	10	31	46.1	39.07	27.56	R	9	R					2.8	R				
456	11	3	2009	10	45	10.7	40.73	29.06	R	9	R					2.0	R				
457	11	3	2009	11	20	46.9	39.45	28.16	R	8	R					2.8	R				
458	11	3	2009	11	27	31.0	39.92	29.98	R	14	R					2.4	R				
459	11	3	2009	11	56	40.7	40.68	29.07	R	5	R					2.0	R				
460	11	3	2009	11	59	53.3	41.14	27.75	R	7	R					2.4	R				

**TÜRKİYE DEPREM ETKİNLİĞİ ( 2009 YILI MART AYI )**

No	Tarih - Date			Zaman - Time			Koordinat - Coordinate			Derinlik - Depth		Magnitüd - Magnitude									
	Gün	Ay	Yıl	Saat	Dak.	San.	Enlem-K	Boylam-D	Ref	Km.	Ref	Ms	Ref	Mb	Ref	Md	Ref	MI	Ref	Mw	Ref
461	11	3	2009	13	38	23.3	37.56	35.54	R	20	R					2.8	R				
462	11	3	2009	13	46	17.5	38.11	32.70	R	18	R					2.7	R				
463	11	3	2009	13	50	35.9	37.21	38.69	R	10	R					2.8	R				
464	11	3	2009	14	19	41.7	37.19	28.23	R	24	R					2.5	R				
465	11	3	2009	14	19	54.0	40.00	29.54	R	4	R					2.5	R				
466	11	3	2009	14	24	8.1	39.50	28.01	R	16	R					2.5	R				
467	11	3	2009	14	53	0.4	40.12	29.64	R	15	R					2.5	R				
468	11	3	2009	14	55	54.1	40.46	30.01	R	5	R					2.5	R				
469	11	3	2009	15	2	43.4	38.01	37.55	R	5	R					3.0	R				
470	11	3	2009	15	32	26.4	38.02	37.60	R	5	R					3.4	R				
471	11	3	2009	16	27	37.4	37.77	34.60	R	6	R					3.0	R				
472	11	3	2009	17	26	3.7	39.03	41.88	R	5	R					4.3	R	4.3	R	4.4	R
473	11	3	2009	17	40	51.7	39.11	41.86	R	6	R					3.0	R				
474	11	3	2009	18	21	24.2	39.02	41.88	R	5	R					3.5	R	3.4	R		
475	11	3	2009	18	42	21.1	37.24	30.90	R	101	R					2.9	R				
476	11	3	2009	19	9	20.8	37.27	43.64	R	5	R					3.0	R				
477	11	3	2009	23	37	44.1	40.15	24.73	R	5	R					3.0	R				
478	12	3	2009	0	38	32.6	35.71	32.15	R	3	R					3.4	R				
479	12	3	2009	1	18	15.1	39.88	39.67	R	15	R					2.9	R				
480	12	3	2009	2	22	41.1	38.31	25.71	R	12	R					3.1	R				

**TÜRKİYE DEPREM ETKİNLİĞİ ( 2009 YILI MART AYI )**

No	Tarih - Date			Zaman - Time			Koordinat - Coordinate			Derinlik - Depth		Magnitüd - Magnitude									
	Gün	Ay	Yıl	Saat	Dak.	San.	Enlem-K	Boylam-D	Ref	Km.	Ref	Ms	Ref	Mb	Ref	Md	Ref	MI	Ref	Mw	Ref
481	12	3	2009	3	3	51.2	37.94	28.55	R	6	R					2.9	R				
482	12	3	2009	5	15	16.4	40.53	29.22	R	5	R					2.3	R				
483	12	3	2009	6	18	37.0	39.05	32.38	R	5	R							3.4	R		
484	12	3	2009	6	43	2.8	37.88	29.06	R	14	R					2.8	R				
485	12	3	2009	7	9	51.0	39.46	33.11	R	2	R					3.1	R				
486	12	3	2009	7	42	22.8	37.15	28.21	R	19	R					2.9	R				
487	12	3	2009	8	53	53.4	39.05	32.39	R	6	R							3.2	R		
488	12	3	2009	10	35	49.7	38.03	37.95	R	13	R					2.7	R				
489	12	3	2009	10	40	29.1	38.68	30.61	R	13	R					2.7	R				
490	12	3	2009	12	1	30.0	39.46	33.16	R	5	R					3.0	R				
491	12	3	2009	12	15	49.9	39.94	33.51	R	9	R					2.8	R				
492	12	3	2009	12	19	36.6	39.43	33.12	R	5	R					3.1	R				
493	12	3	2009	12	52	42.1	40.46	42.32	R	5	R					3.1	R				
494	12	3	2009	12	59	44.9	40.47	42.35	R	10	R					3.0	R				
495	12	3	2009	13	57	30.9	38.47	39.31	R	4	R					2.8	R				
496	12	3	2009	14	35	27.2	39.04	41.93	R	2	R					3.2	R				
497	12	3	2009	14	39	25.7	35.20	34.40	R	20	R					3.2	R				
498	12	3	2009	14	41	23.7	40.10	30.03	R	8	R					2.6	R				
499	12	3	2009	14	54	7.3	40.49	29.99	R	10	R					2.7	R				
500	12	3	2009	15	45	25.0	37.14	28.18	R	14	R					2.9	R				

**TÜRKİYE DEPREM ETKİNLİĞİ ( 2009 YILI MART AYI )**

No	Tarih - Date			Zaman - Time			Koordinat - Coordinate			Derinlik - Depth		Magnitüd - Magnitude									
	Gün	Ay	Yıl	Saat	Dak.	San.	Enlem-K	Boylam-D	Ref	Km.	Ref	Ms	Ref	Mb	Ref	Md	Ref	MI	Ref	Mw	Ref
501	12	3	2009	16	28	28.6	37.10	28.03	R	5	R					2.6	R				
502	12	3	2009	18	44	0.1	39.09	29.05	R	5	R					2.7	R				
503	12	3	2009	20	15	34.0	39.36	32.48	R	5	R					3.5	R				
504	12	3	2009	21	16	41.8	34.93	33.29	R	44	R					2.7	R				
505	12	3	2009	21	49	6.6	37.23	43.46	R	3	R					3.6	R				
506	13	3	2009	0	49	18.7	38.42	39.14	R	6	R					2.8	R				
507	13	3	2009	1	4	44.6	36.80	27.65	R	9	R					2.7	R				
508	13	3	2009	1	20	29.3	37.32	27.65	R	5	R					2.4	R				
509	13	3	2009	1	26	33.8	38.36	39.21	R	16	R					2.6	R				
510	13	3	2009	1	27	18.1	36.74	29.18	R	17	R					2.6	R				
511	13	3	2009	1	28	2.3	40.56	32.96	R	5	R					3.1	R				
512	13	3	2009	1	36	42.4	37.40	38.62	R	10	R					3.0	R				
513	13	3	2009	2	22	54.8	39.47	32.88	R	16	R					2.8	R				
514	13	3	2009	2	41	8.2	37.01	29.18	R	7	R					2.9	R				
515	13	3	2009	3	59	49.6	36.79	27.66	R	4	R					2.6	R				
516	13	3	2009	4	13	35.7	38.98	29.74	R	5	R					2.7	R				
517	13	3	2009	4	47	38.7	36.78	27.65	R	2	R					2.7	R				
518	13	3	2009	9	13	39.1	39.58	27.01	R	9	R					2.8	R				
519	13	3	2009	9	16	4.4	40.56	32.96	R	6	R					3.2	R				
520	13	3	2009	9	55	4.5	37.65	38.00	R	30	R					2.8	R				

**TÜRKİYE DEPREM ETKİNLİĞİ ( 2009 YILI MART AYI )**

No	Tarih - Date			Zaman - Time			Koordinat - Coordinate			Derinlik - Depth		Magnitüd - Magnitude									
	Gün	Ay	Yıl	Saat	Dak.	San.	Enlem-K	Boylam-D	Ref	Km.	Ref	Ms	Ref	Mb	Ref	Md	Ref	MI	Ref	Mw	Ref
521	13	3	2009	11	25	37.4	39.45	28.16	R	8	R					2.8	R				
522	13	3	2009	12	3	40.9	40.58	29.29	R	7	R					2.7	R				
523	13	3	2009	13	42	6.2	40.53	39.40	R	5	R					2.5	R				
524	13	3	2009	15	17	38.9	40.48	29.21	R	5	R					2.4	R				
525	13	3	2009	17	28	27.2	38.25	35.11	R	7	R					3.0	R				
526	14	3	2009	0	43	38.1	39.21	44.46	R	10	R					2.9	R				
527	14	3	2009	1	17	29.8	40.79	33.88	R	3	R					3.2	R				
528	14	3	2009	1	44	32.0	40.79	33.88	R	14	R					2.9	R				
529	14	3	2009	2	13	52.8	38.49	39.38	R	4	R					3.3	R				
530	14	3	2009	3	24	34.2	38.28	42.80	R	4	R					3.1	R				
531	14	3	2009	4	8	47.4	41.49	37.20	R	5	R							3.6	R		
532	14	3	2009	6	31	18.5	39.88	40.83	R	5	R					3.0	R	2.9	R		
533	14	3	2009	12	3	14.7	37.83	26.88	R	5	R					2.9	R				
534	14	3	2009	12	33	27.7	41.25	36.38	R	3	R					2.9	R				
535	14	3	2009	12	50	0.7	39.11	40.83	R	5	R					2.9	R				
536	14	3	2009	15	45	27.4	40.28	29.95	R	18	R					2.5	R				
537	14	3	2009	16	10	35.0	40.42	27.72	R	6	R					2.4	R				
538	14	3	2009	18	53	38.7	38.82	26.82	R	17	R							3.9	R		
539	14	3	2009	21	55	48.8	37.09	29.13	R	4	R					2.7	R				
540	14	3	2009	23	59	25.5	41.44	31.43	R	13	R					3.1	R				

**TÜRKİYE DEPREM ETKİNLİĞİ ( 2009 YILI MART AYI )**

No	Tarih - Date			Zaman - Time			Koordinat - Coordinate			Derinlik - Depth		Magnitüd - Magnitude									
	Gün	Ay	Yıl	Saat	Dak.	San.	Enlem-K	Boylam-D	Ref	Km.	Ref	Ms	Ref	Mb	Ref	Md	Ref	MI	Ref	Mw	Ref
541	15	3	2009	0	23	6.4	37.25	36.98	R	5	R					3.0	R				
542	15	3	2009	1	40	46.2	37.38	38.83	R	10	R					2.6	R				
543	15	3	2009	2	27	15.6	38.25	39.39	R	10	R					2.6	R				
544	15	3	2009	4	34	54.8	39.00	24.70	R	4	R					3.2	R				
545	15	3	2009	4	35	56.3	39.22	25.13	R	5	R							3.6	R		
546	15	3	2009	4	54	24.6	35.50	32.75	R	5	R							2.8	R		
547	15	3	2009	5	1	10.8	38.80	26.86	R	22	R					2.7	R				
548	15	3	2009	5	28	13.7	40.58	27.27	R	7	R					2.9	R				
549	15	3	2009	6	53	25.2	38.85	26.82	R	9	R					3.3	R				
550	15	3	2009	8	20	52.4	37.89	28.98	R	18	R					2.6	R				
551	15	3	2009	8	29	44.8	37.07	28.24	R	18	R							1.9	R		
552	15	3	2009	8	54	17.9	37.23	39.21	R	23	R					2.8	R				
553	15	3	2009	8	56	24.2	37.90	29.07	R	16	R					2.6	R				
554	15	3	2009	9	22	18.0	38.41	39.14	R	5	R					2.6	R				
555	15	3	2009	9	49	20.9	38.62	26.30	R	5	R					2.8	R				
556	15	3	2009	10	6	11.8	38.62	26.23	R	5	R					2.9	R				
557	15	3	2009	10	18	2.1	36.97	34.48	R	6	R							1.9	R		
558	15	3	2009	11	43	25.7	38.29	26.10	R	5	R					2.9	R				
559	15	3	2009	12	58	46.5	41.37	31.95	R	26	R					2.7	R				
560	15	3	2009	15	17	17.7	37.92	29.09	R	7	R					2.8	R				

**TÜRKİYE DEPREM ETKİNLİĞİ ( 2009 YILI MART AYI )**

No	Tarih - Date			Zaman - Time			Koordinat - Coordinate			Derinlik - Depth		Magnitüd - Magnitude									
	Gün	Ay	Yıl	Saat	Dak.	San.	Enlem-K	Boylam-D	Ref	Km.	Ref	Ms	Ref	Mb	Ref	Md	Ref	MI	Ref	Mw	Ref
561	15	3	2009	15	41	56.2	38.36	26.34	R	20	R					2.8	R				
562	15	3	2009	15	53	54.5	37.28	28.25	R	23	R							2.1	R		
563	15	3	2009	18	47	19.2	38.73	32.11	R	9	R							1.9	R		
564	15	3	2009	19	14	11.5	37.95	26.86	R	17	R					2.7	R				
565	15	3	2009	19	30	41.8	38.85	26.85	R	5	R					2.9	R				
566	15	3	2009	19	56	46.9	38.14	29.09	R	16	R					2.7	R				
567	15	3	2009	22	0	31.3	39.16	29.41	R	7	R							1.7	R		
568	16	3	2009	0	36	43.6	39.11	29.09	R	8	R					2.6	R				
569	16	3	2009	1	4	51.2	37.92	29.24	R	2	R					2.8	R				
570	16	3	2009	4	37	14.3	39.90	27.14	R	5	R					2.9	R				
571	16	3	2009	4	38	15.6	39.92	27.19	R	5	R					3.1	R				
572	16	3	2009	6	51	36.8	40.89	27.71	R	23	R							1.7	R		
573	16	3	2009	10	39	50.7	38.97	44.68	R	5	R							3.0	R		
574	16	3	2009	10	42	21.7	38.91	44.78	R	3	R							2.3	R		
575	16	3	2009	11	47	23.5	40.98	39.61	R	5	R					2.9	R				
576	16	3	2009	11	54	10.1	37.02	35.51	R	5	R							1.6	R		
577	16	3	2009	12	13	58.9	39.00	44.63	R	5	R					3.1	R				
578	16	3	2009	12	17	48.6	39.41	29.05	R	8	R					2.8	R				
579	16	3	2009	12	19	52.2	37.22	38.64	R	14	R					2.8	R				
580	16	3	2009	12	32	56.0	41.25	31.51	R	13	R					2.8	R				



**TÜRKİYE DEPREM ETKİNLİĞİ ( 2009 YILI MART AYI )**

No	Tarih - Date			Zaman - Time			Koordinat - Coordinate			Derinlik - Depth		Magnitüd - Magnitude									
	Gün	Ay	Yıl	Saat	Dak.	San.	Enlem-K	Boylam-D	Ref	Km.	Ref	Ms	Ref	Mb	Ref	Md	Ref	MI	Ref	Mw	Ref
581	16	3	2009	13	19	40.4	36.77	34.12	R	5	R							1.9	R		
582	16	3	2009	13	40	9.5	39.75	33.31	R	2	R							2.1	R		
583	16	3	2009	14	5	31.6	40.28	30.04	R	5	R					2.6	R				
584	16	3	2009	14	48	53.0	37.92	29.14	R	12	R					2.8	R				
585	16	3	2009	16	48	36.2	41.64	37.64	R	8	R					3.5	R				
586	16	3	2009	18	49	35.6	39.26	29.78	R	12	R					2.6	R				
587	16	3	2009	18	55	44.1	39.44	29.10	R	8	R					2.8	R				
588	16	3	2009	19	16	4.0	39.38	40.51	R	6	R					3.0	R				
589	16	3	2009	19	53	0.1	37.93	30.98	R	10	R					2.9	R				
590	16	3	2009	20	27	28.8	38.46	39.59	R	10	R					2.8	R				
591	17	3	2009	0	7	7.1	40.63	30.31	R	4	R					2.6	R				
592	17	3	2009	1	44	14.9	41.11	35.14	R	8	R					2.9	R				
593	17	3	2009	4	6	1.6	37.02	28.25	R	11	R							1.9	R		
594	17	3	2009	4	38	35.1	40.39	37.99	R	4	R					3.4	R				
595	17	3	2009	6	15	56.4	39.20	32.87	R	8	R					2.9	R				
596	17	3	2009	9	53	31.6	37.28	28.25	R	7	R							2.5	R		
597	17	3	2009	10	58	34.7	37.68	35.48	R	6	R							2.0	R		
598	17	3	2009	11	19	3.0	39.44	28.13	R	9	R					2.8	R				
599	17	3	2009	12	30	33.5	39.45	28.15	R	13	R					2.6	R				
600	17	3	2009	13	11	31.5	40.34	25.80	R	7	R					2.9	R				

**TÜRKİYE DEPREM ETKİNLİĞİ ( 2009 YILI MART AYI )**

No	Tarih - Date			Zaman - Time			Koordinat - Coordinate			Derinlik - Depth		Magnitüd - Magnitude									
	Gün	Ay	Yıl	Saat	Dak.	San.	Enlem-K	Boylam-D	Ref	Km.	Ref	Ms	Ref	Mb	Ref	Md	Ref	MI	Ref	Mw	Ref
601	17	3	2009	13	12	37.0	39.58	31.20	R	10	R							<b>2.3</b>	R		
602	17	3	2009	13	35	9.6	39.36	33.14	R	6	R							<b>2.0</b>	R		
603	17	3	2009	14	38	31.4	38.35	30.89	R	5	R					<b>3.1</b>	R				
604	17	3	2009	14	43	20.0	39.12	29.04	R	5	R					<b>2.9</b>	R				
605	17	3	2009	15	54	20.4	37.21	28.18	R	8	R							<b>1.9</b>	R		
606	17	3	2009	16	25	25.9	40.35	27.85	R	6	R					<b>2.8</b>	R				
607	17	3	2009	17	13	9.5	40.41	37.97	R	5	R					<b>3.5</b>	R				
608	17	3	2009	17	36	22.3	42.08	26.21	R	3	R					<b>3.2</b>	R				
609	17	3	2009	19	30	55.5	39.07	29.21	R	9	R					<b>2.8</b>	R				
610	17	3	2009	21	3	38.8	39.99	40.02	R	9	R					<b>2.8</b>	R				
611	17	3	2009	21	22	59.1	37.52	35.74	R	15	R							<b>1.9</b>	R		
612	17	3	2009	22	2	58.6	36.98	28.26	R	7	R					<b>2.9</b>	R				
613	17	3	2009	22	56	23.8	39.00	27.70	R	13	R					<b>2.8</b>	R				
614	17	3	2009	23	58	6.3	37.92	27.17	R	6	R					<b>3.0</b>	R				
615	18	3	2009	0	10	10.0	39.10	40.80	R	4	R					<b>3.2</b>	R				
616	18	3	2009	1	8	24.9	39.28	41.58	R	8	R					<b>3.0</b>	R				
617	18	3	2009	1	46	27.4	39.85	38.65	R	8	R					<b>3.3</b>	R				
618	18	3	2009	2	14	38.4	38.64	43.00	R	5	R					<b>2.7</b>	R				
619	18	3	2009	2	54	31.8	38.62	26.61	R	8	R					<b>2.9</b>	R				
620	18	3	2009	3	23	3.4	40.80	27.79	R	6	R					<b>3.0</b>	R				

**TÜRKİYE DEPREM ETKİNLİĞİ ( 2009 YILI MART AYI )**

No	Tarih - Date			Zaman - Time			Koordinat - Coordinate			Derinlik - Depth		Magnitüd - Magnitude										
	Gün	Ay	Yıl	Saat	Dak.	San.	Enlem-K	Boylam-D	Ref	Km.	Ref	Ms	Ref	Mb	Ref	Md	Ref	Ml	Ref	Mw	Ref	
621	18	3	2009	3	57	1.0	39.12	29.61	R	8	R					2.7	R					
622	18	3	2009	4	13	25.0	34.24	32.49	R	5	R							2.3	R			
623	18	3	2009	7	19	7.6	38.71	27.60	R	8	R					2.8	R					
624	18	3	2009	7	42	39.6	37.29	28.22	R	6	R							2.2	R			
625	18	3	2009	8	45	46.3	39.01	27.69	R	7	R					3.0	R					
626	18	3	2009	9	47	5.2	40.81	27.75	R	14	R					2.8	R					
627	18	3	2009	9	47	56.2	40.80	27.77	R	12	R							2.0	R			
628	18	3	2009	9	55	33.7	40.82	27.76	R	5	R					2.9	R					
629	18	3	2009	9	56	32.7	40.82	27.77	R	9	R					2.6	R					
630	18	3	2009	10	3	33.2	40.81	27.77	R	18	R					2.8	R					
631	18	3	2009	10	22	28.4	39.48	28.16	R	5	R					2.9	R					
632	18	3	2009	10	47	36.3	37.54	35.68	R	10	R							2.4	R			
633	18	3	2009	11	21	14.9	36.98	29.21	R	12	R					2.8	R					
634	18	3	2009	11	42	13.2	37.57	36.42	R	5	R							1.7	R			
635	18	3	2009	12	4	39.8	39.41	28.11	R	9	R					2.9	R					
636	18	3	2009	12	53	27.0	40.72	34.90	R	6	R					2.8	R					
637	18	3	2009	13	33	44.4	38.71	35.69	R	5	R							1.9	R			
638	18	3	2009	13	34	38.0	37.12	27.94	R	28	R							2.3	R			
639	18	3	2009	13	52	30.2	40.13	29.56	R	5	R					2.6	R					
640	18	3	2009	14	3	59.3	39.43	28.14	R	11	R							1.6	R			

**TÜRKİYE DEPREM ETKİNLİĞİ ( 2009 YILI MART AYI )**

No	Tarih - Date			Zaman - Time			Koordinat - Coordinate			Derinlik - Depth		Magnitüd - Magnitude									
	Gün	Ay	Yıl	Saat	Dak.	San.	Enlem-K	Boylam-D	Ref	Km.	Ref	Ms	Ref	Mb	Ref	Md	Ref	MI	Ref	Mw	Ref
641	18	3	2009	14	8	58.6	39.16	27.61	R	6	R					2.7	R				
642	18	3	2009	14	9	49.8	37.27	28.24	R	11	R							1.6	R		
643	18	3	2009	14	17	27.0	37.01	28.24	R	14	R							2.0	R		
644	18	3	2009	14	18	31.6	38.85	26.80	R	7	R					3.0	R				
645	18	3	2009	14	29	23.9	40.18	30.02	R	5	R					2.7	R				
646	18	3	2009	14	55	8.1	36.01	36.30	R	7	R					2.8	R				
647	18	3	2009	15	5	44.8	37.50	35.36	R	8	R							1.9	R		
648	18	3	2009	15	16	3.8	39.69	38.39	R	8	R					3.1	R				
649	18	3	2009	15	27	54.9	39.48	27.91	R	7	R					3.1	R				
650	18	3	2009	15	33	57.0	40.82	26.37	R	8	R							1.3	R		
651	18	3	2009	15	41	22.5	37.24	28.20	R	5	R							2.0	R		
652	18	3	2009	16	33	37.5	40.80	27.76	R	11	R							3.7	R		
653	18	3	2009	17	48	29.9	40.81	27.78	R	10	R					2.9	R				
654	18	3	2009	19	15	11.4	39.38	27.97	R	2	R					3.0	R				
655	18	3	2009	22	5	33.8	39.07	41.50	R	20	R					2.9	R				
656	18	3	2009	22	7	26.9	39.03	41.54	R	8	R					3.0	R				
657	18	3	2009	22	32	9.0	40.80	27.77	R	5	R					2.8	R				
658	18	3	2009	22	59	48.9	38.60	39.54	R	5	R					2.7	R				
659	19	3	2009	1	15	5.8	39.11	29.04	R	6	R					2.9	R				
660	19	3	2009	1	18	7.9	39.37	39.15	R	9	R					2.7	R				

**TÜRKİYE DEPREM ETKİNLİĞİ ( 2009 YILI MART AYI )**

No	Tarih - Date			Zaman - Time			Koordinat - Coordinate			Derinlik - Depth		Magnitüd - Magnitude									
	Gün	Ay	Yıl	Saat	Dak.	San.	Enlem-K	Boylam-D	Ref	Km.	Ref	Ms	Ref	Mb	Ref	Md	Ref	MI	Ref	Mw	Ref
661	19	3	2009	1	24	23.7	39.35	39.14	R	9	R					2.9	R				
662	19	3	2009	2	5	51.3	37.88	29.07	R	5	R					2.9	R				
663	19	3	2009	5	22	19.1	38.51	39.13	R	15	R					2.7	R				
664	19	3	2009	5	38	58.4	38.48	39.16	R	3	R					2.9	R				
665	19	3	2009	6	4	25.4	38.47	39.18	R	13	R					2.8	R				
666	19	3	2009	6	58	54.0	38.48	39.18	R	5	R					2.7	R				
667	19	3	2009	7	25	13.1	37.86	29.05	R	21	R					2.5	R				
668	19	3	2009	7	41	11.7	37.89	29.04	R	3	R					3.2	R				
669	19	3	2009	8	27	35.6	37.23	28.22	R	11	R							2.0	R		
670	19	3	2009	8	46	16.5	37.88	29.05	R	5	R					3.3	R				
671	19	3	2009	9	11	17.2	37.11	28.14	R	5	R							1.9	R		
672	19	3	2009	9	14	15.6	40.96	31.50	R	16	R					2.8	R				
673	19	3	2009	9	24	56.5	40.68	42.51	R	8	R							2.6	R		
674	19	3	2009	9	29	26.9	37.14	27.91	R	5	R							1.7	R		
675	19	3	2009	10	5	15.8	38.32	38.13	R	14	R					2.4	R				
676	19	3	2009	10	24	41.8	37.11	37.25	R	5	R							2.1	R		
677	19	3	2009	10	29	13.3	39.38	40.85	R	16	R					2.8	R				
678	19	3	2009	12	31	15.5	39.52	28.26	R	18	R							1.8	R		
679	19	3	2009	12	32	31.0	40.12	29.39	R	11	R					2.7	R				
680	19	3	2009	13	13	42.9	36.82	26.64	R	10	R							2.5	R		

**TÜRKİYE DEPREM ETKİNLİĞİ ( 2009 YILI MART AYI )**

No	Tarih - Date			Zaman - Time			Koordinat - Coordinate			Derinlik - Depth		Magnitüd - Magnitude									
	Gün	Ay	Yıl	Saat	Dak.	San.	Enlem-K	Boylam-D	Ref	Km.	Ref	Ms	Ref	Mb	Ref	Md	Ref	MI	Ref	Mw	Ref
681	19	3	2009	13	59	37.0	39.95	28.08	R	12	R							<b>2.1</b>	R		
682	19	3	2009	15	50	29.9	39.67	29.11	R	5	R					<b>2.9</b>	R				
683	19	3	2009	15	52	57.1	37.20	28.16	R	9	R					<b>3.0</b>	R				
684	19	3	2009	16	14	59.7	39.46	31.60	R	5	R					<b>3.0</b>	R				
685	19	3	2009	16	44	27.8	38.62	26.99	R	4	R					<b>3.0</b>	R				
686	19	3	2009	17	27	48.8	37.03	26.53	R	10	R					<b>3.1</b>	R				
687	19	3	2009	17	44	55.5	35.90	34.93	R	7	R							<b>2.6</b>	R		
688	19	3	2009	18	24	31.5	39.39	27.98	R	10	R					<b>2.9</b>	R				
689	19	3	2009	22	48	26.7	39.40	41.86	R	6	R							<b>1.9</b>	R		
690	19	3	2009	23	55	36.5	37.84	30.73	R	8	R					<b>3.0</b>	R				
691	20	3	2009	0	6	14.4	39.65	29.09	R	11	R					<b>2.6</b>	R				
692	20	3	2009	2	5	4.8	39.42	26.33	R	10	R					<b>3.5</b>	R				
693	20	3	2009	2	13	14.4	39.50	26.39	R	6	R					<b>2.9</b>	R				
694	20	3	2009	2	21	38.0	41.36	39.79	R	13	R							<b>3.0</b>	R		
695	20	3	2009	2	22	58.8	40.67	27.49	R	16	R							<b>1.5</b>	R		
696	20	3	2009	2	43	50.5	38.93	26.42	R	8	R					<b>3.1</b>	R				
697	20	3	2009	2	57	36.4	37.91	29.05	R	17	R					<b>2.7</b>	R				
698	20	3	2009	7	42	55.8	40.72	30.64	R	14	R					<b>2.8</b>	R				
699	20	3	2009	9	51	29.2	37.24	28.16	R	5	R							<b>1.8</b>	R		
700	20	3	2009	10	13	34.2	40.31	26.36	R	10	R							<b>1.4</b>	R		

**TÜRKİYE DEPREM ETKİNLİĞİ ( 2009 YILI MART AYI )**

No	Tarih - Date			Zaman - Time			Koordinat - Coordinate			Derinlik - Depth		Magnitüd - Magnitude									
	Gün	Ay	Yıl	Saat	Dak.	San.	Enlem-K	Boylam-D	Ref	Km.	Ref	Ms	Ref	Mb	Ref	Md	Ref	MI	Ref	Mw	Ref
701	20	3	2009	12	23	7.2	37.03	27.95	R	5	R							1.7	R		
702	20	3	2009	12	41	51.6	40.14	27.34	R	13	R							1.7	R		
703	20	3	2009	13	30	27.0	41.52	27.92	R	8	R							1.8	R		
704	20	3	2009	13	55	15.4	39.08	29.04	R	5	R					2.8	R				
705	20	3	2009	15	11	10.2	37.33	28.28	R	7	R							2.4	R		
706	20	3	2009	17	26	18.2	37.08	28.32	R	5	R							2.0	R		
707	20	3	2009	17	59	45.3	40.38	25.75	R	6	R							3.7	R		
708	20	3	2009	19	8	33.6	40.38	25.76	R	7	R					3.1	R				
709	20	3	2009	20	3	23.4	40.37	25.80	R	5	R					3.4	R				
710	20	3	2009	23	15	47.0	39.13	28.26	R	13	R					3.2	R				
711	21	3	2009	0	57	27.8	38.09	42.46	R	5	R					3.1	R				
712	21	3	2009	2	49	18.4	39.39	28.00	R	6	R					3.1	R				
713	21	3	2009	4	9	38.4	39.38	27.99	R	11	R					2.7	R				
714	21	3	2009	5	1	48.9	40.38	25.73	R	4	R					2.8	R				
715	21	3	2009	6	41	23.6	38.89	29.19	R	10	R							2.3	R		
716	21	3	2009	7	44	40.4	39.38	27.99	R	5	R					2.9	R				
717	21	3	2009	8	7	33.6	37.91	29.14	R	10	R					2.9	R				
718	21	3	2009	8	8	57.7	38.01	38.24	R	5	R					2.8	R				
719	21	3	2009	8	45	5.6	39.40	33.09	R	4	R					2.9	R				
720	21	3	2009	10	21	48.9	39.35	28.17	R	23	R					2.7	R				

**TÜRKİYE DEPREM ETKİNLİĞİ ( 2009 YILI MART AYI )**

No	Tarih - Date			Zaman - Time			Koordinat - Coordinate			Derinlik - Depth		Magnitüd - Magnitude									
	Gün	Ay	Yıl	Saat	Dak.	San.	Enlem-K	Boylam-D	Ref	Km.	Ref	Ms	Ref	Mb	Ref	Md	Ref	MI	Ref	Mw	Ref
721	21	3	2009	10	29	38.2	39.11	27.60	R	15	R					2.9	R				
722	21	3	2009	10	42	50.3	37.57	35.51	R	19	R							2.3	R		
723	21	3	2009	11	30	21.0	37.16	37.23	R	5	R							1.9	R		
724	21	3	2009	11	33	34.1	38.39	39.01	R	8	R					2.8	R				
725	21	3	2009	12	20	11.2	37.95	34.76	R	7	R							2.0	R		
726	21	3	2009	12	25	44.3	38.71	36.97	R	21	R					3.0	R				
727	21	3	2009	14	0	35.8	39.38	27.95	R	5	R							2.2	R		
728	21	3	2009	14	30	25.0	38.69	39.60	R	5	R					2.8	R				
729	21	3	2009	14	58	42.6	38.21	38.26	R	9	R					2.9	R				
730	21	3	2009	15	42	41.2	39.24	40.95	R	14	R					3.0	R				
731	21	3	2009	15	47	0.1	39.42	28.16	R	12	R					2.7	R				
732	21	3	2009	17	15	19.1	37.57	35.68	R	7	R							2.2	R		
733	21	3	2009	19	19	17.8	39.17	29.46	R	5	R							1.9	R		
734	21	3	2009	19	21	4.7	39.30	27.88	R	13	R							2.1	R		
735	21	3	2009	20	35	0.6	34.71	25.56	N	34	N			4.4	N						
736	21	3	2009	21	48	39.7	39.40	26.10	R	6	R					3.2	R				
737	21	3	2009	22	59	5.1	40.14	28.93	R	6	R					2.8	R				
738	22	3	2009	0	53	20.2	37.91	29.13	R	5	R							3.3	R		
739	22	3	2009	2	25	42.0	39.74	38.60	R	4	R					2.9	R				
740	22	3	2009	2	31	52.5	38.35	38.92	R	5	R							3.5	R		



**TÜRKİYE DEPREM ETKİNLİĞİ ( 2009 YILI MART AYI )**

No	Tarih - Date			Zaman - Time			Koordinat - Coordinate			Derinlik - Depth		Magnitüd - Magnitude									
	Gün	Ay	Yıl	Saat	Dak.	San.	Enlem-K	Boylam-D	Ref	Km.	Ref	Ms	Ref	Mb	Ref	Md	Ref	MI	Ref	Mw	Ref
741	22	3	2009	2	48	40.8	38.32	38.97	R	8	R					2.7	R				
742	22	3	2009	3	18	14.7	39.36	27.96	R	12	R					2.7	R				
743	22	3	2009	4	59	3.0	38.11	26.91	R	9	R					2.9	R				
744	22	3	2009	5	2	17.2	38.14	26.82	R	5	R					3.1	R				
745	22	3	2009	5	41	26.3	37.88	29.14	R	5	R							3.3	R		
746	22	3	2009	6	2	35.9	40.40	25.77	R	16	R					2.7	R				
747	22	3	2009	6	20	46.6	36.96	27.87	R	10	R					3.2	R				
748	22	3	2009	6	55	13.1	37.92	29.16	R	5	R					2.7	R				
749	22	3	2009	8	9	25.7	36.97	27.88	R	16	R					2.4	R				
750	22	3	2009	10	5	11.7	37.18	37.11	R	5	R					2.7	R				
751	22	3	2009	15	8	18.2	37.02	28.18	R	3	R					3.2	R				
752	22	3	2009	15	37	10.2	40.59	28.97	R	5	R					2.5	R				
753	22	3	2009	16	37	47.0	40.56	29.12	R	17	R					2.5	R				
754	22	3	2009	19	23	34.7	37.54	35.71	R	10	R					3.6	R				
755	22	3	2009	19	48	51.4	37.57	35.72	R	4	R					3.2	R				
756	22	3	2009	23	4	39.8	37.62	35.66	R	8	R					2.6	R				
757	23	3	2009	1	22	5.6	37.56	35.65	R	6	R					2.6	R				
758	23	3	2009	1	58	48.5	37.54	35.68	R	4	R					3.1	R				
759	23	3	2009	2	8	7.1	40.80	38.48	R	5	R					3.2	R				
760	23	3	2009	3	57	48.5	38.91	35.63	R	5	R					3.0	R				

**TÜRKİYE DEPREM ETKİNLİĞİ ( 2009 YILI MART AYI )**

No	Tarih - Date			Zaman - Time			Koordinat - Coordinate			Derinlik - Depth		Magnitüd - Magnitude									
	Gün	Ay	Yıl	Saat	Dak.	San.	Enlem-K	Boylam-D	Ref	Km.	Ref	Ms	Ref	Mb	Ref	Md	Ref	MI	Ref	Mw	Ref
761	23	3	2009	4	1	8.5	38.90	35.58	R	5	R					3.0	R				
762	23	3	2009	4	23	27.2	37.52	35.69	R	7	R					3.4	R				
763	23	3	2009	7	42	54.7	38.72	40.30	R	9	R					3.0	R				
764	23	3	2009	9	6	31.5	37.25	28.22	R	7	R					2.2	R				
765	23	3	2009	10	56	5.9	37.85	29.07	R	5	R					2.9	R				
766	23	3	2009	10	57	26.6	39.43	28.14	R	11	R					2.8	R				
767	23	3	2009	11	7	26.3	38.89	30.28	R	5	R					2.5	R				
768	23	3	2009	11	52	45.5	40.49	29.27	R	11	R					2.5	R				
769	23	3	2009	13	1	47.0	37.58	35.68	R	8	R					2.6	R				
770	23	3	2009	13	27	40.8	41.43	35.93	R	8	R					2.8	R				
771	23	3	2009	13	37	45.4	35.06	30.29	R	53	R					3.4	R				
772	23	3	2009	13	59	26.1	38.13	26.62	R	8	R					2.8	R				
773	23	3	2009	14	30	21.9	40.20	30.02	R	4	R					2.5	R				
774	23	3	2009	15	7	41.2	37.19	28.18	R	17	R					2.4	R				
775	23	3	2009	16	33	40.0	40.39	25.79	R	5	R					3.3	R				
776	23	3	2009	18	37	54.2	37.62	29.63	R	21	R					2.6	R				
777	23	3	2009	19	13	13.2	38.87	40.60	R	8	R					2.6	R				
778	23	3	2009	19	51	46.4	39.48	36.70	R	5	R					3.3	R				
779	23	3	2009	21	54	52.3	35.06	40.53	R	5	R							3.5	R		
780	23	3	2009	21	55	56.1	39.93	39.68	R	12	R					2.6	R				

**TÜRKİYE DEPREM ETKİNLİĞİ ( 2009 YILI MART AYI )**

No	Tarih - Date			Zaman - Time			Koordinat - Coordinate			Derinlik - Depth		Magnitüd - Magnitude									
	Gün	Ay	Yıl	Saat	Dak.	San.	Enlem-K	Boylam-D	Ref	Km.	Ref	Ms	Ref	Mb	Ref	Md	Ref	MI	Ref	Mw	Ref
781	23	3	2009	22	43	33.9	36.32	40.91	R	12	R					<b>3.6</b>	R				
782	23	3	2009	23	20	55.2	37.32	37.13	R	5	R					<b>2.7</b>	R				
783	23	3	2009	23	27	5.0	37.19	27.92	R	2	R					<b>2.6</b>	R				
784	24	3	2009	1	54	10.6	36.96	27.91	R	20	R					<b>2.6</b>	R				
785	24	3	2009	2	43	51.6	39.96	39.21	R	8	R					<b>2.8</b>	R				
786	24	3	2009	3	26	48.9	36.96	27.88	R	3	R					<b>2.2</b>	R				
787	24	3	2009	4	5	52.2	36.96	27.89	R	11	R					<b>2.5</b>	R				
788	24	3	2009	4	10	2.6	39.51	28.61	R	10	R					<b>2.4</b>	R				
789	24	3	2009	4	10	27.3	36.97	27.87	R	5	R					<b>2.2</b>	R				
790	24	3	2009	4	56	6.6	40.32	25.83	R	2	R					<b>3.1</b>	R				
791	24	3	2009	5	19	45.4	36.35	27.29	R	7	R					<b>2.7</b>	R				
792	24	3	2009	5	34	21.4	40.21	25.46	R	5	R					<b>3.0</b>	R				
793	24	3	2009	9	39	5.4	39.55	28.70	R	9	R					<b>2.9</b>	R				
794	24	3	2009	10	37	3.0	39.04	41.88	R	5	R					<b>3.5</b>	R				
795	24	3	2009	10	40	0.6	38.95	41.87	R	8	R					<b>3.1</b>	R				
796	24	3	2009	10	41	1.0	37.35	37.18	R	6	R					<b>2.9</b>	R				
797	24	3	2009	11	37	22.8	41.15	36.36	R	15	R					<b>2.7</b>	R				
798	24	3	2009	13	33	25.2	39.10	29.02	R	9	R					<b>2.7</b>	R				
799	24	3	2009	14	35	5.1	37.80	27.54	R	5	R					<b>2.7</b>	R				
800	24	3	2009	14	56	12.2	41.17	36.14	R	5	R					<b>1.9</b>	R				

**TÜRKİYE DEPREM ETKİNLİĞİ ( 2009 YILI MART AYI )**

No	Tarih - Date			Zaman - Time			Koordinat - Coordinate			Derinlik - Depth		Magnitüd - Magnitude									
	Gün	Ay	Yıl	Saat	Dak.	San.	Enlem-K	Boylam-D	Ref	Km.	Ref	Ms	Ref	Mb	Ref	Md	Ref	MI	Ref	Mw	Ref
801	24	3	2009	18	15	53.1	41.06	33.93	R	10	R					2.6	R				
802	24	3	2009	21	10	47.0	39.32	27.88	R	16	R					2.7	R				
803	24	3	2009	21	33	46.5	37.35	38.36	R	2	R					2.9	R				
804	24	3	2009	22	57	42.2	37.65	38.74	R	21	R					2.6	R				
805	25	3	2009	1	46	43.6	40.78	27.56	R	8	R					2.8	R				
806	25	3	2009	2	16	49.5	38.52	43.27	R	14	R					2.5	R				
807	25	3	2009	2	19	37.0	34.86	40.51	R	25	R					3.9	R				
808	25	3	2009	3	9	29.9	42.70	35.91	R	8	R					3.5	R				
809	25	3	2009	4	49	21.1	39.53	32.63	R	11	R					2.7	R				
810	25	3	2009	4	54	21.7	38.64	27.19	R	15	R					2.8	R				
811	25	3	2009	5	1	28.7	38.63	27.19	R	19	R					2.7	R				
812	25	3	2009	7	57	7.1	38.69	39.11	R	18	R					2.5	R				
813	25	3	2009	10	21	10.1	37.68	38.16	R	5	R					2.6	R				
814	25	3	2009	10	46	52.8	39.20	29.56	R	11	R					2.6	R				
815	25	3	2009	12	20	29.5	37.22	30.46	R	97	R					3.1	R				
816	25	3	2009	12	52	14.0	39.23	41.49	R	11	R					2.9	R				
817	25	3	2009	18	50	8.5	40.81	31.45	R	9	R					2.6	R				
818	25	3	2009	21	57	9.7	37.79	33.83	R	5	R					2.6	R				
819	25	3	2009	22	5	7.2	37.88	29.07	R	5	R					2.9	R				
820	25	3	2009	22	10	9.0	38.15	39.19	R	6	R					3.3	R				

**TÜRKİYE DEPREM ETKİNLİĞİ ( 2009 YILI MART AYI )**

No	Tarih - Date			Zaman - Time			Koordinat - Coordinate			Derinlik - Depth		Magnitüd - Magnitude									
	Gün	Ay	Yıl	Saat	Dak.	San.	Enlem-K	Boylam-D	Ref	Km.	Ref	Ms	Ref	Mb	Ref	Md	Ref	MI	Ref	Mw	Ref
821	25	3	2009	22	10	11.6	37.82	29.10	R	11	R					2.7	R				
822	25	3	2009	22	14	56.1	38.13	39.17	R	3	R					3.1	R				
823	25	3	2009	22	27	50.6	37.83	29.11	R	4	R					2.6	R				
824	25	3	2009	22	59	31.7	38.44	39.40	R	5	R					3.2	R				
825	26	3	2009	3	41	7.9	37.80	29.04	R	15	R					2.6	R				
826	26	3	2009	3	51	19.0	39.41	33.11	R	5	R					2.5	R				
827	26	3	2009	9	3	49.1	36.28	32.11	R	32	R					3.0	R				
828	26	3	2009	10	7	28.0	39.93	41.36	R	4	R					3.1	R				
829	26	3	2009	10	14	30.0	38.56	38.60	R	9	R					2.7	R				
830	26	3	2009	10	26	34.8	40.21	30.00	R	12	R					2.7	R				
831	26	3	2009	10	31	24.5	40.45	30.03	R	5	R					2.5	R				
832	26	3	2009	10	50	34.5	38.85	26.98	R	7	R					2.7	R				
833	26	3	2009	10	51	26.0	38.85	26.98	R	6	R					2.5	R				
834	26	3	2009	11	13	52.1	40.59	26.50	R	19	R					2.5	R				
835	26	3	2009	19	38	24.5	39.49	36.75	R	5	R					3.2	R				
836	26	3	2009	19	56	44.5	36.26	41.26	R	9	R					3.6	R				
837	26	3	2009	21	2	28.8	39.61	28.57	R	7	R					3.1	R				
838	26	3	2009	21	24	58.4	40.47	35.55	R	7	R					2.9	R				
839	26	3	2009	22	54	56.4	37.80	31.14	R	7	R					3.3	R				
840	27	3	2009	0	14	26.7	39.32	33.03	R	7	R					2.6	R				

**TÜRKİYE DEPREM ETKİNLİĞİ ( 2009 YILI MART AYI )**

No	Tarih - Date			Zaman - Time			Koordinat - Coordinate			Derinlik - Depth		Magnitüd - Magnitude									
	Gün	Ay	Yıl	Saat	Dak.	San.	Enlem-K	Boylam-D	Ref	Km.	Ref	Ms	Ref	Mb	Ref	Md	Ref	MI	Ref	Mw	Ref
841	27	3	2009	1	15	7.8	36.33	29.94	R	10	R					3.3	R				
842	27	3	2009	2	20	40.6	39.58	39.93	R	5	R					2.7	R				
843	27	3	2009	4	33	47.6	40.48	29.17	R	5	R					2.5	R				
844	27	3	2009	6	26	5.2	39.59	39.92	R	2	R					2.8	R				
845	27	3	2009	6	58	50.1	36.28	27.60	R	23	R					2.7	R				
846	27	3	2009	7	0	22.1	37.58	36.18	R	17	R					2.9	R				
847	27	3	2009	9	1	37.6	39.90	30.01	R	5	R					2.7	R				
848	27	3	2009	10	27	11.6	37.14	37.24	R	5	R					2.5	R				
849	27	3	2009	10	28	18.3	39.56	38.66	R	12	R					3.2	R				
850	27	3	2009	13	0	51.4	40.11	39.08	R	5	R					2.7	R				
851	27	3	2009	13	28	13.1	37.85	36.81	R	3	R					2.7	R				
852	27	3	2009	13	54	31.8	41.62	32.21	R	8	R					2.7	R				
853	27	3	2009	14	42	15.5	39.06	42.16	R	5	R							3.3	R		
854	27	3	2009	16	7	30.8	38.45	39.29	R	10	R					2.5	R				
855	27	3	2009	16	48	57.2	38.82	25.83	R	5	R					3.2	R				
856	27	3	2009	19	19	48.4	39.25	42.39	R	10	R					2.8	R				
857	28	3	2009	0	5	21.7	37.92	29.08	R	7	R					2.8	R				
858	28	3	2009	0	7	18.9	37.92	29.08	R	3	R					3.0	R				
859	28	3	2009	0	18	13.7	37.93	29.09	R	15	R					2.4	R				
860	28	3	2009	5	4	48.8	39.06	26.61	R	16	R					3.1	R				

**TÜRKİYE DEPREM ETKİNLİĞİ ( 2009 YILI MART AYI )**

No	Tarih - Date			Zaman - Time			Koordinat - Coordinate			Derinlik - Depth		Magnitüd - Magnitude									
	Gün	Ay	Yıl	Saat	Dak.	San.	Enlem-K	Boylam-D	Ref	Km.	Ref	Ms	Ref	Mb	Ref	Md	Ref	MI	Ref	Mw	Ref
861	28	3	2009	5	6	56.5	37.91	29.10	R	5	R					2.3	R				
862	28	3	2009	6	7	5.2	38.73	38.76	R	6	R					3.5	R				
863	28	3	2009	8	15	0.3	38.81	41.91	R	5	R					2.7	R				
864	28	3	2009	8	56	20.4	40.91	40.59	R	10	R					2.7	R				
865	28	3	2009	9	4	27.5	39.80	40.62	R	17	R					2.7	R				
866	28	3	2009	9	12	26.0	37.76	29.40	R	8	R					2.7	R				
867	28	3	2009	9	27	50.0	40.33	40.73	R	11	R					2.7	R				
868	28	3	2009	10	13	21.1	38.97	31.26	R	8	R					2.7	R				
869	28	3	2009	11	4	57.6	39.11	27.52	R	14	R					2.8	R				
870	28	3	2009	11	12	59.6	39.44	28.16	R	20	R					2.6	R				
871	28	3	2009	12	1	47.4	36.49	28.66	R	13	R					2.6	R				
872	28	3	2009	12	2	26.1	37.91	29.04	R	5	R					2.7	R				
873	28	3	2009	12	34	30.7	36.40	28.66	R	13	R					2.8	R				
874	28	3	2009	12	34	30.7	36.40	28.66	R	13	R					2.8	R				
875	28	3	2009	12	52	15.7	38.48	39.23	R	10	R					2.3	R				
876	28	3	2009	12	59	12.7	39.33	37.99	R	10	R					2.7	R				
877	28	3	2009	13	37	24.9	37.02	29.15	R	10	R					2.6	R				
878	28	3	2009	14	15	17.6	39.91	39.65	R	17	R					2.5	R				
879	28	3	2009	14	59	58.9	40.89	30.39	R	8	R					2.7	R				
880	28	3	2009	15	10	37.4	39.46	26.52	R	11	R					2.6	R				

**TÜRKİYE DEPREM ETKİNLİĞİ ( 2009 YILI MART AYI )**

No	Tarih - Date			Zaman - Time			Koordinat - Coordinate			Derinlik - Depth		Magnitüd - Magnitude									
	Gün	Ay	Yıl	Saat	Dak.	San.	Enlem-K	Boylam-D	Ref	Km.	Ref	Ms	Ref	Mb	Ref	Md	Ref	MI	Ref	Mw	Ref
881	28	3	2009	15	14	15.6	40.53	29.24	R	10	R					2.2	R				
882	28	3	2009	17	28	28.5	37.87	29.04	R	4	R					3.2	R				
883	28	3	2009	18	10	3.6	37.38	36.36	R	6	R					2.6	R				
884	28	3	2009	18	26	53.9	39.65	26.51	R	5	R					2.6	R				
885	28	3	2009	18	40	23.7	37.30	38.64	R	8	R					2.7	R				
886	28	3	2009	19	5	19.9	40.83	31.49	R	6	R					2.7	R				
887	28	3	2009	21	3	54.6	40.81	27.41	R	14	R							1.5	R		
888	28	3	2009	22	6	51.1	40.85	28.31	R	9	R					2.4	R				
889	28	3	2009	22	14	53.4	39.34	37.97	R	4	R					2.9	R				
890	29	3	2009	8	37	52.1	39.08	27.56	R	19	R					2.9	R				
891	29	3	2009	11	6	14.7	38.98	41.56	R	10	R					2.6	R				
892	29	3	2009	16	7	49.2	37.39	27.02	R	3	R					3.4	R				
893	29	3	2009	17	5	42.7	39.94	27.18	R	12	R					3.5	R				
894	29	3	2009	23	8	5.9	38.67	27.72	R	12	R					2.6	R				
895	29	3	2009	23	54	32.9	40.11	33.29	R	6	R					2.9	R				
896	30	3	2009	0	10	17.6	39.41	33.18	R	5	R					2.9	R				
897	30	3	2009	0	26	57.2	39.94	27.16	R	14	R					2.7	R				
898	30	3	2009	3	30	38.3	39.05	26.50	R	19	R					2.8	R				
899	30	3	2009	4	0	6.1	41.02	28.95	R	12	R					2.7	R				
900	30	3	2009	7	11	15.9	37.26	28.24	R	7	R					2.4	R				



**TÜRKİYE DEPREM ETKİNLİĞİ ( 2009 YILI MART AYI )**

No	Tarih - Date			Zaman - Time			Koordinat - Coordinate			Derinlik - Depth		Magnitüd - Magnitude									
	Gün	Ay	Yıl	Saat	Dak.	San.	Enlem-K	Boylam-D	Ref	Km.	Ref	Ms	Ref	Mb	Ref	Md	Ref	MI	Ref	Mw	Ref
901	30	3	2009	8	25	50.5	37.20	28.19	R	5	R					2.2	R				
902	30	3	2009	12	54	21.5	40.51	32.98	R	7	R					2.8	R				
903	30	3	2009	12	57	11.4	37.25	37.24	R	5	R					2.6	R				
904	30	3	2009	13	6	3.7	37.11	27.90	R	5	R					2.2	R				
905	30	3	2009	13	36	58.4	36.41	29.74	R	73	R					3.2	R				
906	30	3	2009	14	11	23.2	39.59	29.27	R	16	R					2.6	R				
907	30	3	2009	14	54	56.9	39.14	29.06	R	5	R					2.9	R				
908	30	3	2009	15	8	18.8	39.11	29.11	R	6	R					2.6	R				
909	30	3	2009	15	57	33.4	39.34	36.70	R	8	R					2.7	R				
910	30	3	2009	17	29	36.8	40.23	27.01	R	3	R					2.7	R				
911	30	3	2009	18	19	4.2	37.60	28.61	R	2	R					2.8	R				
912	30	3	2009	19	48	12.3	37.91	27.34	R	5	R					3.1	R				
913	30	3	2009	20	17	43.8	38.56	27.24	R	6	R					2.8	R				
914	30	3	2009	21	19	30.8	38.78	30.41	R	5	R					3.3	R				
915	30	3	2009	22	22	37.6	38.84	26.09	R	14	R							3.7	R		
916	31	3	2009	0	1	22.0	37.86	27.27	R	5	R					2.6	R				
917	31	3	2009	2	44	2.7	38.36	38.92	R	10	R					2.7	R				
918	31	3	2009	5	17	24.6	38.95	35.68	R	8	R					2.7	R				
919	31	3	2009	5	52	6.5	40.24	27.39	R	14	R					2.5	R				
920	31	3	2009	6	33	19.5	40.49	42.36	R	5	R					2.9	R				

**TÜRKİYE DEPREM ETKİNLİĞİ ( 2009 YILI MART AYI )**

No	Tarih - Date			Zaman - Time			Koordinat - Coordinate			Derinlik - Depth		Magnitüd - Magnitude									
	Gün	Ay	Yıl	Saat	Dak.	San.	Enlem-K	Boylam-D	Ref	Km.	Ref	Ms	Ref	Mb	Ref	Md	Ref	Ml	Ref	Mw	Ref
921	31	3	2009	8	40	51.9	38.90	26.95	R	13	R					3.0	R				
922	31	3	2009	9	29	21.5	38.93	29.97	R	5	R					2.8	R				
923	31	3	2009	9	34	57.5	38.13	32.66	R	5	R					2.6	R				
924	31	3	2009	9	56	58.8	37.13	37.21	R	2	R					2.6	R				
925	31	3	2009	10	0	27.5	37.75	34.62	R	8	R							2.8	R		
926	31	3	2009	10	31	0.1	39.41	28.17	R	15	R					2.9	R				
927	31	3	2009	11	21	10.6	39.42	26.74	R	5	R					2.9	R				
928	31	3	2009	11	59	31.1	37.39	38.58	R	13	R					2.6	R				
929	31	3	2009	12	37	1.2	39.95	27.66	R	12	R					2.6	R				
930	31	3	2009	14	12	12.7	38.56	30.22	R	5	R					2.4	R				
931	31	3	2009	17	33	11.8	39.63	38.01	R	14	R					3.0	R				
932	31	3	2009	20	58	11.7	39.15	29.46	R	5	R					2.8	R				