



*Kandilli Rasathanesi Ve Deprem Araştırma Enstitüsü*

*ULUSAL DEPREM İZLEME MERKEZİ*



*2009 EKİM AYI  
BÜLTENİ*

*YIL: 6 - SAYI: 70  
İSTANBUL*

## **Hazırlayan ve Katkıda Bulunanlar**

*D. Kalafat*

*K. Kekovalı*

*K. Kılıç*

*Y. Güneş*

*M. Yilmazer*

*Z. Öğütcü*

*M. Kara*

*M. Suvarıklı*

*A. Küsmezer*

*F. Kılıçer Bekler*

*P. Deniz*

*A. Berberoğlu*

*M. Çomoğlu*

*M. Berberoğlu*

*H. Gümüş*

*S. Altuncu*

*D.Kepekçi*

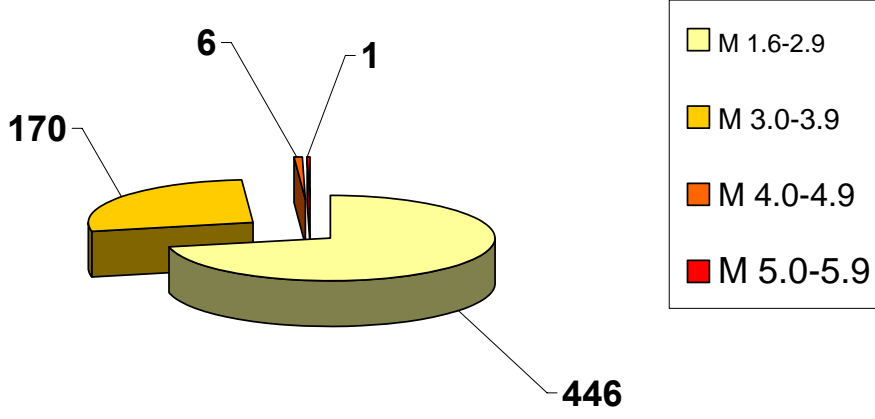
*R.Polat*

*Ö.Çok*

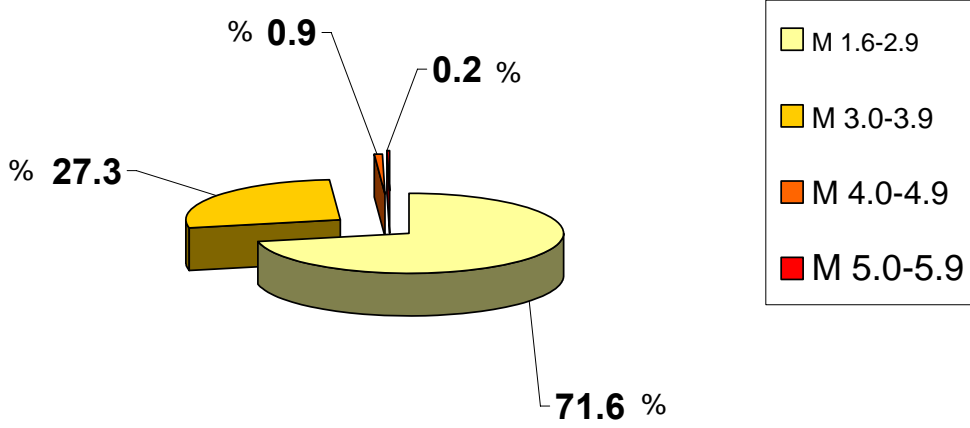
2009 yılı EKİM ayında meydana gelen depremlerin  
istatistiksel dağılımı

<b>MAGNİTÜD ARALIĞI</b>	<b>TOPLAM</b>
1.6-2.9	446
3.0-3.9	170
4.0-4.9	6
5.0-5.9	1
6.0-6.9	—
7.0-7.9	—
<b>TOPLAM</b>	<b>623</b>

**2009 EKİM AYI DEPREMLERİNİN İSTATİSTİKSEL DAĞILIMI**  
(Toplam : 623 Adet )



**2009 EKİM AYI DEPREMLERİNİN İSTATİSTİKSEL DAĞILIMI (%)**



## DEĞERLENDİRME

Ekim ayında toplam 623 depremin çözümlü yapılmıştır. Büyüklüğü 4.0 ve üzerinde olan deprem sayısı 6 dendir. Toplam meydana gelen depremlerin % 71.6 oranını büyüklükleri  $M=1.6-2.9$  arasındaki depremler oluşturmaktadır.

Toplam 98 adet geniş bantlı (Broad Band) istasyonun Ekim ayı içerisindeki çalışma performansları % 80 dir. Bu ay içerisinde 10 adet geniş bantlı (Broad Band) deprem istasyonu verimsiz olmuştur.

Toplam 26 adet kısa periyotlu (SP) istasyonun Ekim ayı içerisindeki çalışma performansları % 94 olup, bütün kısa periyot istasyonlar verimli bir şekilde çalışmıştır.

Bu ay içerisinde, 3 Ekim 2009 tarihinde Aydın'da (AYDB) ve 19 Ekim 2009 tarihinde Hatay'da (TAHT) olmak üzere iki adet uydu iletişimli, geniş bantlı deprem istasyonu montajı yapılarak sinyalleri Udim'e taşınmaya başlanmıştır.

Ekim ayı itibarıyla deprem istasyonlarının ve *sismik ağın ortalama verimlilik performansı % 83* olmuştur.

Ekim ayı içerisinde, büyüklüğü 4.0 ve üzerindeki depremlerin hepsi Türkiye'nin yakın çevresinde meydana gelmiştir. En büyüğü, 13.10.2009 saat 00:54 (GMT)'de  $M=5.1$  İran'da meydana gelmiştir. Bundan başka; 04.10.2009 saat 07:14 (GMT)'de  $M=4.5$  Akdeniz, 04.10.2009 saat 14:13 (GMT)  $M=4.2$  Akdeniz, 07.10.2009 saat 23:44 (GMT)  $M=4.1$  Ege Denizi, 23.10.2009 saat 05:15 (GMT)  $M=4.1$  Akdeniz, 14.10.2009 saat 20:59 (GMT)  $M=4.0$  Akdeniz, 24.10.2009 saat 03:19 (GMT)  $M=4.0$  Akdeniz olan orta büyüklükte deprem aktiviteleri meydana gelmiştir.

Ayrıca, Çınarcık-Yalova, Tekirdağ açıkları-Marmara Denizi'nde, Aliğa-Bergama-İzmir, Soma-Kırkağaç-Manisa, Didim açıkları, Oniki Adalar bölgesinde, Gökova Körfezi-Muğla, Girit adası güneyi-Akdeniz, Simav-Kütahya, Honaz-Denizli, Afşar-Bala-Ankara, Konya, Kozan-Adana, Kıbrıs'ın güneyinde meydana gelen deprem etkinlikleri dikkat çekmektedir. Erzincan, Varto-Muş, Adıyaman, Doğu Anadolu Fay Zonu boyunca ise Sivrice-Elazığ ve Malatya'da deprem etkinlikleri gözlenmiştir.

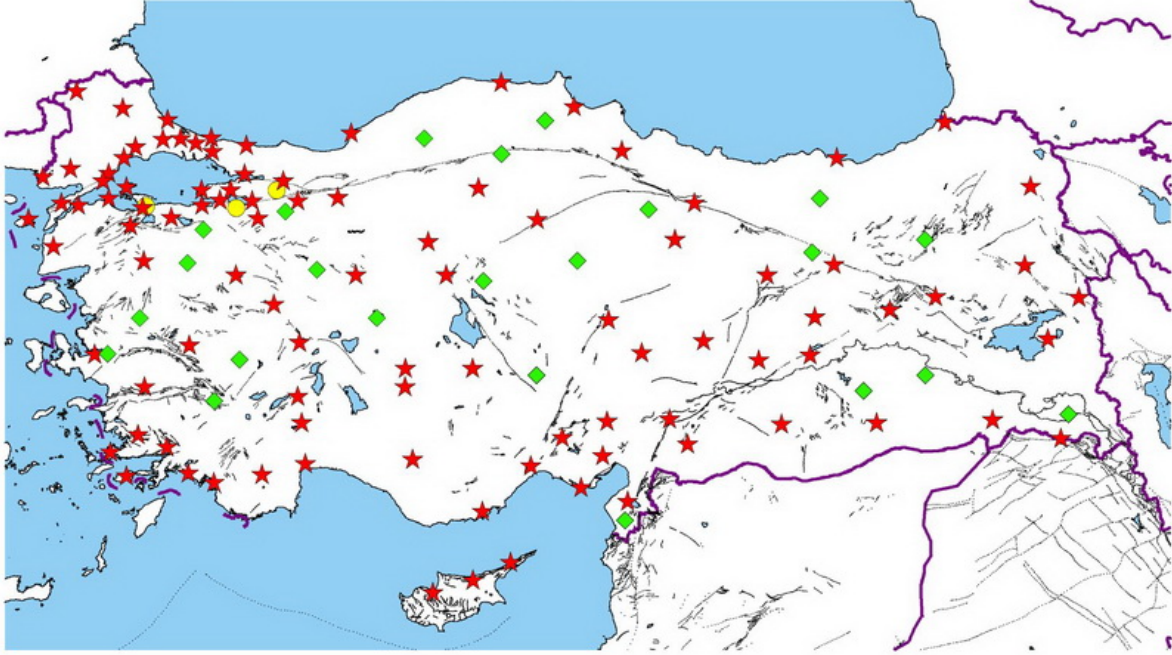
EKİM 2009

İSTASYON VERİMLİLİK

TABLoları

B.Ü.  
KANDİLLİ RASATHANESİ VE DEPREM ARAŞTIRMA ENSTİTÜSÜ  
ULUSAL DEPREM İZLEME MERKEZİ  
DEPREM İSTASYONLARI

Ekim 2009  
Toplam: 124 Adet



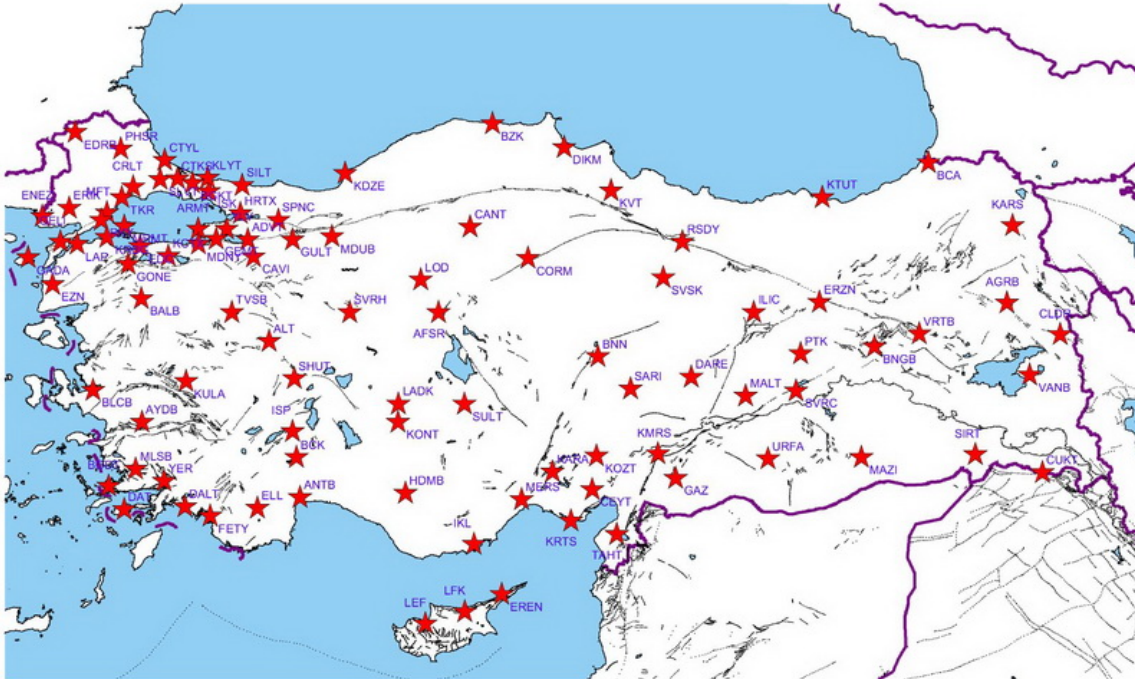
★ GENİŞ BAND

◆ KISA PERİYOT

● TELEMETRİ KISA PERİYOT

**BROAD BAND DEPREM İSTASYONLARI**

Ekim 2009  
98 Adet



Adet	Yöntem	Kod	(+)adet	(-)adet	TOPLAM GENİ	(+)%	(-)%	(+)%	(-)%
1	1	ADVT	31	0	31	100	0		
2	2	AFSR	31	0	31	100	0		
3	3	AGRB	31	0	31	100	0		
4	4	ALT	0	31	31	0	100		
5	5	ANTB	14	17	31	45	55		
6	6	ARMT	31	0	31	100	0		
7	7	AYDB	29	0	29	100	0		
8	8	BALB	30	1	31	97	3		
9	9	BCA	31	0	31	100	0		
10	10	BCK	31	0	31	100	0		
11	11	BGKT	31	0	31	100	0		
12	12	BLCB	10	21	31	32	68		
13	13	BNGB	31	0	31	100	0		
14	14	BNN	31	0	31	100	0		
15	15	BODT	31	0	31	100	0		
16	16	BZK	27	4	31	87	13		
17	17	CANT	31	0	31	100	0		
18	18	CAVI	31	0	31	100	0		
19	19	CEYT	23	8	31	74	26		
20	20	CLDR	31	0	31	100	0		
21	21	CORM	31	0	31	100	0		
22	22	CRLT	26	5	31	84	16		
23	23	CTKS	31	0	31	100	0		
24	24	CTYL	30	1	31	97	3		
25	25	CUKT	31	0	31	100	0		
26	26	DALY	31	0	31	100	0		
27	27	DARE	29	2	31	94	6		
28	28	DAT	31	0	31	100	0		
29	29	DIKM	31	0	31	100	0		
30	30	EDC	0	31	31	61	39		
31	31	EDRB	19	12	31	61	39		
32	32	ELL	31	0	31	100	0		
33	33	ENEZ	14	17	31	45	55		
34	34	EREN	31	0	31	100	0		
35	35	ERIK	16	15	31	52	48		
36	36	ERZN	31	0	31	100	0		
37	37	EZN	11	20	31	35	65		
38	38	FETY	31	0	31	100	0		
39	39	GADA	0	31	31	0	100		
40	40	GAZ	0	31	31	0	100		
41	41	GELI	15	16	31	48	52		
42	42	GEMT	31	0	31	100	0		
43	43	GONE	31	0	31	100	0		
44	44	GULT	31	0	31	100	0		
45	45	HDMB	31	0	31	100	0		
46	46	HRTX	31	0	31	100	0		
47	47	IKL	31	0	31	100	0		
48	48	ILIC	31	0	31	100	0		
49	49	ISK	30	1	31	97	3		
50	50	ISP	30	1	31	97	3		
51	51	KARA	30	1	31	97	3		
52	52	KARS	31	0	31	100	0		
53	53	KCTX	31	0	31	100	0		
54	54	KDZE	31	0	31	100	0		
55	55	KLYT	31	0	31	100	0		
56	56	KMRS	31	0	31	100	0		
57	57	KONT	31	0	31	100	0		
58	58	KOZT	31	0	31	100	0		
59	59	KRBG	31	0	31	100	0		
60	60	KRTS	14	17	31	45	55		
61	61	KTUT	10	21	31	32	68		
62	62	KULA	31	0	31	100	0		
63	63	KVT	31	0	31	100	0		
64	64	LADK	16	15	31	52	48		
65	65	LAP	30	1	31	97	3		
66	66	LEF	31	0	31	100	0		
67	67	LFK	31	0	31	100	0		
68	68	LOD	13	18	31	42	58		
69	69	MALT	31	0	31	100	0		
70	70	MAZI	31	0	31	100	0		
71	71	MDUB	31	0	31	100	0		
72	72	MDYN	31	0	31	100	0		
73	73	MERS	13	18	31	42	58		
74	74	MFTX	0	31	31	0	100		
75	75	MLSB	0	31	31	0	100		
76	76	MRMT	0	31	31	0	100		
77	77	PHSR	31	0	31	100	0		
78	78	PTK	31	0	31	100	0		
79	79	RKY	31	0	31	100	0		
80	80	RSDY	31	0	31	100	0		
81	81	SARIZ	0	31	31	0	100		
82	82	SHUT	19	12	31	61	39		
83	83	SILT	30	1	31	97	3		
84	84	SIRT	31	0	31	100	0		
85	85	SPNC	31	0	31	100	0		
86	86	SLVT	31	0	31	100	0		
87	87	SULT	31	0	31	100	0		
88	88	SVRC	0	31	31	0	100		
89	89	SVRH	31	0	31	100	0		
90	90	SVSK	31	0	31	100	0		
91	91	TAHT	13	0	13	100	0		
92	92	TKR	31	0	31	100	0		
93	93	TVSB	28	3	31	90	10		
94	94	URFA	16	15	31	52	48		
95	95	VANB	0	31	31	0	100		
96	96	VRTB	31	0	31	100	0		
97	97	YER	30	1	31	97	3		
98	98	YLVX	0	31	31	0	100		

GENİŞ BANTLI (BROAD-BAND) İSTASYONLAR

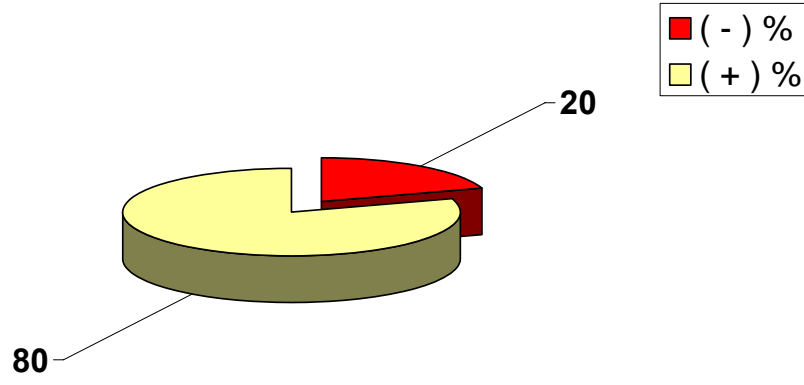
80

20

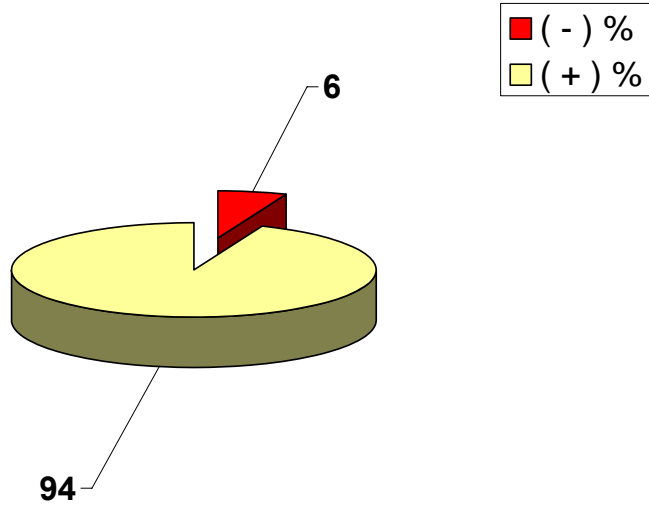


99	1	KISA PERİYOT (SHORT PERIOD) İSTASYONLAR	AKS	31	0	31	100	0	94	6	
100	2		BNT	31	0	31	100	0			
101	3		BTMT	31	0	31	100	0			
102	4		BYBT	24	7	31	77	23			
103	5		DENT	30	1	31	97	3			
104	6		DIY	30	1	31	97	3			
105	7		DST	26	5	31	84	16			
106	8		ESKT	31	0	31	100	0			
107	9		EYL	27	4	31	87	13			
108	10		EZC	31	0	31	100	0			
109	11		EZM	31	0	31	100	0			
110	12		GPA	31	0	31	100	0			
111	13		GUMT	31	0	31	100	0			
112	14		HKR	19	12	31	61	39			
113	15		HTY	31	0	31	100	0			
114	16		IZI	31	0	31	100	0			
115	17		IZM	30	1	31	97	3			
116	18		KAMT	22	9	31	71	29			
117	19		KHL	30	1	31	97	3			
118	20		KIZT	31	0	31	100	0			
119	21		NIG	31	0	31	100	0			
120	22		ORLT	27	4	31	87	13			
121	23		SAFT	31	0	31	100	0			
122	24		TOKT	27	4	31	87	13			
123	25		TOS	31	0	31	100	0			
124	26		YOZ	31	0	31	100	0			
								<b>+</b>	<b>(-)</b>		
2009 EKİM ORTALAMA %								<b>83</b>	<b>17</b>		

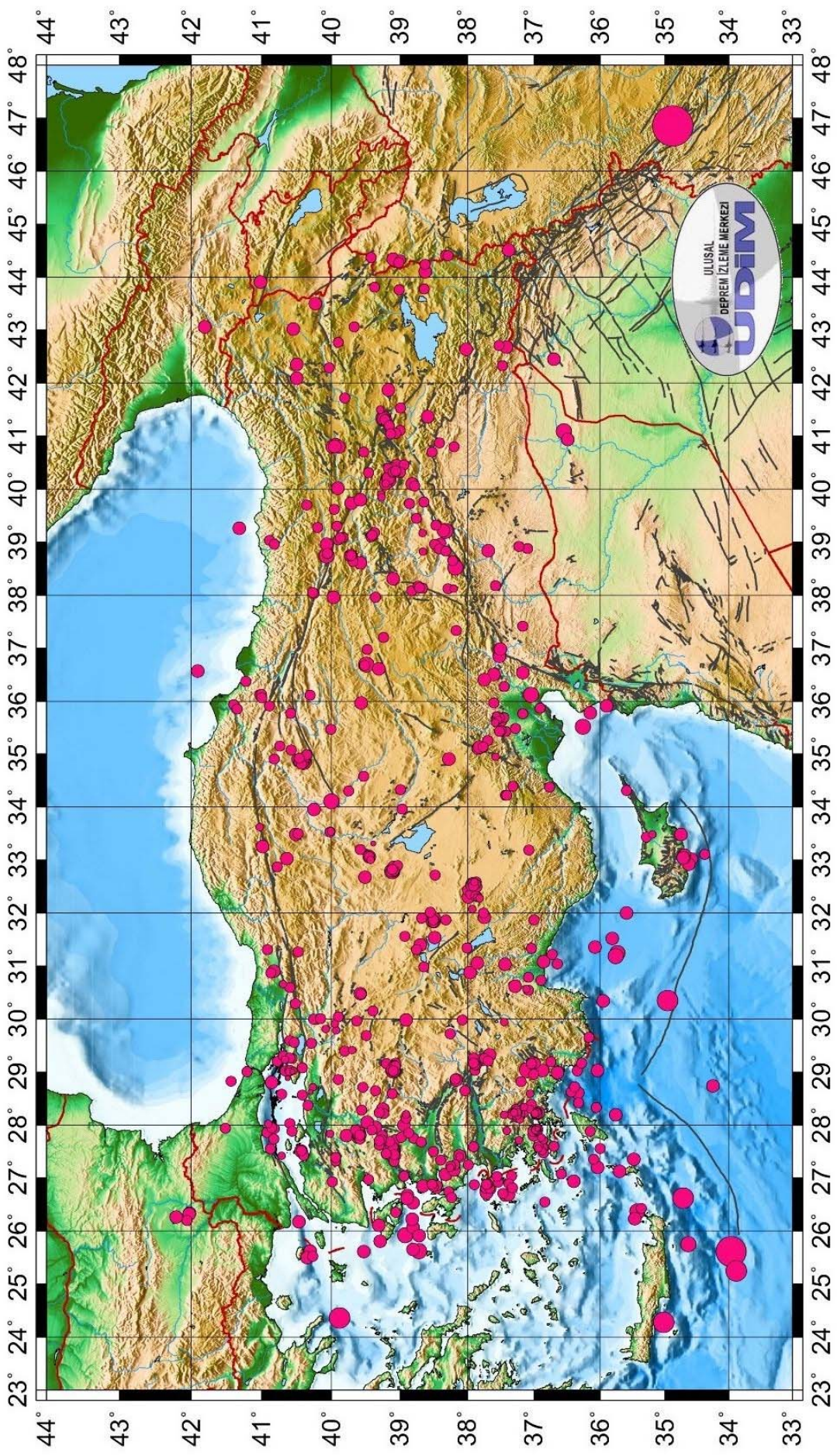
2009 EKİM AYI BROAD-BAND İSTASYONLARI VERİMLİLİK GRAFİĞİ



2009 EKİM AYI SHORT PERIOD İSTASYONLARI VERİMLİLİK GRAFİĞİ



**TÜRKİYE VE YAKIN ÇEVRESİ DEPREM ETKİNLİĞİ ( EKİM 2009 ) Toplam : 623 Adet**



**TÜRKİYE DEPREM ETKİNLİĞİ ( 2009 YILI EKİM AYI )**

No	Tarih - Date			Zaman - Time			Koordinat - Coordinate			Derinlik - Depth		Magnitüd - Magnitude									
	Gün	Ay	Yıl	Saat	Dak.	San.	Enlem-K	Boylam-D	Ref	Km.	Ref	Ms	Ref	Mb	Ref	Md	Ref	MI	Ref	Mw	Ref
1	1	10	2009	0	35	58.2	40.42	34.84	R	5	R					<b>3.3</b>	R				
2	1	10	2009	1	30	59.8	39.40	30.15	R	5	R					<b>2.8</b>	R				
3	1	10	2009	2	51	31.9	40.49	34.86	R	5	R					<b>2.5</b>	R				
4	1	10	2009	7	39	20.0	37.35	28.18	R	3	R					<b>2.4</b>	R				
5	1	10	2009	8	56	25.9	35.29	33.43	R	6	R					<b>2.5</b>	R				
6	1	10	2009	9	23	6.5	37.30	28.21	R	3	R					<b>2.6</b>	R				
7	1	10	2009	10	20	4.5	37.73	26.81	R	12	R					<b>2.9</b>	R				
8	1	10	2009	11	4	29.3	38.40	38.98	R	9	R					<b>2.7</b>	R				
9	1	10	2009	11	40	10.5	40.45	34.87	R	8	R					<b>2.7</b>	R				
10	1	10	2009	12	17	9.3	39.81	29.40	R	11	R					<b>2.6</b>	R				
11	1	10	2009	12	22	33.8	40.58	35.08	R	2	R					<b>2.5</b>	R				
12	1	10	2009	12	25	38.2	40.72	27.42	R	13	R					<b>2.3</b>	R				
13	1	10	2009	14	52	22.8	37.23	27.71	R	5	R					<b>2.2</b>	R				
14	1	10	2009	14	55	49.9	38.99	34.33	R	6	R					<b>2.9</b>	R				
15	1	10	2009	16	16	27.5	37.20	28.82	R	8	R					<b>2.8</b>	R				
16	1	10	2009	16	45	24.8	40.50	34.91	R	5	R					<b>2.7</b>	R				
17	1	10	2009	18	12	30.0	37.41	27.89	R	17	R					<b>2.4</b>	R				
18	1	10	2009	18	41	48.8	39.39	33.31	R	22	R					<b>1.9</b>	R				
19	1	10	2009	20	48	31.8	40.30	28.62	R	6	R					<b>1.7</b>	R				
20	1	10	2009	23	22	41.0	39.42	44.37	R	5	R					<b>2.9</b>	R				

**TÜRKİYE DEPREM ETKİNLİĞİ ( 2009 YILI EKİM AYI )**

No	Tarih - Date			Zaman - Time			Koordinat - Coordinate			Derinlik - Depth		Magnitüd - Magnitude										
	Gün	Ay	Yıl	Saat	Dak.	San.	Enlem-K	Boylam-D	Ref	Km.	Ref	Ms	Ref	Mb	Ref	Md	Ref	MI	Ref	Mw	Ref	
21	1	10	2009	23	28	54.6	40.72	29.24	R	13	R					2.5	R					
22	1	10	2009	23	44	17.5	41.91	36.57	R	6	R					3.0	R					
23	2	10	2009	0	5	57.6	40.47	34.86	R	8	R					2.5	R					
24	2	10	2009	0	10	54.4	38.00	32.43	R	14	R					2.6	R					
25	2	10	2009	0	17	17.8	39.21	41.29	R	4	R					3.3	R					
26	2	10	2009	2	29	50.0	39.62	27.79	R	3	R					2.7	R					
27	2	10	2009	2	31	44.3	39.61	27.81	R	7	R					2.8	R					
28	2	10	2009	2	44	13.7	39.36	28.65	R	3	R					2.9	R					
29	2	10	2009	2	58	10.6	37.86	32.31	R	21	R					2.6	R					
30	2	10	2009	3	41	54.2	37.95	32.36	R	9	R					2.5	R					
31	2	10	2009	10	1	47.9	37.90	26.87	R	6	R					2.8	R					
32	2	10	2009	17	42	4.4	37.86	32.29	R	2	R					2.4	R					
33	2	10	2009	19	51	18.6	39.58	38.61	R	5	R					3.4	R					
34	2	10	2009	20	5	28.7	37.82	32.28	R	4	R					2.4	R					
35	2	10	2009	20	9	49.6	40.63	28.88	R	14	R					1.9	R					
36	2	10	2009	23	34	27.1	40.67	29.23	R	5	R					2.3	R					
37	2	10	2009	23	38	2.6	40.89	39.03	R	8	R					2.5	R					
38	2	10	2009	23	46	20.7	37.84	35.11	R	5	R					3.1	R					
39	3	10	2009	0	41	22.3	38.49	31.54	R	9	R					3.0	R					
40	3	10	2009	0	43	59.0	39.24	41.33	R	6	R							3.8	R			

**TÜRKİYE DEPREM ETKİNLİĞİ ( 2009 YILI EKİM AYI )**

No	Tarih - Date			Zaman - Time			Koordinat - Coordinate			Derinlik - Depth		Magnitüd - Magnitude										
	Gün	Ay	Yıl	Saat	Dak.	San.	Enlem-K	Boylam-D	Ref	Km.	Ref	Ms	Ref	Mb	Ref	Md	Ref	MI	Ref	Mw	Ref	
41	3	10	2009	1	45	15.5	39.20	41.26	R	14	R					2.8	R					
42	3	10	2009	1	47	29.6	39.29	41.50	R	23	R					2.4	R					
43	3	10	2009	1	48	57.3	39.28	39.90	R	10	R					2.3	R					
44	3	10	2009	2	0	21.8	40.48	31.27	R	28	R					2.9	R					
45	3	10	2009	2	35	5.1	39.22	41.31	R	7	R					2.9	R					
46	3	10	2009	2	40	34.9	37.75	31.92	R	5	R					3.2	R					
47	3	10	2009	3	42	40.0	39.06	27.73	R	10	R					2.8	R					
48	3	10	2009	5	5	29.2	38.98	27.77	R	24	R					2.6	R					
49	3	10	2009	5	49	14.1	39.62	27.87	R	11	R							3.6	R			
50	3	10	2009	7	51	55.8	37.53	42.71	R	5	R					2.5	R					
51	3	10	2009	8	57	9.5	37.25	28.14	R	5	R					2.6	R					
52	3	10	2009	9	47	39.8	37.70	35.26	R	5	R					2.9	R					
53	3	10	2009	10	39	35.4	40.38	34.93	R	10	R					2.8	R					
54	3	10	2009	10	46	11.2	39.70	29.41	R	10	R					2.4	R					
55	3	10	2009	10	51	35.4	40.22	29.99	R	8	R					2.6	R					
56	3	10	2009	11	23	40.4	40.08	29.81	R	5	R					2.3	R					
57	3	10	2009	12	36	11.7	38.67	38.13	R	22	R					2.8	R					
58	3	10	2009	13	50	55.6	40.93	27.86	R	8	R					2.6	R					
59	3	10	2009	13	56	31.9	41.23	36.37	R	9	R					2.9	R					
60	3	10	2009	15	52	21.3	38.76	39.45	R	7	R					2.9	R					

**TÜRKİYE DEPREM ETKİNLİĞİ ( 2009 YILI EKİM AYI )**

No	Tarih - Date			Zaman - Time			Koordinat - Coordinate			Derinlik - Depth		Magnitüd - Magnitude									
	Gün	Ay	Yıl	Saat	Dak.	San.	Enlem-K	Boylam-D	Ref	Km.	Ref	Ms	Ref	Mb	Ref	Md	Ref	MI	Ref	Mw	Ref
61	3	10	2009	18	52	36.6	39.78	27.80	R	7	R					3.0	R				
62	3	10	2009	18	55	2.0	36.40	26.94	R	87	R					3.0	R				
63	3	10	2009	19	23	5.9	40.36	34.99	R	6	R					2.7	R				
64	3	10	2009	19	25	18.2	39.10	32.80	R	5	R					3.1	R				
65	3	10	2009	20	29	25.4	37.88	32.32	R	13	R					2.7	R				
66	3	10	2009	21	32	59.8	37.76	32.00	R	17	R					2.6	R				
67	3	10	2009	23	7	1.7	37.39	44.51	R	2	R					3.1	R				
68	4	10	2009	2	54	4.3	37.49	35.62	R	8	R					2.8	R				
69	4	10	2009	4	36	18.9	38.94	28.00	R	4	R					3.2	R				
70	4	10	2009	4	43	44.0	37.67	26.80	R	5	R					3.3	R				
71	4	10	2009	5	3	54.5	39.27	39.85	R	16	R					2.2	R				
72	4	10	2009	7	14	6.2	33.97	25.61	N	20	N			4.5	N						
73	4	10	2009	7	47	35.2	39.07	27.52	R	15	R					2.8	R				
74	4	10	2009	7	58	47.3	37.27	28.16	R	8	R					2.4	R				
75	4	10	2009	11	47	19.5	37.67	26.81	R	8	R					2.9	R				
76	4	10	2009	12	22	10.8	37.89	29.11	R	9	R					2.9	R				
77	4	10	2009	14	13	31.3	33.89	25.25	N	30	N			4.2	N						
78	4	10	2009	15	50	1.7	37.72	26.72	R	5	R					3.2	R				
79	4	10	2009	16	5	42.1	38.12	27.42	R	6	R					3.0	R				
80	4	10	2009	18	9	55.1	38.12	27.40	R	9	R					2.3	R				

**TÜRKİYE DEPREM ETKİNLİĞİ ( 2009 YILI EKİM AYI )**

No	Tarih - Date			Zaman - Time			Koordinat - Coordinate			Derinlik - Depth		Magnitüd - Magnitude									
	Gün	Ay	Yıl	Saat	Dak.	San.	Enlem-K	Boylam-D	Ref	Km.	Ref	Ms	Ref	Mb	Ref	Md	Ref	MI	Ref	Mw	Ref
81	4	10	2009	19	19	43.8	36.34	28.61	R	30	R					3.3	R				
82	4	10	2009	19	36	2.8	40.91	28.02	R	7	R					2.2	R				
83	4	10	2009	20	56	0.0	40.43	34.81	R	3	R					2.8	R				
84	4	10	2009	22	36	21.2	40.00	34.11	R	3	R					3.6	R				
85	4	10	2009	23	25	32.0	36.65	28.99	R	22	R					3.0	R				
86	4	10	2009	23	29	54.4	40.02	27.83	R	12	R					2.4	R				
87	5	10	2009	0	25	21.4	38.81	26.53	R	8	R					3.1	R				
88	5	10	2009	1	14	50.0	40.83	30.90	R	3	R					3.2	R				
89	5	10	2009	1	58	8.7	38.33	39.21	R	11	R					3.7	R				
90	5	10	2009	2	23	55.0	39.24	41.32	R	2	R					3.1	R				
91	5	10	2009	3	29	34.3	40.47	26.17	R	8	R					3.4	R				
92	5	10	2009	3	43	31.8	38.80	27.75	R	17	R					2.7	R				
93	5	10	2009	4	10	50.3	37.91	27.59	R	8	R					2.6	R				
94	5	10	2009	6	25	52.7	37.87	32.59	R	6	R					2.5	R				
95	5	10	2009	7	46	55.5	40.89	35.91	R	9	R					2.6	R				
96	5	10	2009	8	3	8.7	39.14	27.55	R	8	R					2.6	R				
97	5	10	2009	8	49	16.5	39.24	28.22	R	7	R					2.7	R				
98	5	10	2009	8	50	4.3	39.20	40.14	R	5	R					3.2	R				
99	5	10	2009	9	15	10.3	37.26	28.29	R	15	R					2.4	R				
100	5	10	2009	9	15	39.7	39.10	27.47	R	10	R					2.6	R				



**TÜRKİYE DEPREM ETKİNLİĞİ ( 2009 YILI EKİM AYI )**

No	Tarih - Date			Zaman - Time			Koordinat - Coordinate			Derinlik - Depth		Magnitüd - Magnitude									
	Gün	Ay	Yıl	Saat	Dak.	San.	Enlem-K	Boylam-D	Ref	Km.	Ref	Ms	Ref	Mb	Ref	Md	Ref	MI	Ref	Mw	Ref
101	5	10	2009	9	28	9.5	37.48	42.33	R	5	R							<b>2.5</b>	R		
102	5	10	2009	9	38	22.4	37.24	28.18	R	6	R					<b>2.8</b>	R				
103	5	10	2009	10	18	41.0	39.21	40.11	R	8	R					<b>3.1</b>	R				
104	5	10	2009	10	19	18.0	36.33	28.42	R	8	R					<b>2.6</b>	R				
105	5	10	2009	10	43	45.0	40.55	29.02	R	5	R					<b>2.3</b>	R				
106	5	10	2009	10	50	35.7	35.19	33.48	R	5	R					<b>2.2</b>	R				
107	5	10	2009	10	50	59.7	40.61	29.02	R	13	R					<b>2.9</b>	R				
108	5	10	2009	12	7	44.4	39.24	37.20	R	9	R					<b>2.6</b>	R				
109	5	10	2009	13	50	14.7	40.36	39.70	R	12	R					<b>2.6</b>	R				
110	5	10	2009	15	9	20.4	39.54	28.71	R	4	R					<b>2.9</b>	R				
111	5	10	2009	15	11	5.2	37.43	35.43	R	22	R					<b>2.9</b>	R				
112	5	10	2009	16	42	19.3	36.49	40.94	R	5	R					<b>3.3</b>	R				
113	5	10	2009	17	30	9.2	38.66	26.85	R	5	R					<b>3.0</b>	R				
114	5	10	2009	17	54	25.1	35.73	31.24	R	12	R					<b>3.5</b>	R				
115	5	10	2009	19	33	41.1	37.91	29.27	R	10	R					<b>2.7</b>	R				
116	6	10	2009	0	10	52.7	39.99	26.93	R	22	R					<b>2.8</b>	R				
117	6	10	2009	2	0	12.6	35.90	35.91	R	8	R					<b>3.1</b>	R				
118	6	10	2009	3	7	52.8	39.65	27.91	R	5	R					<b>2.8</b>	R				
119	6	10	2009	3	20	40.6	39.17	40.17	R	3	R							<b>3.5</b>	R		
120	6	10	2009	6	14	48.3	38.67	39.17	R	31	R					<b>2.4</b>	R				

**TÜRKİYE DEPREM ETKİNLİĞİ ( 2009 YILI EKİM AYI )**

No	Tarih - Date			Zaman - Time			Koordinat - Coordinate			Derinlik - Depth		Magnitüd - Magnitude									
	Gün	Ay	Yıl	Saat	Dak.	San.	Enlem-K	Boylam-D	Ref	Km.	Ref	Ms	Ref	Mb	Ref	Md	Ref	MI	Ref	Mw	Ref
121	6	10	2009	7	8	8.4	36.75	29.19	R	5	R					2.7	R				
122	6	10	2009	7	18	27.7	37.24	28.17	R	3	R					2.5	R				
123	6	10	2009	7	34	21.1	36.08	31.36	R	30	R					3.3	R				
124	6	10	2009	10	20	28.0	39.61	27.77	R	5	R					3.0	R				
125	6	10	2009	10	48	39.9	40.60	29.59	R	12	R					2.5	R				
126	6	10	2009	14	49	47.5	37.33	28.22	R	11	R					2.7	R				
127	6	10	2009	15	5	54.6	37.27	28.30	R	5	R					2.7	R				
128	6	10	2009	17	37	50.8	39.25	28.30	R	5	R					3.0	R				
129	6	10	2009	17	44	56.6	39.30	28.23	R	12	R					2.9	R				
130	6	10	2009	22	58	11.8	39.75	34.30	R	7	R					2.8	R				
131	7	10	2009	1	22	56.7	38.63	44.10	R	5	R					3.4	R				
132	7	10	2009	1	27	30.2	38.64	43.78	R	4	R					2.8	R				
133	7	10	2009	1	29	48.2	38.63	44.24	R	10	R					2.9	R				
134	7	10	2009	4	45	12.5	39.59	27.74	R	6	R					2.9	R				
135	7	10	2009	5	39	38.8	38.81	26.07	R	12	R					3.2	R				
136	7	10	2009	6	14	47.2	38.78	40.06	R	18	R					2.6	R				
137	7	10	2009	6	17	5.0	36.86	27.55	R	4	R					2.6	R				
138	7	10	2009	9	5	59.9	39.56	28.28	R	8	R					2.7	R				
139	7	10	2009	9	28	20.4	39.08	27.55	R	16	R					2.6	R				
140	7	10	2009	9	41	6.0	38.47	39.32	R	14	R					2.6	R				

**TÜRKİYE DEPREM ETKİNLİĞİ ( 2009 YILI EKİM AYI )**

No	Tarih - Date			Zaman - Time			Koordinat - Coordinate			Derinlik - Depth		Magnitüd - Magnitude									
	Gün	Ay	Yıl	Saat	Dak.	San.	Enlem-K	Boylam-D	Ref	Km.	Ref	Ms	Ref	Mb	Ref	Md	Ref	MI	Ref	Mw	Ref
141	7	10	2009	9	50	6.4	38.32	31.87	R	5	R					2.7	R				
142	7	10	2009	11	38	58.7	40.07	38.96	R	5	R					3.0	R				
143	7	10	2009	11	48	14.5	37.82	35.13	R	6	R					3.0	R				
144	7	10	2009	12	53	41.3	35.43	26.37	R	21	R							3.5	R		
145	7	10	2009	13	37	30.8	39.10	29.05	R	8	R					2.6	R				
146	7	10	2009	13	44	31.3	38.49	38.96	R	5	R					2.5	R				
147	7	10	2009	14	40	27.9	37.24	28.21	R	5	R					2.6	R				
148	7	10	2009	15	8	53.4	39.08	27.50	R	12	R					2.7	R				
149	7	10	2009	16	38	23.8	40.27	28.71	R	5	R					2.4	R				
150	7	10	2009	16	49	29.0	41.44	28.83	R	10	R					2.6	R				
151	7	10	2009	19	54	23.4	34.25	28.74	R	22	R							3.4	R		
152	7	10	2009	23	44	40.3	39.88	24.36	R	22	R							4.1	R		
153	8	10	2009	3	2	51.5	39.10	29.05	R	8	R					2.6	R				
154	8	10	2009	5	16	42.6	36.15	27.88	R	18	R					2.6	R				
155	8	10	2009	8	11	40.3	38.04	28.65	R	9	R					2.9	R				
156	8	10	2009	9	23	24.5	39.06	27.42	R	8	R					2.7	R				
157	8	10	2009	10	5	36.1	39.90	28.86	R	13	R					2.6	R				
158	8	10	2009	10	21	59.4	38.33	27.07	R	20	R					3.0	R				
159	8	10	2009	11	4	10.0	41.21	29.01	R	6	R					2.6	R				
160	8	10	2009	14	25	7.6	41.03	36.12	R	6	R					2.6	R				

**TÜRKİYE DEPREM ETKİNLİĞİ ( 2009 YILI EKİM AYI )**

No	Tarih - Date			Zaman - Time			Koordinat - Coordinate			Derinlik - Depth		Magnitüd - Magnitude									
	Gün	Ay	Yıl	Saat	Dak.	San.	Enlem-K	Boylam-D	Ref	Km.	Ref	Ms	Ref	Mb	Ref	Md	Ref	MI	Ref	Mw	Ref
161	8	10	2009	14	27	9.6	41.01	36.13	R	7	R					2.6	R				
162	8	10	2009	14	32	12.5	38.46	26.80	R	5	R					2.6	R				
163	8	10	2009	14	38	47.0	39.90	39.04	R	8	R					2.6	R				
164	8	10	2009	14	42	13.6	37.26	28.19	R	5	R					2.8	R				
165	8	10	2009	14	53	26.7	38.21	38.12	R	17	R					2.4	R				
166	8	10	2009	14	56	40.9	38.20	40.80	R	5	R					2.6	R				
167	8	10	2009	15	7	15.6	39.20	27.60	R	9	R					2.6	R				
168	8	10	2009	15	58	45.2	40.56	29.01	R	4	R					1.6	R				
169	8	10	2009	16	36	17.3	39.21	40.11	R	4	R					2.4	R				
170	8	10	2009	16	58	4.1	36.44	28.62	R	14	R					2.5	R				
171	8	10	2009	18	46	21.0	39.48	36.97	R	5	R					2.8	R				
172	8	10	2009	19	36	52.2	37.54	26.92	R	16	R					2.5	R				
173	8	10	2009	19	49	31.7	37.86	29.16	R	5	R					2.6	R				
174	8	10	2009	22	40	26.8	37.04	28.39	R	11	R					2.5	R				
175	8	10	2009	23	0	53.0	35.47	26.23	R	13	R					3.2	R				
176	8	10	2009	23	3	30.9	35.37	26.43	R	32	R					2.8	R				
177	8	10	2009	23	41	46.2	38.42	40.87	R	5	R					2.6	R				
178	8	10	2009	23	49	55.1	37.29	30.62	R	7	R					3.0	R				
179	9	10	2009	1	11	16.7	38.33	44.41	R	11	R					2.9	R				
180	9	10	2009	2	15	23.5	38.29	44.40	R	10	R					2.8	R				

**TÜRKİYE DEPREM ETKİNLİĞİ ( 2009 YILI EKİM AYI )**

No	Tarih - Date			Zaman - Time			Koordinat - Coordinate			Derinlik - Depth		Magnitüd - Magnitude									
	Gün	Ay	Yıl	Saat	Dak.	San.	Enlem-K	Boylam-D	Ref	Km.	Ref	Ms	Ref	Mb	Ref	Md	Ref	MI	Ref	Mw	Ref
181	9	10	2009	2	57	5.5	38.83	38.08	R	6	R					2.9	R				
182	9	10	2009	4	17	35.8	39.46	26.97	R	7	R					2.7	R				
183	9	10	2009	7	13	6.2	38.91	28.13	R	5	R					2.6	R				
184	9	10	2009	8	28	35.2	39.07	27.53	R	18	R					2.7	R				
185	9	10	2009	8	40	39.9	38.69	27.68	R	5	R					2.5	R				
186	9	10	2009	9	8	2.3	37.22	28.10	R	5	R					2.4	R				
187	9	10	2009	9	35	5.1	39.57	27.81	R	6	R					2.7	R				
188	9	10	2009	9	55	53.2	37.27	28.25	R	5	R					2.6	R				
189	9	10	2009	10	6	34.7	39.14	27.57	R	7	R					2.6	R				
190	9	10	2009	11	26	20.7	40.26	30.00	R	8	R					2.6	R				
191	9	10	2009	11	33	35.3	40.42	29.08	R	5	R					2.7	R				
192	9	10	2009	12	20	37.8	37.00	31.87	R	2	R					2.6	R				
193	9	10	2009	13	14	3.6	40.82	38.96	R	5	R					2.5	R				
194	9	10	2009	14	33	30.6	39.09	29.05	R	5	R					3.0	R				
195	9	10	2009	15	7	48.2	41.03	33.62	R	16	R					2.4	R				
196	9	10	2009	18	19	45.6	40.40	34.85	R	5	R					3.6	R				
197	9	10	2009	19	11	41.5	39.10	38.31	R	5	R					3.0	R				
198	9	10	2009	20	8	57.5	40.44	34.89	R	12	R					3.0	R				
199	10	10	2009	0	40	44.2	39.49	36.69	R	5	R							3.9	R		
200	10	10	2009	1	15	51.6	39.96	39.62	R	8	R					2.6	R				

**TÜRKİYE DEPREM ETKİNLİĞİ ( 2009 YILI EKİM AYI )**

No	Tarih - Date			Zaman - Time			Koordinat - Coordinate			Derinlik - Depth		Magnitüd - Magnitude									
	Gün	Ay	Yıl	Saat	Dak.	San.	Enlem-K	Boylam-D	Ref	Km.	Ref	Ms	Ref	Mb	Ref	Md	Ref	MI	Ref	Mw	Ref
201	10	10	2009	3	14	41.2	37.52	36.84	R	13	R					3.1	R				
202	10	10	2009	3	29	23.2	42.21	26.26	R	5	R					3.0	R				
203	10	10	2009	3	43	32.4	40.40	27.43	R	6	R					2.8	R				
204	10	10	2009	5	33	27.0	40.44	27.51	R	7	R							3.2	R		
205	10	10	2009	8	36	48.9	38.45	26.86	R	4	R					2.9	R				
206	10	10	2009	8	48	8.8	39.52	36.67	R	5	R					2.8	R				
207	10	10	2009	9	9	28.3	39.09	27.49	R	8	R					2.7	R				
208	10	10	2009	19	18	2.4	40.34	28.37	R	10	R					2.5	R				
209	10	10	2009	20	30	21.6	34.38	33.11	R	5	R					2.7	R				
210	10	10	2009	21	28	18.2	38.65	39.76	R	2	R					2.8	R				
211	10	10	2009	22	52	19.1	38.82	40.10	R	5	R					3.1	R				
212	10	10	2009	23	1	50.3	38.94	27.04	R	12	R					2.6	R				
213	10	10	2009	23	11	18.4	38.70	31.40	R	5	R					3.1	R				
214	11	10	2009	0	2	19.6	37.86	32.50	R	5	R					2.6	R				
215	11	10	2009	2	37	39.1	38.99	44.32	R	5	R					2.6	R				
216	11	10	2009	2	48	20.5	37.17	36.53	R	7	R					3.1	R				
217	11	10	2009	3	7	19.6	39.10	44.34	R	5	R					3.0	R				
218	11	10	2009	3	42	57.7	38.01	38.24	R	8	R					2.9	R				
219	11	10	2009	4	32	52.6	40.29	29.54	R	5	R					2.7	R				
220	11	10	2009	18	8	14.8	39.69	38.63	R	9	R					2.7	R				

**TÜRKİYE DEPREM ETKİNLİĞİ ( 2009 YILI EKİM AYI )**

No	Tarih - Date			Zaman - Time			Koordinat - Coordinate			Derinlik - Depth		Magnitüd - Magnitude									
	Gün	Ay	Yıl	Saat	Dak.	San.	Enlem-K	Boylam-D	Ref	Km.	Ref	Ms	Ref	Mb	Ref	Md	Ref	MI	Ref	Mw	Ref
221	11	10	2009	18	28	10.6	39.43	33.00	R	4	R					2.3	R				
222	11	10	2009	18	49	55.3	38.91	28.20	R	11	R					2.4	R				
223	11	10	2009	19	34	27.2	39.00	41.11	R	8	R					2.6	R				
224	11	10	2009	20	10	48.5	38.51	26.84	R	8	R					2.5	R				
225	11	10	2009	20	16	25.3	40.60	29.02	R	5	R					2.9	R				
226	11	10	2009	20	40	30.4	39.06	41.05	R	9	R					2.7	R				
227	11	10	2009	20	41	11.0	40.92	31.31	R	8	R					2.8	R				
228	11	10	2009	20	59	13.0	40.67	29.02	R	11	R					2.6	R				
229	11	10	2009	21	36	56.4	38.81	25.65	R	7	R					3.0	R				
230	11	10	2009	22	12	52.0	37.96	30.88	R	5	R					3.1	R				
231	11	10	2009	22	15	13.6	39.09	27.31	R	6	R					2.8	R				
232	11	10	2009	22	37	41.0	40.46	34.92	R	11	R					2.8	R				
233	11	10	2009	23	9	11.0	38.99	41.53	R	8	R					2.6	R				
234	12	10	2009	0	7	56.0	40.78	29.20	R	15	R					2.5	R				
235	12	10	2009	0	15	38.3	40.64	33.03	R	9	R					3.2	R				
236	12	10	2009	0	36	8.4	37.70	26.89	R	16	R					2.9	R				
237	12	10	2009	0	37	16.2	37.72	26.88	R	13	R					2.9	R				
238	12	10	2009	1	39	34.4	38.65	30.98	R	12	R					2.6	R				
239	12	10	2009	2	28	49.2	37.01	28.96	R	8	R					2.7	R				
240	12	10	2009	2	44	2.4	40.87	30.87	R	10	R					2.6	R				

**TÜRKİYE DEPREM ETKİNLİĞİ ( 2009 YILI EKİM AYI )**

No	Tarih - Date			Zaman - Time			Koordinat - Coordinate			Derinlik - Depth		Magnitüd - Magnitude									
	Gün	Ay	Yıl	Saat	Dak.	San.	Enlem-K	Boylam-D	Ref	Km.	Ref	Ms	Ref	Mb	Ref	Md	Ref	MI	Ref	Mw	Ref
241	12	10	2009	3	16	32.4	39.37	39.18	R	8	R					2.6	R				
242	12	10	2009	4	55	1.4	36.87	29.03	R	9	R					3.0	R				
243	12	10	2009	5	33	33.2	40.61	29.01	R	8	R					2.4	R				
244	12	10	2009	7	32	32.6	40.25	38.03	R	10	R					2.8	R				
245	12	10	2009	9	18	30.2	37.16	28.24	R	5	R					2.6	R				
246	12	10	2009	11	10	56.8	40.27	38.05	R	5	R					2.7	R				
247	12	10	2009	11	35	29.4	40.78	32.87	R	7	R					2.7	R				
248	12	10	2009	12	24	25.4	37.51	36.98	R	9	R					3.0	R				
249	12	10	2009	14	8	38.6	41.40	35.93	R	13	R					2.7	R				
250	12	10	2009	14	51	30.0	37.45	36.27	R	5	R					2.6	R				
251	12	10	2009	16	12	2.0	38.72	25.62	R	21	R							3.6	R		
252	12	10	2009	21	59	20.9	38.86	39.72	R	12	R					2.5	R				
253	13	10	2009	0	17	5.5	41.32	39.26	R	6	R					3.0	R				
254	13	10	2009	0	52	59.3	37.08	33.19	R	2	R					2.9	R				
255	13	10	2009	0	54	28.0	34.88	46.85	N	13	N			5.1	N						
256	13	10	2009	2	51	57.4	39.02	44.27	R	5	R					2.9	R				
257	13	10	2009	4	22	56.2	37.05	36.12	R	13	R							3.6	R		
258	13	10	2009	6	49	9.2	37.24	28.23	R	6	R					2.4	R				
259	13	10	2009	7	11	58.4	36.86	27.48	R	5	R					2.8	R				
260	13	10	2009	9	31	31.9	40.57	29.26	R	5	R					2.6	R				



**TÜRKİYE DEPREM ETKİNLİĞİ ( 2009 YILI EKİM AYI )**

No	Tarih - Date			Zaman - Time			Koordinat - Coordinate			Derinlik - Depth		Magnitüd - Magnitude									
	Gün	Ay	Yıl	Saat	Dak.	San.	Enlem-K	Boylam-D	Ref	Km.	Ref	Ms	Ref	Mb	Ref	Md	Ref	MI	Ref	Mw	Ref
261	13	10	2009	9	42	19.1	37.34	27.04	R	17	R					2.8	R				
262	13	10	2009	10	35	52.9	36.88	27.51	R	2	R					2.4	R				
263	13	10	2009	12	56	54.5	37.23	28.15	R	7	R					2.6	R				
264	13	10	2009	20	44	33.2	36.86	27.72	R	5	R					2.4	R				
265	13	10	2009	21	37	21.7	39.17	41.87	R	8	R					3.0	R				
266	14	10	2009	1	41	23.1	37.58	35.67	R	12	R					2.4	R				
267	14	10	2009	9	55	21.4	36.35	29.02	R	8	R					2.6	R				
268	14	10	2009	10	12	0.7	38.26	29.72	R	12	R					2.7	R				
269	14	10	2009	10	33	38.5	38.73	38.17	R	9	R					2.6	R				
270	14	10	2009	12	45	27.5	39.07	29.03	R	4	R					2.9	R				
271	14	10	2009	14	41	31.2	39.37	43.81	R	5	R					2.5	R				
272	14	10	2009	16	45	9.4	39.09	29.07	R	5	R					3.1	R				
273	14	10	2009	16	48	26.4	39.10	29.13	R	15	R					2.6	R				
274	14	10	2009	18	22	26.5	37.57	35.64	R	8	R					2.8	R				
275	14	10	2009	20	59	28.7	34.72	26.62	R	5	R							4.0	R		
276	15	10	2009	0	3	49.2	37.56	35.67	R	9	R					2.5	R				
277	15	10	2009	0	51	54.0	39.45	33.06	R	5	R					3.0	R				
278	15	10	2009	2	29	5.1	39.71	39.73	R	5	R					3.0	R				
279	15	10	2009	5	36	23.2	37.67	29.32	R	8	R					3.0	R				
280	15	10	2009	6	43	31.9	37.29	28.23	R	5	R					2.5	R				

**TÜRKİYE DEPREM ETKİNLİĞİ ( 2009 YILI EKİM AYI )**

No	Tarih - Date			Zaman - Time			Koordinat - Coordinate			Derinlik - Depth		Magnitüd - Magnitude									
	Gün	Ay	Yıl	Saat	Dak.	San.	Enlem-K	Boylam-D	Ref	Km.	Ref	Ms	Ref	Mb	Ref	Md	Ref	MI	Ref	Mw	Ref
281	15	10	2009	7	16	56.9	40.50	42.09	R	2	R					3.1	R				
282	15	10	2009	8	49	3.5	37.24	28.18	R	6	R					2.6	R				
283	15	10	2009	9	15	1.5	38.97	33.96	R	9	R					2.9	R				
284	15	10	2009	9	18	12.3	37.25	28.26	R	18	R					2.6	R				
285	15	10	2009	10	29	41.3	38.89	26.67	R	19	R					3.2	R				
286	15	10	2009	10	41	40.7	35.95	30.34	R	16	R					3.4	R				
287	15	10	2009	11	49	2.7	38.08	29.98	R	9	R					2.9	R				
288	15	10	2009	12	14	1.9	37.25	28.17	R	5	R					2.5	R				
289	15	10	2009	12	17	33.5	36.10	27.35	R	10	R					2.7	R				
290	15	10	2009	12	31	6.6	39.46	40.31	R	20	R					2.8	R				
291	15	10	2009	12	50	59.0	38.22	38.65	R	13	R					2.5	R				
292	15	10	2009	13	15	32.6	40.74	35.15	R	5	R					2.5	R				
293	15	10	2009	14	53	42.6	36.77	34.38	R	5	R					2.5	R				
294	15	10	2009	15	0	19.9	36.86	31.08	R	27	R					3.0	R				
295	15	10	2009	21	16	2.6	36.94	27.56	R	5	R					2.3	R				
296	16	10	2009	0	34	5.1	39.57	35.96	R	2	R					3.2	R				
297	16	10	2009	0	50	0.4	36.55	41.09	R	5	R					3.9	R				
298	16	10	2009	2	1	17.5	36.96	28.24	R	14	R					2.7	R				
299	16	10	2009	2	4	14.4	37.45	29.94	R	5	R					2.3	R				
300	16	10	2009	6	5	34.8	38.51	31.88	R	5	R					3.5	R				

**TÜRKİYE DEPREM ETKİNLİĞİ ( 2009 YILI EKİM AYI )**

No	Tarih - Date			Zaman - Time			Koordinat - Coordinate			Derinlik - Depth		Magnitüd - Magnitude										
	Gün	Ay	Yıl	Saat	Dak.	San.	Enlem-K	Boylam-D	Ref	Km.	Ref	Ms	Ref	Mb	Ref	Md	Ref	MI	Ref	Mw	Ref	
301	16	10	2009	7	20	19.1	37.26	28.18	R	5	R					2.6	R					
302	16	10	2009	7	32	4.9	38.52	31.89	R	10	R					2.6	R					
303	16	10	2009	7	42	29.4	38.50	31.84	R	5	R					3.0	R					
304	16	10	2009	7	43	51.7	39.29	25.81	R	17	R							3.3	R			
305	16	10	2009	7	45	5.3	39.31	26.11	R	5	R							3.0	R			
306	16	10	2009	7	59	26.4	38.52	31.89	R	13	R					2.5	R					
307	16	10	2009	8	7	1.5	39.53	25.61	R	14	R					3.2	R					
308	16	10	2009	9	1	43.9	39.11	29.02	R	6	R					2.6	R					
309	16	10	2009	9	23	7.9	39.11	32.79	R	3	R					3.6	R					
310	16	10	2009	9	34	4.3	38.29	38.12	R	14	R					2.6	R					
311	16	10	2009	9	34	10.2	37.57	35.73	R	21	R					2.3	R					
312	16	10	2009	9	37	14.1	39.13	32.78	R	17	R					2.9	R					
313	16	10	2009	9	41	2.2	39.04	32.90	R	2	R					2.7	R					
314	16	10	2009	9	44	58.7	39.14	27.60	R	7	R					2.7	R					
315	16	10	2009	9	46	7.1	39.09	32.80	R	5	R					2.9	R					
316	16	10	2009	10	19	43.6	38.68	31.90	R	7	R					2.7	R					
317	16	10	2009	10	19	59.8	39.11	32.82	R	4	R					2.5	R					
318	16	10	2009	10	31	0.2	37.12	30.57	R	3	R					2.3	R					
319	16	10	2009	10	31	10.1	40.02	33.53	R	5	R					2.6	R					
320	16	10	2009	10	31	51.4	40.01	33.54	R	5	R					2.4	R					

**TÜRKİYE DEPREM ETKİNLİĞİ ( 2009 YILI EKİM AYI )**

No	Tarih - Date			Zaman - Time			Koordinat - Coordinate			Derinlik - Depth		Magnitüd - Magnitude									
	Gün	Ay	Yıl	Saat	Dak.	San.	Enlem-K	Boylam-D	Ref	Km.	Ref	Ms	Ref	Mb	Ref	Md	Ref	MI	Ref	Mw	Ref
321	16	10	2009	11	11	24.1	39.26	27.80	R	13	R					2.5	R				
322	16	10	2009	12	31	0.4	37.06	28.30	R	6	R					2.1	R				
323	16	10	2009	12	34	55.7	37.27	28.21	R	8	R					2.5	R				
324	16	10	2009	12	48	10.5	37.75	29.26	R	9	R					2.8	R				
325	16	10	2009	14	17	26.2	39.20	29.16	R	24	R					2.5	R				
326	16	10	2009	15	3	56.7	37.10	38.88	R	3	R					2.8	R				
327	16	10	2009	15	41	14.6	40.72	28.58	R	6	R					2.6	R				
328	16	10	2009	16	12	32.0	39.74	38.74	R	9	R					2.7	R				
329	16	10	2009	17	13	18.2	36.04	29.03	R	14	R					3.1	R				
330	16	10	2009	21	24	45.0	38.51	31.82	R	11	R					2.7	R				
331	16	10	2009	21	51	20.3	37.61	35.96	R	11	R					2.7	R				
332	16	10	2009	22	10	20.9	39.51	32.68	R	5	R					3.1	R				
333	16	10	2009	23	49	19.7	37.77	29.24	R	2	R					3.0	R				
334	17	10	2009	0	0	23.8	39.09	32.85	R	5	R					3.0	R				
335	17	10	2009	0	51	36.7	41.02	43.91	R	8	R					3.4	R				
336	17	10	2009	3	24	3.8	37.17	37.41	R	5	R					2.6	R				
337	17	10	2009	3	36	24.4	39.58	30.48	R	3	R					3.1	R				
338	17	10	2009	3	48	3.1	38.52	31.85	R	5	R					3.2	R				
339	17	10	2009	4	18	47.3	39.57	30.47	R	5	R					2.9	R				
340	17	10	2009	5	4	10.2	39.53	40.70	R	10	R					2.6	R				

**TÜRKİYE DEPREM ETKİNLİĞİ ( 2009 YILI EKİM AYI )**

No	Tarih - Date			Zaman - Time			Koordinat - Coordinate			Derinlik - Depth		Magnitüd - Magnitude									
	Gün	Ay	Yıl	Saat	Dak.	San.	Enlem-K	Boylam-D	Ref	Km.	Ref	Ms	Ref	Mb	Ref	Md	Ref	MI	Ref	Mw	Ref
341	17	10	2009	5	25	30.1	36.85	27.71	R	28	R					2.3	R				
342	17	10	2009	6	31	48.1	40.60	28.03	R	8	R					2.8	R				
343	17	10	2009	6	32	58.7	37.25	28.18	R	3	R					2.3	R				
344	17	10	2009	8	15	43.3	39.10	27.57	R	10	R					2.8	R				
345	17	10	2009	8	55	22.2	37.25	28.19	R	7	R					2.7	R				
346	17	10	2009	10	18	42.8	39.09	27.54	R	14	R					2.8	R				
347	17	10	2009	10	47	44.8	40.16	30.01	R	10	R					2.5	R				
348	17	10	2009	10	53	42.7	37.27	28.22	R	10	R					2.6	R				
349	17	10	2009	11	22	54.5	40.01	35.47	R	4	R					2.8	R				
350	17	10	2009	12	13	37.6	39.94	27.32	R	8	R					2.6	R				
351	17	10	2009	13	15	55.2	38.01	31.34	R	5	R					2.8	R				
352	17	10	2009	13	47	52.5	40.20	39.28	R	7	R					2.8	R				
353	17	10	2009	13	53	33.1	39.10	27.56	R	5	R					2.8	R				
354	17	10	2009	14	36	26.9	39.97	37.96	R	5	R					3.0	R				
355	17	10	2009	18	11	59.8	34.64	25.75	R	5	R					3.7	R				
356	17	10	2009	19	20	32.4	39.91	40.02	R	5	R					3.0	R				
357	17	10	2009	19	22	43.9	38.82	26.22	R	10	R					3.3	R				
358	18	10	2009	1	40	43.3	38.42	38.87	R	18	R					2.6	R				
359	18	10	2009	7	18	19.7	38.28	26.74	R	8	R					2.7	R				
360	18	10	2009	9	59	32.8	39.10	27.58	R	16	R					2.9	R				

**TÜRKİYE DEPREM ETKİNLİĞİ ( 2009 YILI EKİM AYI )**

No	Tarih - Date			Zaman - Time			Koordinat - Coordinate			Derinlik - Depth		Magnitüd - Magnitude									
	Gün	Ay	Yıl	Saat	Dak.	San.	Enlem-K	Boylam-D	Ref	Km.	Ref	Ms	Ref	Mb	Ref	Md	Ref	MI	Ref	Mw	Ref
361	18	10	2009	10	45	41.2	39.94	40.84	R	6	R					3.2	R				
362	18	10	2009	11	56	10.5	37.28	28.20	R	7	R					2.7	R				
363	18	10	2009	12	15	59.9	39.17	40.20	R	5	R					3.0	R				
364	18	10	2009	13	13	58.3	40.88	27.55	R	13	R					2.6	R				
365	18	10	2009	17	49	38.7	36.87	27.57	R	4	R					2.5	R				
366	18	10	2009	18	28	24.2	39.71	38.75	R	15	R					2.9	R				
367	18	10	2009	18	42	33.6	39.89	40.80	R	5	R					3.2	R				
368	18	10	2009	18	53	41.8	39.99	40.80	R	5	R					3.1	R				
369	18	10	2009	19	1	9.3	37.17	35.76	R	25	R					2.9	R				
370	18	10	2009	19	10	53.4	39.95	40.81	R	4	R					3.3	R				
371	18	10	2009	19	17	3.4	38.91	29.98	R	5	R					3.0	R				
372	18	10	2009	19	18	27.2	40.27	25.52	R	20	R					2.7	R				
373	18	10	2009	19	31	21.1	38.19	27.25	R	5	R					2.8	R				
374	18	10	2009	19	37	58.1	37.55	35.67	R	7	R					3.2	R				
375	18	10	2009	19	40	2.7	37.88	32.55	R	8	R					2.8	R				
376	18	10	2009	21	28	46.6	37.95	32.51	R	10	R					2.5	R				
377	18	10	2009	21	37	24.5	38.53	26.88	R	5	R					2.8	R				
378	19	10	2009	0	47	59.9	37.89	29.03	R	5	R					2.6	R				
379	19	10	2009	0	52	1.1	38.48	32.72	R	5	R					2.7	R				
380	19	10	2009	0	54	36.2	40.23	43.50	R	5	R					3.4	R				

**TÜRKİYE DEPREM ETKİNLİĞİ ( 2009 YILI EKİM AYI )**

No	Tarih - Date			Zaman - Time			Koordinat - Coordinate			Derinlik - Depth		Magnitüd - Magnitude									
	Gün	Ay	Yıl	Saat	Dak.	San.	Enlem-K	Boylam-D	Ref	Km.	Ref	Ms	Ref	Mb	Ref	Md	Ref	MI	Ref	Mw	Ref
381	19	10	2009	1	13	14.3	36.96	28.24	R	24	R					2.6	R				
382	19	10	2009	1	50	33.2	38.59	41.37	R	12	R					3.2	R				
383	19	10	2009	2	46	29.2	40.31	25.62	R	10	R					3.2	R				
384	19	10	2009	2	46	59.4	40.07	38.75	R	5	R					3.5	R				
385	19	10	2009	2	51	34.1	40.06	38.78	R	14	R					2.9	R				
386	19	10	2009	3	42	6.6	40.06	38.79	R	14	R					2.9	R				
387	19	10	2009	7	23	24.6	37.54	35.65	R	13	R					2.4	R				
388	19	10	2009	10	2	36.9	39.49	29.69	R	4	R					2.8	R				
389	19	10	2009	12	57	40.3	37.24	28.17	R	2	R					2.8	R				
390	19	10	2009	18	38	40.0	40.57	27.88	R	5	R					2.6	R				
391	19	10	2009	21	6	39.0	37.90	32.59	R	6	R					2.4	R				
392	19	10	2009	21	17	32.0	39.60	27.81	R	10	R					3.4	R				
393	19	10	2009	23	3	6.8	39.36	27.96	R	4	R					3.1	R				
394	19	10	2009	23	49	54.4	36.96	28.26	R	16	R					2.4	R				
395	20	10	2009	0	47	5.9	36.89	27.76	R	5	R					2.4	R				
396	20	10	2009	0	52	12.2	38.51	31.87	R	8	R					2.7	R				
397	20	10	2009	1	16	53.5	39.67	43.06	R	6	R					2.7	R				
398	20	10	2009	2	0	31.3	36.97	28.22	R	15	R					2.6	R				
399	20	10	2009	2	6	57.6	36.97	28.20	R	17	R					2.3	R				
400	20	10	2009	2	7	56.8	36.94	28.20	R	7	R					2.4	R				

**TÜRKİYE DEPREM ETKİNLİĞİ ( 2009 YILI EKİM AYI )**

No	Tarih - Date			Zaman - Time			Koordinat - Coordinate			Derinlik - Depth		Magnitüd - Magnitude									
	Gün	Ay	Yıl	Saat	Dak.	San.	Enlem-K	Boylam-D	Ref	Km.	Ref	Ms	Ref	Mb	Ref	Md	Ref	MI	Ref	Mw	Ref
401	20	10	2009	3	55	1.8	36.96	28.23	R	14	R					2.4	R				
402	20	10	2009	4	8	1.2	38.36	39.22	R	12	R					3.3	R				
403	20	10	2009	6	2	8.9	35.70	27.13	R	9	R					3.4	R				
404	20	10	2009	7	41	8.6	37.25	28.19	R	7	R					2.5	R				
405	20	10	2009	8	3	8.7	36.97	27.90	R	9	R					3.1	R				
406	20	10	2009	8	24	20.5	37.69	38.84	R	7	R					3.0	R				
407	20	10	2009	9	6	1.4	35.59	34.31	R	5	R					2.5	R				
408	20	10	2009	9	8	20.0	38.40	27.34	R	5	R					2.5	R				
409	20	10	2009	11	5	36.0	36.90	30.73	R	5	R					2.5	R				
410	20	10	2009	12	44	28.0	37.43	34.22	R	19	R					2.7	R				
411	20	10	2009	12	54	16.8	37.58	38.18	R	15	R					2.7	R				
412	20	10	2009	20	11	37.0	36.70	42.45	R	5	R					3.4	R				
413	20	10	2009	21	1	31.6	34.75	33.48	R	31	R					3.0	R				
414	21	10	2009	0	18	8.2	40.42	34.88	R	5	R					3.8	R				
415	21	10	2009	5	4	57.1	39.72	38.75	R	7	R					3.0	R				
416	21	10	2009	6	57	26.4	35.76	31.19	R	70	R					3.7	R				
417	21	10	2009	7	21	1.0	39.53	34.58	R	5	R					2.7	R				
418	21	10	2009	9	1	52.4	38.71	38.14	R	7	R					2.9	R				
419	21	10	2009	9	22	50.5	37.28	35.48	R	22	R					2.8	R				
420	21	10	2009	11	6	47.2	37.59	35.59	R	6	R					2.4	R				



**TÜRKİYE DEPREM ETKİNLİĞİ ( 2009 YILI EKİM AYI )**

No	Tarih - Date			Zaman - Time			Koordinat - Coordinate			Derinlik - Depth		Magnitüd - Magnitude										
	Gün	Ay	Yıl	Saat	Dak.	San.	Enlem-K	Boylam-D	Ref	Km.	Ref	Ms	Ref	Mb	Ref	Md	Ref	MI	Ref	Mw	Ref	
421	21	10	2009	13	45	54.7	38.87	27.85	R	3	R					2.5	R					
422	21	10	2009	14	7	17.4	37.61	36.50	R	10	R					3.0	R					
423	21	10	2009	14	55	23.2	36.04	27.20	R	15	R					3.4	R					
424	21	10	2009	15	9	52.9	40.99	33.25	R	5	R					3.3	R					
425	21	10	2009	15	26	1.0	38.92	25.92	R	10	R							3.6	R			
426	21	10	2009	19	25	53.7	36.96	28.22	R	8	R					3.2	R					
427	21	10	2009	19	28	15.7	40.60	30.59	R	20	R					2.5	R					
428	21	10	2009	22	16	19.6	40.86	28.80	R	14	R					3.2	R					
429	21	10	2009	23	25	7.0	37.42	42.68	R	5	R					3.1	R					
430	22	10	2009	5	24	34.4	40.83	27.74	R	2	R					2.8	R					
431	22	10	2009	9	16	35.8	38.51	27.50	R	8	R					2.7	R					
432	22	10	2009	11	0	8.4	36.94	28.23	R	5	R					3.3	R					
433	22	10	2009	12	34	42.8	36.98	28.23	R	11	R					2.7	R					
434	22	10	2009	12	44	48.1	36.95	27.92	R	3	R					2.8	R					
435	22	10	2009	13	1	34.4	39.31	36.61	R	5	R					3.0	R					
436	22	10	2009	17	34	49.0	39.01	43.76	R	8	R					2.5	R					
437	22	10	2009	17	44	38.2	36.99	28.22	R	17	R					2.4	R					
438	22	10	2009	22	39	59.1	41.81	43.06	R	5	R					3.3	R					
439	22	10	2009	23	54	12.7	39.94	27.39	R	8	R					2.5	R					
440	23	10	2009	1	7	24.9	39.10	29.03	R	4	R							3.7	R			

**TÜRKİYE DEPREM ETKİNLİĞİ ( 2009 YILI EKİM AYI )**

No	Tarih - Date			Zaman - Time			Koordinat - Coordinate			Derinlik - Depth		Magnitüd - Magnitude										
	Gün	Ay	Yıl	Saat	Dak.	San.	Enlem-K	Boylam-D	Ref	Km.	Ref	Ms	Ref	Mb	Ref	Md	Ref	MI	Ref	Mw	Ref	
441	23	10	2009	5	15	4.2	35.02	24.28	N	35	N			<b>4.1</b>	N							
442	23	10	2009	5	27	43.1	40.51	33.48	R	10	R					<b>3.2</b>	R					
443	23	10	2009	5	54	40.9	36.70	27.60	R	19	R					<b>2.5</b>	R					
444	23	10	2009	6	33	1.3	39.12	29.03	R	5	R					<b>2.9</b>	R					
445	23	10	2009	7	38	38.7	37.25	28.19	R	2	R					<b>2.5</b>	R					
446	23	10	2009	7	57	24.7	40.48	33.50	R	6	R					<b>2.8</b>	R					
447	23	10	2009	8	41	32.0	39.15	27.69	R	8	R					<b>2.8</b>	R					
448	23	10	2009	8	48	22.3	37.15	28.34	R	24	R					<b>2.3</b>	R					
449	23	10	2009	8	50	17.9	36.95	27.93	R	5	R					<b>1.9</b>	R					
450	23	10	2009	9	2	38.9	37.23	28.15	R	5	R					<b>2.6</b>	R					
451	23	10	2009	9	13	39.6	37.45	28.19	R	22	R					<b>2.3</b>	R					
452	23	10	2009	9	34	11.0	36.00	27.56	R	24	R					<b>2.7</b>	R					
453	23	10	2009	10	18	5.4	39.27	27.72	R	9	R					<b>2.7</b>	R					
454	23	10	2009	10	22	42.9	36.73	31.22	R	5	R					<b>2.7</b>	R					
455	23	10	2009	10	43	32.6	37.50	35.44	R	21	R					<b>2.6</b>	R					
456	23	10	2009	10	48	5.2	37.09	30.54	R	6	R					<b>2.6</b>	R					
457	23	10	2009	11	3	25.4	39.06	29.17	R	12	R					<b>2.7</b>	R					
458	23	10	2009	11	3	39.0	37.00	27.82	R	5	R							<b>3.4</b>	R			
459	23	10	2009	11	43	54.4	39.08	27.44	R	7	R					<b>2.7</b>	R					
460	23	10	2009	11	44	20.7	37.04	31.33	R	11	R					<b>2.8</b>	R					

**TÜRKİYE DEPREM ETKİNLİĞİ ( 2009 YILI EKİM AYI )**

No	Tarih - Date			Zaman - Time			Koordinat - Coordinate			Derinlik - Depth		Magnitüd - Magnitude									
	Gün	Ay	Yıl	Saat	Dak.	San.	Enlem-K	Boylam-D	Ref	Km.	Ref	Ms	Ref	Mb	Ref	Md	Ref	MI	Ref	Mw	Ref
461	23	10	2009	12	54	59.9	36.17	29.66	R	5	R					2.9	R				
462	23	10	2009	13	16	52.1	39.93	29.79	R	4	R					2.4	R				
463	23	10	2009	13	17	26.5	37.25	28.24	R	19	R					2.2	R				
464	23	10	2009	13	23	59.6	37.38	26.89	R	13	R					2.5	R				
465	23	10	2009	13	50	19.0	41.52	27.94	R	12	R					2.6	R				
466	23	10	2009	14	17	55.6	35.76	28.19	R	20	R							3.4	R		
467	23	10	2009	15	20	22.6	37.77	35.13	R	10	R					2.7	R				
468	23	10	2009	15	23	42.6	37.93	32.07	R	5	R					2.4	R				
469	23	10	2009	15	35	16.8	36.98	27.91	R	5	R					2.2	R				
470	23	10	2009	15	51	5.3	36.97	27.90	R	5	R					2.9	R				
471	23	10	2009	18	5	5.3	38.90	26.61	R	11	R					3.2	R				
472	23	10	2009	18	10	20.4	38.55	32.02	R	9	R					2.7	R				
473	23	10	2009	18	21	21.1	37.11	29.04	R	12	R					3.5	R				
474	23	10	2009	19	20	38.1	37.43	26.68	R	12	R					3.2	R				
475	23	10	2009	21	3	22.7	40.42	28.57	R	5	R					2.7	R				
476	23	10	2009	21	28	7.1	36.99	27.91	R	14	R					2.1	R				
477	23	10	2009	21	30	45.0	37.87	29.13	R	15	R					2.5	R				
478	23	10	2009	21	34	53.0	36.96	27.91	R	5	R					2.2	R				
479	23	10	2009	21	36	6.0	37.89	29.14	R	3	R					2.5	R				
480	23	10	2009	21	41	40.5	37.91	29.17	R	5	R					2.6	R				

**TÜRKİYE DEPREM ETKİNLİĞİ ( 2009 YILI EKİM AYI )**

No	Tarih - Date			Zaman - Time			Koordinat - Coordinate			Derinlik - Depth		Magnitüd - Magnitude										
	Gün	Ay	Yıl	Saat	Dak.	San.	Enlem-K	Boylam-D	Ref	Km.	Ref	Ms	Ref	Mb	Ref	Md	Ref	MI	Ref	Mw	Ref	
481	23	10	2009	23	35	47.3	39.58	39.80	R	6	R					3.2	R					
482	24	10	2009	0	9	31.2	39.48	28.05	R	4	R					3.1	R					
483	24	10	2009	1	35	57.8	37.02	29.17	R	3	R					3.2	R					
484	24	10	2009	2	37	26.2	37.33	26.82	R	5	R					2.9	R					
485	24	10	2009	3	19	52.9	34.96	30.35	R	26	R					4.0	R					
486	24	10	2009	5	16	30.0	39.08	29.03	R	5	R					3.0	R					
487	24	10	2009	6	42	11.3	38.93	31.56	R	3	R					2.8	R					
488	24	10	2009	8	29	51.0	36.95	27.93	R	9	R					2.2	R					
489	24	10	2009	9	16	1.7	39.30	27.62	R	18	R					2.9	R					
490	24	10	2009	9	37	58.0	39.59	27.81	R	6	R					2.9	R					
491	24	10	2009	11	37	36.2	40.54	29.56	R	2	R					2.7	R					
492	24	10	2009	12	4	17.0	39.08	29.13	R	8	R					2.8	R					
493	24	10	2009	12	15	25.6	39.10	29.10	R	6	R					2.9	R					
494	24	10	2009	13	35	12.6	40.55	43.02	R	9	R					3.0	R					
495	24	10	2009	16	7	13.3	36.98	29.17	R	5	R					2.8	R					
496	24	10	2009	16	35	14.7	36.99	27.90	R	8	R					3.3	R					
497	24	10	2009	18	54	56.6	40.69	29.31	R	7	R					2.6	R					
498	24	10	2009	19	31	13.0	40.25	33.95	R	6	R					3.3	R					
499	24	10	2009	20	13	12.9	37.85	31.06	R	5	R					3.1	R					
500	24	10	2009	22	53	47.7	36.95	27.90	R	5	R					2.7	R					

**TÜRKİYE DEPREM ETKİNLİĞİ ( 2009 YILI EKİM AYI )**

No	Tarih - Date			Zaman - Time			Koordinat - Coordinate			Derinlik - Depth		Magnitüd - Magnitude									
	Gün	Ay	Yıl	Saat	Dak.	San.	Enlem-K	Boylam-D	Ref	Km.	Ref	Ms	Ref	Mb	Ref	Md	Ref	MI	Ref	Mw	Ref
501	24	10	2009	23	23	34.0	37.75	36.40	R	6	R					3.1	R				
502	24	10	2009	23	44	12.2	36.93	27.94	R	16	R					2.3	R				
503	24	10	2009	23	54	46.8	37.04	29.16	R	5	R					2.7	R				
504	24	10	2009	23	58	1.8	36.95	27.94	R	5	R					2.2	R				
505	25	10	2009	1	1	23.8	36.97	27.89	R	3	R					2.3	R				
506	25	10	2009	1	13	51.2	36.98	27.91	R	5	R					2.3	R				
507	25	10	2009	4	21	32.9	40.60	29.03	R	5	R					2.9	R				
508	25	10	2009	5	55	37.5	39.92	39.30	R	16	R					2.6	R				
509	25	10	2009	7	11	25.8	37.22	28.17	R	7	R					2.6	R				
510	25	10	2009	8	27	22.1	39.07	29.11	R	5	R					2.8	R				
511	25	10	2009	9	56	9.6	37.24	28.19	R	2	R					2.6	R				
512	25	10	2009	10	18	7.5	39.20	27.46	R	9	R					2.7	R				
513	25	10	2009	10	23	15.4	37.92	32.54	R	15	R					2.6	R				
514	25	10	2009	10	40	36.1	39.16	41.20	R	16	R					2.5	R				
515	25	10	2009	13	7	56.5	36.91	35.87	R	9	R					2.8	R				
516	25	10	2009	13	42	33.3	36.94	27.59	R	5	R					2.7	R				
517	25	10	2009	15	59	19.3	39.41	27.91	R	9	R					2.7	R				
518	25	10	2009	16	17	2.8	36.06	28.33	R	5	R					2.8	R				
519	25	10	2009	18	36	57.6	40.82	34.91	R	6	R					2.9	R				
520	25	10	2009	19	25	45.4	37.00	27.90	R	9	R					2.7	R				

**TÜRKİYE DEPREM ETKİNLİĞİ ( 2009 YILI EKİM AYI )**

No	Tarih - Date			Zaman - Time			Koordinat - Coordinate			Derinlik - Depth		Magnitüd - Magnitude									
	Gün	Ay	Yıl	Saat	Dak.	San.	Enlem-K	Boylam-D	Ref	Km.	Ref	Ms	Ref	Mb	Ref	Md	Ref	MI	Ref	Mw	Ref
521	25	10	2009	19	41	55.2	38.17	28.85	R	3	R					<b>3.2</b>	R				
522	26	10	2009	2	14	32.6	37.02	27.88	R	10	R					<b>2.9</b>	R				
523	26	10	2009	3	39	1.8	37.46	35.69	R	7	R					<b>2.9</b>	R				
524	26	10	2009	6	27	1.8	39.13	29.04	R	5	R					<b>2.9</b>	R				
525	26	10	2009	7	4	50.5	38.18	28.87	R	7	R					<b>2.6</b>	R				
526	26	10	2009	10	25	6.3	39.11	40.40	R	10	R					<b>2.5</b>	R				
527	26	10	2009	10	41	57.0	37.06	28.59	R	18	R					<b>2.3</b>	R				
528	26	10	2009	11	6	16.9	39.30	27.70	R	13	R					<b>2.7</b>	R				
529	26	10	2009	11	6	54.1	36.65	31.04	R	21	R					<b>2.9</b>	R				
530	26	10	2009	11	52	56.2	35.59	32.00	R	19	R							<b>3.3</b>	R		
531	26	10	2009	12	38	42.2	37.39	26.69	R	5	R					<b>3.2</b>	R				
532	26	10	2009	13	4	12.1	37.47	26.71	R	8	R					<b>2.8</b>	R				
533	26	10	2009	13	36	11.0	41.35	35.85	R	6	R					<b>2.9</b>	R				
534	26	10	2009	13	45	34.0	39.95	29.91	R	6	R					<b>2.3</b>	R				
535	26	10	2009	13	49	33.8	41.00	36.06	R	5	R					<b>2.6</b>	R				
536	26	10	2009	14	20	24.7	37.23	38.92	R	5	R					<b>2.7</b>	R				
537	26	10	2009	14	33	16.1	38.76	31.31	R	8	R					<b>2.7</b>	R				
538	26	10	2009	15	2	13.3	37.22	28.21	R	7	R					<b>2.6</b>	R				
539	26	10	2009	15	27	50.8	39.17	40.39	R	5	R							<b>2.9</b>	R		
540	26	10	2009	17	45	25.9	37.92	32.58	R	12	R					<b>2.9</b>	R				

**TÜRKİYE DEPREM ETKİNLİĞİ ( 2009 YILI EKİM AYI )**

No	Tarih - Date			Zaman - Time			Koordinat - Coordinate			Derinlik - Depth		Magnitüd - Magnitude									
	Gün	Ay	Yıl	Saat	Dak.	San.	Enlem-K	Boylam-D	Ref	Km.	Ref	Ms	Ref	Mb	Ref	Md	Ref	MI	Ref	Mw	Ref
541	26	10	2009	21	31	54.9	39.10	29.06	R	5	R					<b>3.0</b>	R				
542	26	10	2009	22	34	47.8	34.59	33.02	R	3	R					<b>3.4</b>	R				
543	26	10	2009	22	37	13.9	34.63	32.92	R	7	R					<b>3.3</b>	R				
544	26	10	2009	22	49	20.8	34.70	33.09	R	19	R					<b>3.0</b>	R				
545	27	10	2009	1	28	33.5	38.53	40.70	R	5	R					<b>2.8</b>	R				
546	27	10	2009	2	37	13.0	37.32	34.39	R	9	R					<b>2.9</b>	R				
547	27	10	2009	2	38	9.3	37.99	32.30	R	6	R					<b>3.1</b>	R				
548	27	10	2009	5	17	4.4	34.71	33.04	R	8	R					<b>3.2</b>	R				
549	27	10	2009	5	29	55.0	39.36	37.96	R	7	R					<b>2.9</b>	R				
550	27	10	2009	7	58	53.0	37.92	32.57	R	3	R					<b>2.9</b>	R				
551	27	10	2009	8	7	37.4	40.82	27.93	R	6	R					<b>2.5</b>	R				
552	27	10	2009	8	26	46.1	40.86	27.95	R	10	R					<b>2.8</b>	R				
553	27	10	2009	8	31	37.7	37.94	32.51	R	6	R					<b>3.0</b>	R				
554	27	10	2009	10	19	3.0	39.90	30.04	R	8	R					<b>2.7</b>	R				
555	27	10	2009	10	24	46.2	40.60	29.27	R	5	R					<b>2.7</b>	R				
556	27	10	2009	12	16	51.7	37.27	28.15	R	13	R					<b>2.6</b>	R				
557	27	10	2009	12	52	13.6	40.31	36.11	R	8	R					<b>2.9</b>	R				
558	27	10	2009	13	25	3.4	39.14	41.04	R	9	R					<b>2.9</b>	R				
559	27	10	2009	20	54	47.8	36.26	35.52	R	9	R							<b>3.8</b>	R		
560	27	10	2009	21	51	30.9	40.43	27.52	R	13	R					<b>2.7</b>	R				

**TÜRKİYE DEPREM ETKİNLİĞİ ( 2009 YILI EKİM AYI )**

No	Tarih - Date			Zaman - Time			Koordinat - Coordinate			Derinlik - Depth		Magnitüd - Magnitude									
	Gün	Ay	Yıl	Saat	Dak.	San.	Enlem-K	Boylam-D	Ref	Km.	Ref	Ms	Ref	Mb	Ref	Md	Ref	MI	Ref	Mw	Ref
561	27	10	2009	22	12	16.0	36.84	26.55	R	7	R					2.8	R				
562	27	10	2009	22	59	26.1	39.08	29.02	R	5	R					3.1	R				
563	28	10	2009	0	37	58.4	37.56	27.03	R	8	R					2.9	R				
564	28	10	2009	2	10	40.1	39.06	26.35	R	5	R					2.8	R				
565	28	10	2009	4	27	0.2	38.18	38.52	R	7	R							3.5	R		
566	28	10	2009	7	12	47.8	35.81	31.52	R	28	R					3.3	R				
567	28	10	2009	10	21	59.4	42.02	26.34	R	5	R					3.3	R				
568	28	10	2009	10	40	44.2	42.03	26.32	R	6	R					3.3	R				
569	28	10	2009	11	0	59.4	42.06	26.20	R	9	R					2.9	R				
570	28	10	2009	11	35	25.9	38.32	38.83	R	14	R					2.8	R				
571	28	10	2009	22	31	57.8	40.50	42.35	R	5	R					3.0	R				
572	28	10	2009	22	46	55.5	36.39	28.72	R	20	R					2.6	R				
573	28	10	2009	22	49	20.4	37.99	27.25	R	7	R					2.8	R				
574	28	10	2009	23	18	34.8	39.90	42.77	R	13	R					2.7	R				
575	29	10	2009	4	36	33.3	39.05	40.44	R	5	R							3.3	R		
576	29	10	2009	13	38	59.6	40.70	30.66	R	13	R					2.4	R				
577	29	10	2009	14	7	10.9	40.03	42.29	R	5	R					2.8	R				
578	29	10	2009	14	31	12.0	39.58	33.20	R	13	R					2.8	R				
579	29	10	2009	16	30	53.1	39.09	32.86	R	8	R					3.3	R				
580	29	10	2009	21	4	4.8	34.72	33.04	R	18	R							3.4	R		



**TÜRKİYE DEPREM ETKİNLİĞİ ( 2009 YILI EKİM AYI )**

No	Tarih - Date			Zaman - Time			Koordinat - Coordinate			Derinlik - Depth		Magnitüd - Magnitude									
	Gün	Ay	Yıl	Saat	Dak.	San.	Enlem-K	Boylam-D	Ref	Km.	Ref	Ms	Ref	Mb	Ref	Md	Ref	MI	Ref	Mw	Ref
581	30	10	2009	3	52	25.5	39.83	39.09	R	7	R					2.8	R				
582	30	10	2009	5	15	24.0	38.24	26.63	R	12	R					2.8	R				
583	30	10	2009	7	2	4.9	39.10	29.02	R	5	R					2.8	R				
584	30	10	2009	7	6	47.8	37.30	28.23	R	5	R					2.4	R				
585	30	10	2009	7	13	27.5	36.59	27.08	R	124	R							2.8	R		
586	30	10	2009	7	23	12.6	39.87	39.08	R	18	R					2.6	R				
587	30	10	2009	8	48	27.4	38.28	34.91	R	5	R					3.0	R				
588	30	10	2009	9	45	39.2	38.94	40.46	R	22	R					2.6	R				
589	30	10	2009	9	58	1.5	36.28	29.17	R	8	R					2.8	R				
590	30	10	2009	10	56	40.1	37.41	34.22	R	8	R					2.9	R				
591	30	10	2009	11	50	10.3	39.63	29.97	R	11	R					2.5	R				
592	30	10	2009	13	1	28.2	38.66	38.82	R	17	R					2.3	R				
593	30	10	2009	13	3	15.7	37.52	35.43	R	9	R					2.7	R				
594	30	10	2009	13	29	27.4	39.42	39.12	R	18	R					2.7	R				
595	30	10	2009	13	43	17.3	37.58	34.95	R	5	R					2.1	R				
596	30	10	2009	17	49	45.5	38.26	27.19	R	9	R					2.4	R				
597	30	10	2009	17	57	4.3	38.20	27.15	R	8	R					3.2	R				
598	30	10	2009	17	58	53.6	38.02	42.64	R	3	R					3.2	R				
599	30	10	2009	18	37	26.1	38.25	27.22	R	14	R					2.8	R				
600	30	10	2009	20	44	23.9	37.44	31.03	R	100	R					3.0	R				

**TÜRKİYE DEPREM ETKİNLİĞİ ( 2009 YILI EKİM AYI )**

No	Tarih - Date			Zaman - Time			Koordinat - Coordinate			Derinlik - Depth		Magnitüd - Magnitude									
	Gün	Ay	Yıl	Saat	Dak.	San.	Enlem-K	Boylam-D	Ref	Km.	Ref	Ms	Ref	Mb	Ref	Md	Ref	MI	Ref	Mw	Ref
601	30	10	2009	20	49	33.2	39.42	39.12	R	16	R					2.7	R				
602	30	10	2009	21	2	27.5	35.48	27.35	R	5	R					3.4	R				
603	30	10	2009	21	38	32.8	37.93	32.55	R	4	R					3.3	R				
604	30	10	2009	22	36	58.8	40.59	35.77	R	15	R					2.6	R				
605	30	10	2009	23	50	25.1	39.42	39.10	R	4	R					2.5	R				
606	31	10	2009	0	14	14.9	37.09	30.79	R	70	R					2.5	R				
607	31	10	2009	1	57	3.4	37.91	32.51	R	14	R					2.9	R				
608	31	10	2009	2	16	54.3	38.99	40.32	R	2	R					2.5	R				
609	31	10	2009	2	46	5.2	39.07	40.31	R	10	R					2.8	R				
610	31	10	2009	2	47	34.2	39.10	40.32	R	6	R					2.6	R				
611	31	10	2009	2	49	49.3	39.10	40.33	R	2	R					2.8	R				
612	31	10	2009	2	53	14.2	39.06	40.34	R	9	R					2.9	R				
613	31	10	2009	3	21	21.7	39.60	27.85	R	6	R					3.0	R				
614	31	10	2009	4	1	20.2	39.41	39.13	R	12	R					2.6	R				
615	31	10	2009	4	32	6.0	40.52	30.29	R	6	R					2.5	R				
616	31	10	2009	6	22	30.9	37.69	29.21	R	9	R					2.8	R				
617	31	10	2009	7	10	38.5	38.72	25.91	R	5	R					3.3	R				
618	31	10	2009	18	40	37.5	39.11	28.59	R	6	R					2.7	R				
619	31	10	2009	19	51	2.1	38.17	37.33	R	7	R					2.6	R				
620	31	10	2009	20	52	36.0	39.81	41.72	R	18	R					2.9	R				

**TÜRKİYE DEPREM ETKİNLİĞİ ( 2009 YILI EKİM AYI )**

No	Tarih - Date			Zaman - Time			Koordinat - Coordinate			Derinlik - Depth		Magnitüd - Magnitude									
	Gün	Ay	Yıl	Saat	Dak.	San.	Enlem-K	Boylam-D	Ref	Km.	Ref	Ms	Ref	Mb	Ref	Md	Ref	MI	Ref	Mw	Ref
621	31	10	2009	20	52	54.4	36.15	35.78	R	19	R					<b>3.3</b>	R				
622	31	10	2009	21	50	12.7	37.52	35.68	R	5	R					<b>2.7</b>	R				
623	31	10	2009	23	31	55.1	40.35	25.50	R	6	R					<b>3.2</b>	R				