



*Kandilli Rasathanesi Ve Deprem Araştırma Enstitüsü*

*ULUSAL DEPREM İZLEME MERKEZİ*



*2009 AĞUSTOS AYI  
BÜLTENİ*

*YIL: 6 - SAYI: 68  
İSTANBUL*

## **Hazırlayan ve Katkıda Bulunanlar**

*D. Kalafat*

*K. Kekovalı*

*K. Kılıç*

*Y. Güneş*

*M. Yilmazer*

*Z. Öğütcü*

*M. Kara*

*M. Suvarıklı*

*A. Küsmezer*

*F. Kılıçer Bekler*

*P. Deniz*

*A. Berberoğlu*

*M. Çomoğlu*

*M. Berberoğlu*

*H. Gümüş*

*S. Altuncu*

*D.Kepekçi*

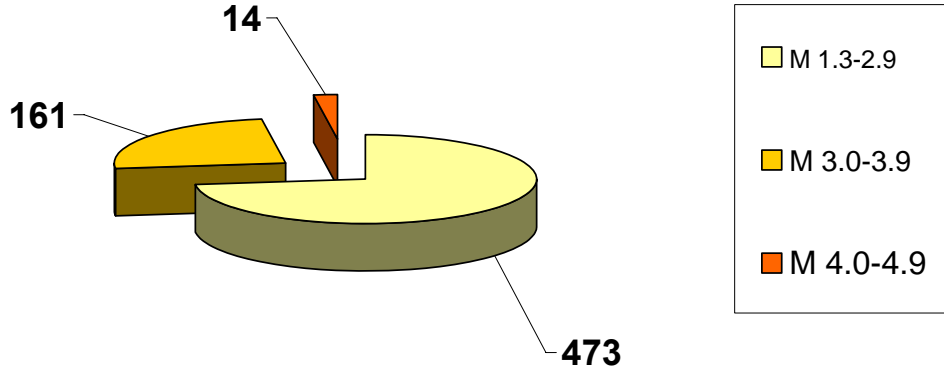
*R.Polat*

*Ö.Çok*

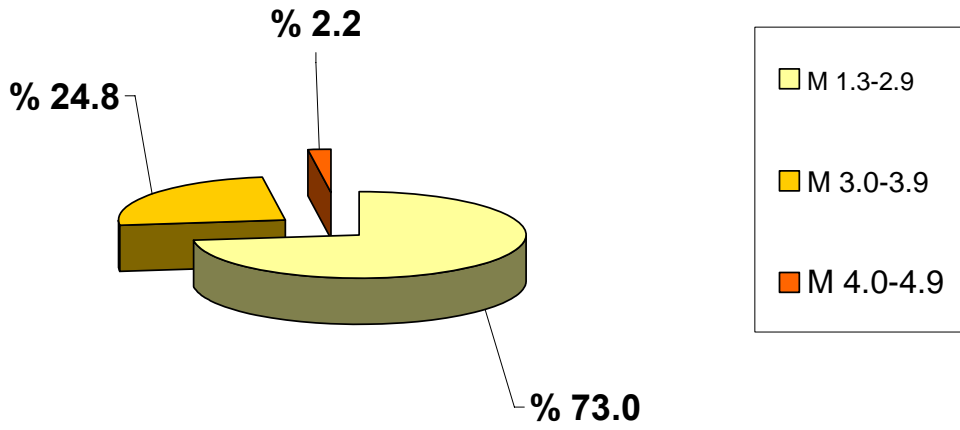
2009 yılı Ağustos ayında meydana gelen depremlerin  
istatistiksel dağılımı

<b>MAGNİTÜD ARALIĞI</b>	<b>TOPLAM</b>
1.3-2.9	473
3.0-3.9	161
4.0-4.9	14
5.0-5.9	—
6.0-6.9	—
7.0-7.9	—
<b>TOPLAM</b>	<b>648</b>

**2009 AĞUSTOS AYI DEPREMLERİNİN İSTATİSTİKSEL DAĞILIMI**  
(Toplam: 648 Adet )



**2009 AĞUSTOS AYI DEPREMLERİNİN İSTATİSTİKSEL DAĞILIMI**  
(%)



## DEĞERLENDİRME

Ağustos ayında toplam 648 depremin çözümlü yapılmıştır. Büyüklüğü 4.0 ve üzerinde olan deprem sayısı 14 adettir. Toplam meydana gelen depremlerin % 73 oranını büyüklükleri  $M=1.3-2.9$  arasındaki depremler oluşturmaktadır.

Toplam 96 adet geniş bantlı (Broad Band) istasyonun Ağustos ayı içerisindeki çalışma performansları % 80 dir. İstasyon verimliliklerine baktığımızda, Antalya (ANTB), Balçova (BLCB), Çorlu (CRLT), Erikli (ERIK), Gökçeada (GADA), Gaziantep (GAZ), Karataş (KRTS), Trabzon (KTUT), Marmara Adası (MRMT), Tavşanlı (TVSB) ve Varto (VRTB) bu ay içerisindeki verimsiz istasyonlardır.

Toplam 27 adet kısa periyotlu (SP) istasyonun Ağustos ayı içerisindeki çalışma performansları % 85 olup, Akhisar (AKS), Denizli (DENT), Hakkari (HKR) bu ay içindeki verimsiz istasyonlardır.

Ağustos ayı itibarıyla deprem istasyonlarının ve *sismik ağın ortalama verimlilik performansı % 81* olmuştur.

Ağustos ayındaki en önemli deprem, 30.08.2009 saat 14:04 (GMT)'de  $M=4.8$  İran-Irak sınır bölgesinde meydana gelmiştir. Bundan başka; 05.08.2009 saat 07:48  $M=4.7$  Bulgaristan açıkları-Karadeniz, 25.08.2009 saat 06:28 (GMT)  $M=4.6$  Güney Kıbrıs, 26.08.2009 saat 14:26 (GMT)  $M=4.5$  Akdeniz, olan orta büyüklükte deprem aktiviteleri meydana gelmiştir.

Ayrıca, Bandırma-Gönen-Balıkesir, Soma-Kırkağaç-Manisa, Çınarcık-Yalova, Gemlik-Bursa, Tekirdağ Açıkları-Marmara Denizi'nde, Saros Körfezi'nde, Oniki Adalar bölgesinde, Gökova Körfezi-Muğla, Sarayköy-Akköy-Denizli, Afşar-Bala-Ankara, Kırşehir, Simav-Kütahya, Kozan-Adana, Ege Denizi'nin Türkiye kıyıları boyunca meydana gelen deprem etkinlikleri dikkat çekmektedir. Erzincan, Varto-Muş, Şanlıurfa ve Doğu Anadolu Fay Zonu boyunca, Sivrice-Elazığ, Malatya'da deprem etkinlikleri gözlenmiştir.

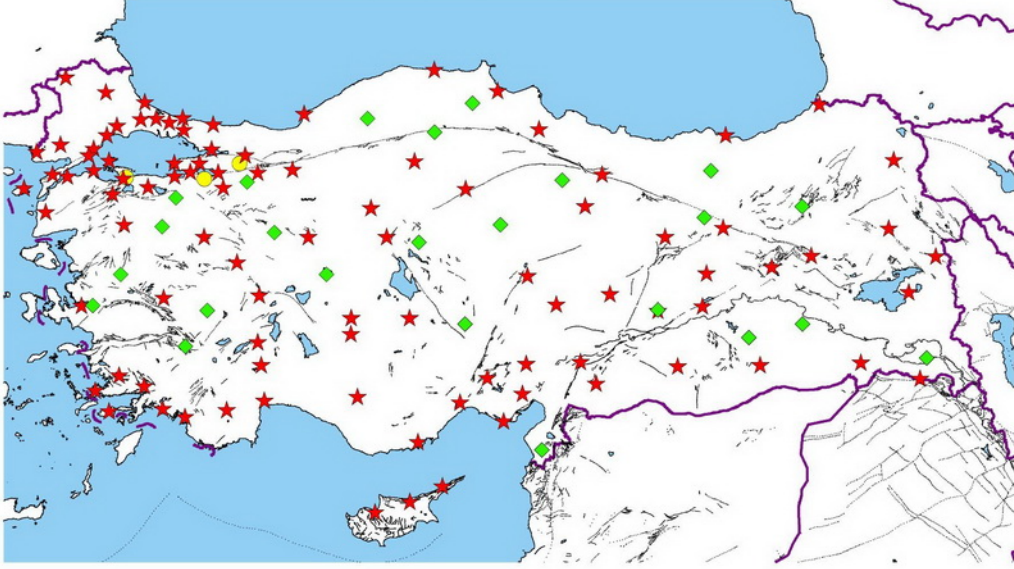
AĞUSTOS 2009

İSTASYON VERİMLİLİK

TABLolarI

B.Ü.  
KANDİLLİ RASATHANESİ VE DEPREM ARAŞTIRMA ENSTİTÜSÜ  
ULUSAL DEPREM İZLEME MERKEZİ  
DEPREM İSTASYONLARI

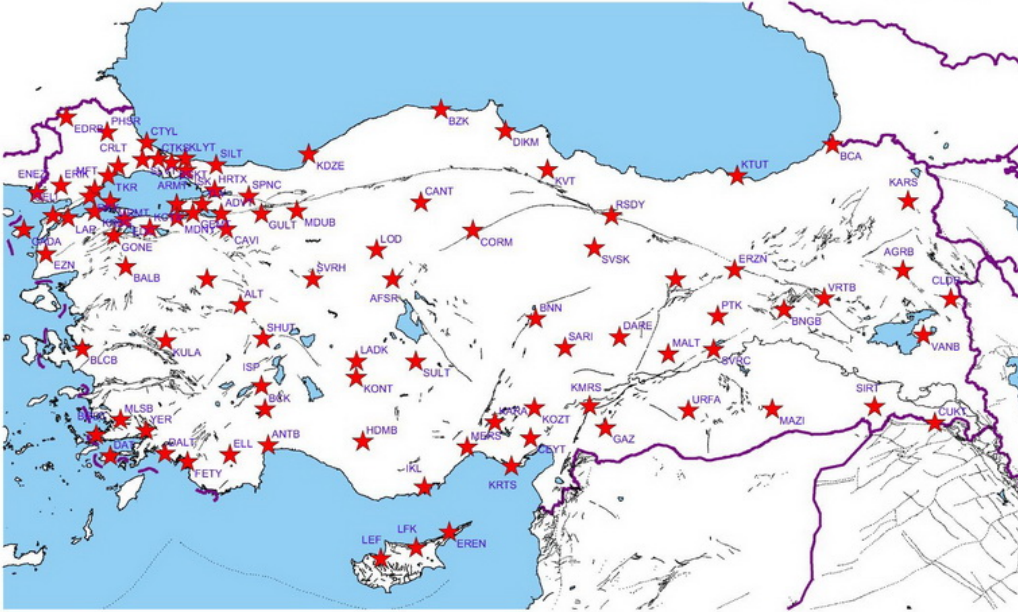
Ağustos 2009  
Toplam: 123 Adet



★ GENİŞ BAND      ◆ KISA PERİYOT      ● TELEMETRİ KISA PERİYOT

**BROAD BAND DEPREM İSTASYONLARI**

Ağustos 2009  
96 Adet



Adet	Yöntem	Kod	(+)adet	(-)adet	TOPLAM GÜN	(+)%	(-)%	( + )%	( - )%
1	1	ADVT	31	0	31	100	0		
2	2	AFSR	29	2	31	94	6		
3	3	AGRB	31	0	31	100	0		
4	4	ALT	11	20	31	35	65		
5	5	ANTB	0	31	31	0	100		
6	6	ARMT	31	0	31	100	0		
7	7	BALB	31	0	31	100	0		
8	8	BCA	29	2	31	94	6		
9	9	BCK	31	0	31	100	0		
10	10	BGKT	31	0	31	100	0		
11	11	BLCB	0	31	31	0	100		
12	12	BNGB	31	0	31	100	0		
13	13	BNN	31	0	31	100	0		
14	14	BODT	31	0	31	100	0		
15	15	BZK	31	0	31	100	0		
16	16	CANT	31	0	31	100	0		
17	17	CAVI	31	0	31	100	0		
18	18	CEYT	31	0	31	100	0		
19	19	CLDR	31	0	31	100	0		
20	20	CORM	31	0	31	100	0		
21	21	CRLT	0	31	31	0	100		
22	22	CTKS	31	0	31	100	0		
23	23	CTYL	29	2	31	94	6		
24	24	CUKT	31	0	31	100	0		
25	25	DALY	31	0	31	100	0		
26	26	DARE	31	0	31	100	0		
27	27	DAT	31	0	31	100	0		
28	28	DIKM	31	0	31	100	0		
29	29	EDC	0	31	31	0	100		
30	30	EDRB	31	0	31	100	0		
31	31	ELL	31	0	31	100	0		
32	32	ENEZ	22	9	31	71	29		
33	33	EREN	23	8	31	74	26		
34	34	ERIK	0	31	31	0	100		
35	35	ERZN	31	0	31	100	0		
36	36	EZN	31	0	31	100	0		
37	37	FETY	31	0	31	100	0		
38	38	GADA	0	31	31	0	100		
39	39	GAZ	0	31	31	0	100		
40	40	GELI	22	9	31	71	29		
41	41	GEMT	9	22	31	29	71		
42	42	GONE	30	1	31	97	3		
43	43	GULT	31	0	31	100	0		
44	44	HDMB	15	16	31	48	52		
45	45	HRTX	31	0	31	100	0		
46	46	IKL	31	0	31	100	0		
47	47	ILIC	31	0	31	100	0		
48	48	ISK	31	0	31	100	0		
49	49	ISP	31	0	31	100	0		
50	50	KARA	31	0	31	100	0		
51	51	KARS	31	0	31	100	0		
52	52	KCTX	31	0	31	100	0		
53	53	KDZE	31	0	31	100	0		
54	54	KLYT	31	0	31	100	0		
55	55	KMRS	31	0	31	100	0		
56	56	KONT	31	0	31	100	0		
57	57	KOZT	31	0	31	100	0		
58	58	KRBG	30	1	31	97	3		
59	59	KRTS	0	31	31	0	100		
60	60	KTUT	0	31	31	0	100		
61	61	KULA	31	0	31	100	0		
62	62	KVT	31	0	31	100	0		
63	63	LADK	31	0	31	100	0		
64	64	LAP	31	0	31	100	0		
65	65	LEF	31	0	31	100	0		
66	66	LFK	31	0	31	100	0		
67	67	LOD	31	0	31	100	0		
68	68	MALT	31	0	31	100	0		
69	69	MAZI	25	6	31	81	19		
70	70	MDUB	31	0	31	100	0		
71	71	MDYN	31	0	31	100	0		
72	72	MERS	7	24	31	23	77		
73	73	MFTX	31	0	31	100	0		
74	74	MLSB	31	0	31	100	0		
75	75	MRMT	0	31	31	0	100		
76	76	PHSR	30	1	31	97	3		
77	77	PTK	31	0	31	100	0		
78	78	RKY	26	5	31	84	16		
79	79	RSDY	31	0	31	100	0		
80	80	SARIZ	13	18	31	42	58		
81	81	SHUT	20	11	31	65	35		
82	82	SILT	31	0	31	100	0		
83	83	SIRT	31	0	31	100	0		
84	84	SPNC	31	0	31	100	0		
85	85	SLVT	31	0	31	100	0		
86	86	SULT	31	0	31	100	0		
87	87	SVRC	9	22	31	29	71		
88	88	SVRH	31	0	31	100	0		
89	89	SVSK	30	1	31	97	3		
90	90	TKR	31	0	31	100	0		
91	91	TVSB	0	31	31	0	100		
92	92	URFA	28	3	31	90	10		
93	93	VANB	3	28	31	10	90		
94	94	VRTB	0	31	31	0	100		
95	95	YER	31	0	31	100	0		
96	96	YLVX	31	0	31	100	0		

GENİŞ BANTLI (BROAD-BAND) İSTASYONLAR

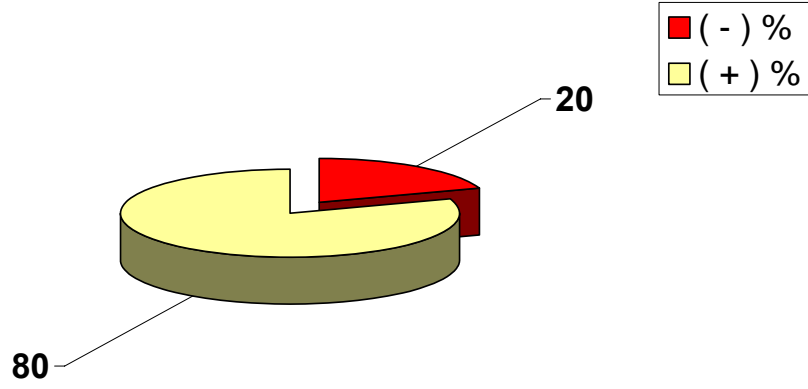
80

20

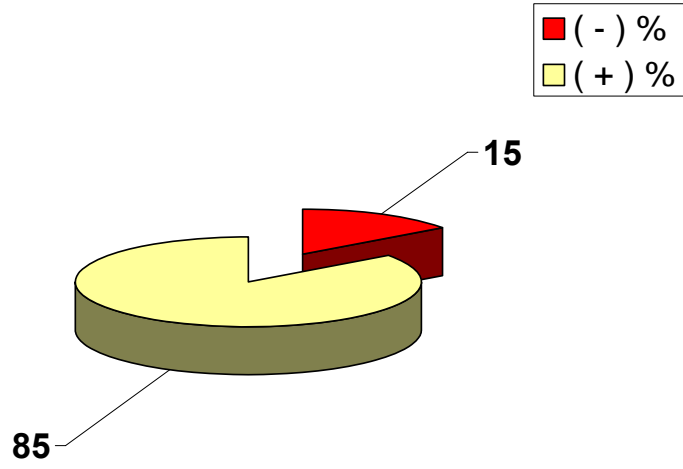


97	1	KISA PERİYOT (SHORT PERIOD) İSTASYONLAR	AKS	5	26	31	16	84	85	15
98	2		BNT	31	0	31	100	0		
99	3		BTMT	23	8	31	74	26		
100	4		BYBT	31	0	31	100	0		
101	5		DENT	5	26	31	16	84		
102	6		DIY	31	0	31	100	0		
103	7		DST	30	1	31	97	3		
104	8		ESKT	31	0	31	100	0		
105	9		EYL	18	13	31	58	42		
106	10		EZC	31	0	31	100	0		
107	11		EZM	31	0	31	100	0		
108	12		GPA	31	0	31	100	0		
109	13		GUMT	24	7	31	77	23		
110	14		HKR	2	29	31	6	94		
111	15		HTY	30	1	31	97	3		
112	16		IZI	31	0	31	100	0		
113	17		IZM	25	6	31	81	19		
114	18		KAMT	23	8	31	74	26		
115	19		KHL	31	0	31	100	0		
116	20		KIZT	31	0	31	100	0		
117	21		MYA	31	0	31	100	0		
118	22		NIG	31	0	31	100	0		
119	23		ORLT	31	0	31	100	0		
120	24		SAFT	31	0	31	100	0		
121	25		TOKT	31	0	31	100	0		
122	26		TOS	31	0	31	100	0		
123	27		YOZ	31	0	31	100	0		
							+	(-)		
2009 AĞUSTOS ORTALAMA %							81	19		

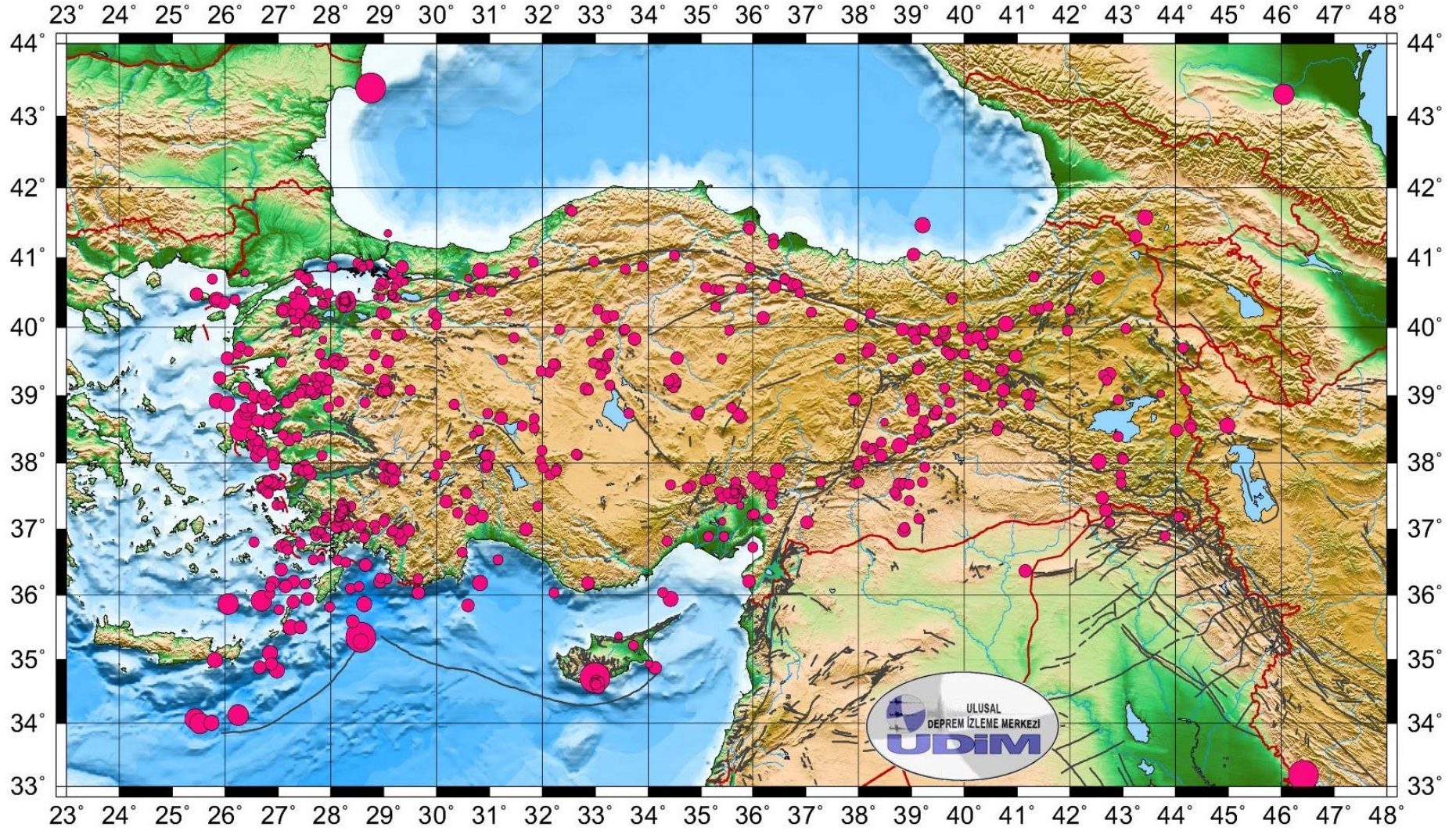
## 2009 AĞUSTOS AYI BROAD-BAND İSTASYONLARI VERİMLİLİK GRAFİĞİ



## 2009 AĞUSTOS AYI SHORT PERIOD İSTASYONLARI VERİMLİLİK GRAFİĞİ



# TÜRKİYE VE YAKIN ÇEVRESİ DEPREM ETKİNLİĞİ ( AĞUSTOS 2009 ) **Toplam: 648 Adet**



**TÜRKİYE DEPREM ETKİNLİĞİ ( 2009 YILI AĞUSTOS AYI )**

No	Tarih - Date			Zaman - Time			Koordinat - Coordinate			Derinlik - Depth		Magnitüd - Magnitude									
	Gün	Ay	Yıl	Saat	Dak.	San.	Enlem-K	Boylam-D	Ref	Km.	Ref	Ms	Ref	Mb	Ref	Md	Ref	MI	Ref	Mw	Ref
1	1	8	2009	0	28	54.9	39.08	29.02	R	3	R					3.0	R				
2	1	8	2009	3	5	44.2	39.65	39.66	R	5	R					2.7	R				
3	1	8	2009	4	15	20.8	39.15	33.28	R	7	R					2.8	R				
4	1	8	2009	4	19	6.4	39.74	40.36	R	6	R					2.6	R				
5	1	8	2009	6	40	10.6	40.15	33.22	R	4	R					3.3	R				
6	1	8	2009	9	38	31.5	37.74	35.08	R	12	R					2.5	R				
7	1	8	2009	10	32	36.4	39.08	44.18	R	11	R					2.5	R				
8	1	8	2009	12	20	1.5	36.25	29.06	R	8	R					2.7	R				
9	1	8	2009	13	38	8.1	39.87	29.25	R	7	R					2.7	R				
10	1	8	2009	14	37	39.1	38.61	38.49	R	18	R					2.4	R				
11	1	8	2009	14	51	40.3	37.23	28.19	R	9	R					2.4	R				
12	1	8	2009	14	56	52.2	37.32	28.29	R	12	R					2.6	R				
13	1	8	2009	14	57	13.2	40.79	26.38	R	5	R					2.4	R				
14	1	8	2009	15	17	5.2	37.24	28.19	R	4	R					2.4	R				
15	1	8	2009	15	45	33.4	36.17	27.52	R	15	R					2.9	R				
16	1	8	2009	15	46	16.6	40.35	27.91	R	15	R					2.5	R				
17	1	8	2009	16	4	34.7	37.76	35.18	R	8	R					2.7	R				
18	1	8	2009	16	42	39.0	40.37	28.28	R	10	R							4.3	R		
19	1	8	2009	16	48	19.4	40.41	28.27	R	7	R					2.8	R				
20	1	8	2009	16	51	54.9	40.27	28.23	R	5	R					2.2	R				

**TÜRKİYE DEPREM ETKİNLİĞİ ( 2009 YILI AĞUSTOS AYI )**

No	Tarih - Date			Zaman - Time			Koordinat - Coordinate			Derinlik - Depth		Magnitüd - Magnitude									
	Gün	Ay	Yıl	Saat	Dak.	San.	Enlem-K	Boylam-D	Ref	Km.	Ref	Ms	Ref	Mb	Ref	Md	Ref	MI	Ref	Mw	Ref
21	1	8	2009	16	52	56.1	40.37	28.28	R	8	R					2.9	R				
22	1	8	2009	17	19	16.2	40.36	28.29	R	12	R					2.6	R				
23	1	8	2009	17	30	59.6	40.35	28.31	R	8	R					2.3	R				
24	1	8	2009	17	31	45.4	40.45	28.26	R	9	R					2.3	R				
25	1	8	2009	17	35	2.9	37.61	35.64	R	7	R					2.6	R				
26	1	8	2009	17	49	54.0	40.39	28.26	R	5	R					2.5	R				
27	1	8	2009	18	18	49.8	40.38	28.28	R	9	R					2.3	R				
28	1	8	2009	18	22	28.7	40.38	28.27	R	7	R					2.6	R				
29	1	8	2009	18	25	51.9	39.62	39.79	R	4	R					2.8	R				
30	1	8	2009	18	42	19.8	37.04	28.28	R	22	R					2.5	R				
31	1	8	2009	19	22	8.5	40.37	28.29	R	5	R					2.4	R				
32	1	8	2009	21	4	44.2	37.62	26.69	R	5	R					2.7	R				
33	1	8	2009	21	8	10.5	39.61	27.80	R	2	R					2.5	R				
34	1	8	2009	21	15	56.0	41.58	43.43	R	5	R							3.7	R		
35	1	8	2009	22	21	36.8	37.82	42.96	R	5	R					2.8	R				
36	2	8	2009	0	8	56.2	39.16	27.74	R	7	R					2.4	R				
37	2	8	2009	0	9	43.5	37.04	28.11	R	10	R							3.4	R		
38	2	8	2009	0	13	23.5	39.19	27.75	R	8	R					2.9	R				
39	2	8	2009	0	18	30.9	39.11	27.77	R	19	R					2.6	R				
40	2	8	2009	0	51	37.2	37.57	35.63	R	12	R					2.5	R				

**TÜRKİYE DEPREM ETKİNLİĞİ ( 2009 YILI AĞUSTOS AYI )**

No	Tarih - Date			Zaman - Time			Koordinat - Coordinate			Derinlik - Depth		Magnitüd - Magnitude									
	Gün	Ay	Yıl	Saat	Dak.	San.	Enlem-K	Boylam-D	Ref	Km.	Ref	Ms	Ref	Mb	Ref	Md	Ref	MI	Ref	Mw	Ref
41	2	8	2009	0	51	50.2	39.19	27.77	R	11	R					2.7	R				
42	2	8	2009	0	58	30.8	40.38	28.27	R	25	R					2.3	R				
43	2	8	2009	1	16	48.2	37.57	30.54	R	8	R					2.5	R				
44	2	8	2009	1	21	7.2	40.38	28.27	R	2	R					3.2	R	3.2	R		
45	2	8	2009	1	42	21.0	39.14	27.83	R	5	R					2.6	R				
46	2	8	2009	1	55	36.2	39.47	33.09	R	5	R					2.8	R				
47	2	8	2009	2	22	39.2	40.38	28.26	R	5	R					3.1	R				
48	2	8	2009	4	12	7.7	40.45	30.33	R	14	R					2.5	R				
49	2	8	2009	4	18	44.7	38.27	26.56	R	8	R					3.7	R				
50	2	8	2009	4	52	30.0	38.11	30.91	R	8	R					2.6	R				
51	2	8	2009	4	57	14.4	40.14	27.58	R	10	R					2.4	R				
52	2	8	2009	6	51	31.4	37.25	28.21	R	4	R					2.3	R				
53	2	8	2009	7	43	48.1	38.21	26.62	R	8	R					2.7	R				
54	2	8	2009	11	42	35.4	38.49	30.80	R	15	R					2.5	R				
55	2	8	2009	12	27	52.6	39.61	40.00	R	10	R					2.7	R				
56	2	8	2009	13	0	21.2	36.96	29.15	R	5	R					2.5	R				
57	2	8	2009	14	34	6.5	35.77	27.02	R	13	R					2.9	R				
58	2	8	2009	14	59	14.3	37.57	35.67	R	14	R					2.4	R				
59	2	8	2009	17	38	26.9	39.85	31.46	R	8	R					2.5	R				
60	2	8	2009	17	48	33.0	37.19	28.18	R	11	R					2.4	R				

**TÜRKİYE DEPREM ETKİNLİĞİ ( 2009 YILI AĞUSTOS AYI )**

No	Tarih - Date			Zaman - Time			Koordinat - Coordinate			Derinlik - Depth		Magnitüd - Magnitude									
	Gün	Ay	Yıl	Saat	Dak.	San.	Enlem-K	Boylam-D	Ref	Km.	Ref	Ms	Ref	Mb	Ref	Md	Ref	MI	Ref	Mw	Ref
61	2	8	2009	19	56	26.8	39.68	38.20	R	11	R					3.1	R				
62	2	8	2009	20	22	33.6	38.12	26.89	R	5	R					2.7	R				
63	2	8	2009	22	5	40.8	37.67	27.04	R	9	R					2.6	R				
64	3	8	2009	0	4	21.0	37.67	26.90	R	5	R					3.2	R				
65	3	8	2009	0	13	57.3	39.75	40.35	R	6	R					2.7	R				
66	3	8	2009	1	5	44.4	37.64	26.72	R	5	R					2.5	R				
67	3	8	2009	1	6	57.0	35.50	27.24	R	65	R					3.6	R				
68	3	8	2009	2	55	57.1	41.05	39.04	R	13	R					3.1	R				
69	3	8	2009	3	28	24.3	38.22	38.27	R	9	R					2.8	R				
70	3	8	2009	4	44	21.6	39.08	28.97	R	9	R					2.7	R				
71	3	8	2009	7	13	13.8	39.48	32.97	R	7	R					2.9	R				
72	3	8	2009	9	44	28.3	41.35	29.08	R	22	R					2.1	R				
73	3	8	2009	11	19	17.0	37.94	39.25	R	16	R					2.8	R				
74	3	8	2009	11	40	17.2	39.90	29.33	R	5	R					2.7	R				
75	3	8	2009	12	47	19.8	39.10	27.89	R	5	R					3.3	R				
76	3	8	2009	12	47	35.0	36.88	27.91	R	9	R					2.8	R				
77	3	8	2009	17	34	29.8	36.90	28.65	R	2	R					2.5	R				
78	3	8	2009	18	26	2.5	36.87	28.63	R	3	R					2.8	R				
79	3	8	2009	18	49	14.4	40.00	39.96	R	9	R					2.9	R				
80	3	8	2009	23	50	11.4	37.56	35.72	R	7	R					3.7	R				

**TÜRKİYE DEPREM ETKİNLİĞİ ( 2009 YILI AĞUSTOS AYI )**

No	Tarih - Date			Zaman - Time			Koordinat - Coordinate			Derinlik - Depth		Magnitüd - Magnitude									
	Gün	Ay	Yıl	Saat	Dak.	San.	Enlem-K	Boylam-D	Ref	Km.	Ref	Ms	Ref	Mb	Ref	Md	Ref	MI	Ref	Mw	Ref
81	4	8	2009	0	32	20.0	36.98	29.46	R	6	R					3.2	R				
82	4	8	2009	2	45	42.3	38.16	26.63	R	5	R					3.4	R				
83	4	8	2009	3	19	18.2	40.48	25.46	R	9	R					3.3	R				
84	4	8	2009	4	4	12.5	37.56	35.62	R	5	R					2.9	R				
85	4	8	2009	6	33	15.7	37.22	28.18	R	5	R					2.7	R				
86	4	8	2009	8	53	3.4	37.19	28.19	R	8	R					2.4	R				
87	4	8	2009	9	25	52.9	39.90	28.86	R	3	R					2.8	R				
88	4	8	2009	9	37	53.4	40.55	35.26	R	10	R					2.7	R				
89	4	8	2009	9	42	32.5	35.37	33.44	R	5	R					2.3	R				
90	4	8	2009	10	22	49.1	38.04	38.13	R	18	R					2.4	R				
91	4	8	2009	11	37	40.5	40.42	39.75	R	5	R					2.7	R				
92	4	8	2009	12	3	55.1	38.19	31.99	R	6	R					2.5	R				
93	4	8	2009	12	28	56.2	39.34	32.13	R	6	R					2.9	R				
94	4	8	2009	13	10	13.5	40.49	27.96	R	7	R					2.6	R				
95	4	8	2009	13	33	15.7	37.35	31.91	R	4	R					2.8	R				
96	4	8	2009	14	21	12.0	37.96	29.00	R	5	R					2.8	R				
97	4	8	2009	17	36	4.6	37.70	42.97	R	5	R					2.8	R				
98	4	8	2009	18	41	7.5	39.18	27.90	R	4	R					2.6	R				
99	4	8	2009	19	20	28.7	40.07	27.51	R	7	R					2.7	R				
100	4	8	2009	22	31	4.4	39.01	26.74	R	5	R					2.7	R				



**TÜRKİYE DEPREM ETKİNLİĞİ ( 2009 YILI AĞUSTOS AYI )**

No	Tarih - Date			Zaman - Time			Koordinat - Coordinate			Derinlik - Depth		Magnitüd - Magnitude									
	Gün	Ay	Yıl	Saat	Dak.	San.	Enlem-K	Boylam-D	Ref	Km.	Ref	Ms	Ref	Mb	Ref	Md	Ref	MI	Ref	Mw	Ref
101	4	8	2009	22	52	26.5	37.38	36.36	R	9	R					2.8	R				
102	5	8	2009	2	37	30.2	39.23	40.23	R	8	R					2.8	R				
103	5	8	2009	2	37	44.0	40.70	36.60	R	5	R					2.8	R				
104	5	8	2009	5	58	4.1	40.26	33.05	R	22	R					2.8	R				
105	5	8	2009	7	48	59.9	43.39	28.75	R	5	R			4.7	N			5.1	R		
106	5	8	2009	9	28	22.4	37.26	28.22	R	4	R					2.4	R				
107	5	8	2009	9	42	34.8	39.96	33.54	R	4	R					2.7	R				
108	5	8	2009	10	1	55.6	40.66	29.40	R	5	R					2.4	R				
109	5	8	2009	10	2	18.6	39.98	43.06	R	5	R					2.7	R				
110	5	8	2009	10	30	1.5	37.43	38.96	R	10	R					2.8	R				
111	5	8	2009	11	59	57.4	39.36	31.98	R	5	R					2.9	R				
112	5	8	2009	14	0	45.6	37.26	28.22	R	7	R					2.7	R				
113	5	8	2009	14	8	4.9	37.25	28.17	R	5	R					2.6	R				
114	5	8	2009	15	10	35.7	36.94	29.29	R	5	R					2.7	R				
115	5	8	2009	15	31	9.7	38.11	26.60	R	5	R					3.4	R				
116	5	8	2009	15	39	5.4	38.14	26.91	R	12	R					3.0	R				
117	5	8	2009	17	4	57.7	40.36	25.97	R	7	R					3.2	R				
118	5	8	2009	18	7	59.4	39.95	39.07	R	8	R					2.6	R				
119	5	8	2009	19	16	31.9	40.40	25.84	R	8	R							3.7	R		
120	5	8	2009	19	28	27.6	39.23	27.87	R	5	R							3.8	R		

**TÜRKİYE DEPREM ETKİNLİĞİ ( 2009 YILI AĞUSTOS AYI )**

No	Tarih - Date			Zaman - Time			Koordinat - Coordinate			Derinlik - Depth		Magnitüd - Magnitude									
	Gün	Ay	Yıl	Saat	Dak.	San.	Enlem-K	Boylam-D	Ref	Km.	Ref	Ms	Ref	Mb	Ref	Md	Ref	MI	Ref	Mw	Ref
121	5	8	2009	20	32	4.0	39.65	26.44	R	13	R					2.7	R				
122	5	8	2009	20	55	36.2	37.97	26.93	R	14	R					2.7	R				
123	5	8	2009	21	7	18.8	39.06	28.97	R	9	R					2.7	R				
124	5	8	2009	22	17	29.3	39.62	26.24	R	11	R					2.8	R				
125	6	8	2009	0	32	34.8	36.02	26.85	R	9	R					2.9	R				
126	6	8	2009	1	10	47.8	39.63	38.15	R	8	R					2.8	R				
127	6	8	2009	2	54	29.6	36.19	26.90	R	32	R					3.1	R				
128	6	8	2009	10	38	54.6	37.82	29.97	R	12	R					2.7	R				
129	6	8	2009	11	6	45.2	35.81	27.98	R	7	R							2.9	R		
130	6	8	2009	11	33	36.7	39.54	35.40	R	8	R					2.9	R				
131	6	8	2009	11	48	54.8	37.69	37.93	R	5	R					2.7	R				
132	6	8	2009	14	54	28.6	37.25	28.22	R	4	R					2.5	R				
133	6	8	2009	19	28	45.2	36.10	28.37	R	9	R					2.9	R				
134	6	8	2009	21	50	54.1	40.90	28.72	R	5	R					2.8	R				
135	6	8	2009	22	35	42.0	39.01	41.24	R	5	R					3.3	R				
136	7	8	2009	1	42	51.1	38.93	26.87	R	9	R					2.8	R				
137	7	8	2009	3	53	33.7	40.93	28.51	R	5	R					2.6	R				
138	7	8	2009	6	12	58.5	36.13	28.53	R	20	R					2.6	R				
139	7	8	2009	6	18	25.2	37.03	28.27	R	16	R					2.4	R				
140	7	8	2009	6	37	33.4	36.20	27.30	R	80	R					3.0	R				

**TÜRKİYE DEPREM ETKİNLİĞİ ( 2009 YILI AĞUSTOS AYI )**

No	Tarih - Date			Zaman - Time			Koordinat - Coordinate			Derinlik - Depth		Magnitüd - Magnitude									
	Gün	Ay	Yıl	Saat	Dak.	San.	Enlem-K	Boylam-D	Ref	Km.	Ref	Ms	Ref	Mb	Ref	Md	Ref	MI	Ref	Mw	Ref
141	7	8	2009	7	45	18.4	37.16	39.14	R	7	R					2.8	R				
142	7	8	2009	8	48	27.6	39.58	33.24	R	4	R					2.7	R				
143	7	8	2009	8	49	10.6	37.12	28.15	R	5	R					2.5	R				
144	7	8	2009	9	15	13.2	37.27	28.23	R	4	R					2.7	R				
145	7	8	2009	10	57	47.5	40.25	41.32	R	8	R					2.6	R				
146	7	8	2009	11	5	7.2	38.39	27.36	R	3	R					2.7	R				
147	7	8	2009	11	6	0.8	38.63	39.23	R	10	R					2.7	R				
148	7	8	2009	13	11	56.6	38.23	38.11	R	8	R					2.4	R				
149	7	8	2009	13	43	44.6	38.27	38.13	R	10	R					2.4	R				
150	7	8	2009	13	57	38.0	38.44	39.15	R	12	R					2.7	R				
151	7	8	2009	16	14	28.3	35.91	26.69	R	85	R							4.1	R		
152	7	8	2009	21	6	32.1	37.42	28.22	R	17	R					2.4	R				
153	7	8	2009	21	23	42.6	37.71	36.36	R	7	R					2.7	R				
154	7	8	2009	23	51	47.2	38.90	39.72	R	12	R					2.6	R				
155	7	8	2009	23	57	27.7	37.95	30.94	R	15	R					3.4	R				
156	8	8	2009	0	3	15.4	38.73	39.45	R	3	R					3.1	R				
157	8	8	2009	0	22	3.1	37.96	30.95	R	7	R					2.7	R				
158	8	8	2009	6	27	4.6	37.25	28.22	R	9	R					2.5	R				
159	8	8	2009	9	11	43.6	39.09	27.56	R	22	R					2.7	R				
160	8	8	2009	10	6	34.8	38.42	30.69	R	12	R					2.4	R				

**TÜRKİYE DEPREM ETKİNLİĞİ ( 2009 YILI AĞUSTOS AYI )**

No	Tarih - Date			Zaman - Time			Koordinat - Coordinate			Derinlik - Depth		Magnitüd - Magnitude									
	Gün	Ay	Yıl	Saat	Dak.	San.	Enlem-K	Boylam-D	Ref	Km.	Ref	Ms	Ref	Mb	Ref	Md	Ref	MI	Ref	Mw	Ref
161	8	8	2009	10	39	3.8	39.80	39.50	R	7	R					2.9	R				
162	8	8	2009	10	44	56.6	40.73	41.32	R	5	R					2.5	R				
163	8	8	2009	12	43	16.1	36.95	27.82	R	14	R					2.5	R				
164	8	8	2009	13	52	38.6	40.33	27.41	R	17	R			4.3	N			4.4	R		
165	8	8	2009	14	42	59.7	40.46	27.28	R	5	R					2.4	R				
166	8	8	2009	14	50	45.0	40.58	29.21	R	20	R					2.2	R				
167	8	8	2009	18	41	6.3	37.68	26.95	R	7	R					2.7	R				
168	8	8	2009	22	44	17.5	39.79	39.52	R	4	R					2.4	R				
169	9	8	2009	0	24	57.4	39.39	40.67	R	14	R					2.4	R				
170	9	8	2009	1	22	48.2	37.57	35.67	R	10	R					2.3	R				
171	9	8	2009	2	1	16.7	39.12	29.01	R	5	R					2.8	R				
172	9	8	2009	5	3	6.8	35.28	28.57	R	30	R					3.8	R				
173	9	8	2009	10	56	35.0	39.49	28.24	R	5	R					2.6	R				
174	9	8	2009	12	45	22.0	35.59	28.41	R	8	R					3.3	R				
175	9	8	2009	16	4	33.6	38.08	42.99	R	5	R					2.8	R				
176	9	8	2009	17	11	25.0	38.03	38.03	R	3	R					2.9	R				
177	9	8	2009	18	39	57.8	34.87	34.13	R	27	R					3.0	R				
178	9	8	2009	20	6	52.2	39.08	27.93	R	5	R					2.9	R				
179	9	8	2009	22	10	34.8	40.22	37.10	R	2	R					2.5	R				
180	9	8	2009	22	26	39.7	37.36	35.76	R	12	R					2.0	R				

**TÜRKİYE DEPREM ETKİNLİĞİ ( 2009 YILI AĞUSTOS AYI )**

No	Tarih - Date			Zaman - Time			Koordinat - Coordinate			Derinlik - Depth		Magnitüd - Magnitude									
	Gün	Ay	Yıl	Saat	Dak.	San.	Enlem-K	Boylam-D	Ref	Km.	Ref	Ms	Ref	Mb	Ref	Md	Ref	MI	Ref	Mw	Ref
181	9	8	2009	23	2	39.0	40.56	35.78	R	2	R					2.9	R				
182	10	8	2009	0	6	46.1	38.66	31.85	R	11	R					2.8	R				
183	10	8	2009	0	28	2.7	38.05	43.01	R	15	R					2.8	R				
184	10	8	2009	0	30	13.3	37.57	35.69	R	15	R					2.4	R				
185	10	8	2009	1	40	2.9	36.90	43.80	R	5	R					2.8	R				
186	10	8	2009	2	37	1.1	40.87	28.03	R	9	R					2.5	R				
187	10	8	2009	4	3	30.4	36.56	27.82	R	13	R					2.3	R				
188	10	8	2009	11	17	1.3	39.96	39.26	R	7	R					2.8	R				
189	10	8	2009	13	21	51.6	37.89	29.18	R	3	R					2.8	R				
190	10	8	2009	15	7	23.6	39.90	33.07	R	2	R					2.8	R				
191	10	8	2009	15	31	0.9	37.91	29.10	R	8	R					2.7	R				
192	10	8	2009	15	39	27.2	38.88	40.72	R	5	R					2.3	R				
193	10	8	2009	15	45	9.4	37.71	39.21	R	6	R					2.8	R				
194	10	8	2009	21	0	16.3	37.16	30.65	R	101	R					3.3	R				
195	10	8	2009	21	23	45.2	37.79	29.03	R	5	R					3.2	R				
196	11	8	2009	1	22	48.8	37.52	35.67	R	15	R					2.3	R				
197	11	8	2009	3	11	55.3	40.30	35.28	R	5	R					2.8	R				
198	11	8	2009	4	20	46.6	39.32	42.75	R	5	R					3.4	R				
199	11	8	2009	4	28	0.4	39.30	42.64	R	10	R					2.8	R				
200	11	8	2009	4	32	34.3	39.23	42.70	R	9	R					2.8	R				

**TÜRKİYE DEPREM ETKİNLİĞİ ( 2009 YILI AĞUSTOS AYI )**

No	Tarih - Date			Zaman - Time			Koordinat - Coordinate			Derinlik - Depth		Magnitüd - Magnitude									
	Gün	Ay	Yıl	Saat	Dak.	San.	Enlem-K	Boylam-D	Ref	Km.	Ref	Ms	Ref	Mb	Ref	Md	Ref	MI	Ref	Mw	Ref
201	11	8	2009	7	39	21.5	37.89	29.11	R	15	R					2.7	R				
202	11	8	2009	12	20	41.0	40.43	39.77	R	5	R					2.6	R				
203	11	8	2009	12	45	16.7	40.88	33.90	R	9	R					2.6	R				
204	11	8	2009	12	59	19.4	40.86	28.61	R	5	R					2.4	R				
205	11	8	2009	14	47	39.6	37.35	28.38	R	12	R					2.9	R				
206	11	8	2009	14	51	46.8	37.30	28.25	R	7	R					2.6	R				
207	11	8	2009	22	11	58.7	37.70	36.13	R	5	R					3.2	R				
208	11	8	2009	22	40	16.1	34.13	26.25	R	8	R			4.1	N			4.1	R		
209	12	8	2009	0	53	9.7	40.46	30.62	R	5	R					1.8	R				
210	12	8	2009	3	35	28.9	39.11	29.06	R	5	R							3.6	R		
211	12	8	2009	5	34	34.2	37.92	29.09	R	5	R					2.9	R				
212	12	8	2009	6	28	2.1	39.39	28.72	R	16	R					2.8	R				
213	12	8	2009	6	39	58.7	37.78	36.01	R	10	R					3.2	R				
214	12	8	2009	9	52	35.8	37.69	38.85	R	6	R					2.9	R				
215	12	8	2009	12	48	46.4	37.71	38.01	R	20	R					2.7	R				
216	12	8	2009	13	23	32.4	40.17	33.35	R	7	R					2.7	R				
217	12	8	2009	13	45	5.4	38.69	35.77	R	5	R					3.1	R				
218	12	8	2009	14	15	57.7	38.01	38.24	R	23	R					2.4	R				
219	12	8	2009	14	18	37.9	37.67	34.43	R	22	R					2.6	R				
220	12	8	2009	14	59	39.3	36.85	29.32	R	8	R					3.2	R				

**TÜRKİYE DEPREM ETKİNLİĞİ ( 2009 YILI AĞUSTOS AYI )**

No	Tarih - Date			Zaman - Time			Koordinat - Coordinate			Derinlik - Depth		Magnitüd - Magnitude									
	Gün	Ay	Yıl	Saat	Dak.	San.	Enlem-K	Boylam-D	Ref	Km.	Ref	Ms	Ref	Mb	Ref	Md	Ref	MI	Ref	Mw	Ref
221	12	8	2009	15	27	54.5	37.30	28.24	R	7	R					2.6	R				
222	12	8	2009	16	22	11.0	37.03	38.87	R	35	R					2.8	R				
223	12	8	2009	16	31	55.5	39.44	33.07	R	6	R					2.2	R				
224	12	8	2009	20	23	26.6	38.26	38.77	R	5	R					3.8	R	3.6	R		
225	13	8	2009	0	21	53.8	38.91	27.18	R	5	R					3.2	R				
226	13	8	2009	0	45	32.4	36.21	35.92	R	14	R					3.1	R				
227	13	8	2009	1	42	52.5	37.74	26.90	R	5	R					3.1	R				
228	13	8	2009	3	30	35.5	40.87	29.35	R	2	R					3.0	R				
229	13	8	2009	4	17	0.4	36.76	27.15	R	5	R					2.7	R				
230	13	8	2009	5	34	23.3	37.39	28.24	R	2	R					2.4	R				
231	13	8	2009	6	29	14.2	38.52	31.85	R	9	R					2.5	R				
232	13	8	2009	7	45	13.7	37.25	30.40	R	18	R					2.5	R				
233	13	8	2009	9	0	27.2	38.52	44.29	R	5	R					2.7	R				
234	13	8	2009	11	22	4.9	39.11	39.63	R	7	R					2.6	R				
235	13	8	2009	13	29	30.4	35.86	28.63	R	20	R					3.7	R	3.7	R		
236	13	8	2009	14	10	15.5	36.75	27.08	R	134	R							3.4	R		
237	13	8	2009	14	53	47.3	37.25	28.17	R	5	R					2.2	R				
238	13	8	2009	14	54	30.0	41.44	35.93	R	7	R					3.0	R				
239	13	8	2009	15	10	34.1	38.31	38.43	R	17	R					2.6	R				
240	13	8	2009	23	16	6.7	40.22	27.27	R	5	R					2.2	R				

**TÜRKİYE DEPREM ETKİNLİĞİ ( 2009 YILI AĞUSTOS AYI )**

No	Tarih - Date			Zaman - Time			Koordinat - Coordinate			Derinlik - Depth		Magnitüd - Magnitude									
	Gün	Ay	Yıl	Saat	Dak.	San.	Enlem-K	Boylam-D	Ref	Km.	Ref	Ms	Ref	Mb	Ref	Md	Ref	MI	Ref	Mw	Ref
241	14	8	2009	0	30	58.5	36.25	29.65	R	20	R					2.8	R				
242	14	8	2009	1	42	0.3	38.79	39.03	R	16	R					3.0	R				
243	14	8	2009	2	0	24.0	37.88	36.47	R	7	R					3.7	R				
244	14	8	2009	2	49	52.6	38.10	30.98	R	8	R					3.3	R				
245	14	8	2009	4	42	55.4	36.85	27.39	R	5	R					1.7	R				
246	14	8	2009	7	12	55.6	38.11	30.93	R	24	R					2.6	R				
247	14	8	2009	7	41	0.7	37.21	28.18	R	5	R					2.5	R				
248	14	8	2009	7	59	3.4	37.16	27.89	R	14	R					2.4	R				
249	14	8	2009	9	7	12.1	36.54	31.16	R	24	R					2.8	R				
250	14	8	2009	9	13	53.6	39.97	32.33	R	5	R					2.6	R				
251	14	8	2009	9	14	45.0	38.39	42.91	R	5	R					2.8	R				
252	14	8	2009	10	33	53.1	36.53	28.13	R	62	R					2.5	R				
253	14	8	2009	11	10	53.4	38.35	39.01	R	14	R					2.5	R				
254	14	8	2009	11	30	28.7	38.55	31.62	R	11	R					2.6	R				
255	14	8	2009	11	41	44.2	37.39	28.18	R	14	R					2.4	R				
256	14	8	2009	12	13	8.1	38.74	30.97	R	23	R					2.6	R				
257	14	8	2009	12	53	40.9	41.41	35.93	R	5	R					2.6	R				
258	14	8	2009	13	38	38.8	39.29	40.08	R	14	R					2.6	R				
259	14	8	2009	13	53	50.0	38.12	32.67	R	9	R					2.6	R				
260	14	8	2009	13	56	24.3	40.20	38.23	R	11	R					2.8	R				



**TÜRKİYE DEPREM ETKİNLİĞİ ( 2009 YILI AĞUSTOS AYI )**

No	Tarih - Date			Zaman - Time			Koordinat - Coordinate			Derinlik - Depth		Magnitüd - Magnitude									
	Gün	Ay	Yıl	Saat	Dak.	San.	Enlem-K	Boylam-D	Ref	Km.	Ref	Ms	Ref	Mb	Ref	Md	Ref	MI	Ref	Mw	Ref
261	14	8	2009	14	36	14.8	40.44	29.22	R	12	R					2.8	R				
262	14	8	2009	14	45	55.2	37.23	28.17	R	6	R					2.7	R				
263	14	8	2009	14	52	16.0	38.73	34.93	R	7	R					3.1	R				
264	14	8	2009	14	54	47.9	37.23	28.18	R	9	R					2.6	R				
265	14	8	2009	18	37	56.8	40.57	28.96	R	5	R					1.8	R				
266	14	8	2009	18	43	7.4	40.82	30.83	R	8	R					3.7	R				
267	14	8	2009	18	48	48.0	40.55	30.82	R	29	R					2.8	R				
268	14	8	2009	22	24	37.7	40.63	29.02	R	12	R					2.6	R				
269	14	8	2009	23	5	4.1	40.44	28.85	R	10	R					1.3	R				
270	15	8	2009	2	11	57.9	40.21	28.97	R	4	R					3.2	R				
271	15	8	2009	3	29	4.1	37.51	38.72	R	4	R					2.7	R				
272	15	8	2009	3	53	6.9	38.90	28.65	R	19	R					2.8	R				
273	15	8	2009	4	32	16.9	37.82	32.15	R	14	R					2.6	R				
274	15	8	2009	6	32	47.6	37.28	28.24	R	15	R					2.5	R				
275	15	8	2009	8	1	11.1	39.05	27.64	R	5	R					2.7	R				
276	15	8	2009	8	28	56.3	36.18	32.86	R	10	R					3.0	R				
277	15	8	2009	11	53	23.4	40.39	39.77	R	5	R					2.3	R				
278	15	8	2009	14	27	10.3	41.28	36.39	R	5	R					2.9	R				
279	15	8	2009	14	44	14.0	37.29	28.24	R	5	R					2.7	R				
280	15	8	2009	15	6	39.2	37.86	29.23	R	6	R					2.8	R				

**TÜRKİYE DEPREM ETKİNLİĞİ ( 2009 YILI AĞUSTOS AYI )**

No	Tarih - Date			Zaman - Time			Koordinat - Coordinate			Derinlik - Depth		Magnitüd - Magnitude									
	Gün	Ay	Yıl	Saat	Dak.	San.	Enlem-K	Boylam-D	Ref	Km.	Ref	Ms	Ref	Mb	Ref	Md	Ref	MI	Ref	Mw	Ref
281	15	8	2009	15	15	2.8	39.24	27.51	R	10	R					2.8	R				
282	15	8	2009	15	46	35.4	40.59	28.89	R	14	R					2.4	R				
283	15	8	2009	17	57	13.2	39.39	33.20	R	6	R					2.9	R				
284	15	8	2009	19	6	57.2	35.94	34.43	R	13	R					3.7	R				
285	15	8	2009	20	54	26.4	36.04	34.28	R	27	R					2.8	R				
286	15	8	2009	21	21	57.8	41.47	39.21	R	5	R					3.7	R				
287	15	8	2009	22	52	44.6	38.92	25.84	R	5	R							3.7	R		
288	16	8	2009	0	0	17.0	37.07	28.32	R	22	R					2.5	R				
289	16	8	2009	0	34	10.0	36.95	27.72	R	14	R					3.4	R				
290	16	8	2009	2	15	8.1	36.94	27.77	R	9	R					2.3	R				
291	16	8	2009	4	54	36.7	36.94	27.76	R	14	R					2.2	R				
292	16	8	2009	4	59	1.5	39.03	43.72	R	5	R					2.3	R				
293	16	8	2009	5	11	31.9	37.91	32.27	R	2	R					2.6	R				
294	16	8	2009	5	47	57.3	34.07	25.43	N	10	N			4.1	N						
295	16	8	2009	8	50	0.5	37.27	28.19	R	5	R					2.7	R				
296	16	8	2009	8	58	36.0	37.29	28.23	R	5	R					2.7	R				
297	16	8	2009	10	23	28.2	37.98	30.03	R	8	R					2.5	R				
298	16	8	2009	14	21	51.5	38.20	38.22	R	7	R					2.5	R				
299	16	8	2009	14	50	33.0	39.04	27.53	R	15	R					2.7	R				
300	16	8	2009	15	1	42.5	37.28	28.22	R	7	R					2.5	R				

**TÜRKİYE DEPREM ETKİNLİĞİ ( 2009 YILI AĞUSTOS AYI )**

No	Tarih - Date			Zaman - Time			Koordinat - Coordinate			Derinlik - Depth		Magnitüd - Magnitude									
	Gün	Ay	Yıl	Saat	Dak.	San.	Enlem-K	Boylam-D	Ref	Km.	Ref	Ms	Ref	Mb	Ref	Md	Ref	MI	Ref	Mw	Ref
301	16	8	2009	15	4	9.9	37.16	28.16	R	10	R					2.2	R				
302	16	8	2009	16	10	1.1	39.55	34.55	R	6	R					3.0	R				
303	16	8	2009	18	37	21.2	39.23	27.96	R	8	R					2.7	R				
304	16	8	2009	22	45	22.7	40.62	36.83	R	5	R					2.9	R				
305	17	8	2009	0	1	10.3	39.70	44.14	R	5	R					2.9	R				
306	17	8	2009	0	20	45.0	39.89	29.25	R	8	R					2.8	R				
307	17	8	2009	1	11	13.8	38.56	44.98	R	5	R					3.5	R				
308	17	8	2009	1	32	49.1	36.90	27.72	R	76	R					2.9	R				
309	17	8	2009	1	52	11.0	40.59	36.41	R	3	R					3.1	R				
310	17	8	2009	2	26	58.1	39.53	31.24	R	6	R					2.8	R				
311	17	8	2009	2	43	10.7	37.67	26.83	R	2	R					2.9	R				
312	17	8	2009	3	17	34.8	40.27	41.43	R	5	R					2.7	R				
313	17	8	2009	3	24	30.8	39.83	40.10	R	10	R					3.0	R				
314	17	8	2009	3	52	38.7	39.06	28.98	R	15	R					2.9	R				
315	17	8	2009	4	37	2.2	37.68	38.77	R	13	R					3.2	R				
316	17	8	2009	6	0	41.1	37.71	26.91	R	5	R					2.8	R				
317	17	8	2009	9	47	54.5	37.94	27.46	R	8	R					2.8	R				
318	17	8	2009	14	47	40.1	37.30	28.24	R	5	R					2.5	R				
319	17	8	2009	14	57	16.9	39.11	29.04	R	5	R					3.2	R				
320	17	8	2009	16	57	39.7	39.95	41.95	R	22	R					2.7	R				

**TÜRKİYE DEPREM ETKİNLİĞİ ( 2009 YILI AĞUSTOS AYI )**

No	Tarih - Date			Zaman - Time			Koordinat - Coordinate			Derinlik - Depth		Magnitüd - Magnitude									
	Gün	Ay	Yıl	Saat	Dak.	San.	Enlem-K	Boylam-D	Ref	Km.	Ref	Ms	Ref	Mb	Ref	Md	Ref	MI	Ref	Mw	Ref
321	17	8	2009	18	4	47.9	39.12	29.03	R	5	R					3.1	R				
322	17	8	2009	19	34	37.5	40.12	27.32	R	6	R					2.7	R				
323	17	8	2009	23	46	39.1	40.76	27.41	R	5	R					2.8	R				
324	18	8	2009	1	18	51.1	39.08	29.50	R	7	R					2.8	R				
325	18	8	2009	3	0	9.4	37.42	30.18	R	5	R					3.1	R				
326	18	8	2009	5	32	3.6	36.50	28.28	R	29	R					2.9	R				
327	18	8	2009	6	11	41.4	39.51	28.09	R	11	R							3.5	R		
328	18	8	2009	7	46	58.1	39.07	27.47	R	11	R					2.8	R				
329	18	8	2009	8	52	39.4	37.59	36.38	R	8	R					2.9	R				
330	18	8	2009	9	5	51.0	39.72	26.29	R	10	R					2.6	R				
331	18	8	2009	13	31	31.6	40.22	31.36	R	5	R					2.4	R				
332	18	8	2009	14	34	56.3	38.13	32.64	R	10	R					2.5	R				
333	18	8	2009	15	3	55.3	40.33	27.84	R	6	R					2.6	R				
334	18	8	2009	16	25	12.9	40.88	28.59	R	5	R					2.9	R				
335	18	8	2009	17	41	42.0	37.97	27.51	R	9	R					2.6	R				
336	18	8	2009	18	6	20.1	36.93	27.75	R	20	R					2.3	R				
337	18	8	2009	19	6	25.3	40.08	27.65	R	12	R					3.1	R				
338	18	8	2009	19	36	21.1	38.83	27.96	R	10	R					2.9	R				
339	18	8	2009	19	55	14.9	40.40	25.83	R	11	R					2.8	R				
340	18	8	2009	21	10	57.1	38.99	26.55	R	5	R					3.0	R				

**TÜRKİYE DEPREM ETKİNLİĞİ ( 2009 YILI AĞUSTOS AYI )**

No	Tarih - Date			Zaman - Time			Koordinat - Coordinate			Derinlik - Depth		Magnitüd - Magnitude									
	Gün	Ay	Yıl	Saat	Dak.	San.	Enlem-K	Boylam-D	Ref	Km.	Ref	Ms	Ref	Mb	Ref	Md	Ref	MI	Ref	Mw	Ref
341	18	8	2009	21	25	15.4	40.03	27.73	R	7	R					2.3	R				
342	18	8	2009	21	52	23.0	39.45	32.23	R	5	R					3.4	R				
343	18	8	2009	23	8	10.6	39.38	40.72	R	8	R					3.1	R				
344	18	8	2009	23	27	31.6	39.95	39.65	R	17	R					2.8	R				
345	18	8	2009	23	34	23.0	40.40	26.19	R	8	R					2.9	R				
346	19	8	2009	0	0	51.0	36.03	32.22	R	16	R					2.7	R				
347	19	8	2009	0	5	44.3	40.20	27.40	R	8	R					2.5	R				
348	19	8	2009	1	16	47.6	37.12	35.41	R	11	R					2.4	R				
349	19	8	2009	2	6	31.8	40.26	42.00	R	5	R					2.8	R				
350	19	8	2009	2	13	14.4	39.26	25.90	R	8	R					3.3	R				
351	19	8	2009	2	54	12.7	39.49	27.07	R	11	R					2.6	R				
352	19	8	2009	3	48	47.0	37.75	29.10	R	29	R					2.7	R				
353	19	8	2009	4	4	56.2	37.75	29.20	R	6	R					2.6	R				
354	19	8	2009	4	16	20.6	37.73	29.19	R	15	R					2.6	R				
355	19	8	2009	5	31	13.8	37.16	36.28	R	5	R					2.9	R				
356	19	8	2009	5	39	0.6	40.31	41.59	R	5	R					2.8	R				
357	19	8	2009	5	48	4.7	37.72	29.17	R	5	R					2.7	R				
358	19	8	2009	5	55	46.7	38.11	30.16	R	6	R					2.8	R				
359	19	8	2009	6	13	43.0	36.81	26.55	R	5	R					2.7	R				
360	19	8	2009	6	18	10.6	37.90	27.47	R	24	R					2.6	R				

**TÜRKİYE DEPREM ETKİNLİĞİ ( 2009 YILI AĞUSTOS AYI )**

No	Tarih - Date			Zaman - Time			Koordinat - Coordinate			Derinlik - Depth		Magnitüd - Magnitude									
	Gün	Ay	Yıl	Saat	Dak.	San.	Enlem-K	Boylam-D	Ref	Km.	Ref	Ms	Ref	Mb	Ref	Md	Ref	MI	Ref	Mw	Ref
361	19	8	2009	7	20	15.0	37.26	28.18	R	5	R					2.6	R				
362	19	8	2009	9	19	45.3	39.97	39.23	R	9	R					3.0	R				
363	19	8	2009	9	49	14.0	37.25	28.18	R	11	R					2.5	R				
364	19	8	2009	9	58	45.0	39.49	28.07	R	2	R					3.1	R				
365	19	8	2009	10	9	3.2	39.23	27.70	R	10	R					2.8	R				
366	19	8	2009	10	22	33.6	39.88	39.59	R	8	R					2.9	R				
367	19	8	2009	10	38	42.6	39.88	39.64	R	14	R					2.9	R				
368	19	8	2009	11	43	56.3	35.89	27.29	R	21	R					3.1	R				
369	19	8	2009	12	52	30.7	39.54	37.65	R	5	R					2.8	R				
370	19	8	2009	14	43	2.9	37.58	35.65	R	5	R					3.0	R				
371	19	8	2009	16	4	15.2	39.41	39.14	R	5	R					3.1	R				
372	19	8	2009	16	49	48.7	36.98	28.85	R	9	R					2.4	R				
373	19	8	2009	17	52	36.3	36.37	41.16	R	5	R					3.3	R				
374	19	8	2009	19	18	59.6	36.03	29.66	R	11	R					3.3	R				
375	19	8	2009	19	28	41.0	40.70	25.76	R	23	R					2.6	R				
376	19	8	2009	20	52	14.4	36.12	26.86	R	11	R					2.8	R				
377	19	8	2009	21	52	34.9	37.29	42.68	R	9	R					3.1	R				
378	19	8	2009	22	36	21.5	39.10	29.01	R	9	R					3.4	R				
379	19	8	2009	23	59	50.5	39.38	39.12	R	9	R					2.7	R				
380	20	8	2009	0	25	42.1	36.20	28.93	R	15	R					3.4	R				

**TÜRKİYE DEPREM ETKİNLİĞİ ( 2009 YILI AĞUSTOS AYI )**

No	Tarih - Date			Zaman - Time			Koordinat - Coordinate			Derinlik - Depth		Magnitüd - Magnitude									
	Gün	Ay	Yıl	Saat	Dak.	San.	Enlem-K	Boylam-D	Ref	Km.	Ref	Ms	Ref	Mb	Ref	Md	Ref	MI	Ref	Mw	Ref
381	20	8	2009	1	32	23.4	35.84	30.59	R	33	R					3.3	R				
382	20	8	2009	5	0	56.1	40.78	29.17	R	5	R					2.6	R				
383	20	8	2009	7	23	28.2	39.31	33.11	R	6	R					2.8	R				
384	20	8	2009	8	16	50.6	37.57	26.78	R	8	R					2.9	R				
385	20	8	2009	8	59	5.2	37.66	34.82	R	17	R					2.7	R				
386	20	8	2009	13	51	43.6	39.61	33.26	R	3	R					2.9	R				
387	20	8	2009	14	1	37.5	40.52	27.77	R	7	R					2.5	R				
388	20	8	2009	16	30	24.7	37.26	28.21	R	2	R					2.3	R				
389	20	8	2009	16	45	22.4	37.32	28.26	R	4	R					2.4	R				
390	20	8	2009	17	10	8.2	39.92	39.02	R	6	R					2.9	R				
391	20	8	2009	17	58	54.7	36.73	36.00	R	5	R					2.7	R				
392	20	8	2009	19	44	37.3	39.97	39.63	R	6	R					2.2	R				
393	20	8	2009	20	22	57.8	37.52	35.64	R	6	R					2.4	R				
394	20	8	2009	21	34	11.9	39.15	40.37	R	5	R					3.2	R				
395	20	8	2009	22	40	47.8	38.91	26.79	R	15	R					3.0	R				
396	21	8	2009	2	27	28.9	39.08	40.74	R	5	R					3.2	R				
397	21	8	2009	2	37	50.5	38.72	39.44	R	5	R					2.9	R				
398	21	8	2009	3	50	56.4	36.65	30.49	R	20	R					2.9	R				
399	21	8	2009	4	46	32.4	40.49	29.18	R	11	R					2.2	R				
400	21	8	2009	8	23	8.5	39.47	28.08	R	11	R					2.4	R				

**TÜRKİYE DEPREM ETKİNLİĞİ ( 2009 YILI AĞUSTOS AYI )**

No	Tarih - Date			Zaman - Time			Koordinat - Coordinate			Derinlik - Depth		Magnitüd - Magnitude									
	Gün	Ay	Yıl	Saat	Dak.	San.	Enlem-K	Boylam-D	Ref	Km.	Ref	Ms	Ref	Mb	Ref	Md	Ref	MI	Ref	Mw	Ref
401	21	8	2009	9	19	21.5	38.88	26.78	R	9	R					3.1	R				
402	21	8	2009	11	58	43.5	39.86	40.25	R	7	R					3.0	R				
403	21	8	2009	14	35	59.9	40.71	30.60	R	21	R					2.4	R				
404	21	8	2009	14	40	50.5	36.98	38.86	R	2	R					3.0	R				
405	21	8	2009	16	15	44.1	37.27	28.26	R	18	R					2.6	R				
406	21	8	2009	17	20	3.6	37.53	35.67	R	12	R					2.4	R				
407	21	8	2009	19	37	34.9	38.85	39.06	R	6	R					2.6	R				
408	21	8	2009	20	25	51.2	36.98	27.74	R	19	R					2.3	R				
409	21	8	2009	21	11	56.5	37.72	26.82	R	9	R					3.0	R				
410	21	8	2009	22	43	23.6	38.72	35.73	R	7	R					3.0	R				
411	22	8	2009	0	0	38.8	35.50	27.43	R	11	R					3.4	R				
412	22	8	2009	0	4	11.6	37.54	30.57	R	4	R					2.9	R				
413	22	8	2009	3	30	13.9	39.80	32.93	R	13	R					2.7	R				
414	22	8	2009	3	47	24.3	40.62	36.76	R	12	R					3.0	R				
415	22	8	2009	3	48	45.2	39.08	28.95	R	9	R					3.2	R				
416	22	8	2009	5	30	23.6	40.94	31.83	R	8	R					2.9	R				
417	22	8	2009	6	4	42.1	39.94	39.59	R	13	R					2.6	R				
418	22	8	2009	7	37	33.1	37.19	27.91	R	17	R					2.5	R				
419	22	8	2009	8	7	10.4	37.17	28.15	R	2	R					2.3	R				
420	22	8	2009	9	1	34.0	39.08	27.61	R	10	R					2.8	R				



**TÜRKİYE DEPREM ETKİNLİĞİ ( 2009 YILI AĞUSTOS AYI )**

No	Tarih - Date			Zaman - Time			Koordinat - Coordinate			Derinlik - Depth		Magnitüd - Magnitude									
	Gün	Ay	Yıl	Saat	Dak.	San.	Enlem-K	Boylam-D	Ref	Km.	Ref	Ms	Ref	Mb	Ref	Md	Ref	MI	Ref	Mw	Ref
421	22	8	2009	13	51	59.6	37.88	32.26	R	2	R					2.5	R				
422	22	8	2009	13	53	4.0	40.50	36.89	R	13	R					2.7	R				
423	22	8	2009	15	6	38.0	40.43	28.33	R	2	R					3.0	R				
424	22	8	2009	15	11	37.2	39.45	33.15	R	5	R					2.8	R				
425	22	8	2009	19	21	30.2	38.35	27.21	R	5	R					3.4	R				
426	22	8	2009	22	40	27.2	37.07	28.58	R	13	R					2.7	R				
427	23	8	2009	3	20	31.1	36.69	27.18	R	7	R					2.7	R				
428	23	8	2009	3	58	50.8	40.86	35.95	R	9	R					2.5	R				
429	23	8	2009	4	25	11.0	37.00	31.69	R	13	R					3.0	R				
430	23	8	2009	5	46	12.1	40.95	32.98	R	8	R					2.9	R				
431	23	8	2009	7	26	38.2	38.55	40.64	R	11	R					2.8	R				
432	23	8	2009	7	46	22.3	37.29	30.71	R	15	R					2.7	R				
433	23	8	2009	7	53	30.6	37.55	35.66	R	3	R					2.9	R				
434	23	8	2009	9	35	27.8	38.66	39.75	R	10	R					2.9	R				
435	23	8	2009	9	38	48.7	39.27	27.71	R	16	R					2.9	R				
436	23	8	2009	10	9	33.3	37.18	28.15	R	6	R					2.6	R				
437	23	8	2009	10	16	38.9	37.34	28.27	R	14	R					2.5	R				
438	23	8	2009	10	21	23.6	39.45	28.17	R	8	R					2.9	R				
439	23	8	2009	11	43	50.5	39.18	34.48	R	5	R					3.0	R				
440	23	8	2009	13	56	48.4	37.25	28.21	R	6	R					2.7	R				

**TÜRKİYE DEPREM ETKİNLİĞİ ( 2009 YILI AĞUSTOS AYI )**

No	Tarih - Date			Zaman - Time			Koordinat - Coordinate			Derinlik - Depth		Magnitüd - Magnitude									
	Gün	Ay	Yıl	Saat	Dak.	San.	Enlem-K	Boylam-D	Ref	Km.	Ref	Ms	Ref	Mb	Ref	Md	Ref	MI	Ref	Mw	Ref
441	23	8	2009	14	36	31.9	37.54	35.68	R	10	R					3.6	R				
442	23	8	2009	15	20	50.6	37.58	35.65	R	4	R					3.1	R				
443	23	8	2009	15	22	40.5	37.21	28.21	R	11	R					2.3	R				
444	23	8	2009	16	28	3.3	37.55	35.66	R	4	R					3.5	R				
445	23	8	2009	16	58	14.8	39.60	39.72	R	5	R					2.7	R				
446	23	8	2009	19	47	52.8	38.94	37.93	R	8	R					3.2	R				
447	23	8	2009	19	49	6.7	37.68	38.96	R	8	R					2.7	R				
448	23	8	2009	21	52	1.2	39.17	34.48	R	3	R					3.1	R				
449	23	8	2009	22	3	0.9	39.47	32.21	R	7	R					2.7	R				
450	23	8	2009	22	53	0.4	38.78	39.49	R	18	R					2.6	R				
451	24	8	2009	1	14	32.8	35.94	27.56	R	5	R					3.3	R				
452	24	8	2009	1	33	41.2	39.83	33.74	R	5	R					3.2	R				
453	24	8	2009	1	45	38.3	37.36	27.06	R	19	R					2.2	R				
454	24	8	2009	4	28	43.0	35.86	26.06	R	67	R					4.0	R				
455	24	8	2009	7	21	39.4	40.54	27.39	R	22	R					2.4	R				
456	24	8	2009	9	27	23.9	39.97	33.56	R	5	R					2.9	R				
457	24	8	2009	9	33	11.2	37.21	28.19	R	7	R					2.6	R				
458	24	8	2009	10	56	53.2	39.55	26.04	R	12	R					3.1	R				
459	24	8	2009	13	0	13.4	41.31	43.25	R	11	R					3.2	R				
460	24	8	2009	13	1	26.8	37.96	37.99	R	6	R					2.6	R				

**TÜRKİYE DEPREM ETKİNLİĞİ ( 2009 YILI AĞUSTOS AYI )**

No	Tarih - Date			Zaman - Time			Koordinat - Coordinate			Derinlik - Depth		Magnitüd - Magnitude									
	Gün	Ay	Yıl	Saat	Dak.	San.	Enlem-K	Boylam-D	Ref	Km.	Ref	Ms	Ref	Mb	Ref	Md	Ref	MI	Ref	Mw	Ref
461	24	8	2009	13	52	45.4	40.20	29.94	R	17	R					2.6	R				
462	24	8	2009	14	4	42.3	37.25	28.19	R	7	R					2.6	R				
463	24	8	2009	14	17	41.0	37.63	34.74	R	8	R					2.5	R				
464	24	8	2009	14	51	17.1	38.77	34.97	R	16	R					2.9	R				
465	24	8	2009	15	18	6.5	39.28	27.80	R	3	R					2.7	R				
466	24	8	2009	15	36	40.1	39.50	29.08	R	4	R					3.1	R				
467	24	8	2009	15	43	12.7	39.60	28.83	R	18	R					2.5	R				
468	24	8	2009	15	57	9.0	37.57	35.35	R	8	R					2.9	R				
469	24	8	2009	16	3	34.6	37.33	28.20	R	5	R					2.4	R				
470	24	8	2009	17	28	18.3	38.88	26.04	R	16	R					3.6	R				
471	24	8	2009	19	28	32.1	38.05	26.92	R	13	R					3.0	R				
472	24	8	2009	19	47	59.8	39.17	34.50	R	5	R					3.3	R				
473	24	8	2009	20	14	41.9	38.94	37.90	R	7	R					2.7	R				
474	24	8	2009	21	18	29.7	37.84	27.61	R	8	R					3.0	R				
475	24	8	2009	22	25	55.6	37.55	35.65	R	8	R					2.7	R				
476	24	8	2009	22	26	9.7	34.99	25.81	R	74	R							3.8	R		
477	25	8	2009	1	53	58.1	40.84	33.57	R	12	R					2.9	R				
478	25	8	2009	2	7	28.0	38.03	31.97	R	5	R					2.6	R				
479	25	8	2009	2	45	57.2	38.11	27.83	R	20	R					2.5	R				
480	25	8	2009	3	47	42.1	39.12	34.48	R	5	R					2.9	R				

**TÜRKİYE DEPREM ETKİNLİĞİ ( 2009 YILI AĞUSTOS AYI )**

No	Tarih - Date			Zaman - Time			Koordinat - Coordinate			Derinlik - Depth		Magnitüd - Magnitude									
	Gün	Ay	Yıl	Saat	Dak.	San.	Enlem-K	Boylam-D	Ref	Km.	Ref	Ms	Ref	Mb	Ref	Md	Ref	MI	Ref	Mw	Ref
481	25	8	2009	3	58	10.8	41.69	32.52	R	6	R					2.6	R				
482	25	8	2009	4	55	48.0	38.48	40.62	R	6	R					2.7	R				
483	25	8	2009	5	34	55.8	40.70	27.55	R	7	R					3.1	R				
484	25	8	2009	6	28	35.2	34.72	32.99	N	10	N			4.6	N			4.7	R		
485	25	8	2009	7	35	41.6	37.56	35.68	R	4	R					3.6	R				
486	25	8	2009	8	18	6.7	37.22	35.98	R	8	R					2.7	R				
487	25	8	2009	8	46	49.9	37.86	29.10	R	5	R					2.5	R				
488	25	8	2009	10	18	8.6	37.26	28.20	R	7	R					2.6	R				
489	25	8	2009	10	36	18.1	40.15	30.01	R	14	R					2.6	R				
490	25	8	2009	11	12	30.3	43.30	46.05	N	13	N			4.1	N						
491	25	8	2009	12	13	30.0	37.16	29.02	R	8	R					2.7	R				
492	25	8	2009	12	18	19.1	38.74	33.64	R	5	R					2.8	R				
493	25	8	2009	12	18	42.3	37.12	29.01	R	9	R					2.7	R				
494	25	8	2009	13	43	12.7	40.51	27.64	R	15	R					2.5	R				
495	25	8	2009	14	23	24.9	37.24	28.19	R	4	R					2.5	R				
496	25	8	2009	14	24	2.9	37.19	44.06	R	3	R					2.9	R	3.1	R		
497	25	8	2009	14	26	6.7	37.23	28.17	R	5	R					2.7	R				
498	25	8	2009	15	18	29.8	41.04	34.50	R	5	R					2.8	R				
499	25	8	2009	17	38	50.7	40.46	29.16	R	11	R					2.1	R				
500	25	8	2009	17	50	21.9	40.05	40.79	R	5	R					3.5	R				

**TÜRKİYE DEPREM ETKİNLİĞİ ( 2009 YILI AĞUSTOS AYI )**

No	Tarih - Date			Zaman - Time			Koordinat - Coordinate			Derinlik - Depth		Magnitüd - Magnitude									
	Gün	Ay	Yıl	Saat	Dak.	San.	Enlem-K	Boylam-D	Ref	Km.	Ref	Ms	Ref	Mb	Ref	Md	Ref	MI	Ref	Mw	Ref
501	25	8	2009	18	49	54.0	38.94	42.91	R	6	R					2.8	R				
502	25	8	2009	19	9	48.7	38.93	38.99	R	6	R					2.9	R				
503	25	8	2009	19	45	0.1	34.65	33.08	R	16	R					2.8	R				
504	25	8	2009	19	48	57.5	37.51	36.33	R	10	R					2.8	R				
505	25	8	2009	20	38	1.5	37.04	28.54	R	8	R					3.3	R				
506	25	8	2009	22	17	2.8	38.95	39.01	R	5	R					3.3	R				
507	25	8	2009	22	48	28.7	37.23	36.03	R	21	R					2.6	R				
508	25	8	2009	23	28	3.7	37.14	27.87	R	7	R					2.7	R				
509	25	8	2009	23	47	45.6	34.64	32.99	R	17	R					2.7	R				
510	26	8	2009	0	16	18.7	36.26	28.94	R	21	R					2.9	R				
511	26	8	2009	2	59	41.1	34.00	25.52	N	10	N			4.4	N						
512	26	8	2009	5	26	15.2	34.57	33.06	R	13	R					3.0	R				
513	26	8	2009	5	42	31.8	39.18	34.40	R	10	R					2.8	R				
514	26	8	2009	6	54	54.5	39.01	41.17	R	5	R					2.9	R				
515	26	8	2009	7	17	38.6	38.49	44.02	R	5	R					3.3	R				
516	26	8	2009	7	57	37.6	39.20	34.53	R	5	R					2.9	R				
517	26	8	2009	9	1	3.6	36.98	29.18	R	5	R					2.5	R				
518	26	8	2009	9	4	58.4	35.22	33.73	R	5	R					2.6	R				
519	26	8	2009	10	16	40.4	37.31	28.25	R	4	R					2.5	R				
520	26	8	2009	12	10	5.3	40.03	37.85	R	8	R					3.1	R				

**TÜRKİYE DEPREM ETKİNLİĞİ ( 2009 YILI AĞUSTOS AYI )**

No	Tarih - Date			Zaman - Time			Koordinat - Coordinate			Derinlik - Depth		Magnitüd - Magnitude									
	Gün	Ay	Yıl	Saat	Dak.	San.	Enlem-K	Boylam-D	Ref	Km.	Ref	Ms	Ref	Mb	Ref	Md	Ref	MI	Ref	Mw	Ref
521	26	8	2009	12	53	43.3	39.11	26.37	R	2	R					3.1	R				
522	26	8	2009	14	26	38.2	35.35	28.57	N	41	N			4.5	N			4.3	R		
523	26	8	2009	14	26	53.7	39.25	34.48	R	5	R					2.7	R				
524	26	8	2009	15	5	58.9	37.48	35.40	R	5	R					2.6	R				
525	26	8	2009	15	14	30.2	38.82	35.60	R	16	R					2.8	R				
526	26	8	2009	15	20	31.8	39.07	29.05	R	8	R					2.8	R				
527	26	8	2009	15	48	26.9	37.71	35.67	R	8	R					2.7	R				
528	26	8	2009	15	55	53.8	37.11	37.02	R	6	R					3.3	R				
529	26	8	2009	16	2	20.2	37.26	28.19	R	5	R					2.6	R				
530	26	8	2009	17	12	33.5	39.10	32.83	R	5	R					3.0	R				
531	26	8	2009	18	23	44.5	34.93	34.02	R	56	R					2.4	R				
532	26	8	2009	18	52	49.1	34.62	33.00	R	6	R					2.7	R				
533	26	8	2009	19	23	22.2	36.54	27.67	R	5	R					2.5	R				
534	26	8	2009	19	27	24.8	38.47	39.25	R	8	R					3.3	R				
535	26	8	2009	19	37	53.5	38.46	39.27	R	8	R					2.9	R				
536	26	8	2009	19	44	43.2	39.15	34.47	R	3	R					3.3	R				
537	26	8	2009	20	18	4.6	39.08	32.87	R	6	R					2.8	R				
538	26	8	2009	20	28	46.9	40.14	36.19	R	8	R					3.0	R				
539	26	8	2009	21	6	27.7	38.33	26.62	R	5	R					2.9	R				
540	26	8	2009	22	56	33.3	37.69	36.20	R	4	R					3.5	R				

**TÜRKİYE DEPREM ETKİNLİĞİ ( 2009 YILI AĞUSTOS AYI )**

No	Tarih - Date			Zaman - Time			Koordinat - Coordinate			Derinlik - Depth		Magnitüd - Magnitude									
	Gün	Ay	Yıl	Saat	Dak.	San.	Enlem-K	Boylam-D	Ref	Km.	Ref	Ms	Ref	Mb	Ref	Md	Ref	MI	Ref	Mw	Ref
541	26	8	2009	23	44	33.8	37.11	42.75	R	16	R					2.8	R				
542	26	8	2009	23	59	30.1	37.93	32.02	R	7	R					2.7	R				
543	27	8	2009	2	56	39.5	37.20	30.85	R	89	R					3.4	R	3.3	R		
544	27	8	2009	3	19	9.8	36.78	27.43	R	5	R					2.6	R				
545	27	8	2009	3	34	4.3	37.92	29.13	R	3	R					2.8	R				
546	27	8	2009	3	45	10.1	36.97	27.81	R	24	R					2.3	R				
547	27	8	2009	4	28	11.0	37.56	38.68	R	19	R					2.8	R				
548	27	8	2009	5	41	15.4	40.25	27.11	R	15	R							3.5	R		
549	27	8	2009	6	0	22.4	38.96	26.73	R	10	R					3.2	R				
550	27	8	2009	8	30	8.2	37.32	28.24	R	7	R					2.6	R				
551	27	8	2009	8	38	11.4	39.92	40.53	R	5	R					3.3	R				
552	27	8	2009	9	0	30.5	39.09	27.44	R	15	R					2.8	R				
553	27	8	2009	10	19	5.2	37.23	28.17	R	3	R					2.6	R				
554	27	8	2009	13	43	45.9	39.97	38.83	R	16	R					3.0	R				
555	27	8	2009	14	11	48.0	34.01	25.74	R	32	R							3.9	R		
556	27	8	2009	14	34	18.7	40.04	29.99	R	9	R					2.7	R				
557	27	8	2009	14	39	58.0	36.46	28.66	R	5	R					3.0	R				
558	27	8	2009	14	55	53.7	37.27	28.19	R	8	R					2.5	R				
559	27	8	2009	14	58	12.6	39.96	35.55	R	5	R					2.5	R				
560	27	8	2009	15	37	49.1	34.93	26.87	R	59	R							3.4	R		

**TÜRKİYE DEPREM ETKİNLİĞİ ( 2009 YILI AĞUSTOS AYI )**

No	Tarih - Date			Zaman - Time			Koordinat - Coordinate			Derinlik - Depth		Magnitüd - Magnitude									
	Gün	Ay	Yıl	Saat	Dak.	San.	Enlem-K	Boylam-D	Ref	Km.	Ref	Ms	Ref	Mb	Ref	Md	Ref	MI	Ref	Mw	Ref
561	27	8	2009	15	53	55.4	37.27	28.26	R	13	R					2.3	R				
562	27	8	2009	15	57	49.2	40.50	29.14	R	5	R					1.9	R				
563	27	8	2009	16	37	21.6	40.67	29.28	R	10	R					3.0	R				
564	27	8	2009	17	17	15.4	38.63	26.62	R	8	R					3.1	R				
565	27	8	2009	20	37	35.0	37.48	42.61	R	3	R					3.4	R				
566	27	8	2009	21	0	47.8	39.17	34.50	R	5	R					3.0	R				
567	27	8	2009	21	43	49.8	39.19	34.50	R	5	R					3.2	R				
568	27	8	2009	22	2	7.1	38.67	31.22	R	2	R					3.3	R				
569	27	8	2009	23	26	22.2	34.88	26.65	R	58	R							3.3	R		
570	27	8	2009	23	37	54.4	39.22	34.39	R	9	R					2.7	R				
571	28	8	2009	0	26	59.4	34.63	32.99	R	23	R					2.9	R				
572	28	8	2009	1	23	39.0	39.55	38.64	R	13	R					2.8	R				
573	28	8	2009	1	44	6.1	34.61	33.02	R	16	R					2.7	R				
574	28	8	2009	1	50	11.0	39.24	29.02	R	8	R					2.9	R				
575	28	8	2009	2	48	36.3	34.66	33.03	R	18	R							3.3	R		
576	28	8	2009	4	39	33.7	34.83	26.98	R	44	R							3.6	R		
577	28	8	2009	4	55	4.3	36.82	34.36	R	7	R					2.6	R				
578	28	8	2009	6	31	37.2	38.62	26.83	R	23	R					3.5	R				
579	28	8	2009	6	51	32.8	38.68	26.97	R	2	R					2.8	R				
580	28	8	2009	7	4	38.3	40.43	28.95	R	8	R					2.2	R				



**TÜRKİYE DEPREM ETKİNLİĞİ ( 2009 YILI AĞUSTOS AYI )**

No	Tarih - Date			Zaman - Time			Koordinat - Coordinate			Derinlik - Depth		Magnitüd - Magnitude									
	Gün	Ay	Yıl	Saat	Dak.	San.	Enlem-K	Boylam-D	Ref	Km.	Ref	Ms	Ref	Mb	Ref	Md	Ref	MI	Ref	Mw	Ref
581	28	8	2009	8	24	54.6	35.10	26.85	R	29	R					3.9	R				
582	28	8	2009	9	50	3.0	37.49	35.67	R	9	R					3.3	R				
583	28	8	2009	10	19	29.8	40.58	35.09	R	5	R					2.6	R				
584	28	8	2009	11	16	25.8	38.87	30.33	R	15	R					2.7	R				
585	28	8	2009	11	23	11.2	37.73	26.81	R	19	R					2.9	R				
586	28	8	2009	14	20	49.6	40.52	31.04	R	4	R					2.8	R				
587	28	8	2009	15	4	33.5	37.72	37.28	R	11	R					2.9	R				
588	28	8	2009	16	7	9.8	40.72	42.53	R	5	R					3.1	R				
589	28	8	2009	17	30	34.0	40.79	31.48	R	10	R					2.9	R				
590	28	8	2009	20	7	27.4	40.47	29.16	R	7	R					2.8	R				
591	28	8	2009	21	52	14.4	37.93	29.14	R	13	R					2.9	R				
592	28	8	2009	23	33	40.6	36.89	35.44	R	8	R					2.8	R				
593	29	8	2009	2	28	10.8	37.55	35.52	R	16	R					2.6	R				
594	29	8	2009	3	34	20.9	37.92	29.16	R	19	R					2.8	R				
595	29	8	2009	5	34	54.6	40.54	35.35	R	9	R					2.7	R				
596	29	8	2009	8	29	12.8	37.24	28.19	R	2	R					2.4	R				
597	29	8	2009	8	42	4.0	37.30	28.24	R	4	R					2.4	R				
598	29	8	2009	13	46	19.8	37.26	28.22	R	9	R					2.5	R				
599	29	8	2009	18	5	0.2	38.11	38.42	R	2	R					3.1	R				
600	29	8	2009	19	6	28.7	37.60	35.68	R	8	R					2.6	R				

**TÜRKİYE DEPREM ETKİNLİĞİ ( 2009 YILI AĞUSTOS AYI )**

No	Tarih - Date			Zaman - Time			Koordinat - Coordinate			Derinlik - Depth		Magnitüd - Magnitude									
	Gün	Ay	Yıl	Saat	Dak.	San.	Enlem-K	Boylam-D	Ref	Km.	Ref	Ms	Ref	Mb	Ref	Md	Ref	MI	Ref	Mw	Ref
601	29	8	2009	21	7	46.8	39.94	27.35	R	5	R					2.6	R				
602	29	8	2009	21	26	43.7	36.89	35.14	R	16	R					2.8	R				
603	29	8	2009	21	32	39.3	40.25	27.09	R	9	R					2.7	R				
604	29	8	2009	22	1	39.3	39.82	39.09	R	6	R					2.9	R				
605	30	8	2009	0	18	25.6	38.51	39.14	R	9	R					2.9	R				
606	30	8	2009	0	42	24.7	38.48	26.29	R	14	R							4.2	R		
607	30	8	2009	3	26	21.3	38.86	41.23	R	9	R					2.9	R				
608	30	8	2009	4	19	9.5	36.13	27.14	R	18	R					3.2	R				
609	30	8	2009	7	17	36.1	38.42	26.50	R	13	R					2.9	R				
610	30	8	2009	8	1	41.2	38.98	27.30	R	13	R					2.9	R				
611	30	8	2009	8	6	9.3	38.42	27.09	R	4	R					2.9	R				
612	30	8	2009	8	47	22.3	38.33	26.59	R	2	R					3.0	R				
613	30	8	2009	9	4	5.0	38.16	26.70	R	9	R					2.9	R				
614	30	8	2009	11	51	42.5	37.75	29.20	R	18	R					2.7	R				
615	30	8	2009	12	27	51.7	39.04	27.42	R	5	R					2.7	R				
616	30	8	2009	13	30	5.0	37.91	27.38	R	2	R					2.7	R				
617	30	8	2009	14	4	36.3	33.18	46.42	N	15	N			4.8	N						
618	30	8	2009	15	45	38.8	40.20	29.05	R	5	R					2.8	R				
619	30	8	2009	19	4	14.8	37.06	28.83	R	25	R					2.8	R				
620	30	8	2009	21	40	42.6	39.47	27.88	R	8	R					2.7	R				

**TÜRKİYE DEPREM ETKİNLİĞİ ( 2009 YILI AĞUSTOS AYI )**

No	Tarih - Date			Zaman - Time			Koordinat - Coordinate			Derinlik - Depth		Magnitüd - Magnitude									
	Gün	Ay	Yıl	Saat	Dak.	San.	Enlem-K	Boylam-D	Ref	Km.	Ref	Ms	Ref	Mb	Ref	Md	Ref	MI	Ref	Mw	Ref
621	30	8	2009	21	56	12.8	36.18	30.82	R	11	R					3.7	R				
622	30	8	2009	22	46	11.4	36.39	27.06	R	14	R					3.3	R				
623	30	8	2009	22	57	32.4	38.56	44.28	R	5	R					3.3	R				
624	30	8	2009	23	7	16.1	40.70	27.52	R	13	R					2.5	R				
625	31	8	2009	1	25	40.0	37.37	26.98	R	11	R					2.7	R				
626	31	8	2009	1	48	22.5	38.91	28.15	R	9	R					2.9	R				
627	31	8	2009	2	26	38.3	41.67	32.56	R	7	R					2.7	R				
628	31	8	2009	2	48	42.8	39.05	27.70	R	2	R					3.4	R				
629	31	8	2009	3	55	50.1	37.88	27.48	R	4	R					2.8	R				
630	31	8	2009	3	59	37.7	37.90	27.57	R	11	R					2.8	R				
631	31	8	2009	4	25	9.9	39.82	27.85	R	15	R					2.2	R				
632	31	8	2009	11	24	58.3	40.65	28.95	R	11	R					2.5	R				
633	31	8	2009	14	11	22.9	41.20	36.39	R	5	R					2.7	R				
634	31	8	2009	14	16	37.5	37.48	35.60	R	17	R					3.2	R				
635	31	8	2009	14	39	29.9	37.57	35.66	R	3	R					2.4	R				
636	31	8	2009	14	45	10.1	37.56	35.65	R	8	R					2.3	R				
637	31	8	2009	16	11	24.2	40.36	27.83	R	10	R					2.3	R				
638	31	8	2009	19	12	34.0	38.02	42.55	R	8	R							3.9	R		
639	31	8	2009	19	43	52.9	39.04	27.68	R	11	R					3.4	R				
640	31	8	2009	21	45	39.4	37.54	26.82	R	5	R					2.6	R				

**TÜRKİYE DEPREM ETKİNLİĞİ ( 2009 YILI AĞUSTOS AYI )**

No	Tarih - Date			Zaman - Time			Koordinat - Coordinate			Derinlik - Depth		Magnitüd - Magnitude									
	Gün	Ay	Yıl	Saat	Dak.	San.	Enlem-K	Boylam-D	Ref	Km.	Ref	Ms	Ref	Mb	Ref	Md	Ref	MI	Ref	Mw	Ref
641	31	8	2009	21	49	54.1	38.67	26.35	R	18	R							<b>4.0</b>	R		
642	31	8	2009	21	55	30.6	38.75	26.42	R	10	R					<b>3.7</b>	R	<b>3.5</b>	R		
643	31	8	2009	21	58	50.0	38.76	26.42	R	24	R					<b>2.9</b>	R				
644	31	8	2009	22	5	20.2	38.78	26.48	R	8	R					<b>3.4</b>	R				
645	31	8	2009	22	11	31.1	38.82	26.38	R	21	R					<b>2.9</b>	R				
646	31	8	2009	22	25	14.3	38.82	26.51	R	16	R					<b>2.8</b>	R				
647	31	8	2009	22	52	29.9	38.25	26.67	R	7	R					<b>3.4</b>	R				
648	31	8	2009	23	3	39.5	39.58	40.98	R	5	R					<b>3.1</b>	R				