



Kandilli Rasathanesi Ve Deprem Araştırma Enstitüsü

ULUSAL DEPREM İZLEME MERKEZİ



*2007 NİSAN AYI
BÜLTENİ*

*YIL: 4 - SAYI: 40
İSTANBUL*

Hazırlayan ve Katkıda Bulunanlar

D. Kalafat

K. Kekovalı

K. Kılıç

Y. Güneş

M. Yilmazer

Z. Öğütçü

M. Kara

M. Suvarıklı

A. Küsmezer

F. Kılıçer Bekler

P. Deniz

A. Berberoğlu

M. Berberoğlu

A. Güngör

H. Gümüş

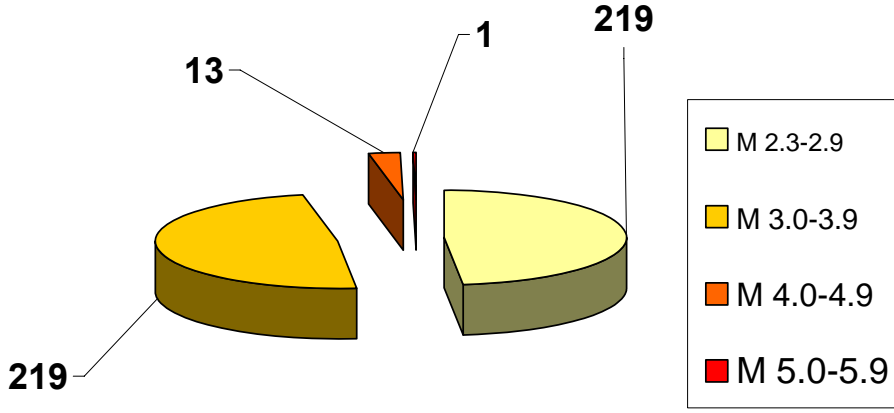
M. Çomoğlu

S. Altuncu

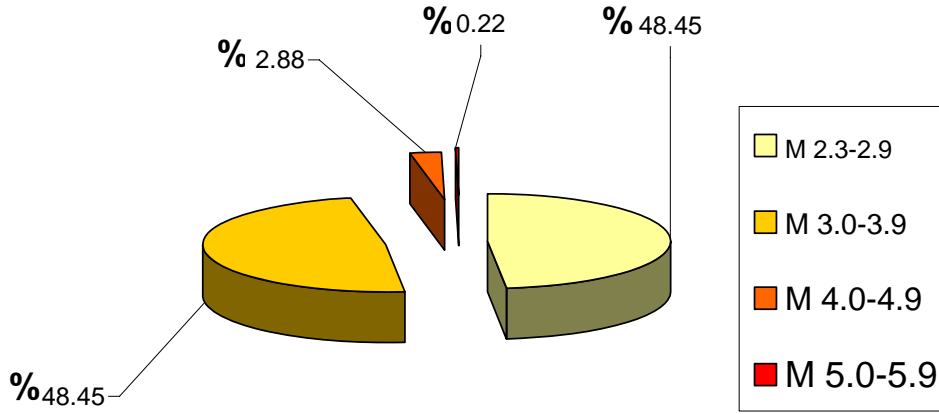
2007 yılı NİSAN ayında meydana gelen depremlerin
istatistiksel dağılımı

MAGNİTÜD ARALIĞI	TOPLAM
2.3-2.9	219
3.0-3.9	219
4.0-4.9	13
5.0-5.9	1
6.0-6.9	-
7.0-	-
TOPLAM	452

2007 NİSAN AYI DEPREMLERİNİN İSTATİSTİKSEL DAĞILIMI
(Toplam: 452 Adet)



2007 NİSAN AYI DEPREMLERİNİN İSTATİSTİKSEL DAĞILIMI (%)



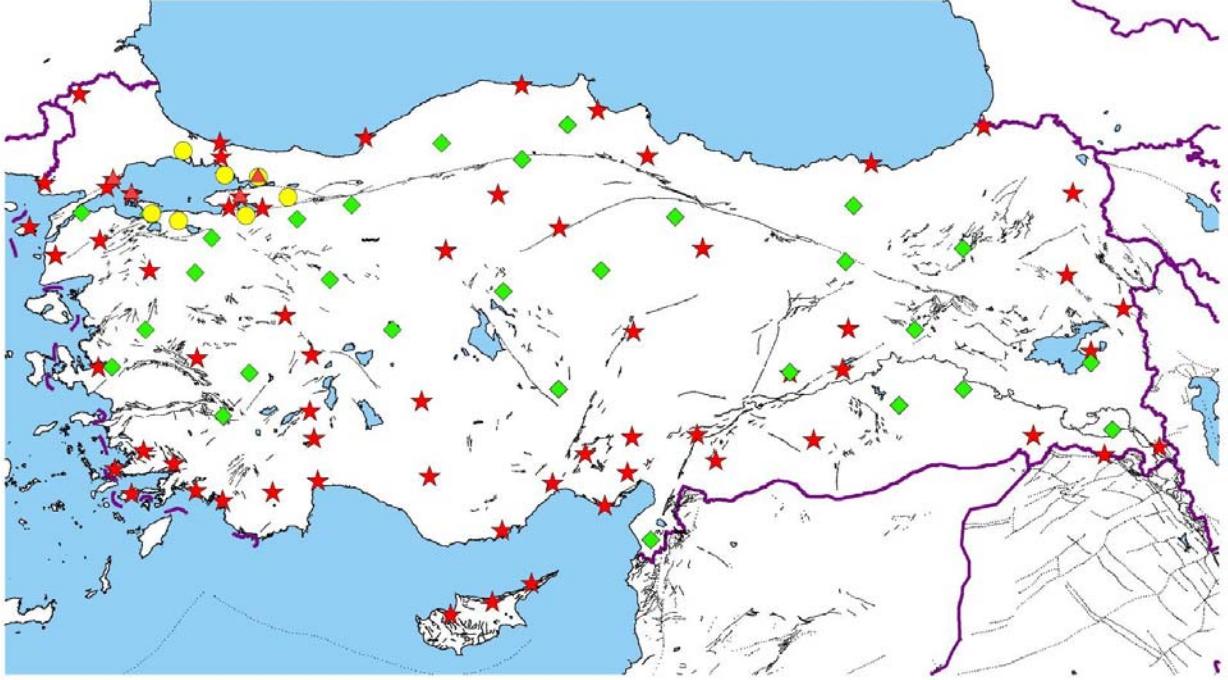
NİSAN 2007

İSTASYON VERİMLİLİK

TABLOLARI

B.Ü.
KANDİLLİ RASATHANESİ VE DEPREM ARAŞTIRMA ENSTİTÜSÜ
ULUSAL DEPREM İZLEME MERKEZİ
DEPREM İSTASYONLARI

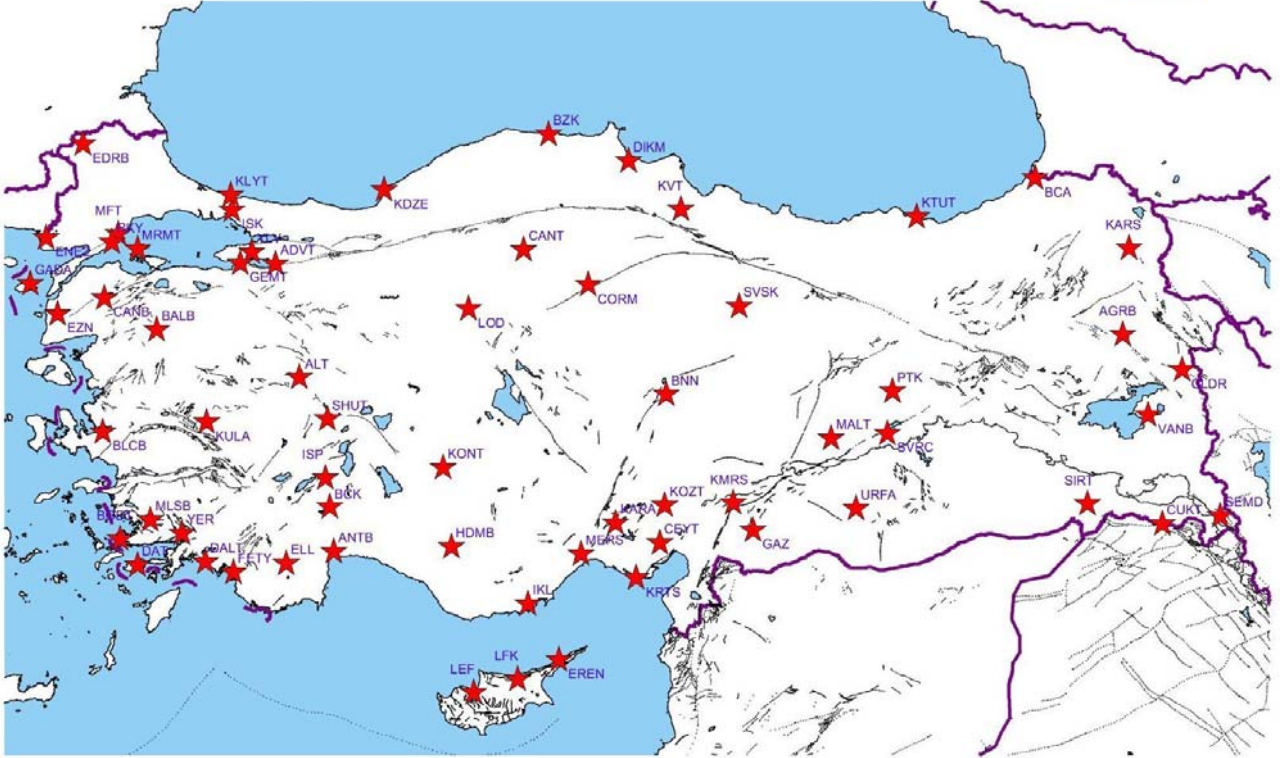
Nisan 2007
Toplam: 100 Adet



★ BROAD BAND ◆ ONLINE ● TELEMETRİ ▲ NANOMETRICS

BROAD BAND DEPREM İSTASYONLARI

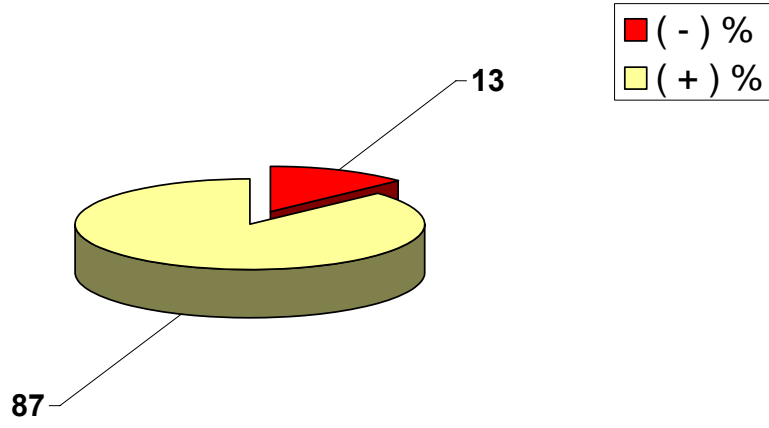
Nisan 2007
63 Adet



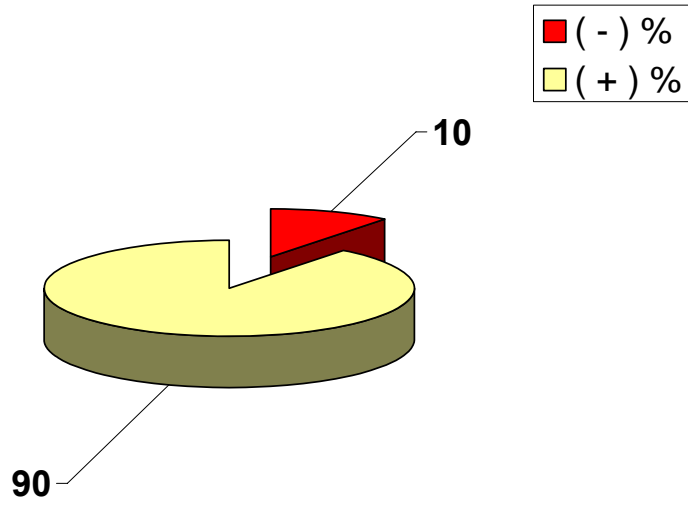
Adet	Yöntem	Kod	(+)adet	(-)adet	TOPLAM GÜN	(+)%	(-)%	(+)%	(-)%
1	1	ADVT	29	1	30	97	3		
2	2	AGRB	30	0	30	100	0		
3	3	ALT	30	0	30	100	0		
4	4	ANTB	30	0	30	100	0		
5	5	BALB	22	8	30	73	27		
6	6	BCA	30	0	30	100	0		
7	7	BCK	30	0	30	100	0		
8	8	BLCB	30	0	30	100	0		
9	9	BNN	30	0	30	100	0		
10	10	BODT	27	3	30	90	10		
11	11	BZK	30	0	30	100	0		
12	12	CANB	0	30	30	0	100		
13	13	CANT	30	0	30	100	0		
14	14	CEYT	29	1	30	97	3		
15	15	CLDR	19	11	30	63	37		
16	16	CORM	29	1	30	97	3		
17	17	CUKT	13	17	30	43	57		
18	18	DALT	4	26	30	13	87		
19	19	DAT	30	0	30	100	0		
20	20	DIKM	30	0	30	100	0		
21	21	EDRB	13	17	30	43	57		
22	22	ELL	29	1	30	97	3		
23	23	ENEZ	30	0	30	100	0		
24	24	EREN	28	2	30	93	7		
25	25	EZN	30	0	30	100	0		
26	26	FTYB	26	4	30	87	13		
27	27	GADA	30	0	30	100	0		
28	28	GAZ	30	0	30	100	0		
29	29	GEMT	30	0	30	100	0		
30	30	HDMB	0	30	30	0	100		
31	31	IKL	30	0	30	100	0		
32	32	ISK	28	2	30	93	7	87	13
33	33	ISP	30	0	30	100	0		
34	34	KARA	30	0	30	100	0		
35	35	KARS	28	2	30	93	7		
36	36	KDZE	30	0	30	100	0		
37	37	KLYT	29	1	30	97	3		
38	38	KMRS	26	4	30	87	13		
39	39	KONT	30	0	30	100	0		
40	40	KOZT	29	1	30	97	3		
41	41	KRTS	25	5	30	83	17		
42	42	KTUT	30	0	30	100	0		
43	43	KULA	30	0	30	100	0		
44	44	KVT	30	0	30	100	0		
45	45	LOD	30	0	30	100	0		
46	46	LEF	30	0	30	100	0		
47	47	LFK	28	2	30	93	7		
48	48	MALT	30	0	30	100	0		
49	49	MERS	30	0	30	100	0		
50	50	MFTX	30	0	30	100	0		
51	51	MLSB	30	0	30	100	0		
52	52	MRMX	30	0	30	100	0		
53	53	PTK	3	27	30	10	90		
54	54	RKY	28	2	30	93	7		
55	55	SEMD	0	30	30	0	100		
56	56	SHUT	30	0	30	100	0		
57	57	SIRT	25	5	30	83	17		
58	58	SVRC	3	0	3	100	0		
59	59	SVSK	23	7	30	77	23		
60	60	URFA	29	1	30	97	3		
61	61	VANB	30	0	30	100	0		
62	62	YER	27	3	30	90	10		
63	63	YLVX	30	0	30	100	0		

64	1	KISA PERİYOT (SHORT PERIOD) İSTASYONLAR	AKS	30	0	30	100	0	90	10
65	2		BADT	19	11	30	63	37		
66	3		BINT	29	1	30	97	3		
67	4		BNT	30	0	30	100	0		
68	5		BTMT	30	0	30	100	0		
69	6		BYBT	30	0	30	100	0		
70	7		CTT	30	0	30	100	0		
71	8		DENT	30	0	30	100	0		
72	9		DIY	28	2	30	93	7		
73	10		DST	30	0	30	100	0		
74	11		EDC	26	4	30	87	13		
75	12		ESKT	30	0	30	100	0		
76	13		EYL	27	3	30	90	10		
77	14		EZC	30	0	30	100	0		
78	15		EZM	30	0	30	100	0		
79	16		GPA	29	1	30	97	3		
80	17		GUMT	30	0	30	100	0		
81	18		HKR	30	0	30	100	0		
82	19		HRT	29	1	30	97	3		
83	20		HRTX	30	0	30	100	0		
84	21		HTY	30	0	30	100	0		
85	22		IZI	30	0	30	100	0		
86	23		IZM	0	30	30	0	100		
87	24		KAMT	30	0	30	100	0		
88	25		KCT	29	1	30	97	3		
89	26		KHL	30	0	30	100	0		
90	27		KIZT	30	0	30	100	0		
91	28		LAP	29	1	30	97	3		
92	29		MDU	0	30	30	0	100		
93	30		MYA	30	0	30	100	0		
94	31		NIG	30	0	30	100	0		
95	32		ORLT	0	30	30	0	100		
96	33		SAFT	30	0	30	100	0		
97	34		TOKT	30	0	30	100	0		
98	35		TOS	30	0	30	100	0		
99	36		VANT	29	1	30	97	3		
100	37		YOZ	30	0	30	100	0		
							+	(-)		
2007 NİSAN ORTALAMA %							88	12		

2007 NİSAN AYI BROAD-BAND İSTASYONLARI VERİMLİLİK GRAFİĞİ

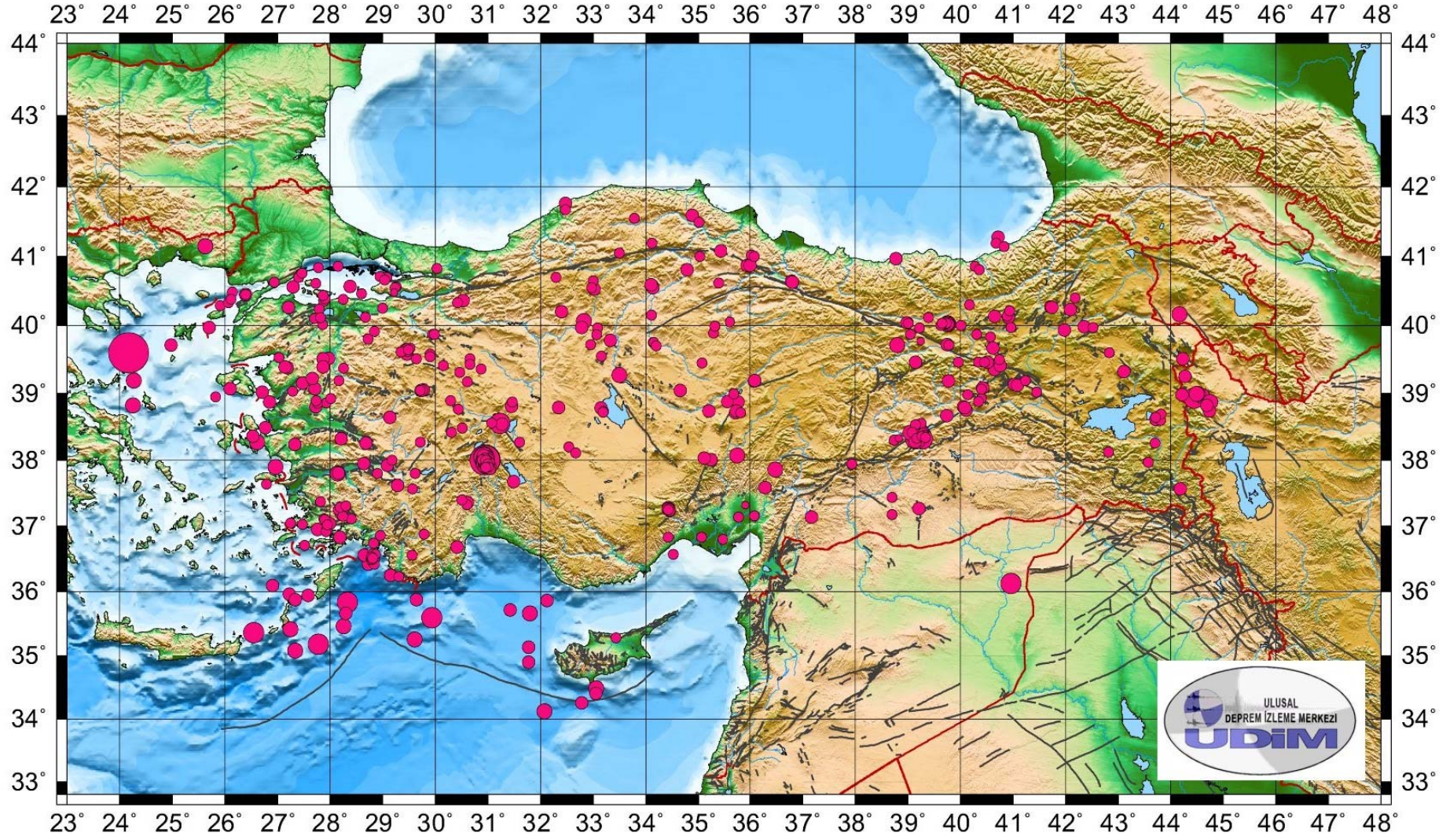


2007 NİSAN AYI SHORT PERIOD İSTASYONLARI VERİMLİLİK GRAFİĞİ



TÜRKİYE VE YAKIN ÇEVRESİ DEPREM ETKİNLİĞİ (NİSAN 2007)

Toplam: 452 Adet



TÜRKİYE DEPREM ETKİNLİĞİ (2007 YILI NİSAN AYI)

No	Tarih - Date			Zaman - Time			Koordinat - Coordinate			Derinlik - Depth		Magnitüd - Magnitude									
	Gün	Ay	Yıl	Saat	Dak.	San.	Enlem-K	Boylam-D	Ref	Km.	Ref	Ms	Ref	Mb	Ref	Md	Ref	MI	Ref	Mw	Ref
1	1	4	2007	3	35	40.9	37.62	29.28	R	6	R					3.3	R				
2	1	4	2007	3	39	11.8	40.12	40.91	R	12	R					3.2	R				
3	1	4	2007	4	2	49.0	40.14	40.89	R	7	R					2.5	R				
4	1	4	2007	5	33	1.9	38.01	30.94	R	5	R					3.4	R	3.4	R		
5	1	4	2007	6	7	47.3	39.04	34.65	R	6	R					3.0	R				
6	1	4	2007	6	9	32.4	37.86	31.05	R	9	R					2.7	R				
7	1	4	2007	6	54	35.0	37.92	30.95	R	6	R					3.0	R				
8	1	4	2007	6	56	5.0	37.93	30.95	R	8	R					2.7	R				
9	1	4	2007	7	38	37.7	38.01	30.92	R	8	R							3.7	R		
10	1	4	2007	7	40	18.6	37.90	31.00	R	18	R					3.0	R				
11	1	4	2007	7	51	9.7	37.95	30.98	R	14	R					3.0	R				
12	1	4	2007	8	25	0.4	39.13	41.03	R	5	R					3.2	R				
13	1	4	2007	8	33	34.0	37.98	30.93	R	9	R					3.0	R				
14	1	4	2007	8	51	23.2	37.97	30.92	R	2	R					3.1	R				
15	1	4	2007	9	3	3.7	38.03	30.94	R	12	R					2.7	R				
16	1	4	2007	9	44	45.1	37.96	30.93	R	8	R					3.0	R				
17	1	4	2007	9	47	10.3	37.97	30.99	R	8	R					2.9	R				
18	1	4	2007	10	34	42.5	37.98	30.94	R	2	R					3.1	R				
19	1	4	2007	11	51	38.1	40.86	40.28	R	7	R					2.8	R				
20	1	4	2007	11	57	43.0	40.21	40.94	R	5	R							2.7	R		

TÜRKİYE DEPREM ETKİNLİĞİ (2007 YILI NİSAN AYI)

No	Tarih - Date			Zaman - Time			Koordinat - Coordinate			Derinlik - Depth		Magnitüd - Magnitude									
	Gün	Ay	Yıl	Saat	Dak.	San.	Enlem-K	Boylam-D	Ref	Km.	Ref	Ms	Ref	Mb	Ref	Md	Ref	MI	Ref	Mw	Ref
21	1	4	2007	12	31	0.1	38.00	30.94	R	11	R							2.8	R		
22	1	4	2007	12	56	38.9	37.93	30.95	R	10	R					3.2	R				
23	1	4	2007	13	42	26.3	38.01	35.24	R	2	R					3.2	R				
24	1	4	2007	13	44	26.9	37.96	31.03	R	9	R					2.7	R				
25	1	4	2007	13	55	17.4	37.95	30.93	R	7	R					2.7	R	2.8	R		
26	1	4	2007	17	6	52.8	37.97	30.96	R	5	R					3.0	R				
27	1	4	2007	21	10	2.6	39.38	27.18	R	10	R					3.0	R				
28	1	4	2007	23	59	24.4	37.91	31.03	R	5	R					3.0	R				
29	2	4	2007	2	37	58.0	38.00	30.95	R	5	R					3.4	R				
30	2	4	2007	3	19	12.6	37.94	30.89	R	5	R					3.1	R				
31	2	4	2007	5	19	8.0	40.12	28.67	R	5	R					2.8	R				
32	2	4	2007	6	2	26.1	38.76	30.44	R	5	R					2.5	R				
33	2	4	2007	12	38	55.5	36.42	28.73	R	23	R					3.4	R	3.5	R		
34	2	4	2007	14	3	20.6	38.44	39.30	R	5	R					2.8	R				
35	2	4	2007	14	54	18.1	37.94	30.98	R	5	R					2.6	R				
36	2	4	2007	15	13	1.2	36.09	26.91	R	10	R					3.3	R	3.1	R		
37	2	4	2007	15	37	20.4	40.64	36.79	R	5	R					3.2	R				
38	2	4	2007	19	56	13.1	36.12	40.96	R	7	R					4.0	R				
39	2	4	2007	22	26	6.7	39.27	33.50	R	8	R					3.5	R				
40	3	4	2007	5	43	19.1	40.10	27.70	R	5	R					2.8	R				

TÜRKİYE DEPREM ETKİNLİĞİ (2007 YILI NİSAN AYI)

No	Tarih - Date			Zaman - Time			Koordinat - Coordinate			Derinlik - Depth		Magnitüd - Magnitude									
	Gün	Ay	Yıl	Saat	Dak.	San.	Enlem-K	Boylam-D	Ref	Km.	Ref	Ms	Ref	Mb	Ref	Md	Ref	MI	Ref	Mw	Ref
41	3	4	2007	8	33	42.3	37.98	30.98	R	8	R					3.1	R				
42	3	4	2007	8	37	33.4	39.93	41.98	R	5	R					3.0	R				
43	3	4	2007	9	26	17.0	39.17	30.61	R	12	R					2.8	R				
44	3	4	2007	13	19	4.5	37.91	30.95	R	14	R					3.3	R				
45	3	4	2007	13	28	36.7	38.41	39.05	R	4	R					3.6	R				
46	3	4	2007	13	50	1.7	38.98	44.22	R	5	R					3.0	R	2.9	R		
47	3	4	2007	14	3	6.8	40.70	29.08	R	5	R					2.7	R				
48	3	4	2007	14	23	34.9	40.35	27.88	R	11	R					2.6	R				
49	3	4	2007	21	37	22.9	38.92	40.40	R	13	R					2.8	R				
50	3	4	2007	22	17	0.5	40.06	32.82	R	5	R					3.6	R				
51	3	4	2007	22	49	10.6	39.19	41.24	R	25	R					2.8	R				
52	4	4	2007	1	6	6.0	38.26	43.70	R	20	R					2.8	R				
53	4	4	2007	9	34	39.2	38.95	25.82	R	19	R					2.9	R				
54	4	4	2007	9	56	27.0	39.51	29.64	R	18	R					2.9	R				
55	4	4	2007	9	58	43.4	39.58	29.90	R	15	R					2.9	R				
56	4	4	2007	15	20	15.0	36.52	28.81	R	20	R					3.1	R	3.1	R		
57	4	4	2007	15	26	37.4	40.20	32.40	R	3	R					3.2	R				
58	4	4	2007	15	33	29.0	39.87	29.95	R	9	R					2.9	R				
59	4	4	2007	18	37	24.7	35.25	29.61	5	10	5					3.8	R	3.7	5		
60	4	4	2007	20	8	6.6	39.71	24.98	R	16	R					3.3	R				

TÜRKİYE DEPREM ETKİNLİĞİ (2007 YILI NİSAN AYI)

No	Tarih - Date			Zaman - Time			Koordinat - Coordinate			Derinlik - Depth		Magnitüd - Magnitude									
	Gün	Ay	Yıl	Saat	Dak.	San.	Enlem-K	Boylam-D	Ref	Km.	Ref	Ms	Ref	Mb	Ref	Md	Ref	MI	Ref	Mw	Ref
61	4	4	2007	20	24	47.9	39.97	32.78	R	5	R					3.2	R				
62	4	4	2007	20	36	22.8	38.37	39.21	R	5	R					3.2	R				
63	4	4	2007	22	18	53.1	38.60	43.81	R	8	R					2.8	R				
64	4	4	2007	23	27	56.4	38.55	39.25	R	4	R					2.7	R				
65	5	4	2007	1	28	32.2	40.83	30.03	R	6	R					2.7	R				
66	5	4	2007	1	52	38.3	38.42	39.24	R	4	R					3.0	R				
67	5	4	2007	11	49	38.6	38.87	35.77	R	4	R					3.0	R				
68	5	4	2007	14	18	57.7	39.52	27.97	R	6	R					3.1	R				
69	5	4	2007	16	26	21.9	37.18	38.70	R	5	R					2.8	R	2.5	R		
70	5	4	2007	17	34	53.7	40.26	27.21	R	7	R					3.2	R				
71	5	4	2007	23	6	41.9	39.87	40.31	R	3	R							2.5	R		
72	6	4	2007	1	20	2.6	38.80	40.06	R	6	R					3.1	R				
73	6	4	2007	2	36	13.4	40.02	39.72	R	21	R					2.8	R				
74	6	4	2007	5	36	34.3	38.53	39.15	R	4	R					2.9	R				
75	6	4	2007	14	49	23.3	40.24	27.79	R	4	R					2.5	R				
76	6	4	2007	15	9	33.4	37.24	28.16	R	5	R					2.7	R				
77	6	4	2007	15	10	43.5	39.96	33.08	R	10	R					2.5	R				
78	6	4	2007	15	26	24.4	40.56	29.26	R	8	R					2.7	R				
79	6	4	2007	16	15	38.6	40.62	35.39	R	15	R					2.8	R				
80	6	4	2007	17	38	47.8	36.56	29.56	R	5	R							2.5	R		

TÜRKİYE DEPREM ETKİNLİĞİ (2007 YILI NİSAN AYI)

No	Tarih - Date			Zaman - Time			Koordinat - Coordinate			Derinlik - Depth		Magnitüd - Magnitude									
	Gün	Ay	Yıl	Saat	Dak.	San.	Enlem-K	Boylam-D	Ref	Km.	Ref	Ms	Ref	Mb	Ref	Md	Ref	MI	Ref	Mw	Ref
81	6	4	2007	17	45	38.7	39.37	28.26	R	5	R					2.9	R				
82	6	4	2007	19	29	40.5	40.70	27.40	R	8	R					2.6	R				
83	6	4	2007	20	14	19.6	40.23	42.09	R	3	R					3.4	R				
84	6	4	2007	20	24	8.3	37.93	30.94	R	9	R					3.0	R				
85	6	4	2007	21	29	21.6	41.19	34.12	R	10	R					2.8	R				
86	6	4	2007	21	52	30.6	40.61	27.73	R	7	R					2.7	R				
87	6	4	2007	22	10	17.4	39.46	39.96	R	5	R					2.9	R				
88	7	4	2007	0	37	31.4	39.03	27.29	R	8	R					2.8	R				
89	7	4	2007	2	59	26.3	38.81	31.45	R	5	R					3.0	R				
90	7	4	2007	3	57	14.2	37.89	30.94	R	12	R					3.0	R				
91	7	4	2007	4	52	0.7	39.35	40.65	R	5	R					3.0	R				
92	7	4	2007	7	24	28.9	38.01	30.89	R	5	R							2.8	R		
93	7	4	2007	8	49	37.3	39.31	30.46	R	3	R					2.7	R				
94	7	4	2007	8	55	11.5	40.49	26.14	R	32	R					2.6	R				
95	7	4	2007	12	34	1.0	39.64	29.44	R	5	R					3.1	R				
96	7	4	2007	14	42	12.5	40.81	34.78	R	7	R					3.3	R				
97	7	4	2007	14	56	39.1	40.04	38.98	R	10	R					3.4	R				
98	7	4	2007	19	59	15.2	36.96	27.92	R	8	R					3.4	R	3.3	R		
99	7	4	2007	22	46	26.9	41.76	32.47	R	5	R					3.0	R				
100	8	4	2007	4	0	49.6	37.90	26.96	5	1	5							3.6	R		

TÜRKİYE DEPREM ETKİNLİĞİ (2007 YILI NİSAN AYI)

No	Tarih - Date			Zaman - Time			Koordinat - Coordinate			Derinlik - Depth		Magnitüd - Magnitude									
	Gün	Ay	Yıl	Saat	Dak.	San.	Enlem-K	Boylam-D	Ref	Km.	Ref	Ms	Ref	Mb	Ref	Md	Ref	MI	Ref	Mw	Ref
101	8	4	2007	4	6	6.7	40.13	40.65	R	4	R					3.4	R				
102	8	4	2007	4	10	26.0	41.67	32.47	R	4	R					2.8	R				
103	8	4	2007	4	37	58.1	39.60	42.83	R	10	R					2.9	R				
104	8	4	2007	6	59	14.6	36.94	27.93	R	6	R					2.5	R				
105	8	4	2007	8	58	25.4	39.53	27.03	R	5	R					2.9	R				
106	8	4	2007	9	22	22.3	40.27	41.72	R	5	R					3.0	R				
107	8	4	2007	9	24	18.5	40.26	41.74	R	9	R					3.0	R				
108	8	4	2007	11	5	1.4	40.63	26.94	R	5	R					2.7	R				
109	8	4	2007	13	32	14.8	37.14	37.17	R	7	R					3.1	R				
110	8	4	2007	13	49	27.2	39.45	35.07	R	5	R					2.8	R				
111	8	4	2007	14	36	44.7	38.71	35.82	R	4	R					2.8	R				
112	8	4	2007	17	6	18.0	39.72	39.75	R	9	R					3.0	R				
113	8	4	2007	19	46	25.2	38.73	33.20	R	6	R					2.7	R				
114	8	4	2007	22	54	53.5	40.76	27.47	R	15	R					2.6	R				
115	8	4	2007	23	39	4.1	37.04	27.99	R	10	R					3.1	R				
116	9	4	2007	0	20	26.1	38.86	27.92	R	8	R					2.8	R				
117	9	4	2007	3	39	50.8	38.41	39.29	R	17	R					2.9	R				
118	9	4	2007	5	34	7.9	38.07	35.75	R	4	R					3.5	R				
119	9	4	2007	6	49	15.7	37.27	34.44	R	6	R					2.7	R	2.5	R		
120	9	4	2007	7	22	17.8	39.67	29.52	R	9	R					2.8	R				

TÜRKİYE DEPREM ETKİNLİĞİ (2007 YILI NİSAN AYI)

No	Tarih - Date			Zaman - Time			Koordinat - Coordinate			Derinlik - Depth		Magnitüd - Magnitude									
	Gün	Ay	Yıl	Saat	Dak.	San.	Enlem-K	Boylam-D	Ref	Km.	Ref	Ms	Ref	Mb	Ref	Md	Ref	MI	Ref	Mw	Ref
121	9	4	2007	12	40	9.2	39.71	39.78	R	5	R					2.8	R				
122	9	4	2007	13	51	3.4	37.97	43.57	R	5	R					2.7	R				
123	9	4	2007	14	29	19.1	35.83	28.33	R	6	R							4.0	R		
124	9	4	2007	14	49	52.5	41.49	35.01	R	5	R					2.8	R				
125	9	4	2007	17	8	37.9	39.97	40.96	R	3	R					2.9	R				
126	9	4	2007	21	26	16.0	37.16	36.08	R	22	R					2.6	R				
127	9	4	2007	21	26	49.7	38.93	44.44	R	5	R			4.4	N			4.3	R		
128	9	4	2007	21	36	52.1	38.96	44.60	R	5	R					3.7	R	3.6	R		
129	9	4	2007	23	0	34.1	38.99	44.52	R	5	R					3.5	R				
130	10	4	2007	3	15	52.6	41.15	25.63	R	5	R							3.6	R		
131	10	4	2007	4	20	49.1	36.83	28.18	R	68	R					3.3	R				
132	10	4	2007	7	56	3.9	41.02	36.02	R	4	R					2.7	R				
133	10	4	2007	8	0	33.2	39.64	29.48	R	10	R					2.8	R				
134	10	4	2007	8	18	3.6	39.66	29.46	R	7	R					2.9	R				
135	10	4	2007	8	20	40.1	39.91	28.84	R	5	R					2.7	R				
136	10	4	2007	8	24	36.4	39.75	34.14	R	8	R					2.8	R				
137	10	4	2007	8	46	14.9	35.96	27.22	R	5	R					3.1	R				
138	10	4	2007	9	25	10.0	41.55	33.78	R	5	R					2.9	R				
139	10	4	2007	11	30	25.5	37.23	34.46	R	13	R					2.8	R				
140	10	4	2007	11	33	4.9	37.25	34.43	R	14	R					2.7	R				

TÜRKİYE DEPREM ETKİNLİĞİ (2007 YILI NİSAN AYI)

No	Tarih - Date			Zaman - Time			Koordinat - Coordinate			Derinlik - Depth		Magnitüd - Magnitude									
	Gün	Ay	Yıl	Saat	Dak.	San.	Enlem-K	Boylam-D	Ref	Km.	Ref	Ms	Ref	Mb	Ref	Md	Ref	MI	Ref	Mw	Ref
141	10	4	2007	11	36	22.9	41.19	40.68	R	25	R					2.8	R				
142	10	4	2007	11	57	44.0	36.83	34.43	R	5	R					2.6	R				
143	10	4	2007	12	38	54.4	36.93	27.95	R	13	R					2.6	R				
144	10	4	2007	14	18	16.0	38.89	30.29	R	10	R					2.7	R				
145	10	4	2007	15	17	14.3	37.26	28.20	R	9	R					2.7	R				
146	10	4	2007	15	29	1.9	39.39	27.14	R	9	R					3.1	R				
147	10	4	2007	16	18	45.3	40.15	34.11	R	7	R					2.8	R				
148	10	4	2007	16	47	44.0	38.26	28.68	R	5	R					3.1	R				
149	10	4	2007	21	34	56.7	38.03	30.98	R	9	R							3.6	R		
150	10	4	2007	21	39	18.4	38.01	30.95	R	7	R							4.7	R		
151	10	4	2007	21	44	43.7	37.97	30.98	R	8	R					3.0	R				
152	10	4	2007	21	49	20.2	37.97	30.93	R	2	R					3.3	R				
153	10	4	2007	21	51	18.0	38.03	30.93	R	10	R							3.7	R		
154	10	4	2007	22	0	34.0	38.00	30.94	R	5	R							4.9	R		
155	10	4	2007	22	23	58.8	37.96	30.96	R	20	R					3.4	R				
156	10	4	2007	23	15	5.8	37.97	30.94	R	7	R					3.3	R				
157	10	4	2007	23	17	53.9	37.99	30.94	R	10	R					3.4	R				
158	10	4	2007	23	19	56.0	38.02	30.94	R	2	R					3.5	R	3.4	R		
159	11	4	2007	0	23	22.6	37.99	30.91	R	7	R							3.6	R		
160	11	4	2007	0	35	8.6	38.01	30.94	R	7	R							3.6	R		

TÜRKİYE DEPREM ETKİNLİĞİ (2007 YILI NİSAN AYI)

No	Tarih - Date			Zaman - Time			Koordinat - Coordinate			Derinlik - Depth		Magnitüd - Magnitude									
	Gün	Ay	Yıl	Saat	Dak.	San.	Enlem-K	Boylam-D	Ref	Km.	Ref	Ms	Ref	Mb	Ref	Md	Ref	MI	Ref	Mw	Ref
161	11	4	2007	1	6	30.8	37.96	30.91	R	9	R							3.7	R		
162	11	4	2007	2	8	12.6	37.11	28.40	R	17	R					2.6	R				
163	11	4	2007	2	50	9.4	38.82	24.25	R	8	R							3.6	R		
164	11	4	2007	4	2	41.3	38.02	30.93	R	8	R							3.3	R		
165	11	4	2007	4	15	14.7	38.01	30.97	R	6	R							3.4	R		
166	11	4	2007	4	25	34.1	38.00	30.96	R	2	R					3.4	R				
167	11	4	2007	4	29	57.9	37.99	30.97	R	5	R							3.4	R		
168	11	4	2007	5	46	23.0	37.99	30.97	R	14	R					3.3	R	3.3	R		
169	11	4	2007	6	1	3.5	37.99	30.89	R	22	R					3.0	R				
170	11	4	2007	6	7	41.7	37.92	30.93	R	21	R							3.1	R		
171	11	4	2007	6	8	45.7	37.93	30.90	R	21	R					3.3	R	3.4	R		
172	11	4	2007	8	36	50.0	37.89	30.99	R	12	R					3.2	R				
173	11	4	2007	8	58	12.0	37.99	30.98	R	8	R					3.1	R				
174	11	4	2007	8	59	14.2	38.04	30.96	R	19	R					3.9	R				
175	11	4	2007	9	57	59.2	38.05	30.92	R	6	R							4.2	R		
176	11	4	2007	10	6	38.6	38.04	30.93	R	5	R							4.3	R		
177	11	4	2007	11	0	24.1	37.96	30.97	R	15	R					3.0	R				
178	11	4	2007	11	49	28.1	37.96	30.98	R	12	R					2.9	R				
179	11	4	2007	12	32	11.4	37.99	30.96	R	9	R					3.1	R				
180	11	4	2007	13	5	3.8	37.93	31.01	R	15	R					2.9	R				

TÜRKİYE DEPREM ETKİNLİĞİ (2007 YILI NİSAN AYI)

No	Tarih - Date			Zaman - Time			Koordinat - Coordinate			Derinlik - Depth		Magnitüd - Magnitude									
	Gün	Ay	Yıl	Saat	Dak.	San.	Enlem-K	Boylam-D	Ref	Km.	Ref	Ms	Ref	Mb	Ref	Md	Ref	MI	Ref	Mw	Ref
181	11	4	2007	14	32	4.7	38.07	30.92	R	10	R					3.1	R				
182	11	4	2007	16	28	19.8	40.65	33.00	R	19	R					2.5	R				
183	11	4	2007	18	52	10.2	39.46	39.15	R	8	R					3.0	R				
184	11	4	2007	19	17	46.2	37.97	30.93	R	10	R							3.6	R		
185	11	4	2007	19	43	18.0	40.16	44.17	R	5	R					3.6	R				
186	11	4	2007	20	4	48.7	37.95	30.96	R	8	R					3.0	R				
187	11	4	2007	22	52	50.8	38.74	44.74	R	5	R					3.3	R				
188	12	4	2007	0	40	7.1	37.68	31.49	R	7	R					3.1	R				
189	12	4	2007	2	26	45.5	39.78	33.33	R	5	R					3.2	R				
190	12	4	2007	6	53	23.8	37.59	36.28	R	8	R					3.1	R				
191	12	4	2007	8	19	37.1	38.49	26.77	R	5	R					3.3	R				
192	12	4	2007	12	11	17.5	37.95	28.64	R	6	R					3.0	R				
193	12	4	2007	16	22	15.8	37.28	34.43	R	5	R					3.2	R				
194	12	4	2007	18	6	28.5	37.98	30.96	R	5	R					3.0	R				
195	13	4	2007	0	0	25.6	39.02	41.45	R	5	R					2.9	R				
196	13	4	2007	1	1	9.2	38.30	38.74	R	5	R					2.7	R				
197	13	4	2007	4	50	30.2	37.93	31.01	R	14	R					3.2	R				
198	13	4	2007	8	34	7.5	39.54	29.90	R	17	R					2.7	R				
199	13	4	2007	11	54	18.8	37.98	30.97	R	8	R					3.4	R				
200	13	4	2007	13	5	41.1	40.11	39.39	R	8	R					2.9	R				

TÜRKİYE DEPREM ETKİNLİĞİ (2007 YILI NİSAN AYI)

No	Tarih - Date			Zaman - Time			Koordinat - Coordinate			Derinlik - Depth		Magnitüd - Magnitude									
	Gün	Ay	Yıl	Saat	Dak.	San.	Enlem-K	Boylam-D	Ref	Km.	Ref	Ms	Ref	Mb	Ref	Md	Ref	MI	Ref	Mw	Ref
201	13	4	2007	17	20	50.1	40.56	27.30	R	7	R					3.0	R				
202	14	4	2007	0	39	7.4	38.42	39.08	R	6	R					2.8	R				
203	14	4	2007	0	50	45.6	40.03	39.01	R	5	R					2.8	R				
204	14	4	2007	1	15	47.1	36.95	27.76	R	11	R					3.2	R				
205	14	4	2007	4	30	36.9	38.32	39.28	R	5	R			4.3	N	4.3	R	4.2	R		
206	14	4	2007	6	45	14.9	40.63	36.80	R	6	R					3.0	R				
207	14	4	2007	12	15	32.5	39.51	30.66	R	6	R					2.6	R				
208	14	4	2007	13	47	34.6	38.71	35.72	R	2	R					3.1	R				
209	14	4	2007	13	48	12.9	41.59	34.88	R	6	R					3.0	R				
210	14	4	2007	13	58	41.6	40.53	33.02	R	5	R					3.3	R				
211	14	4	2007	20	52	27.8	37.26	34.43	R	9	R					3.0	R				
212	14	4	2007	21	27	27.0	37.33	30.60	R	12	R					2.9	R				
213	14	4	2007	23	8	46.8	40.97	38.77	R	18	R					3.0	R				
214	15	4	2007	0	6	37.1	37.57	29.57	R	9	R					2.8	R				
215	15	4	2007	0	52	10.4	40.57	28.38	R	8	R					3.0	R				
216	15	4	2007	2	56	4.9	38.99	44.49	R	12	R					3.5	R				
217	15	4	2007	3	0	41.0	38.87	44.75	R	5	R					3.5	R				
218	15	4	2007	6	37	57.7	38.01	38.24	R	8	R					2.9	R				
219	15	4	2007	7	34	47.4	37.92	31.00	R	22	R					2.8	R				
220	15	4	2007	8	3	25.9	36.92	27.92	R	21	R					2.5	R				

TÜRKİYE DEPREM ETKİNLİĞİ (2007 YILI NİSAN AYI)

No	Tarih - Date			Zaman - Time			Koordinat - Coordinate			Derinlik - Depth		Magnitüd - Magnitude									
	Gün	Ay	Yıl	Saat	Dak.	San.	Enlem-K	Boylam-D	Ref	Km.	Ref	Ms	Ref	Mb	Ref	Md	Ref	MI	Ref	Mw	Ref
221	15	4	2007	10	27	3.5	37.64	26.79	R	5	R							2.6	R		
222	15	4	2007	10	59	11.8	38.85	27.76	R	6	R					2.8	R				
223	15	4	2007	11	18	13.0	40.55	32.97	R	24	R					2.6	R				
224	15	4	2007	11	27	35.4	37.24	34.45	R	18	R					3.0	R				
225	15	4	2007	11	58	42.2	39.19	24.27	R	5	R					3.6	R				
226	15	4	2007	19	49	0.2	40.40	42.18	R	6	R					2.9	R				
227	15	4	2007	20	10	46.7	38.75	40.11	R	5	R					3.1	R				
228	15	4	2007	22	44	13.6	36.56	28.65	R	28	R					3.1	R				
229	16	4	2007	0	5	46.8	38.37	39.31	R	20	R					2.8	R				
230	16	4	2007	1	49	39.9	37.40	30.50	R	16	R					2.8	R				
231	16	4	2007	5	37	27.7	37.99	30.95	R	3	R					3.2	R				
232	16	4	2007	5	44	44.1	37.96	30.96	R	8	R					3.2	R				
233	16	4	2007	6	25	53.1	39.18	39.77	R	10	R					3.4	R				
234	16	4	2007	6	45	12.7	37.95	30.99	R	12	R					2.9	R				
235	16	4	2007	7	19	41.6	38.01	31.00	R	5	R					3.1	R				
236	16	4	2007	8	15	35.9	41.28	40.72	R	26	R					3.3	R				
237	16	4	2007	9	11	59.0	39.71	38.80	R	5	R					3.5	R	3.4	R		
238	16	4	2007	10	17	50.0	41.00	35.03	R	6	R					2.7	R				
239	16	4	2007	11	41	27.1	37.37	27.82	R	6	R					2.8	R				
240	16	4	2007	12	28	49.3	41.14	40.83	R	14	R					2.9	R				

TÜRKİYE DEPREM ETKİNLİĞİ (2007 YILI NİSAN AYI)

No	Tarih - Date			Zaman - Time			Koordinat - Coordinate			Derinlik - Depth		Magnitüd - Magnitude									
	Gün	Ay	Yıl	Saat	Dak.	San.	Enlem-K	Boylam-D	Ref	Km.	Ref	Ms	Ref	Mb	Ref	Md	Ref	MI	Ref	Mw	Ref
241	16	4	2007	12	52	54.8	39.87	29.98	R	7	R					2.8	R				
242	16	4	2007	12	53	8.7	37.36	30.61	R	5	R					3.2	R				
243	16	4	2007	14	4	44.0	38.74	35.20	R	5	R					3.4	R				
244	16	4	2007	15	10	31.2	40.05	35.61	R	8	R					2.9	R				
245	16	4	2007	18	43	57.5	37.91	30.95	R	10	R					2.9	R				
246	16	4	2007	20	17	15.5	40.39	27.91	R	6	R					2.6	R				
247	16	4	2007	22	3	42.6	38.12	42.82	R	28	R					2.7	R				
248	16	4	2007	23	43	4.7	40.38	28.25	R	5	R					2.6	R				
249	16	4	2007	23	45	22.0	40.01	27.86	R	22	R					2.6	R				
250	17	4	2007	0	2	29.8	41.05	33.50	R	3	R					2.8	R				
251	17	4	2007	0	12	17.0	38.78	33.15	R	6	R					3.0	R				
252	17	4	2007	0	30	59.8	37.96	30.98	R	10	R					3.1	R				
253	17	4	2007	0	49	41.1	40.25	29.00	R	6	R					2.6	R				
254	17	4	2007	0	50	33.4	38.00	30.96	R	11	R					2.9	R				
255	17	4	2007	2	24	47.1	37.94	31.00	R	8	R					2.9	R				
256	17	4	2007	3	43	24.4	38.92	28.01	R	8	R					2.7	R				
257	17	4	2007	11	33	33.7	40.70	32.29	R	8	R					2.9	R				
258	17	4	2007	15	8	16.1	39.61	29.35	R	15	R					2.8	R				
259	17	4	2007	17	51	35.9	36.80	35.47	R	9	R					2.9	R				
260	18	4	2007	0	19	11.6	40.71	28.95	R	14	R					2.7	R				

TÜRKİYE DEPREM ETKİNLİĞİ (2007 YILI NİSAN AYI)

No	Tarih - Date			Zaman - Time			Koordinat - Coordinate			Derinlik - Depth		Magnitüd - Magnitude									
	Gün	Ay	Yıl	Saat	Dak.	San.	Enlem-K	Boylam-D	Ref	Km.	Ref	Ms	Ref	Mb	Ref	Md	Ref	MI	Ref	Mw	Ref
261	18	4	2007	1	54	43.6	40.00	39.63	R	20	R					2.5	R				
262	18	4	2007	4	23	27.2	37.98	30.98	R	8	R					3.2	R				
263	18	4	2007	8	56	11.7	39.89	35.29	R	10	R					2.8	R				
264	18	4	2007	9	16	37.8	39.55	33.16	R	7	R					2.8	R				
265	18	4	2007	10	3	15.8	35.28	33.43	R	5	R					2.8	R				
266	18	4	2007	10	5	20.2	40.29	25.91	R	13	R					2.8	R				
267	18	4	2007	12	20	55.0	40.44	27.87	R	4	R					2.7	R				
268	18	4	2007	22	46	49.5	39.02	26.71	R	5	R					3.1	R				
269	19	4	2007	1	26	20.8	37.94	37.93	R	23	R					2.8	R				
270	19	4	2007	2	52	18.4	40.84	27.78	R	17	R					2.6	R				
271	19	4	2007	6	16	56.0	35.87	29.64	R	18	R					3.3	R	3.2	R		
272	19	4	2007	7	16	26.0	38.32	39.15	R	5	R					4.1	R	3.9	R		
273	19	4	2007	10	15	44.7	39.60	24.17	R	13	R							5.0	R		
274	19	4	2007	13	21	59.3	38.55	31.23	R	5	R							4.0	R		
275	19	4	2007	13	32	3.0	38.54	31.27	R	5	R					3.2	R				
276	19	4	2007	13	34	3.7	35.36	26.55	5	1	5					4.0	R	4.2	5		
277	19	4	2007	20	45	15.8	38.40	39.21	R	5	R					3.1	R				
278	19	4	2007	23	31	11.6	40.33	26.07	R	10	R					2.8	R				
279	19	4	2007	23	31	35.8	37.86	36.48	R	5	R					3.5	R				
280	20	4	2007	0	16	27.7	38.80	27.73	R	15	R					3.4	R				

TÜRKİYE DEPREM ETKİNLİĞİ (2007 YILI NİSAN AYI)

No	Tarih - Date			Zaman - Time			Koordinat - Coordinate			Derinlik - Depth		Magnitüd - Magnitude									
	Gün	Ay	Yıl	Saat	Dak.	San.	Enlem-K	Boylam-D	Ref	Km.	Ref	Ms	Ref	Mb	Ref	Md	Ref	MI	Ref	Mw	Ref
281	20	4	2007	5	17	49.7	38.32	28.21	R	5	R					3.0	R				
282	20	4	2007	6	33	54.3	37.25	28.15	R	3	R					2.7	R				
283	20	4	2007	7	41	48.5	35.66	31.80	R	4	R					3.6	R				
284	20	4	2007	8	54	13.2	39.41	30.15	R	9	R					2.8	R				
285	20	4	2007	8	58	57.9	38.99	35.69	R	9	R					2.9	R				
286	20	4	2007	9	32	30.4	35.87	27.34	R	16	R					3.2	R				
287	20	4	2007	10	31	8.5	38.89	27.74	R	8	R					2.8	R				
288	20	4	2007	12	19	45.0	39.58	29.46	R	5	R					3.0	R				
289	20	4	2007	12	41	26.6	38.36	39.19	R	5	R					3.1	R				
290	20	4	2007	14	38	2.9	37.20	28.21	R	14	R					3.1	R				
291	20	4	2007	15	1	38.8	38.33	39.17	R	5	R					2.9	R				
292	20	4	2007	16	2	46.5	35.86	32.12	R	28	R					3.3	R				
293	20	4	2007	17	22	17.1	38.28	39.14	R	5	R					3.4	R				
294	20	4	2007	19	44	27.2	36.71	27.52	R	12	R					2.7	R				
295	20	4	2007	22	25	51.1	37.80	28.90	R	3	R					2.8	R				
296	21	4	2007	7	6	53.7	39.18	36.08	R	2	R					3.3	R				
297	21	4	2007	7	20	36.5	39.19	36.09	R	5	R					3.2	R				
298	21	4	2007	9	2	32.1	39.08	40.42	R	11	R					3.1	R				
299	21	4	2007	9	12	53.7	40.81	40.36	R	18	R					2.8	R				
300	21	4	2007	10	45	22.3	38.98	40.14	R	10	R					2.8	R				

TÜRKİYE DEPREM ETKİNLİĞİ (2007 YILI NİSAN AYI)

No	Tarih - Date			Zaman - Time			Koordinat - Coordinate			Derinlik - Depth		Magnitüd - Magnitude									
	Gün	Ay	Yıl	Saat	Dak.	San.	Enlem-K	Boylam-D	Ref	Km.	Ref	Ms	Ref	Mb	Ref	Md	Ref	MI	Ref	Mw	Ref
301	21	4	2007	16	16	54.8	38.00	29.18	R	5	R					2.8	R				
302	21	4	2007	16	38	7.6	39.97	25.70	R	5	R					3.1	R				
303	22	4	2007	1	27	6.7	40.46	28.60	R	7	R					2.7	R				
304	22	4	2007	1	51	57.5	35.94	27.58	R	30	R					3.4	R				
305	22	4	2007	1	59	4.7	40.58	34.10	R	16	R					3.4	R				
306	22	4	2007	3	0	16.8	37.93	31.00	R	9	R					3.3	R				
307	22	4	2007	3	32	4.0	37.94	30.99	R	13	R					3.1	R				
308	22	4	2007	3	37	38.9	38.03	35.11	R	5	R					3.1	R				
309	22	4	2007	3	55	44.7	40.58	34.12	R	9	R					3.0	R				
310	22	4	2007	4	39	1.1	40.55	34.13	R	13	R					3.1	R				
311	22	4	2007	6	42	24.4	37.90	31.01	R	5	R					2.8	R				
312	22	4	2007	6	50	25.9	37.25	28.15	R	5	R					2.7	R				
313	22	4	2007	6	58	44.1	37.11	27.88	R	5	R					2.6	R				
314	22	4	2007	7	14	18.2	38.56	31.07	R	9	R					2.6	R				
315	22	4	2007	8	9	0.9	35.08	27.34	R	22	R					3.6	R				
316	22	4	2007	8	44	34.5	40.38	26.12	R	5	R					2.7	R				
317	22	4	2007	8	57	30.4	38.74	35.74	R	12	R					3.2	R				
318	22	4	2007	9	1	55.5	39.15	27.48	R	8	R					3.0	R				
319	22	4	2007	9	18	23.1	37.25	28.26	R	21	R					2.8	R				
320	22	4	2007	9	42	31.6	37.10	27.90	R	5	R					2.6	R				

TÜRKİYE DEPREM ETKİNLİĞİ (2007 YILI NİSAN AYI)

No	Tarih - Date			Zaman - Time			Koordinat - Coordinate			Derinlik - Depth		Magnitüd - Magnitude									
	Gün	Ay	Yıl	Saat	Dak.	San.	Enlem-K	Boylam-D	Ref	Km.	Ref	Ms	Ref	Mb	Ref	Md	Ref	MI	Ref	Mw	Ref
321	22	4	2007	10	46	8.7	39.41	40.76	R	5	R					3.3	R	3.4	R		
322	22	4	2007	12	45	16.4	38.79	32.34	R	5	R					3.0	R				
323	22	4	2007	12	52	2.9	35.59	29.93	R	40	R					4.0	R				
324	22	4	2007	12	55	59.6	39.75	34.15	R	6	R					2.5	R				
325	22	4	2007	13	54	40.6	40.87	35.94	R	9	R					3.0	R				
326	22	4	2007	15	37	35.7	34.49	33.06	R	24	R			3.9	N	3.8	R	3.8	R		
327	22	4	2007	18	11	29.4	39.67	40.62	R	5	R					3.0	R				
328	22	4	2007	18	53	32.2	37.57	44.18	R	5	R					3.1	R				
329	22	4	2007	19	11	48.7	39.83	40.57	R	6	R					2.9	R				
330	22	4	2007	20	8	34.6	38.38	39.18	R	5	R					3.1	R				
331	22	4	2007	21	13	33.3	36.53	28.83	R	17	R					2.9	R				
332	22	4	2007	21	59	33.7	39.32	43.11	R	13	R					3.0	R				
333	22	4	2007	23	21	56.2	38.42	30.31	R	6	R					2.8	R				
334	22	4	2007	23	50	22.7	39.05	29.77	R	4	R					3.2	R				
335	23	4	2007	0	2	44.6	39.04	29.71	R	10	R					2.6	R				
336	23	4	2007	0	10	10.6	36.68	30.41	R	11	R					3.2	R				
337	23	4	2007	0	32	26.4	35.46	28.26	R	31	R					3.6	R				
338	23	4	2007	0	45	36.4	39.04	29.73	R	5	R					3.0	R				
339	23	4	2007	0	50	44.6	39.25	44.27	R	8	R					3.2	R				
340	23	4	2007	1	46	14.0	35.66	28.30	R	39	R					3.4	R				

TÜRKİYE DEPREM ETKİNLİĞİ (2007 YILI NİSAN AYI)

No	Tarih - Date			Zaman - Time			Koordinat - Coordinate			Derinlik - Depth		Magnitüd - Magnitude									
	Gün	Ay	Yıl	Saat	Dak.	San.	Enlem-K	Boylam-D	Ref	Km.	Ref	Ms	Ref	Mb	Ref	Md	Ref	MI	Ref	Mw	Ref
341	23	4	2007	4	45	28.4	39.80	28.72	R	8	R					2.8	R				
342	23	4	2007	5	20	0.4	38.27	26.61	R	5	R					3.5	R	3.7	R		
343	23	4	2007	5	30	25.9	36.51	28.80	R	12	R					3.2	R				
344	23	4	2007	5	54	17.4	38.36	26.53	R	5	R					3.3	R				
345	23	4	2007	8	19	32.5	36.74	28.83	R	17	R					2.9	R				
346	23	4	2007	10	46	3.9	35.18	27.78	N	16	N			4.0	N						
347	23	4	2007	16	44	4.8	38.20	32.54	R	5	R					2.8	R				
348	23	4	2007	17	1	48.6	40.87	36.00	R	8	R					3.1	R				
349	23	4	2007	23	20	47.4	40.66	29.04	R	12	R					2.8	R				
350	23	4	2007	23	56	7.4	40.02	39.77	R	5	R			3.9	N	3.5	R	3.7	R		
351	24	4	2007	0	4	36.4	40.03	39.73	R	16	R					2.7	R				
352	24	4	2007	0	13	0.8	40.02	39.76	R	3	R					3.4	R				
353	24	4	2007	0	16	29.9	39.70	34.20	R	4	R					2.7	R				
354	24	4	2007	0	35	17.9	40.59	34.10	R	14	R					3.1	R				
355	24	4	2007	1	54	1.7	38.82	44.69	R	5	R					3.2	R				
356	24	4	2007	2	37	52.6	40.03	39.76	R	5	R					3.5	R	3.5	R		
357	24	4	2007	2	59	44.2	40.02	39.75	R	7	R					3.5	R	3.6	R		
358	24	4	2007	6	24	21.1	38.87	31.46	R	9	R					2.9	R				
359	24	4	2007	8	33	30.1	37.80	29.62	R	6	R					2.8	R				
360	24	4	2007	9	12	18.5	39.51	27.87	R	6	R					3.1	R				

TÜRKİYE DEPREM ETKİNLİĞİ (2007 YILI NİSAN AYI)

No	Tarih - Date			Zaman - Time			Koordinat - Coordinate			Derinlik - Depth		Magnitüd - Magnitude									
	Gün	Ay	Yıl	Saat	Dak.	San.	Enlem-K	Boylam-D	Ref	Km.	Ref	Ms	Ref	Mb	Ref	Md	Ref	MI	Ref	Mw	Ref
361	24	4	2007	11	30	47.6	39.46	40.34	R	10	R					2.8	R				
362	24	4	2007	12	48	46.5	39.36	30.87	R	5	R					2.9	R				
363	24	4	2007	13	28	38.4	41.00	36.08	R	7	R					2.6	R				
364	24	4	2007	16	45	2.6	39.43	30.66	R	5	R					2.6	R				
365	24	4	2007	17	53	54.8	36.57	34.52	R	24	R					2.5	R				
366	24	4	2007	18	14	53.7	38.48	30.51	R	12	R					2.8	R				
367	24	4	2007	22	39	11.2	40.00	40.01	R	11	R					2.9	R				
368	25	4	2007	1	4	56.4	39.39	27.87	R	10	R					3.1	R				
369	25	4	2007	4	8	50.4	39.51	44.23	R	5	R					3.2	R				
370	25	4	2007	4	14	28.0	40.11	27.82	R	13	R					2.8	R				
371	25	4	2007	7	1	15.7	41.08	35.43	R	5	R					3.0	R				
372	25	4	2007	7	59	50.8	37.15	28.24	R	14	R					2.6	R				
373	25	4	2007	8	12	13.1	39.87	39.05	R	9	R					2.8	R				
374	25	4	2007	12	3	47.1	39.64	29.49	R	7	R					2.7	R				
375	25	4	2007	14	20	26.8	38.11	32.67	R	5	R					2.8	R				
376	25	4	2007	15	45	5.5	37.14	35.78	R	33	R					2.8	R				
377	25	4	2007	17	38	52.4	37.03	27.48	R	6	R					2.7	R				
378	25	4	2007	19	47	43.7	39.96	39.22	R	20	R					2.9	R				
379	25	4	2007	20	3	58.2	39.97	42.52	R	5	R					2.7	R				
380	25	4	2007	20	10	50.8	36.48	28.82	R	10	R					3.0	R				

TÜRKİYE DEPREM ETKİNLİĞİ (2007 YILI NİSAN AYI)

No	Tarih - Date			Zaman - Time			Koordinat - Coordinate			Derinlik - Depth		Magnitüd - Magnitude									
	Gün	Ay	Yıl	Saat	Dak.	San.	Enlem-K	Boylam-D	Ref	Km.	Ref	Ms	Ref	Mb	Ref	Md	Ref	MI	Ref	Mw	Ref
381	25	4	2007	20	38	40.5	38.27	31.60	R	4	R					2.9	R				
382	25	4	2007	21	37	13.0	34.12	32.07	R	5	R					3.6	R				
383	26	4	2007	0	39	41.1	40.86	28.15	R	9	R					2.7	R				
384	26	4	2007	1	56	57.7	37.80	28.14	R	2	R					3.5	R	3.6	R		
385	26	4	2007	2	20	24.5	39.50	40.74	R	25	R					2.8	R				
386	26	4	2007	2	31	4.0	36.51	28.85	R	5	R					2.9	R				
387	26	4	2007	2	58	1.3	37.81	28.16	R	10	R					3.0	R				
388	26	4	2007	3	19	46.2	40.03	39.65	R	14	R					2.6	R				
389	26	4	2007	3	48	53.5	39.72	32.95	R	12	R					2.8	R				
390	26	4	2007	4	2	41.0	37.02	27.95	R	12	R					2.9	R				
391	26	4	2007	5	21	22.5	36.58	28.81	R	6	R					2.9	R				
392	26	4	2007	9	38	57.0	36.57	28.86	R	23	R					2.9	R				
393	26	4	2007	10	54	12.1	36.53	28.79	R	17	R					2.8	R				
394	26	4	2007	13	52	1.1	39.99	35.31	R	28	R					2.8	R				
395	26	4	2007	15	22	5.5	39.06	40.40	R	5	R					2.9	R				
396	26	4	2007	16	29	26.6	38.64	29.14	R	8	R					3.0	R				
397	26	4	2007	17	37	37.0	36.86	28.96	R	5	R					2.8	R				
398	26	4	2007	19	26	28.5	35.41	27.25	R	28	R					3.7	R				
399	27	4	2007	6	26	2.8	37.29	28.19	R	5	R					2.7	R				
400	27	4	2007	7	33	47.0	39.98	42.35	R	5	R					3.1	R				

TÜRKİYE DEPREM ETKİNLİĞİ (2007 YILI NİSAN AYI)

No	Tarih - Date			Zaman - Time			Koordinat - Coordinate			Derinlik - Depth		Magnitüd - Magnitude									
	Gün	Ay	Yıl	Saat	Dak.	San.	Enlem-K	Boylam-D	Ref	Km.	Ref	Ms	Ref	Mb	Ref	Md	Ref	MI	Ref	Mw	Ref
401	27	4	2007	8	19	41.1	38.79	40.08	R	6	R					3.3	R				
402	27	4	2007	9	22	5.4	39.86	33.07	R	2	R					2.8	R				
403	27	4	2007	15	20	37.6	37.31	28.30	R	22	R					2.8	R				
404	27	4	2007	15	22	14.6	40.30	40.17	R	11	R					2.8	R				
405	27	4	2007	18	26	43.6	38.67	39.74	R	14	R					3.0	R				
406	27	4	2007	22	27	50.6	36.42	28.84	R	13	R					2.7	R				
407	27	4	2007	22	38	28.5	34.41	33.05	R	31	R					3.2	R				
408	27	4	2007	23	16	39.0	36.23	29.31	R	18	R					2.8	R				
409	27	4	2007	23	52	24.6	35.13	31.77	R	5	R					3.0	R				
410	28	4	2007	1	3	56.1	34.26	32.78	R	28	R					3.2	R				
411	28	4	2007	2	12	57.6	36.49	28.80	R	16	R					2.9	R				
412	28	4	2007	2	19	6.6	36.51	28.81	R	20	R					2.8	R				
413	28	4	2007	5	46	13.8	39.46	40.51	R	8	R					3.0	R				
414	28	4	2007	6	15	38.2	40.48	29.22	R	6	R					2.4	R				
415	28	4	2007	9	24	25.2	38.36	39.27	R	5	R					2.6	R				
416	28	4	2007	10	25	5.9	39.46	40.46	R	5	R					2.9	R				
417	28	4	2007	15	24	17.4	39.19	28.17	R	5	R					2.8	R				
418	28	4	2007	18	24	58.6	38.27	29.71	R	13	R					2.5	R				
419	28	4	2007	18	52	59.7	37.27	39.21	R	10	R					3.1	R				
420	28	4	2007	19	39	25.1	38.45	39.26	R	5	R					3.0	R				

TÜRKİYE DEPREM ETKİNLİĞİ (2007 YILI NİSAN AYI)

No	Tarih - Date			Zaman - Time			Koordinat - Coordinate			Derinlik - Depth		Magnitüd - Magnitude									
	Gün	Ay	Yıl	Saat	Dak.	San.	Enlem-K	Boylam-D	Ref	Km.	Ref	Ms	Ref	Mb	Ref	Md	Ref	MI	Ref	Mw	Ref
421	28	4	2007	23	5	48.5	40.45	26.39	R	9	R					3.1	R				
422	28	4	2007	23	15	53.5	40.45	26.39	R	22	R					2.8	R				
423	28	4	2007	23	24	25.8	37.32	35.91	R	11	R					2.4	R				
424	29	4	2007	1	8	2.8	39.07	26.10	R	2	R					3.3	R	3.2	R		
425	29	4	2007	4	18	20.1	36.25	29.15	R	29	R					3.2	R				
426	29	4	2007	6	39	38.4	39.07	27.71	R	5	R					3.2	R				
427	29	4	2007	9	1	26.2	37.89	30.96	R	13	R					2.8	R				
428	29	4	2007	9	37	38.6	39.22	27.66	R	22	R					3.0	R				
429	29	4	2007	10	51	41.8	38.88	40.34	R	6	R					2.9	R				
430	29	4	2007	12	52	44.9	39.77	39.24	R	12	R					2.3	R				
431	29	4	2007	13	7	36.9	37.91	30.93	R	19	R					3.1	R				
432	29	4	2007	13	28	50.0	36.83	35.06	R	21	R					2.9	R				
433	29	4	2007	16	23	39.4	37.44	38.70	R	7	R					2.5	R				
434	29	4	2007	16	28	46.3	39.12	41.08	R	9	R					3.2	R				
435	29	4	2007	17	53	33.8	37.94	30.94	R	10	R					3.2	R				
436	29	4	2007	18	52	17.4	40.33	30.42	R	10	R					2.8	R				
437	29	4	2007	19	2	49.2	38.24	27.33	R	7	R					3.1	R				
438	29	4	2007	22	11	12.8	38.34	39.33	R	7	R					2.6	R				
439	30	4	2007	2	45	27.6	38.72	33.19	R	10	R					2.7	R				
440	30	4	2007	3	9	20.1	38.61	43.72	R	8	R					3.0	R				

TÜRKİYE DEPREM ETKİNLİĞİ (2007 YILI NİSAN AYI)

No	Tarih - Date			Zaman - Time			Koordinat - Coordinate			Derinlik - Depth		Magnitüd - Magnitude									
	Gün	Ay	Yıl	Saat	Dak.	San.	Enlem-K	Boylam-D	Ref	Km.	Ref	Ms	Ref	Mb	Ref	Md	Ref	MI	Ref	Mw	Ref
441	30	4	2007	5	17	18.2	38.69	43.82	R	3	R					2.9	R				
442	30	4	2007	5	25	50.7	38.64	43.71	R	5	R					2.9	R				
443	30	4	2007	6	25	11.3	36.88	29.79	R	28	R					2.7	R				
444	30	4	2007	9	56	27.6	38.87	26.85	R	10	R					3.3	R	3.3	R		
445	30	4	2007	14	58	41.7	40.55	29.23	R	5	R					2.8	R				
446	30	4	2007	15	34	58.9	37.05	27.25	R	12	R					2.6	R				
447	30	4	2007	15	39	30.4	35.71	31.42	R	24	R					3.4	R				
448	30	4	2007	16	10	41.6	37.92	29.09	R	3	R					3.0	R				
449	30	4	2007	18	17	21.3	38.33	38.83	R	11	R					2.4	R				
450	30	4	2007	18	48	55.4	40.36	30.53	R	5	R					3.1	R				
451	30	4	2007	21	14	2.8	34.90	31.77	R	5	R					3.1	R				
452	30	4	2007	22	42	36.3	38.88	35.56	R	5	R					3.4	R				